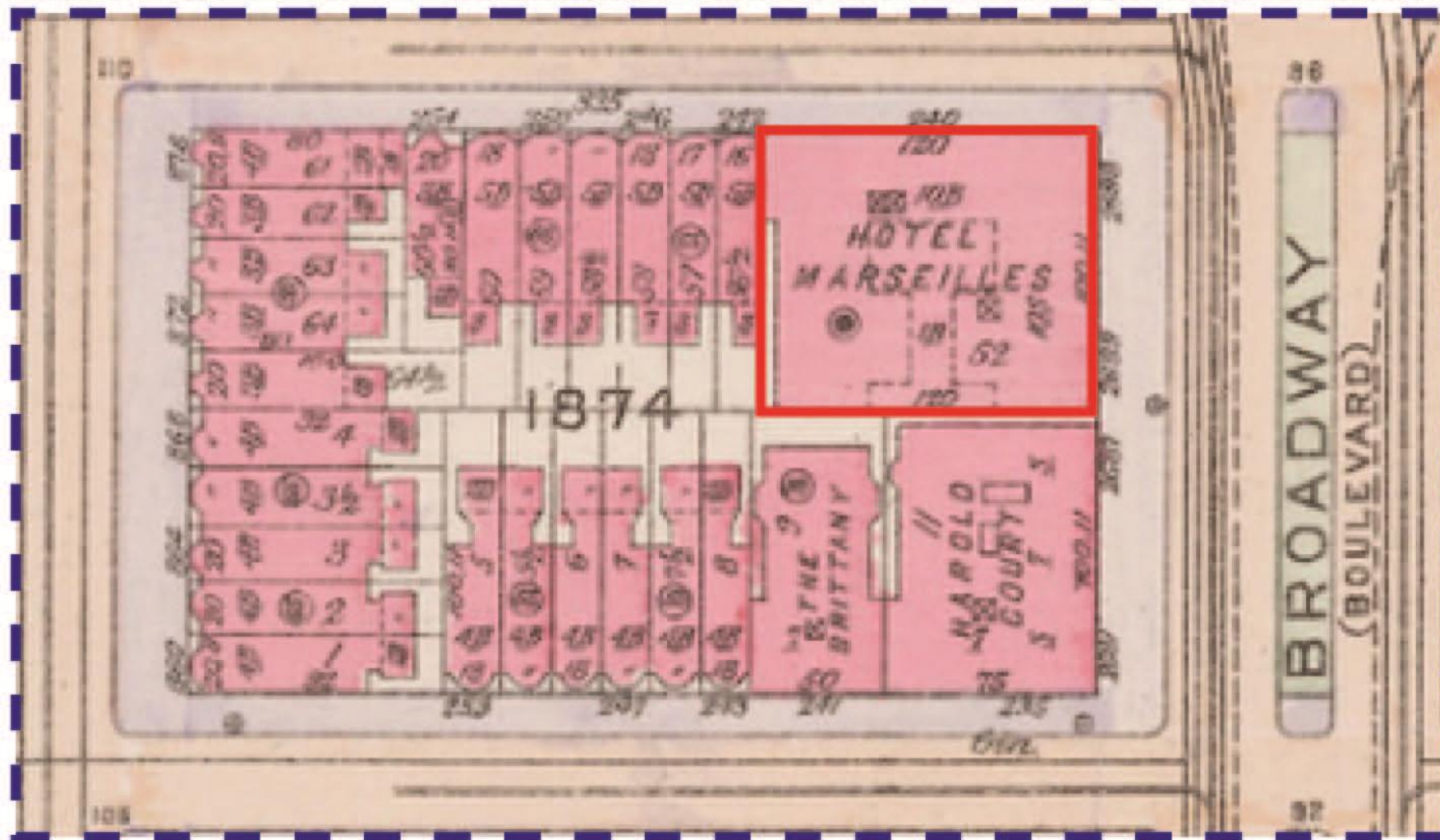


**Former Hotel Marseilles Window Modifications**  
230 West 103<sup>rd</sup> St., New York, NY 10025

Landmarks Preservation Commission  
May, 2017









Hotel Marseilles Pre-1915



Hotel Marseilles Circa 1915



Hotel Marseilles Circa 1920



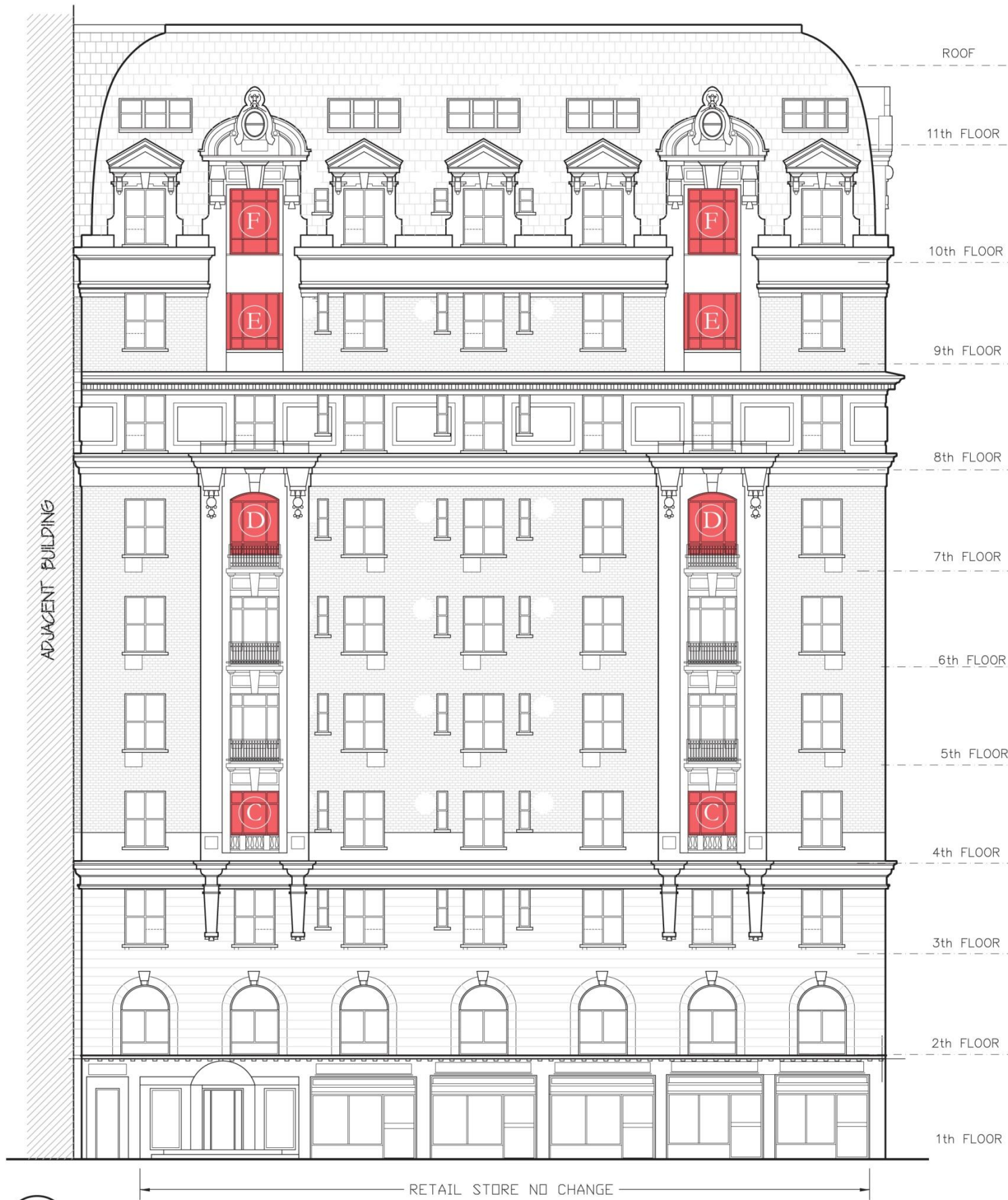
Circa 1940 Tax Photo



Landmarks Designation Photo 1990



Current 2016 Photo



1 BROADWAY ELEVATION  
SCALE: 1/16" = 1'-0"

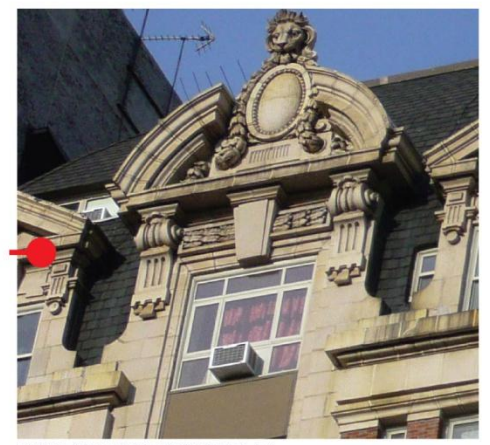


2 WEST 103RD STREET ELEVATION  
SCALE: 1/16" = 1'-0"

- KEY:**
- Windows Proposed for Legalization ■
  - Windows Proposed to be Replaced ■
  - Windows Proposed to Modified ■



1 WEST 103RD STREET ELEVATION  
SCALE: 1/16" = 1'-0"



WINDOW TYPE F



WINDOW TYPE E



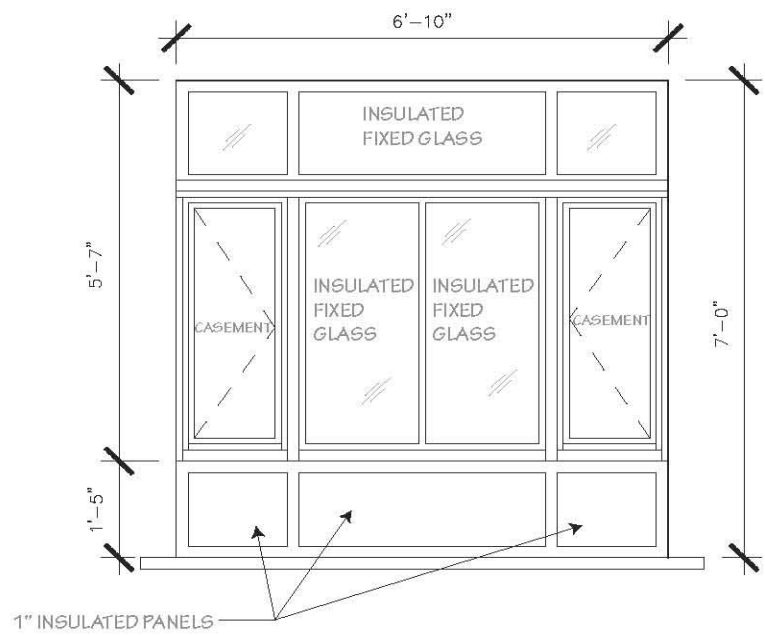
WINDOW TYPE D



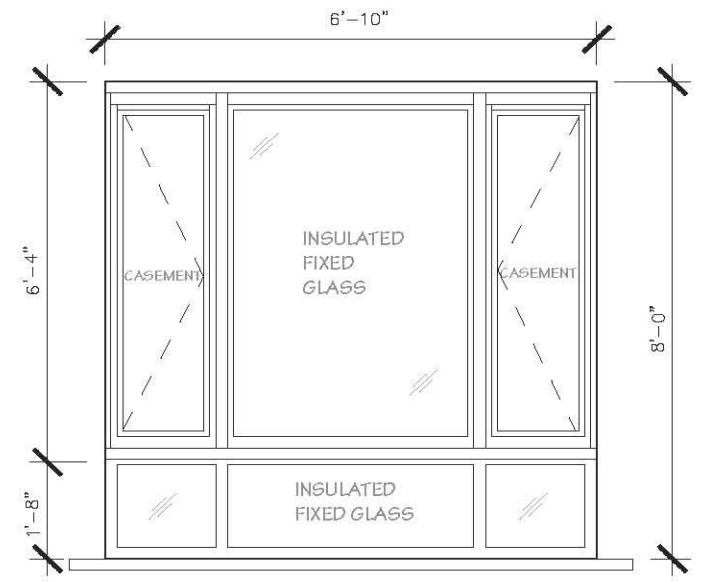
WINDOW TYPE C



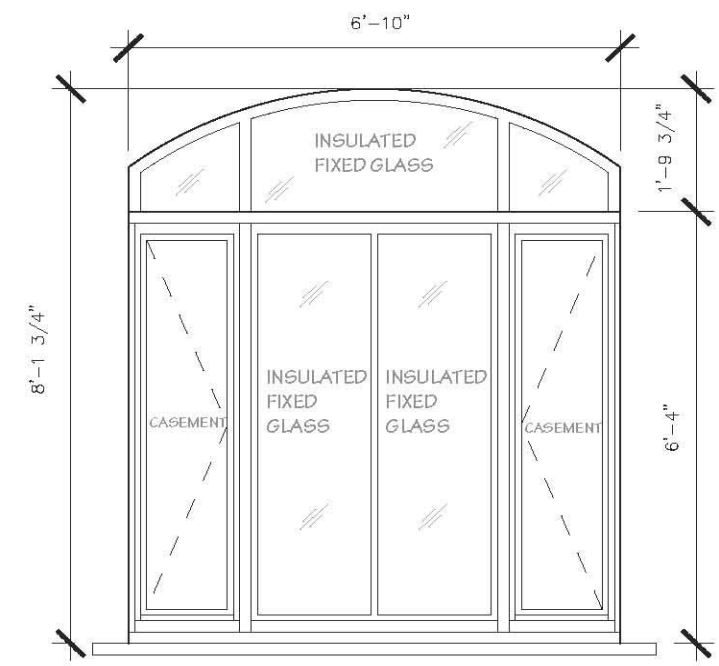
WINDOW TYPE B2



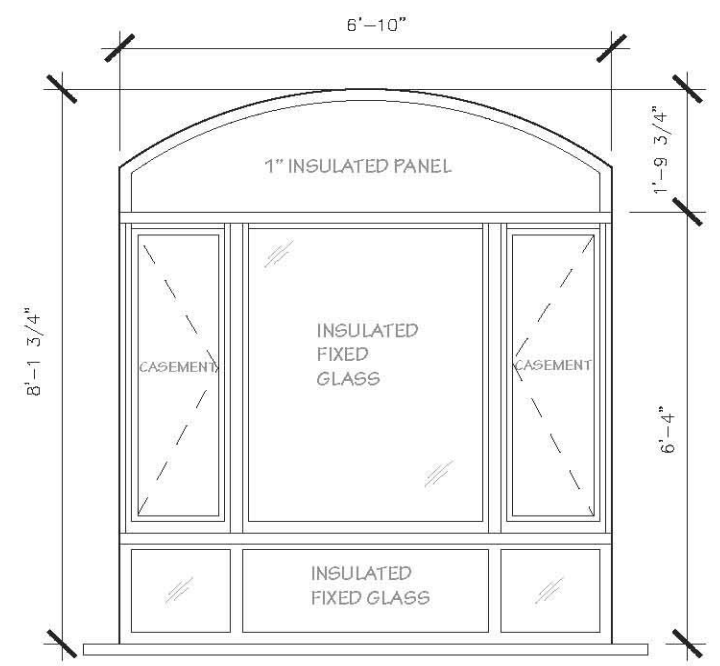
1 APPROVED LPC WINDOW TYPE C  
 UNDER COFA # 11-4192, ON 11/15/2010  
 SCALE: 3/8" = 1'-0"



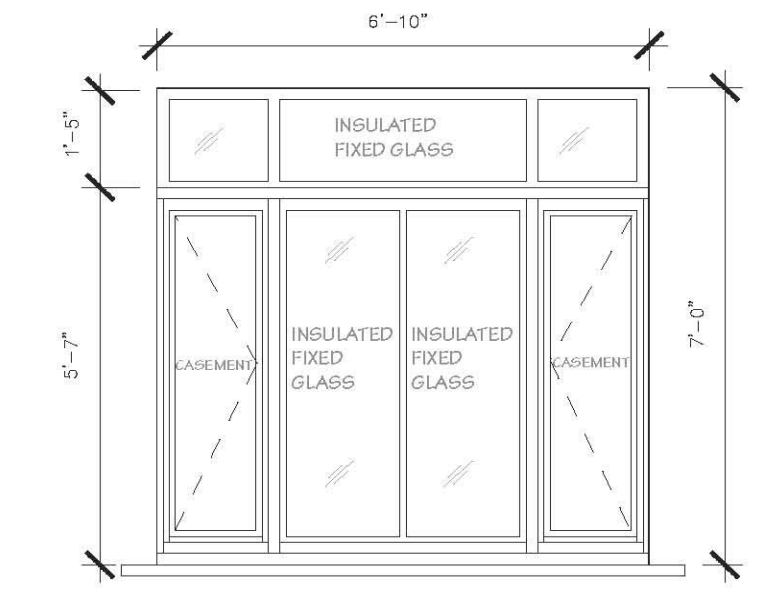
2 INSTALLED WINDOW TYPE C  
 SCALE: 3/8" = 1'-0"



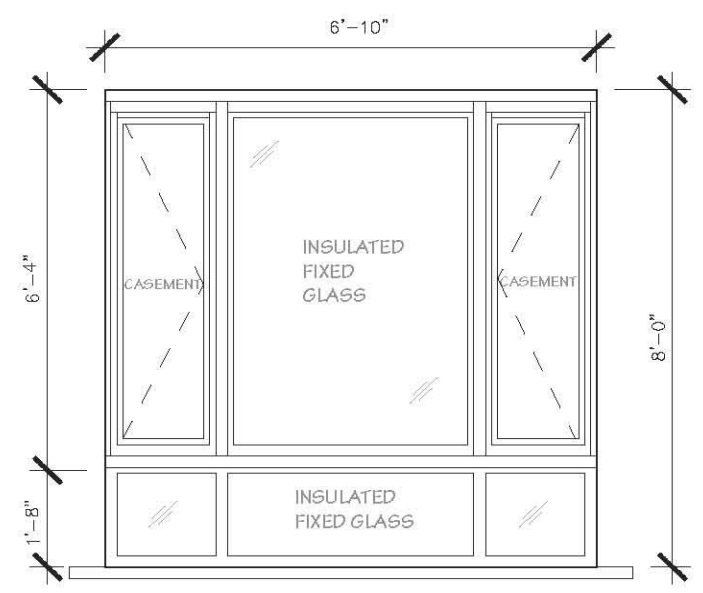
3 APPROVED LPC WINDOW TYPE D  
 UNDER COFA # 11-4192, ON 11/15/2010  
 SCALE: 3/8" = 1'-0"



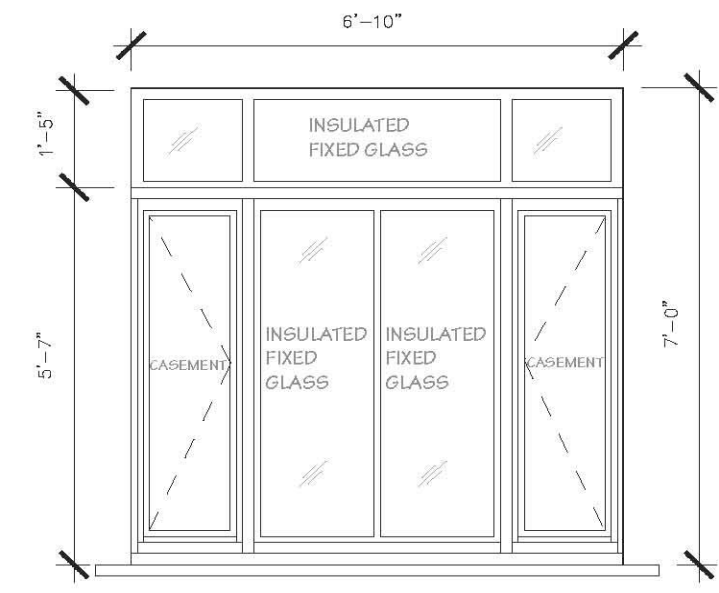
4 INSTALLED WINDOW TYPE D  
 SCALE: 3/8" = 1'-0"



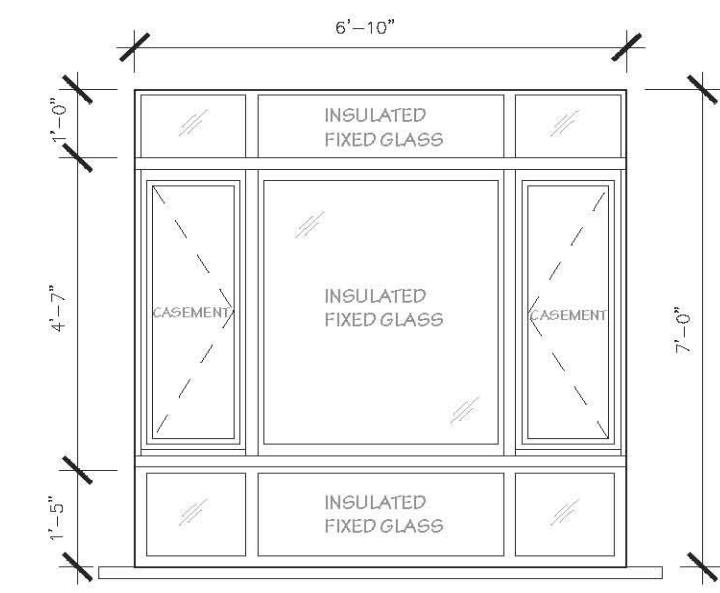
5 APPROVED LPC WINDOW TYPE E  
 UNDER COFA # 11-4192, ON 11/15/2010  
 SCALE: 3/8" = 1'-0"



6 INSTALLED WINDOW TYPE E  
 SCALE: 3/8" = 1'-0"

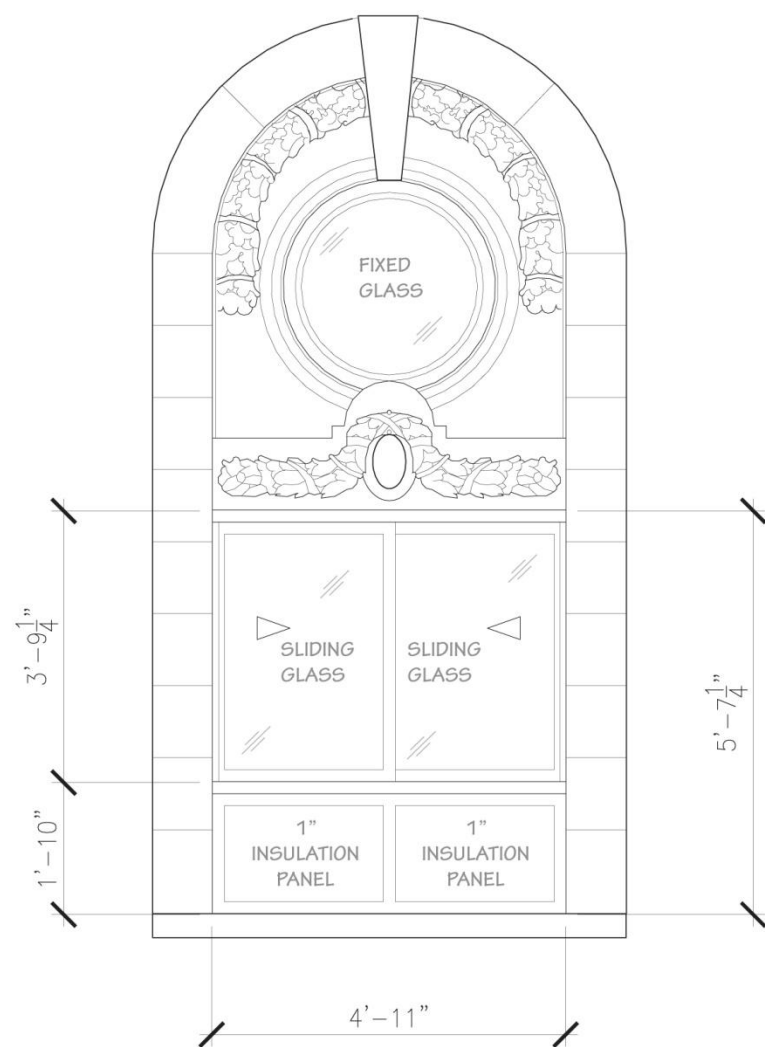


7 APPROVED LPC WINDOW TYPE F  
 UNDER COFA # 11-4192, ON 11/15/2010  
 SCALE: 3/8" = 1'-0"



8 INSTALLED WINDOW TYPE F  
 SCALE: 3/8" = 1'-0"



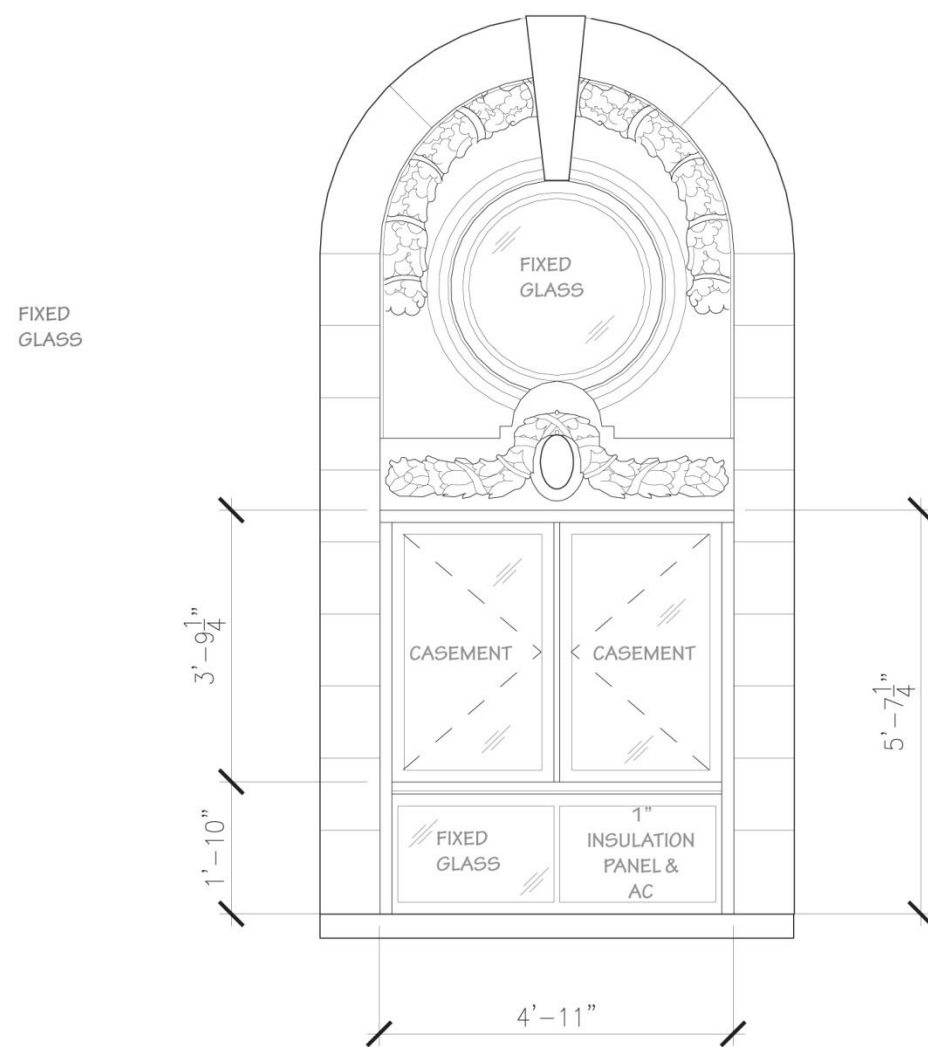


1 APPROVED LPC WINDOW TYPE B  
 UNDER COFA # 11-4192, ON 11/15/2010  
 SCALE: 3/8" = 1'-0"



INSTALLED WINDOW TYPE B FROM INTERIOR

Marseilles LLC, Windows  
 230 W. 103rd St. New York, NY



2 PROPOSED MODIFICATION TO WINDOW TYPE B1  
 SCALE: 3/8" = 1'-0"

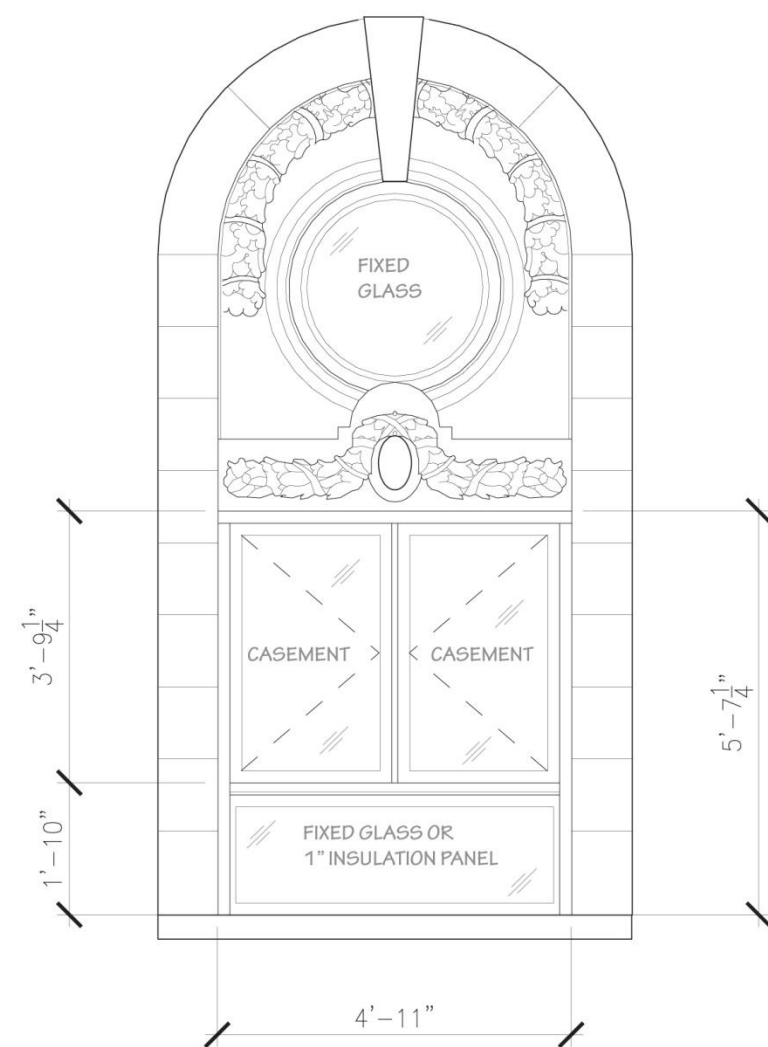


REMOVE EXISTING 1" INSULATION PANEL AND AC UNIT. INSTALL WITHIN EXISTING FRAME A NEW FIXED GLASS WINDOW PANEL AND NEW 1" INSULATION PANEL TO BE SEASONALLY REMOVED FOR AC INSTALLATION.

INSTALLED WINDOW TYPE B1 WITH AIR CONDITIONER UNIT

LPC Presentation  
 May, 2017

Proposed for Modification Type B1  
 Proposed for Legalization Type B2



3 INSTALLED WINDOW TYPE B2  
 SCALE: 3/8" = 1'-0"



INSTALLED WINDOW TYPE B2 WITH GLASS PANEL

LI · SALTZMAN ARCHITECTS, PC  
 ARCHITECTURE AND PRESERVATION



WINDOW TYPE A CIRCA 1912



CURRENT WINDOW TYPE A

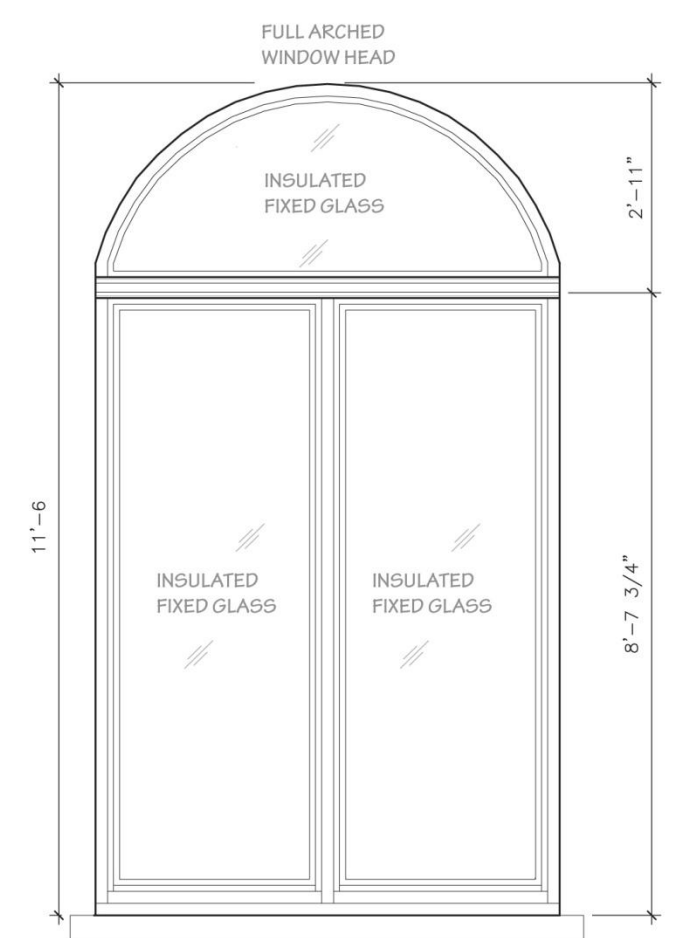
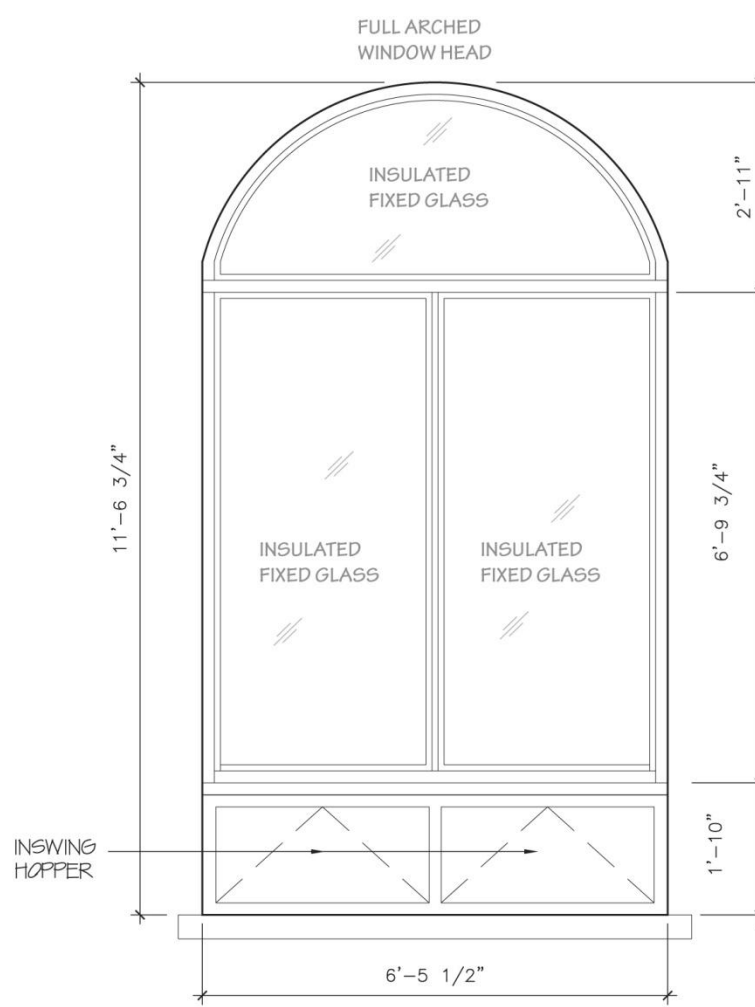
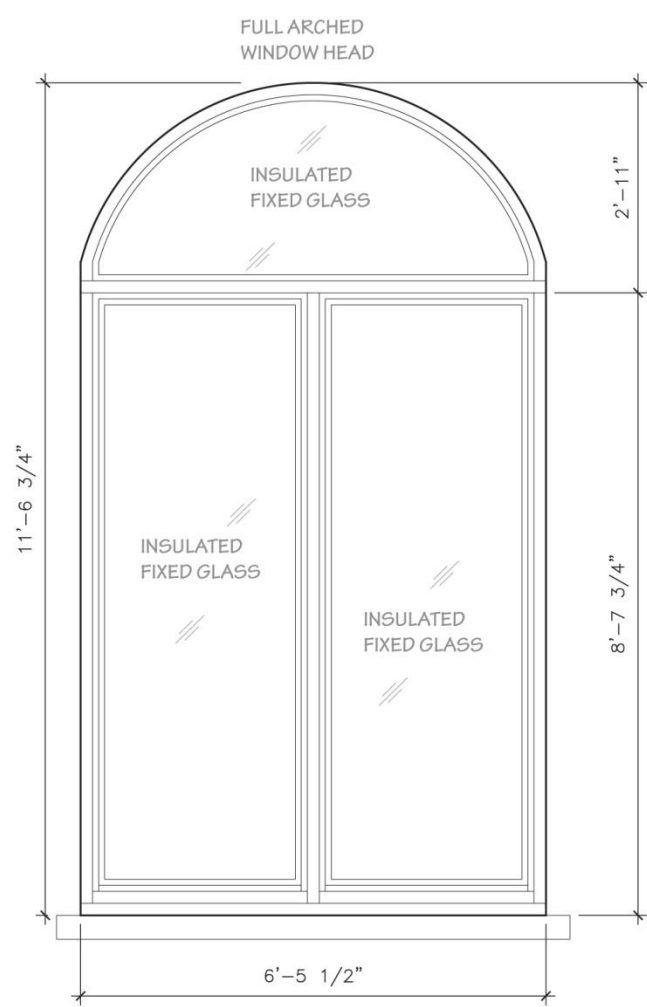
1 WEST 103RD STREET ELEVATION  
SCALE: 1/16" = 1'-0"



1 PROPOSED WEST 103RD STREET ELEVATION  
 SCALE: 1/16" = 1'-0"



1 PROPOSED WEST 103RD STREET ELEVATION  
SCALE: 1/16" = 1'-0"



1 APPROVED LPC WINDOW TYPE A  
 UNDER COFA # 11-4192, ON 11/15/2010  
 SCALE: 3/8" = 1'-0"

2 INSTALLED WINDOW TYPE A  
 SCALE: 3/8" = 1'-0"

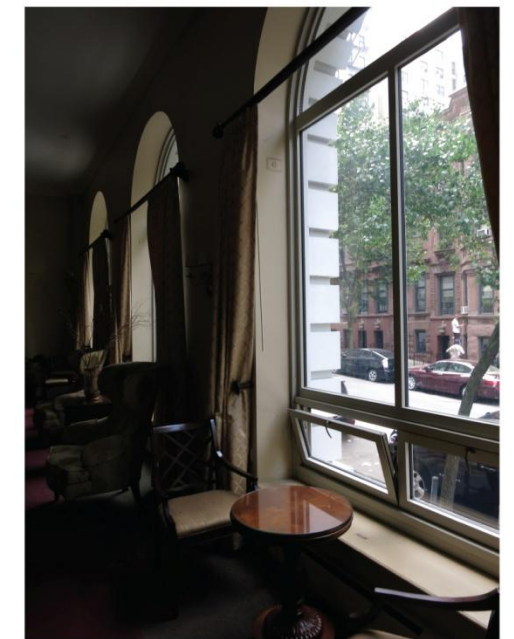
3 PROPOSED WINDOW TYPE A1  
 SCALE: 3/8" = 1'-0"



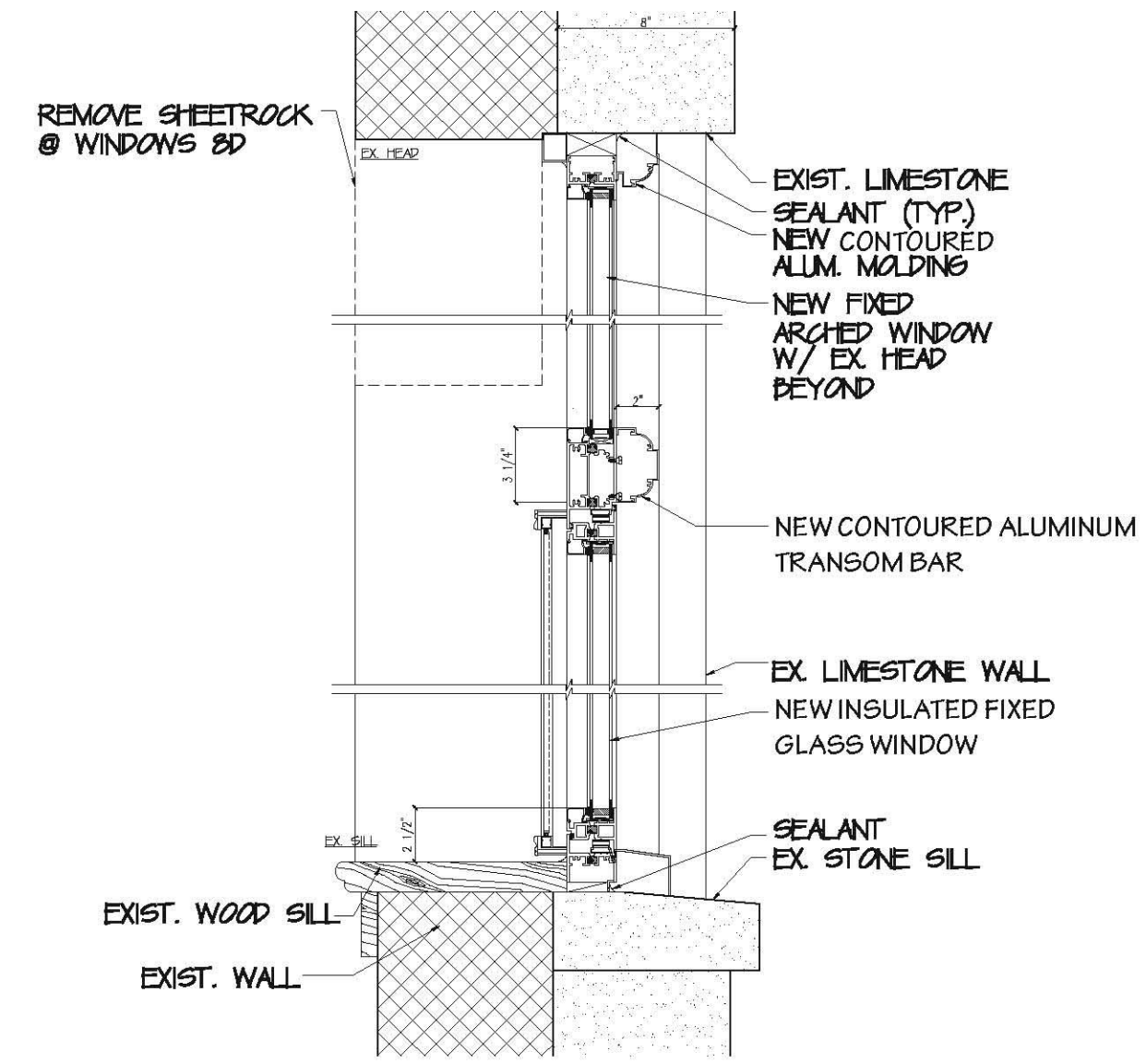
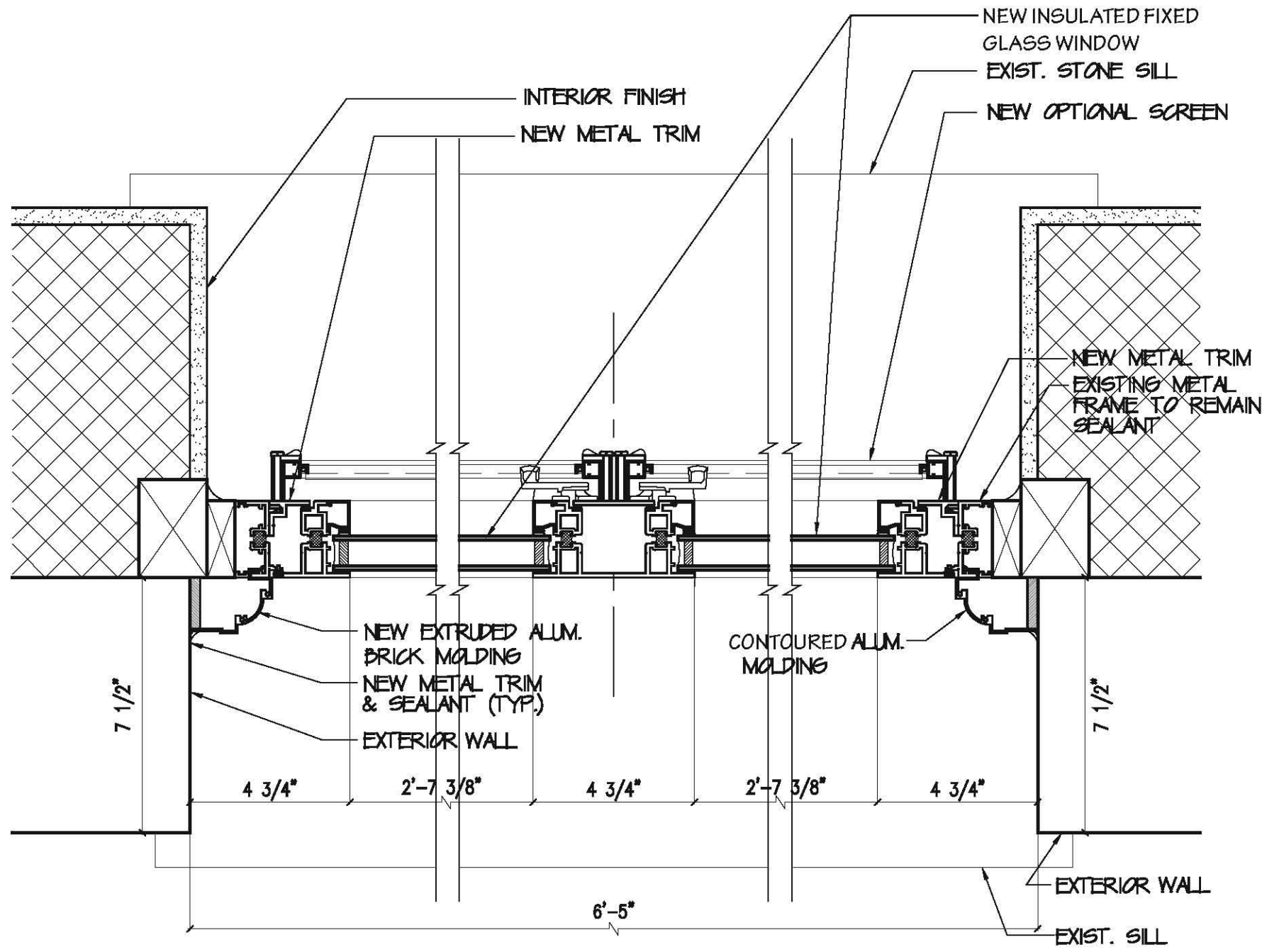
HISTORIC PHOTO OF WINDOW TYPE A CIRCA 1912



INSTALLED WINDOW TYPE A EXTERIOR

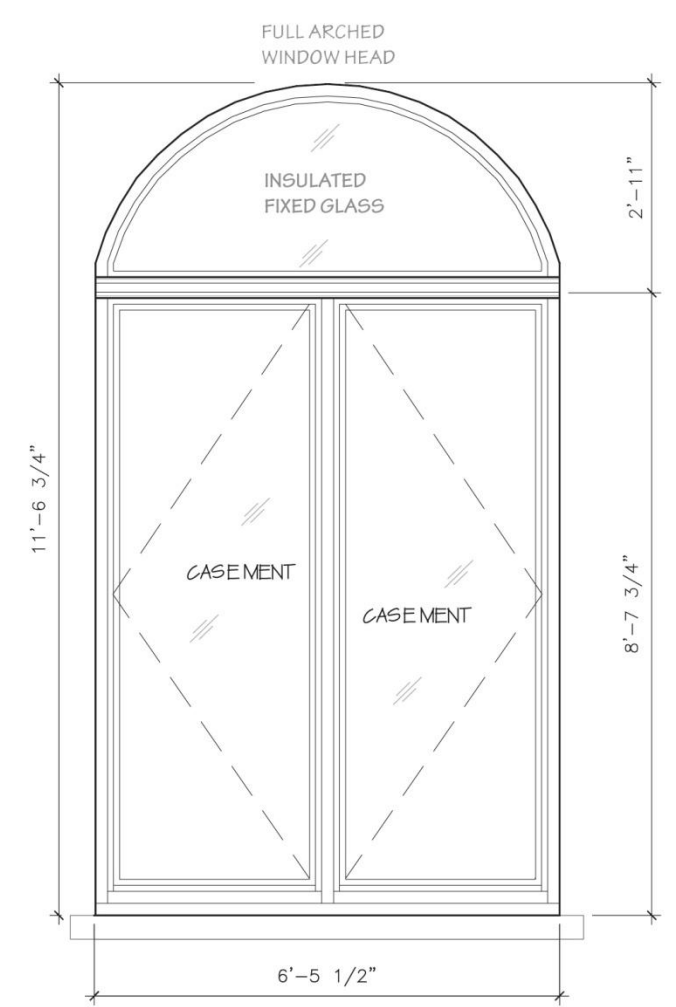
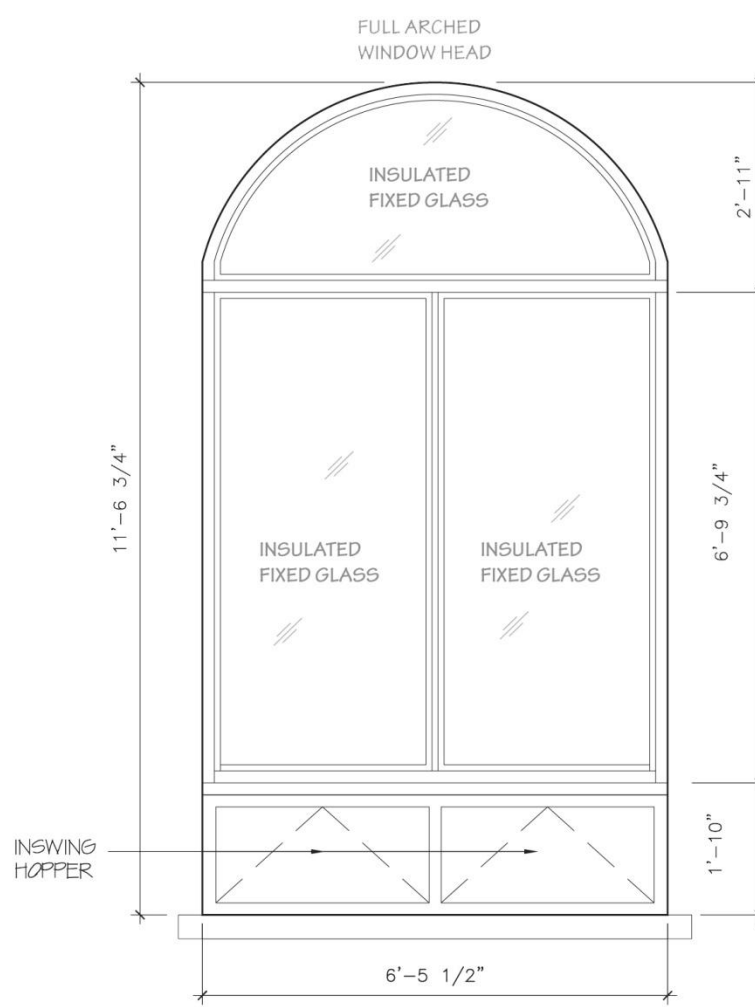
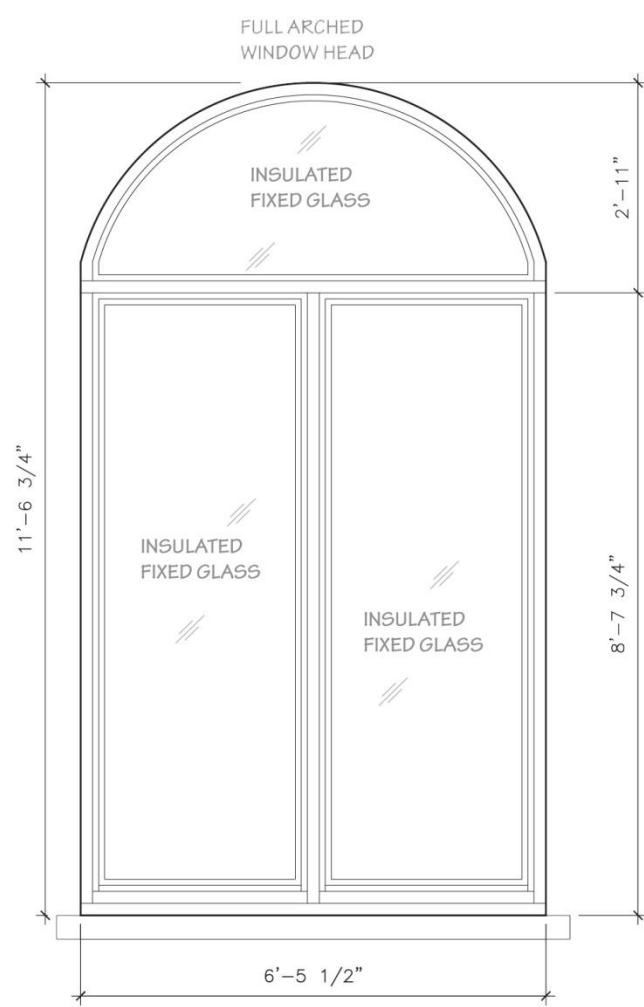


INSTALLED WINDOW TYPE A INTERIOR



1 PROPOSED WINDOW TYPE A1 PLAN  
SCALE: 3" = 1'-0"

2 PROPOSED WINDOW TYPE A1 SECTION  
SCALE: 1-1/2" = 1'-0"



1 APPROVED LPC WINDOW TYPE A  
 UNDER COFA # 11-4192, ON 11/15/2010  
 SCALE: 3/8" = 1'-0"

2 INSTALLED WINDOW TYPE A  
 SCALE: 3/8" = 1'-0"

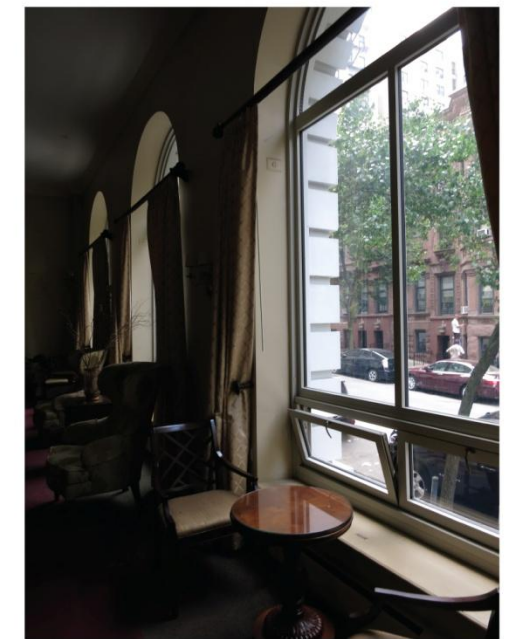
3 PROPOSED WINDOW TYPE A2  
 SCALE: 3/8" = 1'-0"



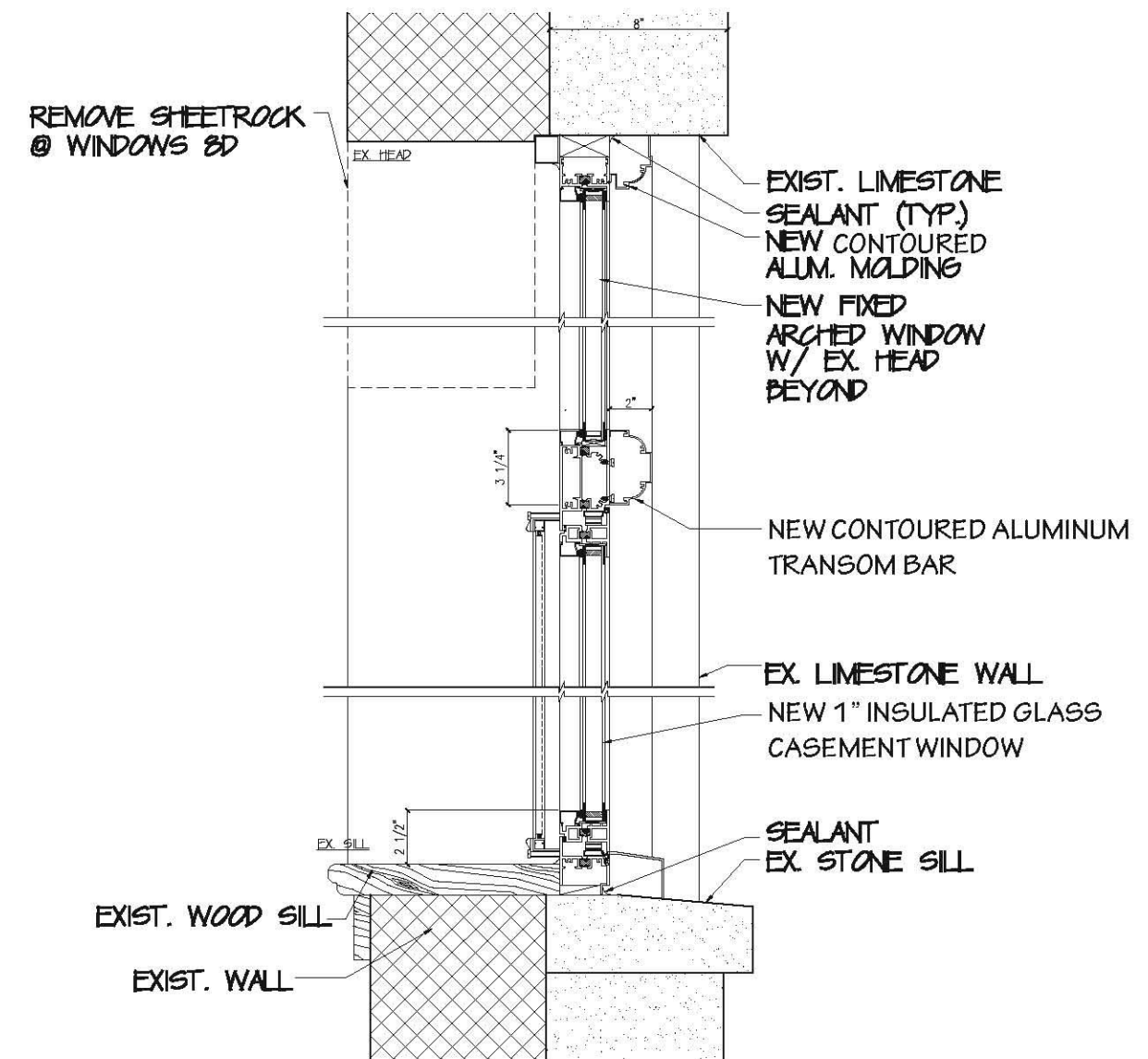
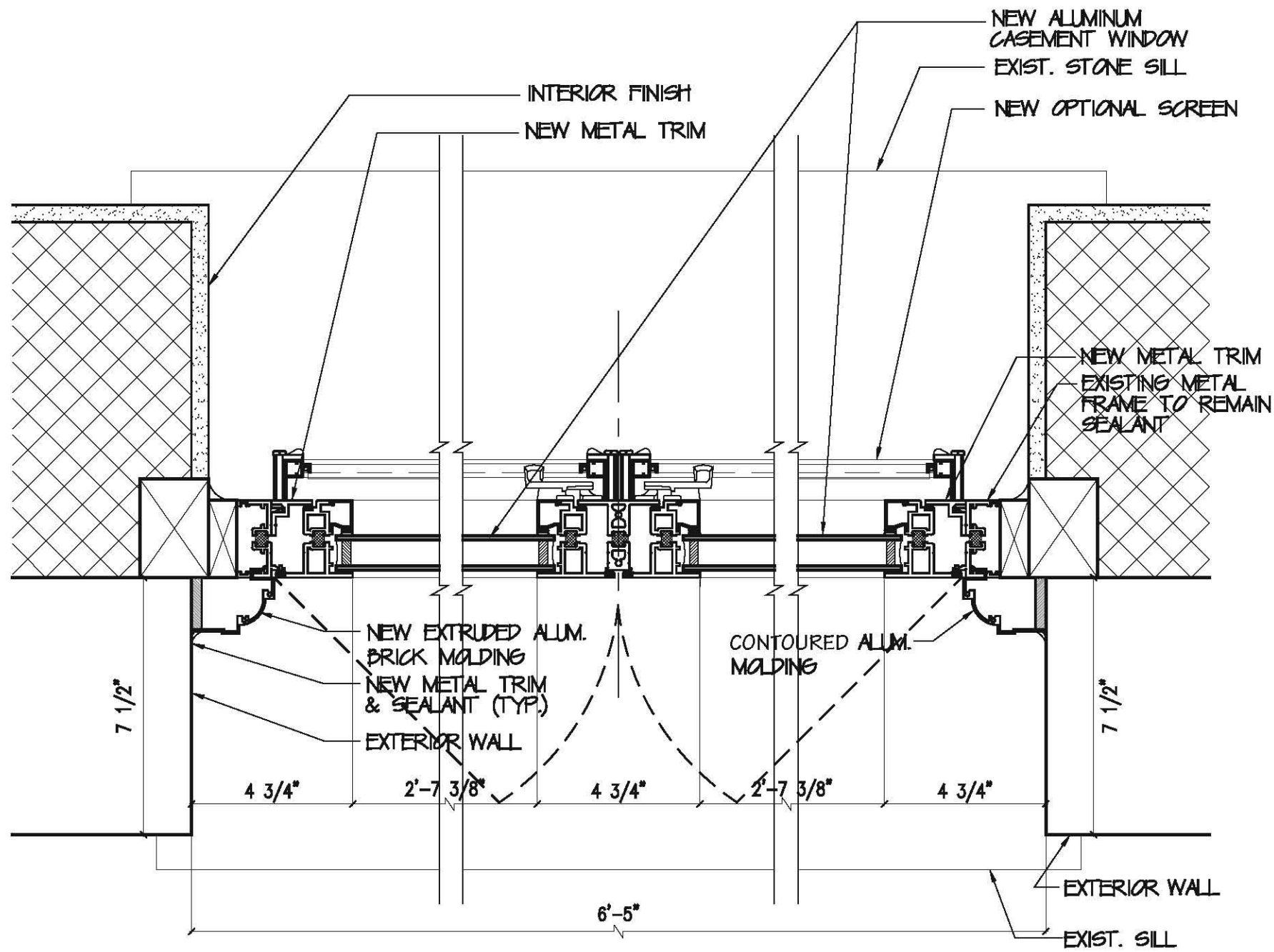
HISTORIC PHOTO OF WINDOW TYPE A CIRCA 1912



INSTALLED WINDOW TYPE A EXTERIOR



INSTALLED WINDOW TYPE A INTERIOR



1 PROPOSED WINDOW TYPE A2 PLAN  
SCALE: 3" = 1'-0"

2 PROPOSED WINDOW TYPE A2 SECTION  
SCALE: 1-1/2" = 1'-0"