



## CHATSWORTH

72d St. and Riverside Drive

Situated at Riverside Drive and Seventy-second street, and overlooking Riverside Park, the views from the windows of this apartment house are panoramic as well as picturesque.

The house is of a fireproof type and is designed for the highest class of tenants. The apartments are housekeeping suites of five rooms and one bath and intermediate sizes up to fifteen rooms and four baths. The cabinet and decorative work is carried out consistently with the high-class construction and character of the house.

A conservatory has been erected as the mansard story, and is furnished as a sun-parlor for the comfort and convenience of the tenants.

Extra servant's rooms, in the basement, may be rented.

Five elevators are in operation, making separate provision for guests, servants and freight. These are maintained at all hours.



# Chatsworth

1902, John E. Scharsmith



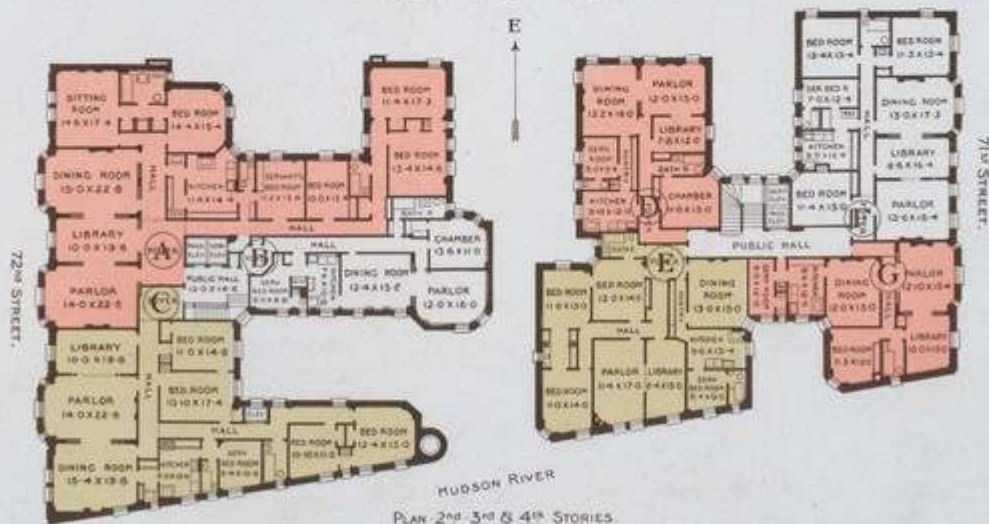
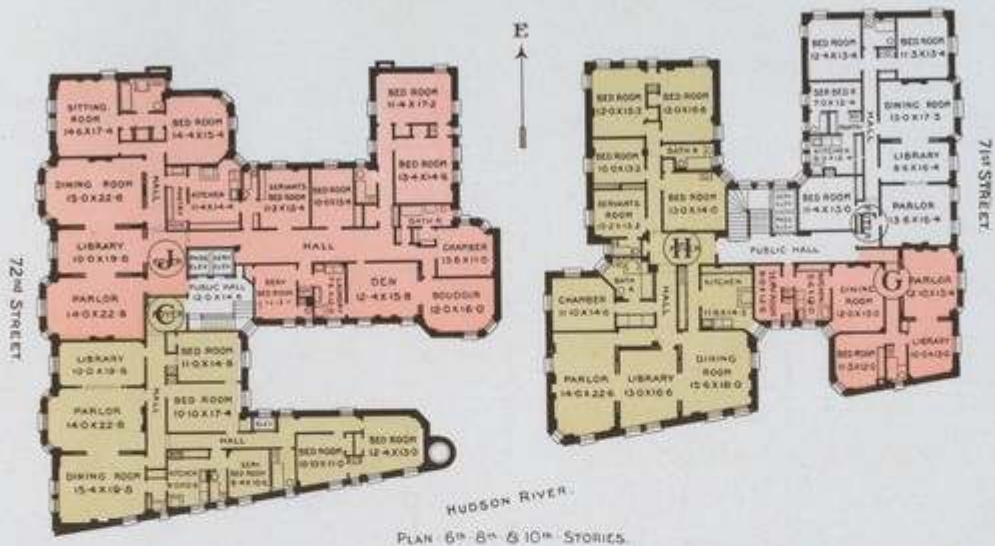
Chatsworth  
Tax Photo



*The Chatsworth and Chatsworth Annex*







FLOOR PLANS OF THE CHATSWORTH.  
(SEE ALSO NEXT PAGE)

**T**HE CHATSWORTH'S apartments are housekeeping suites of five rooms and one bath, and intermediate sizes, up to fifteen rooms and four baths, according to plans. A conservatory on the Mansard story is richly furnished and is conducted as a sun parlor for the comfort and convenience of tenants; also a billiard parlor and cafe in the second basement and a first-class barber shop, ladies' hair dressing parlor and valet and tailor service.

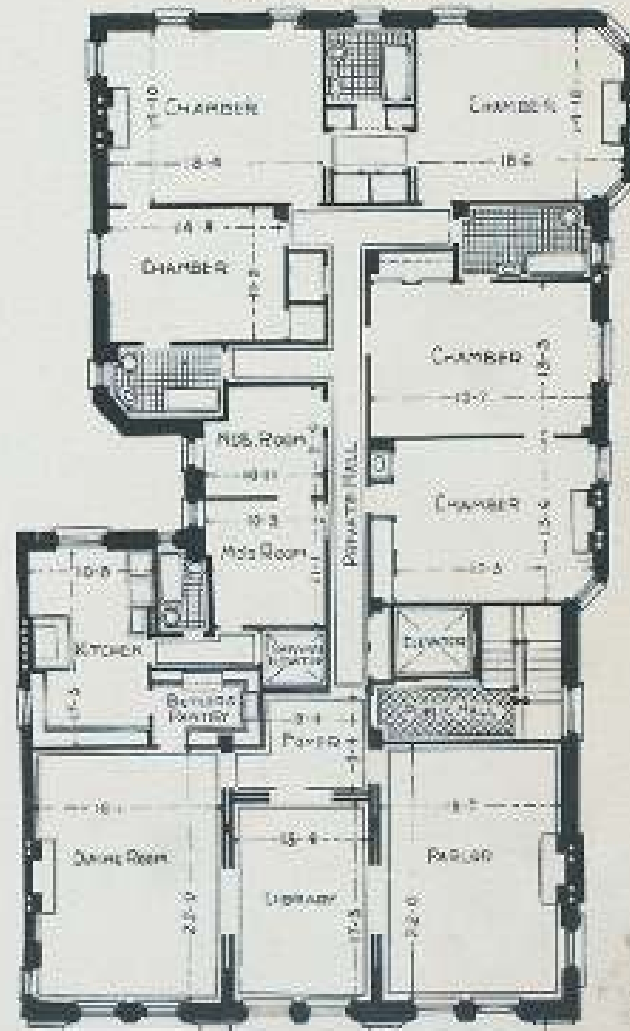
Five elevators are in operation, making separate provision for guests, servants and freight.

The Annex is designed for one apartment on a floor of eleven rooms and four baths and is in keeping and under the same management as the Chatsworth.

The whole plot covers 170 feet on 72nd street, 208 feet on the river front and 90 feet on 71st street.

Rents of the Chatsworth and Annex are from \$4,000 to \$4,500.

TYPICAL FLOOR PLAN





## CHATSWORTH

72d St. and Riverside Drive

Situated at Riverside Drive and Seventy-second street, and overlooking Riverside Park, the views from the windows of this apartment house are panoramic as well as picturesque.

The house is of a fireproof type and is designed for the highest class of tenants. The apartments are housekeeping suites of five rooms and one bath and intermediate sizes up to fifteen rooms and four baths. The cabinet and decorative work is carried out consistently with the high-class construction and character of the house.

A conservatory has been erected as the mansard story, and is furnished as a sun-parlor for the comfort and convenience of the tenants.

Extra servant's rooms, in the basement, may be rented.

Five elevators are in operation, making separate provision for guests, servants and freight. These are maintained at all hours.



# Chatsworth

1902, John E. Scharsmith



Chatsworth  
Tax Photo





*The Chatsworth and Chatsworth Annex*







**Original Marquee**





Entryway Detail





Ironwork  
Detail



**Ironwork  
Detail**



Ironwork  
Detail



Doorway  
Light



Doorway



Main  
Entrance





# Entryway Detail

