

ARK HISTORICAL SOCIETY  
Leadville

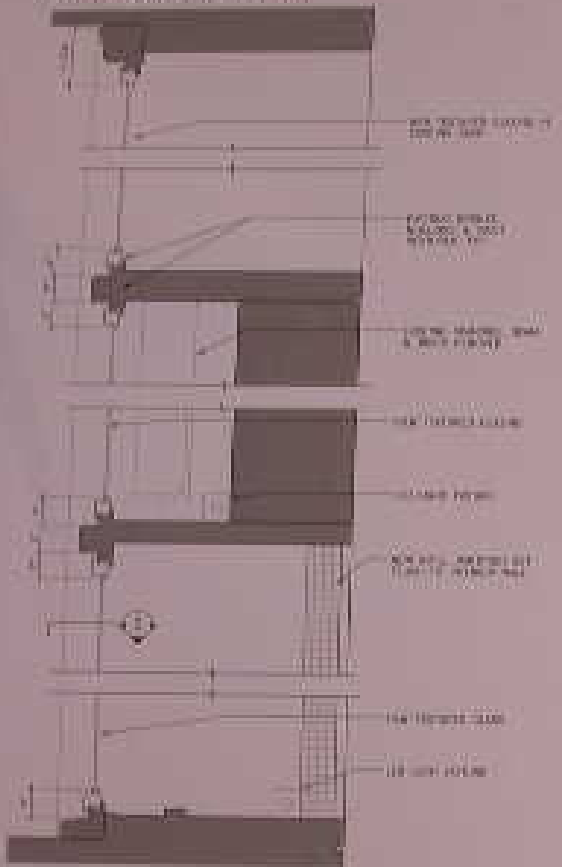
South Elevation Detail 1/2" = 1'-0"



NEW-YORK HISTORICAL SOCIETY  
Hall David Good White  
1887-1888

1037 Walnut & 311000

North/South Upper Window

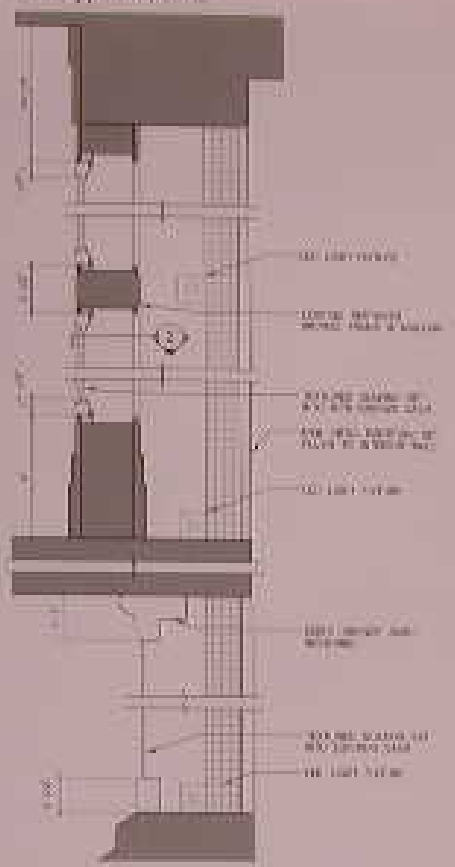


1- Section Details - Proposed



2- Plan Detail - Proposed

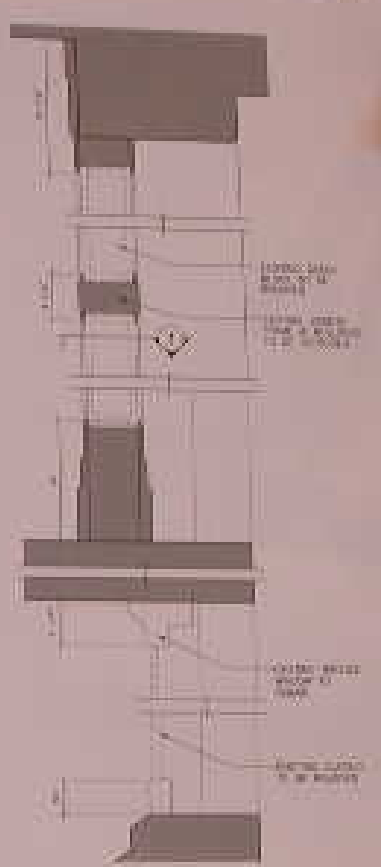
East Upper Window



3- Section Details - Proposed



4- Plan Detail - Proposed

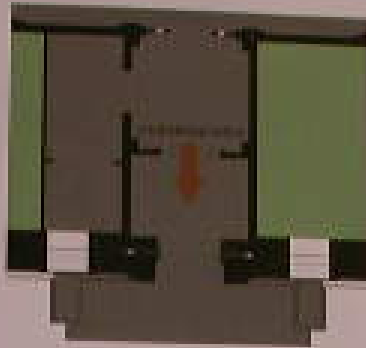


5- Section Details - Existing



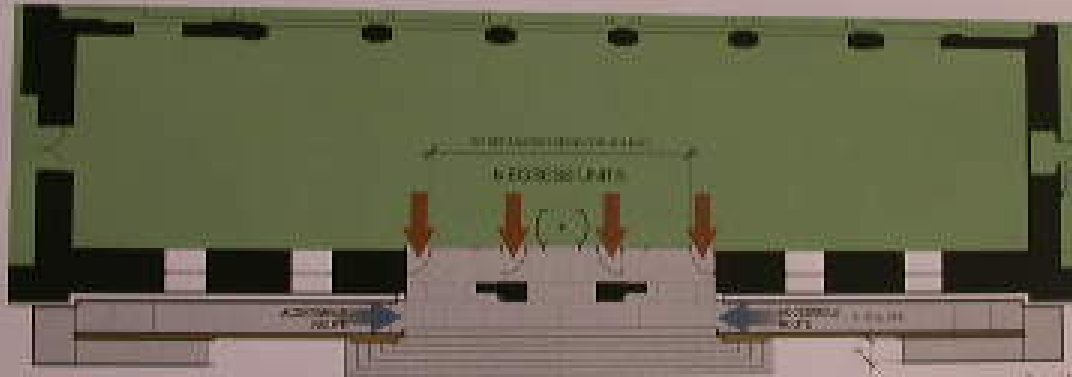
6- Plan Detail - Existing

Window Details



00123 1400 0011

00113 0011



00123 1400 0011

00113 0011



VIEW FROM ROOMING & RESTROOMS ON 11/24/14  
10/17/14



VIEW FROM ROOMING & RESTROOMS



VIEW FROM 11/24/14 FROM ROOMING & RESTROOMS  
10/17/14



VIEW FROM ROOMING & RESTROOMS ON 11/24/14  
10/17/14



VIEW FROM ROOMING & RESTROOMS ON 11/24/14  
10/17/14



VIEW FROM ROOMING & RESTROOMS



VIEW FROM ROOMING & RESTROOMS



VIEW FROM ROOMING & RESTROOMS



VIEW FROM ROOMING & RESTROOMS



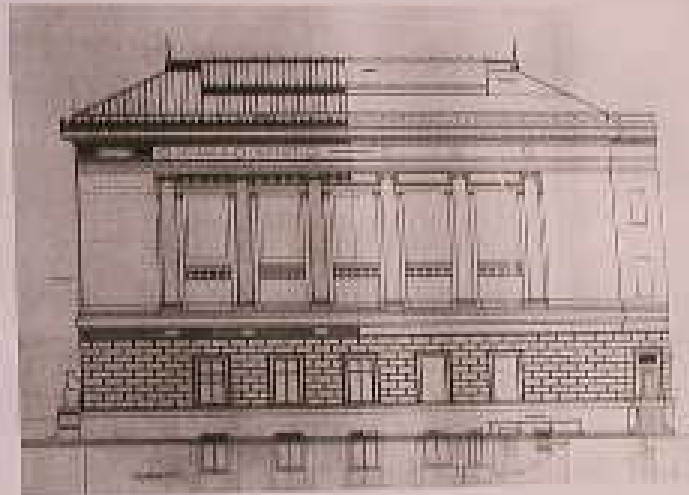
VIEW FROM ROOMING & RESTROOMS



VIEW FROM ROOMING & RESTROOMS ON 11/24/14  
10/17/14



VIEW FROM ROOMING & RESTROOMS ON 11/24/14  
10/17/14

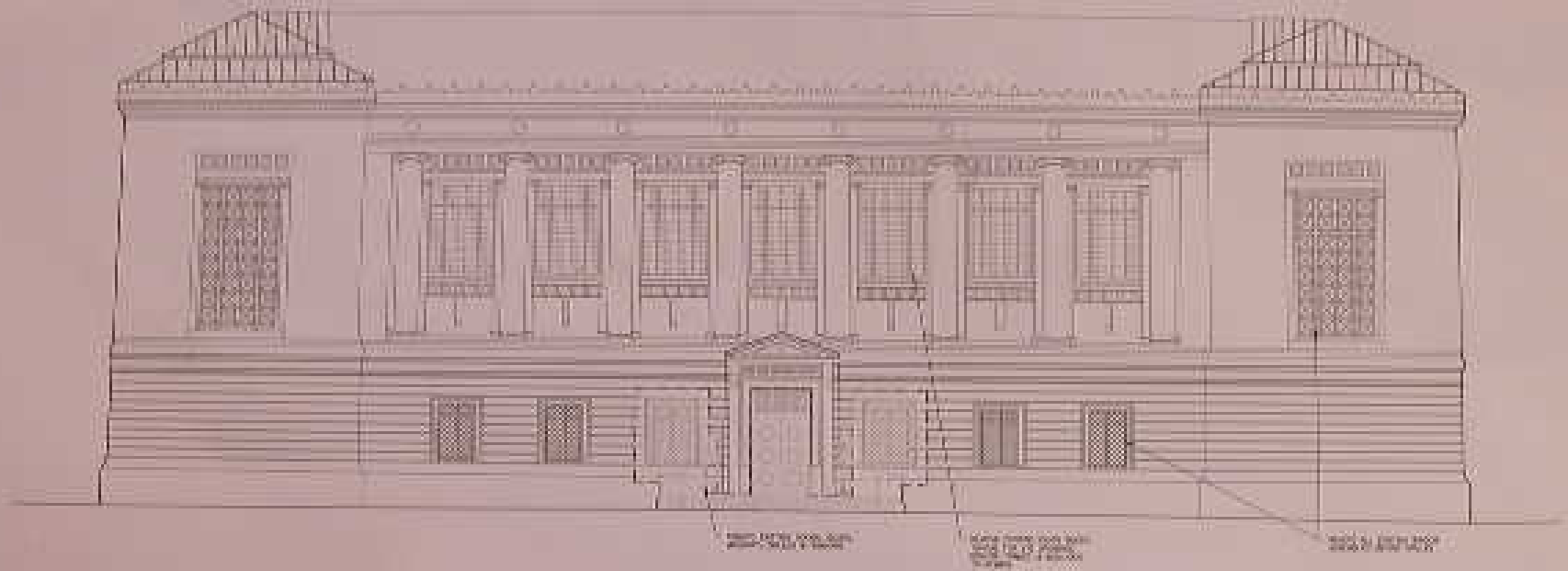


OLK HISTORICAL SOCIETY

David White

1904 York & Sawyer



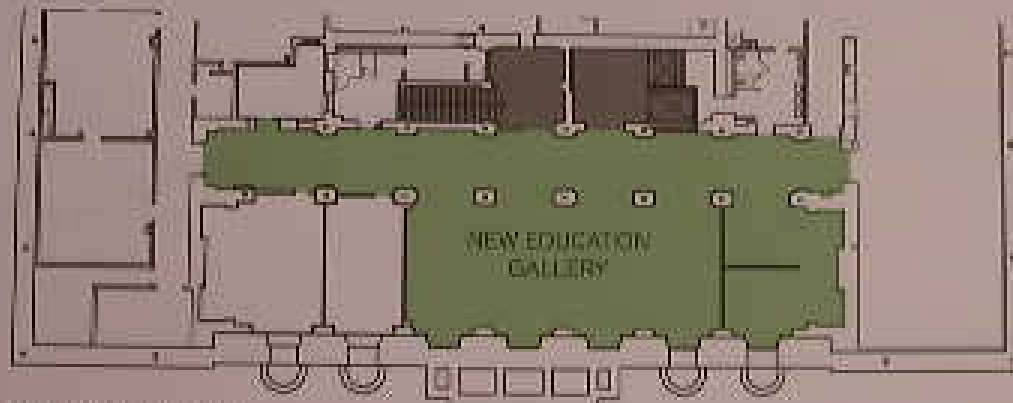


ORK HISTORICAL SOCIETY  
David White

East Elevation Demolition  
1/2" = 1'-0"  
2



Second Level Floor Plan



Lower Level Floor Plan

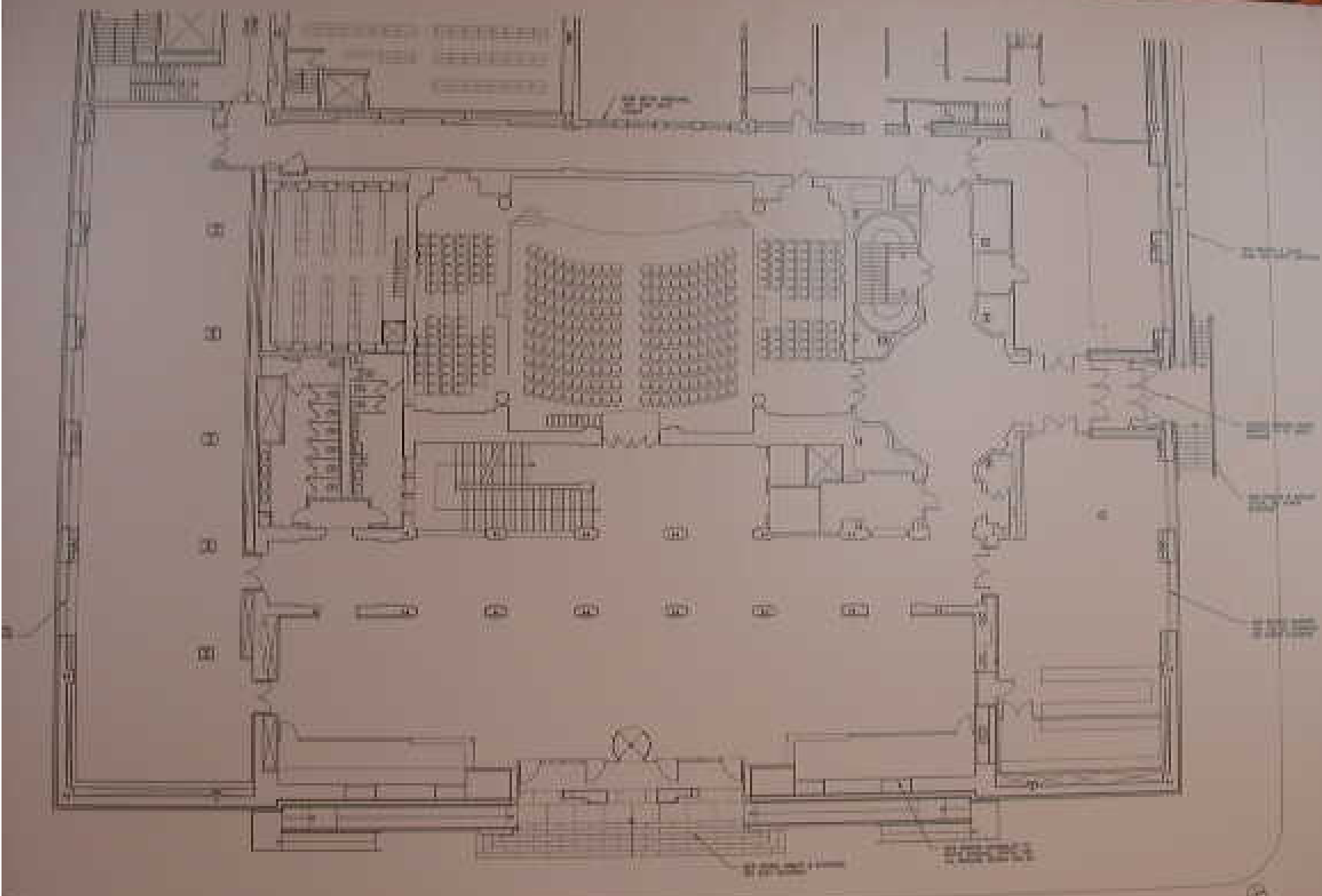


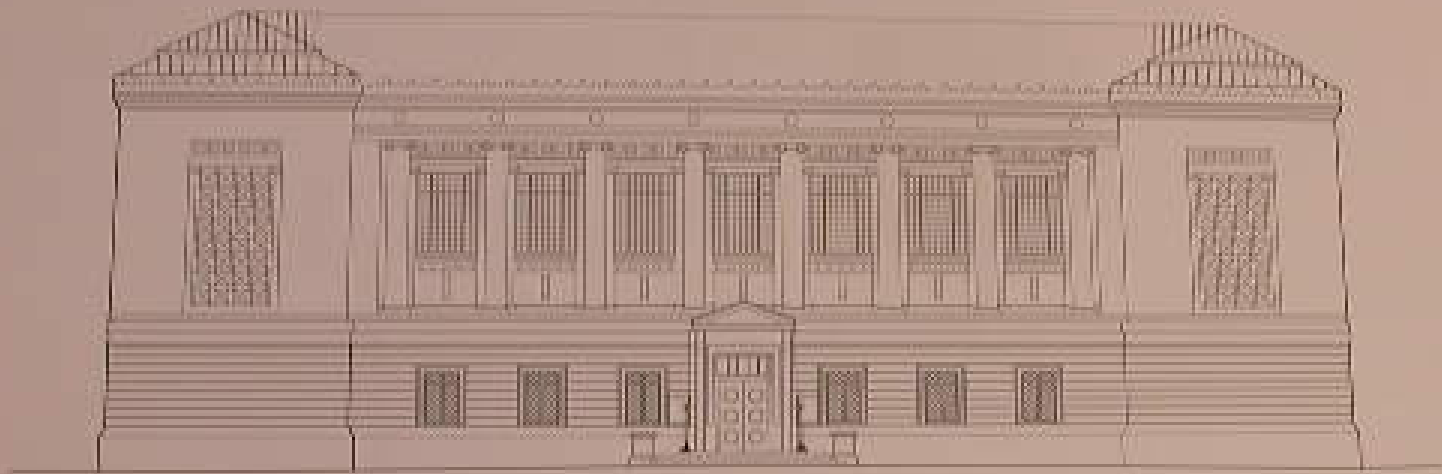


NEW YORK HISTORICAL SOCIETY  
© Robert Donald Weiss

Printed by R. F. Farnham

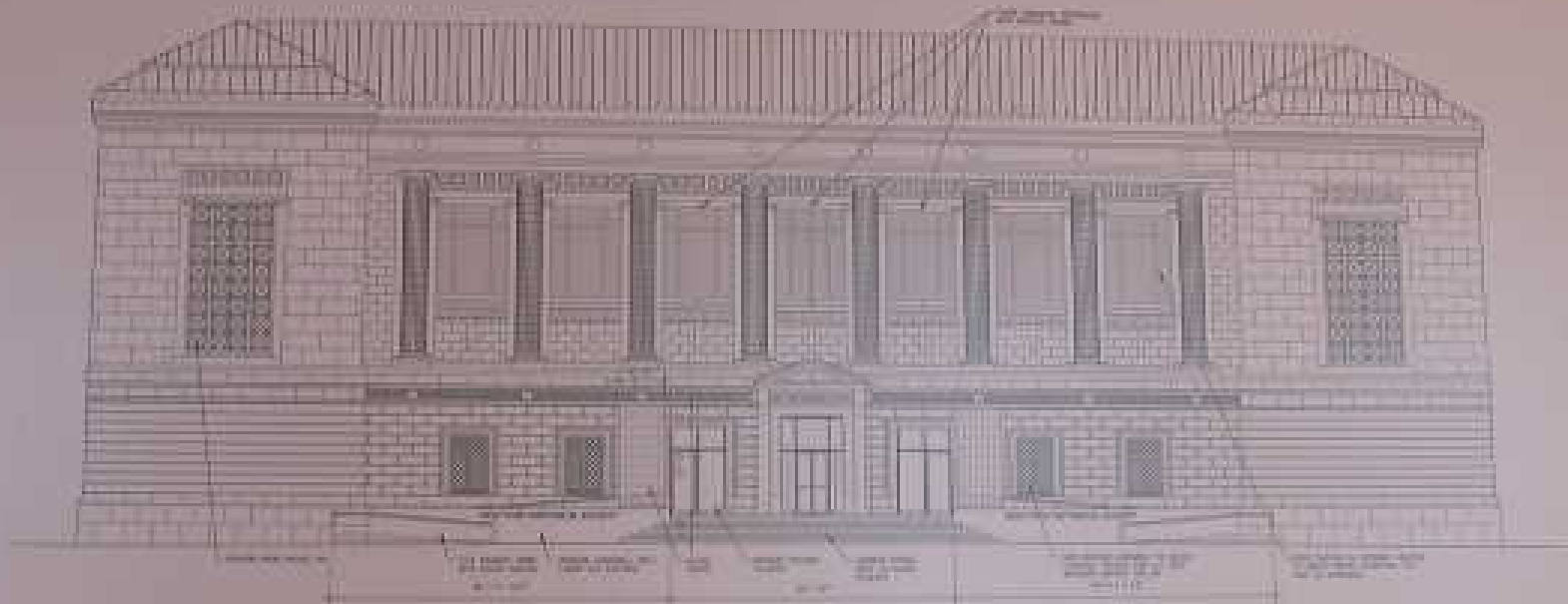






STORICAL SOCIETY

Existing East Facade 1/4" = 1'-0"



NEW-YORK HISTORICAL SOCIETY

Platt Byrd Gould White  
Architect 1857

Proposed East Elevation





NEW-YORK HISTORICAL SOCIETY

Flatt Hyard David White  
ARCHITECTS LLP

Entrance & Gallery ...

