



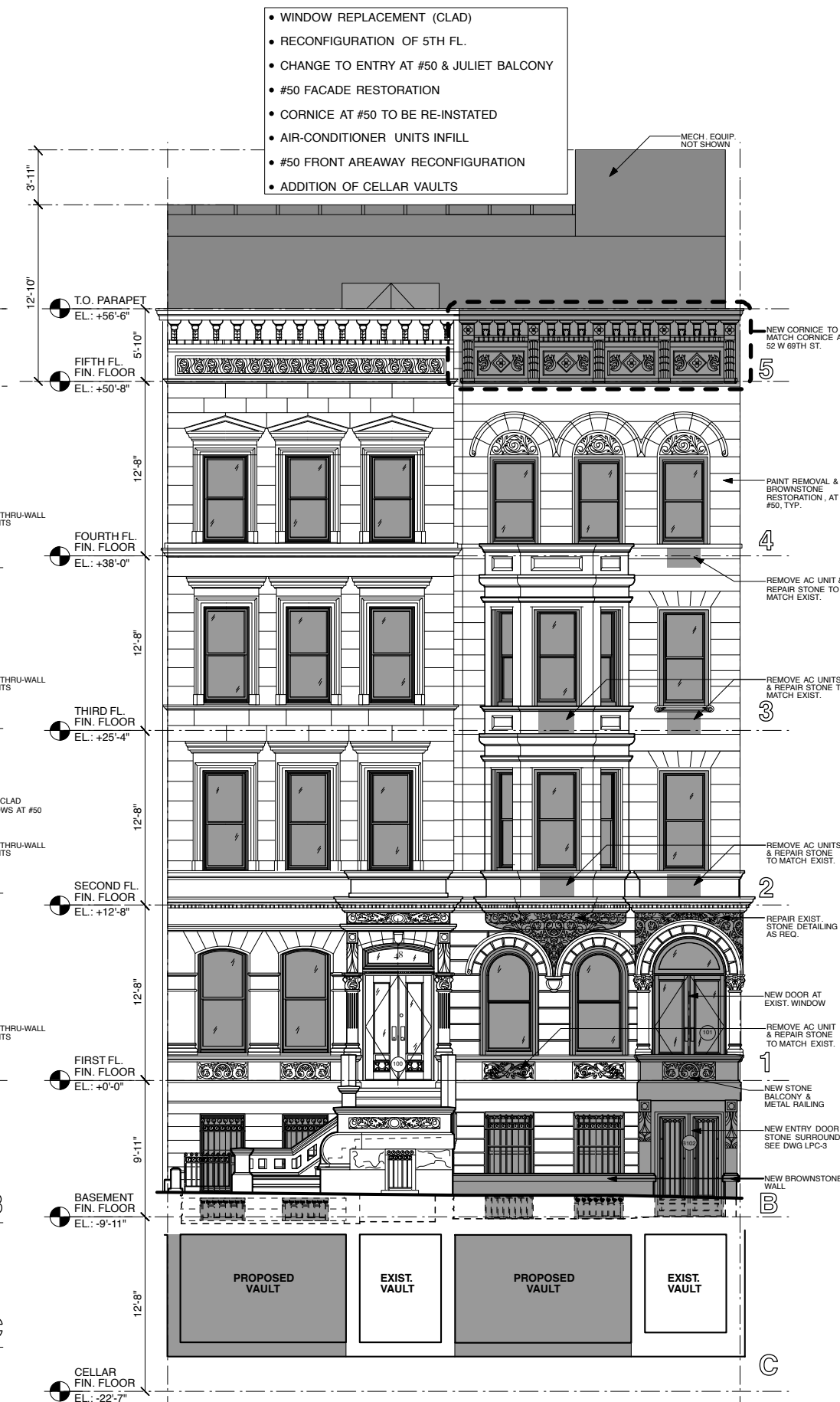
EXISTING FRONT ELEVATION & CONTEXT



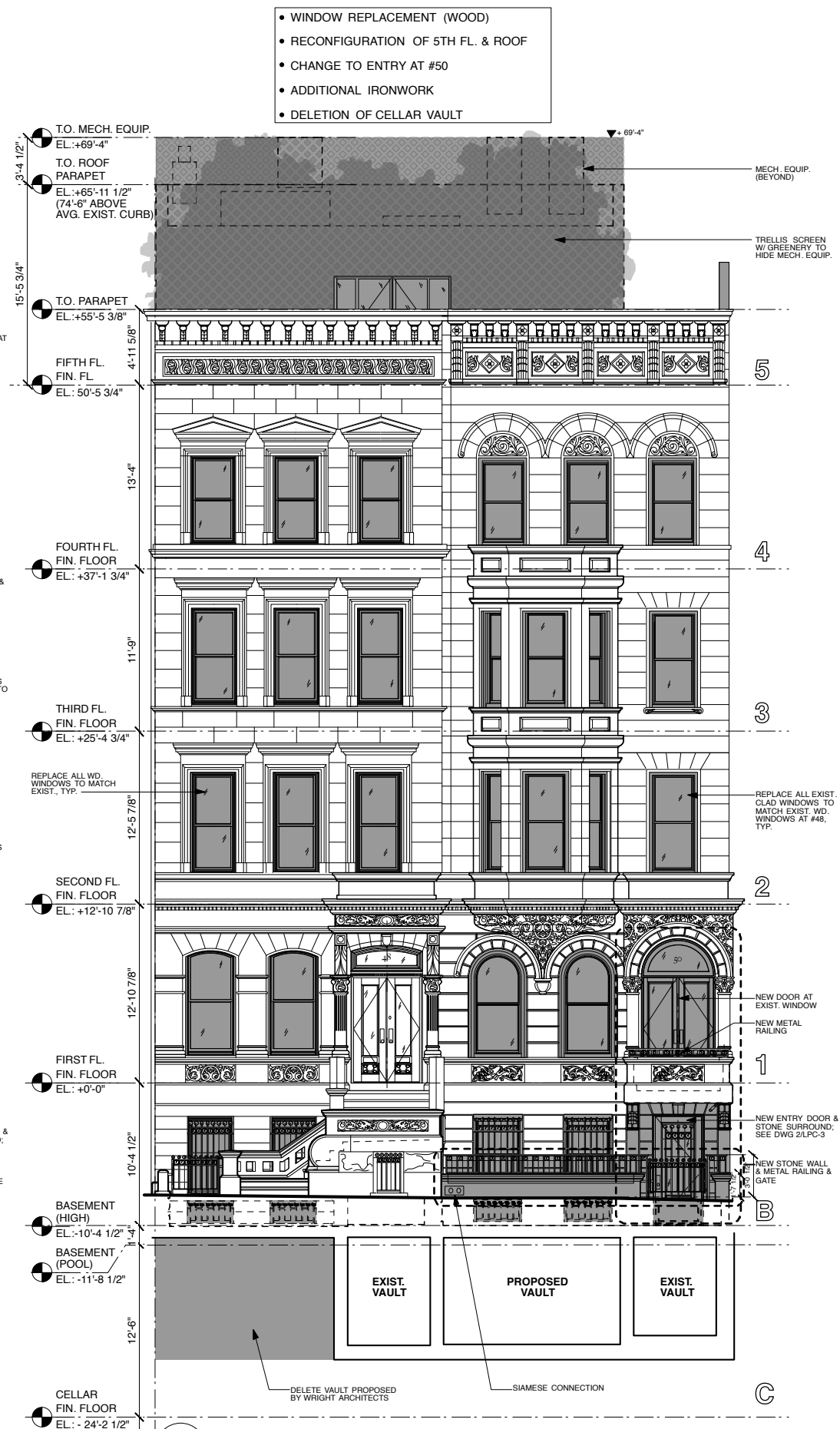
EXISTING REAR ELEVATION & CONTEXT



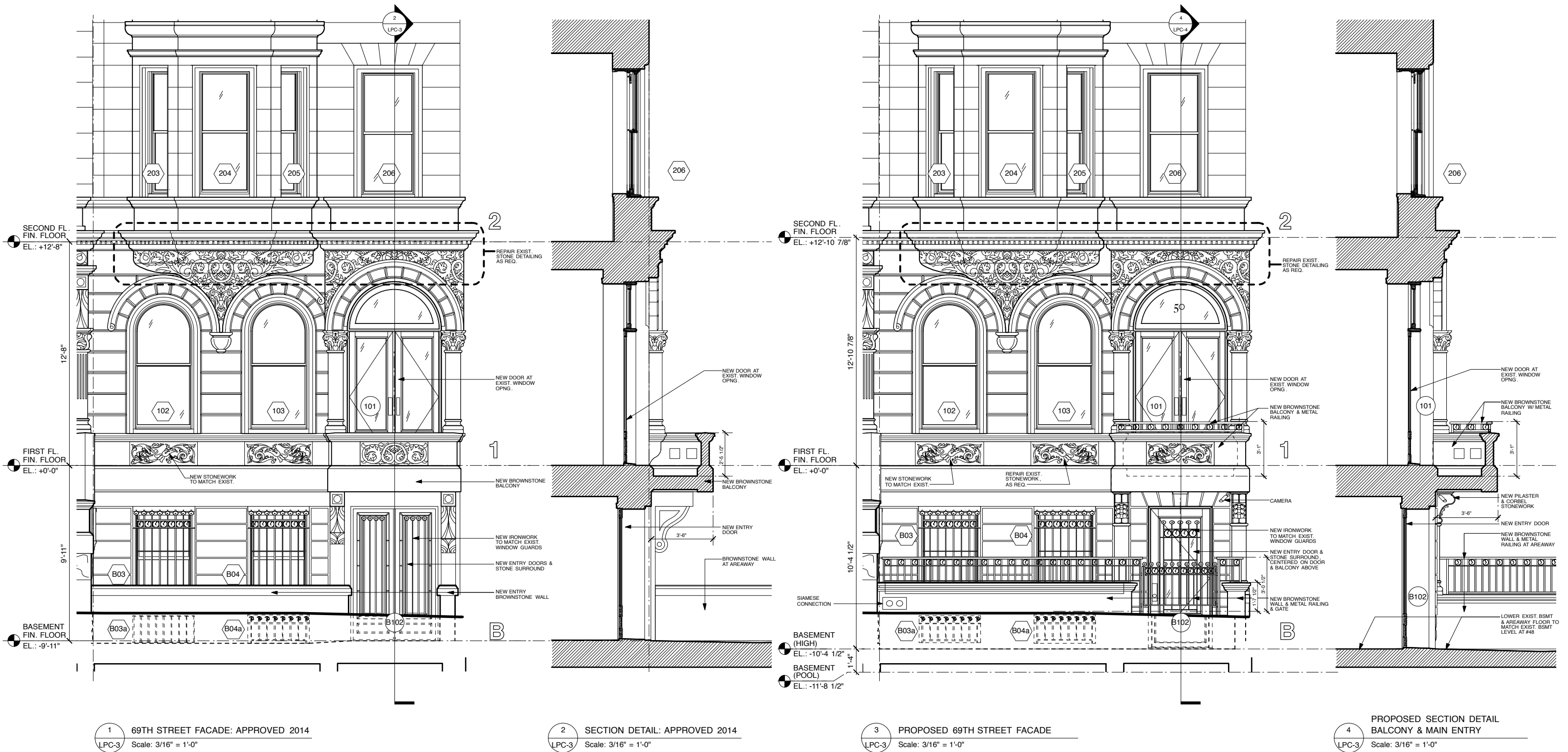
1 EXISTING NORTH ELEVATION
LPC-2 Scale: 3/32" = 1'-0"

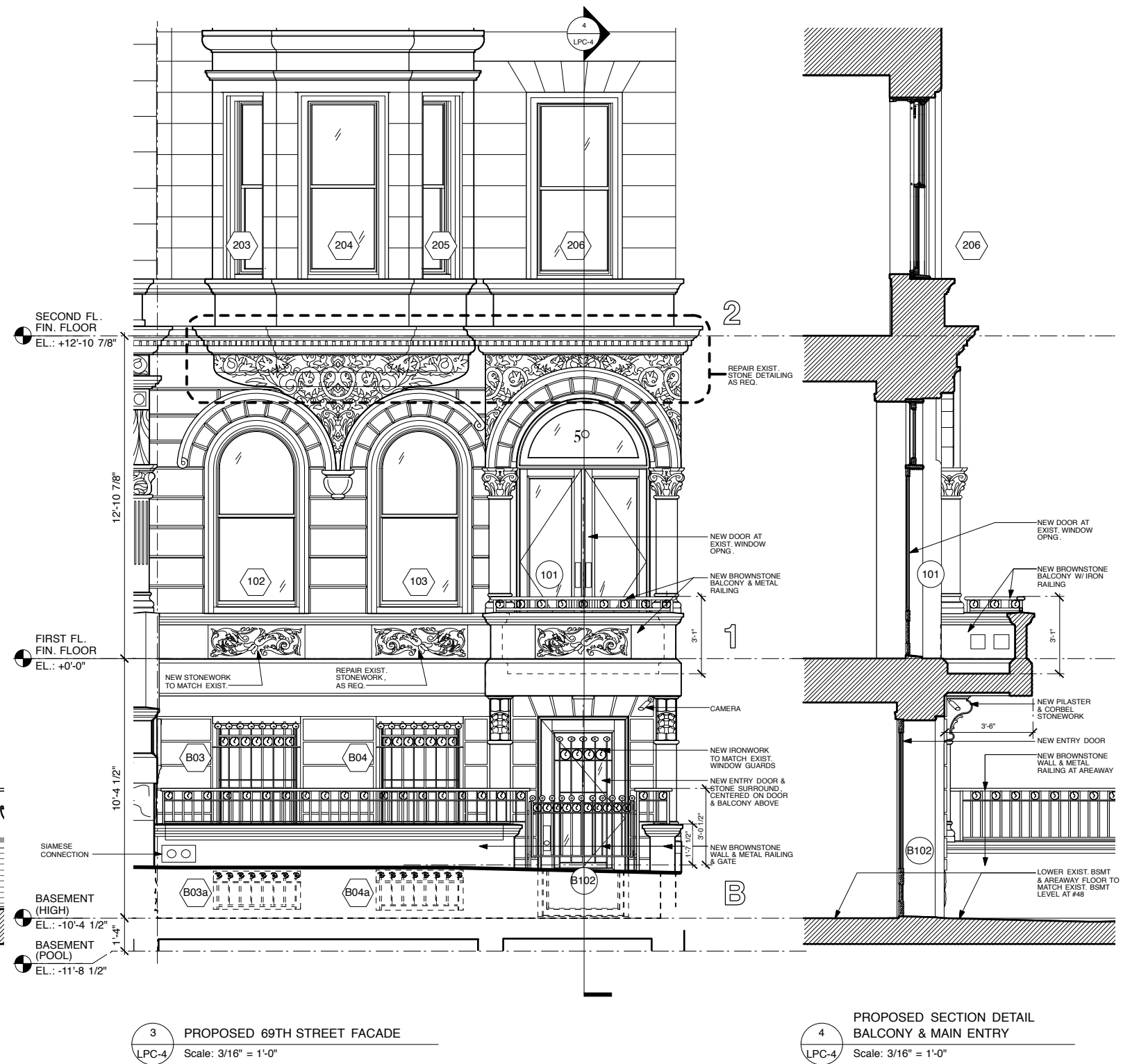
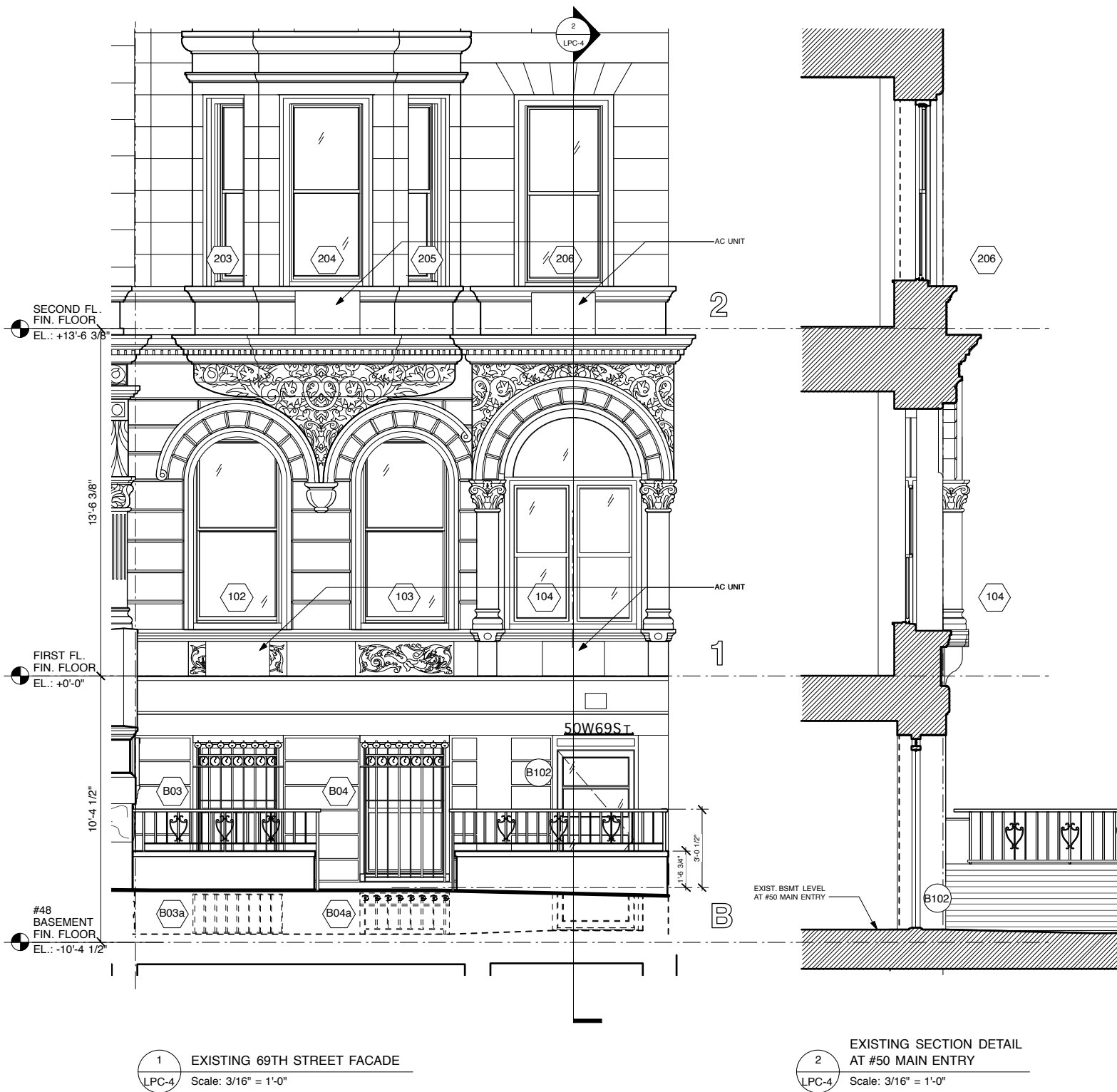


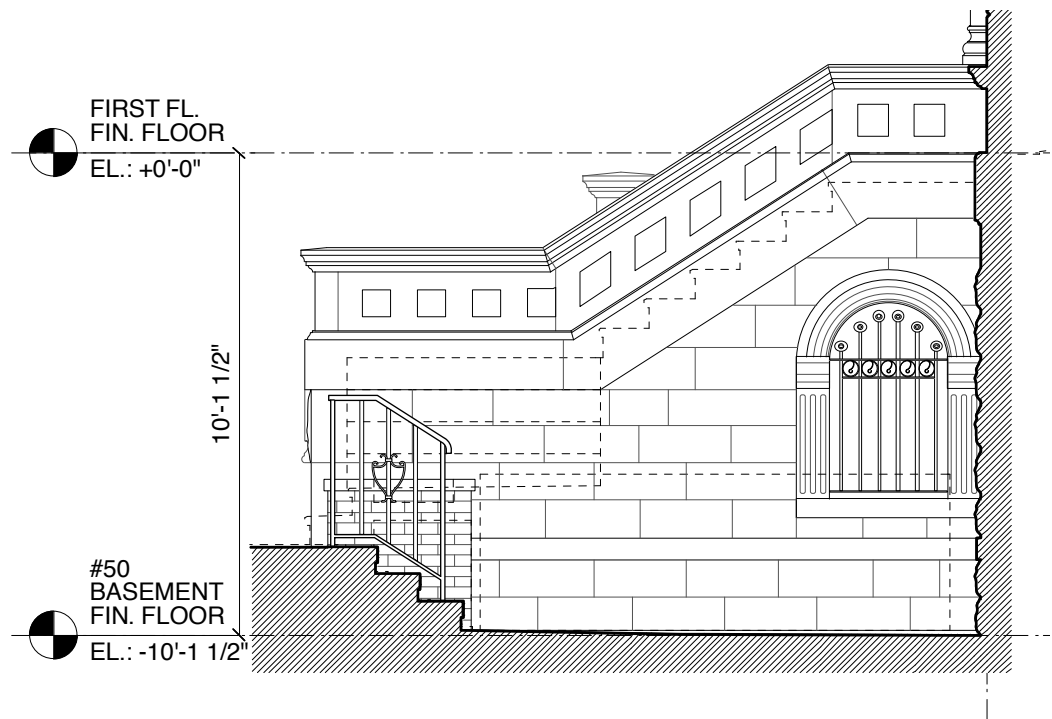
2 NORTH ELEVATION: APPROVED 2014 (WRIGHT ARCHITECTS)
LPC-2 Scale: 3/32" = 1'-0"



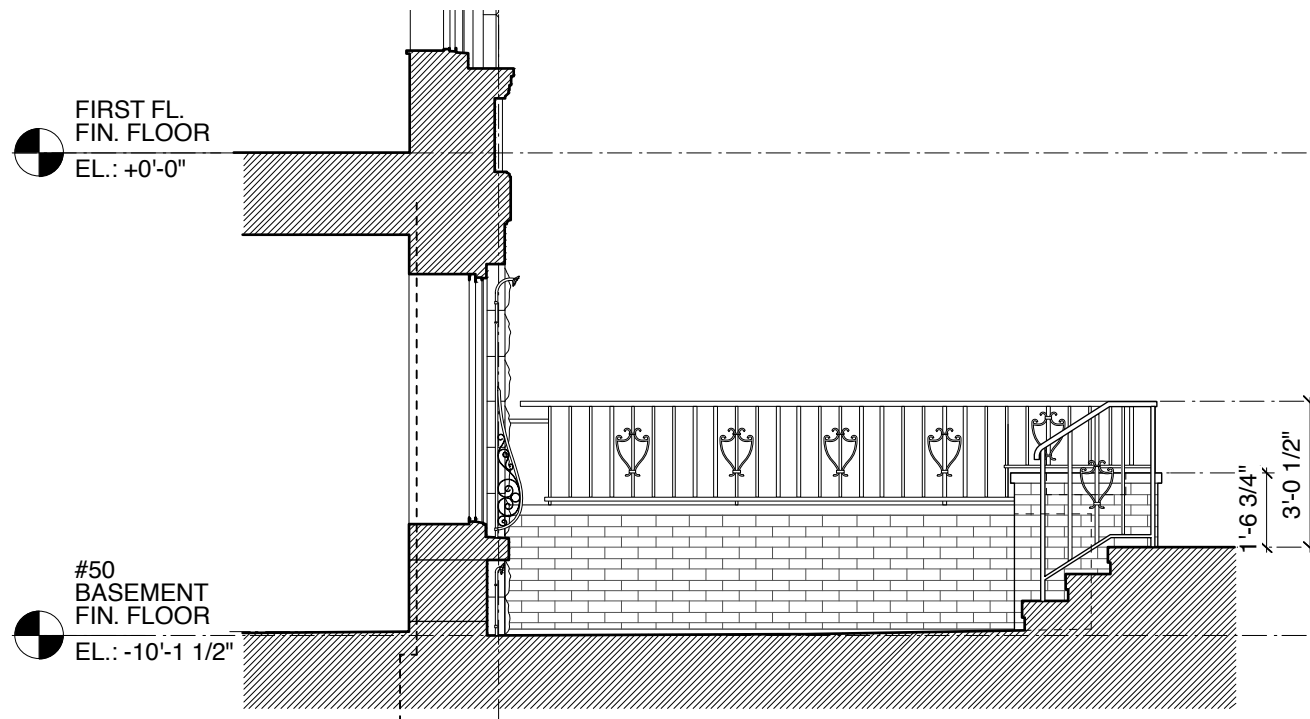
3 PROPOSED NORTH ELEVATION
LPC-2 Scale: 3/32" = 1'-0"



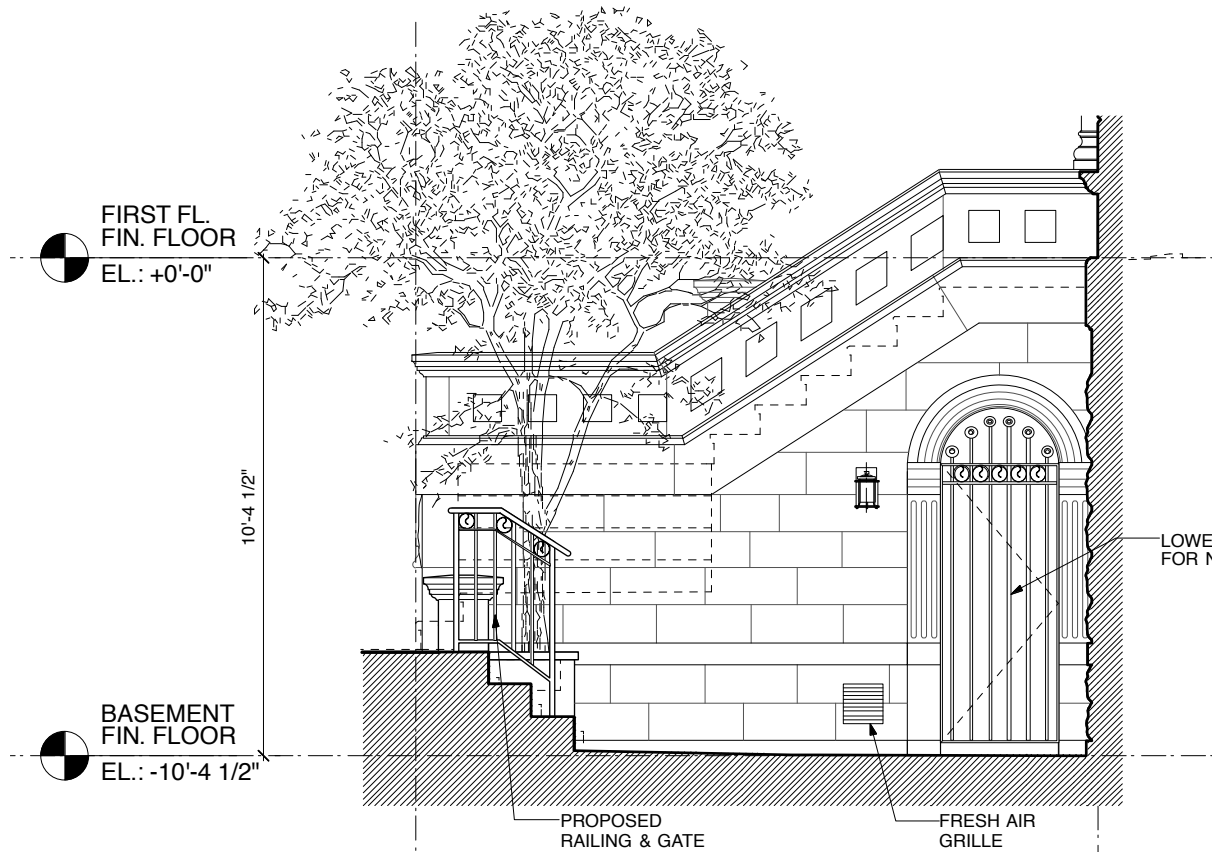
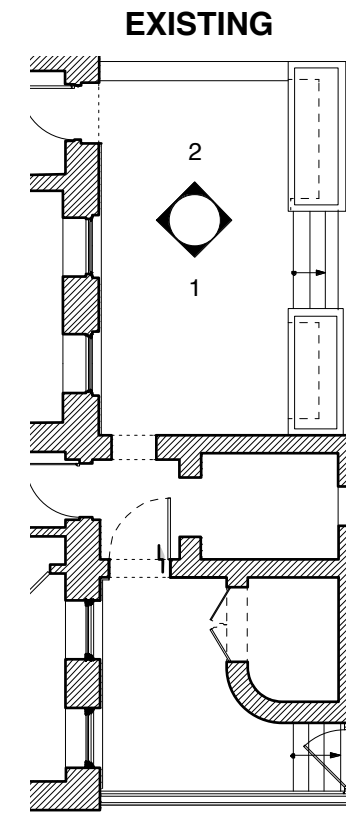




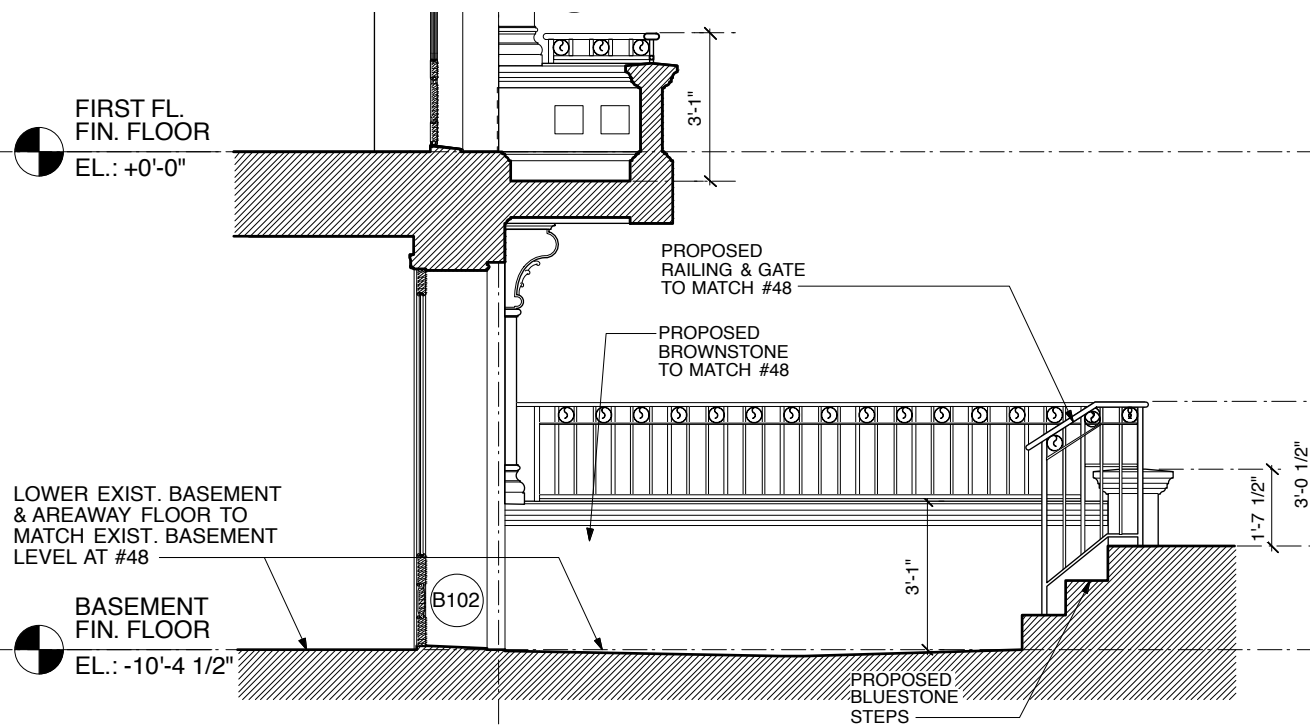
1 EXISTING AREAWAY FACING EAST
LPC-5 Scale: 1/4" = 1'-0"



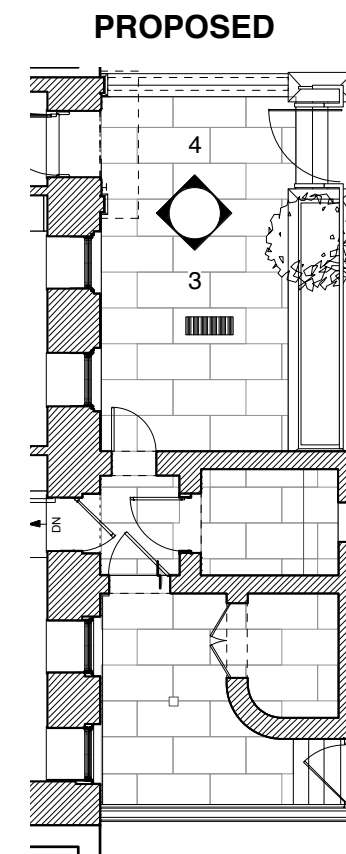
2 EXISTING AREAWAY FACING WEST
LPC-5 Scale: 1/4" = 1'-0"



3 PROPOSED AREAWAY FACING EAST
LPC-5 Scale: 1/4" = 1'-0"



4 PROPOSED AREAWAY FACING WEST
LPC-5 Scale: 1/4" = 1'-0"



EXISTING



1. EXISTING AREAWAY

APPROVED 2014



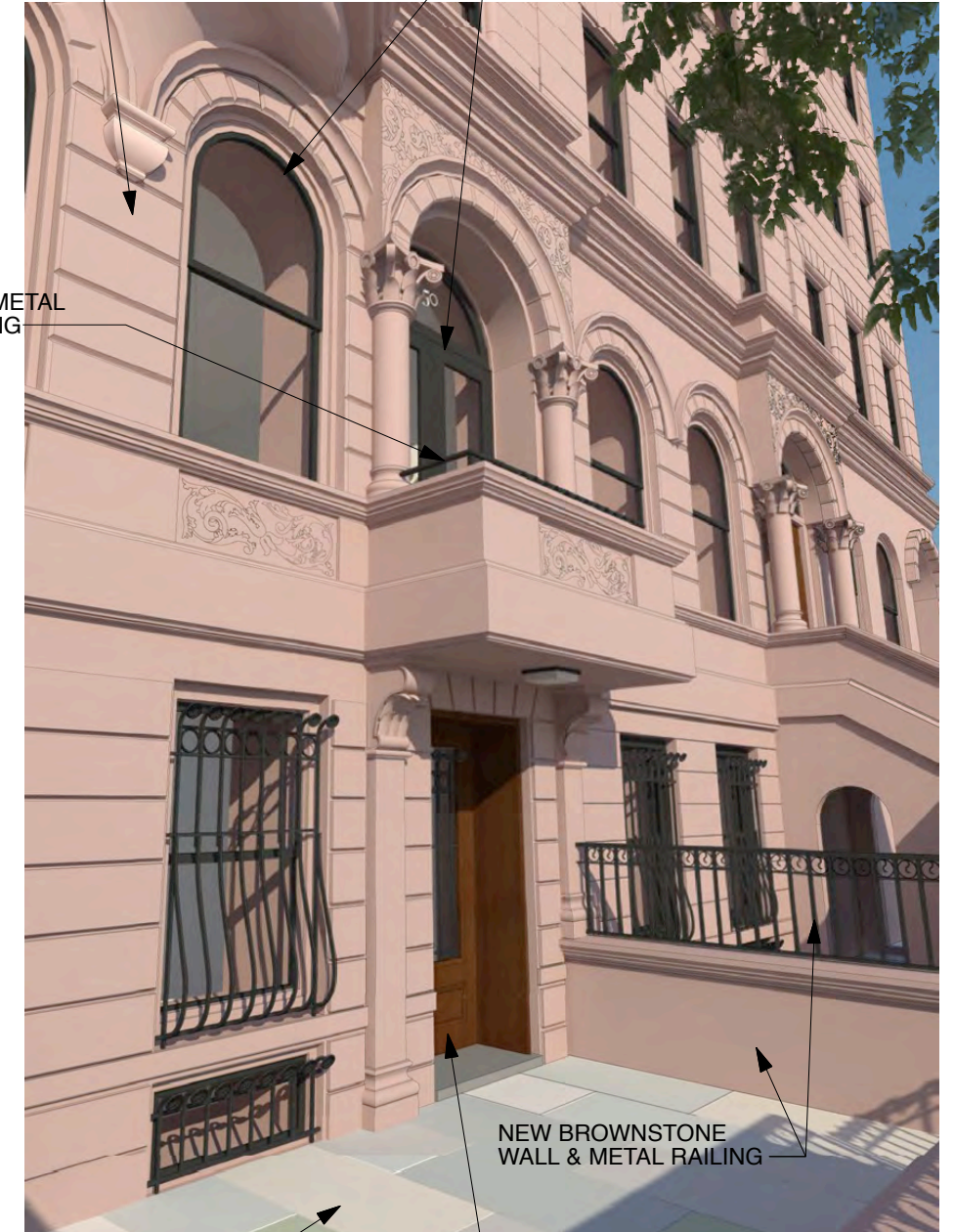
2. APPROVED 2014 AREAWAY
(WRIGHT ARCHITECTS)

PROPOSED

REMOVE PAINT & REPAIR
BROWNSTONE DETAILING
AS REQ.

NEW WD. WINDOWS &
DOORS TO MATCH EXIST.
AT #48, TYP.

NEW METAL
RAILING



BLUESTONE PAVERS AT
AREAWAY FLOOR

NEW BROWNSTONE
WALL & METAL RAILING

NEW DOOR &
STONE SURROUND
AT MAIN ENTRY

3. PROPOSED AREAWAY



AERIAL AXON: APPROVED 2014



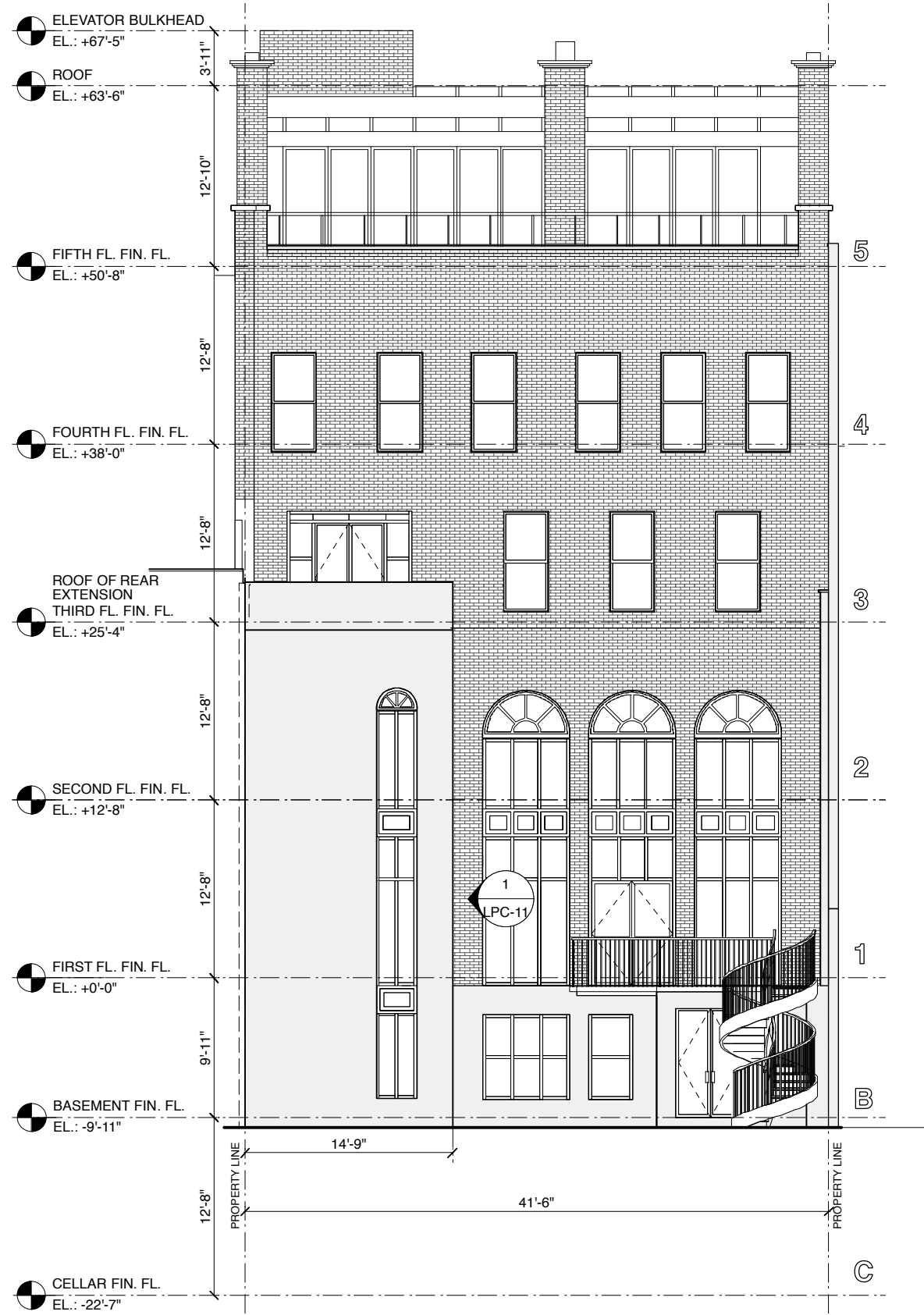
AERIAL AXON: PROPOSED



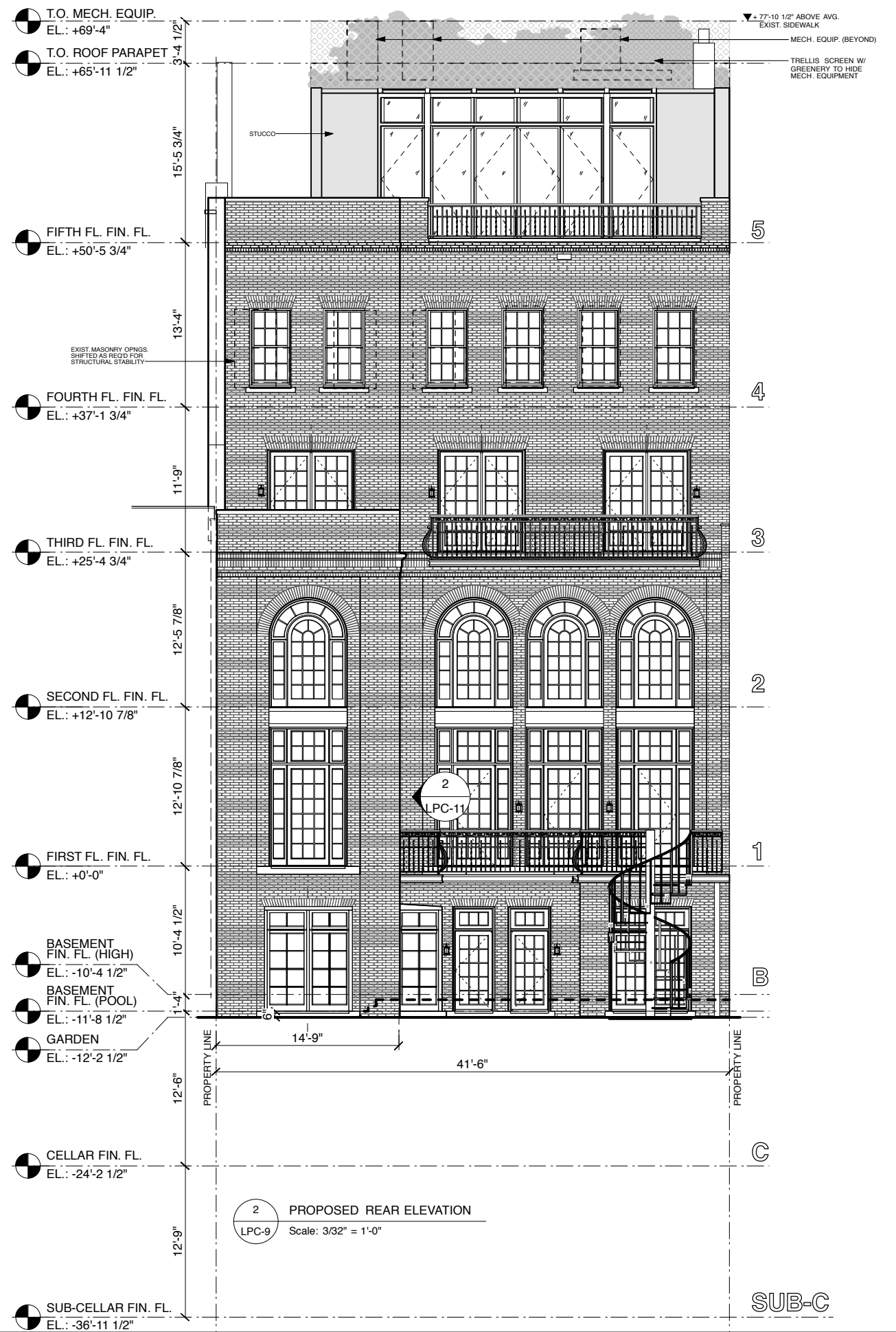
AERIAL AXON: EXISTING



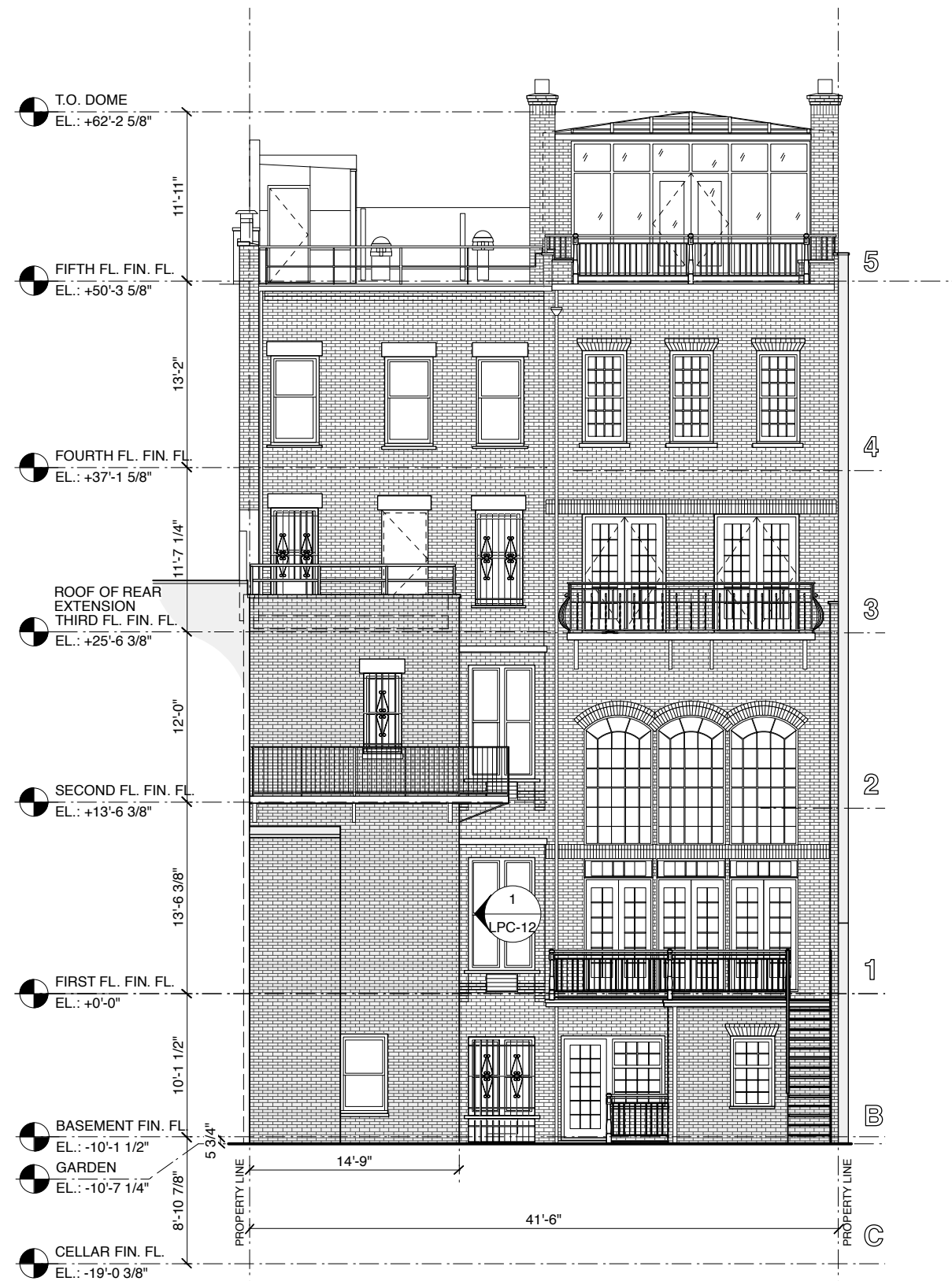
AERIAL AXON: PROPOSED



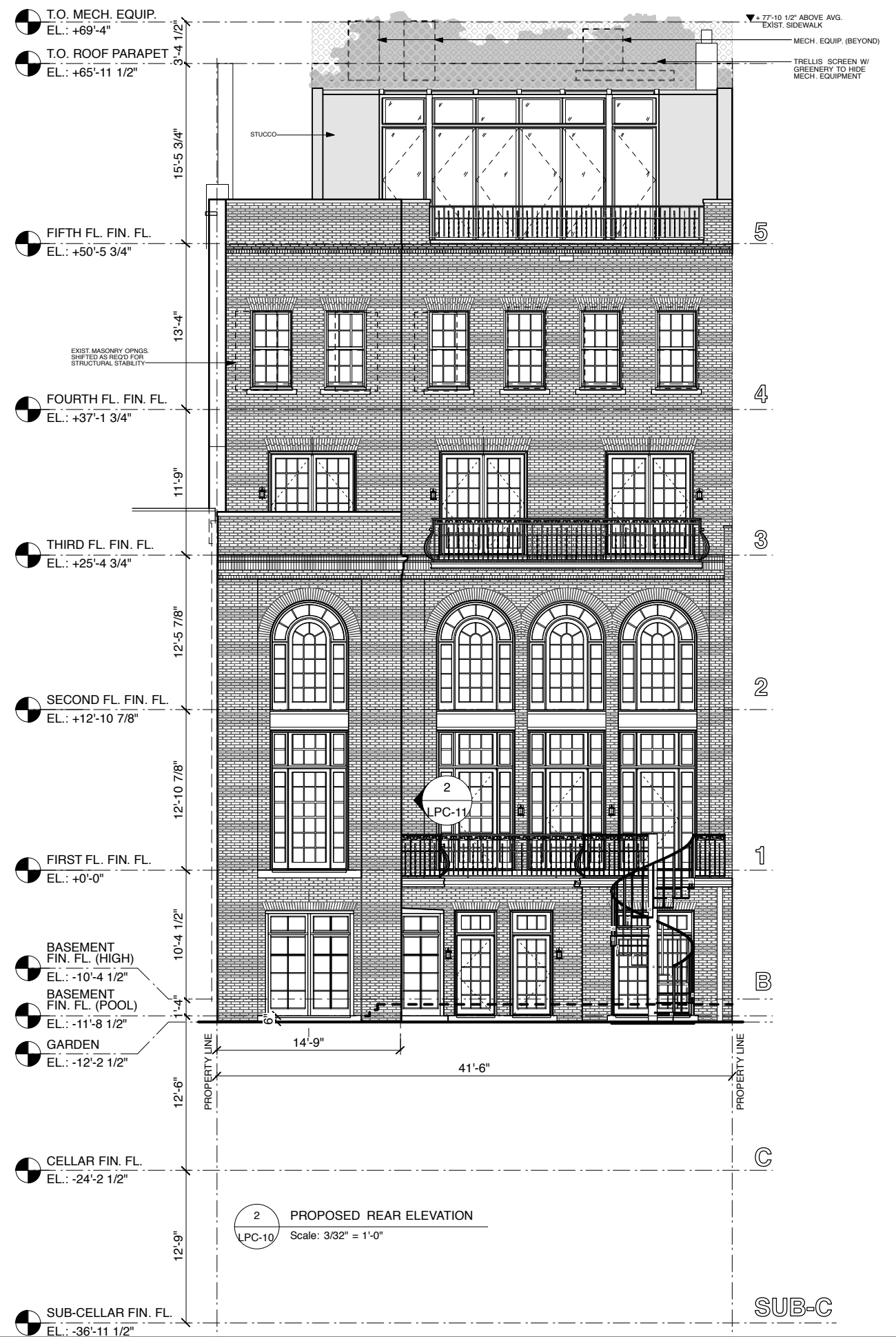
1 REAR ELEVATION: APPROVED 2014 (WRIGHT ARCHITECTS)
LPC-9 Scale: 3/32" = 1'-0"



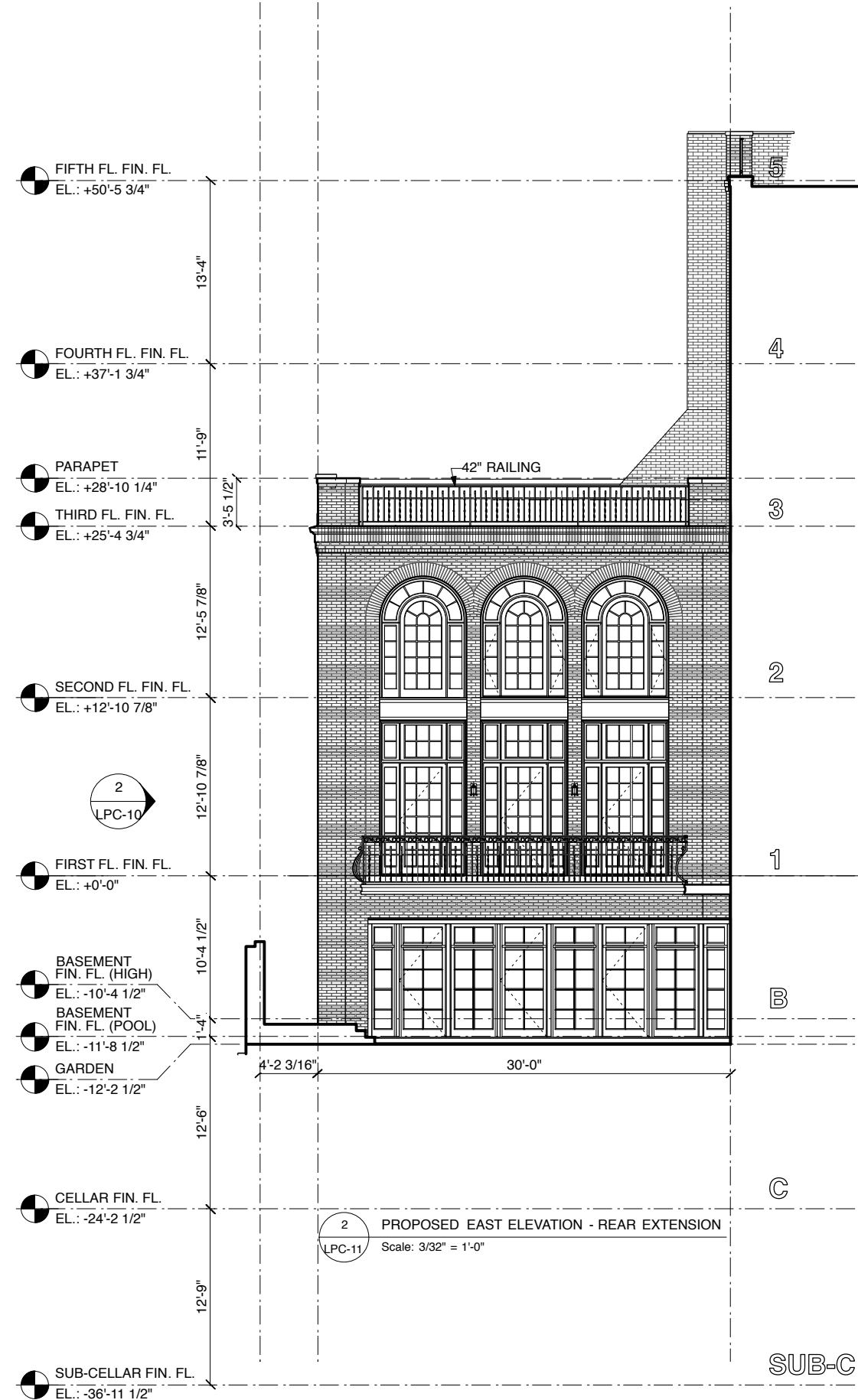
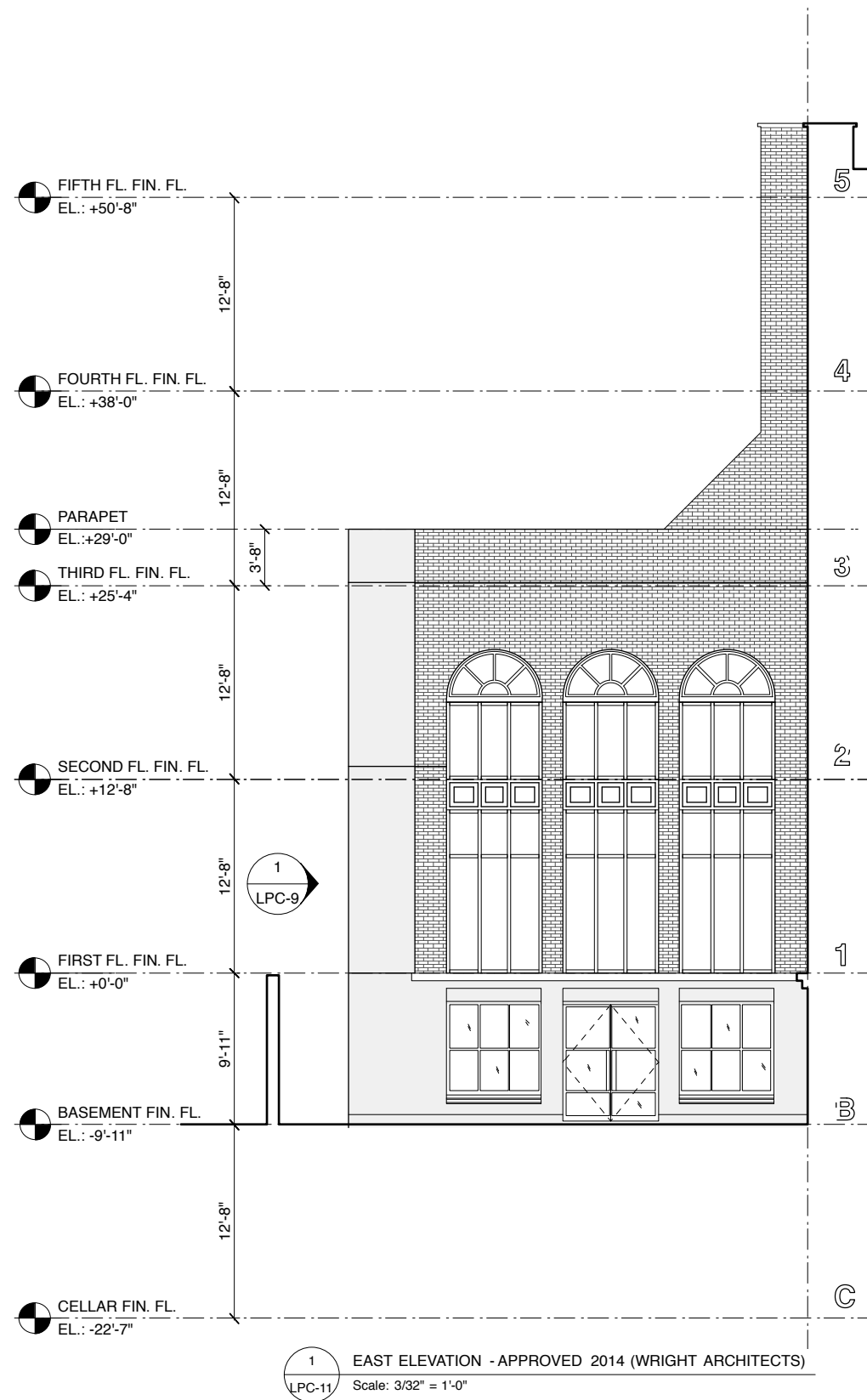
2 PROPOSED REAR ELEVATION
LPC-9 Scale: 3/32" = 1'-0"

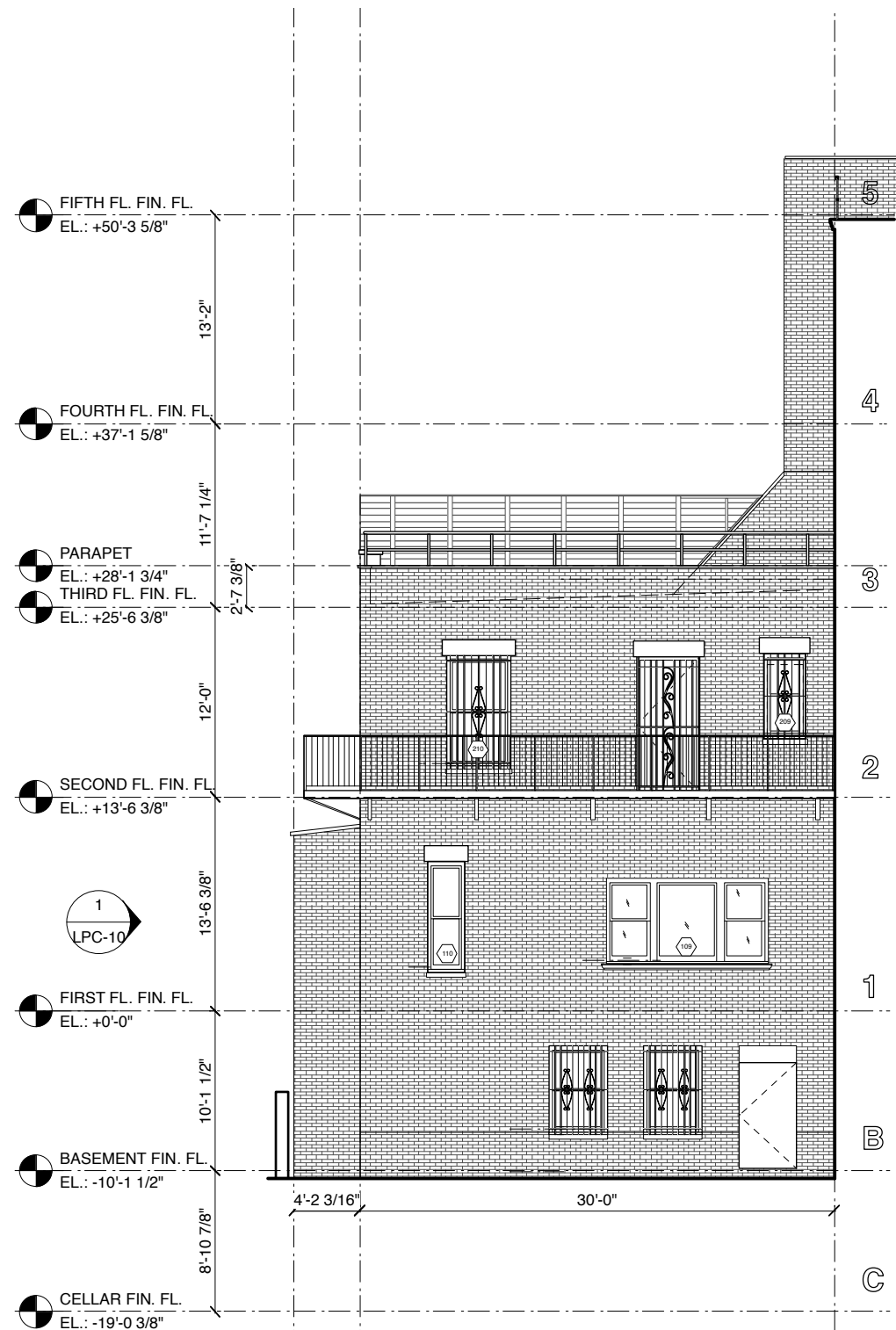


1 EXISTING REAR ELEVATION
LPC-10 Scale: 3/32" = 1'-0"

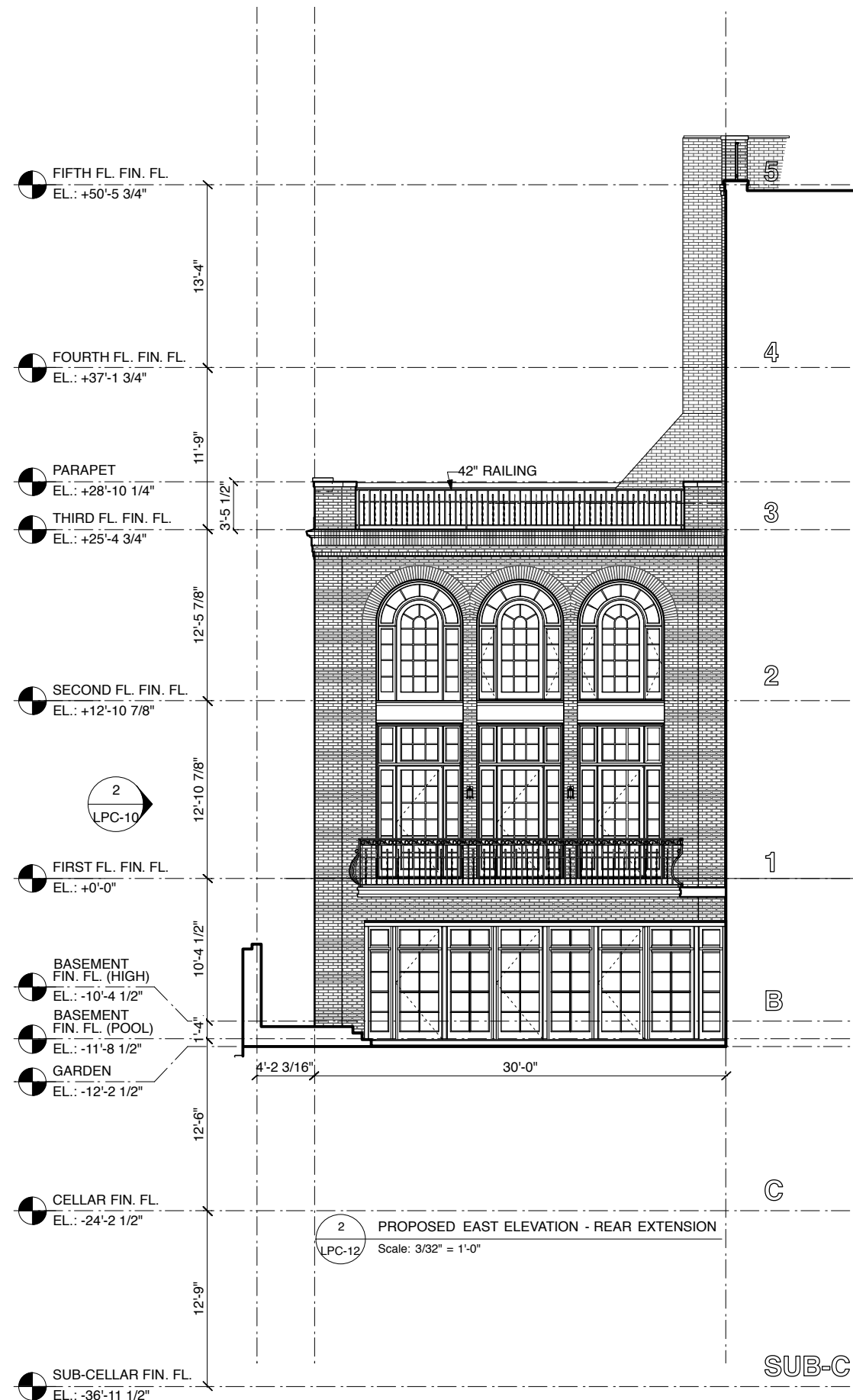


2 PROPOSED REAR ELEVATION
LPC-10 Scale: 3/32" = 1'-0"

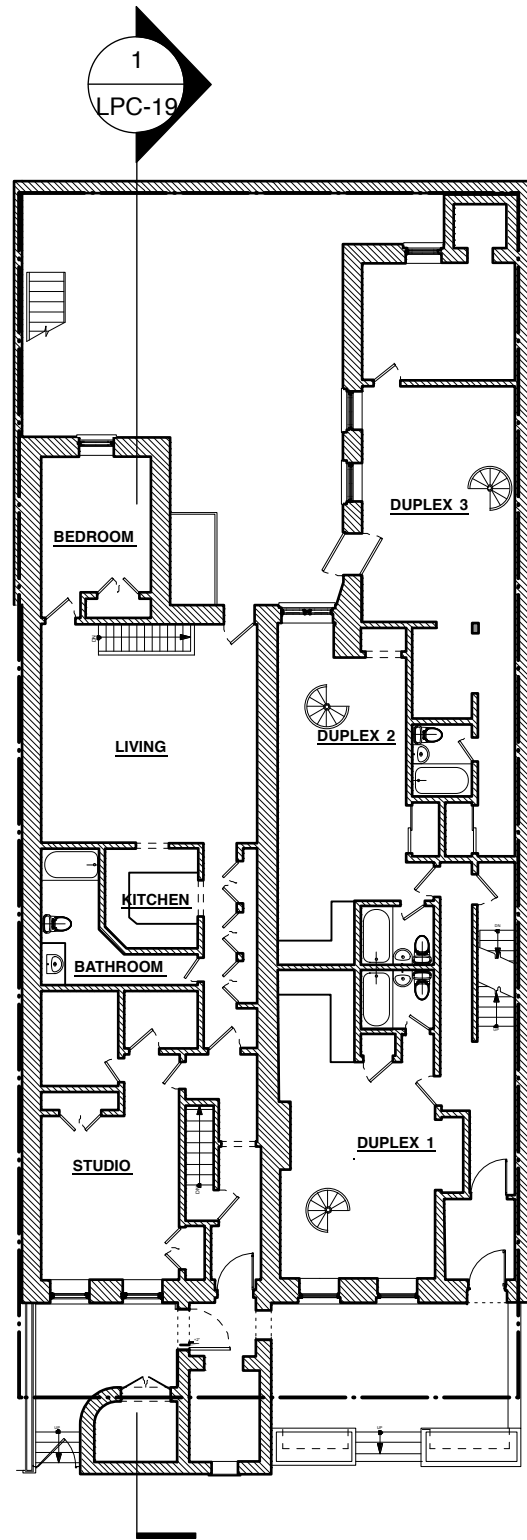




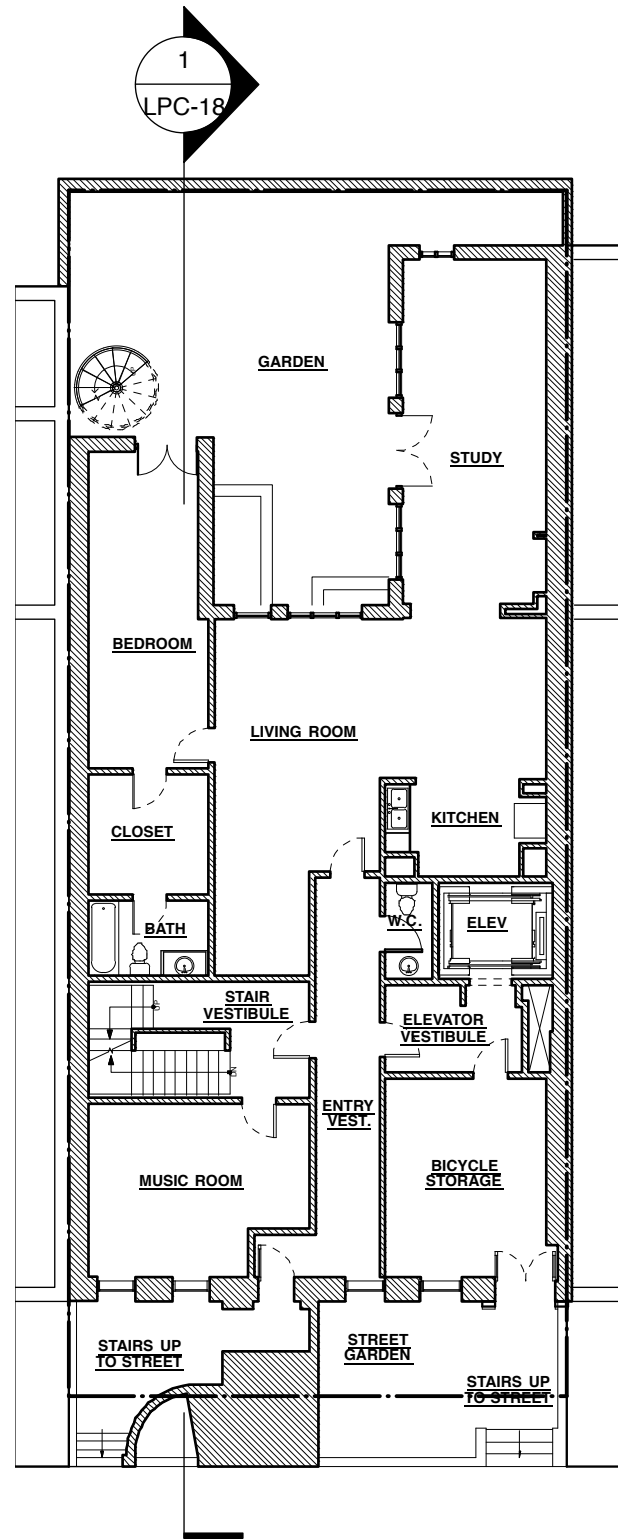
1 EXISTING EAST ELEVATION - REAR EXTENSION
LPC-12 Scale: 3/32" = 1'-0"



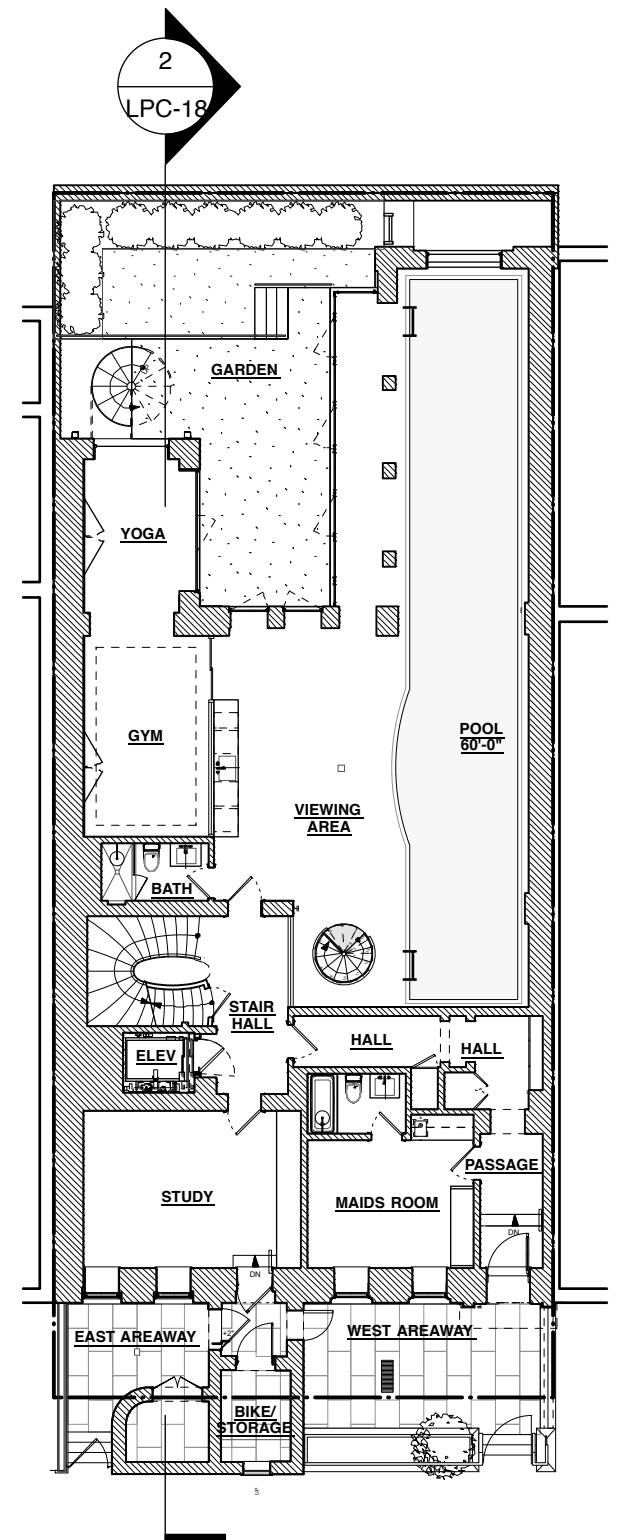
2 PROPOSED EAST ELEVATION - REAR EXTENSION
LPC-12 Scale: 3/32" = 1'-0"



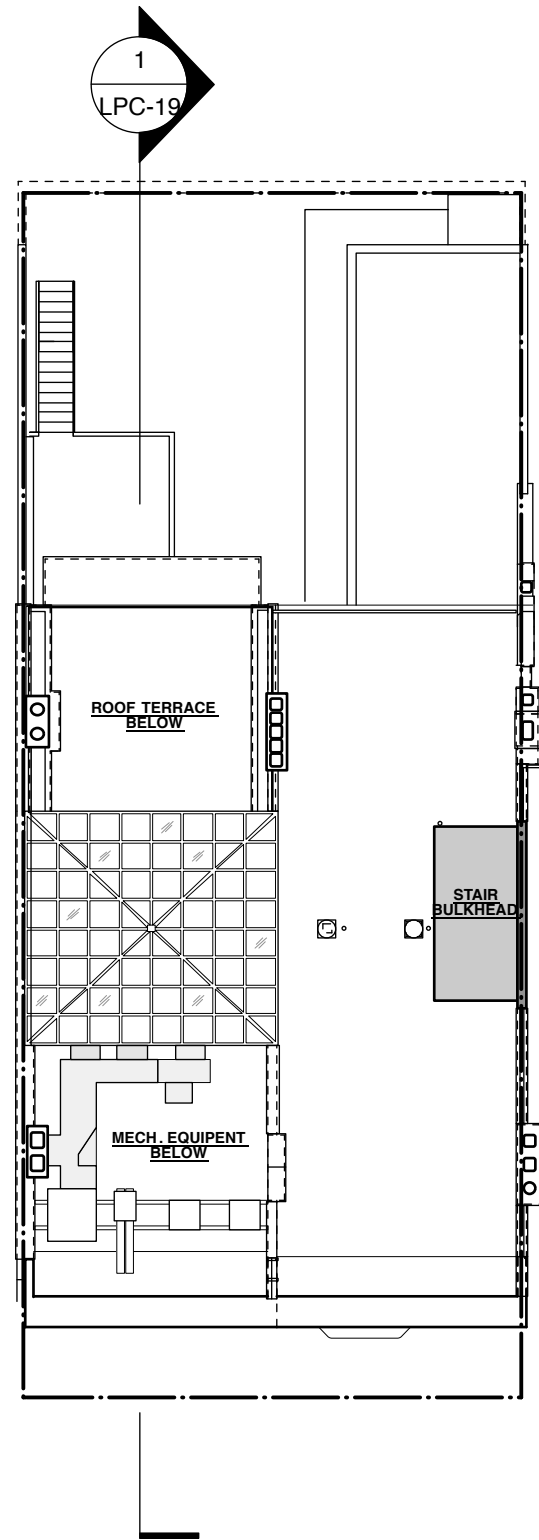
1 BASEMENT PLAN - EXISTING
LPC-13 Scale: 1/16" = 1'-0"



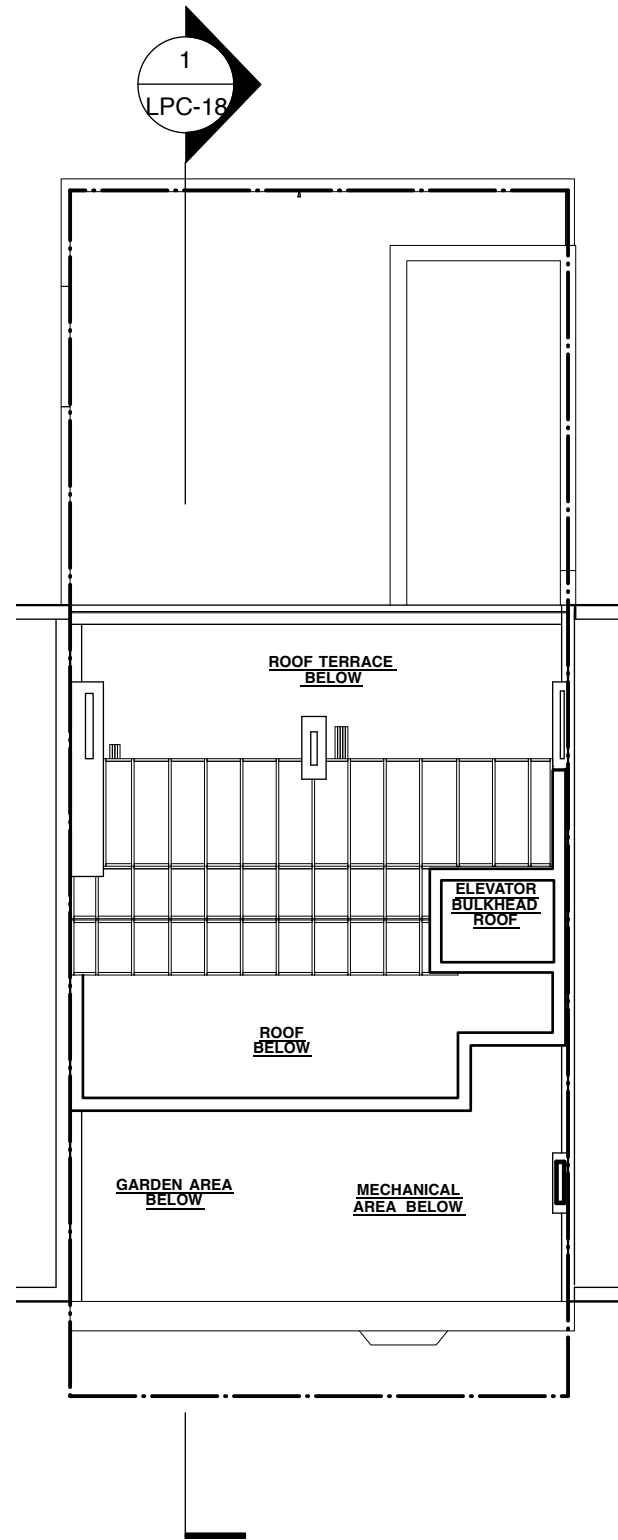
2 BASEMENT PLAN - APPROVED 2014 (WRIGHT ARCHITECTS)
LPC-13 Scale: 1/16" = 1'-0"



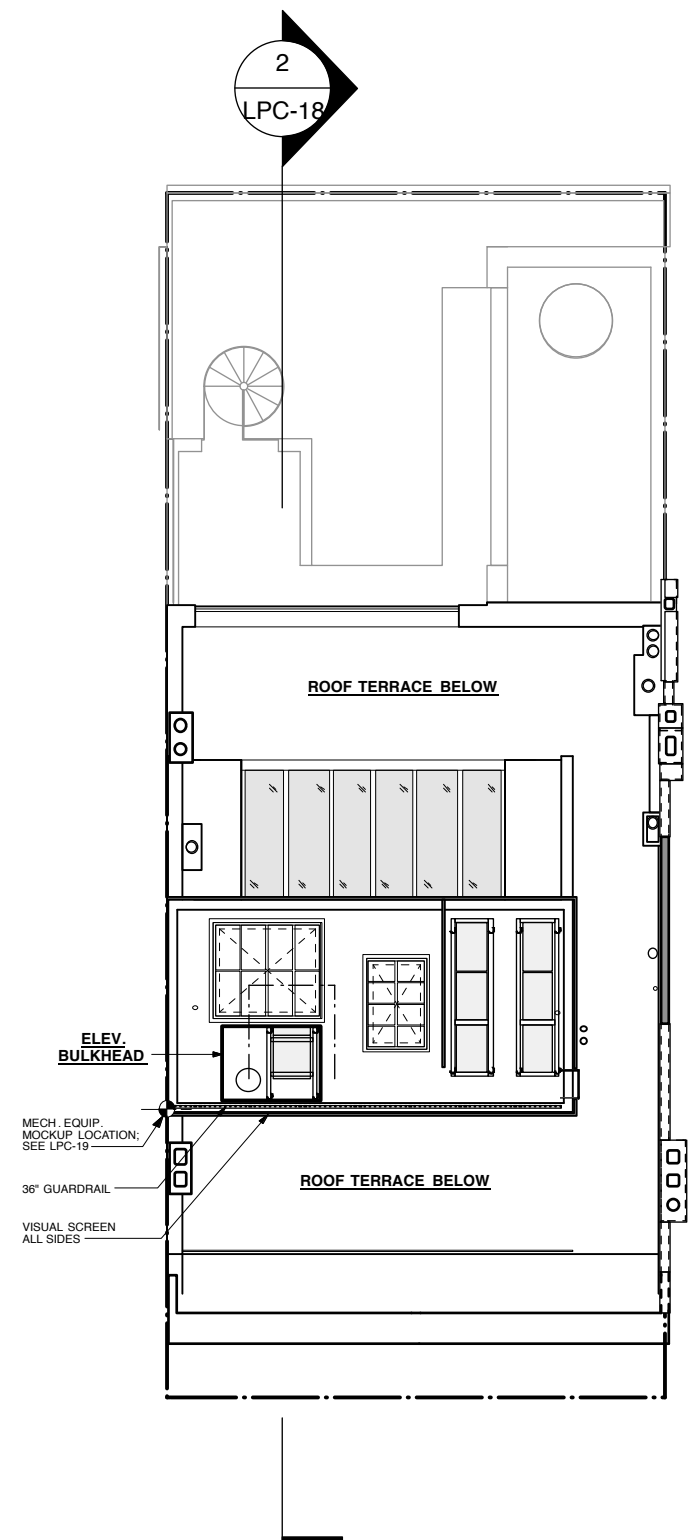
3 BASEMENT PLAN - PROPOSED
LPC-13 Scale: 1/16" = 1'-0"



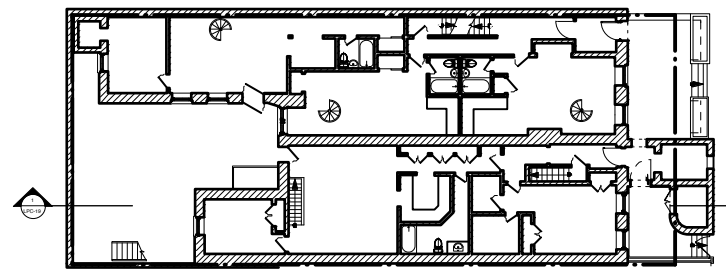
1 ROOF PLAN - EXISTING
LPC-14 Scale: 1/16" = 1'-0"



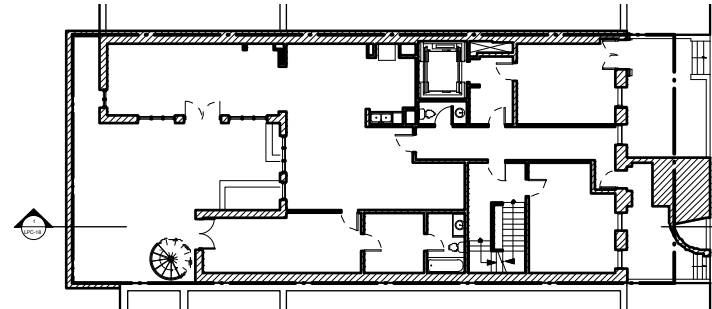
2 ROOF PLAN - APPROVED 2014 (WRIGHT ARCHITECTS)
LPC-14 Scale: 1/16" = 1'-0"



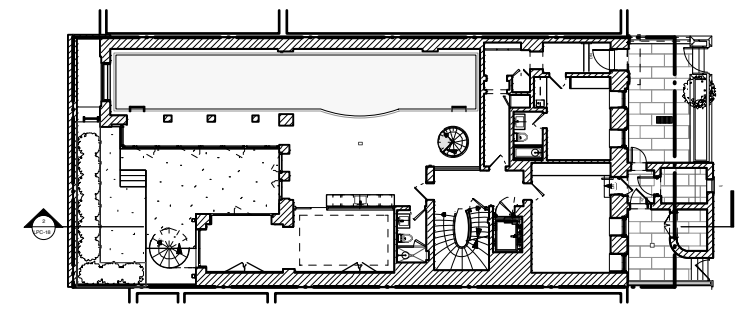
3 ROOF PLAN - PROPOSED
LPC-14 Scale: 1/16" = 1'-0"



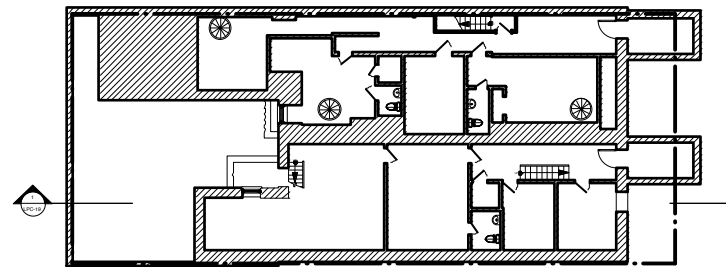
3 BASEMENT PLAN - EXISTING
LPC-15 Scale: 1/32" = 1'-0"



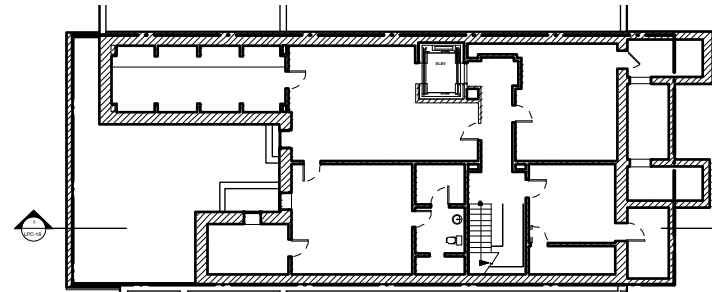
6 BASEMENT PLAN APPROVED 2014 (WRIGHT ARCHITECTS)
LPC-15 Scale: 1/32" = 1'-0"



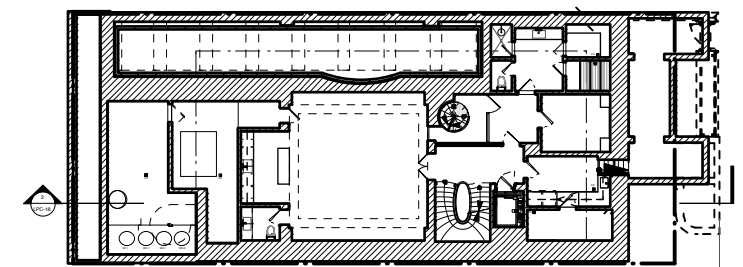
9 BASEMENT PLAN - PROPOSED
LPC-15 Scale: 1/32" = 1'-0"



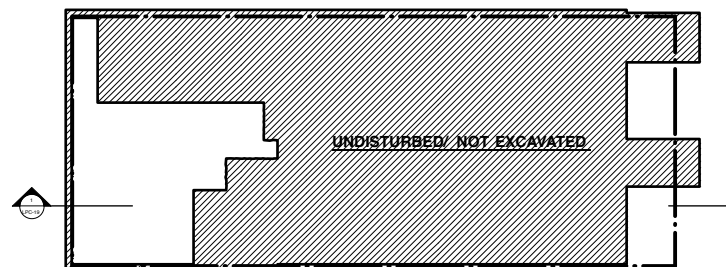
2 CELLAR PLAN - EXISTING
LPC-15 Scale: 1/32" = 1'-0"



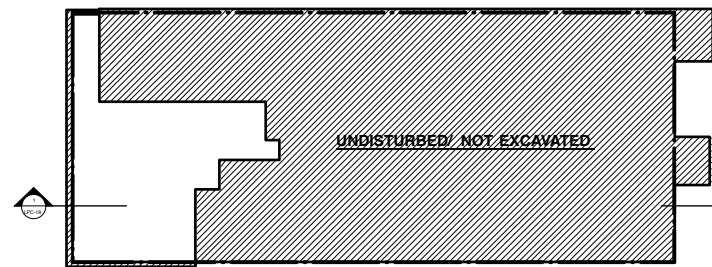
5 CELLAR PLAN APPROVED 2014 (WRIGHT ARCHITECTS)
LPC-15 Scale: 1/32" = 1'-0"



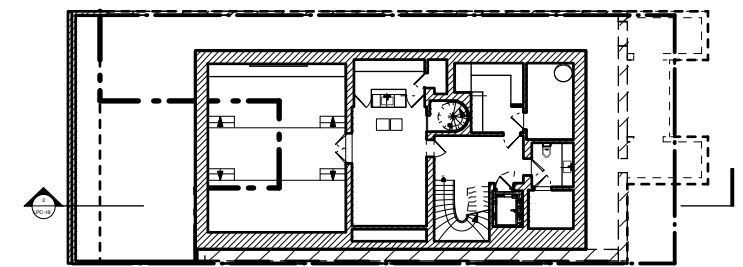
8 CELLAR PLAN - PROPOSED
LPC-15 Scale: 1/32" = 1'-0"



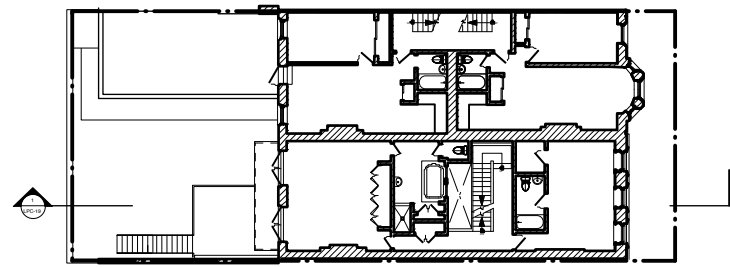
1 SUB-CELLAR PLAN - EXISTING
LPC-15 Scale: 1/32" = 1'-0"



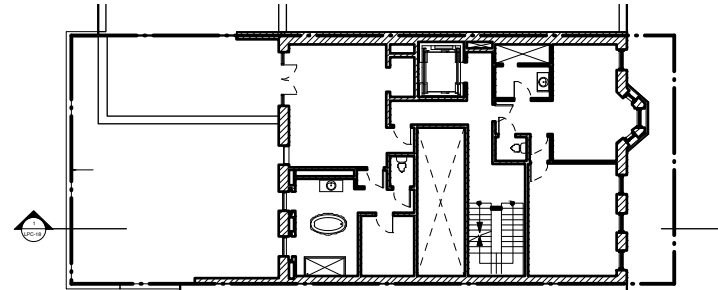
4 SUB CELLAR PLAN APPROVED 2014 (WRIGHT ARCHITECTS)
LPC-15 Scale: 1/32" = 1'-0"



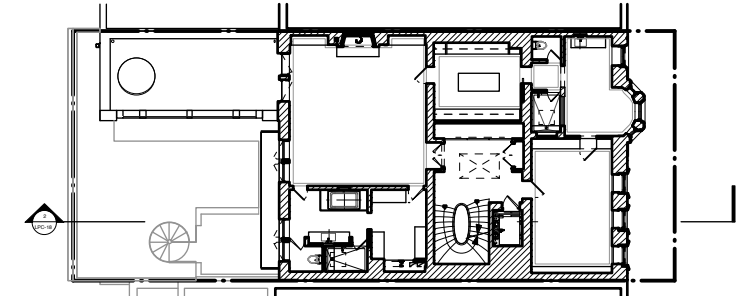
7 SUB-CELLAR PLAN - PROPOSED
LPC-15 Scale: 1/32" = 1'-0"



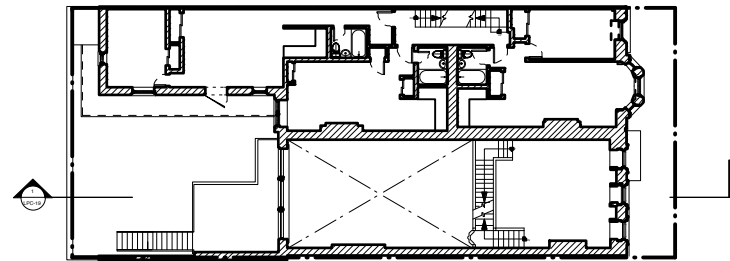
3 THIRD FLOOR PLAN - EXISTING
LPC-16 Scale: 1/32" = 1'-0"



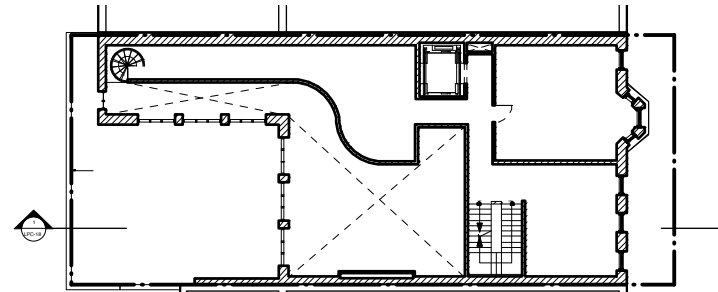
6 THIRD FLOOR PLAN - APPROVED 2014 (WRIGHT ARCHITECTS)
LPC-16 Scale: 1/32" = 1'-0"



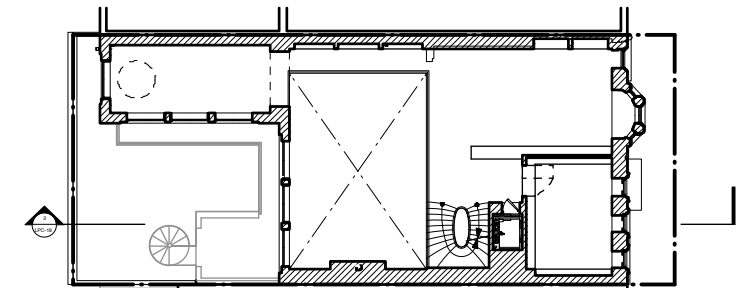
9 THIRD FLOOR PLAN - PROPOSED
LPC-16 Scale: 1/32" = 1'-0"



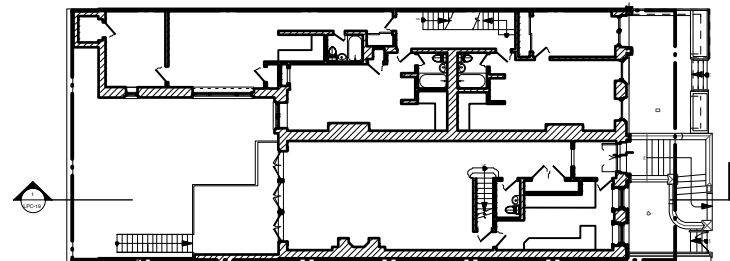
2 SECOND FLOOR PLAN - EXISTING
LPC-16 Scale: 1/32" = 1'-0"



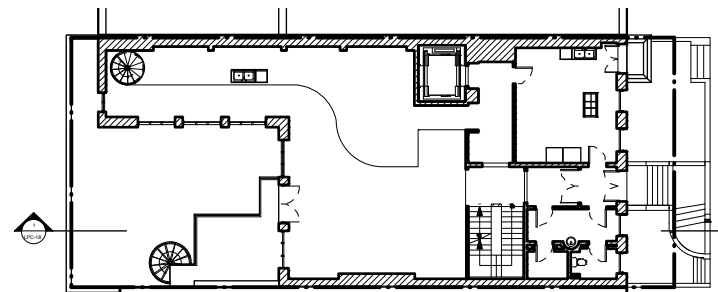
5 SECOND FLOOR PLAN - APPROVED 2014 (WRIGHT ARCHITECTS)
LPC-16 Scale: 1/32" = 1'-0"



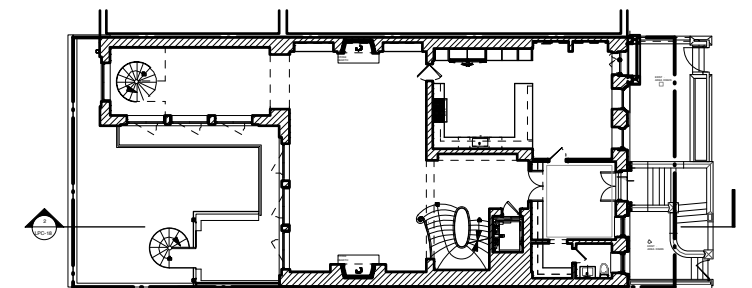
8 SECOND FLOOR PLAN - PROPOSED
LPC-16 Scale: 1/32" = 1'-0"



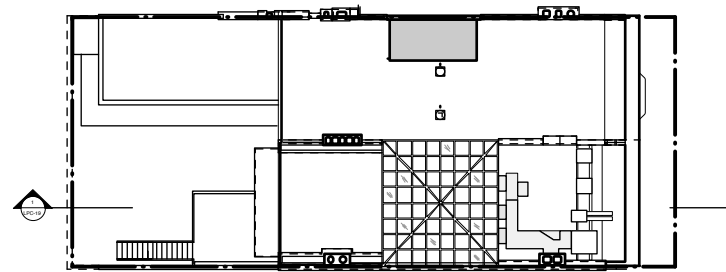
1 FIRST FLOOR PLAN - EXISTING
LPC-16 Scale: 1/32" = 1'-0"



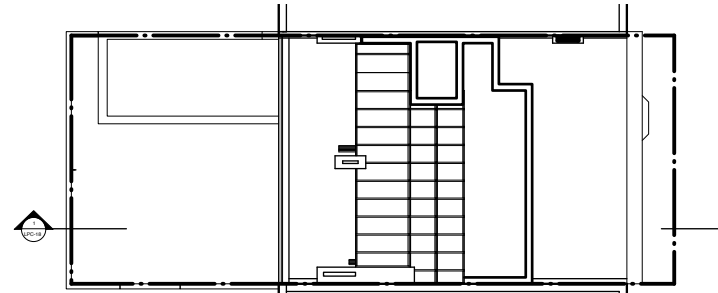
4 FIRST FLOOR PLAN - APPROVED 2014 (WRIGHT ARCHITECTS)
LPC-16 Scale: 1/32" = 1'-0"



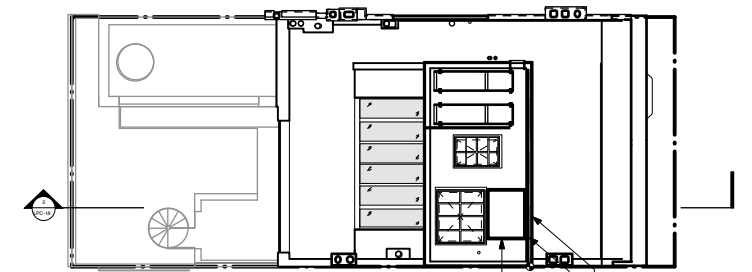
7 FIRST FLOOR PLAN - PROPOSED
LPC-16 Scale: 1/32" = 1'-0"



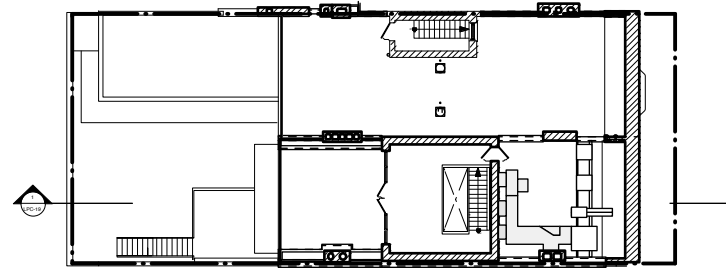
3 ROOF PLAN - EXISTING
LPC-17 Scale: 1/32" = 1'-0"



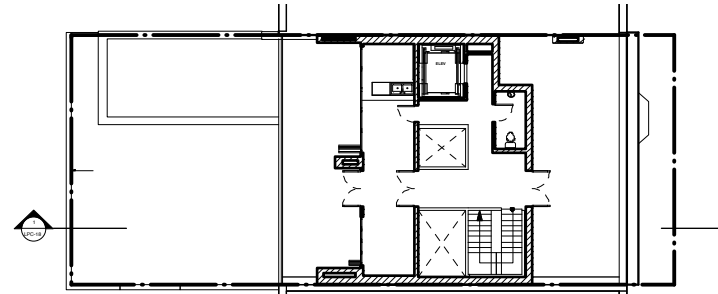
6 ROOF PLAN - APPROVED 2014 (WRIGHT ARCHITECTS)
LPC-17 Scale: 1/32" = 1'-0"



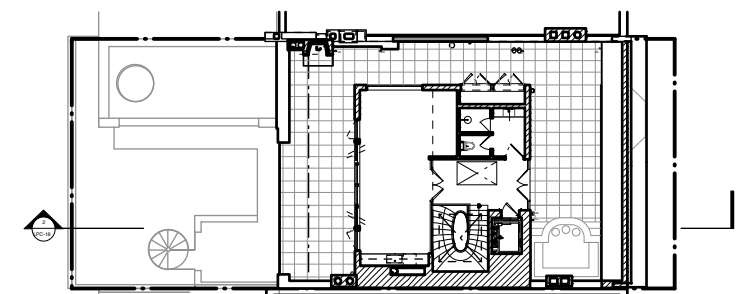
9 ROOF PLAN - PROPOSED
LPC-17 Scale: 1/32" = 1'-0"



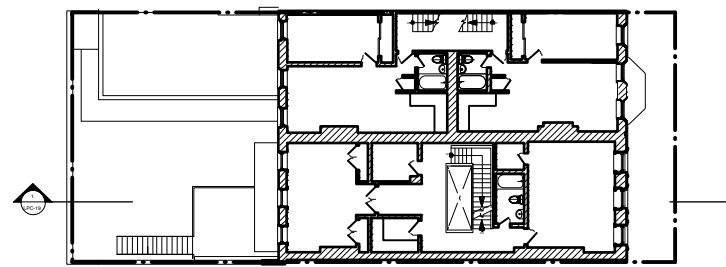
2 FIFTH FLOOR PLAN - EXISTING
LPC-17 Scale: 1/32" = 1'-0"



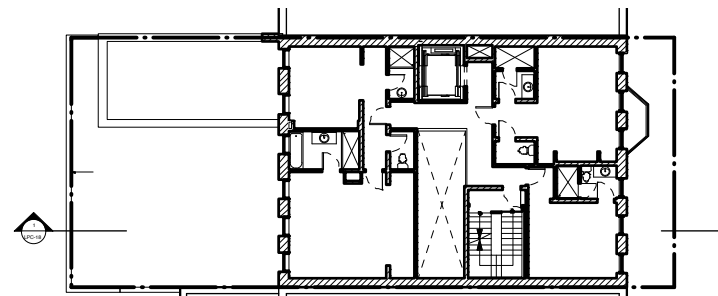
5 FIFTH FLOOR PLAN - APPROVED 2014 (WRIGHT ARCHITECTS)
LPC-17 Scale: 1/32" = 1'-0"



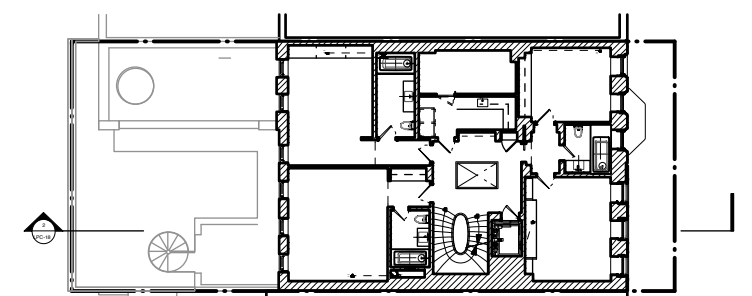
8 FIFTH FLOOR PLAN - PROPOSED
LPC-17 Scale: 1/32" = 1'-0"



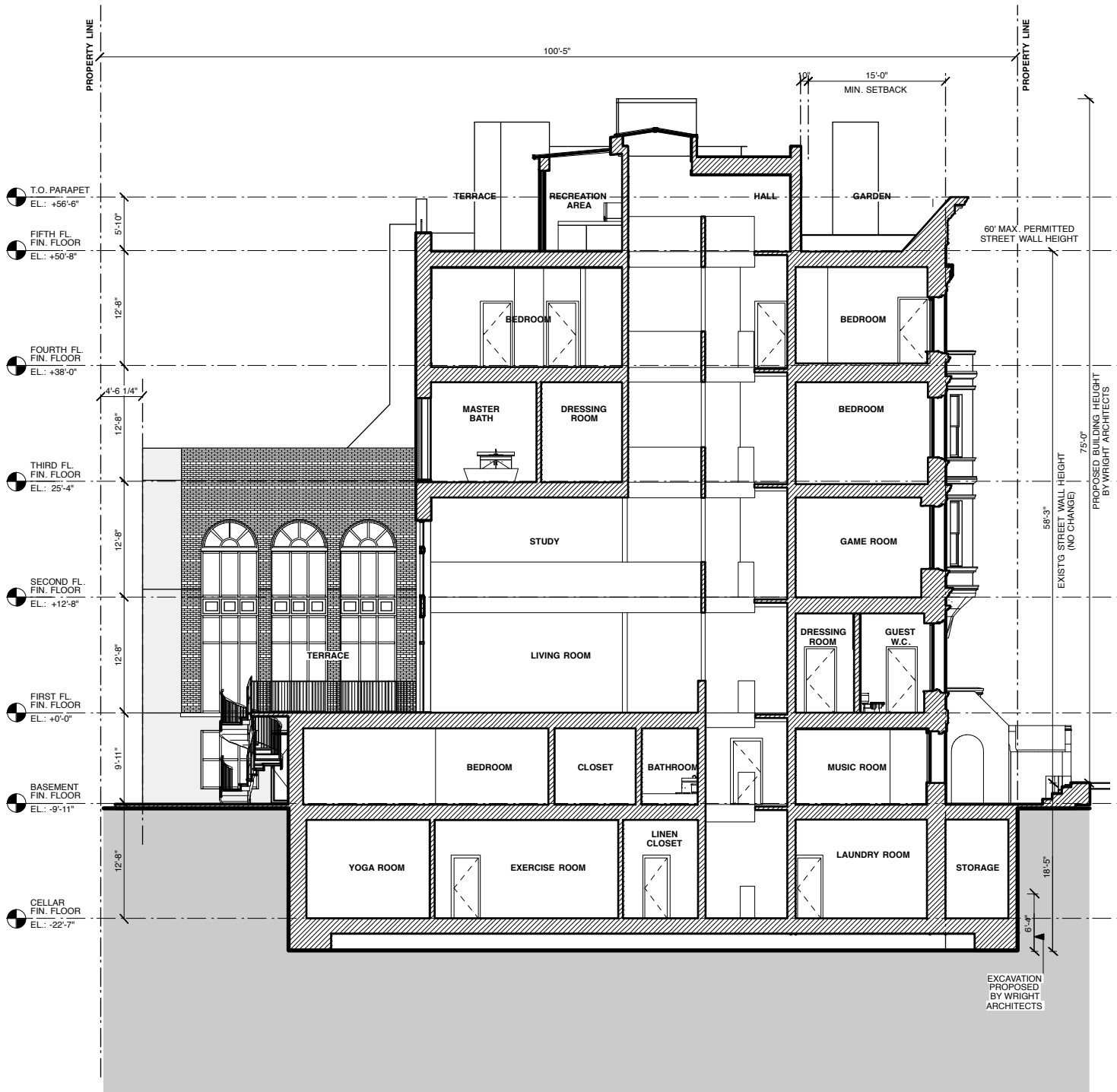
1 FOURTH FLOOR PLAN - EXISTING
LPC-17 Scale: 1/32" = 1'-0"



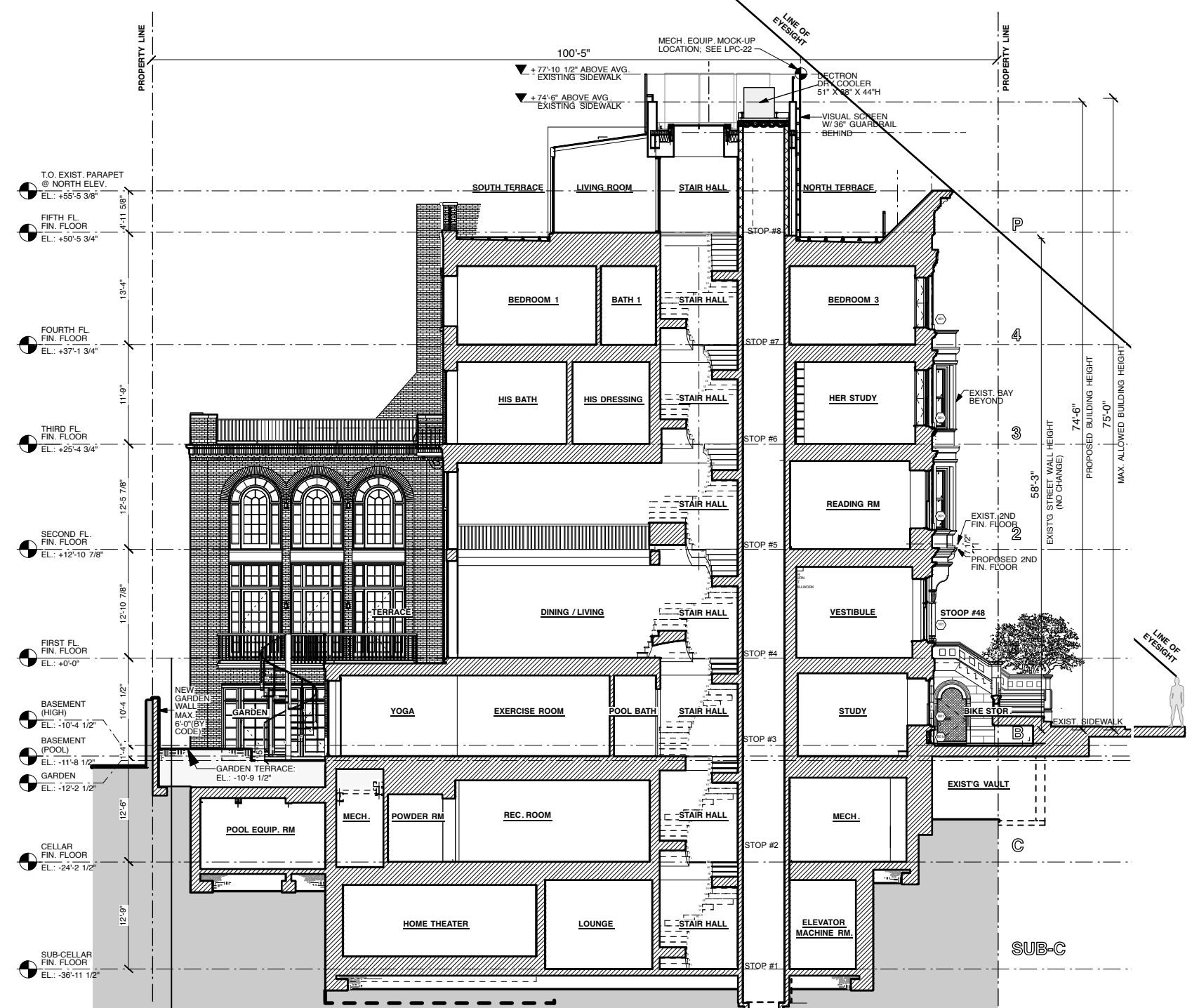
4 FOURTH FLOOR PLAN - APPROVED 2014 (WRIGHT ARCHITECTS)
LPC-17 Scale: 1/32" = 1'-0"



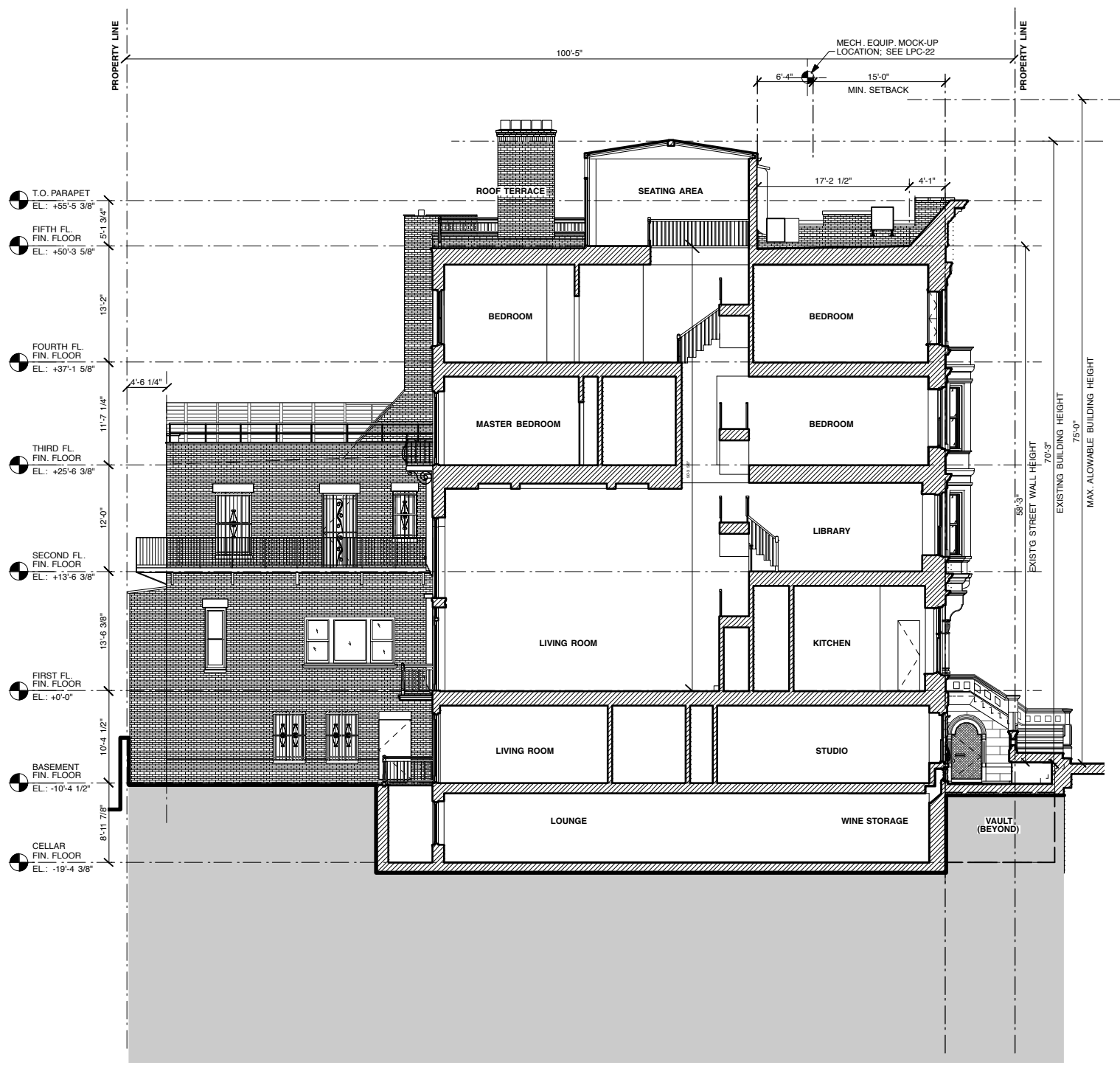
7 FOURTH FLOOR PLAN - PROPOSED
LPC-17 Scale: 1/32" = 1'-0"



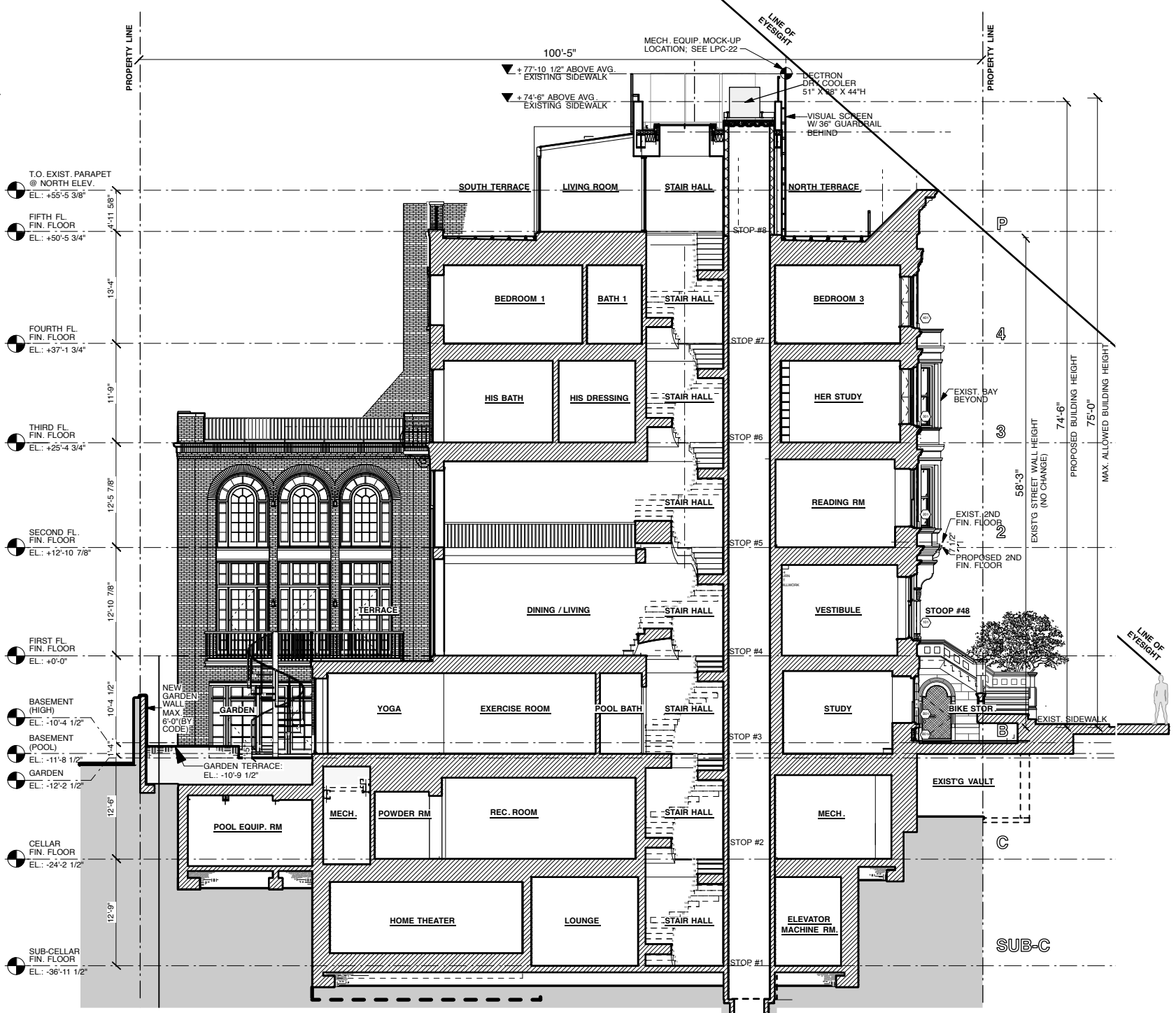
1 BUILDING SECTION - APPROVED 2014 (WRIGHT ARCHITECTS)
LPC-18 Scale: 1/16" = 1'-0"



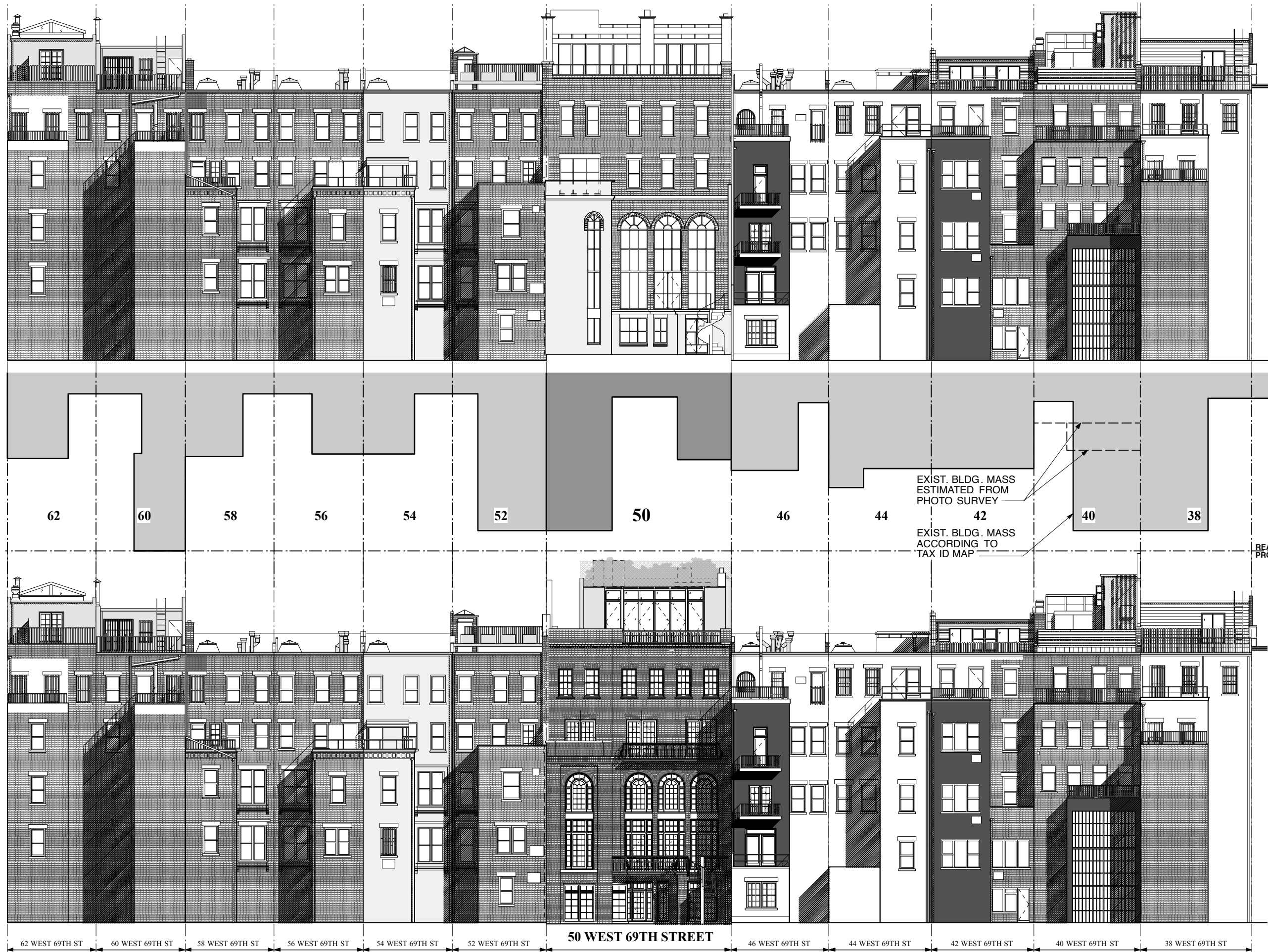
2 BUILDING SECTION - PROPOSED
LPC-18 Scale: 1/16" = 1'-0"



1 BUILDING SECTION - EXISTING
LPC-19 Scale: 1/16" = 1'-0"



2 BUILDING SECTION - PROPOSED
LPC-19 Scale: 1/16" = 1'-0"



APPROVED 2014
REAR ELEVATIONS BY
WRIGHT ARCHITECTS

PROPOSED 2016
REAR ELEVATIONS BY
OLIVER COPE ARCHITECT





VIEW FROM CENTRAL PARK (A)



VIEW FROM CENTRAL PARK (A)



VIEW FROM CENTRAL PARK (A)



VIEW FROM CENTRAL PARK WEST (A)



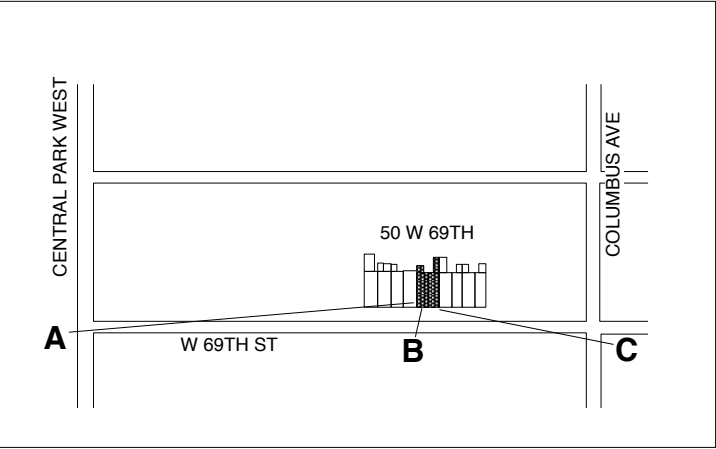
VIEW FROM CENTRAL PARK (A)



VIEW FROM 45 WEST 69TH (B)



VIEW FROM COLUMBUS AVE (C)



KEY PLAN



NOTE: PHOTOS ABOVE SHOW PREVIOUS
MOCK-UP. NEW MOCK-UP SCHEDULED
FOR WEEK OF JUN. 26, 2016.

NOTE: FOR MECH. EQUIP. MOCK-UP
LOCATION SEE DWGS 3/LPC-14 & 2/LPC-18