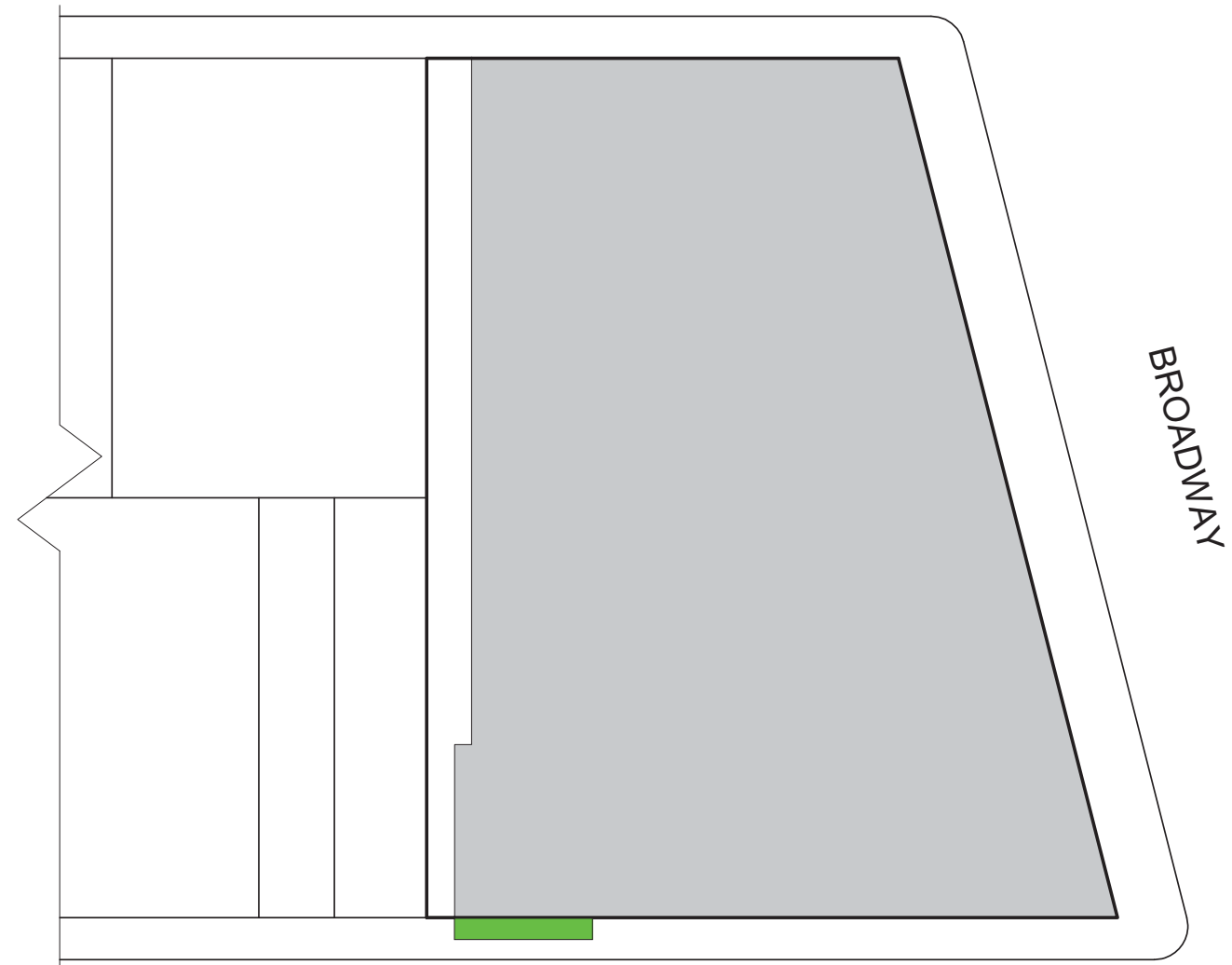


# 235 WEST 75TH STREET

March 14th, 2017

This presentation is to propose the erection of an ADA wheelchair access ramp at the South West corner of 235 West 75th Street.

WEST 76TH STREET



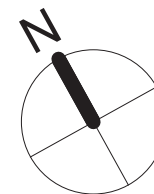
WEST 75TH STREET



BUILDING



AREA OF WORK







SOUTH EAST CORNER, 1940

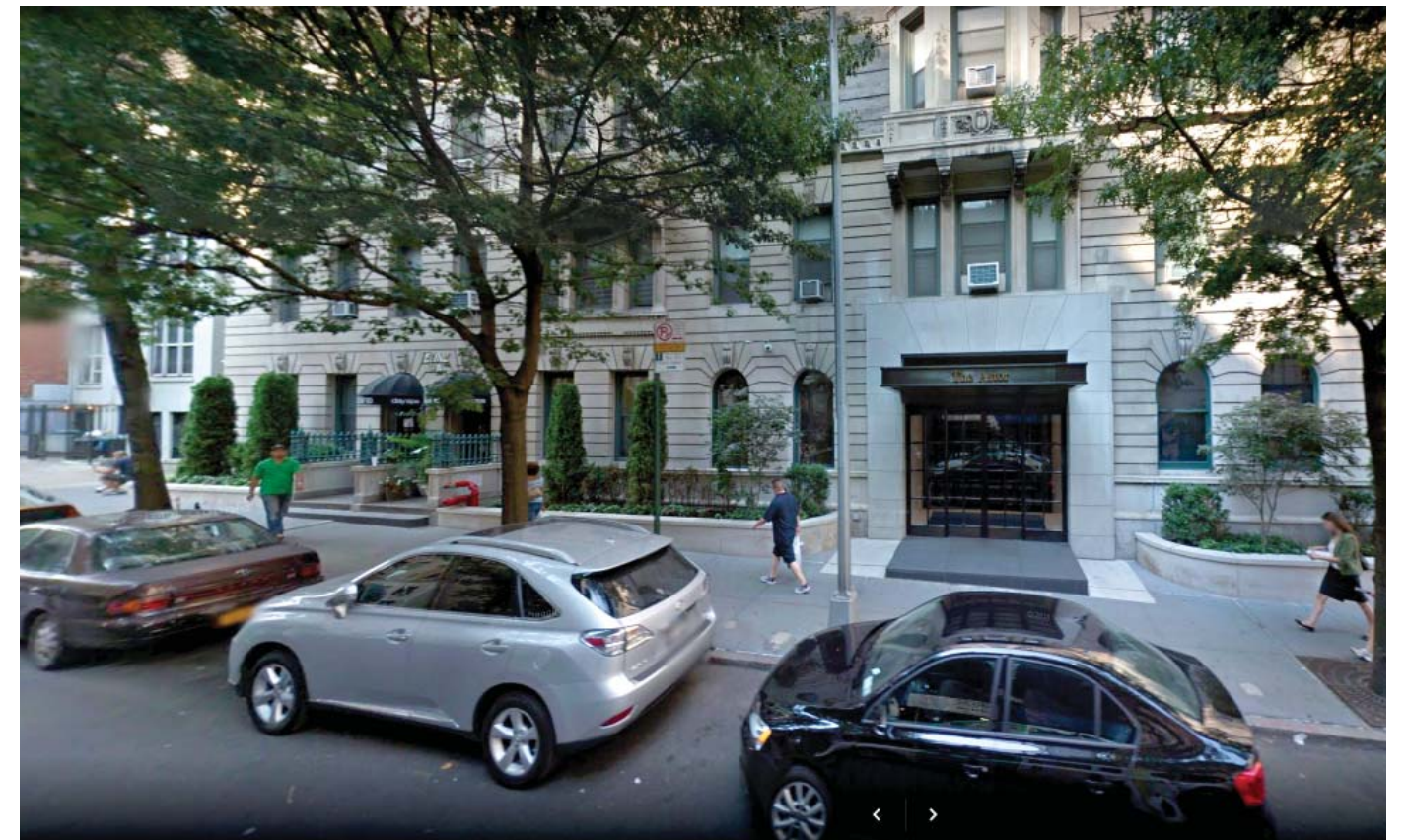


SOUTH EAST CORNER PRE- 2013





SOUTH FACADE, PRE-2013



SOUTH FACADE, 2013

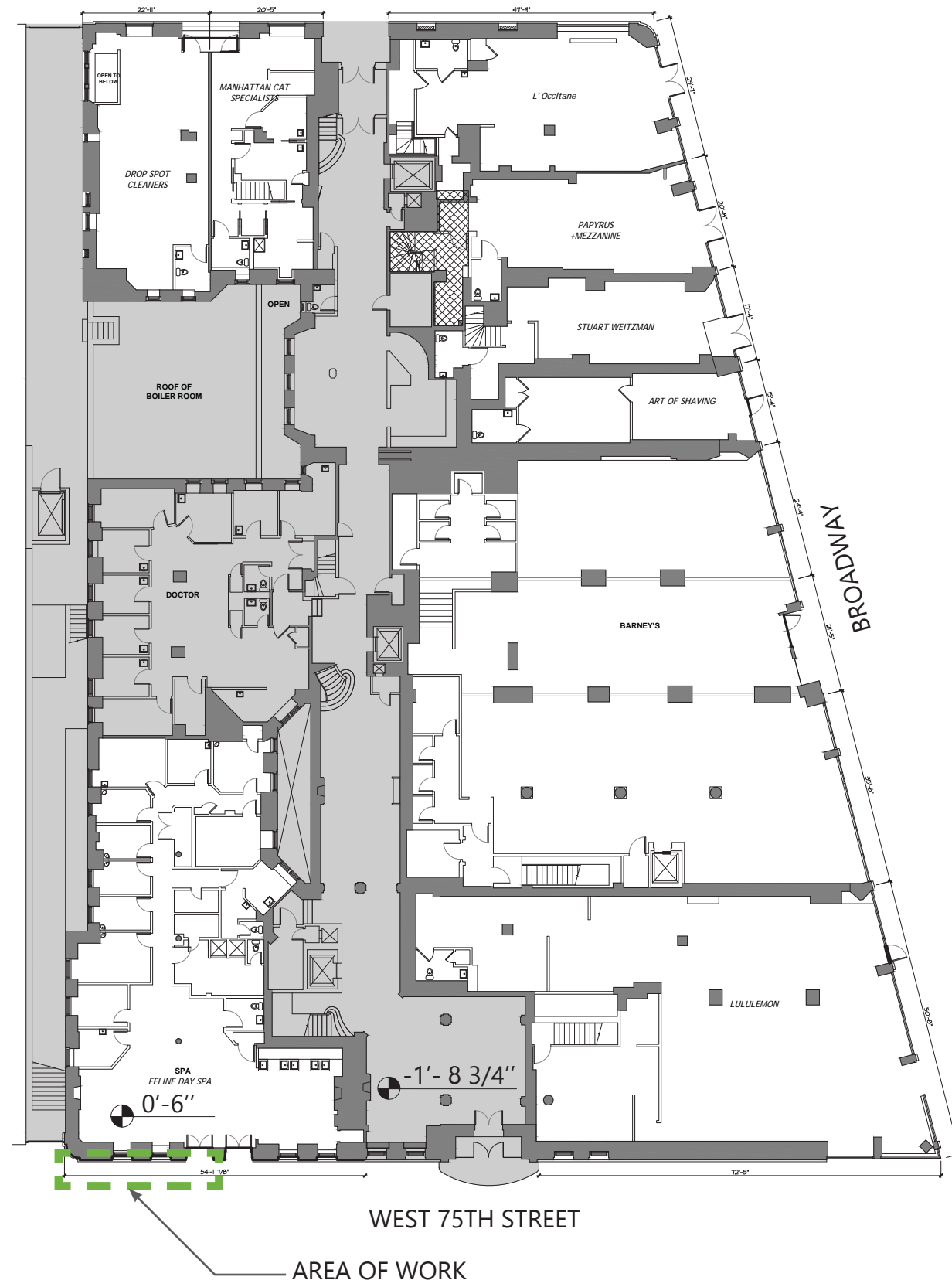


SOUTHWEST CORNER, PRE-2013



SOUTHWEST CORNER, 2013



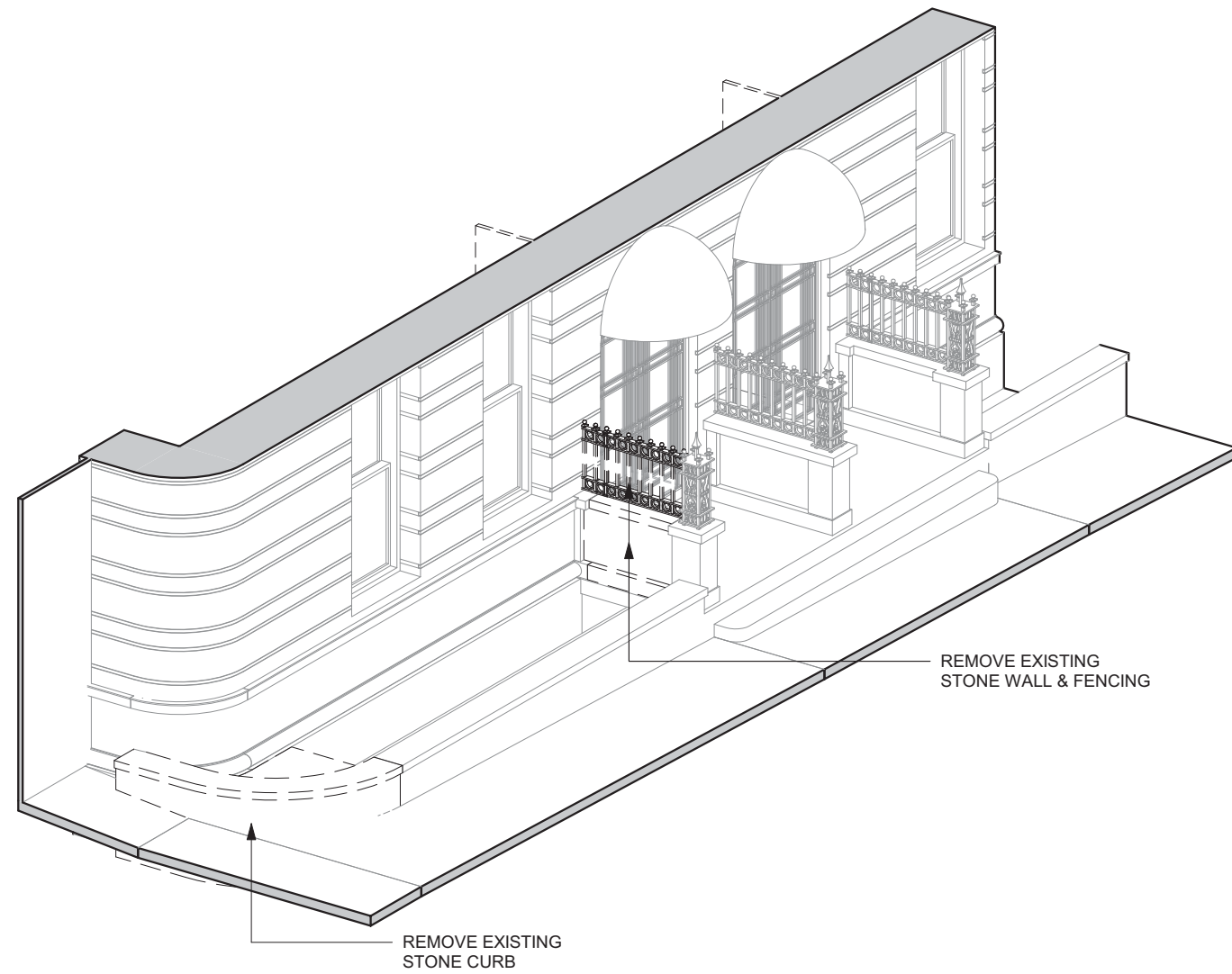




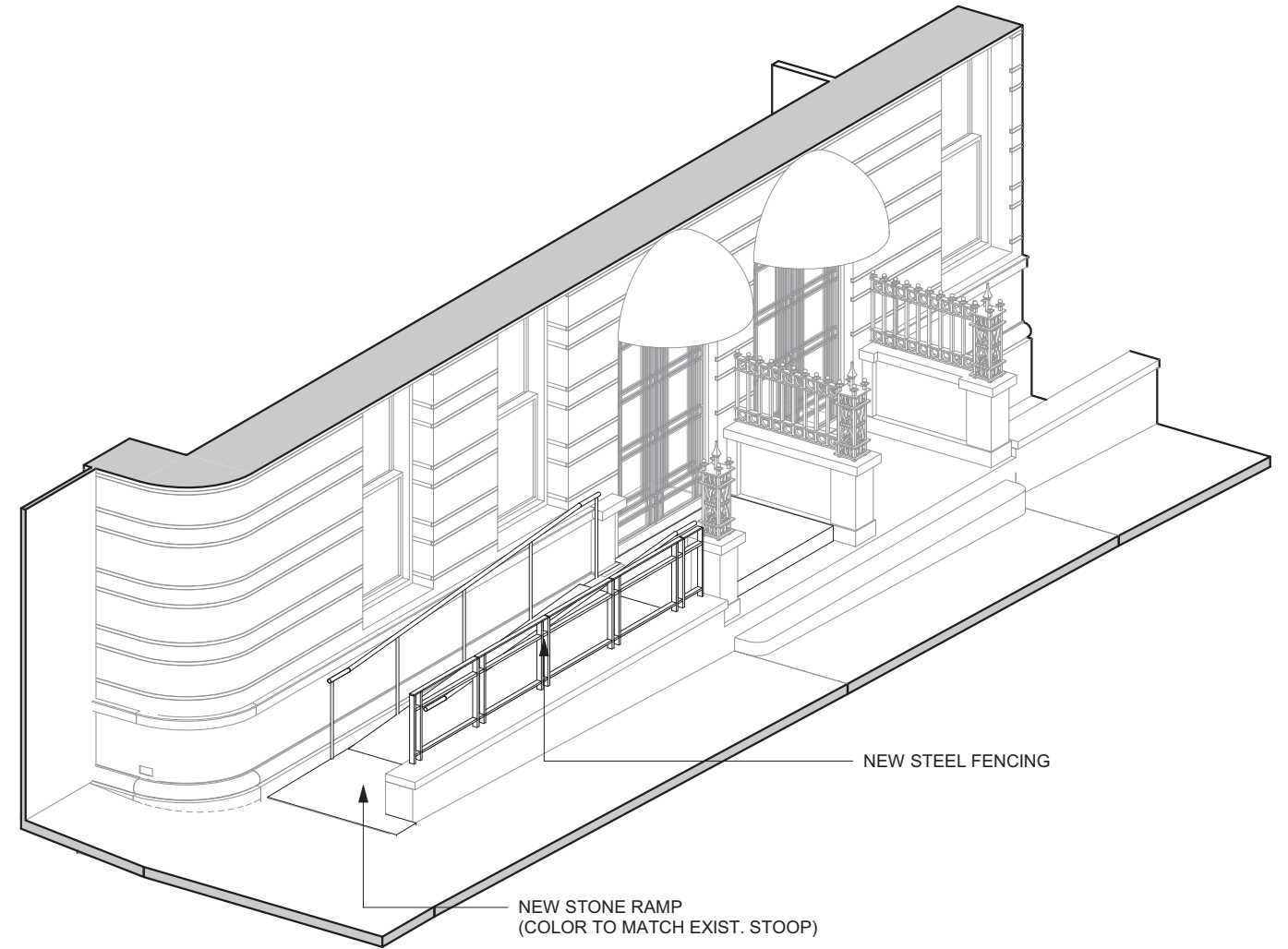
EXISTING SOUTH WEST CORNER



PROPOSED SOUTH WEST CORNER RAMP

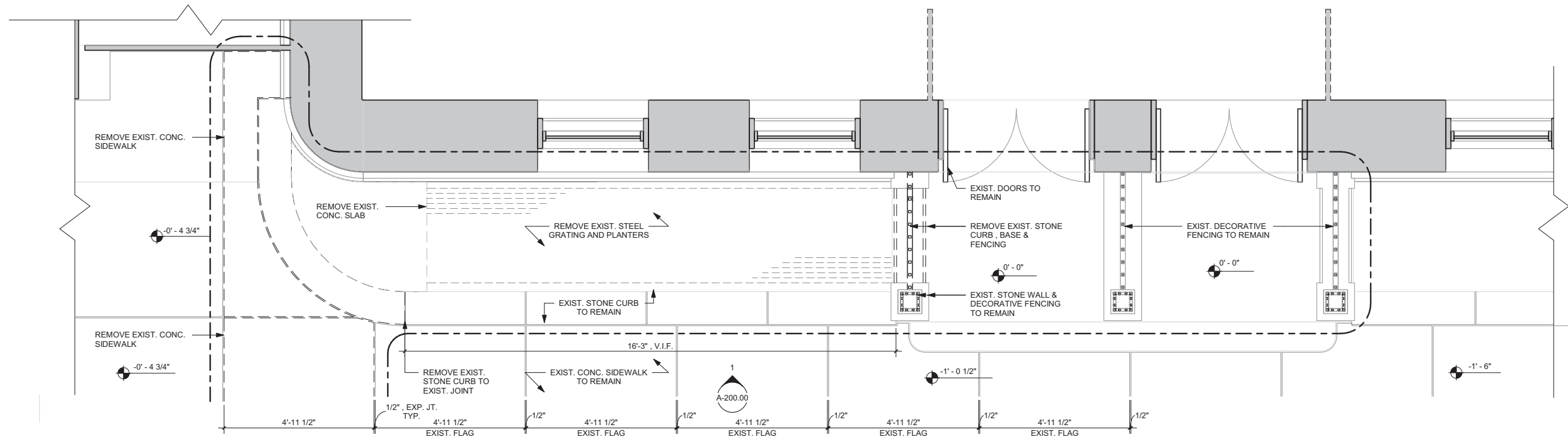


EXISTING CONDITION AXON



PROPOSED CONDITION AXON

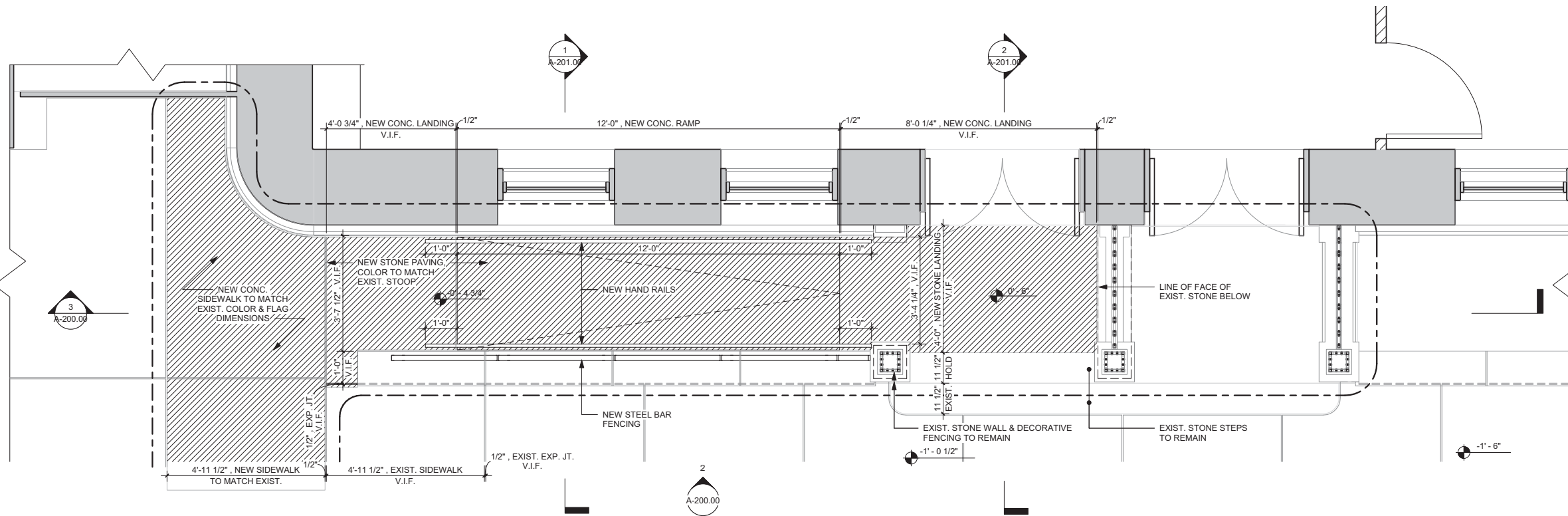




EXISTING PLAN



LOOKING EAST



PROPOSED PLAN

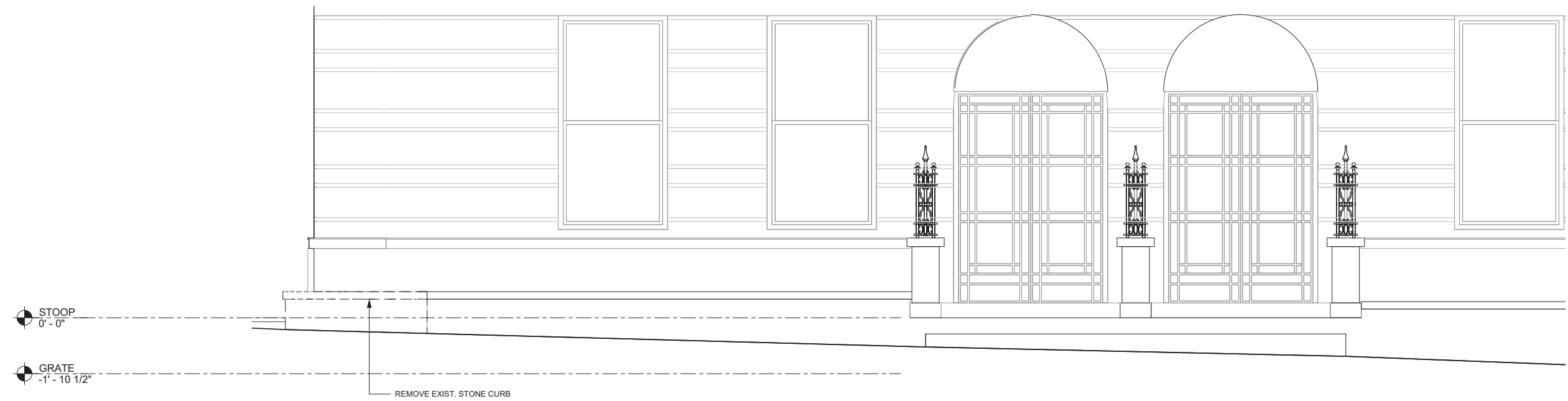


EXISTING STOOP

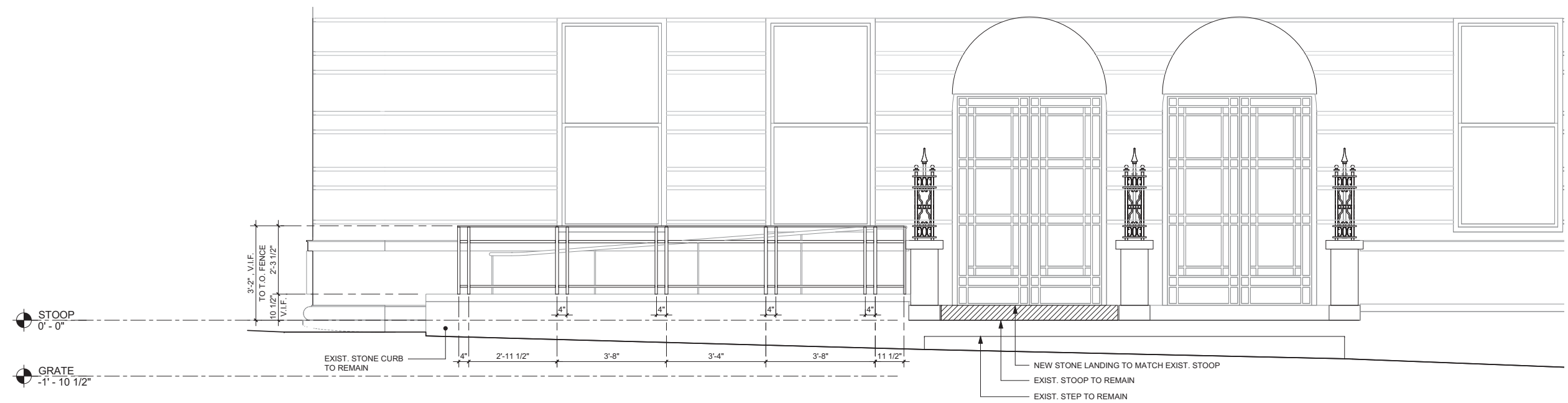


LOOKING WEST



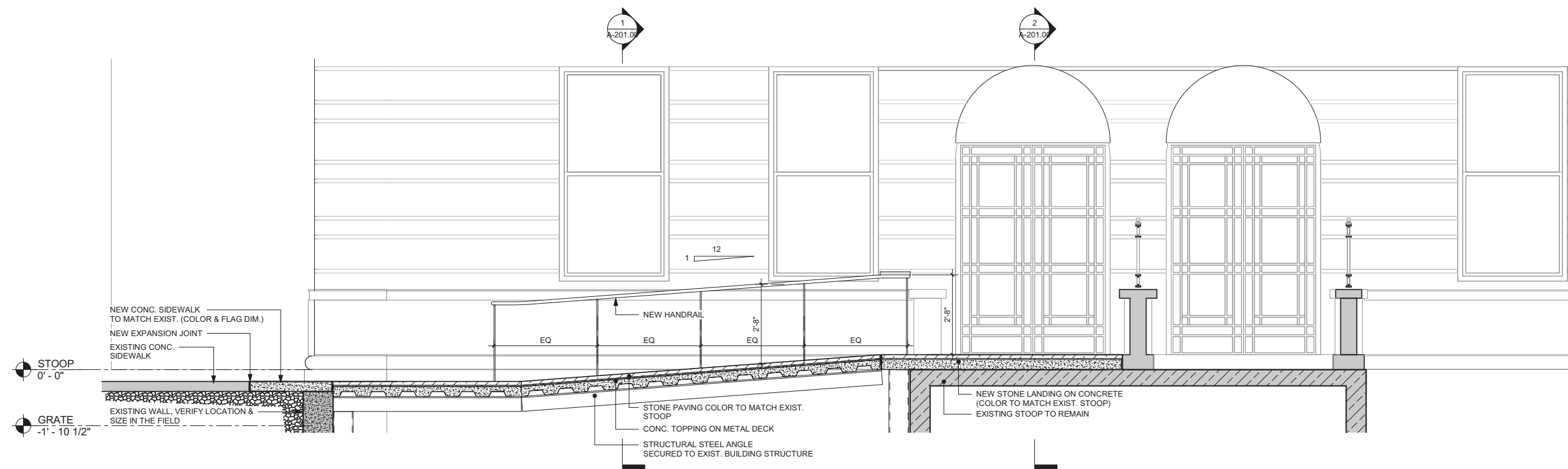


EXISTING ELEVATION



PROPOSED ELEVATION





PROPOSED RAMP SECTION



