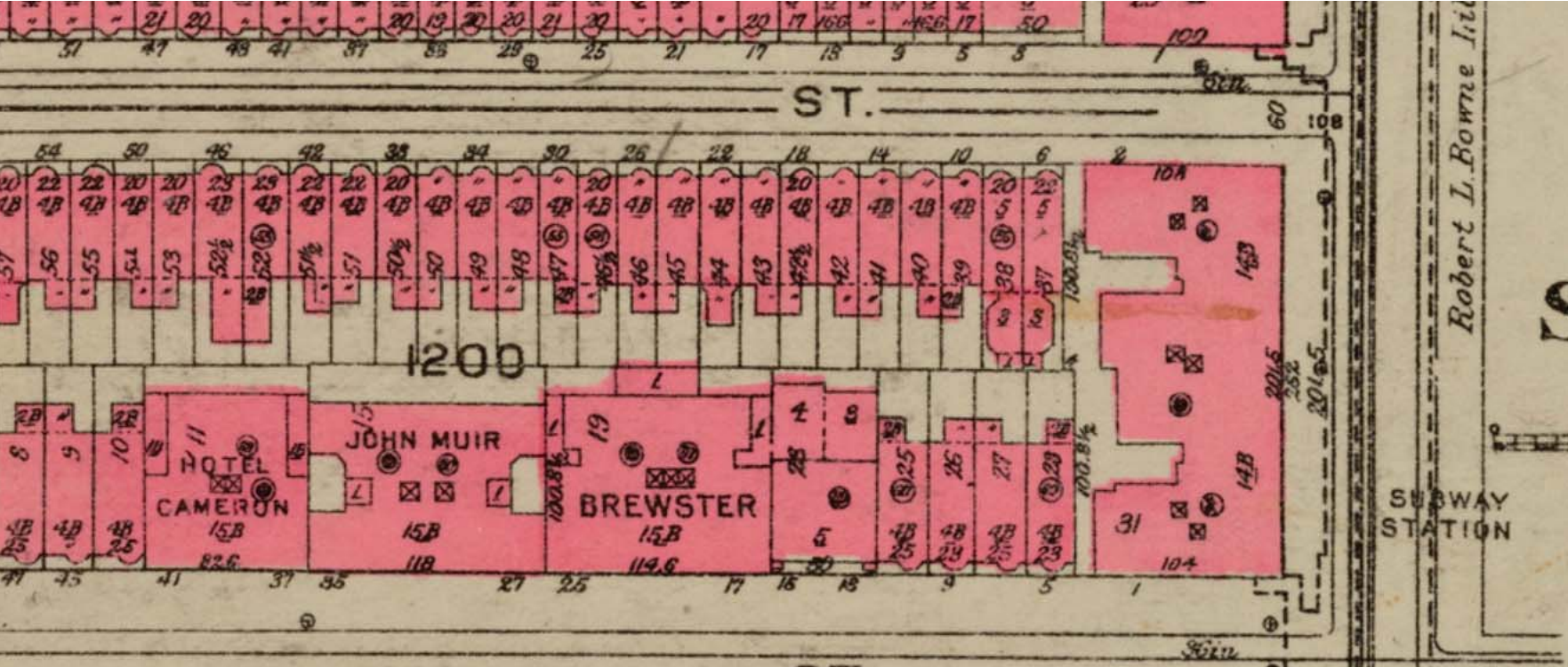


BLOCK PLAN



1930 SANBORN MAP



1940 TAX PHOTO - SOUTHEAST CORNER

262 CENTRAL PARK WEST - APT 9AC



1990 DESIGNATION PHOTO - SOUTHEAST CORNER



1990 DESIGNATION PHOTO - NORTHEAST CORNER

262 CENTRAL PARK WEST - APT 9AC

CENTRAL PARK WEST
Between West 86th Street and West 87th Street [West Side]

261-265 Central Park West
Tax Map Block/Lot: 1200/31
See: 262 Central Park West

262 Central Park West [a/k/a 1 West 86th Street
2-4 West 87th Street]
Tax Map Block/Lot: 1200/31

ORIGINAL BUILDING DATA

BUILDING NAME(s): The White House Apartments

DATE: 1927-28 [NB 44-1927]

TYPE: Apartment Building

ARCHITECT: Sugarman & Berger

OWNER/DEVELOPER: Sisbrothers Inc.

STYLE/ORNAMENT: Neo-Renaissance

Facade(s): Brick, limestone, granite, and terra cotta
Number of Stories: 14
Window Type/Material: Six-over-one double-hung/Wood
Four-over-one double-hung/Wood
Method of Construction: Steel frame construction
Fireproof
Site formerly occupied by: Two flats and three rowhouses

DESIGNATION ENTRY



CENTRAL PARK WEST AND 87TH ST - NORTHEAST CORNER

262 CENTRAL PARK WEST - APT 9AC



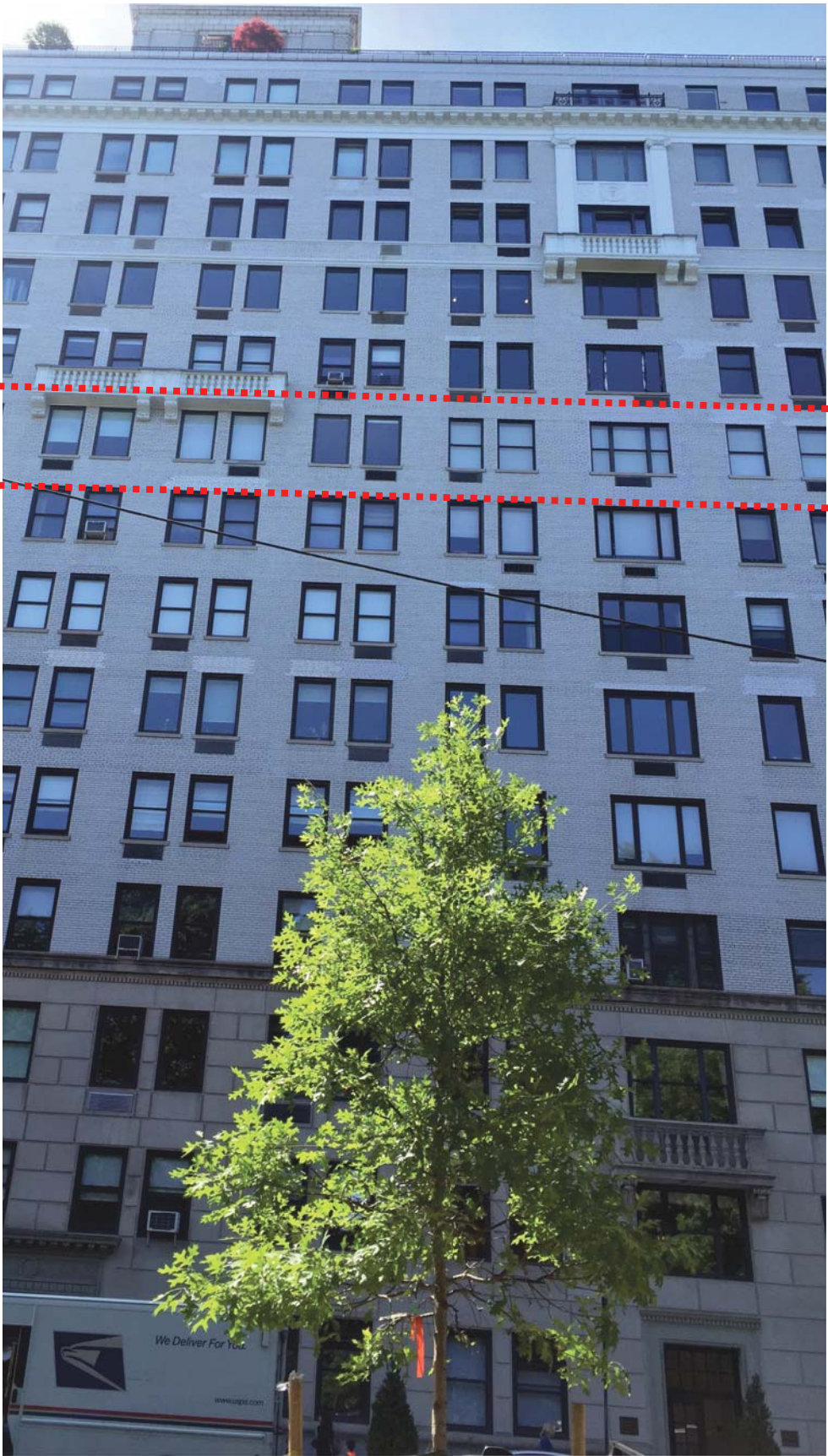
CENTRAL PARK WEST AND 86TH ST - SOUTHEAST CORNER

262 CENTRAL PARK WEST - APT 9AC



CENTRAL PARK WEST ELEVATION

262 CENTRAL PARK WEST - APT 9AC



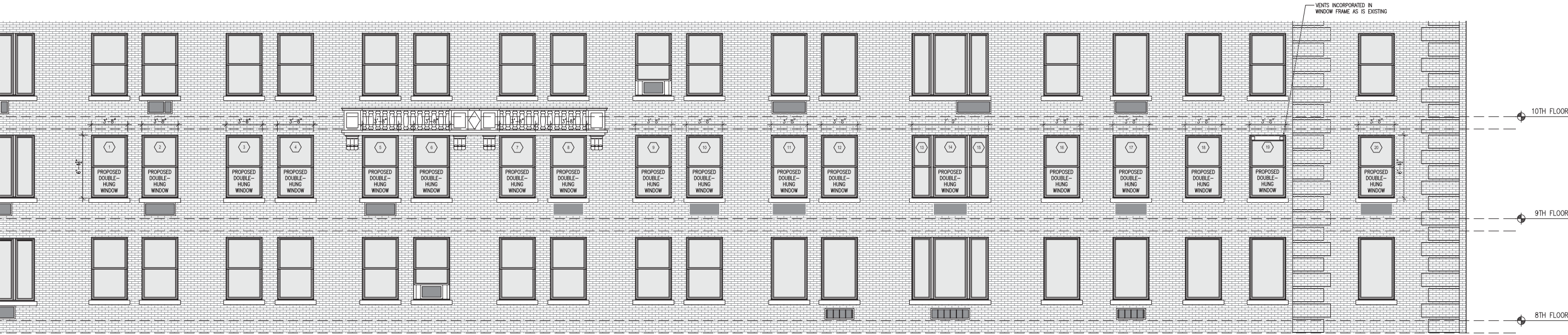
CENTRAL PARK WEST ELEVATION

262 CENTRAL PARK WEST - APT 9AC



EXISTING ELEVATION - CENTRAL PARK WEST
3/16" = 1'-0"

2



PROPOSED ELEVATION - CENTRAL PARK WEST
3/16" = 1'-0"

1

262 CENTRAL PARK WEST - APT 9AC



87TH ST ELEVATION

262 CENTRAL PARK WEST - APT 9AC



EXISTING ELEVATION - 87TH STREET
3/16" = 1'-0"

2



PROPOSED ELEVATION - 87TH STREET
3/16" = 1'-0"

1

262 CENTRAL PARK WEST - APT 9AC



REAR COURTYARD

262 CENTRAL PARK WEST - APT 9AC

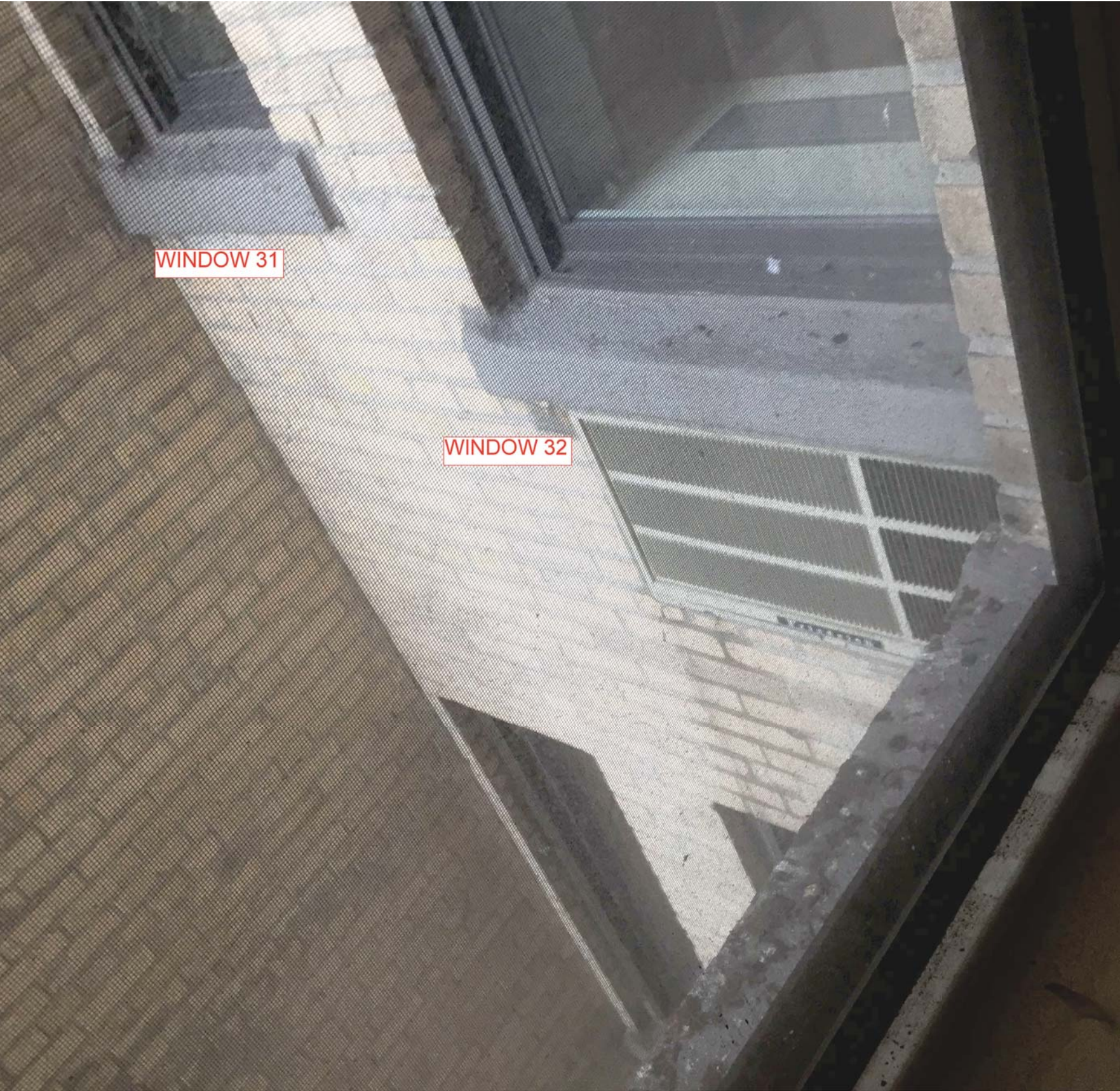


REAR COURTYARD



REAR COURTYARD

262 CENTRAL PARK WEST - APT 9AC



REAR COURTYARD



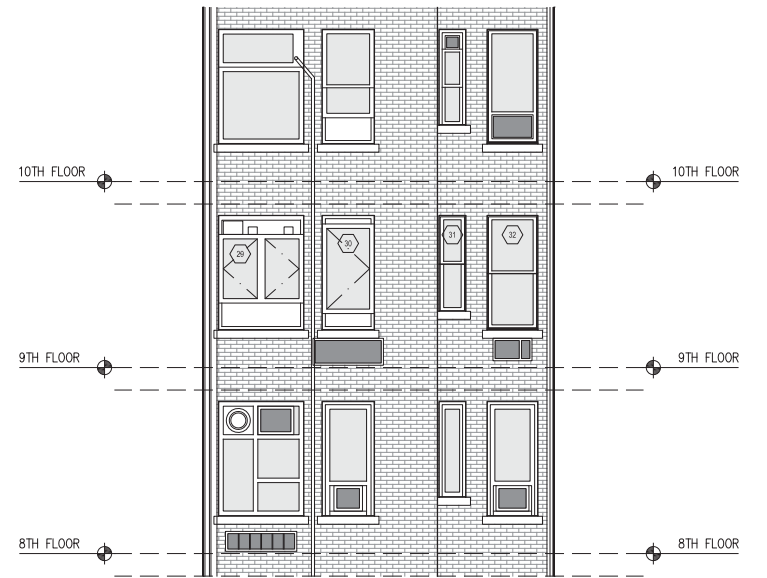
REAR COURTYARD

262 CENTRAL PARK WEST - APT 9AC



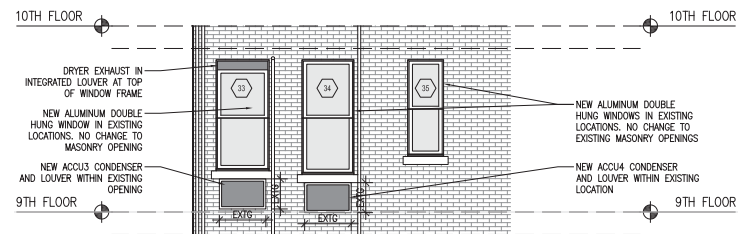
EXISTING ELEVATION - REAR - NORTH
3/16" = 1'-0"

6



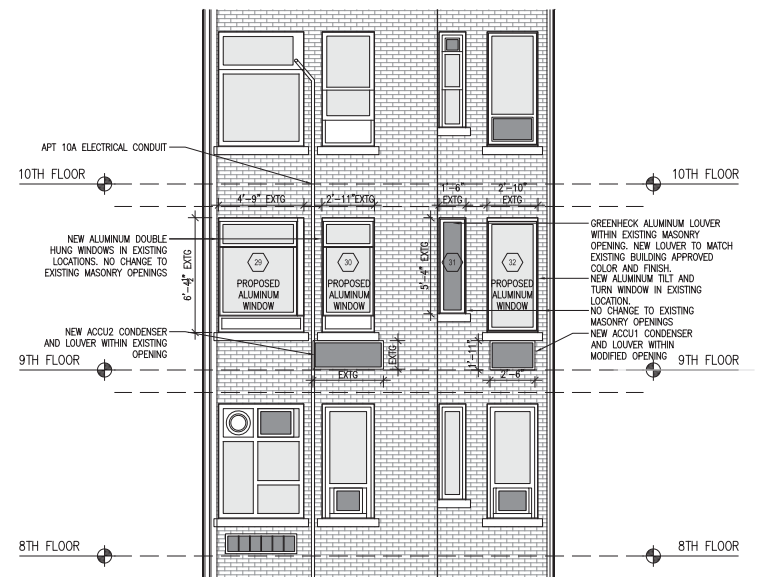
EXISTING ELEVATION - REAR
3/16" = 1'-0"

4



PROPOSED ELEVATION - REAR - NORTH
3/16" = 1'-0"

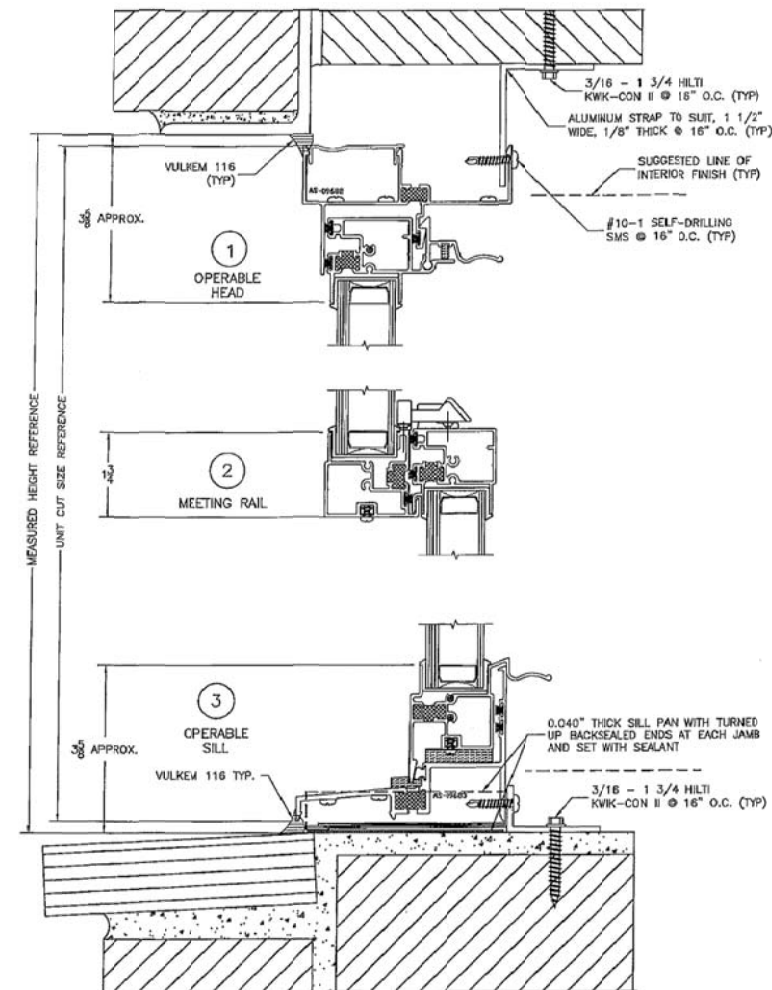
5



PROPOSED ELEVATION - REAR
3/16" = 1'-0"

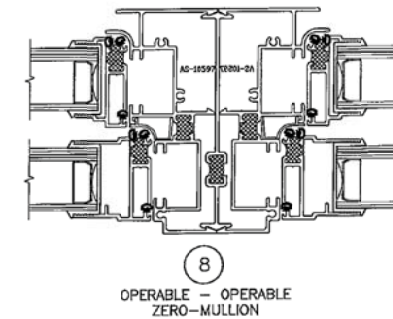
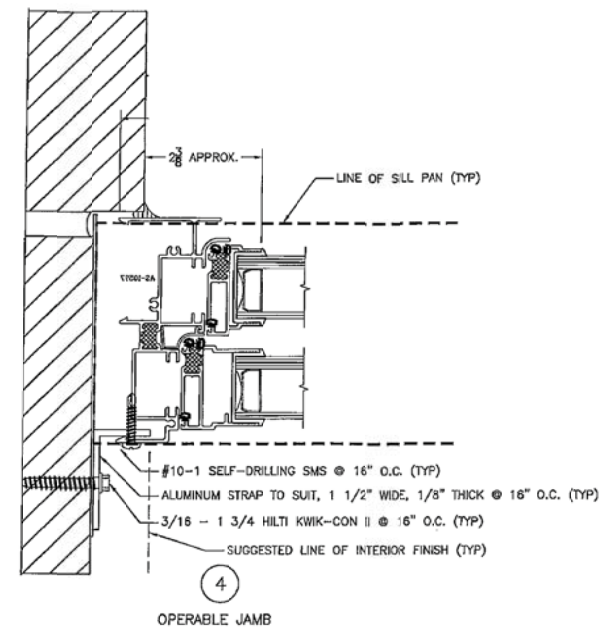
3

262 CENTRAL PARK WEST - APT 9AC



PROPOSED TYPICAL DOUBLE-HUNG WINDOW SECTION DETAILS
6" = 1'-0"

2



PROPOSED TYPICAL DOUBLE-HUNG WINDOW PLAN DETAILS
6" = 1'-0"

1

262 CENTRAL PARK WEST - APT 9AC