

CONTENTS

- 2 Historic District Map and Tax ID Photo
- 3 Existing Building Photos
- 4 Existing and Proposed Elevations
- 6 Existing and Proposed Detail Elevations
- 7 Existing and Proposed Plans
- 8 Existing and Proposed Detail Plans
- 10 Existing and Proposed Detail Sections
- 11 Existing Window Color
- 12 Proposed Window Specifications
- 15 Proposed Condensing Unit Specifications

PROJECT DESCRIPTION

EXISTING NORTH ELEVATION





PHOTO - EXISTING NORTH ELEVATION



PHOTO - EXISTING WEST ELEVATION

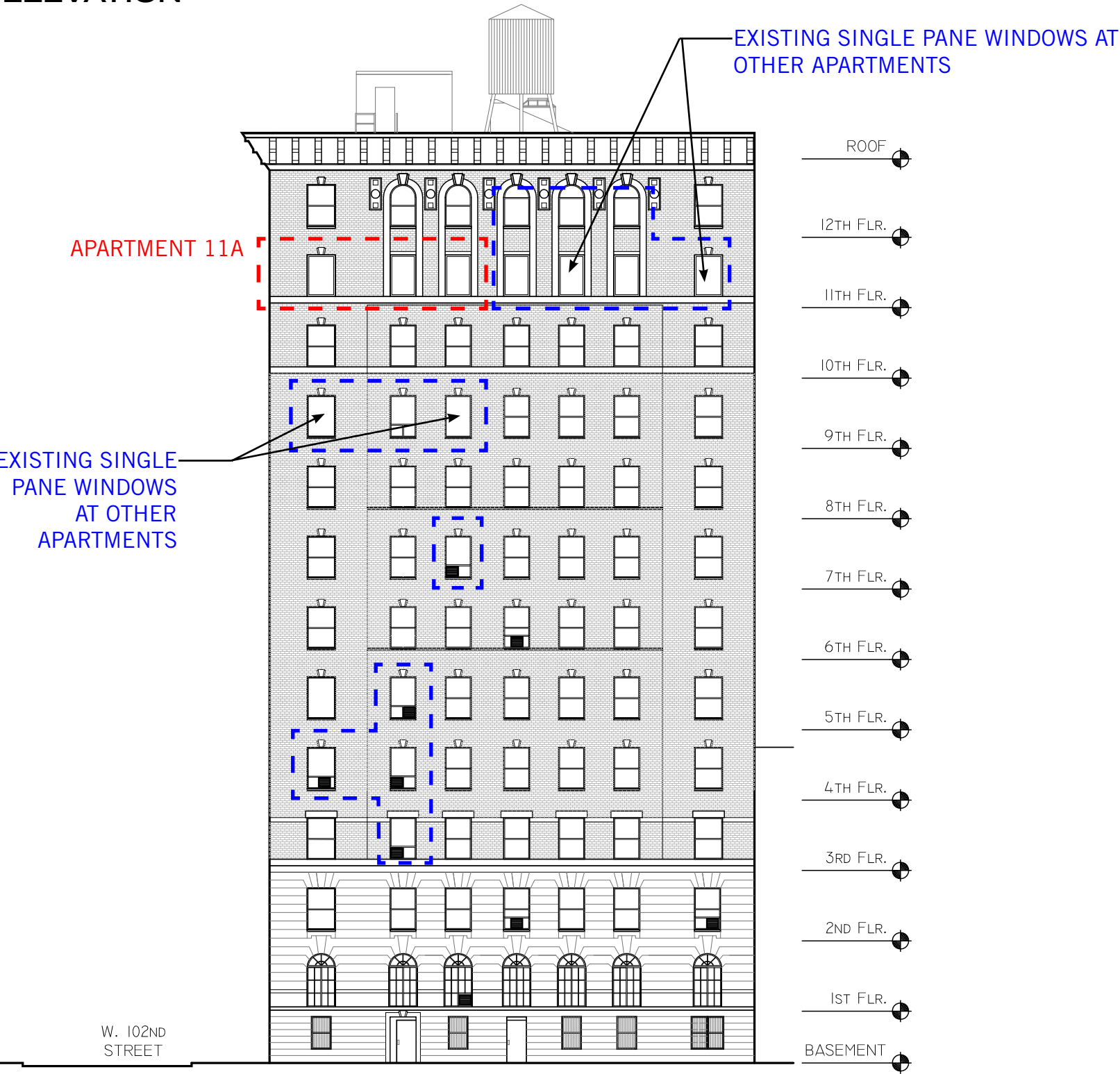


EXISTING NORTH ELEVATION

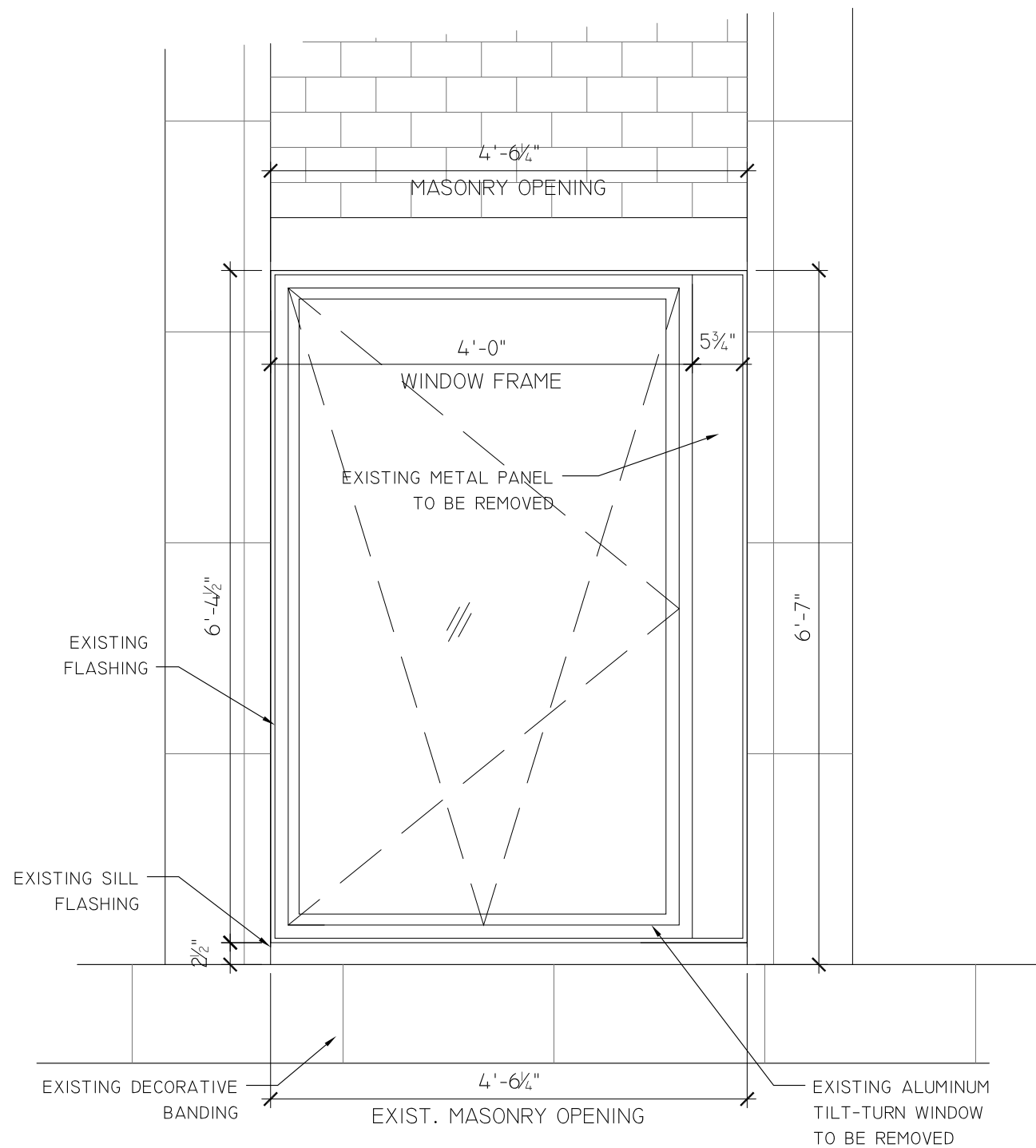


PROPOSED NORTH ELEVATION

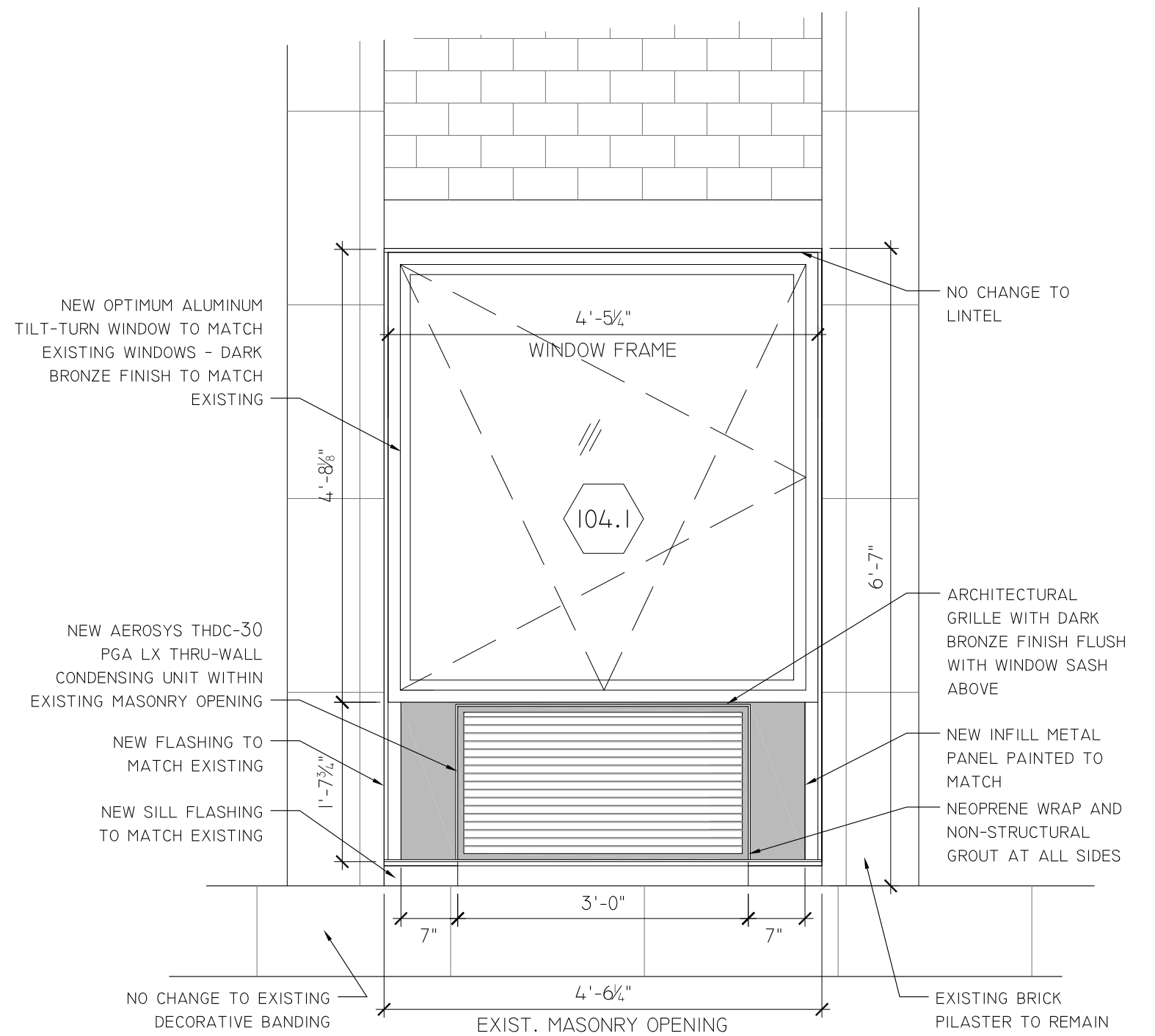
NOTE: NO WORK PROPOSED THIS ELEVATION



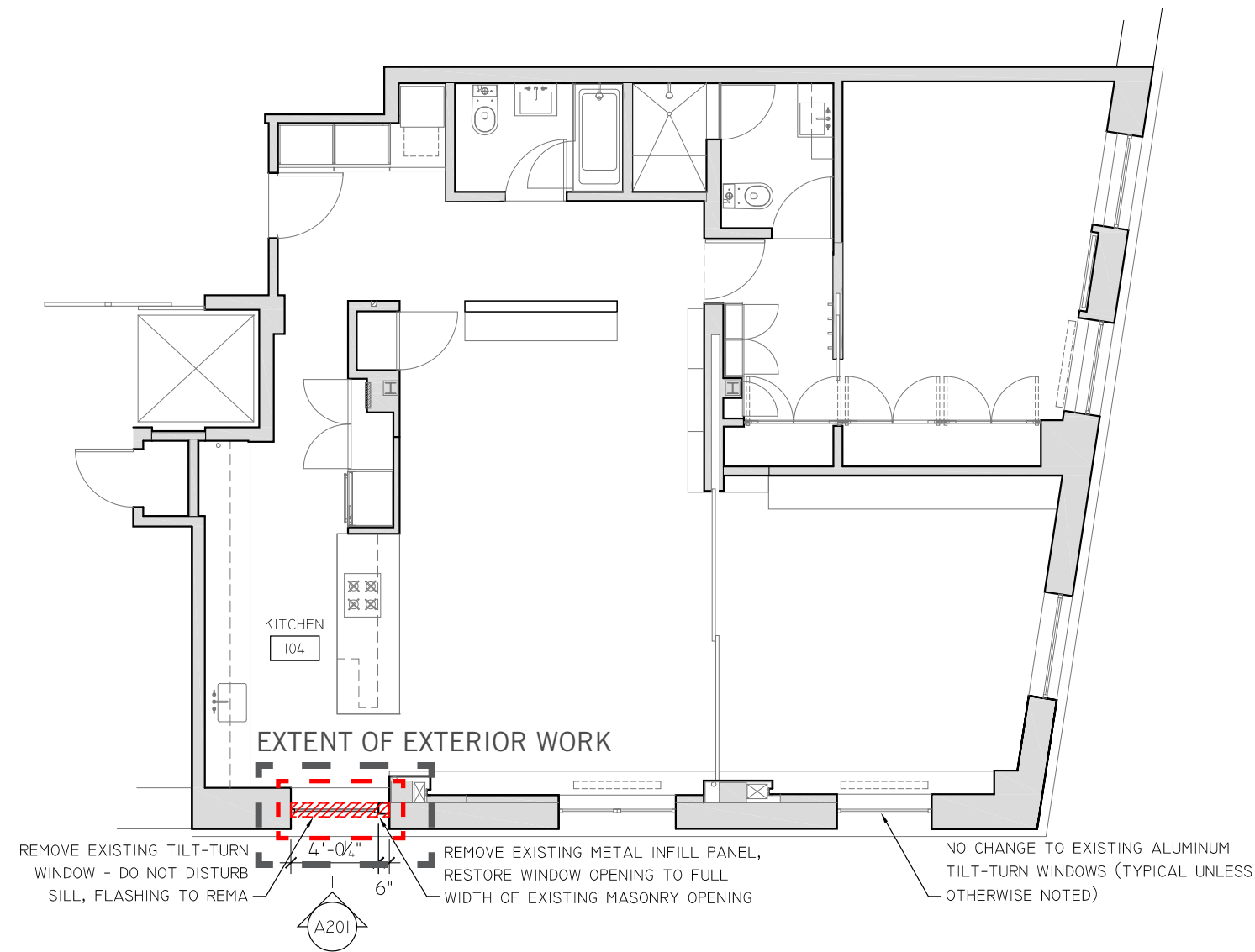
EXISTING WEST ELEVATION



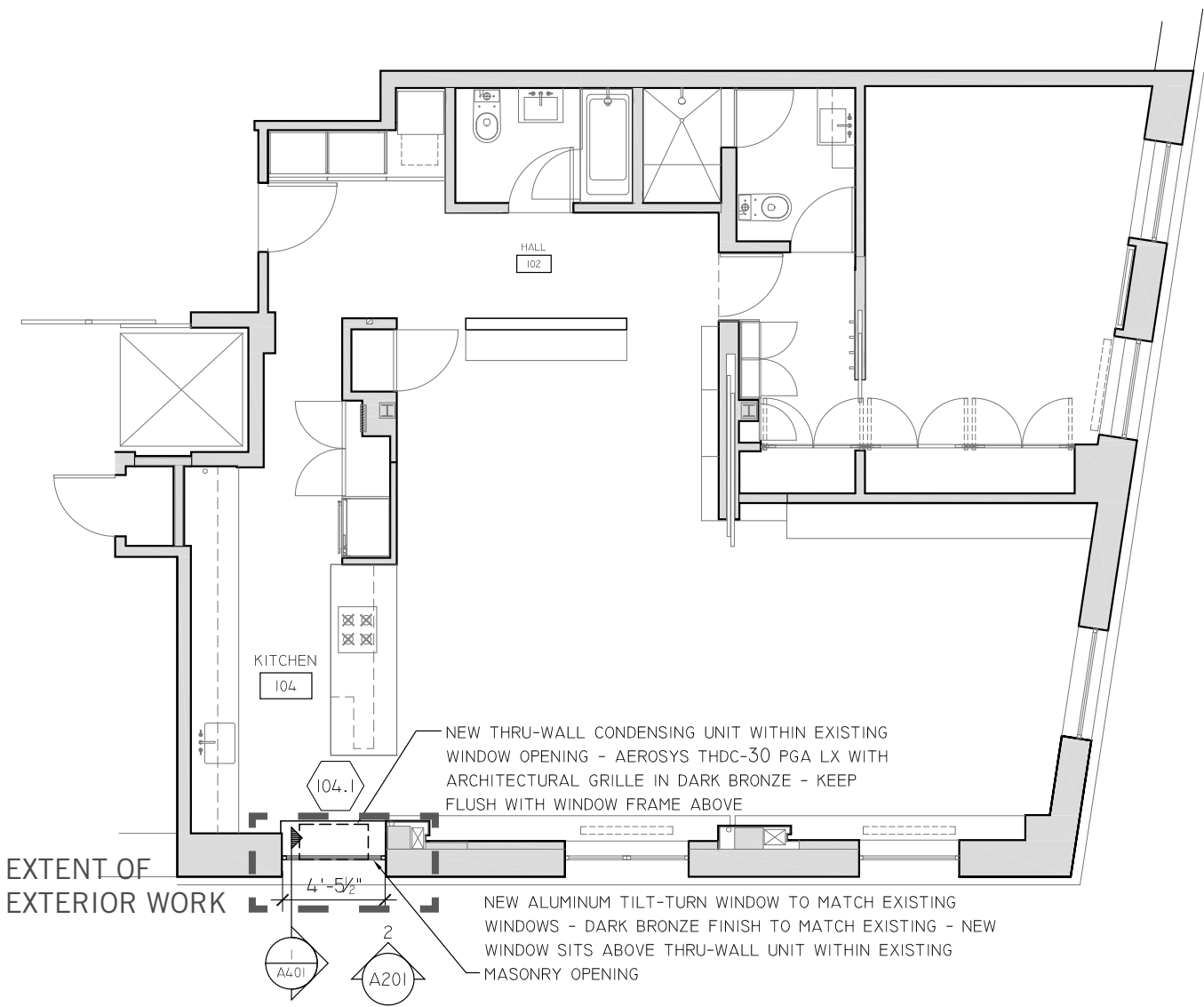
DETAIL NORTH ELEVATION
EXISTING WINDOW



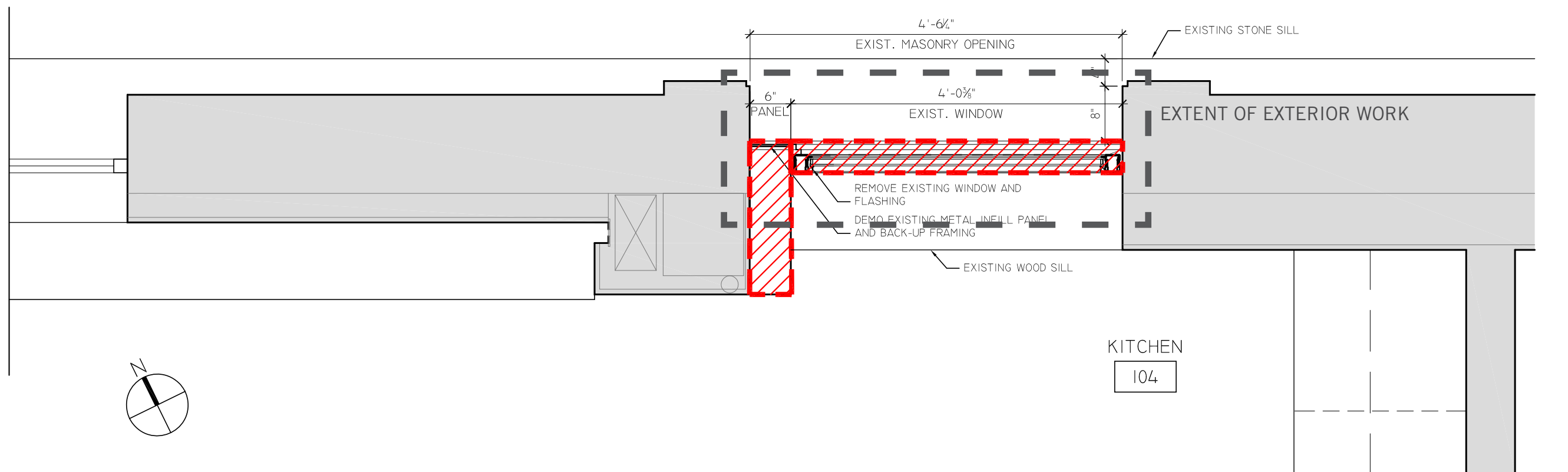
DETAIL NORTH ELEVATION
PROPOSED WINDOW AND CONDENSING UNIT



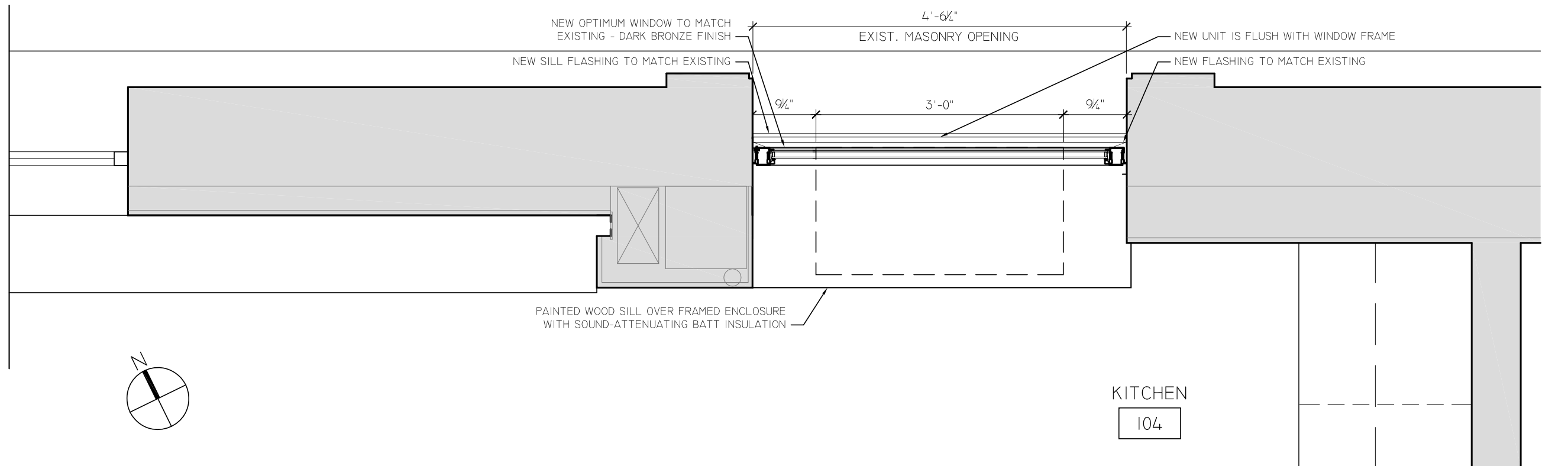
EXISTING AND DEMO PLAN



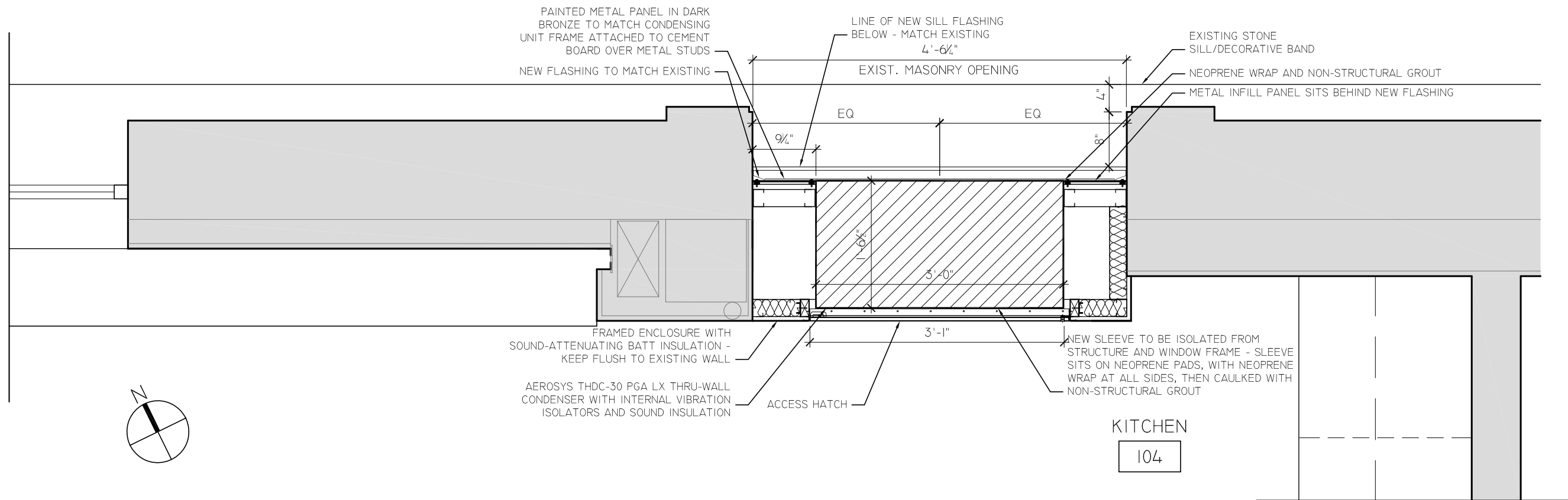
PROPOSED PLAN



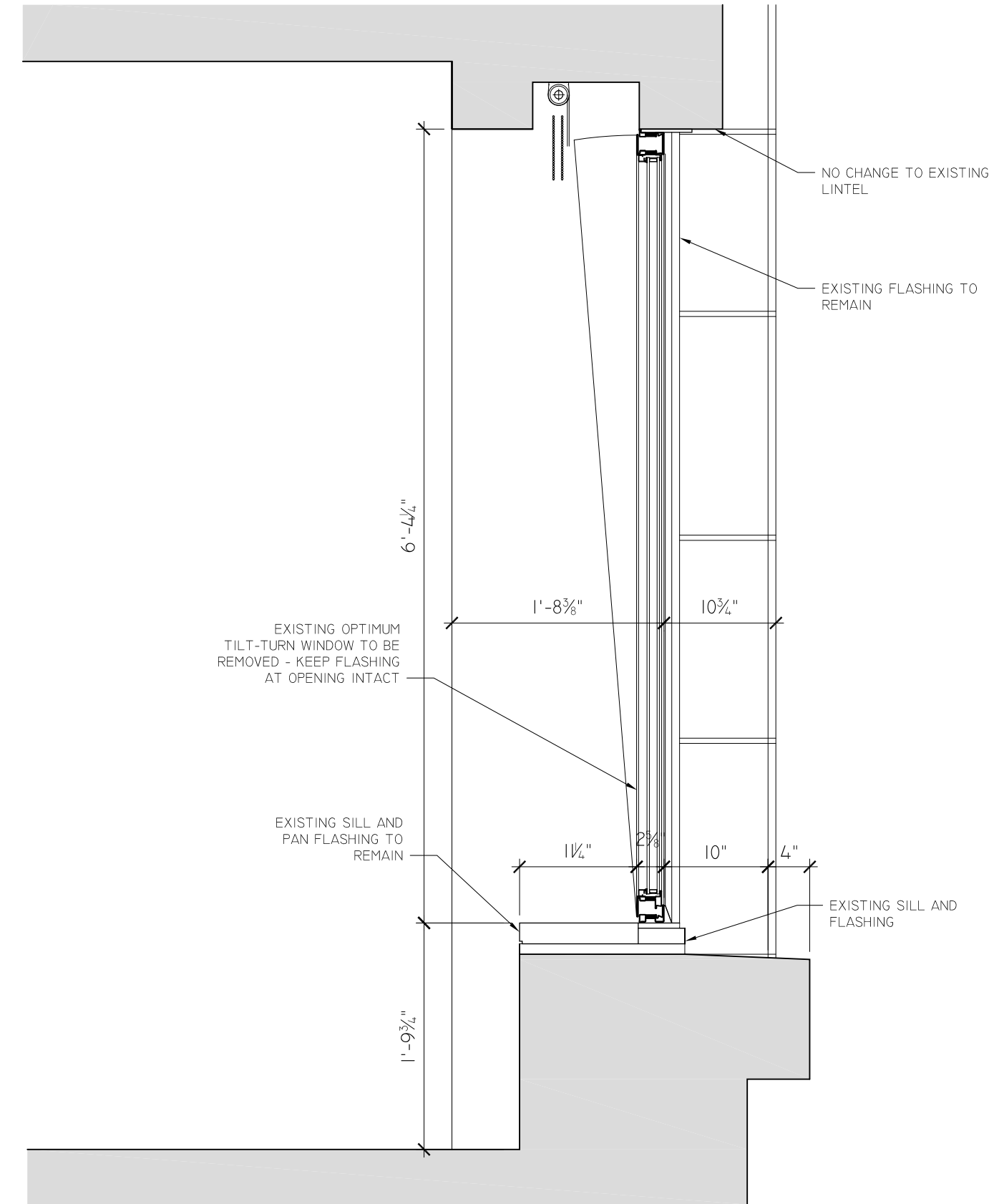
EXISTING AND DEMO DETAIL PLAN



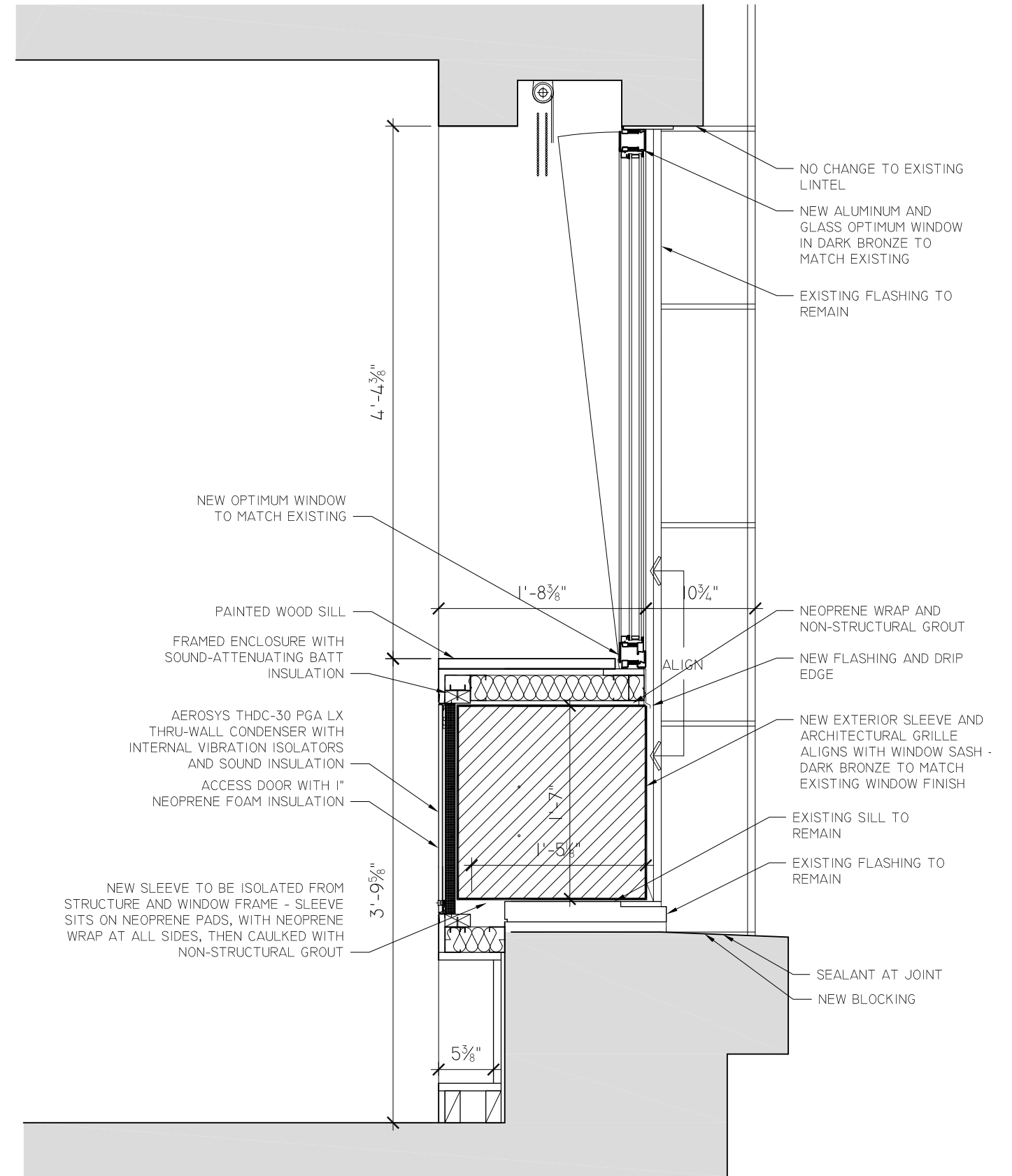
PROPOSED DETAIL PLAN AT LEVEL OF WINDOW



PROPOSED DETAIL PLAN AT LEVEL OF CONDENSING UNIT



EXISTING SECTION THROUGH WINDOW



PROPOSED SECTION THROUGH NEW WINDOW AND CONDENSING UNIT



VIEW OF EXISTING WINDOW AND FLASHING - DARK BRONZE



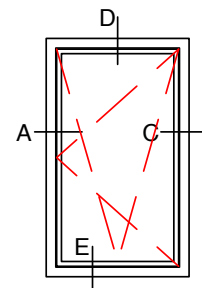
VIEW OF EXISTING LOWER WINDOWS - DARK BRONZE

METRO 680-T&T_{SERIES}

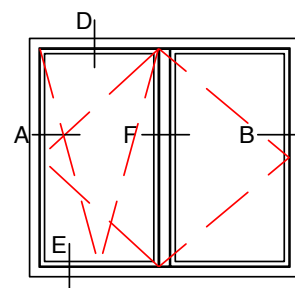
Typical Exterior Elevations

INSWING TILT & TURN / FIXED
Scale: Not To Scale

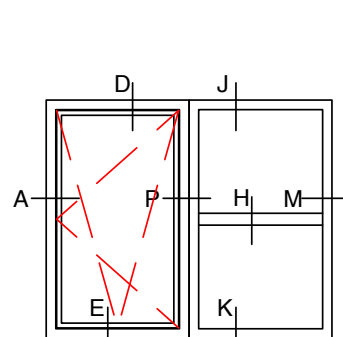
PAGE 1 OF 5



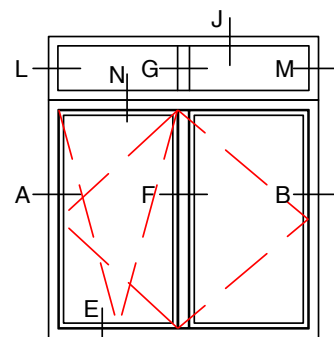
680-11-TT



680-21-FR-TT
*SECONDARY UNABLE
TO TILT



680-22-TT-FX



680-22-FR-TT-FX
*SECONDARY UNABLE
TO TILT



28 Canal Street, Ellenville, NY 12428
Phone (845) 647-1900

METRO 680-T&T_{SERIES}

Typical Details

INSWING TILT & TURN / FIXED
Scale: Half Scale

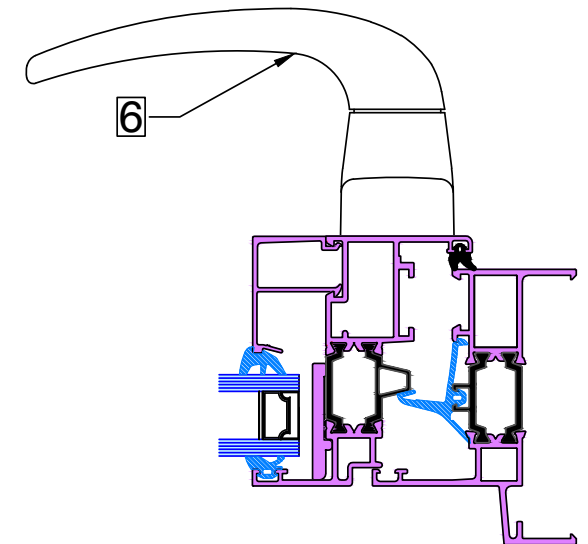
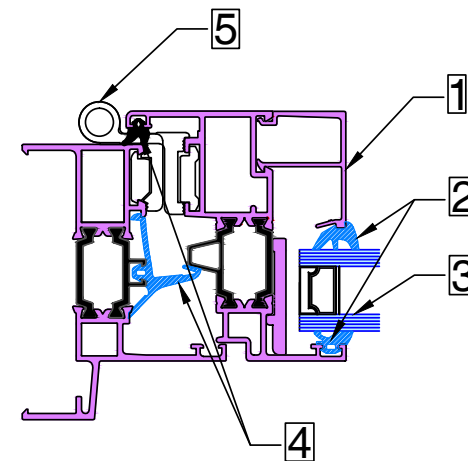
PAGE 2 OF 5

KEY (TYPICAL)

1. SNAP IN ALUMINUM GLAZING BEAD
2. WEDGE GASKET
3. 1" GLASS AND GLAZING (BY OTHERS)
4. WEATHER STRIPPING
5. METRO TILT & TURN HINGE

*TILT & TURN HARDWARE IS CONCEALED

6. METRO HANDLE



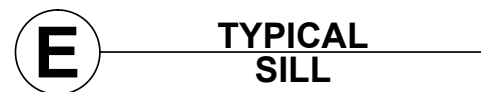
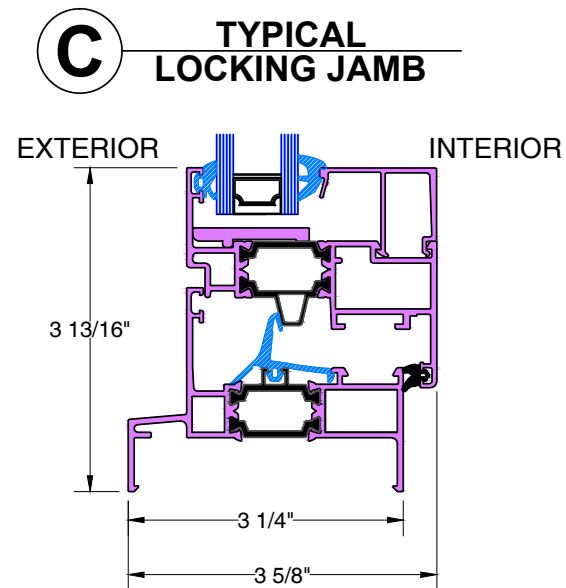
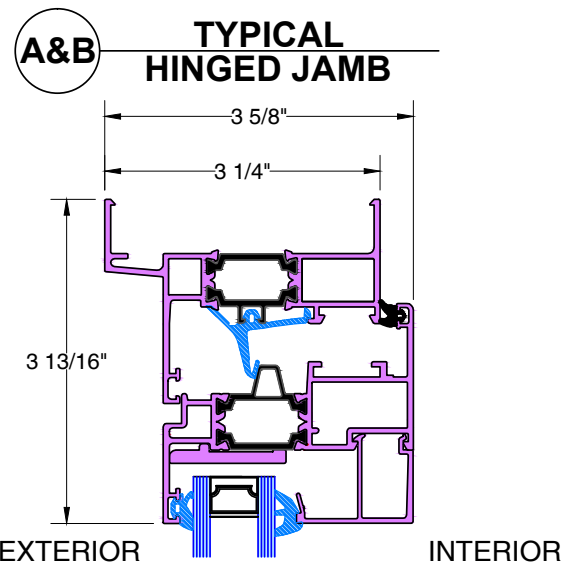
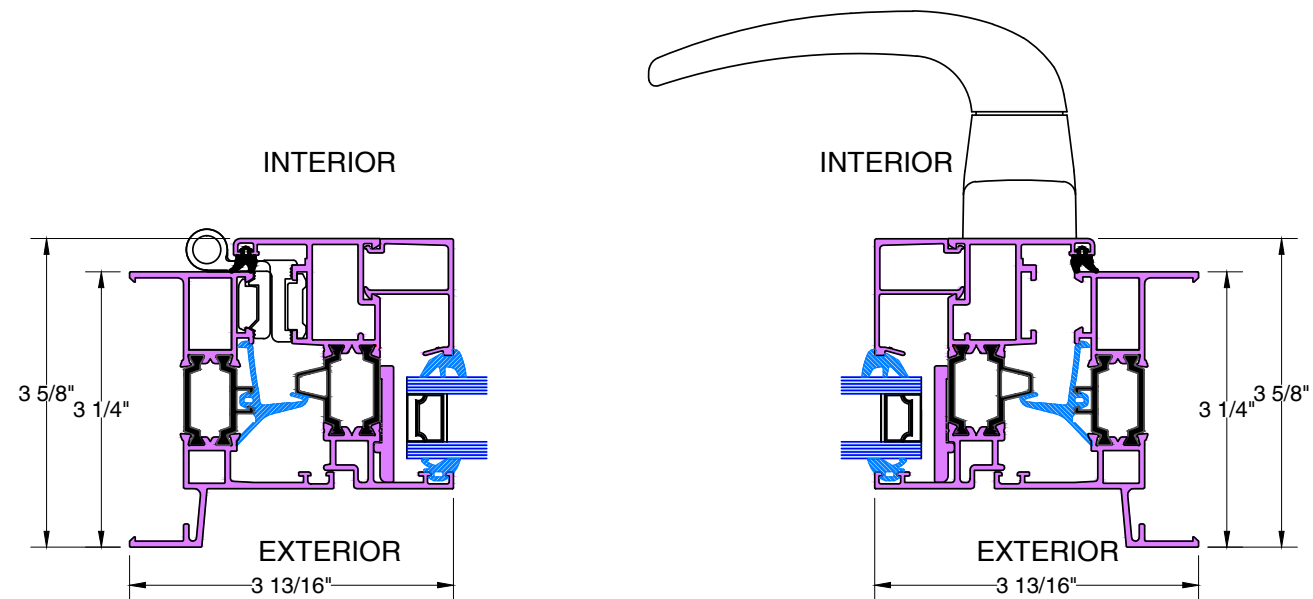
28 Canal Street, Ellenville, NY 12428
Phone (845) 647-1900

METRO 680-T&T_{SERIES}

Typical Details

INSWING TILT & TURN / FIXED
Scale: Half Scale

PAGE 3 OF 5

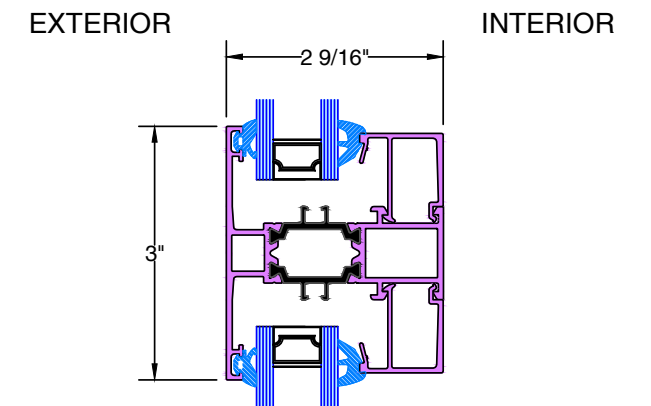
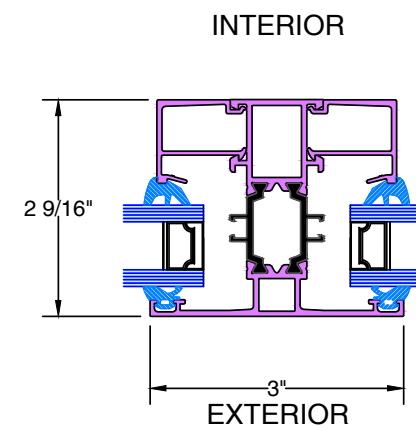
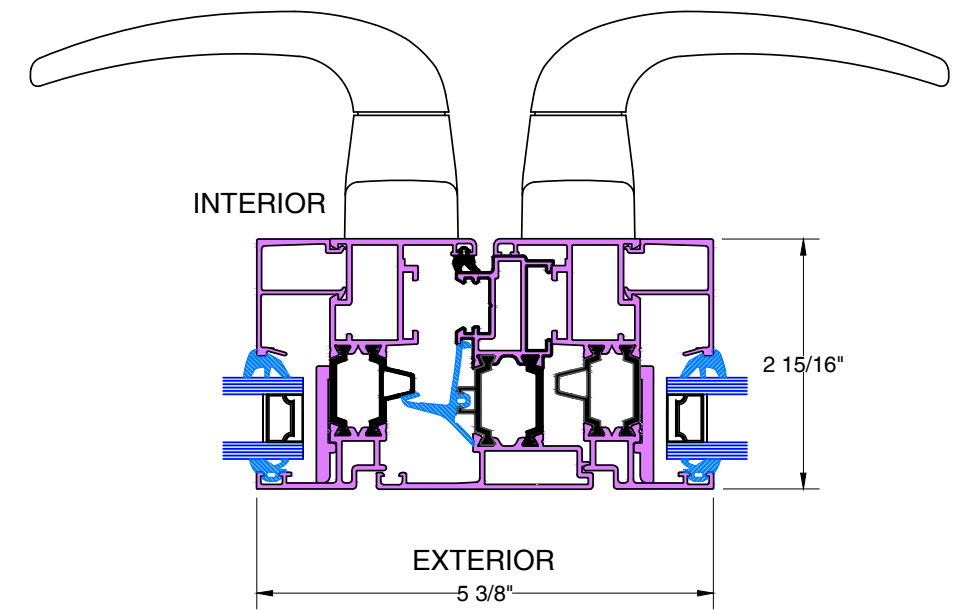


METRO 680-T&T_{SERIES}

Typical Details

INSWING TILT & TURN / FIXED
Scale: Half Scale

PAGE 4 OF 5



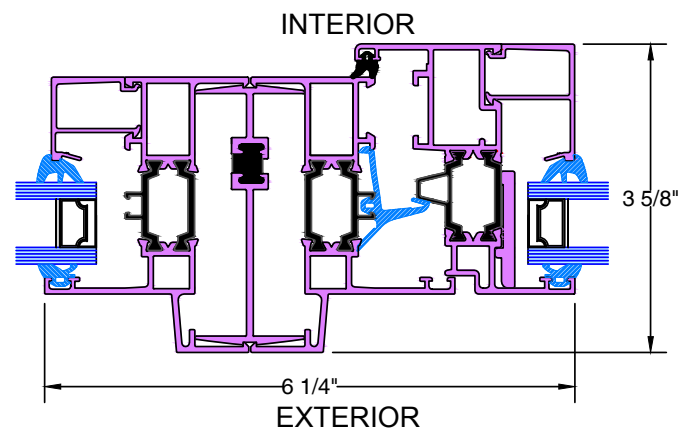
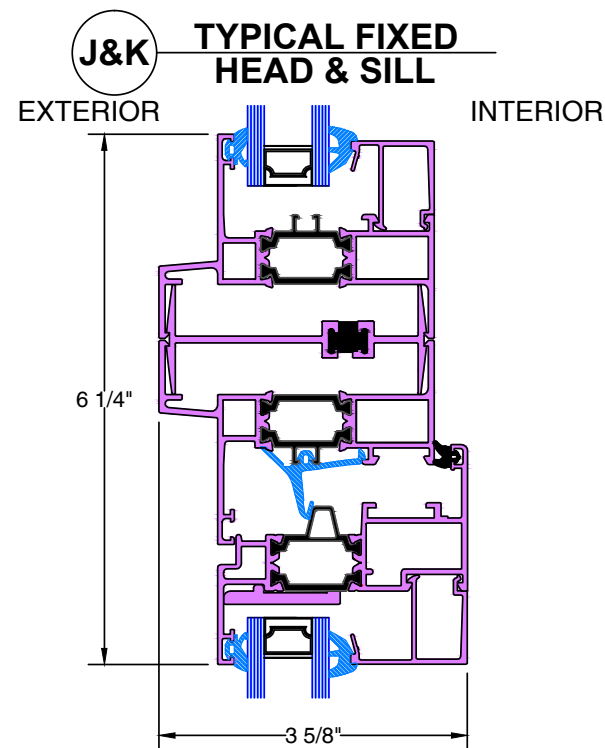
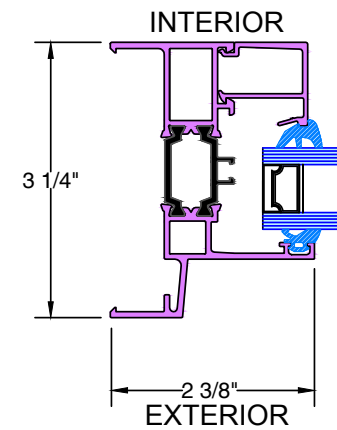
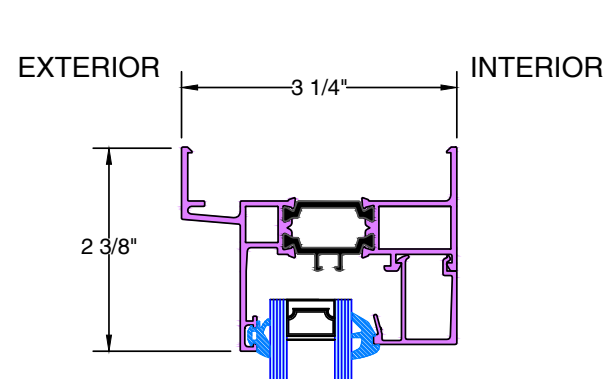
28 Canal Street, Ellenville, NY 12428
Phone (845) 647-1900

METRO 680-T&T_{SERIES}

Typical Details

INSWING TILT & TURN / FIXED
Scale: Half Scale

PAGE 5 OF 5



N TYPICAL STACKING
MULLION

P TYPICAL JOINING
MULLION



OPTIMUM WINDOW STANDARD COLORS NO CHARGE

UP CHARGE PRICING FOR THESE COLORS

 Apollo White OI-SRSI 80892	 Quaker Bronze OS-PSP320404	 Black OI-SRSI 10088	 Rela Espresso OS-PSP180369	 Sandstone OI-SRSI 42259	 Dark Bronze OS-PSP4214W
 Hartford Green OI-SRSI 30178	 Light Blue OI-SRSI 20796	 El Cajon OS-PPY3833Q	 Fashion Gray OI-SRSI 71871	 Brick Red OI-SRSI 60211	 Burgundy OS-PSP4415K
 Blade Silver OP-PK612S3	 Old Bronze OP-PK612U4	 Stainless OP-PK612S2	 Matte Bronze OP-PK612M1	 Soft Touch Smooth Black OP-PK612N1	 Vert 300 Sable' OA-SW307F
 Argento 308 Metallic OT38-90011	 Seafoam Green Metallic OT38-50035	 Dark Brown Anodized OT38-60090	 Belz Gray OS-PSP160405	 Acier OA-SW161D	 Regal Brown OS-PSP4212W

* 10 + No charge / < 10 \$500 upcharge

MOST POPULAR COLORS

Shown are a selection of available colors. Contact Optimum Window Mfg. for other custom finishes. The samples shown here are representative only. Please consult with your sales representative for actual samples.

Optimum Window Mfg. reserves the right to change specifications without notice

**The products represented h coatings due to heat, light, m

PROPOSED OPTIMUM WINDOW DETAILS AND WINDOW COLOR
14



28 Canal Street, Ellenville, NY 12428
Phone (845) 647-1900

P-Series Cabinet Available In
1-1/2 To 2-1/2 Ton

STANDARD DESIGN

- High Efficiency Scroll Compressor
- ECM Motor Technology
- Advanced Coil Design
- Powder Coated Cabinet
- Powder Coated CNC Punched Safety Screen
- Over Sized Direct Drive Blower
- Two Screw Blower Slide Out
- Non Corrosive Hardware



P-SERIES (LX) INSIDE VIEW



P-SERIES FRONT VIEW

LX OPTIONAL FEATURES

- High / Low Pressure Switches
- Low Ambient Speed Control (Down To 20 Degrees)
- 4 lbs. Acoustical ArmaFlex Lined Cabinet
- Vibration Eliminators (Liquid & Suction)
- Heavy Duty Compressor Sound Blanket



P-SERIES FRONT VIEW
OPTIONAL ARCHITECTURAL LOUVER
& ATTACHED WALL SLEEVE
GRILLPAL12 / TH/SLEEVE-P

2 YEAR
Parts Warranty
5 YEAR
Compressor Warranty

Standard Series Specifications / With LX Options

Model Number / Options	Wide	High	Deep	SEER	BTU
THDC-18PGA / LX	36	19	18-1/2	12	18,500
THDC-24PGA / LX	36	19	18-1/2	12	23,300
THDC-30PGA / LX	36	19	18-1/2	12	28,200

Electrical	Voltage	AWG Wire	MCA	MOP
THDC-18PGA / LX	208-230/1/60	14 Ga	13.0	20 AMP
THDC-24PGA / LX	208-230/1/60	12 Ga	19.7	30 AMP
THDC-30PGA / LX	208-230/1/60	12 Ga	19.0	30 AMP

Indoor Unit	Rheem*	CFM	Voltage
THDC-18PGA / LX	RBHP-17J06	675	208-230/1/60
THDC-24PGA / LX	RBHP-21J07	900	208-230/1/60
THDC-30PGA / LX	RBHP-21J07	1000	208-230/1/60

Model Number / Options	Blower Discharge	Weight	Compressor	Liquid / Vapor
THDC-18PGA / LX	Side	185 lbs.	Scroll	3/8" / 3/4"
THDC-24PGA / LX	Side	190 lbs.	Scroll	3/8" / 3/4"
THDC-30PGA / LX	Side	195 lbs.	Scroll	3/8" / 3/4"

Electrical	Motor FLA	Motor HP	Compressor RLA	Compressor LRA
THDC-18PGA / LX	1.7	0.25	9	48.0
THDC-24PGA / LX	2.8	0.33	13.5	58.3
THDC-30PGA / LX	3.0	0.50	12.8	64.0

*AeroSys THDC series units are compatible with most indoor air handlers. All specifications are subject to change without notice.
Check your state and local building codes before every installation for electrical requirements.

*Equipment was tested and certified by an independent third party to AHRI 210/240 or DOE standard 10 CFR Part 430 (Energy or Water Conservation Program for Consumer Products) and the Energy Policy and Conservation Act, as amended. Test results and reports are available on AHRI's website, www.ahridirectory.org or DOE's CCMS website.

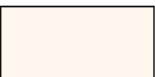


Accepted For Use
City of New York
Department of Buildings
MEA 85-04-E



Listing # 4008574
Complies with
UL 1995
Heating & Cooling
Equipment

AeroPak™ architectural louvers are designed to cover the outside face of the unit, adding that additional finished touch to your project, while giving extra protection to the condenser coil. They are constructed with extruded anodized aluminum and can be ordered to match any color. (Please consult the factory).



Bone White



Dark Bronze



Portland Stone



Light Stone



Shellburne



Forrest Green



Sandstone



Herringbone



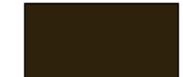
Colomado Red



Sahara Tan



Black



Medium Bronze



Architectural Louver (Tank Tan) Shown

AeroPak Optional Architectural Louvers

Part Number	Available On	Description (** Lead Time)
PP517	All Models	AeroPak Tank Tan Replacement Safety Screen
GRILLAP01A	All Models	AeroPak Architectural Louver Extruded Aluminum (Anodized Aluminum)**
GRILLAP02A	All Models	AeroPak Architectural Louver Extruded Aluminum (K Bone White)**
GRILLAP03A	All Models	AeroPak Architectural Louver Extruded Aluminum (K Dark Bronze)**
GRILLAP04A	All Models	AeroPak Architectural Louver Extruded Aluminum (K Portland Stone)**
GRILLAP05A	All Models	AeroPak Architectural Louver Extruded Aluminum (K Light Stone)**
GRILLAP06A	All Models	AeroPak Architectural Louver Extruded Aluminum (K Shellburne)**
GRILLAP07A	All Models	AeroPak Architectural Louver Extruded Aluminum (K Forest Green)**
GRILLAP08A	All Models	AeroPak Architectural Louver Extruded Aluminum (K Sandstone)**
GRILLAP09A	All Models	AeroPak Architectural Louver Extruded Aluminum (K Herringbone)**
GRILLAP10A	All Models	AeroPak Architectural Louver Extruded Aluminum (K Colomado Red)**
GRILLAP11A	All Models	AeroPak Architectural Louver Extruded Aluminum (K Sahara Tan)**
GRILLAP12A	All Models	AeroPak Architectural Louver Extruded Aluminum (K Stone Grey)**
GRILLAP13A	All Models	AeroPak Architectural Louver Extruded Aluminum (K Ascot White)**
GRILLAP14A	All Models	AeroPak Architectural Louver Extruded Aluminum (K Black)**
GRILLAP15A	All Models	AeroPak Architectural Louver Extruded Aluminum (K Medium Bronze)**
GRILLAP16A	All Models	AeroPak Architectural Louver Extruded Aluminum (K Taupe)**
GRILLXAPA	All Models	AeroPak Architectural Louver Extruded Aluminum (Custom Painted)**