

Midtown Preservation Architecture and Engineering, P.C.



Proposed Planter Installation at 322 Central Park West, NY,

NY Dennis Mele, R.A, Principal

Presenters: Jason Dames, Proj. Mgr., Christina Redmond, R.A



MIDTOWN PRESERVATION
ARCHITECTURE & ENGINEERING, P.C.



Existing Condition at 322 Central Park West.



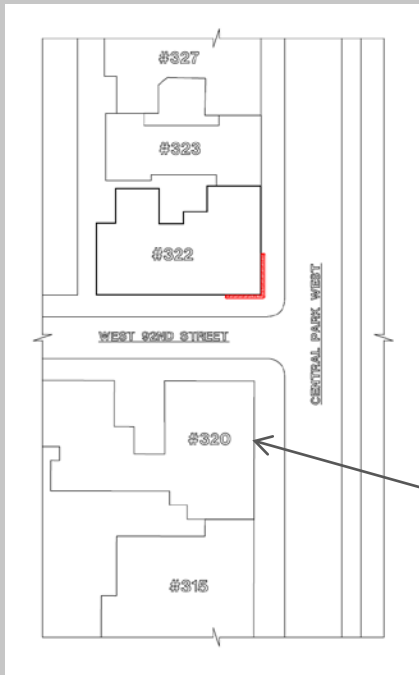
Planter Precedence -View of Central Park West Between 89th & 97th Streets. Circa 1925.



Neighboring Planters at 327 Central Park West.



Planter Precedence – Existing Neighboring Planters.



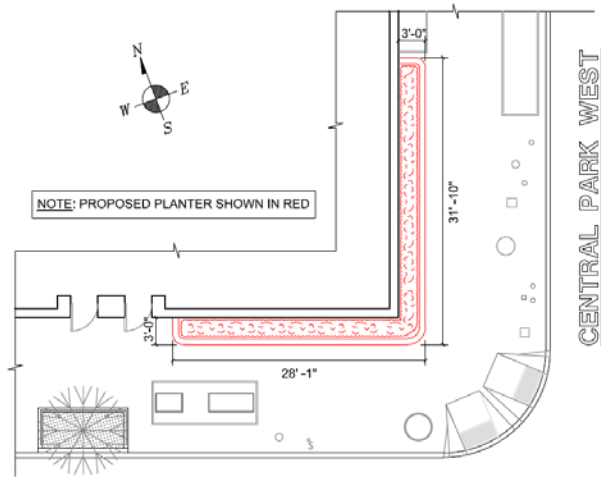
Neighboring Planters at 320 Central Park West.



Planter Precedence – Existing Neighboring Planters.



NOTE: PROPOSED PLANTER SHOWN IN RED

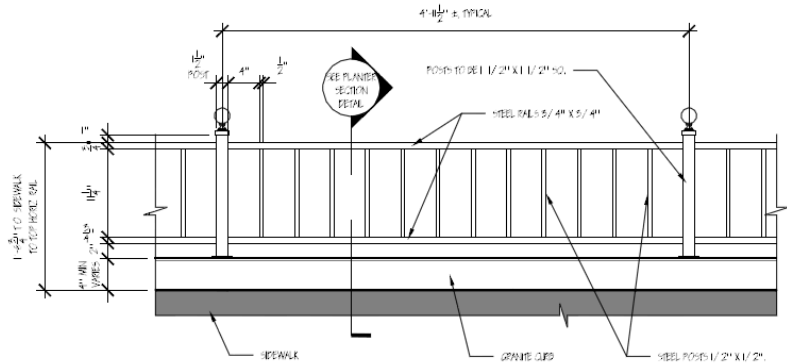


WEST 92ND STREET

SIDEWALK PLAN



MIDTOWN PRESERVATION
ARCHITECTURE & ENGINEERING, P.C.



PLANTER ELEVATION



MIDTOWN PRESERVATION
ARCHITECTURE & ENGINEERING, P.C.



Proposed planter curb material – ‘Woodbury/Mount Airy’ Granite to match building façade.