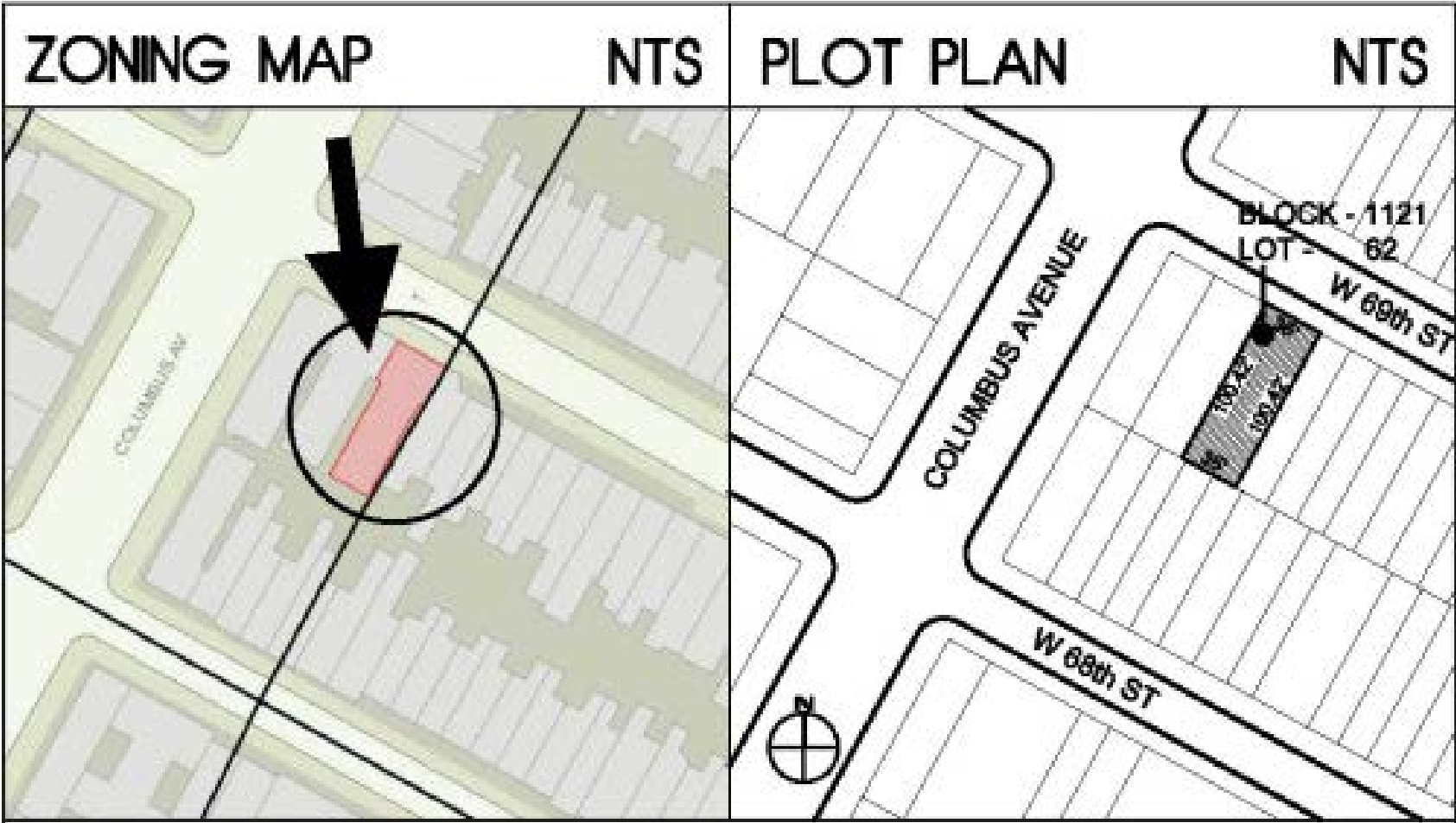


72 WEST 69TH ST
NEW YORK NY

HANDICAPPED
ACCESSIBLE LIFT
& METAL PLATFORM



ZONING NOTES

ADDRESS:	72 WEST 69 TH STREET, NEW YORK NY 10023
BLOCK:	1121
LOT:	62
ZONING MAP:	8C
PRIMARY ZONING:	C1-8A
ZONING OVERLAY:	NONE
SPECIAL DISTRICT:	UNKNOWN
COMMUNITY BOARD:	107
FLOOD ZONE:	BUILDING IS NOT IN A FLOOD ZONE
LANDMARK STATUS:	YES
BIN:	#1028481

**ZONING
INFORMATION**

KOHN

architecture

41 UNION SQUARE WEST,
SUITE #526
NEW YORK, NY 10003
TEL: (212) 889 0500
FAX: (212) 929 9776

ALL IDEAS, DESIGNS, ARRANGEMENTS AND
PLANS INDICATED OR REPRESENTED BY THIS
DRAWING ARE OWNED BY, AND ARE THE
EXCLUSIVE PROPERTY OF KOHN ARCHITECTURE
P.L.L.C. NONE OF SUCH IDEAS, DESIGNS,
ARRANGEMENTS OR PLANS SHALL BE USED BY
OR DISCLOSED TO ANY PERSON, FIRM OR
CORPORATION FOR ANY PURPOSE
WHATSOEVER WITHOUT THE WRITTEN PERMISSION
OF KOHN ARCHITECTURE P.L.L.C.



LOOKING EAST



STOREFRONT VIEW 1



LOOKING WEST



AREAWAY VIEW 1



AREAWAY VIEW 2



AREAWAY VIEW 3



STOREFRONT VIEW 2



72 WEST 69TH ST
NEW YORK NY

HANDICAPPED
ACCESSIBLE LIFT
& METAL PLATFORM

EXISTING
CONDITIONS

KOHN

architecture

41 UNION SQUARE, WEST,
SUITE #526
NEW YORK, NY 10003
TEL: (212) 889-0500
FAX: (212) 929-9778

ALL IDEAS, DESIGNS, ARRANGEMENTS AND
PLANS INDICATED OR REPRESENTED BY THIS
DRAWING ARE OWNED BY, AND ARE THE
EXCLUSIVE PROPERTY OF KOHN ARCHITECTURE
P.L.L.C. NONE OF SUCH IDEAS, DESIGNS,
ARRANGEMENTS OR PLANS SHALL BE USED BY
OR DISCLOSED TO ANY PERSON, FIRM OR
CORPORATION FOR ANY PURPOSE
WHATSOEVER WITHOUT THE WRITTEN PERMISSION
OF KOHN ARCHITECTURE P.L.L.C.

72 WEST 69th ST
NEW YORK, NY

HANDICAPPED
ACCESSIBLE LIFT &
METAL PLATFORM



FACADES - 72, 74 & 76 West 69th Street

KOHN

architecture

41 UNION SQUARE WEST,
SUITE 4020
NEW YORK, NY 10008
TEL (212) 684 0800
FAX (212) 629 0798

ALL IDEAS, DESIGNS, ARRANGEMENTS AND
PLANS INDICATED OR REPRESENTED BY THE
DRAWING ARE OWNED BY, AND ARE THE
EXCLUSIVE PROPERTY OF KOHN
ARCHITECTURE PLLC. NONE OF SUCH IDEAS,
DESIGNS, ARRANGEMENTS OR PLANS SHALL
BE USED BY OR DISCLOSED TO ANY
PERSON, FIRM OR CORPORATION FOR ANY
PURPOSE WHATSOEVER WITHOUT THE
WRITTEN PERMISSION OF KOHN
ARCHITECTURE PLLC.

72 WEST 69TH ST
NEW YORK NY

HANDICAPPED
ACCESSIBLE LIFT
& METAL PLATFORM



VIEW WITH TREE

PROPOSED LIFT
& PLATFORM VIEW

KOHN

architecture

41 UNION SQUARE WEST,
SUITE #526
NEW YORK, NY 10003
TEL: (212) 689 0500
FAX: (212) 929 9776

ALL IDEAS, DESIGNS, ARRANGEMENTS AND
PLANS INDICATED OR REPRESENTED BY THIS
DRAWING ARE OWNED BY, AND ARE THE
EXCLUSIVE PROPERTY OF KOHN ARCHITECTURE
P.L.L.C. NONE OF SUCH IDEAS, DESIGNS,
ARRANGEMENTS OR PLANS SHALL BE USED BY
OR DISCLOSED TO ANY PERSON, FIRM OR
CORPORATION FOR ANY PURPOSE
WHATSOEVER WITHOUT THE WRITTEN PERMISSION
OF KOHN ARCHITECTURE P.L.L.C.

**72 WEST 69TH ST
 NEW YORK NY**

**HANDICAPPED
 ACCESSIBLE LIFT
 & METAL PLATFORM**



VIEW WITHOUT TREE

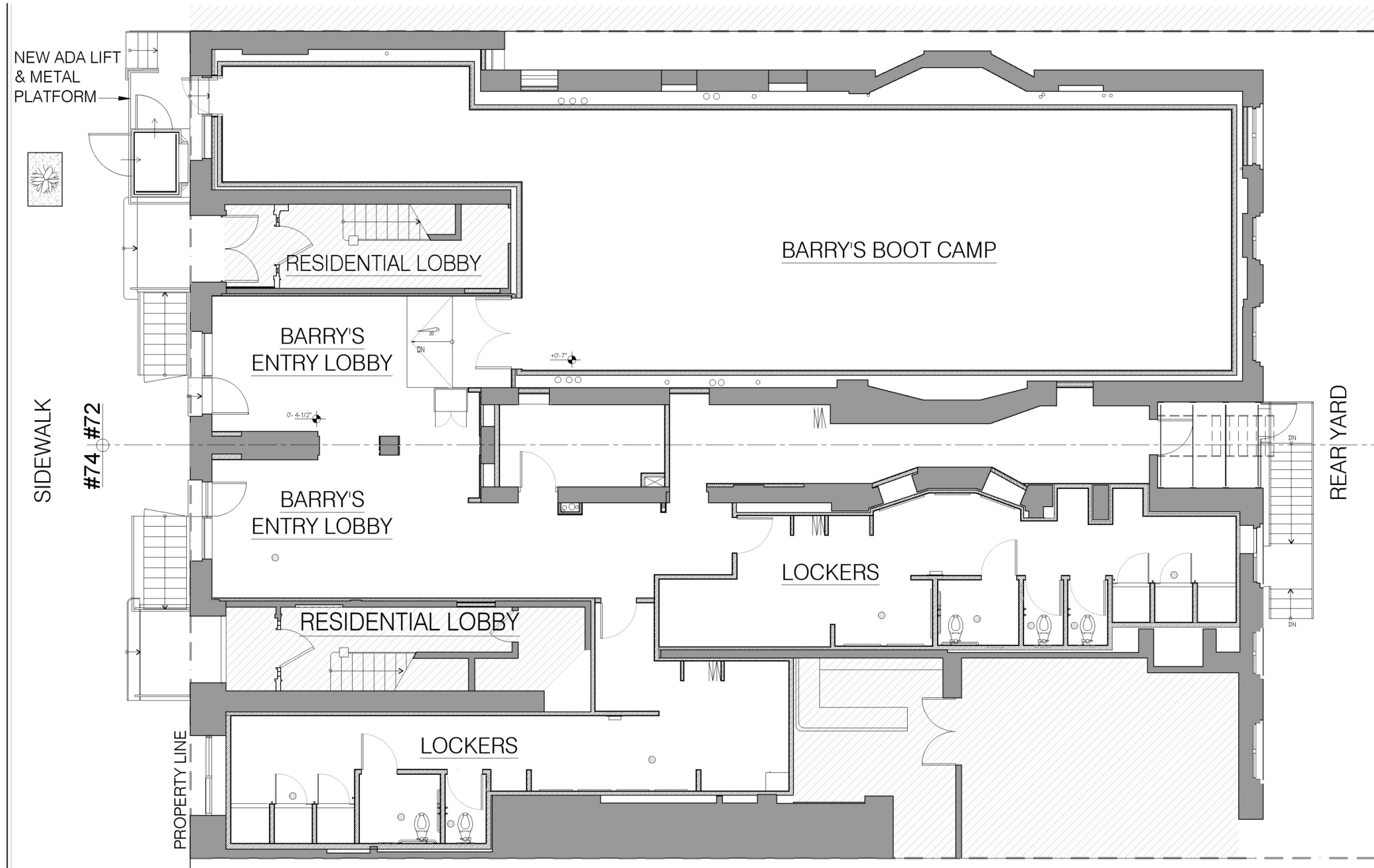
**PROPOSED LIFT
 & PLATFORM VIEW**

KOHN

architecture

41 UNION SQUARE WEST,
 SUITE #526
 NEW YORK, NY 10003
 TEL: (212) 689 0500
 FAX: (212) 929 9776

ALL IDEAS, DESIGNS, ARRANGEMENTS AND
 PLANS INDICATED OR REPRESENTED BY THIS
 DRAWING ARE OWNED BY, AND ARE THE
 EXCLUSIVE PROPERTY OF KOHN ARCHITECTURE
 PLLC. NONE OF SUCH IDEAS, DESIGNS,
 ARRANGEMENTS OR PLANS SHALL BE USED BY
 OR DISCLOSED TO ANY PERSON, FIRM OR
 CORPORATION FOR ANY PURPOSE
 WHATSOEVER WITHOUT THE WRITTEN PERMISSION
 OF KOHN ARCHITECTURE PLLC.



72 WEST 69th ST
NEW YORK, NY

HANDICAPPED
ACCESSIBLE LIFT
& METAL
PLATFORM

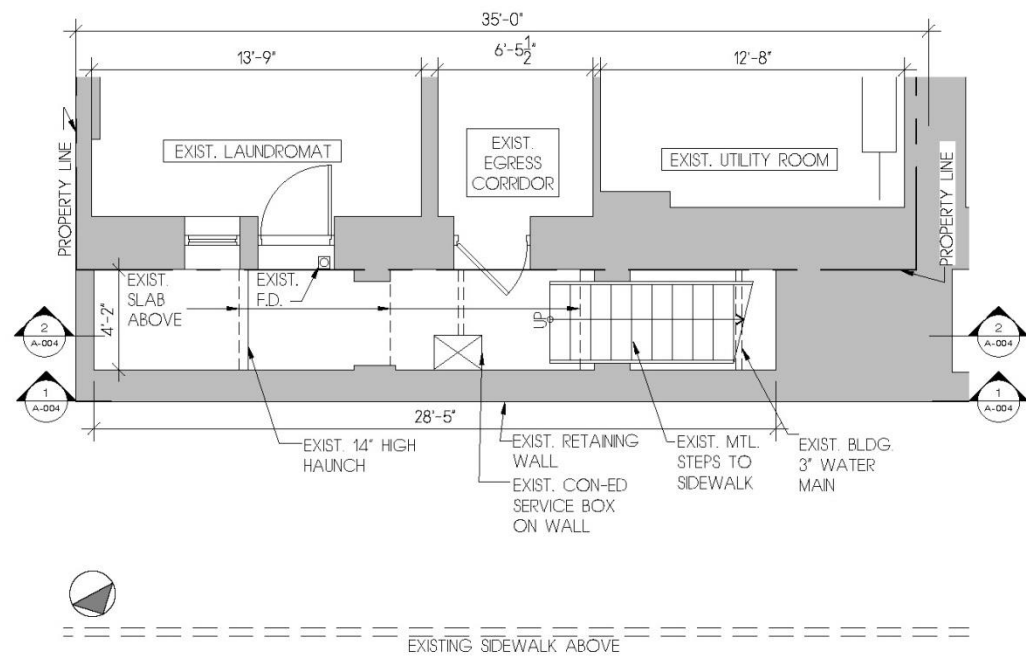
KOHN
architecture

48 UNION SQUARE WEST,
SUITE #502
NEW YORK, NY 10003
TEL (212) 869-0500
FAX (212) 929-9778

ALL IDEAL DESIGN ARRANGEMENTS AND
PLANS INDICATED OR REPRESENTED BY THE
DRAWING ARE OWNED BY, AND ARE THE
EXCLUSIVE PROPERTY OF KOHN
ARCHITECTURE PLLC. NONE OF SUCH IDEAL
DESIGN ARRANGEMENTS OR PLANS SHALL
BE USED BY OR DISCLOSED TO ANY
PERSON, FIRM OR CORPORATION FOR ANY
PURPOSE WHATSOEVER WITHOUT THE
WRITTEN PERMISSION OF KOHN
ARCHITECTURE PLLC.

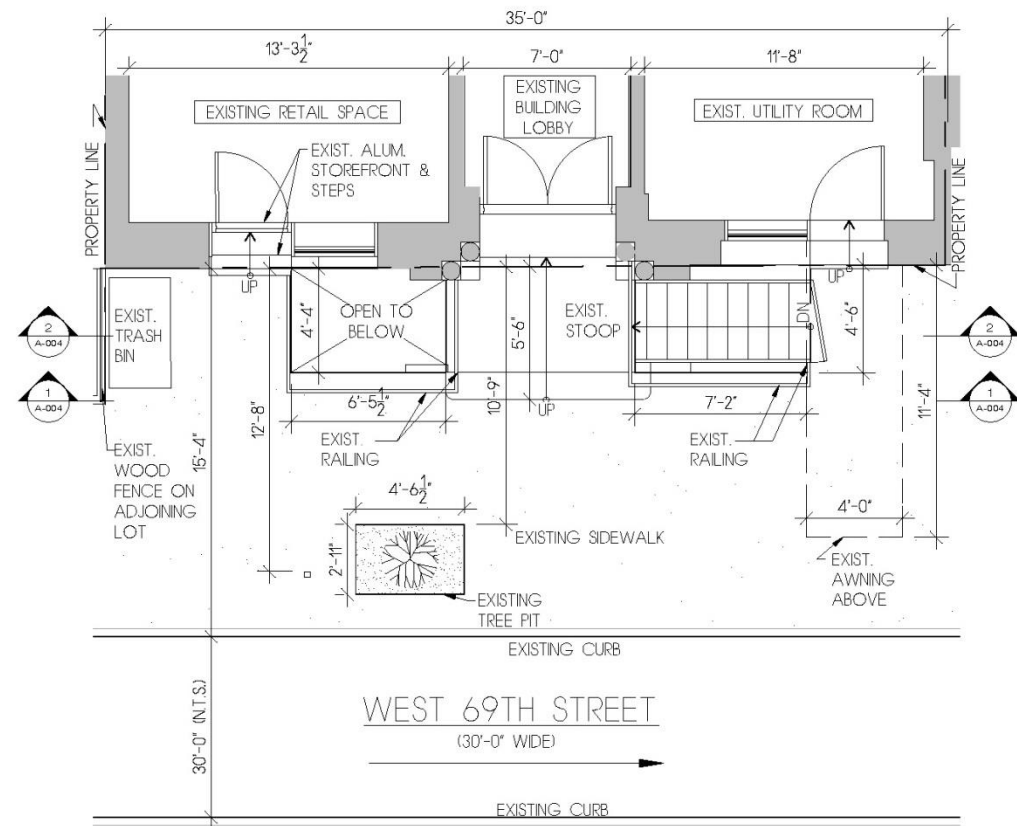
**72 WEST 69TH ST
NEW YORK NY**

**HANDICAPPED
ACCESSIBLE LIFT
& METAL PLATFORM**



1 EXISTING CELLAR LEVEL PLAN

SCALE : 1/4" = 1'-0"



2 EXISTING FIRST FLOOR PLAN

SCALE : 1/4" = 1'-0"

LEGEND	
	EXISTING STREET SIGN
	EXISTING TREE W/ PIT
	EXISTING FLOOR DRAIN
	PROPERTY LINE
	ELEVATION
	SECTION

KOHN

architecture

41 UNION SQUARE WEST,
SUITE #506
NEW YORK, NY 10003
TEL: (212) 689-6500
FAX: (212) 929-7718

ALL IDEAS, DESIGNS, ARRANGEMENTS AND PLANS REVEALED OR REPRESENTED BY THIS DRAWING ARE OWNED BY, AND ARE THE EXCLUSIVE PROPERTY OF KOHN ARCHITECTURE PLLC. NONE OF SUCH IDEAS, DESIGNS, ARRANGEMENTS OR PLANS SHALL BE USED BY OR DISCLOSED TO ANY PERSON, FIRM OR CORPORATION FOR ANY PURPOSE WHATSOEVER WITHOUT THE WRITTEN PERMISSION OF KOHN ARCHITECTURE PLLC.

HANDICAP
ACCESSIBLE LIFT
& METAL
PLATFORM



3 INCLINED LIFT - EXAMPLE

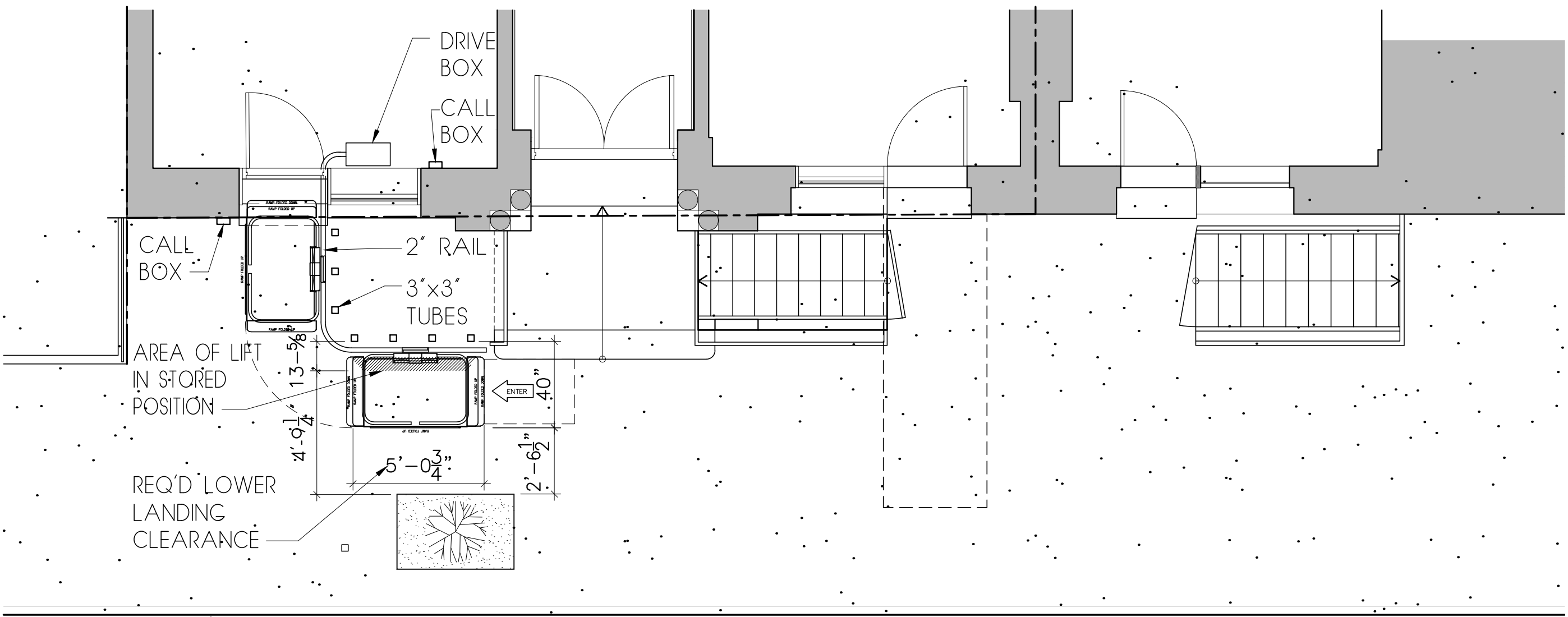
SCALE : N.T.S.

KOHN

architecture

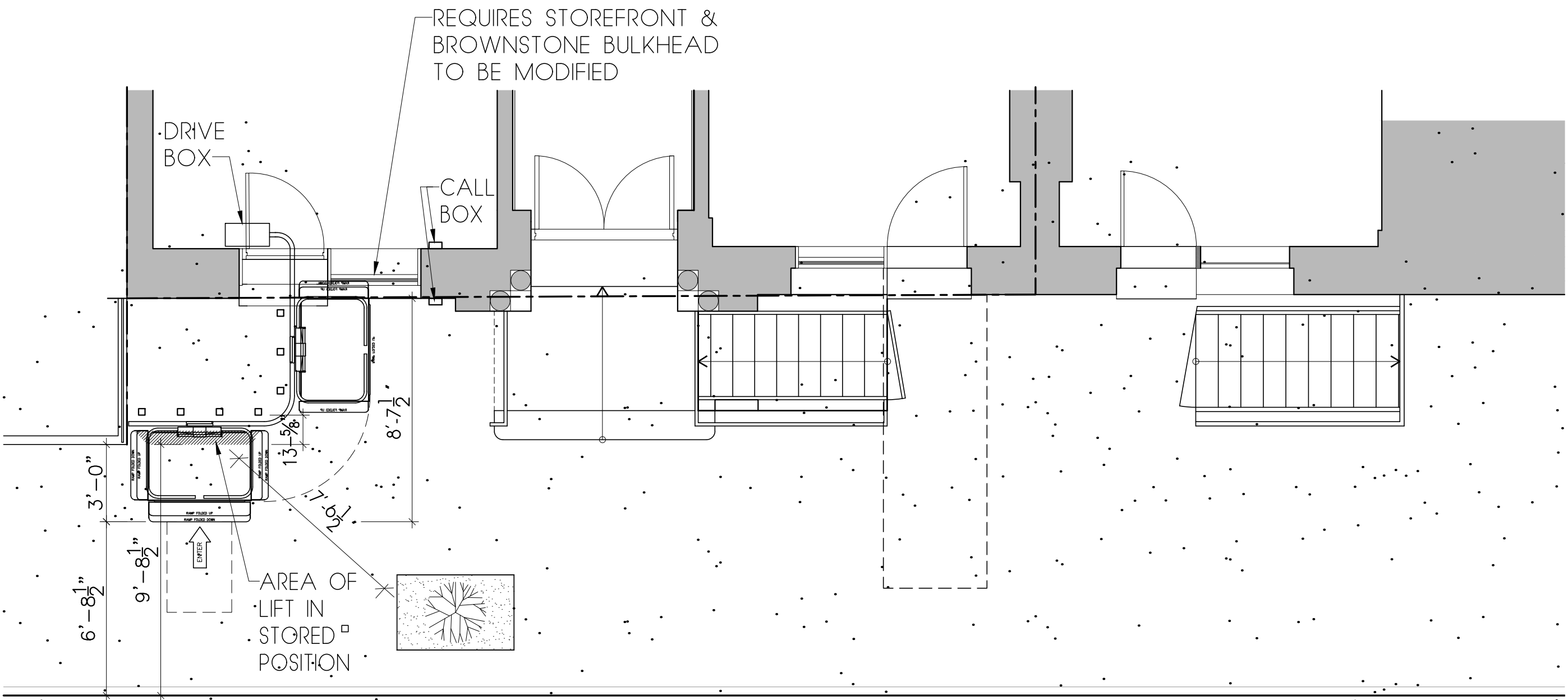
41 UNION SQUARE WEST,
SUITE #502
NEW YORK, NY 10003
TEL: (212) 689 0500
FAX: (212) 929 9718

ALL IDEAS, DESIGNS, ARRANGEMENTS AND
PLANS INDICATED OR REPRESENTED BY THE
DRAWING ARE OWNED BY, AND ARE THE
EXCLUSIVE PROPERTY OF, KOHN
ARCHITECTURE PLLC. NONE OF SUCH IDEAS,
DESIGNS, ARRANGEMENTS OR PLANS SHALL
BE USED BY OR DISCLOSED TO ANY
PERSON, FIRM OR CORPORATION FOR ANY
PURPOSE WHATSOEVER WITHOUT THE
WRITTEN PERMISSION OF KOHN
ARCHITECTURE PLLC.



1 INCLINED LIFT WITH CURVE - A

SCALE : 1/4" = 1'-0"

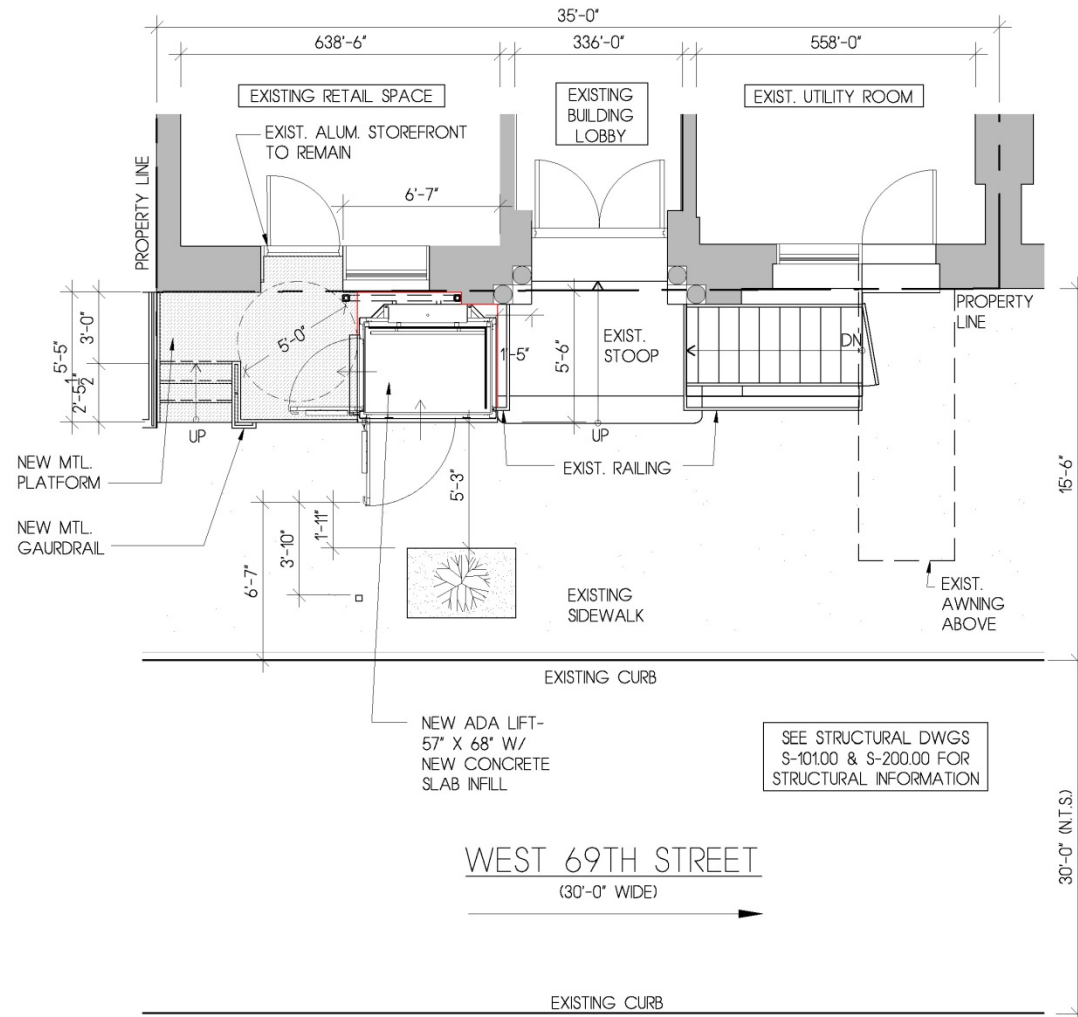
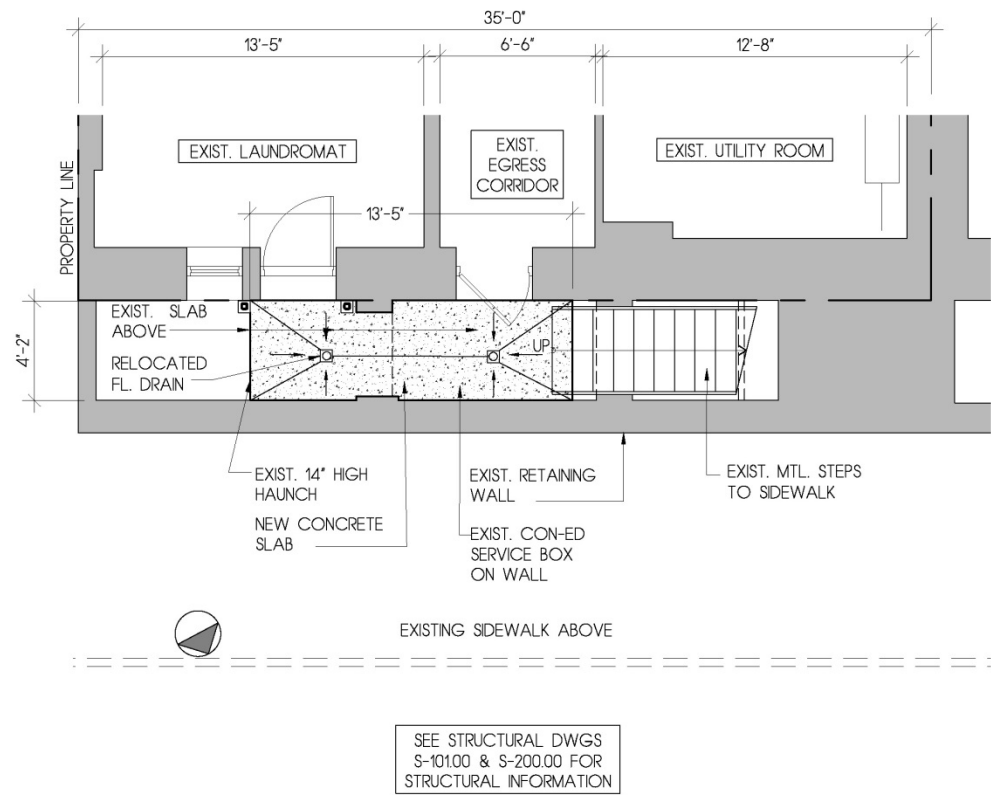


2 INCLINED LIFT WITH CURVE - B

SCALE : 1/4" = 1'-0"

**72 WEST 69TH ST
NEW YORK NY**

**HANDICAPPED
ACCESSIBLE LIFT
& METAL PLATFORM**



1 PROPOSED CELLAR LEVEL PLAN
SCALE : 1/4" = 1'-0"

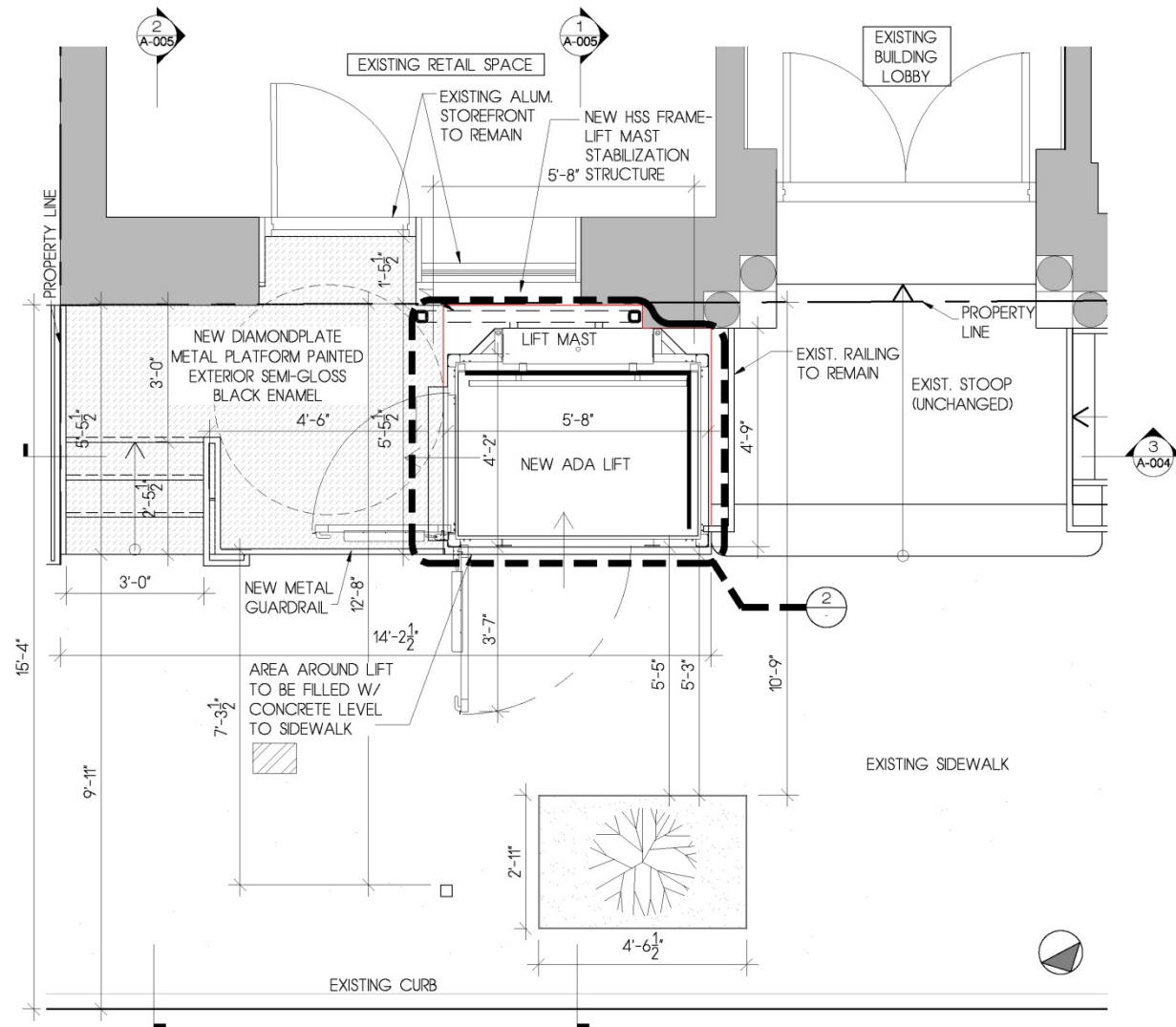
LEGEND	
	EXISTING STREET SIGN
	EXISTING TREE W/ PIT
	EXISTING RELOCATED FLOOR DRAIN
	PROPERTY LINE

2 PROPOSED FIRST FLOOR PLAN
SCALE : 1/4" = 1'-0"

KOHN
architecture

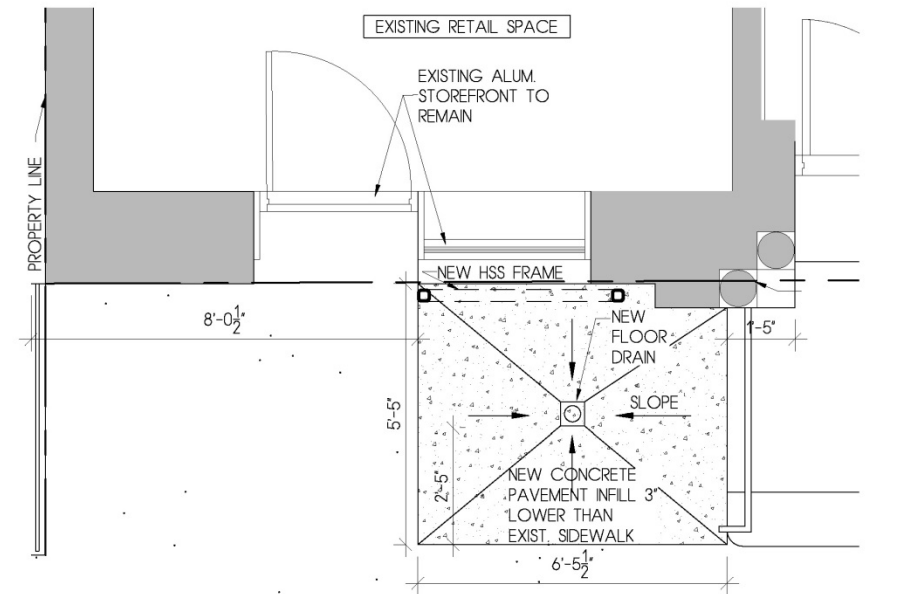
41 UNION SQUARE WEST,
SUITE #505
NEW YORK, NY 10003
TEL: (212) 699-0500
FAX: (212) 929-9778

ALL IDEAS, DESIGNS, ARRANGEMENTS AND PLANS INDICATED OR REPRESENTED BY THIS DRAWING ARE OWNED BY, AND ARE THE EXCLUSIVE PROPERTY OF KOHN ARCHITECTURE PLLC. NONE OF SUCH IDEAS, DESIGNS, ARRANGEMENTS OR PLANS SHALL BE USED BY OR DISCLOSED TO ANY PERSON, FIRM OR CORPORATION FOR ANY PURPOSE WHATSOEVER WITHOUT THE WRITTEN PERMISSION OF KOHN ARCHITECTURE PLLC.



1 PROPOSED FIRST FLOOR PLAN- ADA LIFT

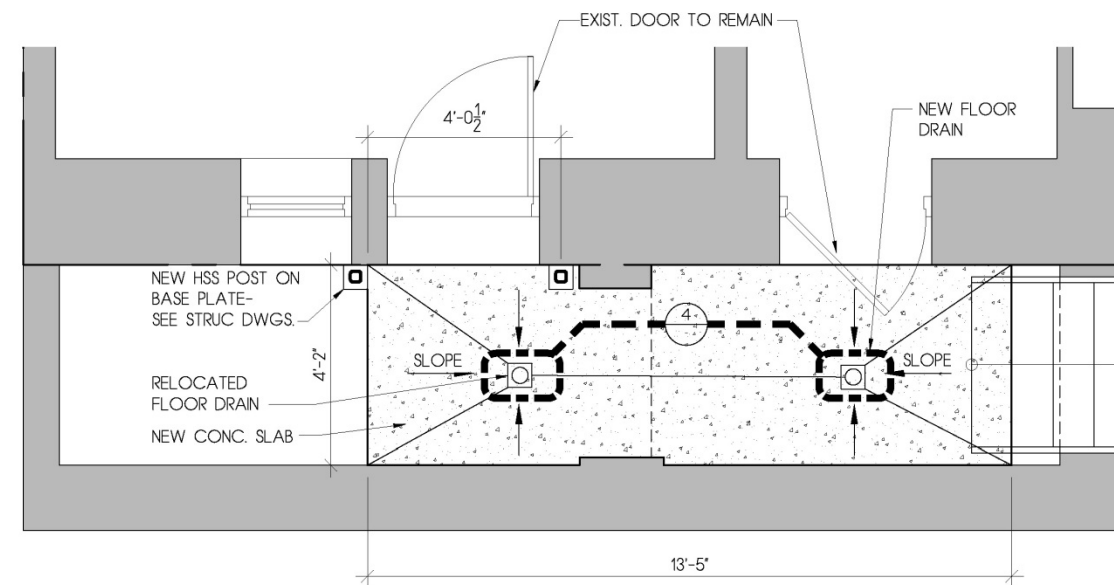
SCALE : 1/2" = 1'-0"



2 PROPOSED FIRST FLOOR PLAN- SLAB

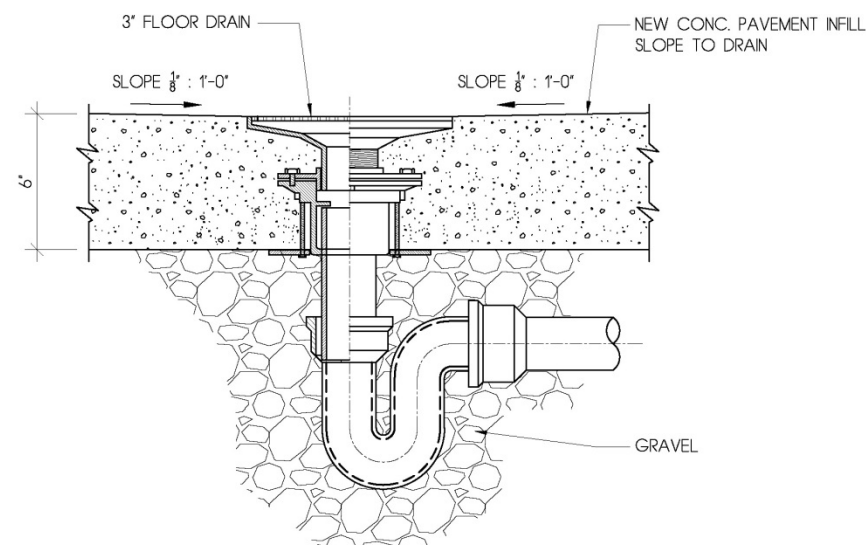
SCALE : 1/2" PROPERTY LINE

LEGEND	
	EXISTING STREET SIGN
	EXISTING TREE W/ PIT
	EXISTING FLOOR DRAIN
	PROPERTY LINE
	ELEVATION
	SECTION
	AREA TO BE DETAILED
	DETAIL



3 PROPOSED CELLAR PLAN

SCALE : 1/2" = 1'-0"

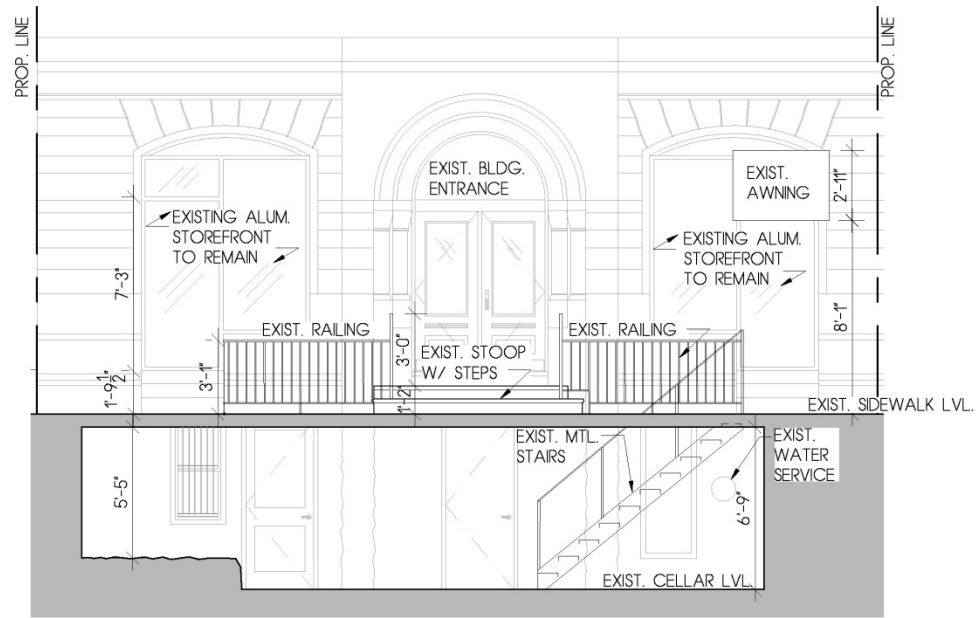


4 FLOOR DRAIN DETAIL

SCALE : 1-1/2" = 1'-0"

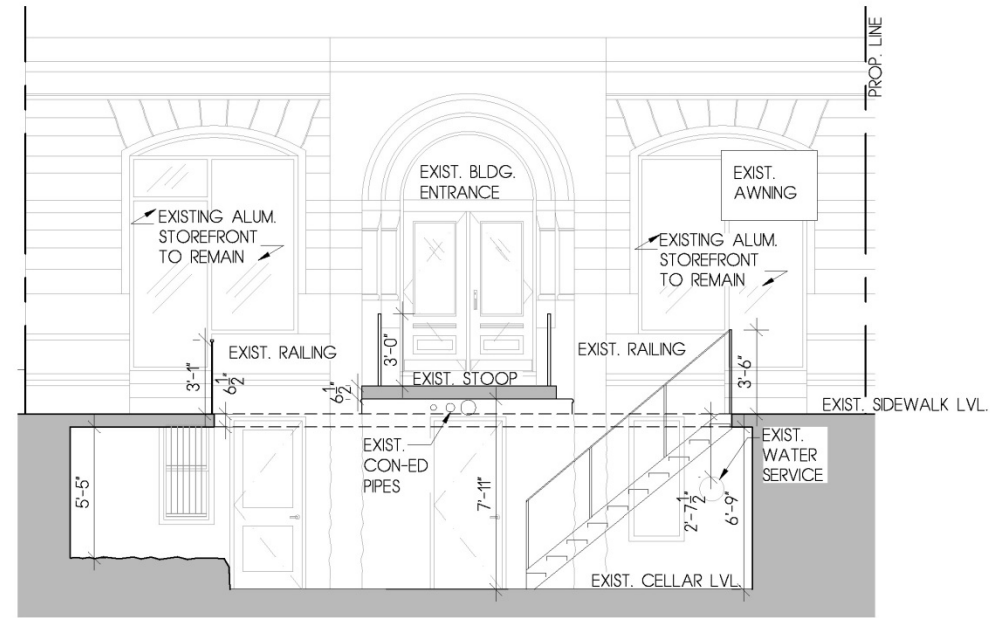
**72 WEST 69TH ST
NEW YORK NY**

**HANDICAPPED
ACCESSIBLE LIFT
& METAL PLATFORM**



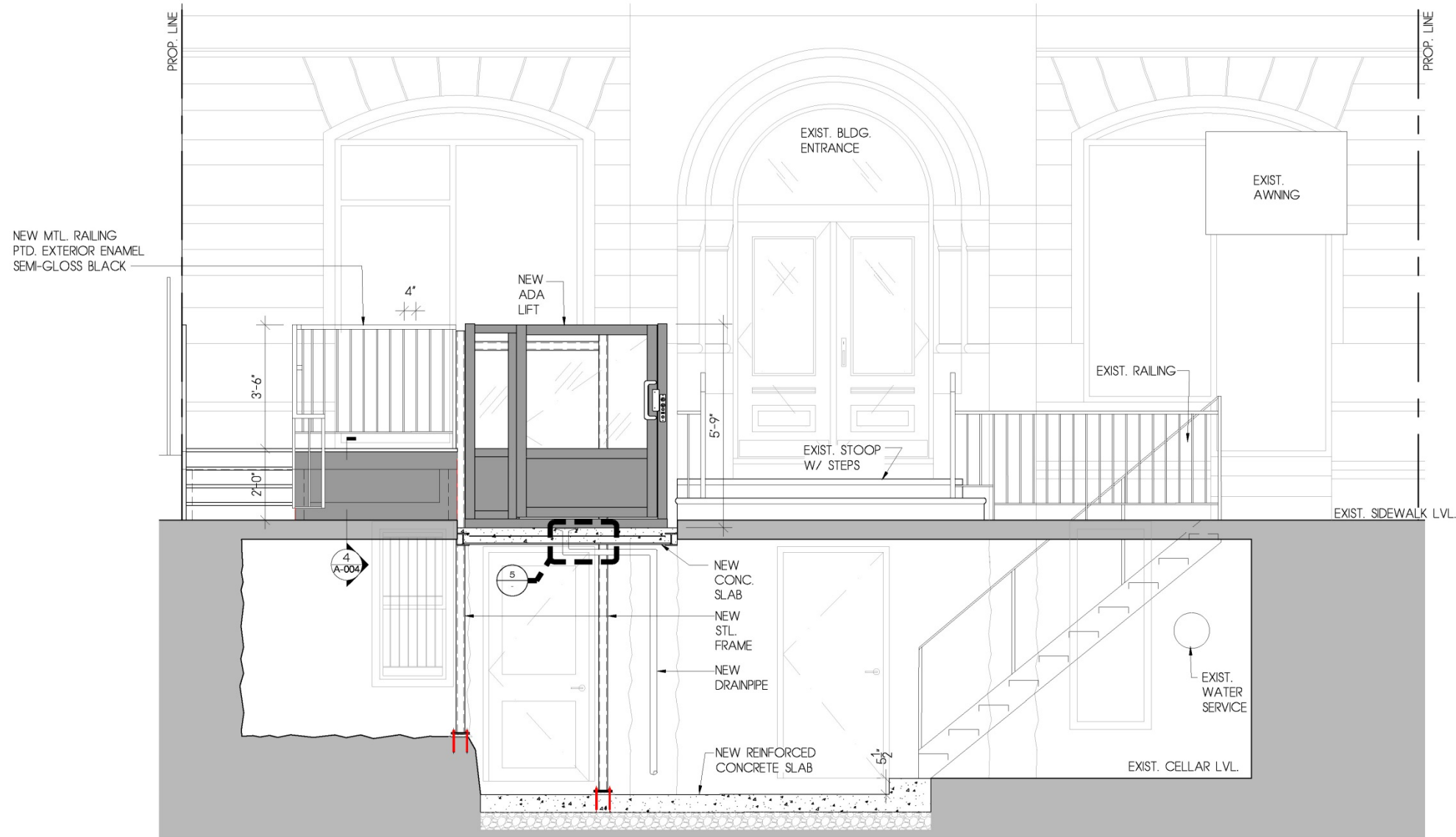
1 EXISTING ELEVATION -A

SCALE : 1/4" = 1'-0"



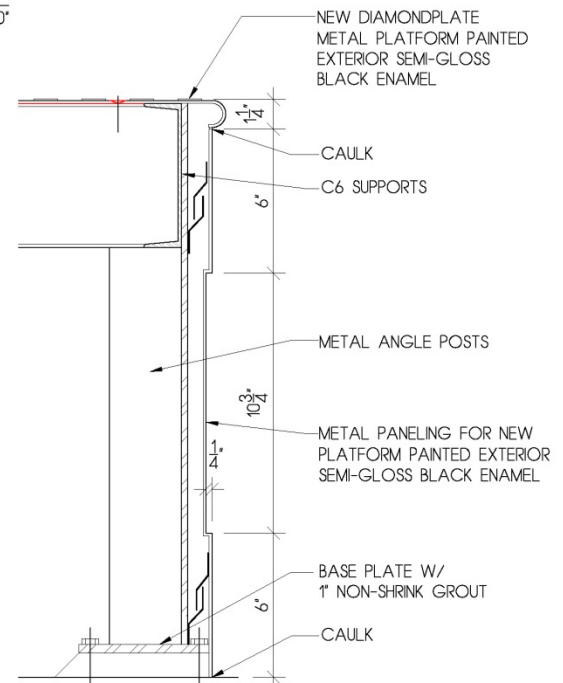
2 EXISTING ELEVATION -B

SCALE : 1/4" = 1'-0"



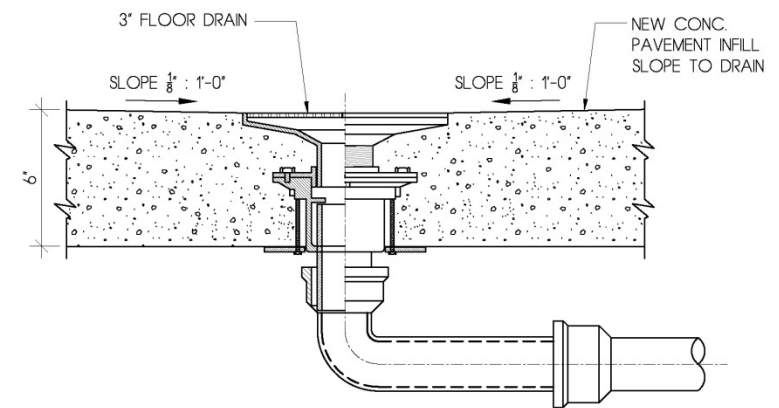
3 PROPOSED ELEVATION -C

SCALE : 1/2" = 1'-0"



4 FRONT PANEL DETAIL

SCALE : 3" = 1'-0"



5 DRAIN DETAIL @ SIDEWALK LEVEL

SCALE : 3" = 1'-0"

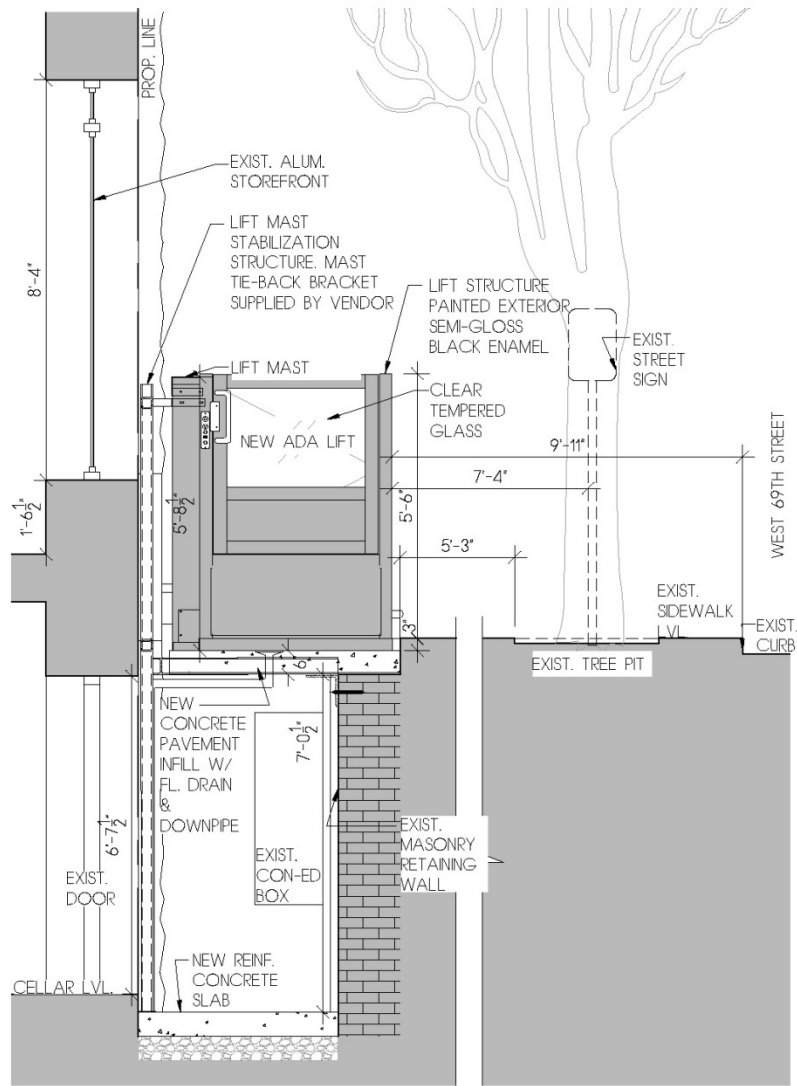
KOHN
architecture

41 UNION SQUARE WEST,
SUITE #525
NEW YORK, NY 10003
TEL: (212) 689-0500
FAX: (212) 929-9778

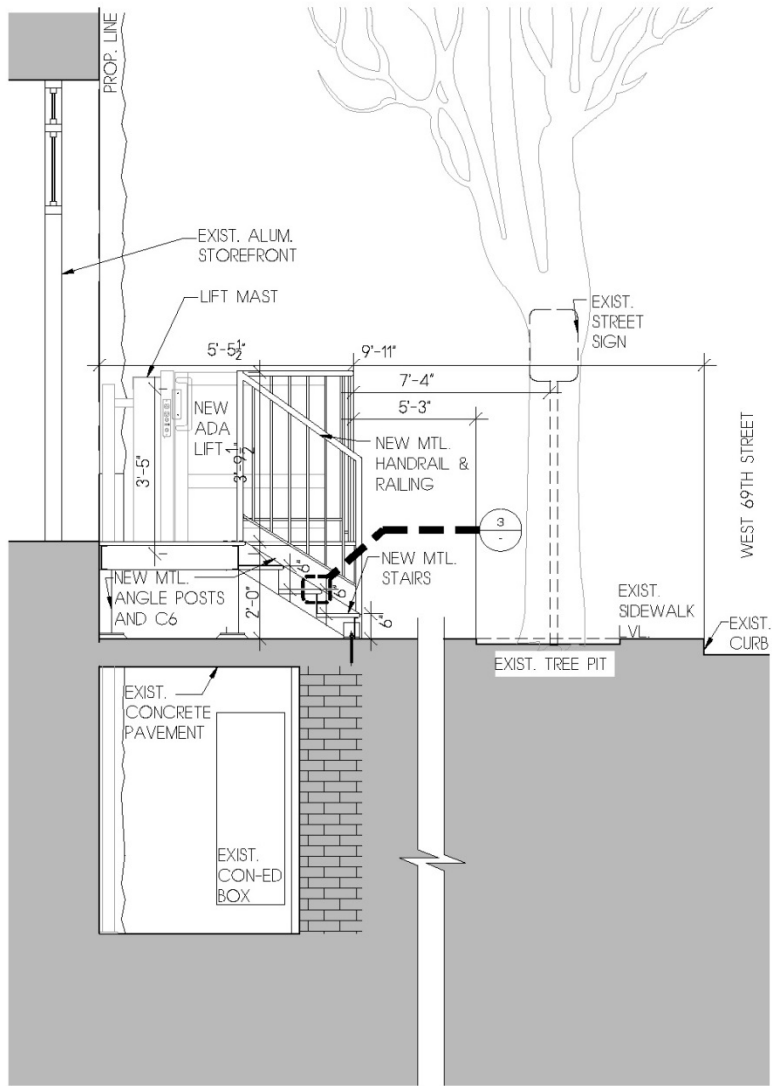
ALL IDEAS, DESIGNS, ARRANGEMENTS AND
PLANS INDICATED OR REPRESENTED BY THIS
DRAWING ARE OWNED BY, AND ARE THE
EXCLUSIVE PROPERTY OF KOHN ARCHITECTURE
P.L.L.C. NONE OF SUCH IDEAS, DESIGNS,
ARRANGEMENTS OR PLANS SHALL BE USED BY
OR DISCLOSED TO ANY PERSON, FIRM OR
CORPORATION FOR ANY PURPOSE
WHATSOEVER WITHOUT THE WRITTEN PERMISSION
OF KOHN ARCHITECTURE P.L.L.C.

**72 WEST 69TH ST
NEW YORK NY**

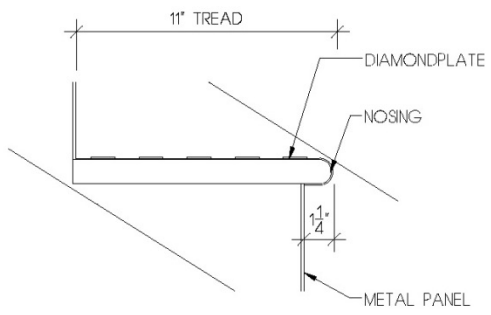
**HANDICAPPED
ACCESSIBLE LIFT
& METAL PLATFORM**



1 PROPOSED SECTION-1
SCALE : 1/2" = 1'-0"



2 PROPOSED SECTION-2
SCALE : 1/2" = 1'-0"



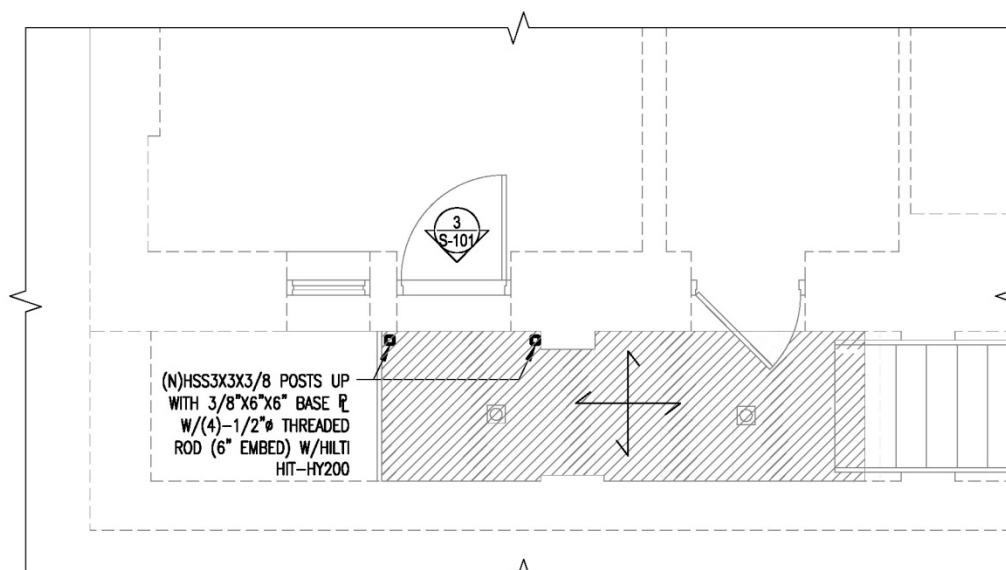
3 NOSING DETAIL
SCALE : 3" = 1'-0"

KOHN

architecture

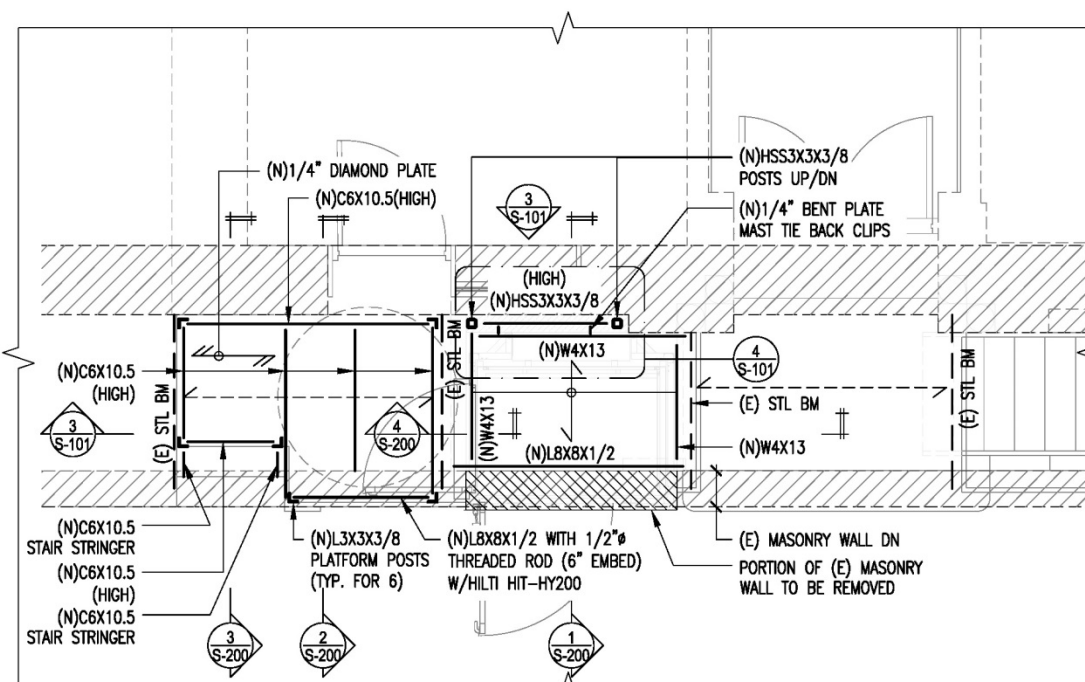
41 UNION SQUARE WEST,
SUITE #526
NEW YORK, NY 10003
TEL: (212) 889-6500
FAX: (212) 929-9798

ALL IDEAS, DESIGNS, ARRANGEMENTS AND
PLANS INDICATED OR REPRESENTED BY THIS
DRAWING ARE OWNED BY, AND ARE THE
EXCLUSIVE PROPERTY OF KOHN ARCHITECTURE
P.L.L.C. NONE OF SUCH IDEAS, DESIGNS,
ARRANGEMENTS OR PLANS SHALL BE USED BY
OR DISCLOSED TO ANY PERSON, FIRM OR
CORPORATION FOR ANY PURPOSE
WHATSOEVER WITHOUT THE WRITTEN PERMISSION
OF KOHN ARCHITECTURE P.L.L.C.



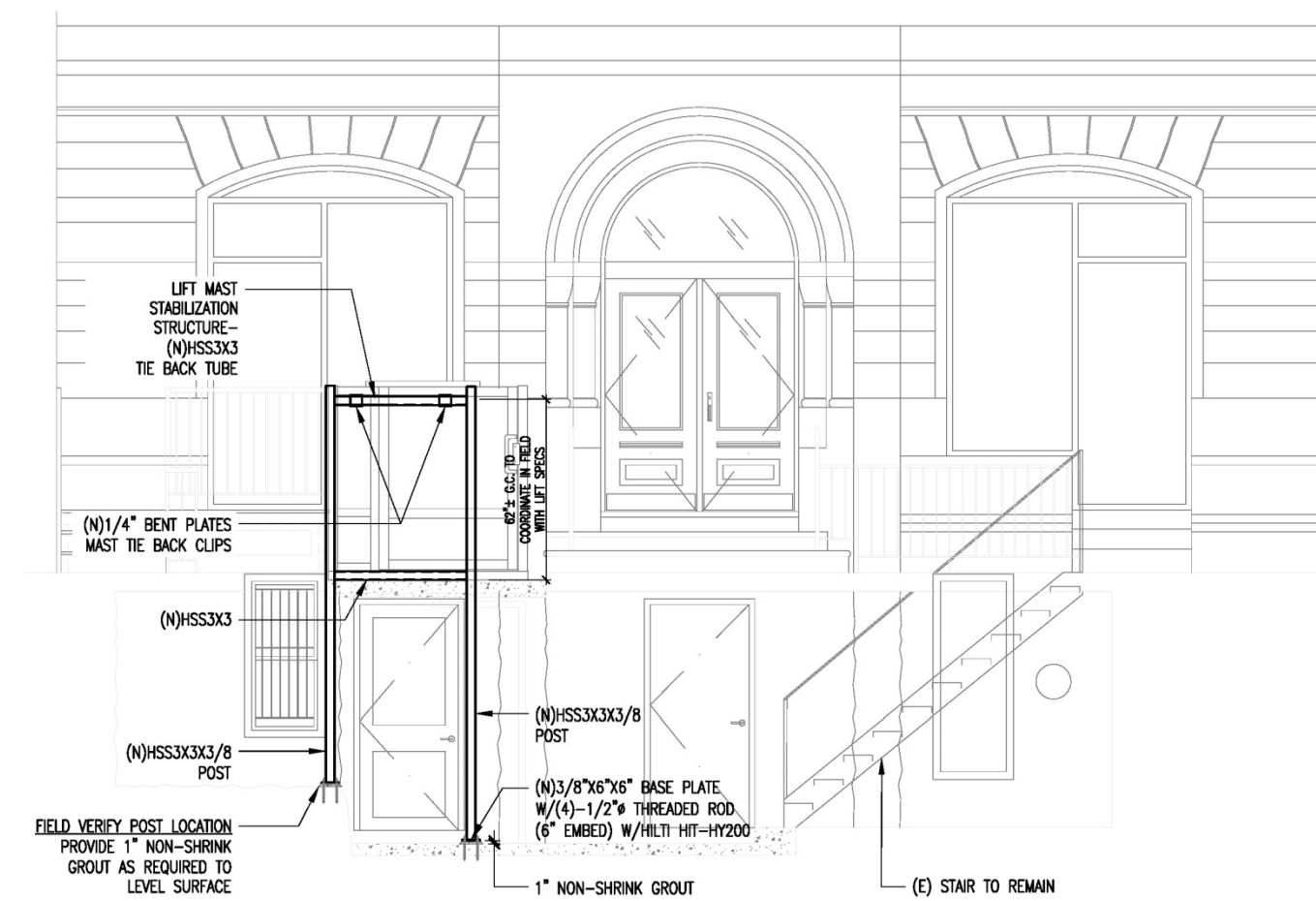
1 PARTIAL CELLAR FRAMING PLAN

SCALE: 3/8"=1'-0"



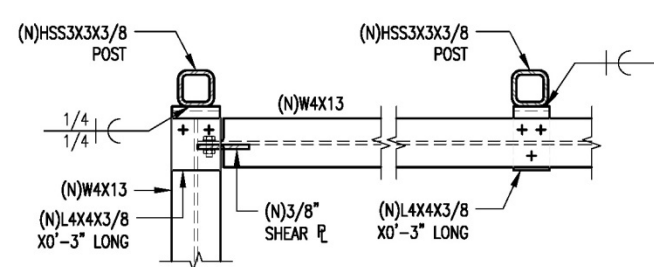
2 PARTIAL FIRST FLOOR FRAMING PLAN

SCALE: 3/8"=1'-0"



3 ELEVATION / SECTION

SCALE: 3/8"=1'-0"



4 PLAN VIEW DETAIL

SCALE: 1 1/2"=1'-0"

LEGEND:

- DENOTES EXISTING FRAMING ELEMENT.
- DENOTES NEW STEEL FRAMING ELEMENT.
- - - - - DENOTES EXISTING CONCRETE SLAB.
- DENOTES NEW 18 GA UFS FORM DECK WITH NORMAL WEIGHT CONCRETE TOPPING (TOTAL DEPTH = 6") WITH #4 EPOXY COATED REBARS @ 8"o.c. EACH WAY.
- DENOTES NEW 6" CONCRETE SLAB ON GRADE WITH ONE LAYER 6X6-W1.4XW1.4 W.W.F. BY USD OR APPROVED EQUAL U.N.O. OVER 6" GRAVEL.



72 WEST 69TH ST
NEW YORK NY

HANDICAPPED
ACCESSIBLE LIFT
& METAL PLATFORM

KOHN
architecture

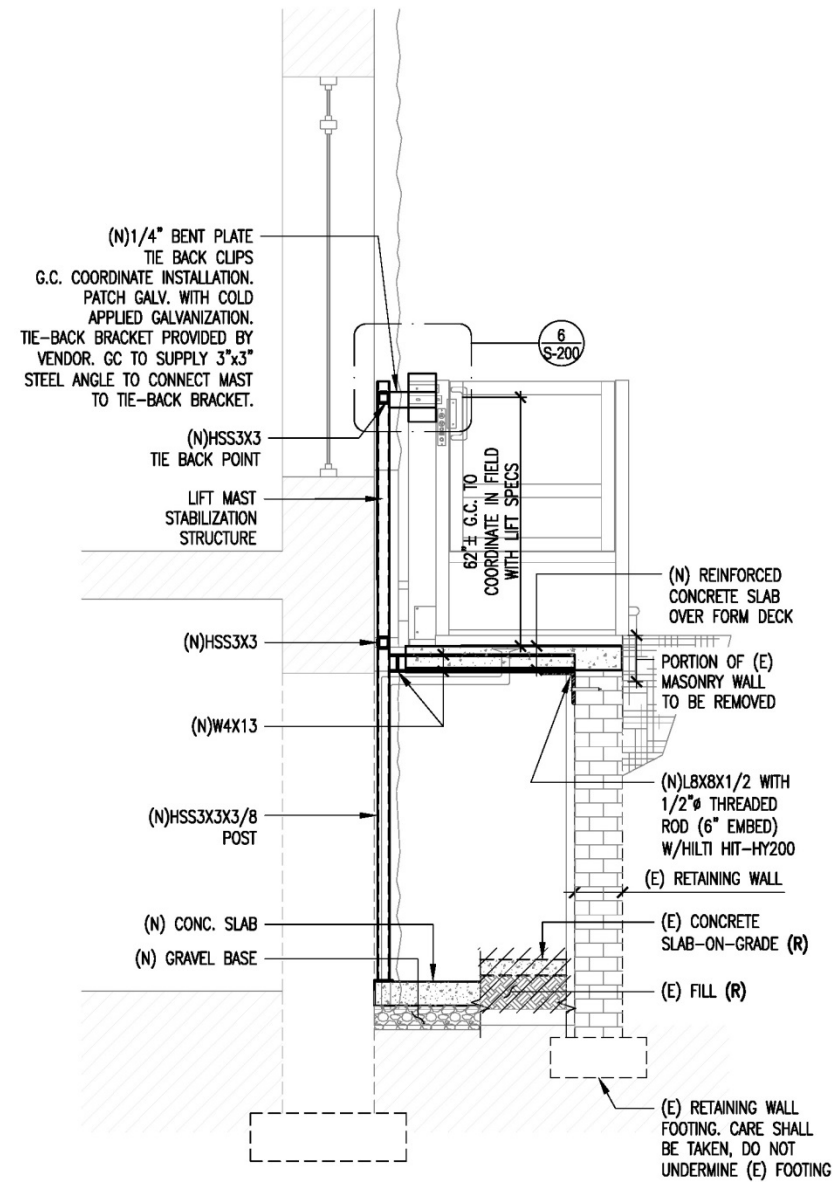
411 UNION SQUARE WEST,
SUITE 450
NEW YORK, NY 10003
TEL: (212) 869-6000
FAX: (212) 929-5798

ALL IDEAS, DESIGNS, ARRANGEMENTS AND PLANS RECALCULATED OR REPRESENTED BY THIS DRAWING ARE OWNED BY, AND ARE THE EXCLUSIVE PROPERTY OF KOHN ARCHITECTURE, P.L.L.C. NONE OF SUCH IDEAS, DESIGNS, ARRANGEMENTS OR PLANS SHALL BE USED BY OR DISCLOSED TO ANY PERSON, FIRM OR CORPORATION FOR ANY PURPOSE WHATSOEVER WITHOUT THE WRITTEN PERMISSION OF KOHN ARCHITECTURE, P.L.L.C.

WARNING: IT IS A VIOLATION OF THE NEW YORK STATE EDUCATION LAW FOR ANY PERSON, UNLESS ACTING UNDER THE DIRECTION OF A LICENSED PROFESSIONAL ENGINEER, TO ALTER ANY ITEM ON THESE PLANS IN ANY WAY. IF ALTERATIONS TO THESE PLANS ARE MADE, THE ALTERATIONS SHALL BE MADE IN ACCORDANCE WITH ARTICLE 145 - SUBSECTION 7209 OF THE NEW YORK STATE EDUCATION LAW. IF ANY ITEM BEARING THE SEAL OF AN ENGINEER IS ALTERED, THE ALTERING ENGINEER SHALL AFFIX TO THE ITEM HIS SEAL AND THE NOTATION "ALTERED BY" FOLLOWED BY HIS SIGNATURE AND THE DATE OF SUCH ALTERATION, AND A SPECIFIC DESCRIPTION OF THE ALTERATION.

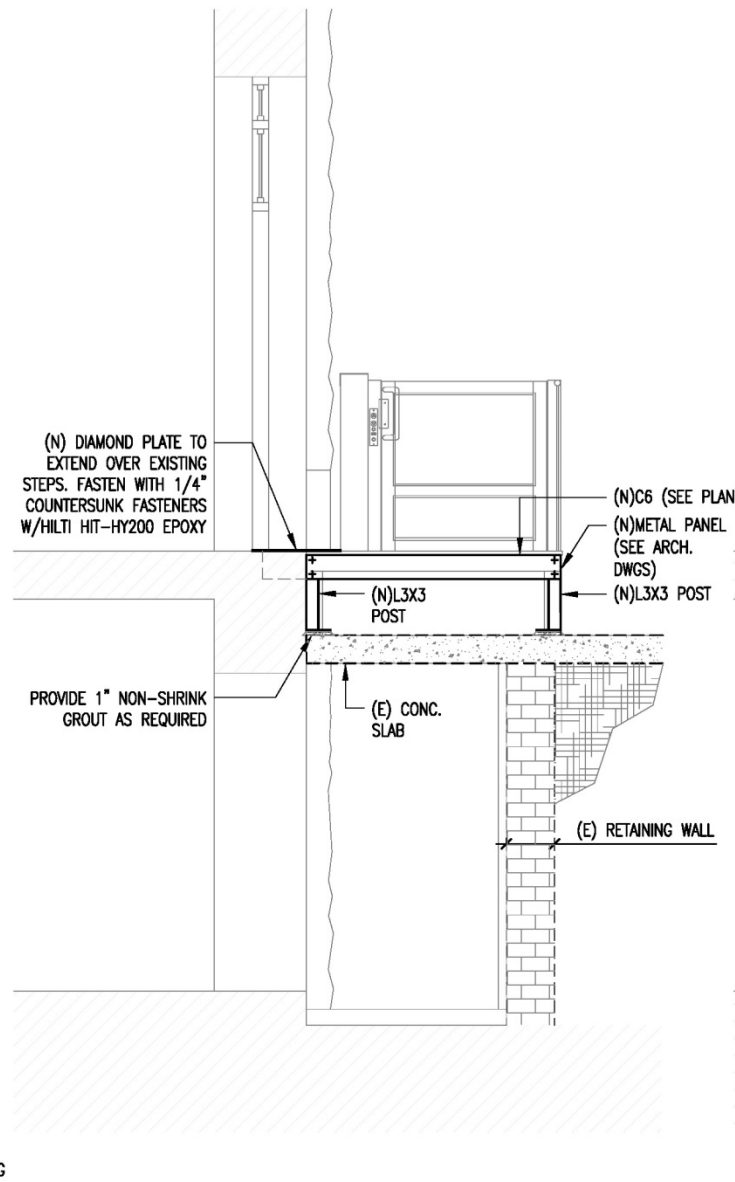
**72 WEST 69TH ST
NEW YORK NY**

**HANDICAPPED
ACCESSIBLE LIFT
& METAL PLATFORM**



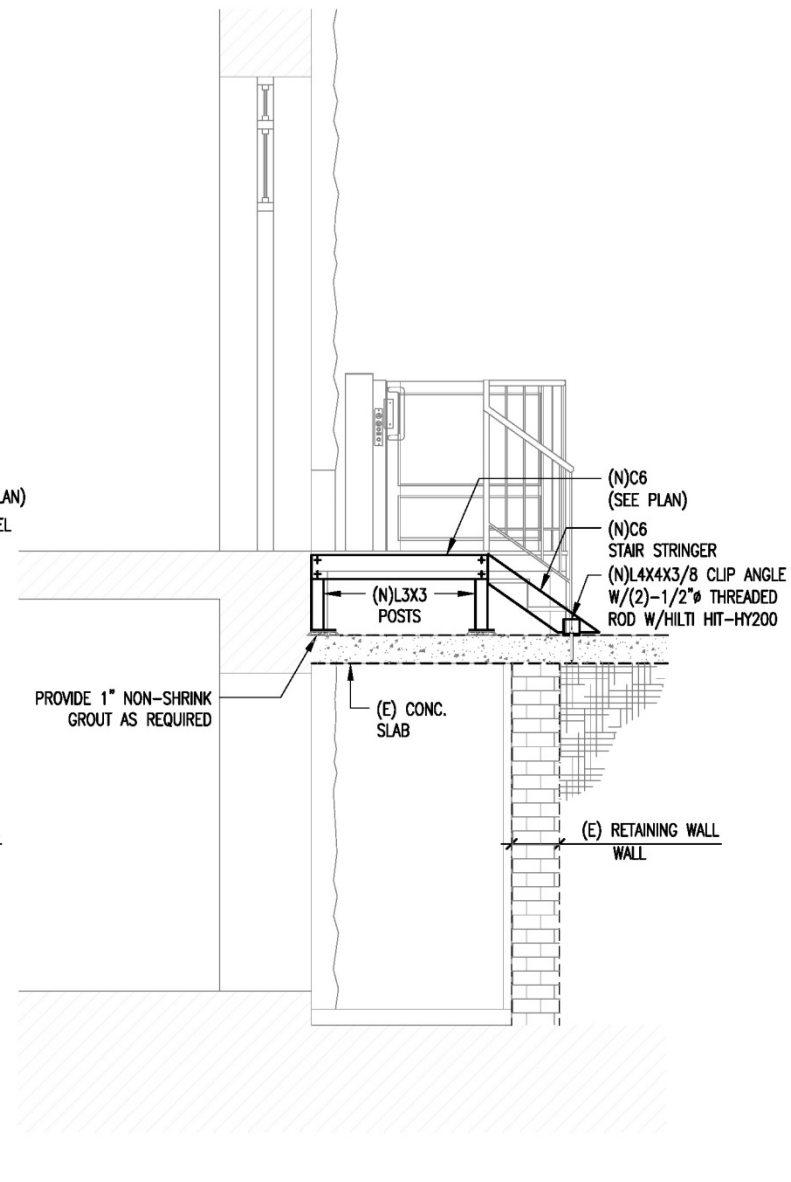
1 SECTION

SCALE: 1/2"=1'-0"



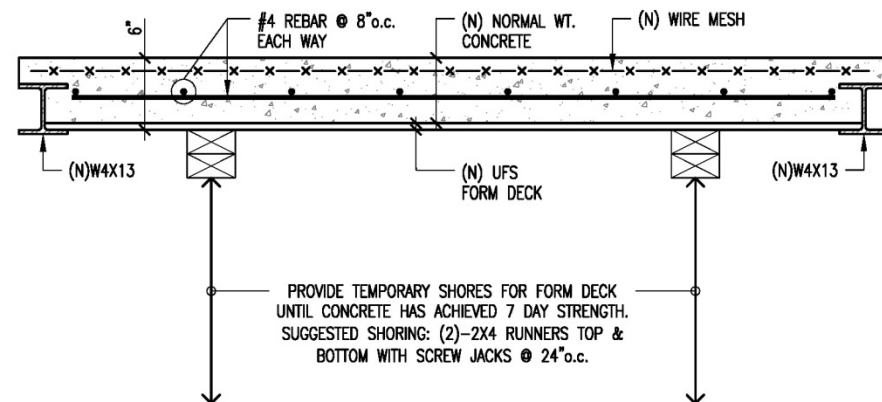
2 SECTION

SCALE: 1/2"=1'-0"



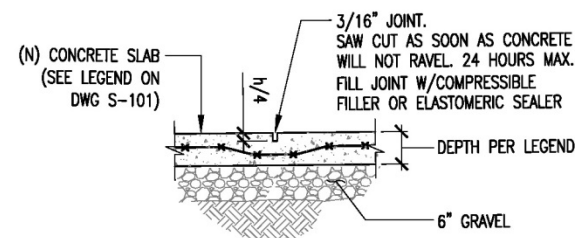
3 SECTION

SCALE: 1/2"=1'-0"



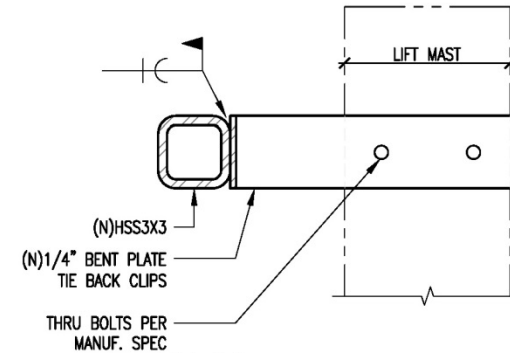
4 SECTION

SCALE: 1 1/2"=1'-0"



5 TYP. SLAB-ON-GRADE DETAIL

SCALE: 3/4"=1'-0"



6 DETAIL

SCALE: 3/4"=1'-0"

WARNING: IT IS A VIOLATION OF THE NEW YORK STATE EDUCATION LAW FOR ANY PERSON, UNLESS ACTING UNDER THE DIRECTION OF A LICENSED PROFESSIONAL ENGINEER, TO ALTER ANY ITEM ON THESE PLANS IN ANY WAY. IF ALTERATIONS TO THESE PLANS ARE MADE, THE ALTERATIONS SHALL BE MADE IN ACCORDANCE WITH ARTICLE 145 - SUBSECTION 7209 OF THE NEW YORK STATE EDUCATION LAW. IF ANY ITEM BEARING THE SEAL OF AN ENGINEER IS ALTERED, THE ALTERING ENGINEER SHALL AFFIX TO THE ITEM HIS SEAL AND THE NOTATION "ALTERED BY" FOLLOWED BY HIS SIGNATURE AND THE DATE OF SUCH ALTERATION, AND A SPECIFIC DESCRIPTION OF THE ALTERATION.

KOHN

architecture

411 UNION SQUARE WEST,
SUITE 450
NEW YORK, NY 10003
TEL: (212) 697-0000
FAX: (212) 697-0700

ALL IDEAS, DESIGNS, ARRANGEMENTS AND PLANS RECALCULATED OR REPRESENTED BY THIS DRAWING ARE OWNED BY, AND ARE THE EXCLUSIVE PROPERTY OF KOHN ARCHITECTURE, P.L.L.C. NONE OF SUCH IDEAS, DESIGNS, ARRANGEMENTS OR PLANS SHALL BE USED BY OR DISCLOSED TO ANY PERSON, FIRM OR CORPORATION FOR ANY PURPOSE WHATSOEVER WITHOUT THE WRITTEN PERMISSION OF KOHN ARCHITECTURE, P.L.L.C.