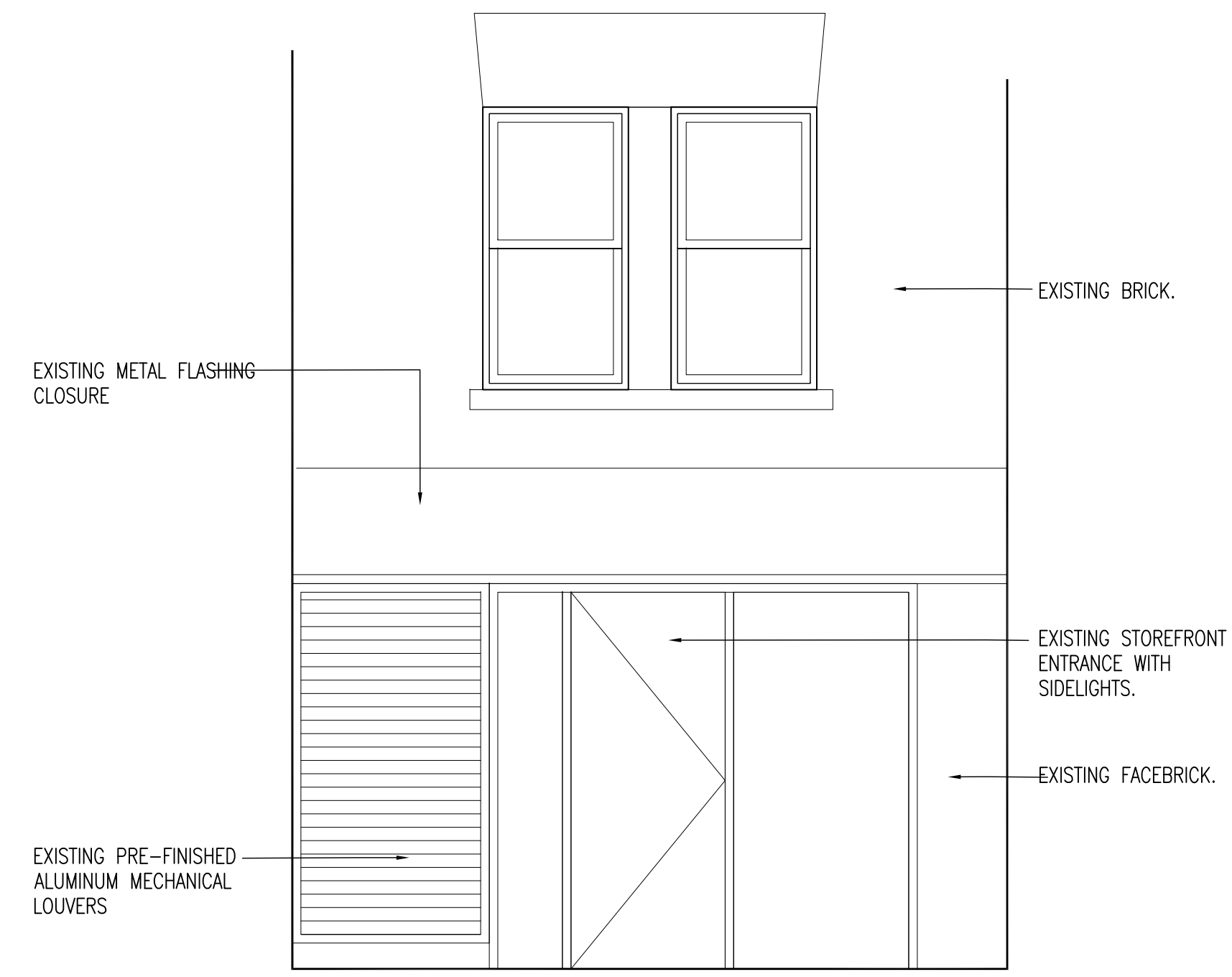
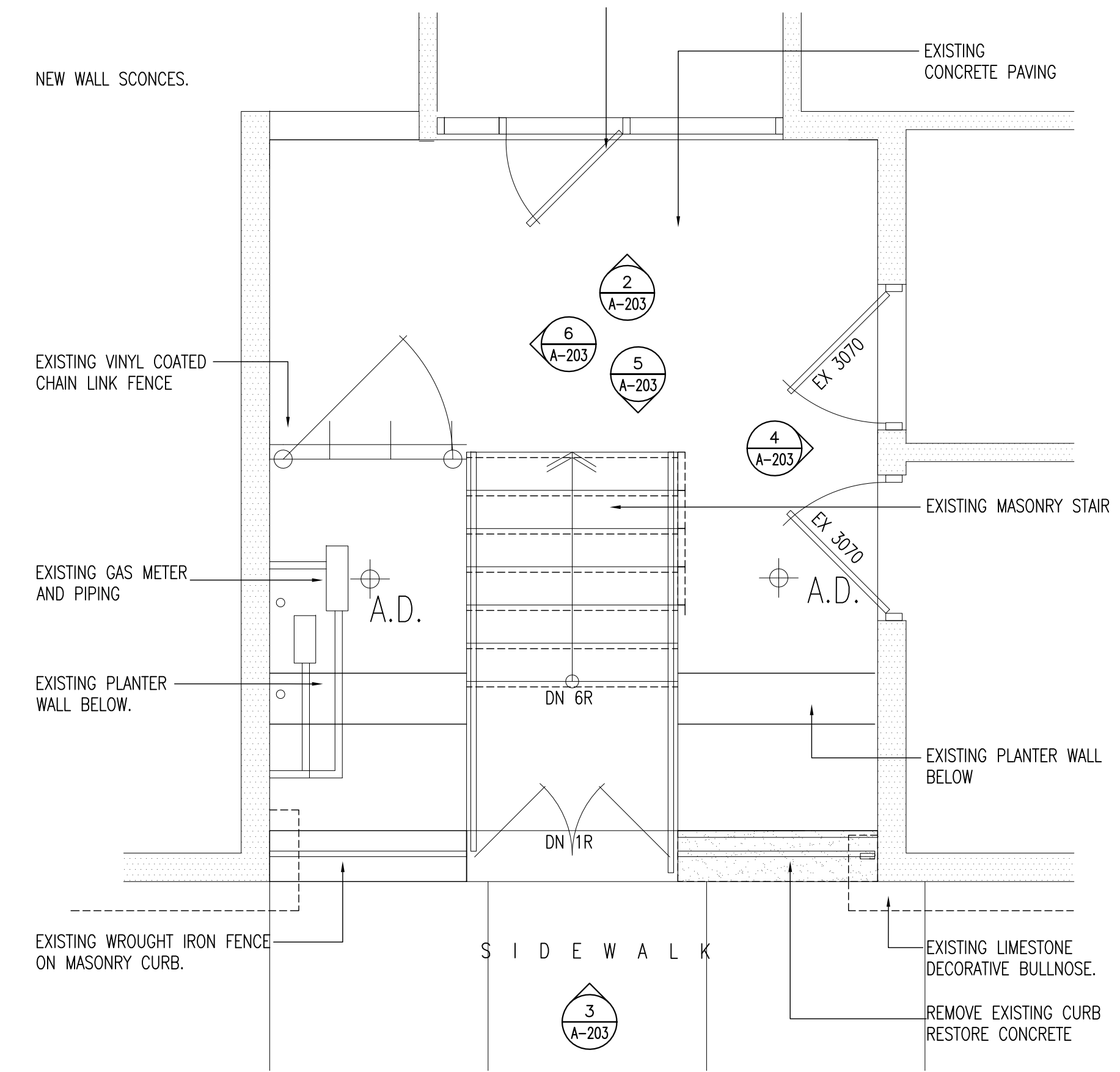


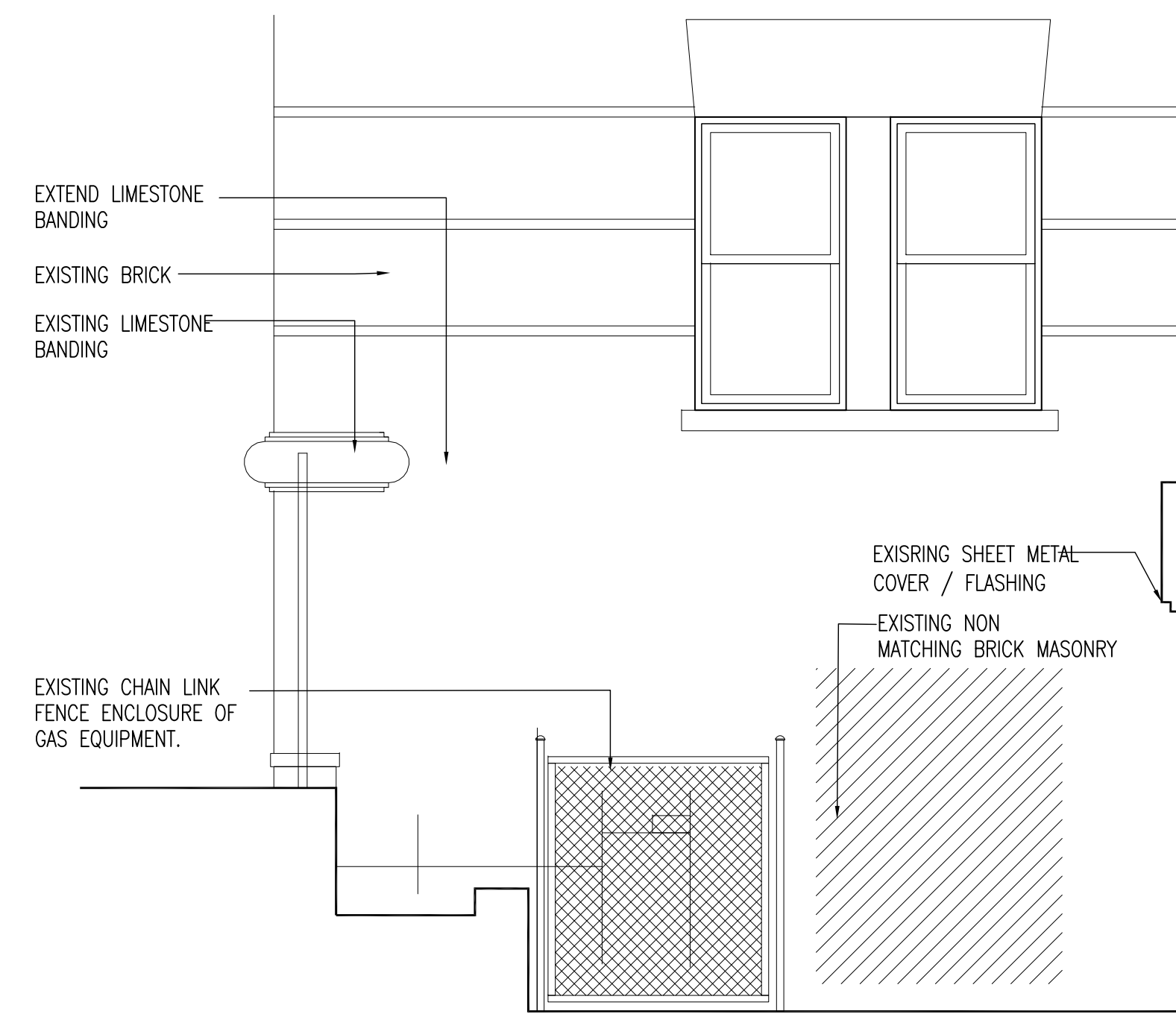
3 ELEV. @ SOUTH CT. ENTRANCE (EXISTING)
3/8"=1'-0"



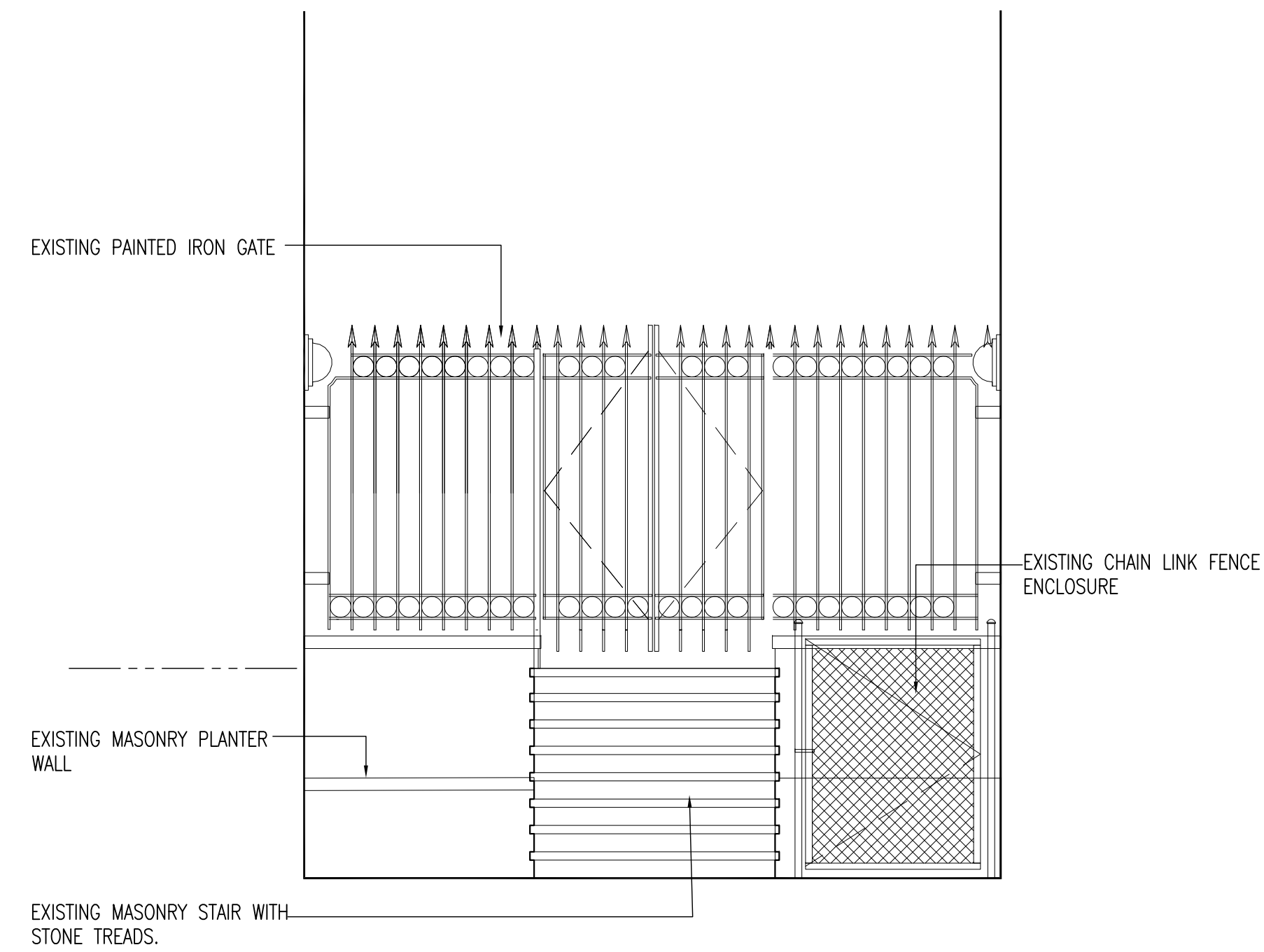
2 S. CT. SOUTH FACING ELEV. PARTIAL (EXISTING)
3/8"=1'-0"



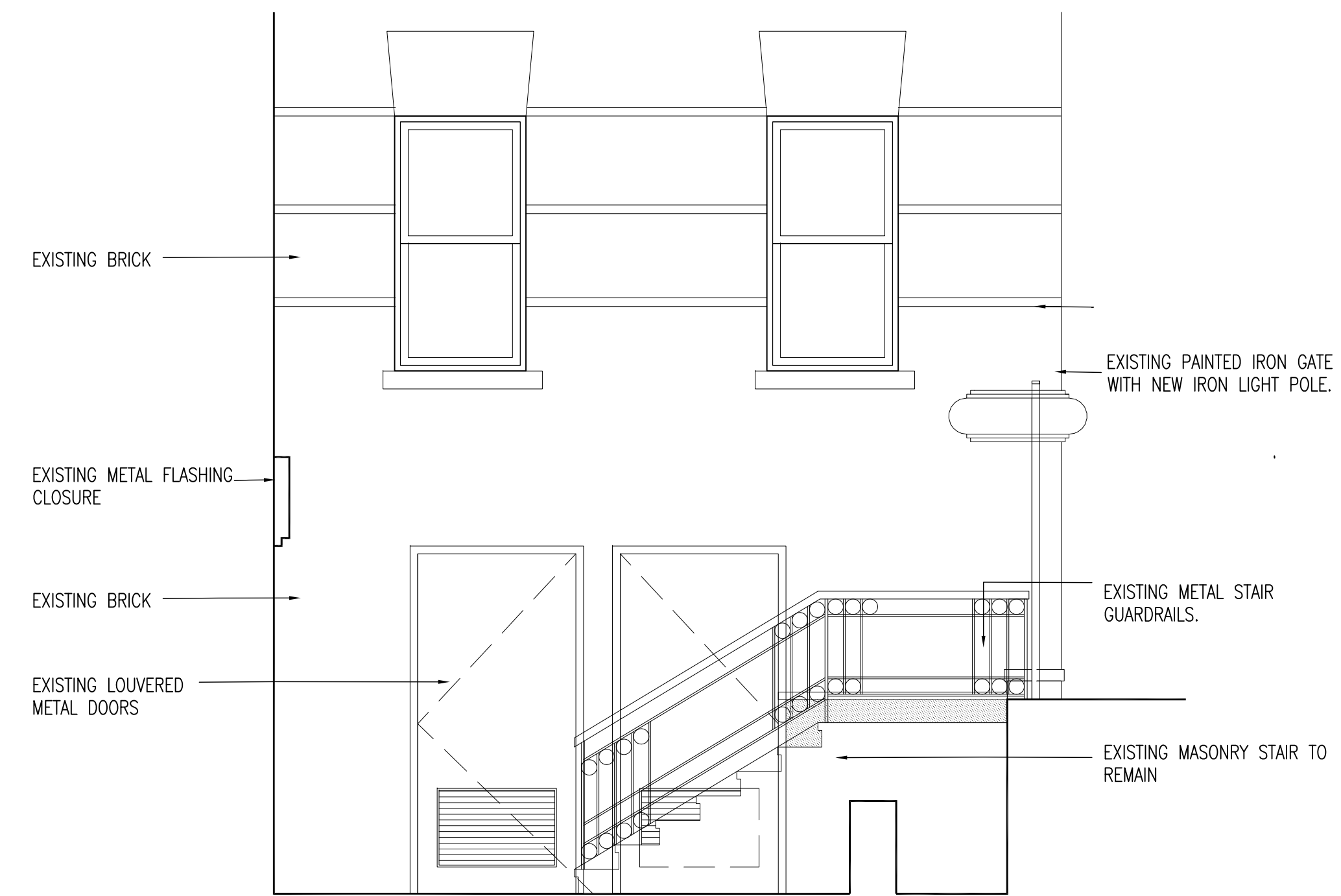
1 PLAN AT SOUTH COURT AREAWAY (EXISTING)
3/8"=1'-0"



6 PART WEST ELEVATION AT SOUTH COURT
3/8"=1'-0"



5 NORTH ELEVATION AT SOUTH COURT.
3/8"=1'-0"

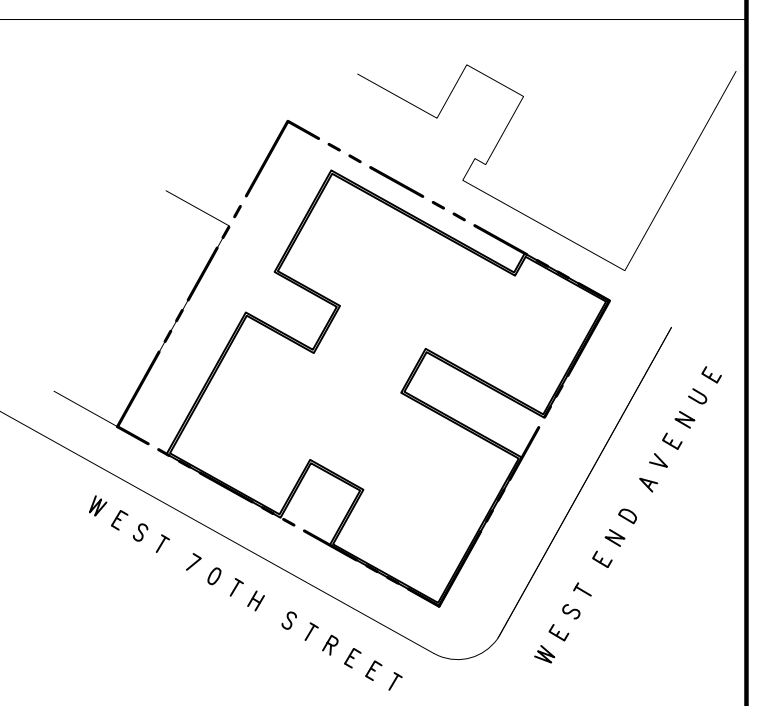


4 PART EAST ELEVATION AT SOUTH COURT (EXISTING)
3/8"=1'-0"

Architect
MVN ARCHITECT LLC
 39-39 29th Street
 Long Island City, NY 11101
 tel: 718-482-8190 fax: 718-361-2153
 website: www.mvnarch.com email: info@mvnarch.com

Project
225 West End Avenue
 New York, NY 10023
STOREFRONT, SIGNAGE & ADA UPGRADES

NUMBER	DATE	REVISION



Plot Plan (N.T.S.)

ADDRESS: 225 WEST END AVENUE, NEW YORK, NY 10023
 BLOCK: 1182 LOT: 29
 ZONING: R8B MAP: 8c
 OCCUP. CLASS: RESIDENTIAL MULTI-FAMILY

NUMBER	DATE	ISSUE
1	12/08/16	LPC-ISSUE

Drawing Title
PARTIAL PLAN & ELEVATIONS AT SOUTH COURT (EXISTING)

Job No.: 12-32d
 Date: DECEMBER 8, 2016
 Scale: 3/8"=1'-0"
 Drawn by: SMM

Seal: **A-203**