

137 RIVERSIDE DRIVE

PROPOSED WHEELCHAIR STAIR LIFT INSTALLATION

PRESENTED BY: RONAN MC LAUGHLIN,
SW ENGINEERING CO.

PRESENTATION DATE: 02/09/2017



Wheelchair accessibility for home or public buildings over straight stairways

Folds up compactly when not in use leaving access to the stairs

Custom order for your specific needs

Savaria® Delta Inclined Platform Lift

ACCESS OVER STRAIGHT STAIRS



The Savaria Delta inclined platform lift provides wheelchair access over straight stairs as it travels along a modular guide rail system. When not in use, the unit folds compactly to the wall, leaving access to the stairs. The Delta lift is a popular choice for churches, schools and homes with minimal construction needed for installation.

Battery operated with charging stations located at the top and bottom of the stairs, the lift continues to function even through a power failure. Choose from four platform sizes, including ADA-compliant size, and select options such as a folding seat, automatic folding/unfolding or a public building package.

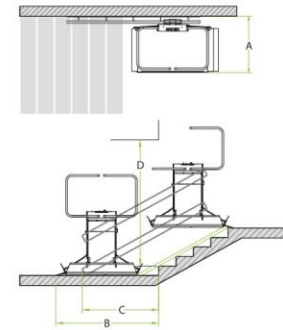


Savaria® Delta Inclined Platform Lift

ACCESS OVER STRAIGHT STAIRS



- Folds up compactly (18"/45.7 cm) from the wall when not in use allowing easy access to the stairs
- Durable construction and reliable components to stand up to day-to-day use even in commercial settings
- Easy installation, often without major construction requirements
- Configure for straight through access or 90° entry/exit with a variety of standard platform sizes available
- Battery operation with top and bottom landing charging stations
- Pendant control with constant pressure operation, keyed for security
- Safety features include edge and underpan obstruction sensors, overspeed safety brake, safety arms, platform ramps, emergency stop button, limit switches, manual operation (using handwheel), lockable master power switch
- Optional features: automatic folding/unfolding for platform and arms, public building package, folding seat



SPECIFICATIONS

Applications	Residential, commercial, indoor
Stair types	Straight, single flight with constant gradient
Capacity	550 lb (250 kg), optional 660 lb (300 kg) USA only
Travel distance	8" (20 cm) to 40' (12 m) residential 8" (20 cm) to 80' (24 m) commercial
Finish Color	Light gray (RAL 7035)
Nominal speed	20 ft/min (0.10 m/s)
Motor	0.66 hp (0.5 kW)
Power	24V DC (battery system); 120V AC for charger
Warranty	36 months parts, ask dealer for details

Outdoor applications are limited by your specific climate conditions, consult with your local dealer

CLEARANCES

Platform size	28.4" x 35.5" (720 x 900 mm)	27" x 36" (685 x 914 mm)	28.5" x 44" (724 x 1118 mm)	30.5" x 49.3" (775 x 1250 mm)
Unfolded width (A)	37.8" (959 mm)	36.4" (923 mm)	38" (966 mm)	40" (1017 mm)
Bottom landing (B)*	60.2"-54.4" (1530-1381 mm)	60.8"-54.9" (1544-1395 mm)	68.8"-62.9" (1747-1598 mm)	74"-68.1" (1880-1731 mm)
End of rail (C)*	44.9"-38.2" (1140-971 mm)	45.2"-38.5" (1147-978 mm)	49.2"-42.5" (1249-1080 mm)	51.8"-45.1" (1315-1146 mm)
Overhead (D)*	80.8"-94.6" (2053-2402 mm)	81.1"-95" (2059-2413 mm)	84.8"-101.6" (2153-2580 mm)	87.2"-106" (2215-2692 mm)

Values given for straight through entrance, see planning guide for 90° entrance which requires additional clearance. For post-mounted units add 3.5" to the unfolded platform width. *Clearances range based on stair angle, values are stated for 25° to 40°, see planning guide for complete details.

Authorized Savaria Dealer:



www.savaria.com
2 Walker Drive, Brampton, ON L6T 5E1 Canada
tel: 800.661.5112 fax: 905.791.2222

Savaria makes every effort to publish accurate information. Specifications and options are subject to change without notice. ©2013 Savaria Corporation.



Accessibility to overcome the barrier of stairs

Models for straight stairs, as well as curved, turning, multi-level stairs and stairs with intermediate landings

Unobtrusive designs with hideaway options for easy access on demand

Savaria® Inclined Platform Lifts

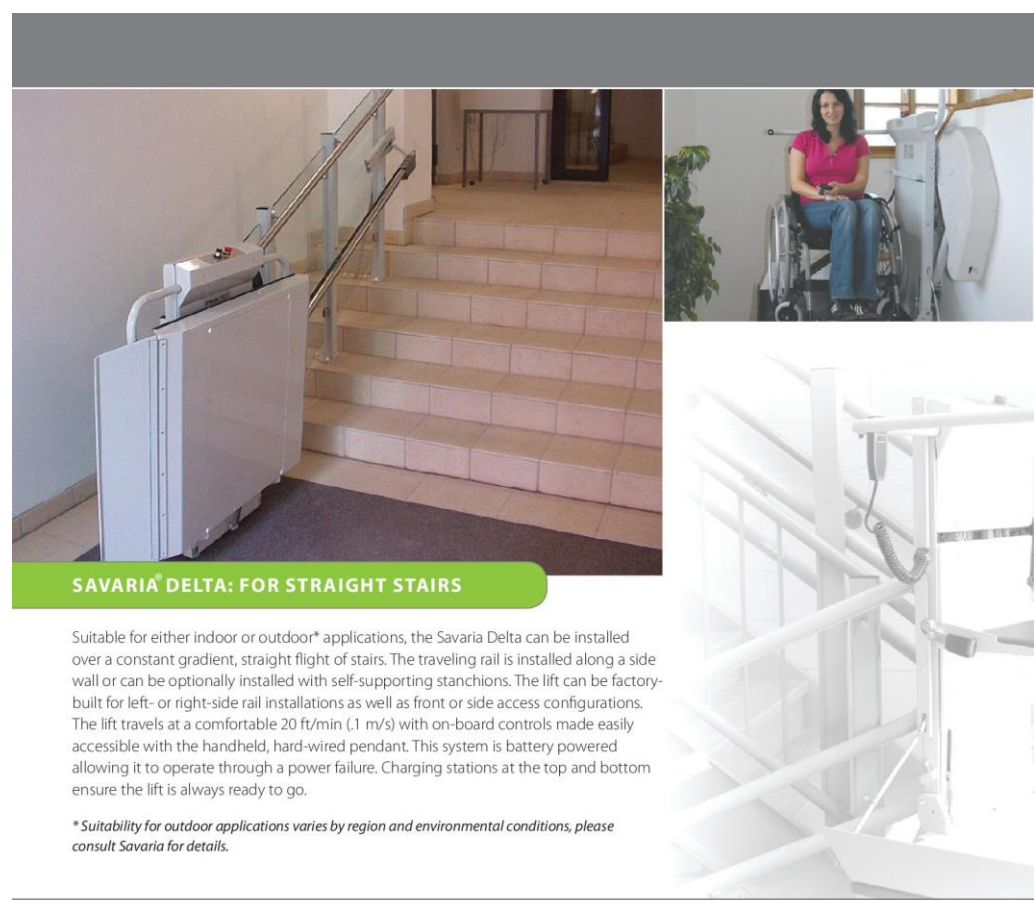
SPACE-SAVING, EASY ACCESS



Providing barrier-free access does not have to involve major construction when you choose a Savaria inclined platform lift. Built to transport a wheelchair passenger on a platform that glides over the stairs, the lift folds up when not in use leaving unobstructed access to the stairs.

The **Savaria Delta** model is designed for use with a single level of straight stairs, while the **Savaria Omega** model handles multiple levels, turning stairs, curved stairs or stairs with intermediate landings.

Whether you need a lift for your home, school or any public building, Savaria inclined platform lifts feature space saving designs, reliable performance and user-friendly operation.



SAVARIA® DELTA: FOR STRAIGHT STAIRS

Suitable for either indoor or outdoor* applications, the Savaria Delta can be installed over a constant gradient, straight flight of stairs. The traveling rail is installed along a side wall or can be optionally installed with self-supporting stanchions. The lift can be factory-built for left- or right-side rail installations as well as front or side access configurations. The lift travels at a comfortable 20 ft/min (.1 m/s) with on-board controls made easily accessible with the handheld, hard-wired pendant. This system is battery powered allowing it to operate through a power failure. Charging stations at the top and bottom ensure the lift is always ready to go.

**Suitability for outdoor applications varies by region and environmental conditions, please consult Savaria for details.*

NO MAJOR RENOVATIONS REQUIRED

Generally, a Savaria inclined platform lift does not require significant building renovations. Securely installed along stanchions or a side wall*, the platform glides along its rail when in use and folds up when idle. When an elevator or vertical lift is not easily accommodated for cost or construction concerns, a Savaria inclined platform lift is an excellent option for accessibility, with space and cost savings.

**Installation methods are determined based on the lift model and your existing building structure*

HIGH CAPACITY, ADA-COMPLIANT OPTION

With a weight capacity of 660 lb (550 lb for Canada) and an optional large ADA-compliant platform, these lifts are ideal for public accessibility requirements.

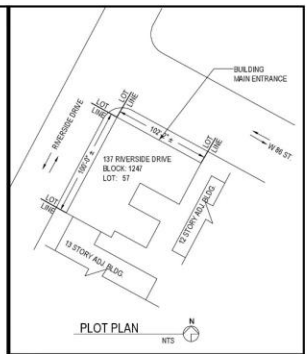
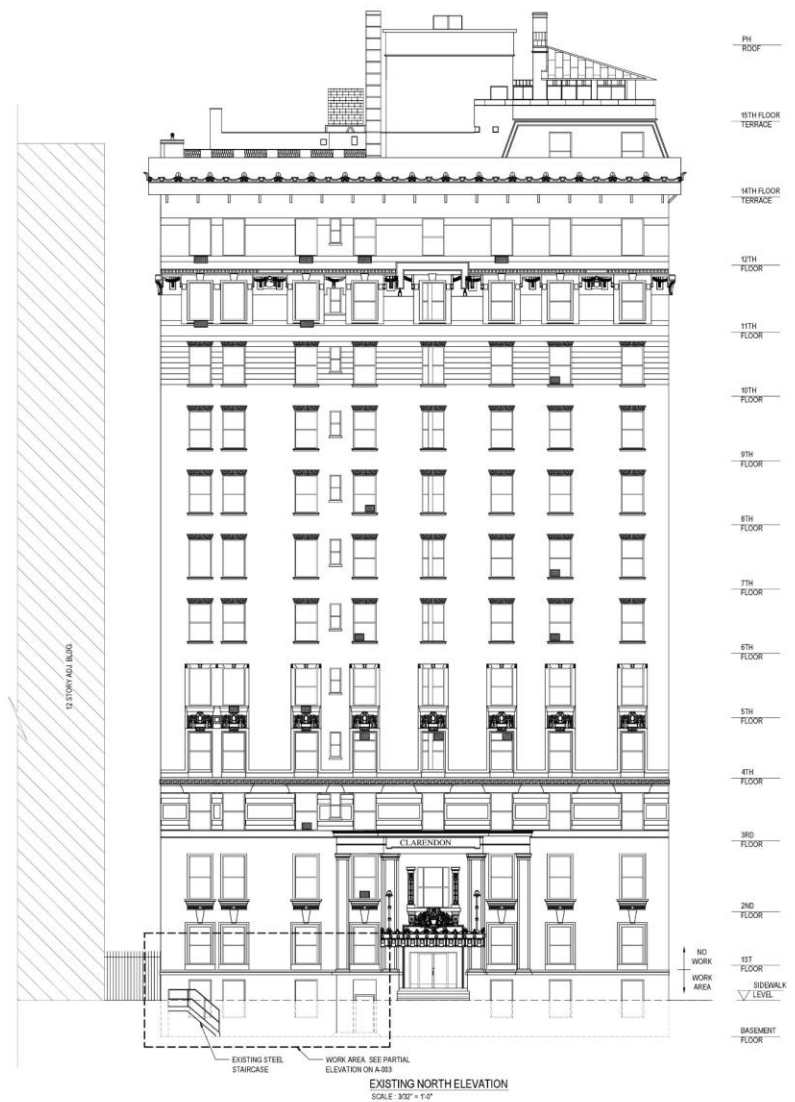
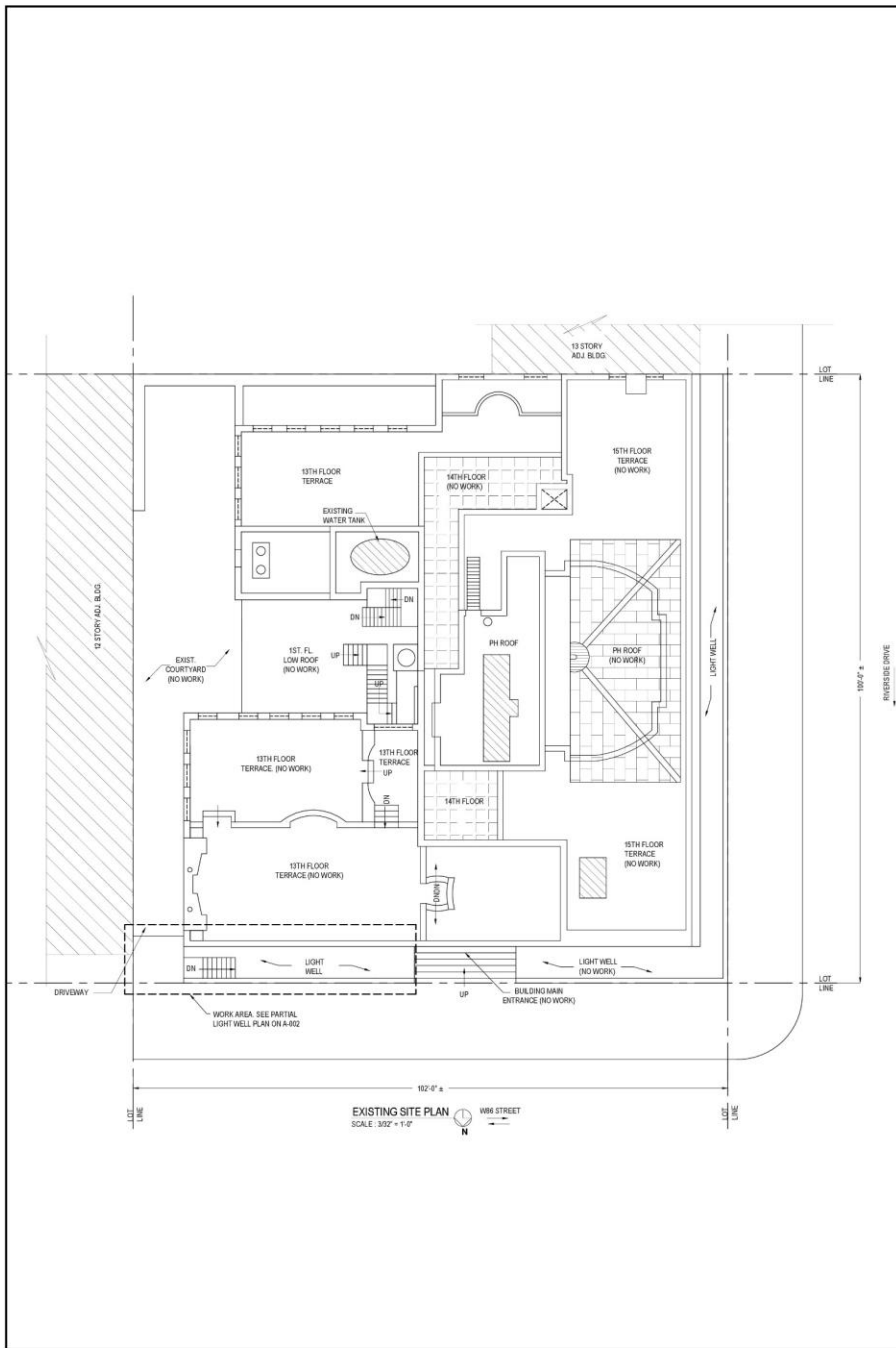
EASY OPERATION

Savaria inclined platform lifts feature simple-to-use controls for lift operation including optional motorized folding, unfolding and motorized ramps. Constant pressure buttons move the lift up and down so even first-time users should find the lift easy to use.

UNOBTRUSIVE DESIGN

With sleekly finished traveling rails, a foldaway design and optional out-of-the-way parking, a Savaria inclined platform lift delivers access on demand and harmonizes with your current building design.

The motor is housed on board the Delta lift for simplicity of installation. On the Omega, the motor is unobtrusively installed at the top landing, with the controller located remotely keeping the visible components to a minimum.



SW Engineering Co., PLLC
260 WEST 35th STREET, 12TH FLOOR, NEW YORK, NY 10001
TEL. (212)967-8060 FAX (212)967-8062
SWENGINEERINGCO.COM

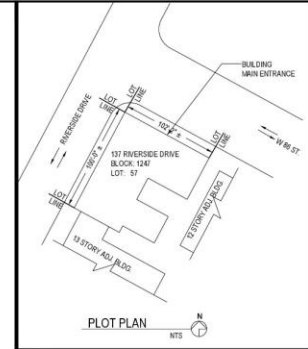
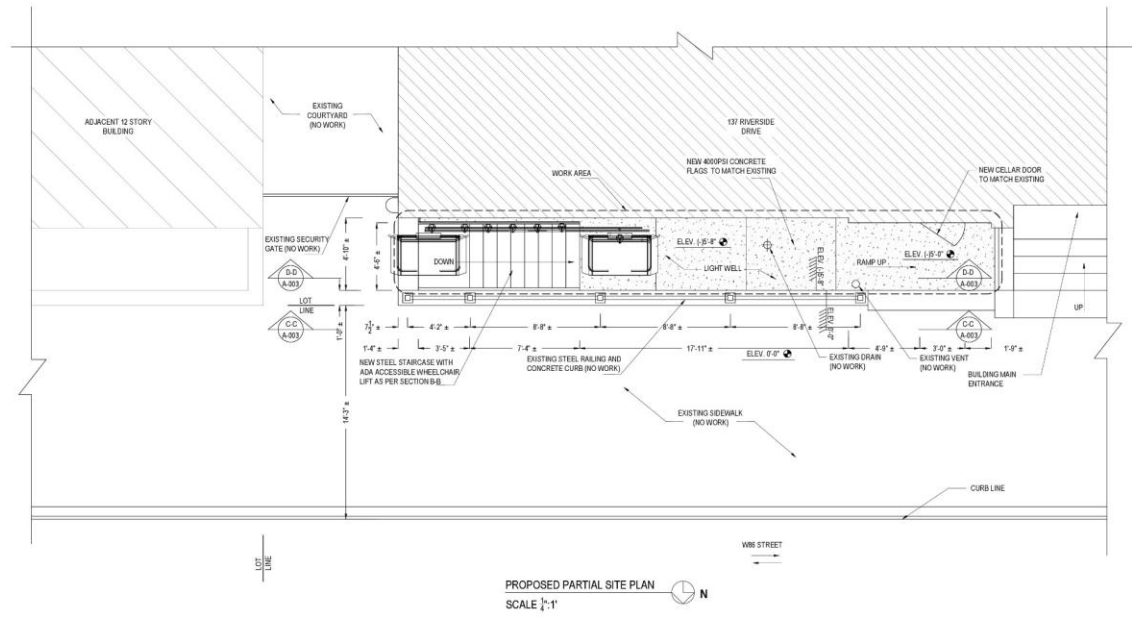
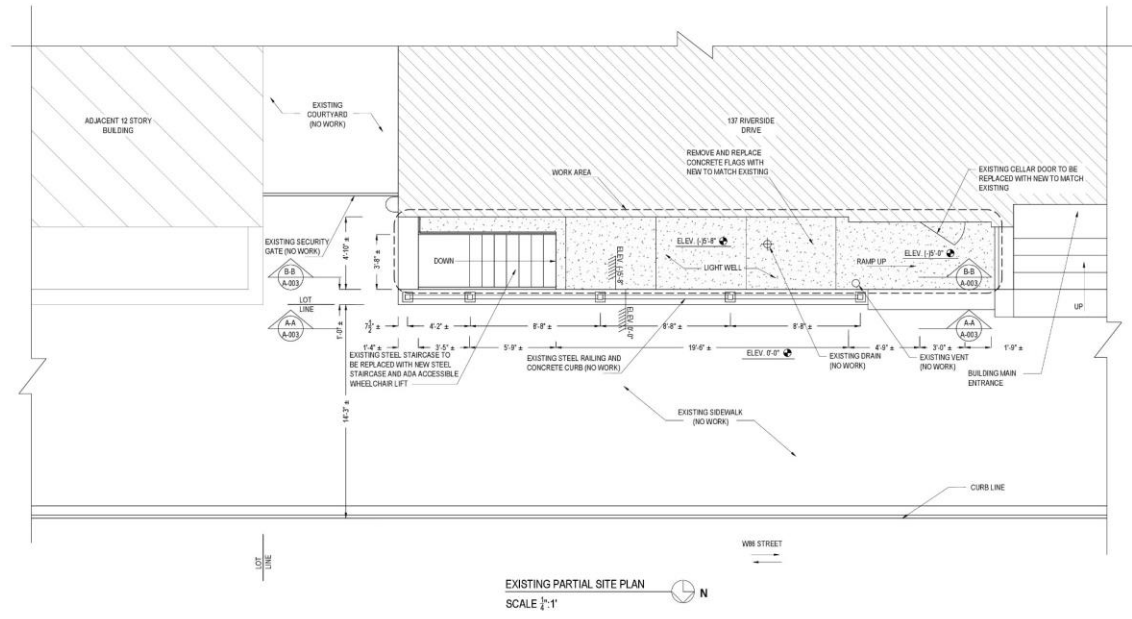
No	Revised	Date

Project : NEW ADA STAIR LIFT INSTALLATION

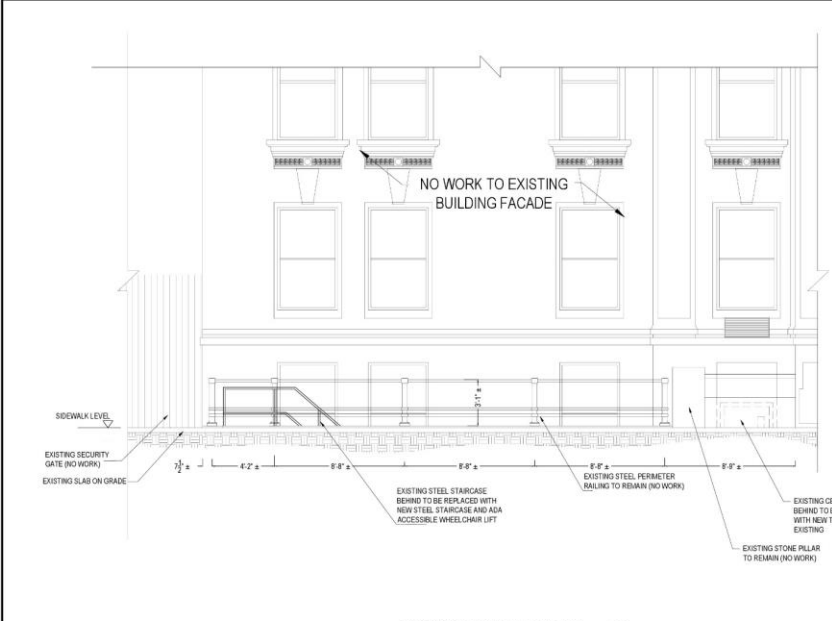
Location : 137 RIVERSIDE DRIVE, NEW YORK, NY.

Title : SITE PLAN AND NORTH ELEVATION

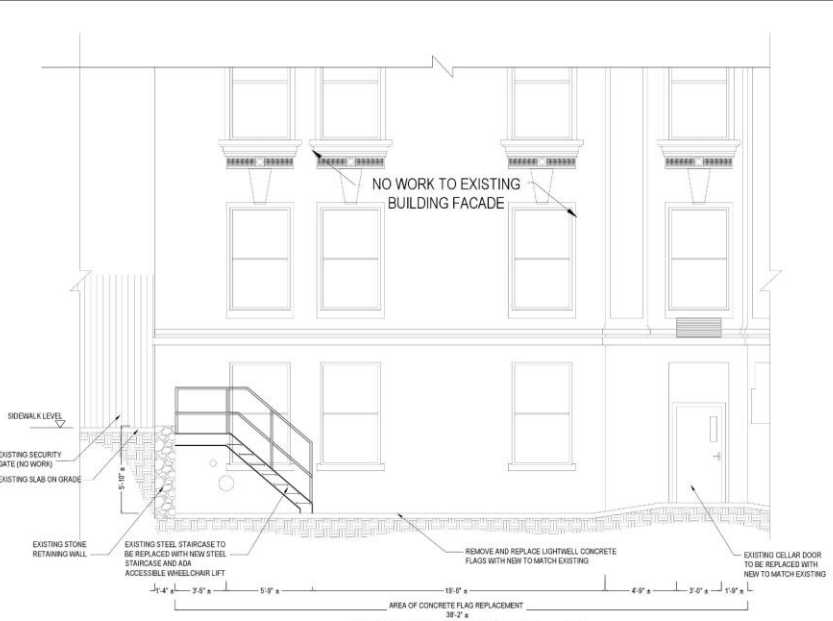
SEAL & SIGNATURE	DATE : 12/16/16
	PROJECT NO.: 0151
	DRAWING BY : ZM
	CHK BY : YW
	DWG No. :
A-001.00	
SHEET : 2 of 5	



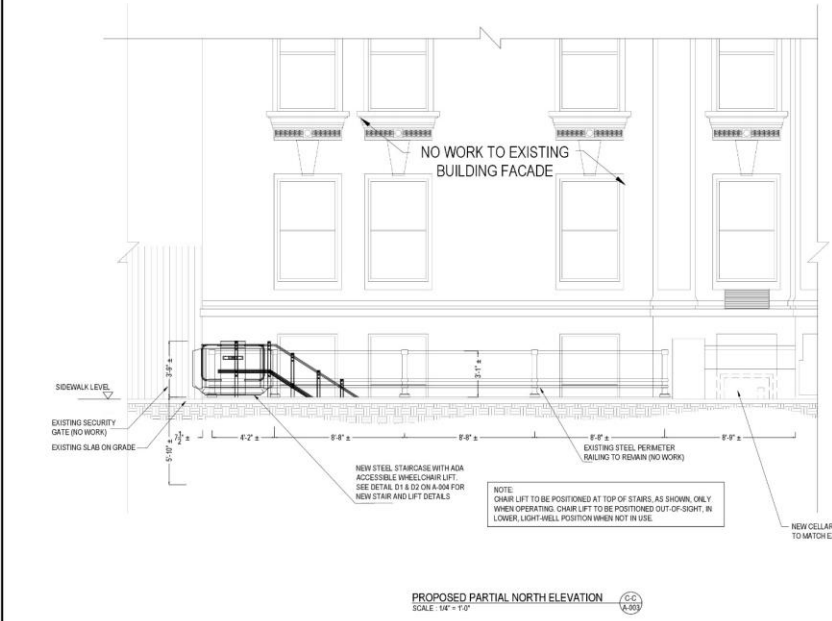
SW Engineering Co., PLLC	
260 WEST 35th STREET, 12TH FLOOR, NEW YORK, NY 10001	
TEL. (212)967-8060 FAX (212)967-8062 SWENGINEERINGCO.COM	
No	Revised Date
Project : NEW ADA STAIR LIFT INSTALLATION	
Location : 137 RIVERSIDE DRIVE, NEW YORK, NY.	
Title : EXISTING & PROPOSED PARTIAL SITE PLANS	
SEAL & SIGNATURE	DATE : 12/16/16
	PROJECT NO. : 0151
	DRAWING BY : ZM
	CHK BY : YW
	DWG No. :
	A-002.00
	SHEET : 3 of 5



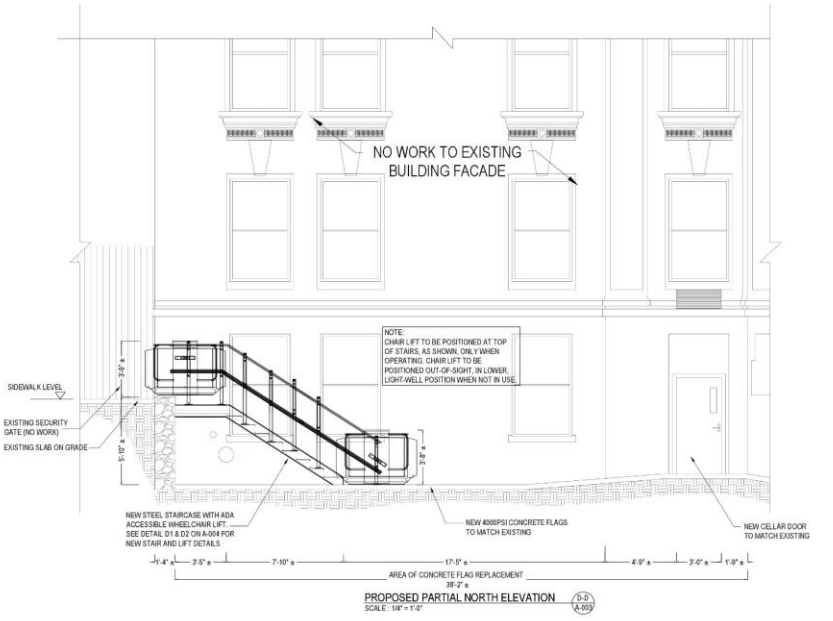
EXISTING PARTIAL NORTH ELEVATION
SCALE: 1/4" = 1'-0"



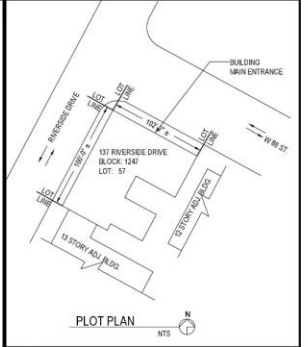
EXISTING PARTIAL NORTH ELEVATION
SCALE: 1/4" = 1'-0"



PROPOSED PARTIAL NORTH ELEVATION
SCALE: 1/4" = 1'-0"



PROPOSED PARTIAL NORTH ELEVATION
SCALE: 1/4" = 1'-0"



S/W Engineering Co., PLLC
260 WEST 35TH STREET, 12TH FLOOR, NEW YORK, NY 10001
TEL: (212)967-8060 FAX: (212)967-8062
SWENGINEERINGCO.COM

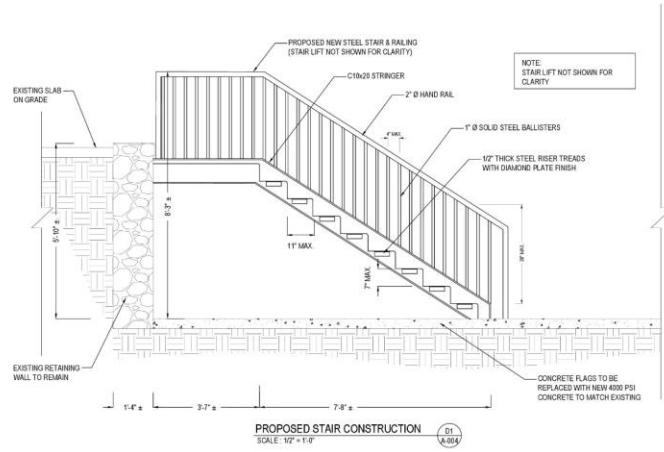
No	Revised	Date

Project : NEW ADA STAIR LIFT INSTALLATION

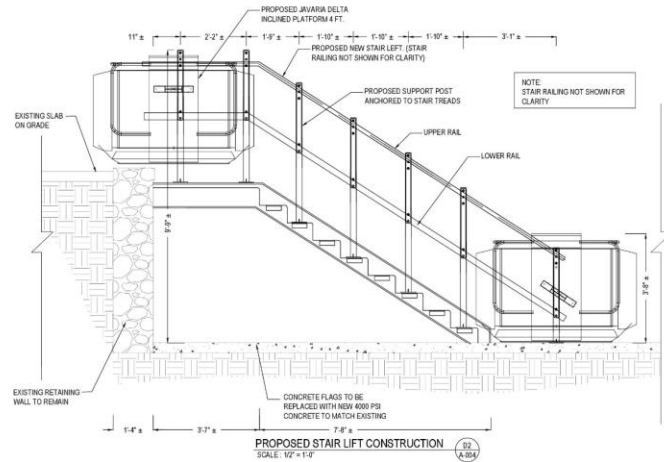
Location : 137 RIVERSIDE DRIVE;
NEW YORK, NY.

Title : ELEVATIONS AND SECTIONS

SEAL & SIGNATURE	DATE : 12/16/16
	PROJECT NO.: 0151
	DRAWING BY : ZM
	CHK BY : YW
	DWG No. :
A-003.00	
SHEET : 4 of 5	



PROPOSED STAIR CONSTRUCTION
SCALE: 1/2" = 1'-0"



PROPOSED STAIR LIFT CONSTRUCTION
SCALE: 1/2" = 1'-0"

SCOPE OF WORK
 REMOVAL OF EXISTING STEEL ACCESS STAIR AND HANDRAIL AND INSTALLATION OF NEW ADA COMPLIANT ACCESS STAIR, HANDRAIL AND STAIR LIFT PLATFORM.
 REMOVAL AND REPLACEMENT OF EXISTING DETERIORATED CONCRETE FLAGS WITH NEW TO MATCH EXISTING.
 REMOVAL AND REPLACEMENT OF EXISTING CELAR DOOR WITH NEW TO MATCH EXISTING.

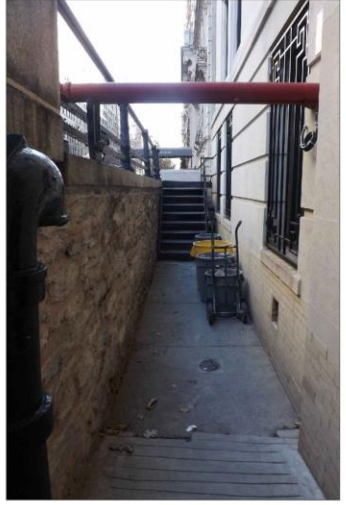
NOTE:
 CHAIR LIFT TO BE POSITIONED AT TOP OF STAIRS AS SHOWN ONLY WHEN OPERATING CHAIR LIFT TO BE POSITIONED OUT-OF-SIGHT, IN LOWER LIGHTWELL POSITION WHEN NOT IN USE.



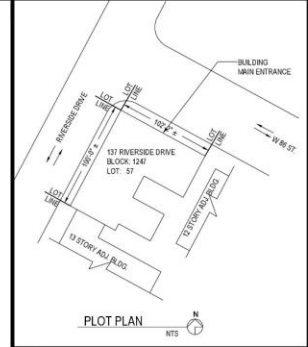
EXISTING PARTIAL NORTH ELEVATION



EXISTING LIGHT WELL VIEW FROM STREET



EXISTING STAIR VIEW FROM LIGHT WELL



SW Engineering Co., PLLC
 260 WEST 35TH STREET, 12TH FLOOR, NEW YORK, NY 10001
 TEL. (212)967-8060 FAX (212)967-8062
 SWENGINEERINGCO.COM

No	Revised	Date

Project : NEW ADA STAIR LIFT INSTALLATION

Location : 137 RIVERSIDE DRIVE,
NEW YORK, NY.

Title : DETAIL

SEAL & SIGNATURE	DATE	: 12/16/16
	PROJECT NO.:	0151
	DRAWING BY:	ZM
	CHK BY:	YW
	DWG No.:	
A-004.00		
SHEET		: 5 of 5



137 RSD WHEELCHAIR STAIR LIFT



PHOTO #1



PHOTO #2



PHOTO #3



PHOTO #4

137 RSD WHEELCHAIR STAIR LIFT



PHOTO #5

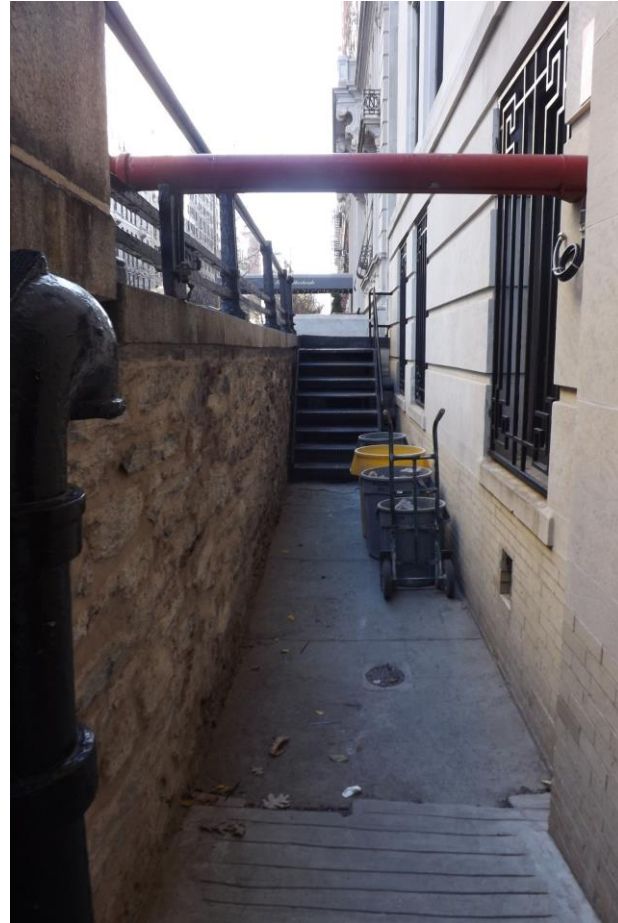


PHOTO #6



PHOTO #7