

# Storefront, Signage and ADA Upgrades,

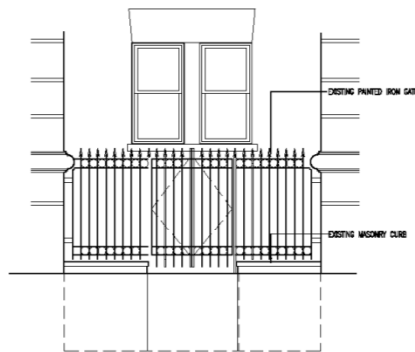
225 West End Avenue  
MVN Architect LLC

## Existing Conditions Photos

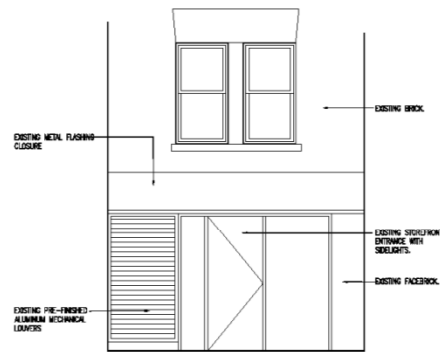


Tax Photo

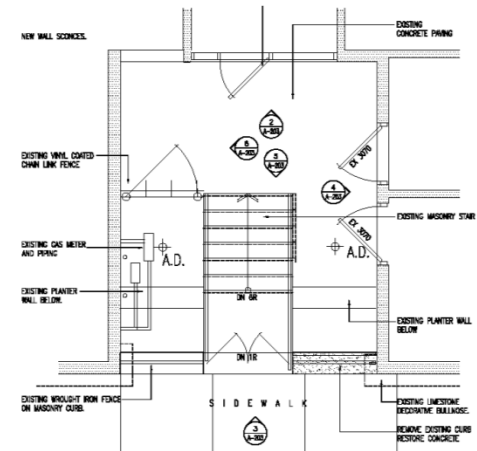




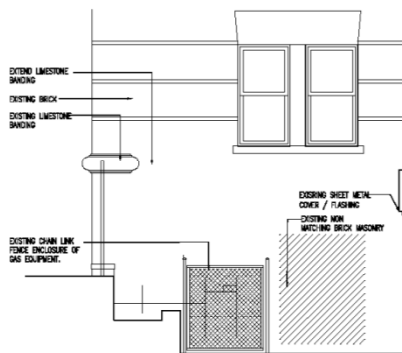
③ ELEV. @ SOUTH CT. ENTRANCE (EXISTING)  
3/8"=1'-0"



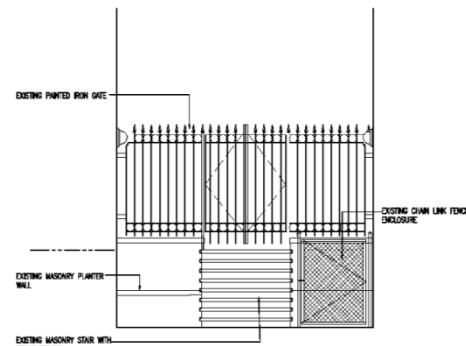
② S. CT. SOUTH FACING ELEV. PARTIAL (EXISTING)  
3/8"=1'-0"



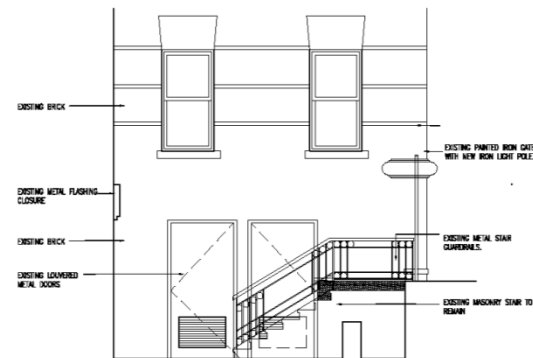
① PLAN AT SOUTH COURT AREAWAY (EXISTING)  
3/8"=1'-0"



⑥ PART WEST ELEVATION AT SOUTH COURT  
3/8"=1'-0"



⑤ NORTH ELEVATION AT SOUTH COURT.  
3/8"=1'-0"



④ PART EAST ELEVATION AT SOUTH COURT (EXISTING)  
3/8"=1'-0"

Architect  
**MVN ARCHITECT LLC**  
35-37 29th Street  
Long Island City, NY 11101  
tel: 718-485-4198 fax: 718-961-2315  
website: mvnarchitect.com email: info@mvnarchitect.com

Project  
**225 West End Avenue  
New York, NY 10023  
STOREFRONT, SIGNAGE &  
ADA UPGRADES**

NUMBER	DATE	REVISION

Plot Plan (A-13)

ADDRESS: 225 WEST END AVENUE, NEW YORK, NY 10023  
BLOCK: 1562 LOT: 5B  
ZONING: R4B  
OCCUP. CLASS: RETAIL/RENTAL, SUITE-FINERY

NUMBER	DATE	ISSUE
1	12/06/16	LPC-ISSUE

Working Title:  
**PARTIAL PLAN &  
ELEVATIONS AT SOUTH  
COURT (EXISTING)**

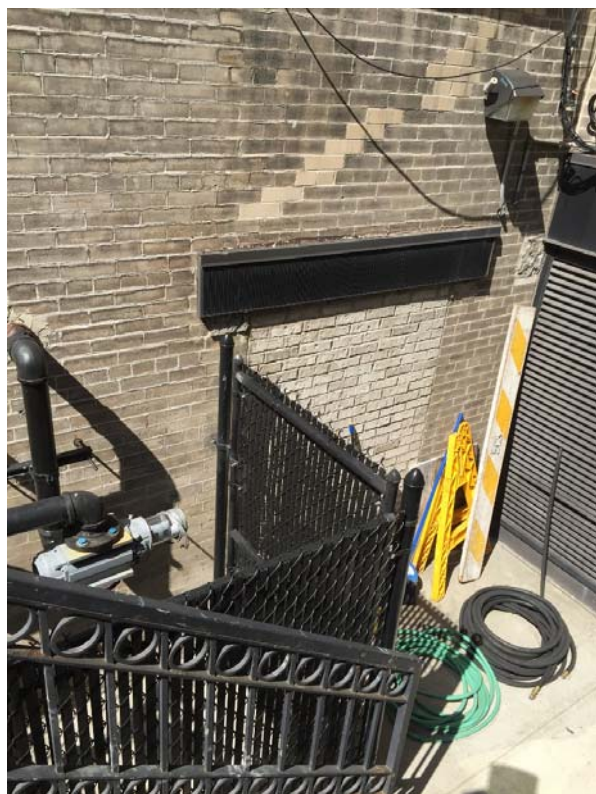
Job No.: 12-334  
Date: DECEMBER 6, 2016  
Scale: 3/8"=1'-0"  
Drawn by: SMH  
Set:  
Dep. No.:  
**A-203**  
4 of 07  
(c) COPYRIGHT MVN ARCHITECT LLC 2016

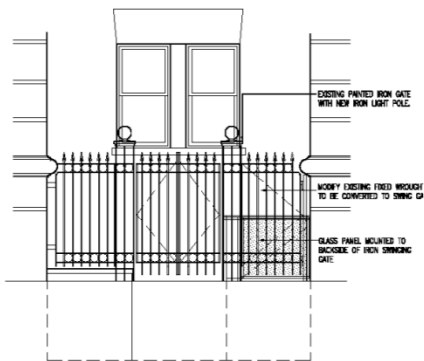


## Photos of South West 70<sup>th</sup> Street Areaway Entrance

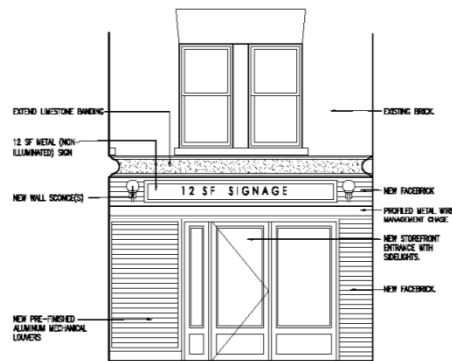


## Photos of South West 70<sup>th</sup> Street Areaway

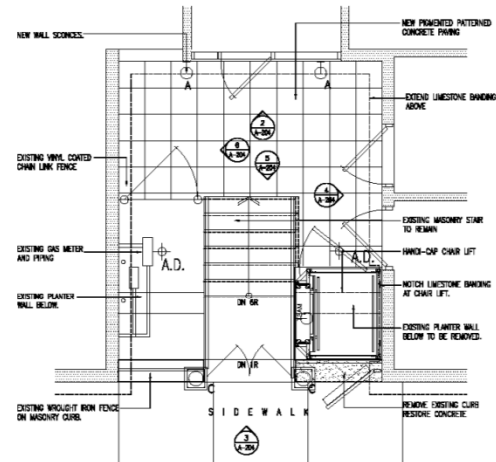




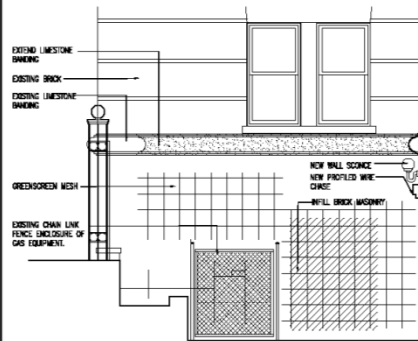
**3 PART. ELEVATION AT SOUTH COURT ENTRANCE**  
3/8"=1'-0"



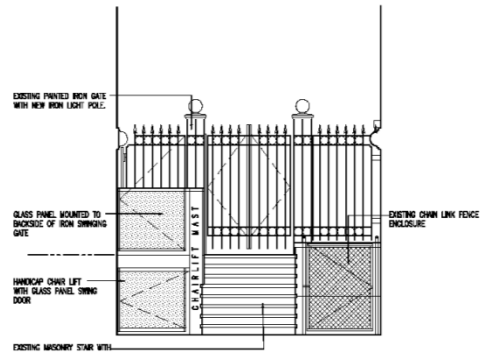
**2 SOUTH COURT SOUTH FACING ELEVATION PARTIAL**  
3/8"=1'-0"



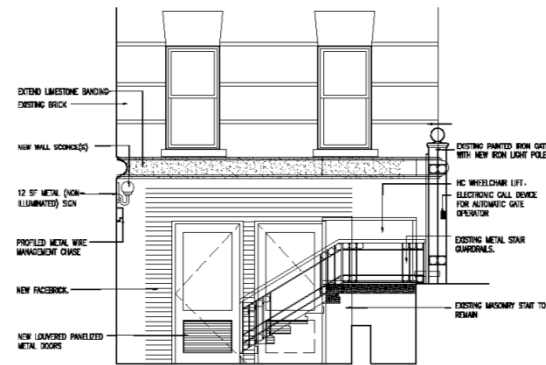
**1 PLAN AT SOUTH COURT AREAWAY**  
3/8"=1'-0"



**6 PART WEST ELEVATION AT SOUTH COURT**  
3/8"=1'-0"



**5 NORTH ELEVATION AT SOUTH COURT.**  
3/8"=1'-0"

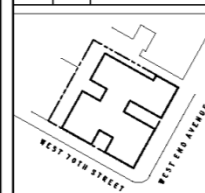


**4 PART EAST ELEVATION AT SOUTH COURT**  
3/8"=1'-0"

Architect  
**MVN ARCHITECT LLC**  
39-39 29th Street  
Long Island City, NY 11101  
tel: 718-454-6100 fax: 718-454-6103  
website: www.mvnarchitect.com email: info@mvnarchitect.com

Project  
**225 West End Avenue  
New York, NY 10023  
STOREFRONT, SIGNAGE &  
ADA UPGRADES**

NUMBER	DATE	REVISION



**Plot Plan (A13)**

ADDRESS: 225 WEST END AVENUE, NEW YORK, NY 10023  
BLOCK: 1182 LOT: 29  
ZONING: R6  
OCCUP. CLASS: RESIDENTIAL, BULK-THREE


NUMBER	DATE	ISSUE

Drawing Title  
**PARTIAL PLAN &  
ELEVATIONS AT SOUTH  
COURT (PROPOSED)**

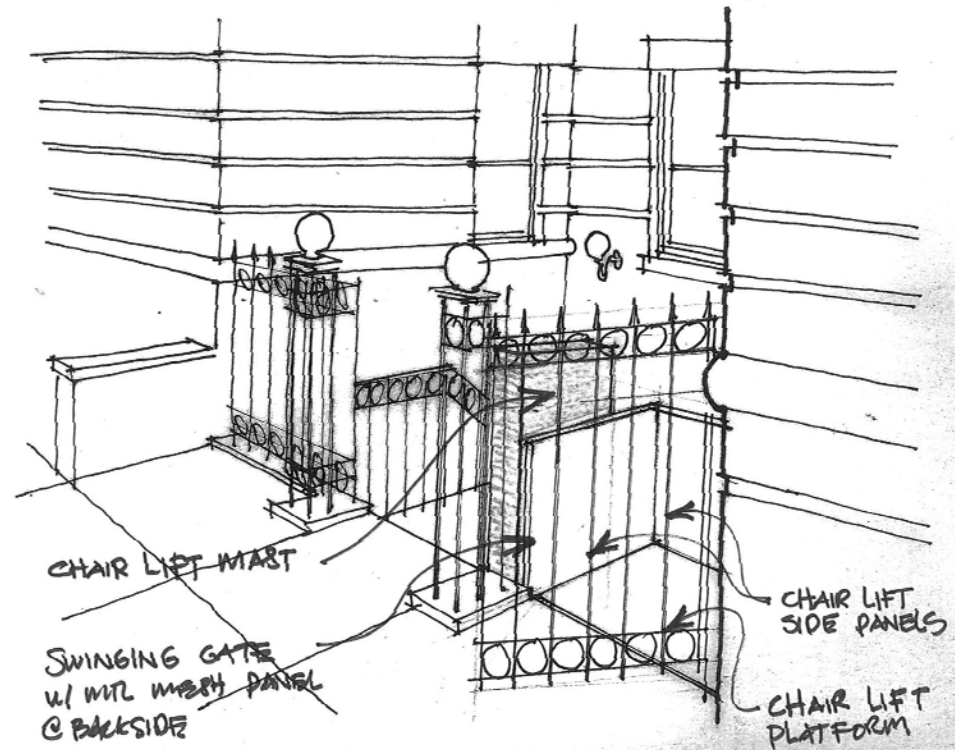
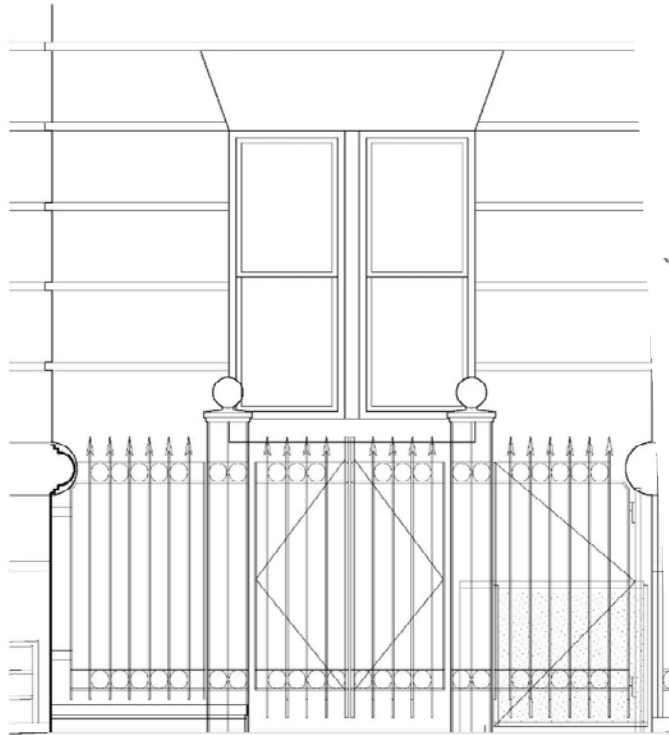
Job No.: 12-324  
Date: DECEMBER 8, 2016  
Scale: 1/8"=1'-0"  
Drawn by: SAM  
Check by:

**A-204**

5 of 07

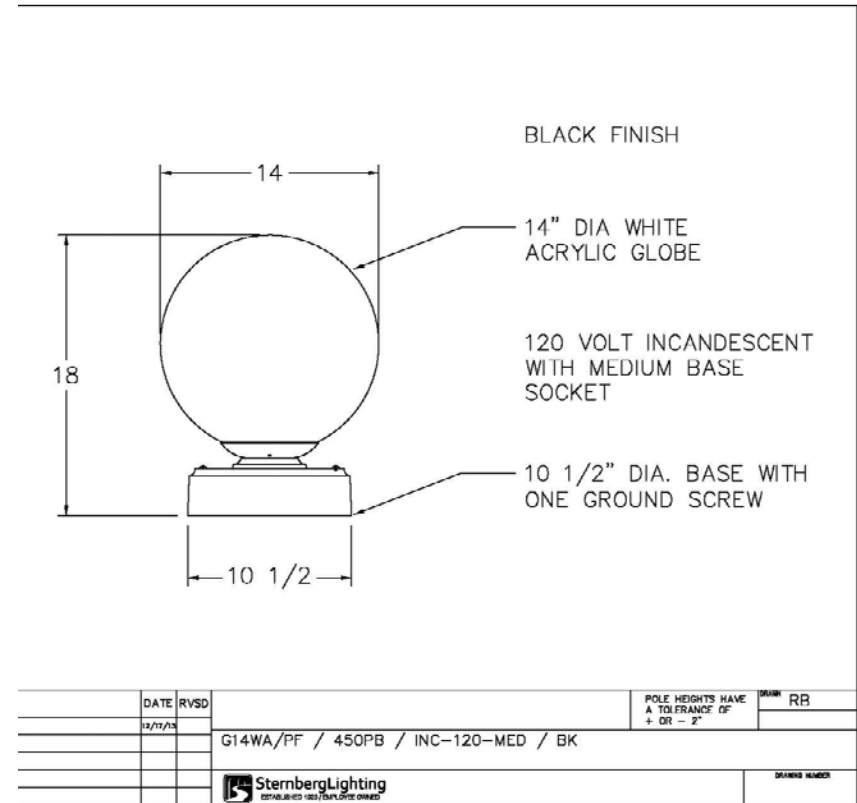
NO COPYRIGHT MVN ARCHITECT LLC 2016

## Proposed Side Entrance Gate Modifications

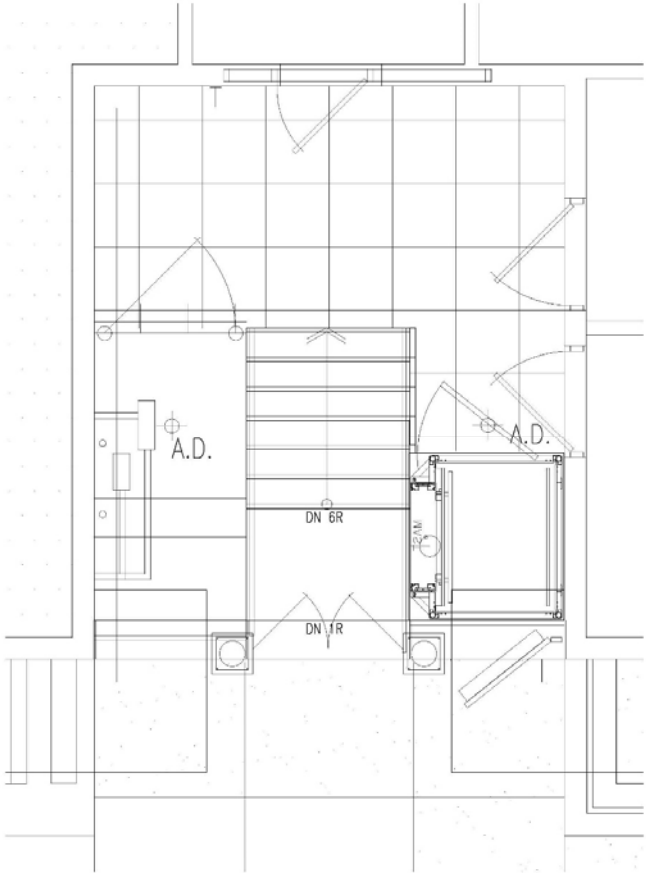




## Example of Open Framed articulated Gate Post & Proposed Globe Light Fixture



South Court HC Upgrades



Photo/Rendered Examples of Proposed Storefront Improvement  
At South West 70<sup>th</sup> Street Areaway

