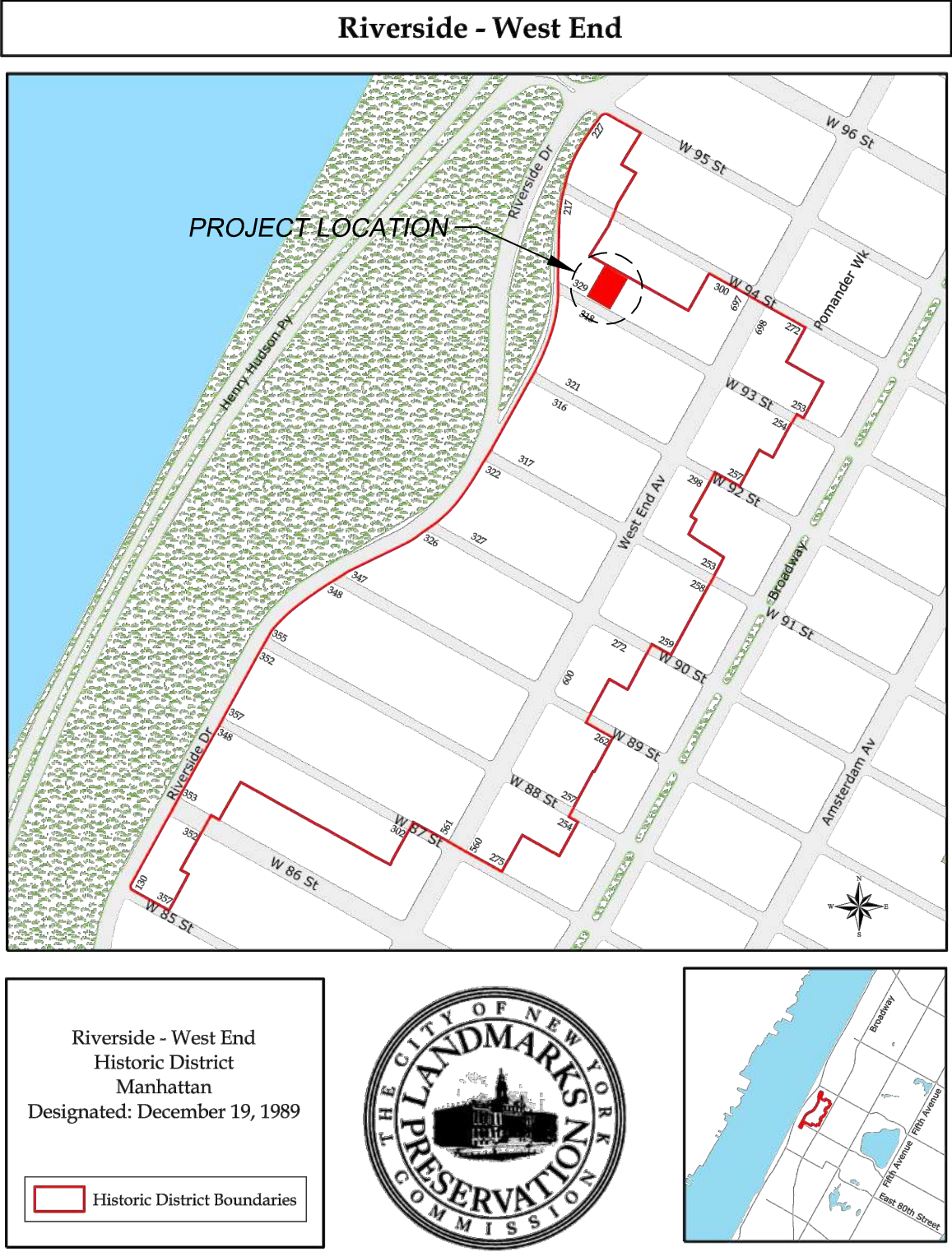


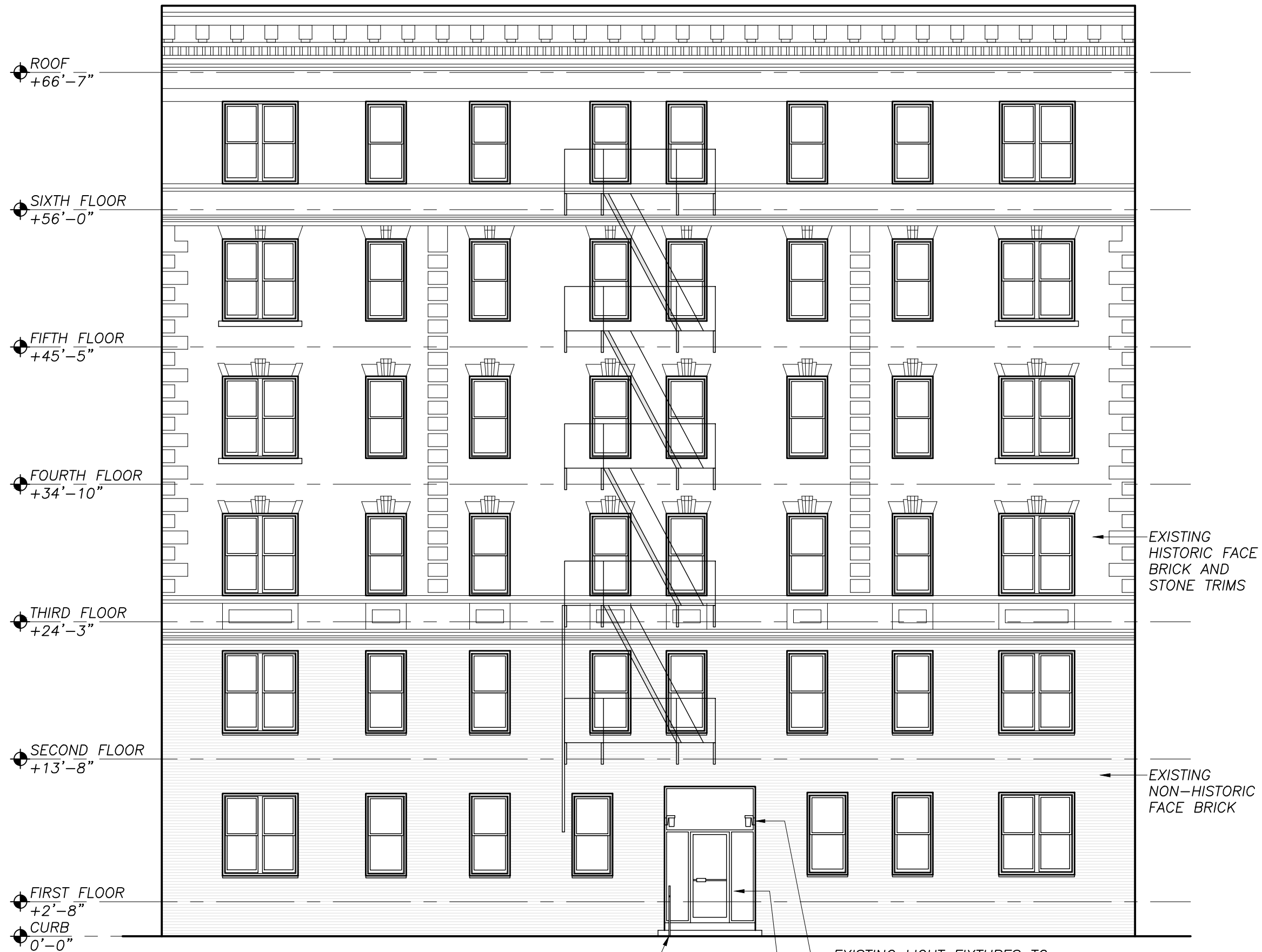


HISTORIC PHOTO



HISTORIC DISTRICT MAP

325 W 93 Street
NEW YORK, NY
RIVERSIDE WEST END
HISTORIC DISTRICT
1 OF 9
REVISED 4/23/2018



1 SOUTH ELEVATION - EXISTING
Scale: $\frac{1}{8}" = 1'-0"$

EXISTING STEEL HANDRAIL
TO BE REMOVED

EXISTING LIGHT FIXTURES TO
BE REPLACED
EXISTING ALUMINUM AND GLASS
BUILDING ENTRANCE TO BE REPLACED
PER DOCKET LPC 19-21542

EXISTING
HISTORIC FACE
BRICK AND
STONE TRIMS

EXISTING
NON-HISTORIC
FACE BRICK

325 W 93 Street

NEW YORK, NY
RIVERSIDE WEST END
HISTORIC DISTRICT

2 OF 9
REVISED 4/23/2018



325 W 93 Street
 NEW YORK, NY
 RIVERSIDE WEST END
 HISTORIC DISTRICT
 3 OF 9
 REVISED 7/10/2018



CANOPY AT 309 W93rd ST



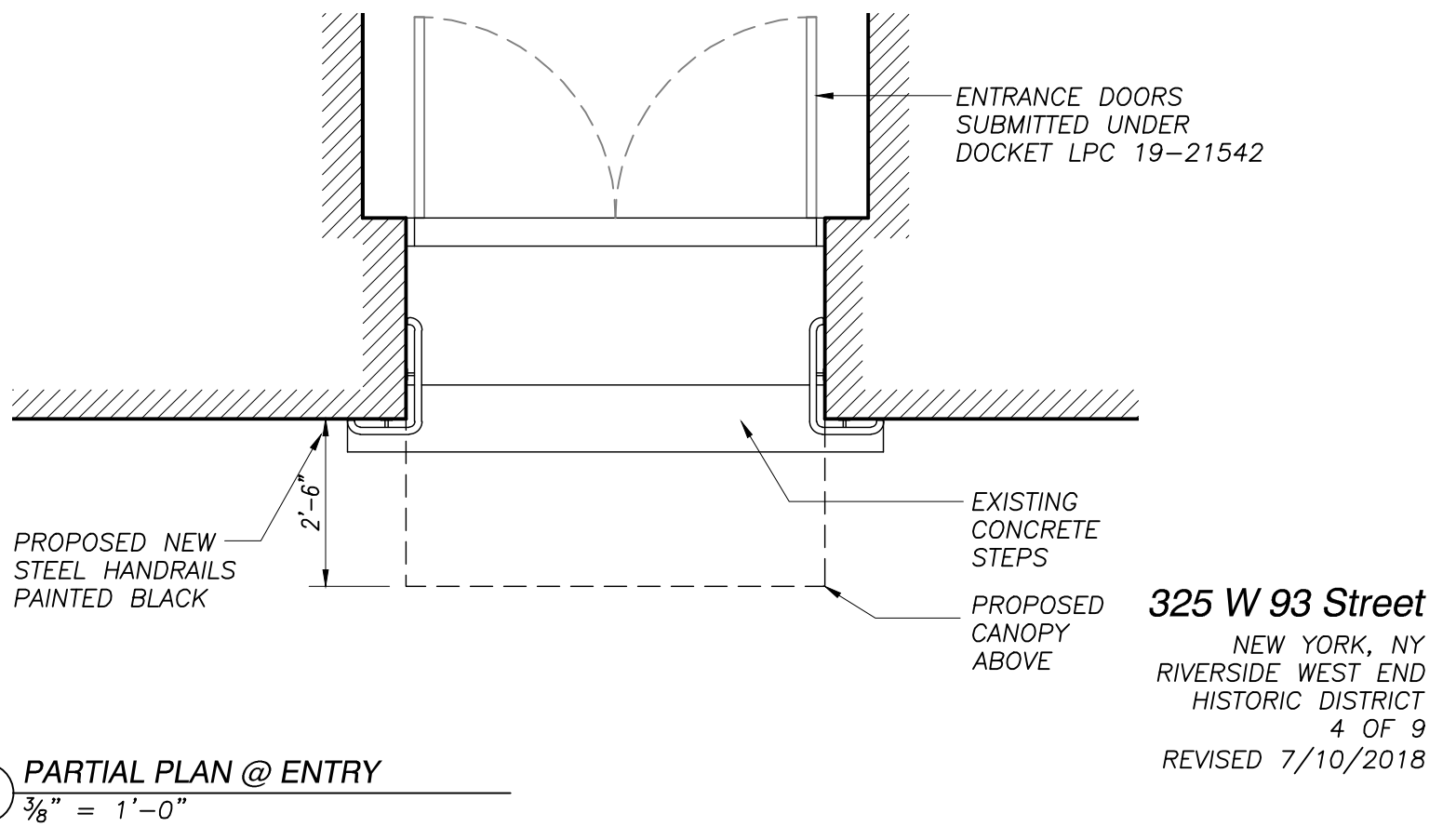
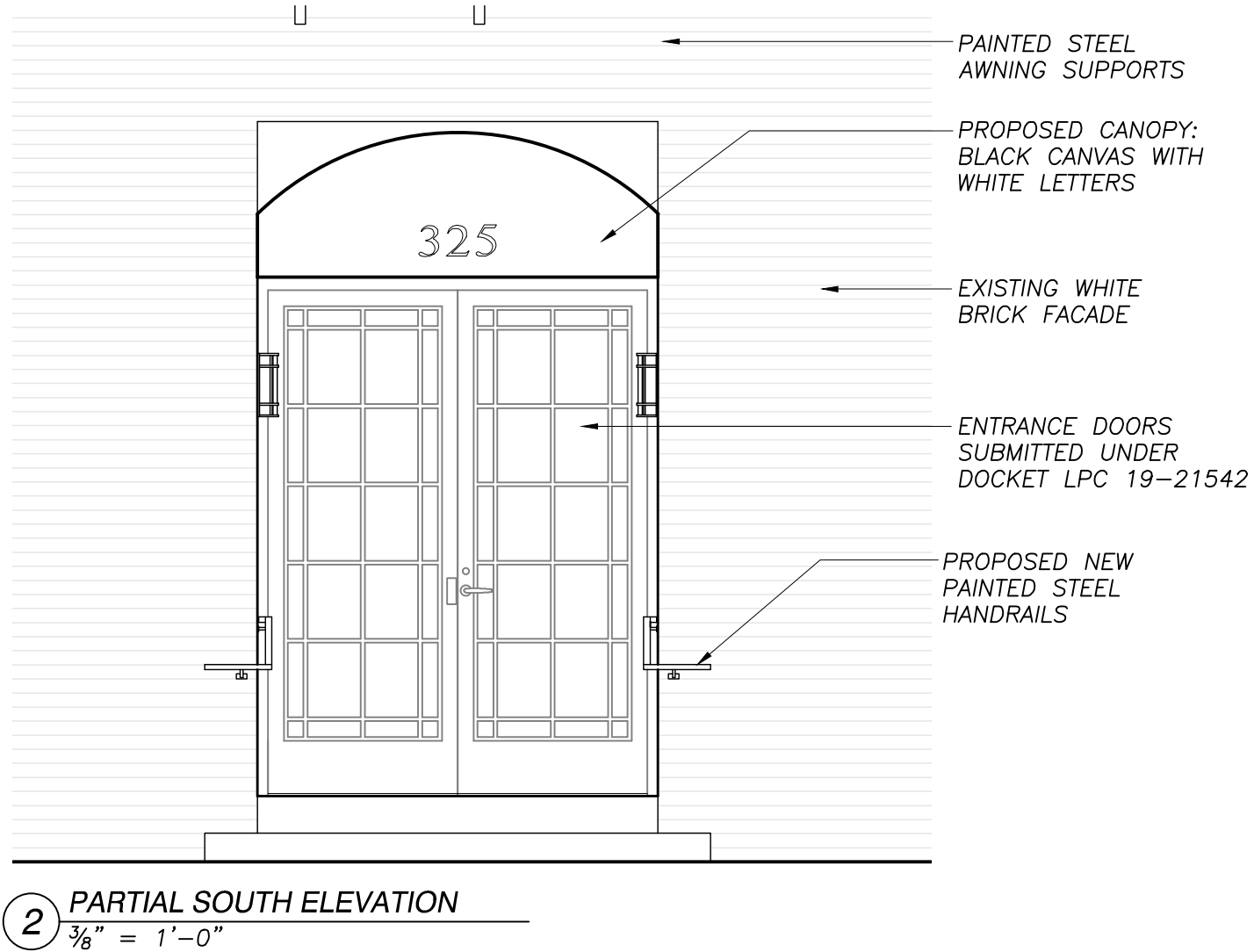
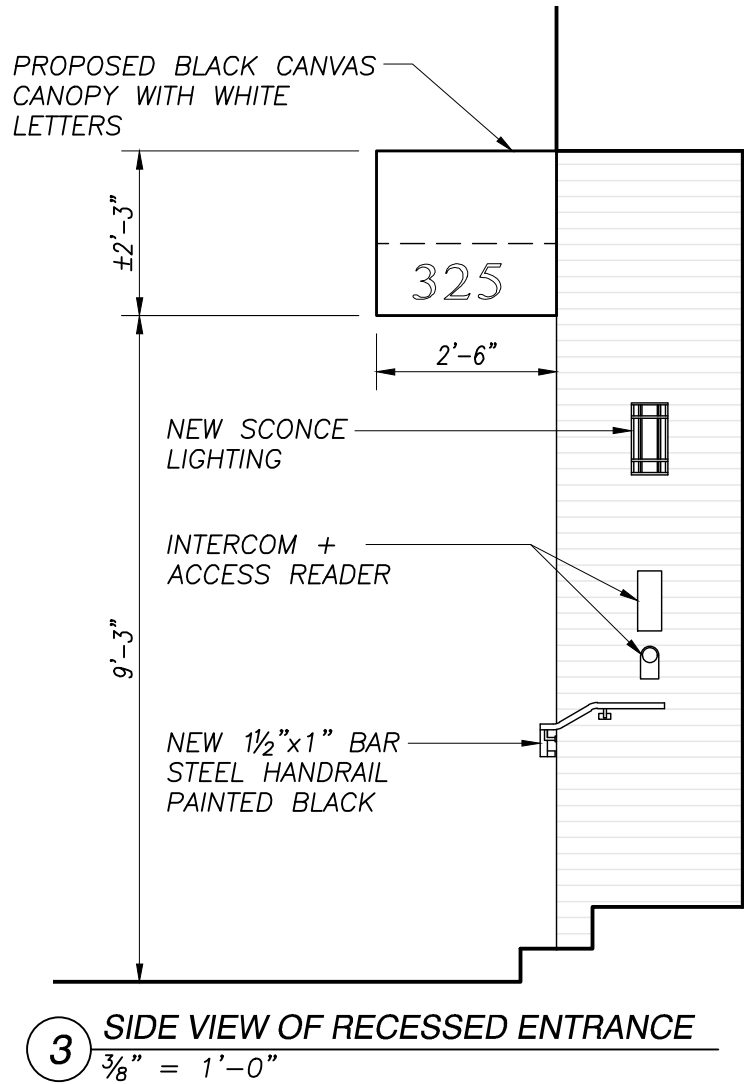
CANOPY AT 310 W94th ST



CANOPY AT 317 W93rd ST



CANOPY AT 311 W83rd ST



325 W 93 Street
NEW YORK, NY
RIVERSIDE WEST END
HISTORIC DISTRICT
4 OF 9
REVISED 7/10/2018



EXISTING FACADE



PROPOSED CANOPY RENDERING

325 W 93 Street
NEW YORK, NY
RIVERSIDE WEST END
HISTORIC DISTRICT
5 OF 9
REVISED 7/10/2018



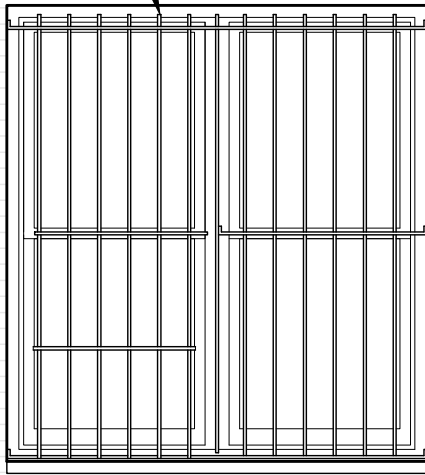
EXISTING ENTRANCE



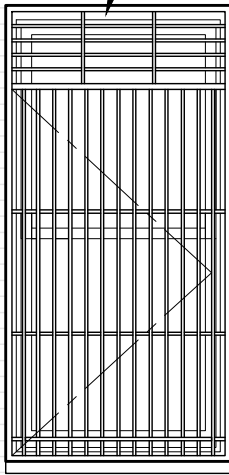
PROPOSED CANOPY RENDERING

325 W 93 Street
 NEW YORK, NY
 RIVERSIDE WEST END
 HISTORIC DISTRICT
 6 OF 9
 REVISED 7/10/2018

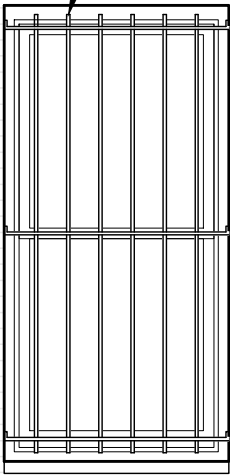
PROPOSED IRON WINDOW
GUARD AND A/C CAGE WITH
BLACK PAINTED FINISH



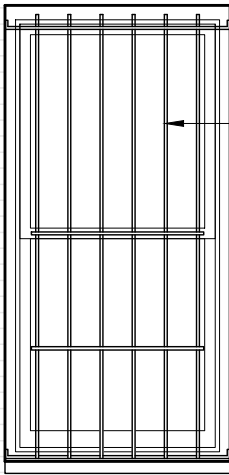
PROPOSED IRON
WINDOW GUARD WITH
BLACK PAINTED FINISH



PROPOSED IRON WINDOW
GUARD AND A/C CAGE
WITH BLACK PAINT FINISH

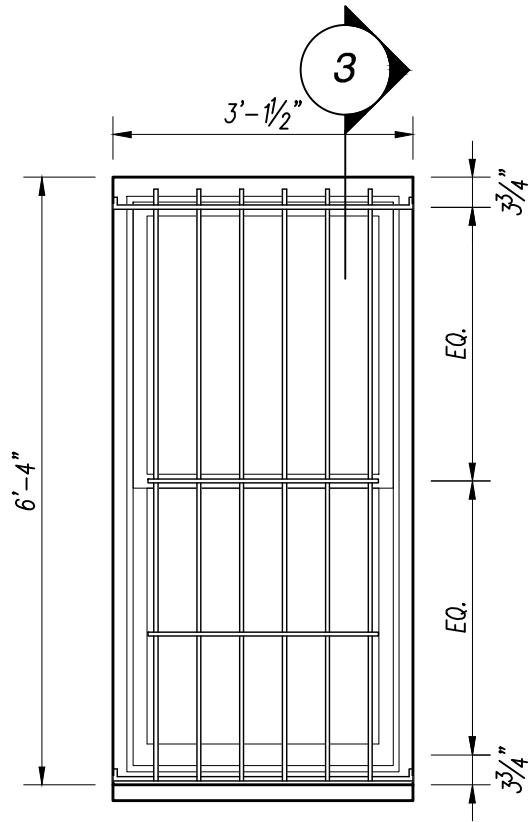


PROPOSED IRON
EXIT GATE WITH
BLACK PAINT FINISH

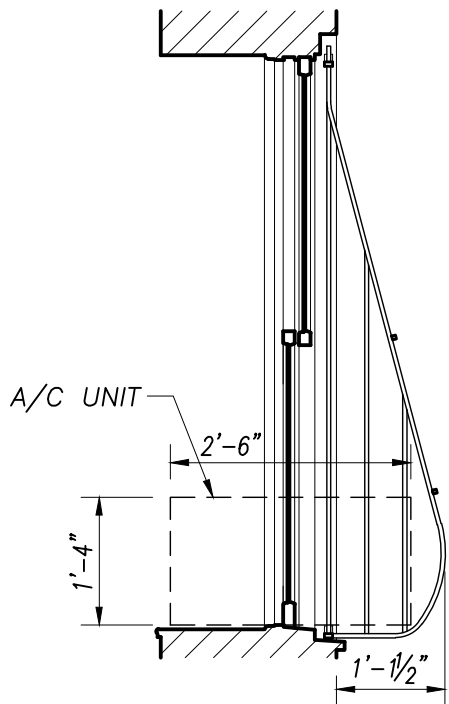


SIDEWALK LEVEL

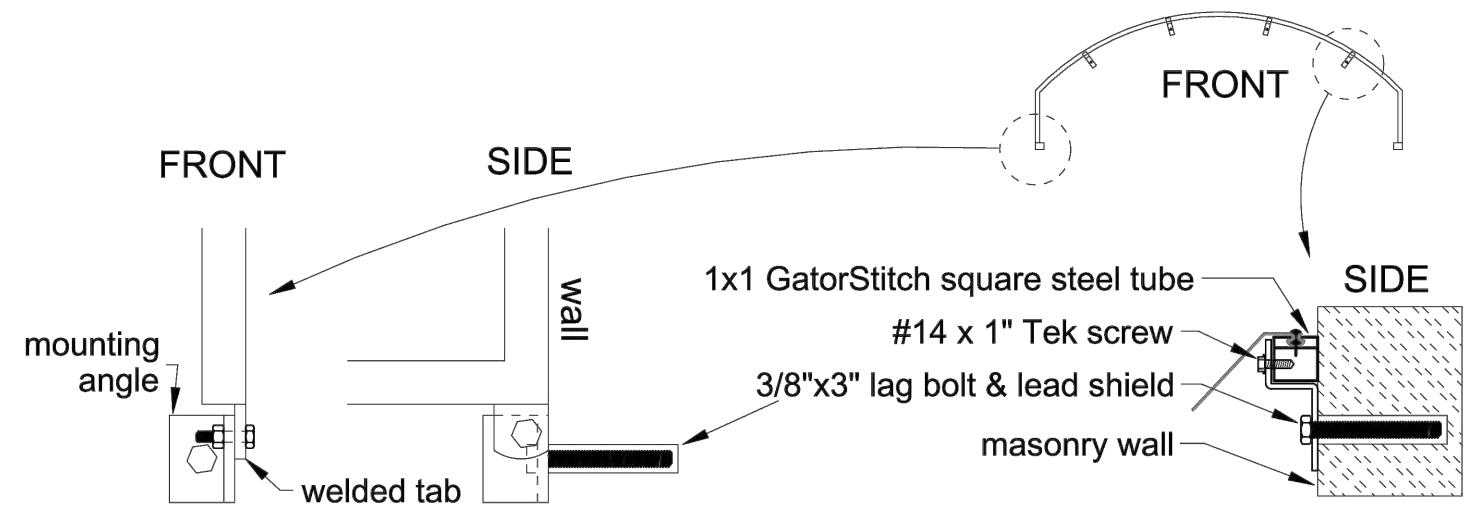
1 PARTIAL SOUTH ELEVATION
 $\frac{3}{8}'' = 1'-0''$



2 TYPICAL WINDOW GUARD
AND A/C CAGE ELEVATION
 $\frac{1}{2}'' = 1'-0''$



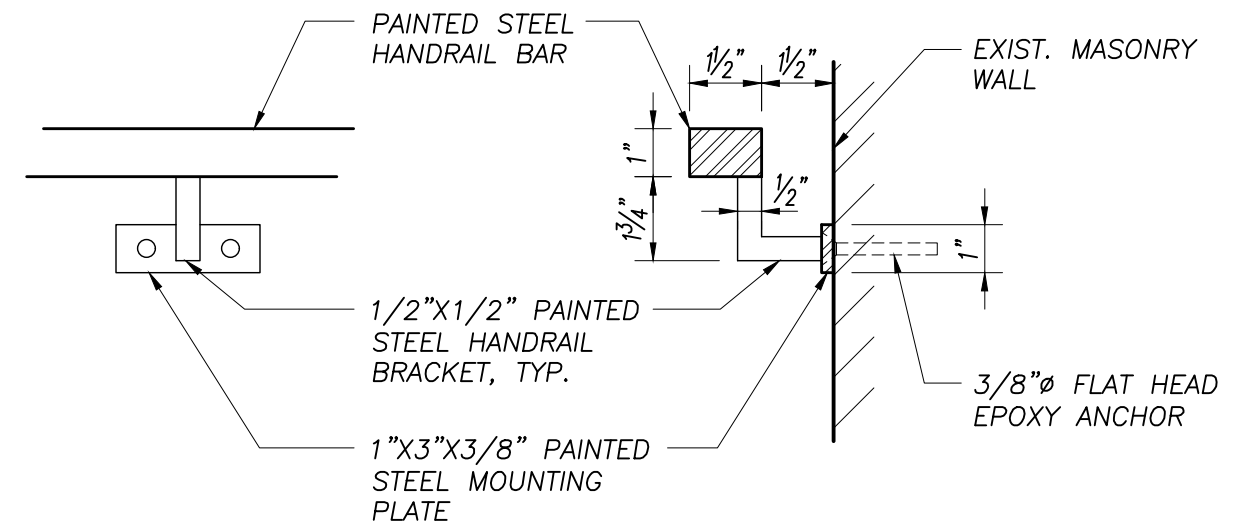
3 TYPICAL WINDOW GUARD
AND A/C CAGE SECTION
 $\frac{1}{2}'' = 1'-0''$



CANOPY LUG INSTALLATION

Z-BRACKET INSTALLATION

2 CANOPY ATTACHMENT DETAILS
NOT TO SCALE



ELEVATION

SECTION

3 HANDRAIL BRACKET DETAILS
3" = 1'-0"



NEW LIGHT SCONCE
MOONRAY BY MAXIM
LIGHTING



EXISTING INTERCOM
PANEL



NEW ACCESS READER
R SERIES BY LATCH