

Janovic

Benjamin Moore

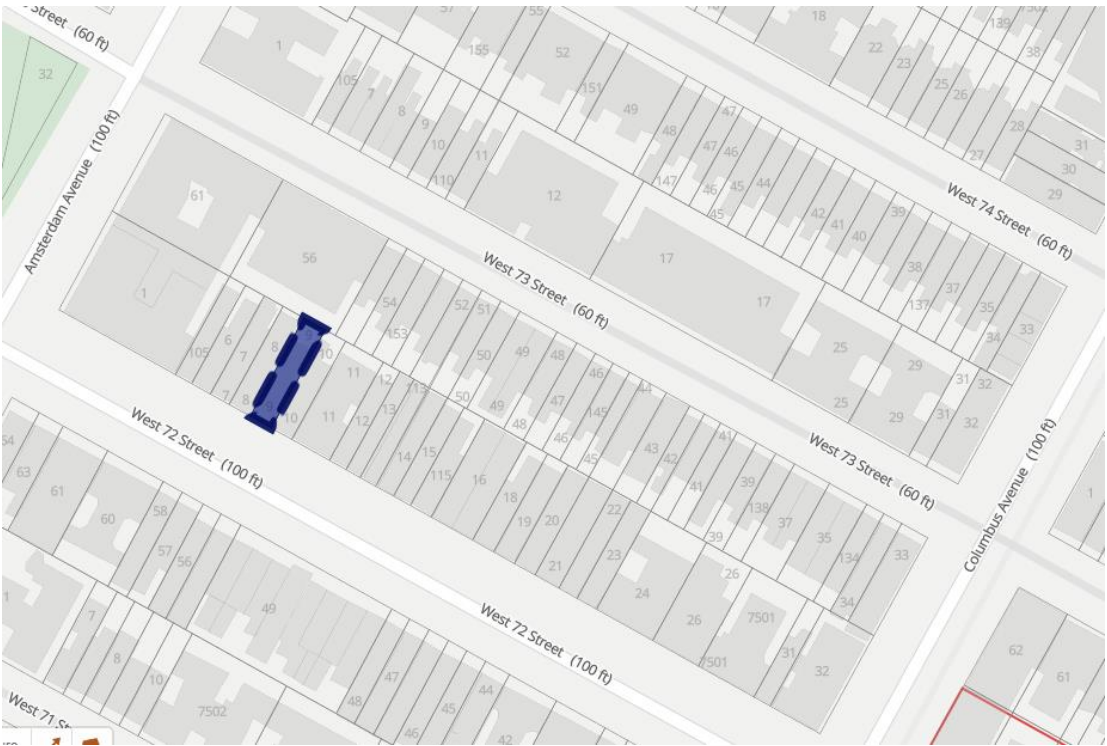
159 West 72nd Street

New York, NY 10023

LPC-19-26058

Janovic Site:
159 W 72nd Street
between Amsterdam Ave
and Columbus Ave

*LPC designation photo circa 1990







Existing



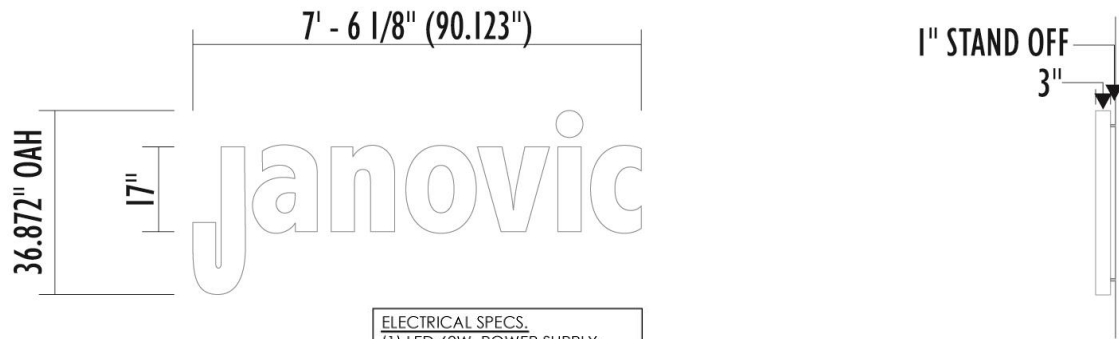
Proposed



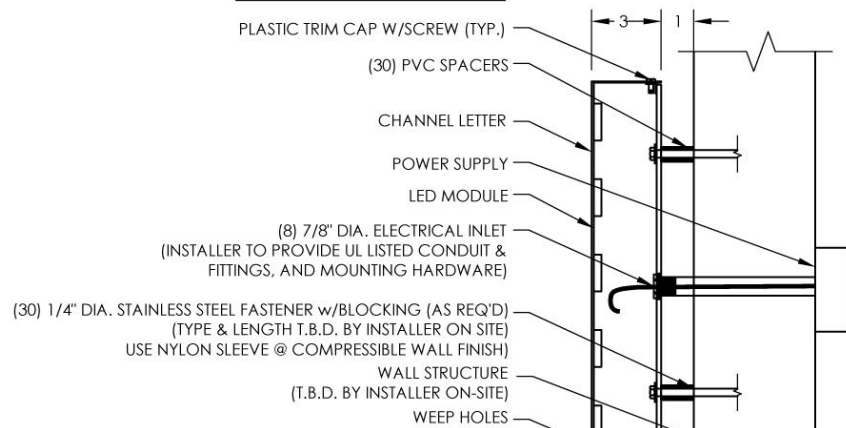
Existing



Proposed



ELECTRICAL SPECS.
 (1) LED 60W, POWER SUPPLY
 0.9 AMPS EACH (INPUT)
 TOTAL (0.9 AMPS) @100-277V
 *USE (1) 20 AMP CIRCUIT



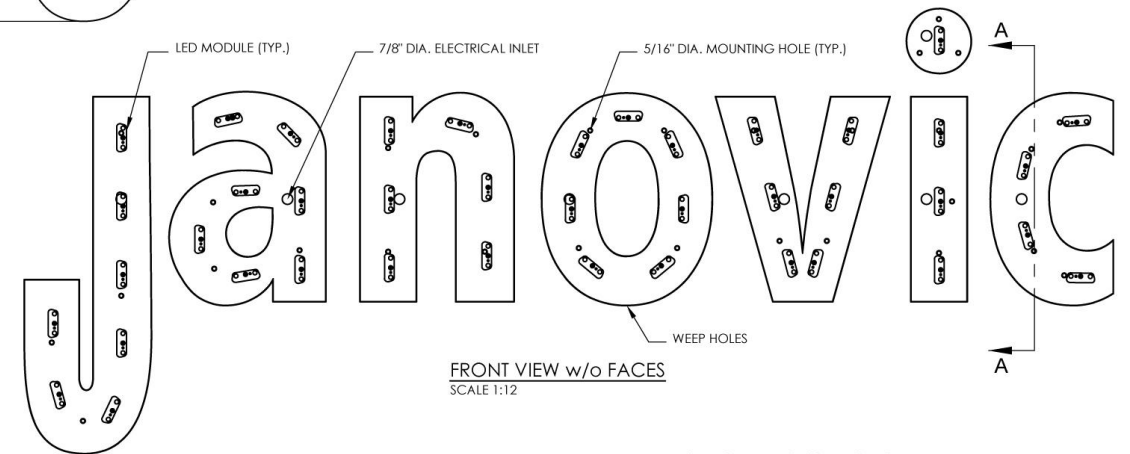
NOTE: DETAIL SHOWN MAY NOT REFLECT THE ACTUAL WALL CONSTRUCTION AS WALL TYPES VARY PER SITE. IT IS THE INSTALLER'S RESPONSIBILITY TO IDENTIFY THE ACTUAL CONSTRUCTION AND ADAPT THE INSTALLATION ACCORDINGLY.

SEAL ALL PENETRATIONS!

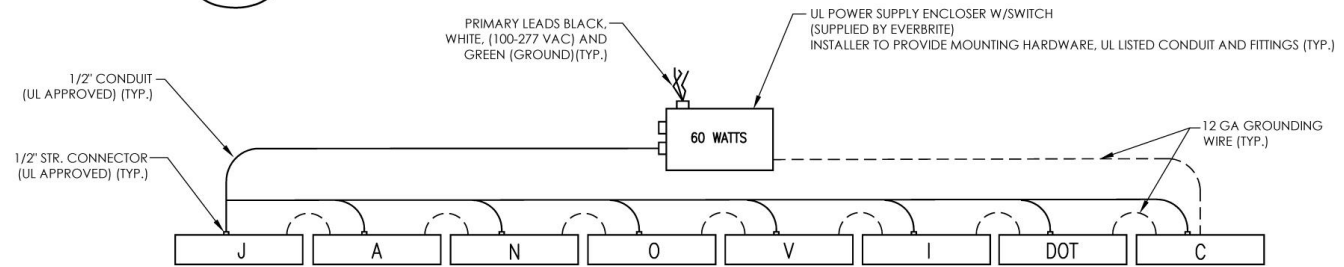
SECTION "A-A"
 SCALE 1:8



FRONT VIEW w/ FACES
 SCALE 1:12



FRONT VIEW w/o FACES
 SCALE 1:12

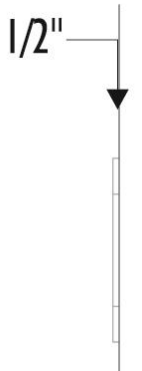
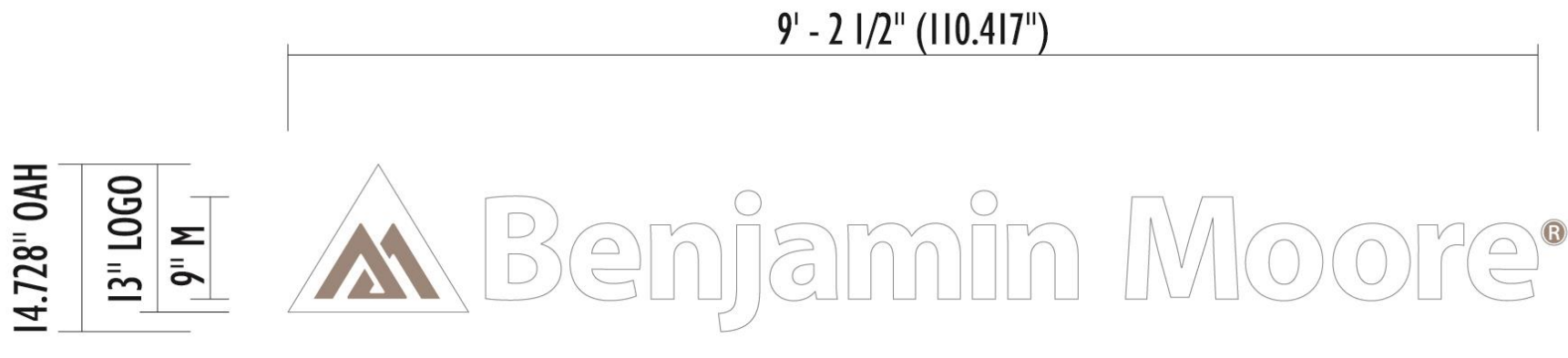


ELECTRICAL DIAGRAM
 SCALE: NONE

Halo Illuminated Reverse Channel Letters

Faces: Aluminum painted BM OC-65 Chantilly Lace
Returns: 3" Deep aluminum painted BM OC-65 Chantilly Lace
Letterbacks: Clear polycarbonate
Illumination: White LEDs
Mounting: To wall at 1" stand off
Notes: _____

Scope of Work: Fabricate and Install One (1) Set of Halo Illuminated Reverse Channel Letters.



Non Illuminated Acrylic FCOs

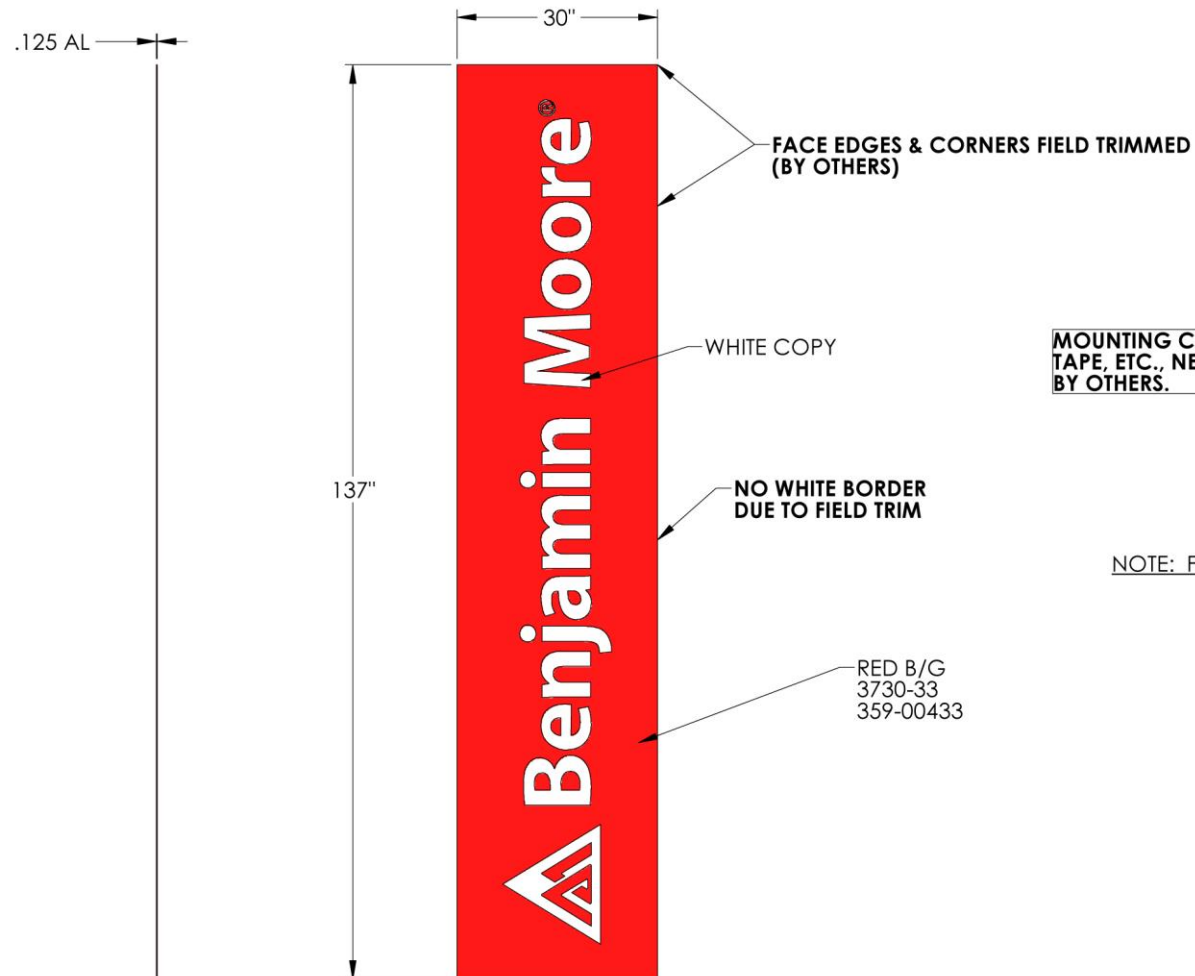
Material: 1/2" Thick acrylic; All exposed surfaces to match BM OC-65 Chantilly Lace

Vinyl: 3630-71 Shadow Gray (Logo)

Mounting: Flush to wall using studs or best method

Notes: _____

Scope of Work: Fabricate and Install One (1) Set of Non Illuminated Acrylic FCOs.



MOUNTING CLIPS, FASTENERS, SCREWS,
TAPE, ETC., NECESSARY TO INSTALL SIGN
BY OTHERS.

NOTE: FIRST SURFACE VINYL

DF Non Illuminated Blade Sign - Replacement Faces

Face: 1/8" Aluminum w first surface vinyl graphics

Colors: 3730-33 Red; Leave 1 1/2" White border

Frame: Existing; No request to repair, refurbish, or repaint

Mounting: Flush to exiting frame using best method

Notes: Alternate face decoration so that Janovic graphics are seen first
when approaching store from either direction from the sidewalk;
Leave faces square; Installer will trim to fit in field

Scope of Work: Fabricate and Install Four (4) Replacement Faces
for Two (2) DF Non Illuminated Blade Signs.

