

1 EXISTING STOREFRONT ELEVATION (BROADWAY)
LPC-01 Scale: NTS

adg
ADG Architecture & Design P.C.
13 West 36th Street, 7th Floor
New York, New York, 10018
(P) 212.777.6880
(F) 212.979.0818

All rights reserved. All drawings, specifications and copies thereof furnished are and shall remain the property of ADG Architecture & Design P.C. and are not to be used on this or any other project without written consent from ADG Architecture & Design P.C.

Community Board 7
Storefront Renovation
October 02, 2018

2309 Broadway
New York, NY 10024

LPC-01



1 | C1940HISTORIC CONDITIONS (MUNICIPAL ARCHIVES)
LPC-02 | Scale: NTS



2 | C1941HISTORIC CONDITIONS (IN STREETSCAPES NY TIMES)
LPC-02 | Scale: NTS



3 | 1980S HISTORIC CONDITIONS (IN ALONG BROADWAY)
LPC-02 | Scale: NTS



4 | 2012 (LPC)
LPC-02 | Scale: NTS



1 | EXISTING CONDITIONS
LPC-03 | Scale: NTS



2 | EXISTING CONDITIONS
LPC-03 | Scale: NTS



1 EXISTING CONDITIONS
LPC-04 Scale: NTS

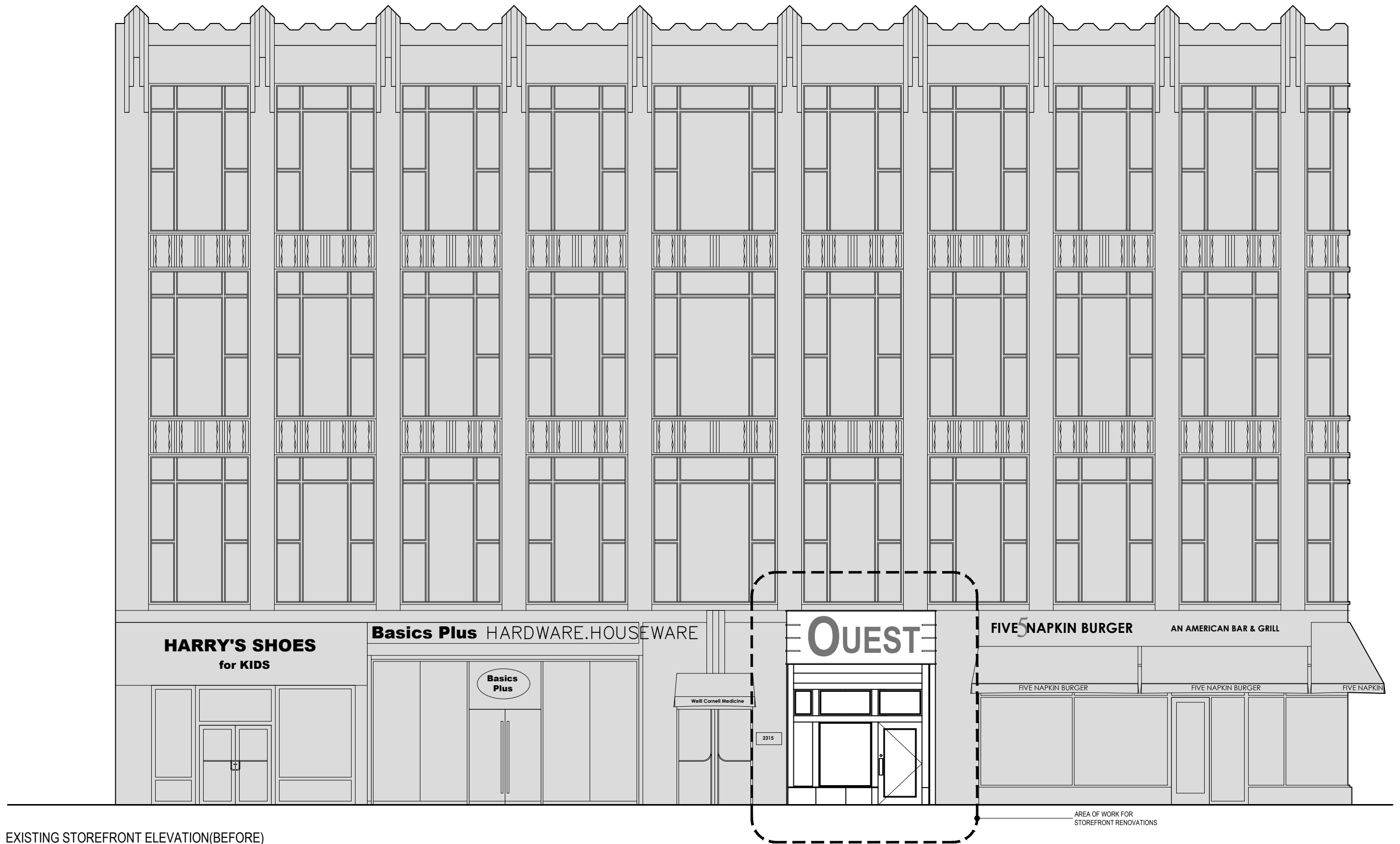
adg
ADG Architecture & Design P.C.
13 West 36th Street, 7th Floor
New York, New York, 10018
(P) 212.777.6880
(F) 212.979.0818

All rights reserved. All drawings, specifications and copies thereof furnished are and shall remain the property of ADG Architecture & Design P.C. and are not to be used on this or any other project without written consent from ADG Architecture & Design P.C.

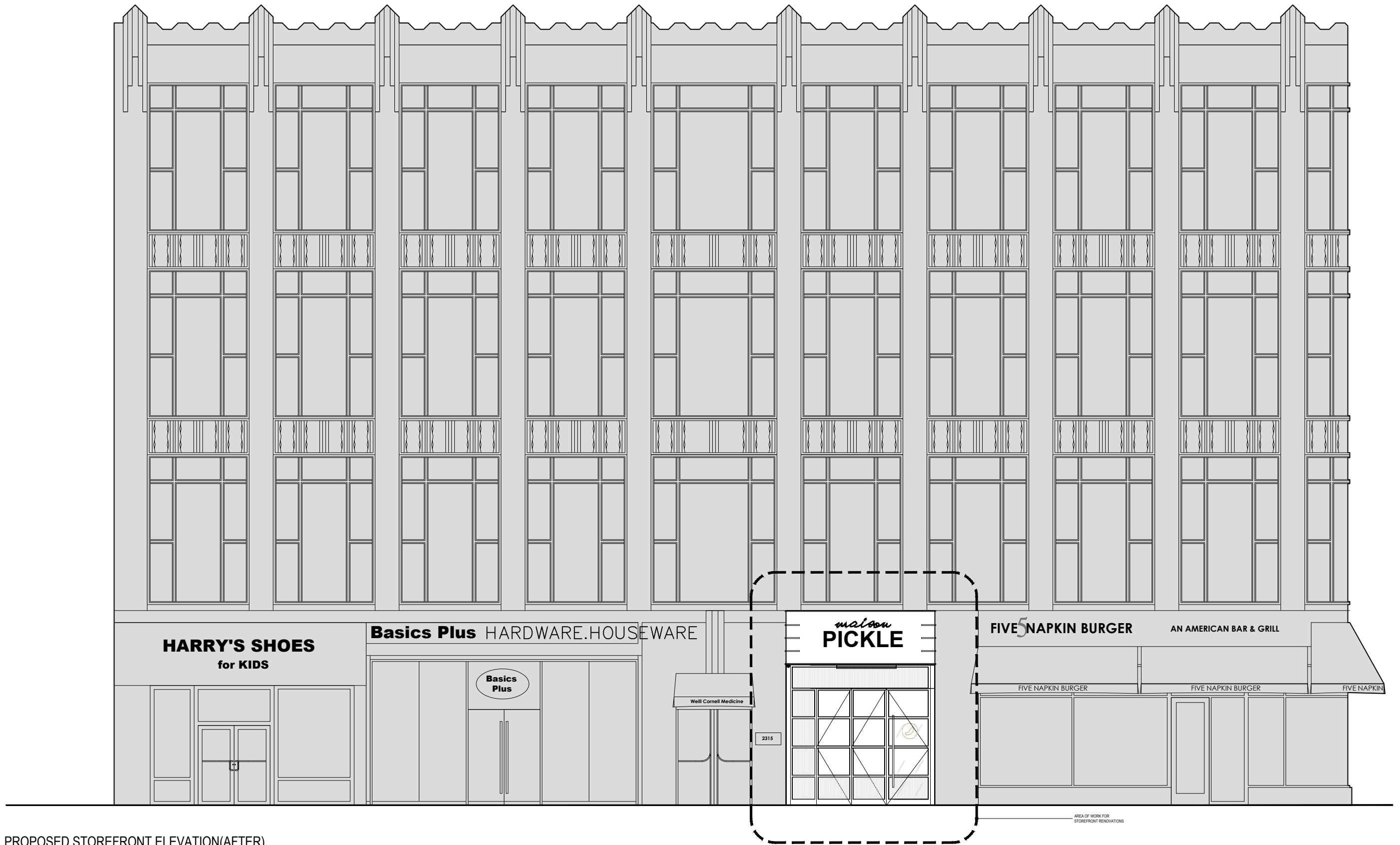
Existing Conditions

2309 Broadway
New York, NY 10024

LPC-04



1 | EXISTING STOREFRONT ELEVATION(BEFORE)
LPC-05 | Scale: 1/8"= 1'-0"



1 | PROPOSED STOREFRONT ELEVATION(AFTER)
LPC-06 | Scale: 1/8"= 1'-0"



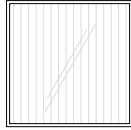
1 EXISTING STOREFRONT
LPC-07 Scale: NTS



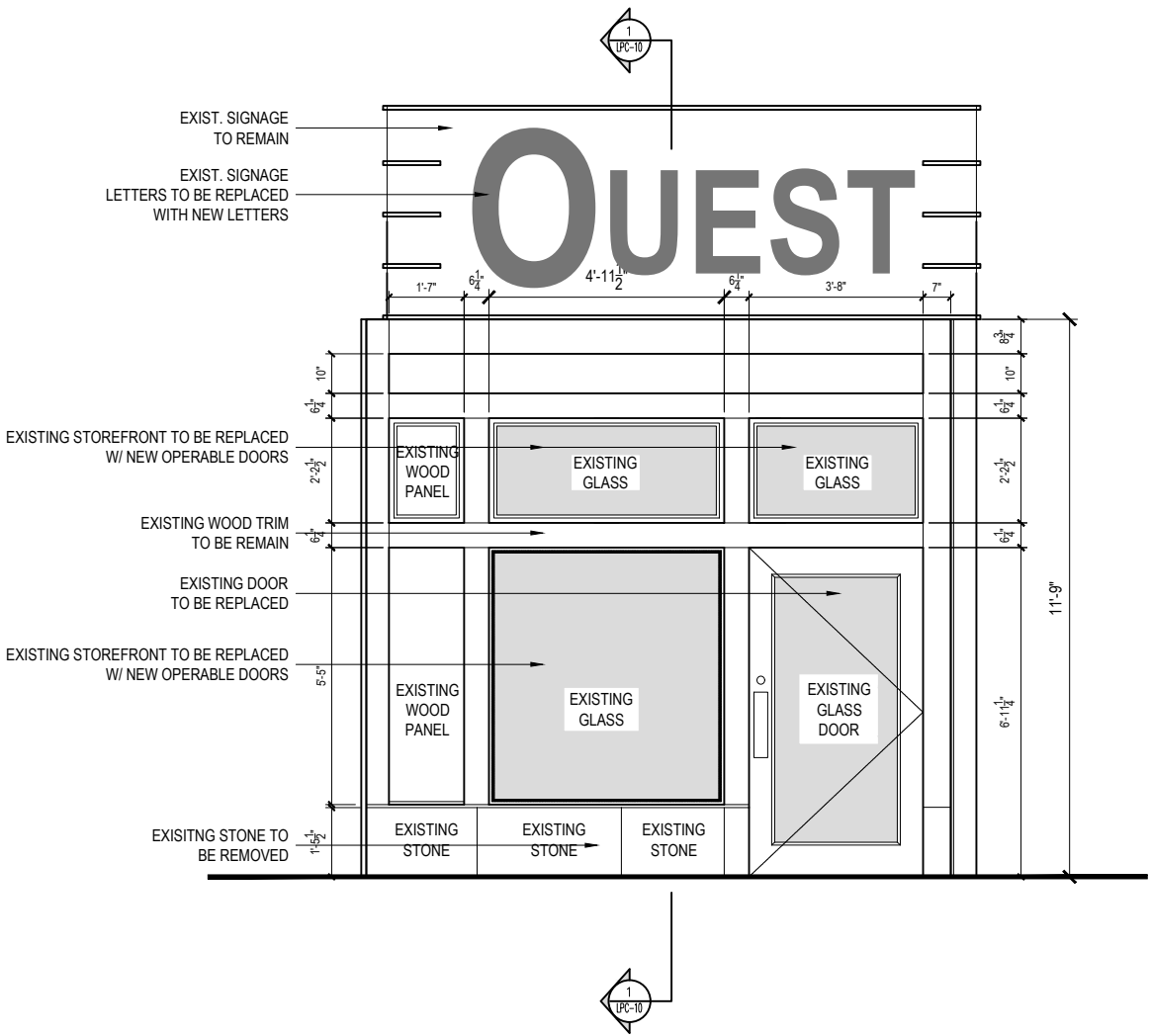
2 PROPOSED STOREFRONT
LPC-07 Scale: NTS



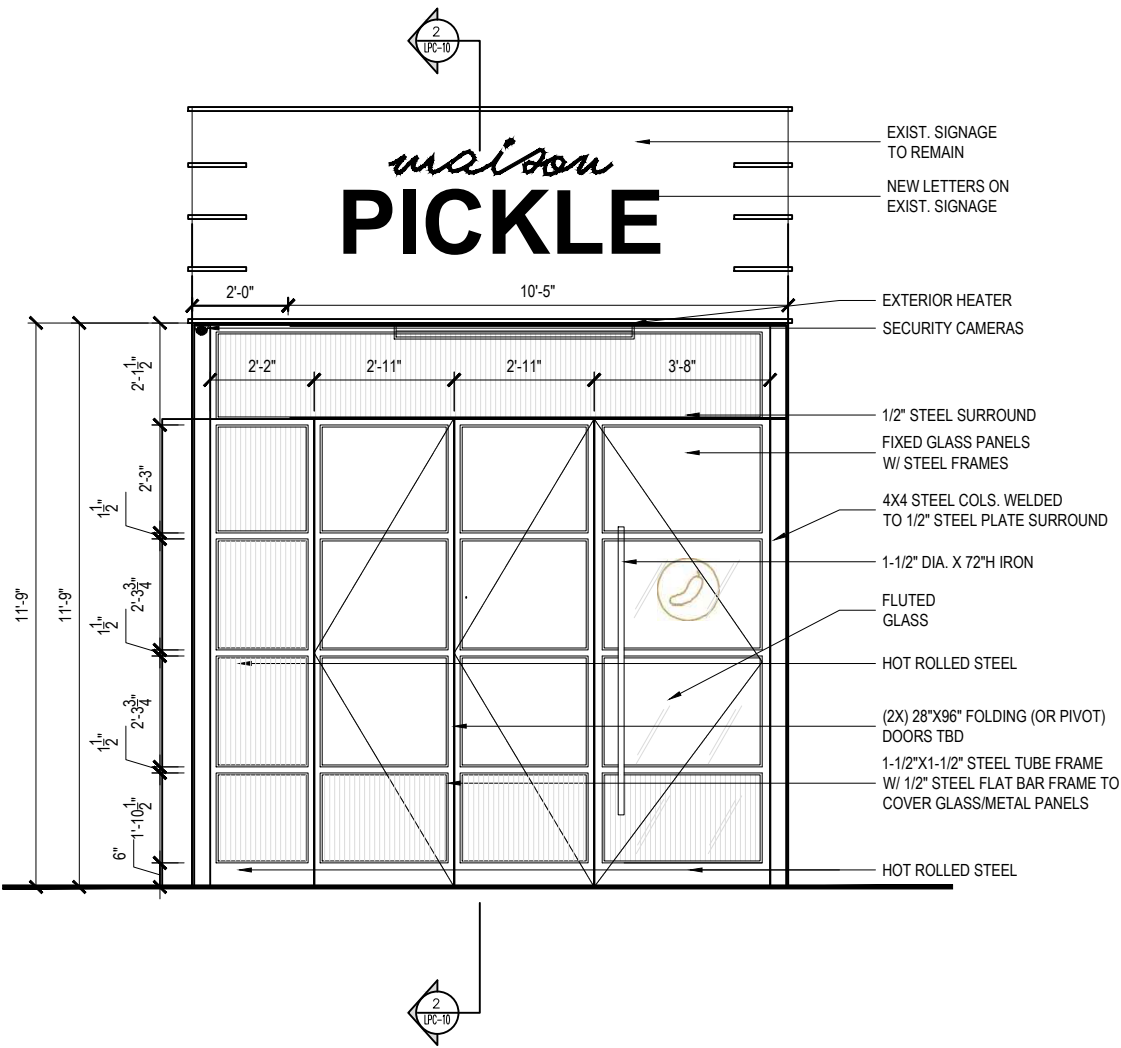
CLEAR GLASS



FLUTED GLASS

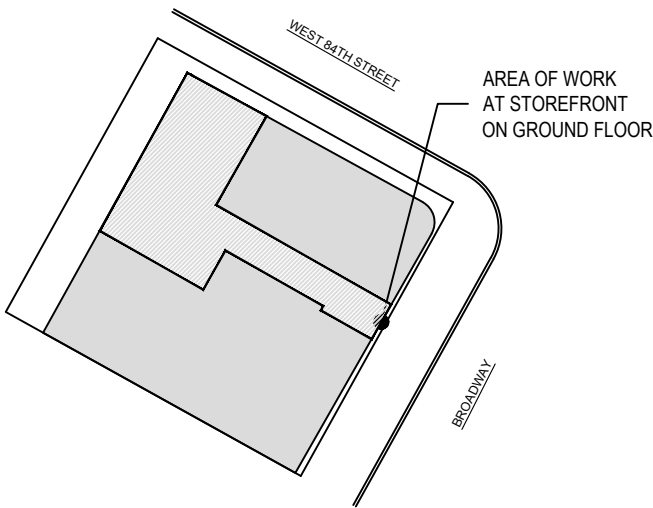


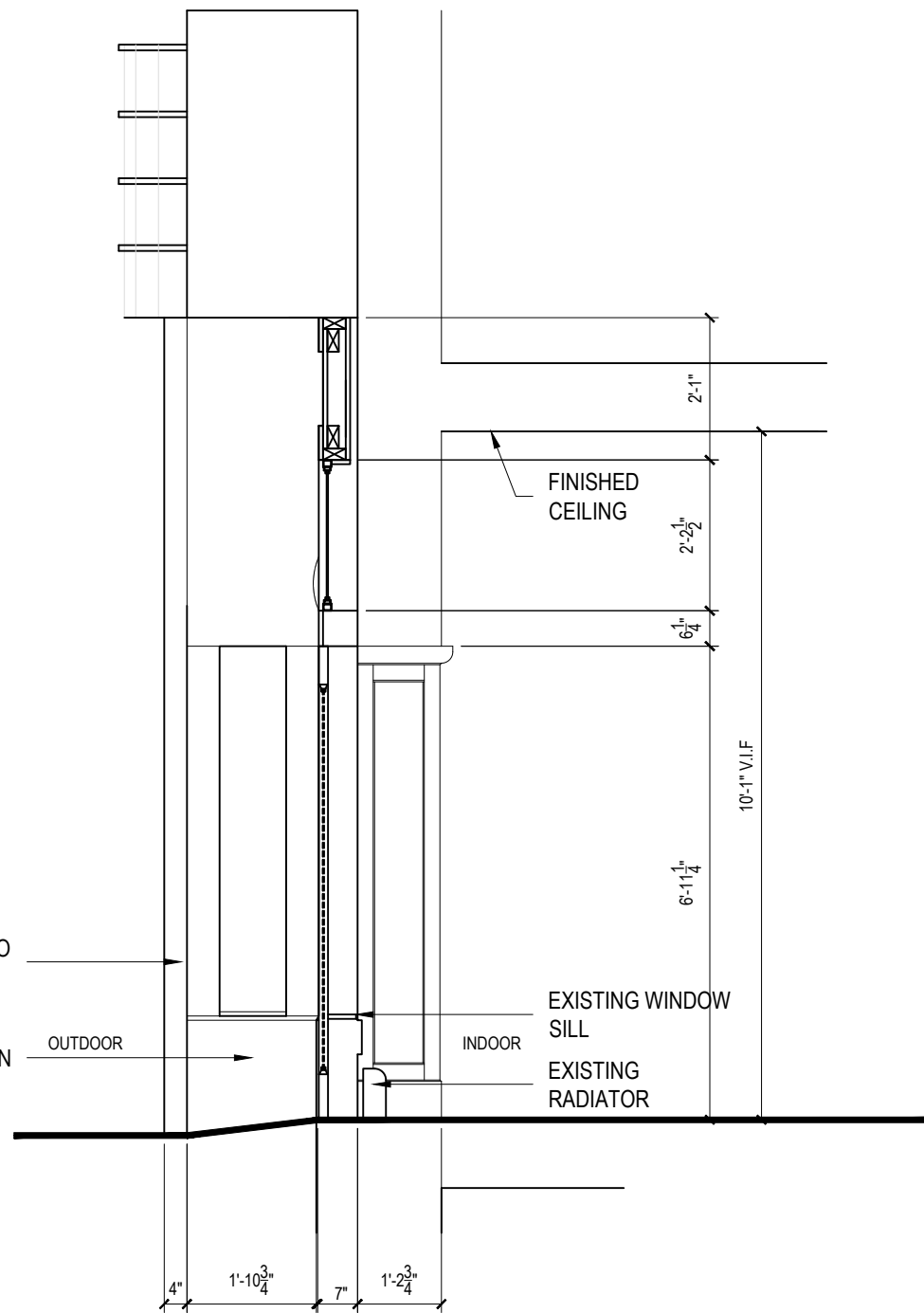
1 | EXISTING STOREFRONT ELEVATION (BROADWAY)
LPC-08 | Scale: 1/4"= 1'-0"



2 | PROPOSED STOREFRONT ELEVATION (BROADWAY)
LPC-08 | Scale: 1/4"= 1'-0"

3 | PROPOSED STOREFRONT MATERIALS
LPC-08 | Scale: NTS





1 | EXISTING STOREFRONT SECTION (BROADWAY)

LPC-09 | Scale: 3/8" = 1'-0"

SECURITY CAMERAS TO BE MOUNTED TO UNDERSIDE OF EXISTING MARQUEE SIGN

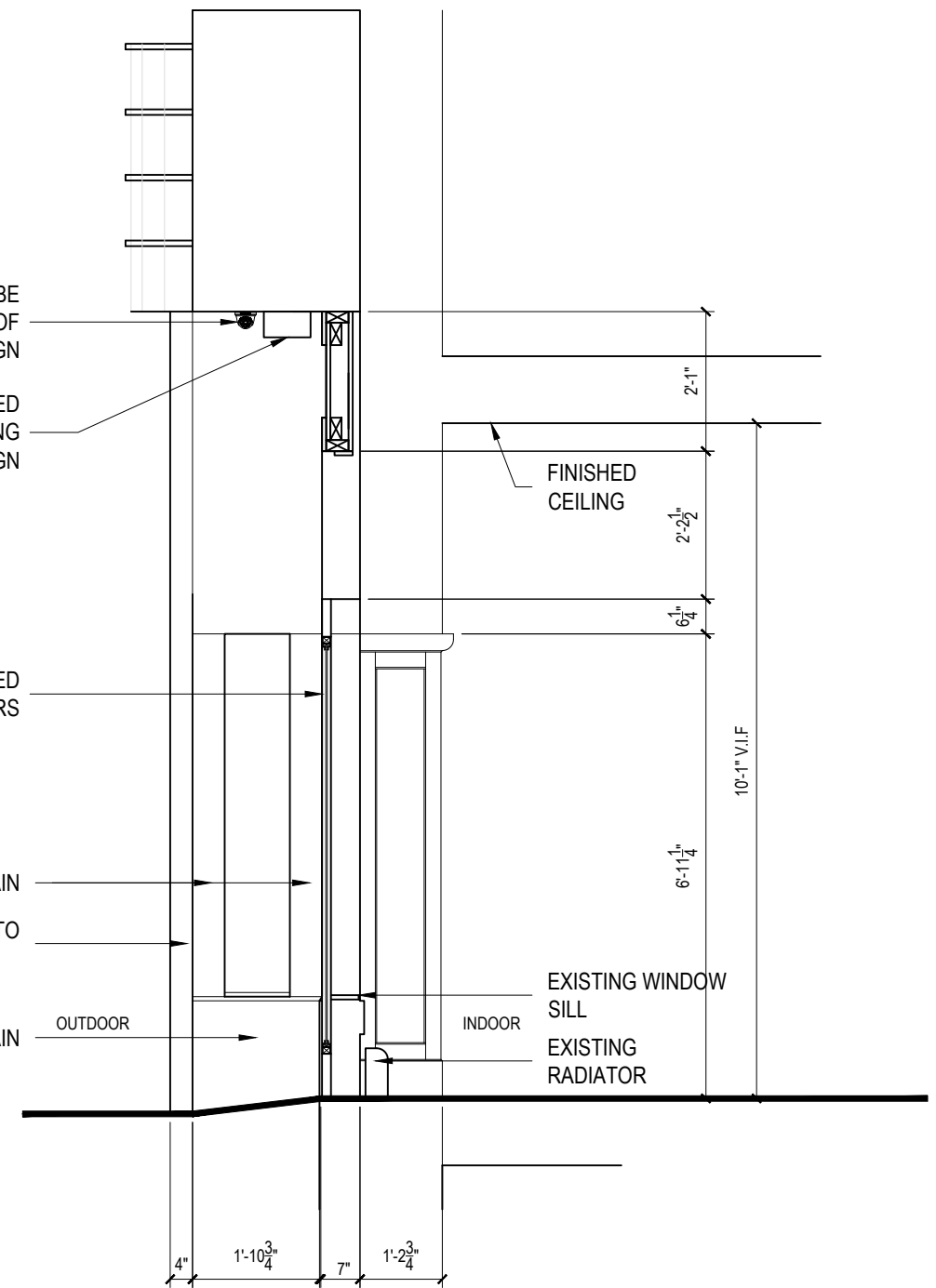
EXTERIOR HEATED TO BE MOUNTED TO UNDERSIDE OF EXISTING MARQUEE SIGN

EXISTING STOREFRONT TO BE REPLACED W/ NEW OPERABLE DOORS

EXISTING WOOD TRIM TO REMAIN

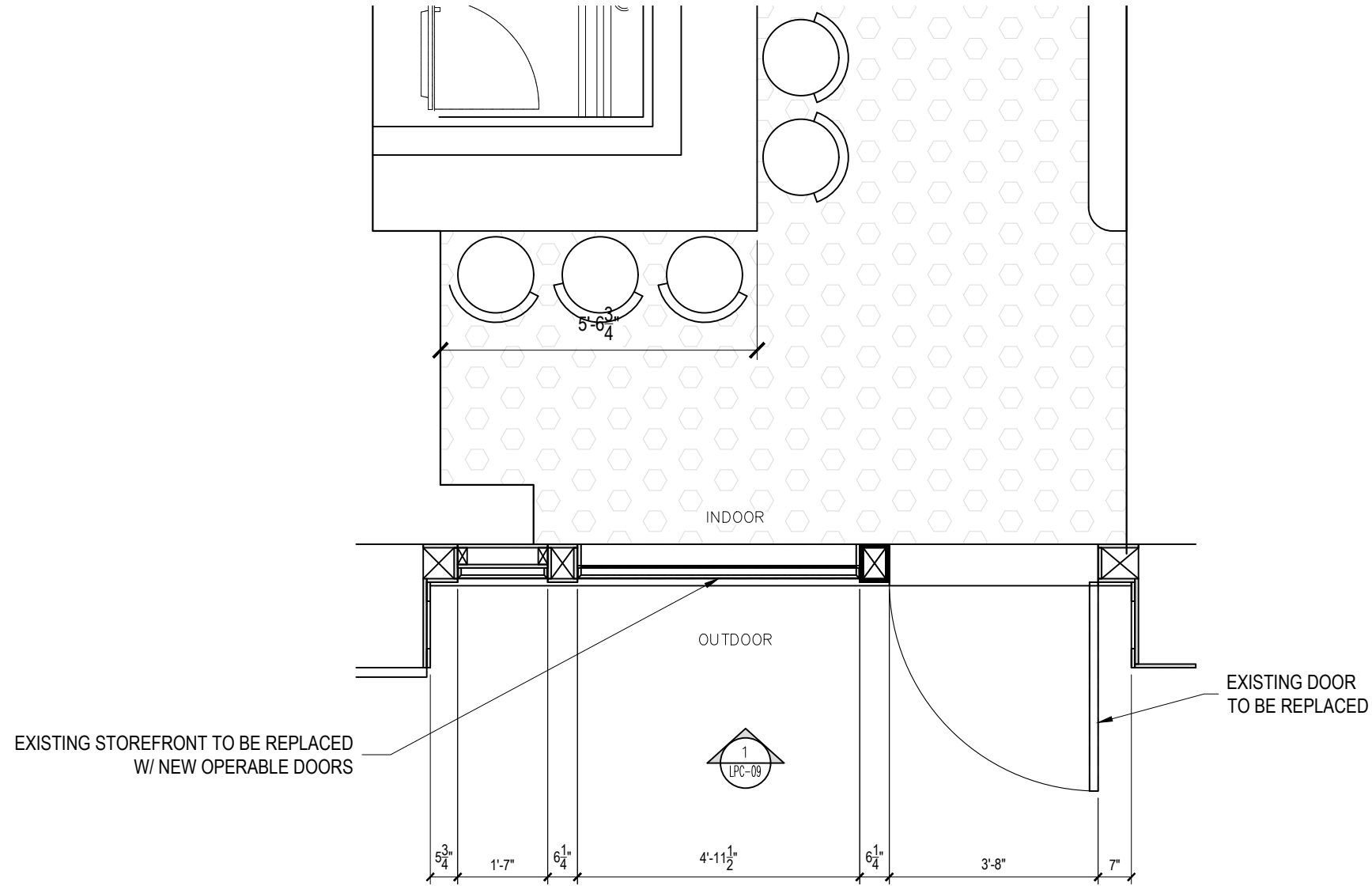
EXISTING STONE FASCIA BEYOND TO REMAIN

EXISTING WOOD TRIM TO REMAIN

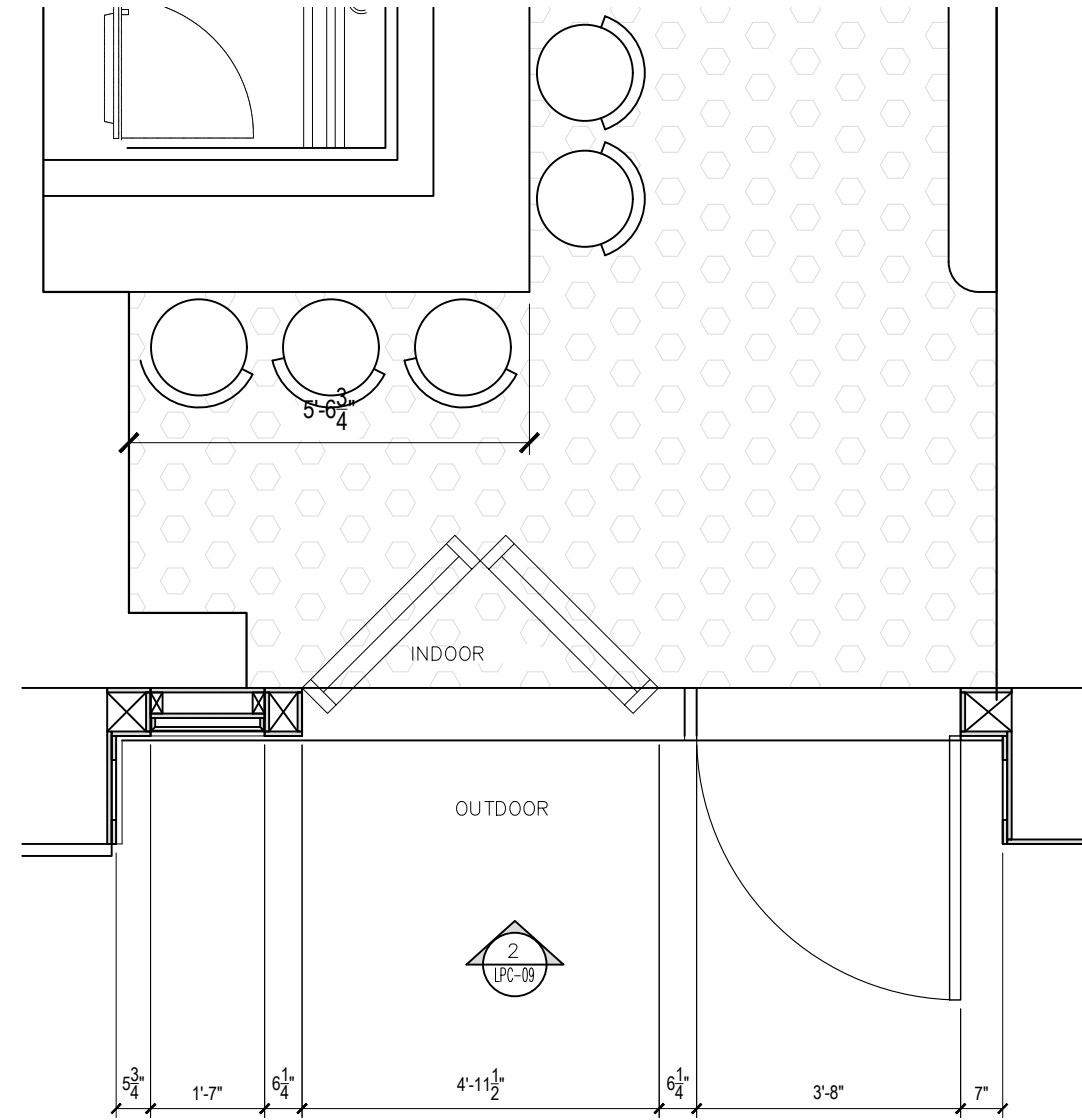


2 | PROPOSED STOREFRONT SECTION (BROADWAY)

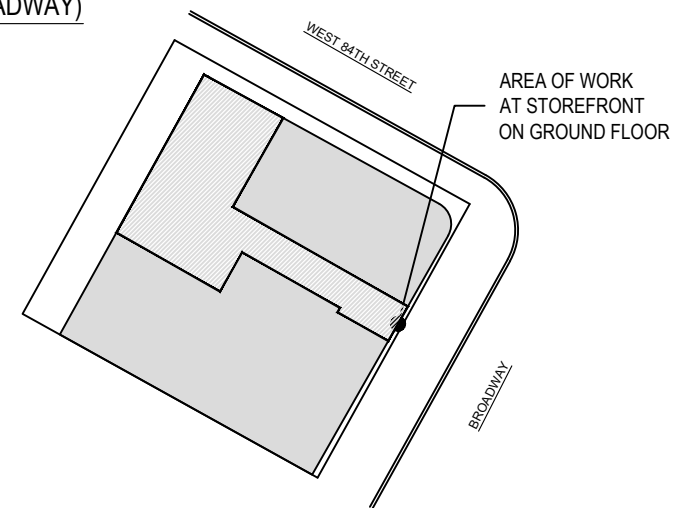
LPC-09 | Scale: 3/8" = 1'-0"

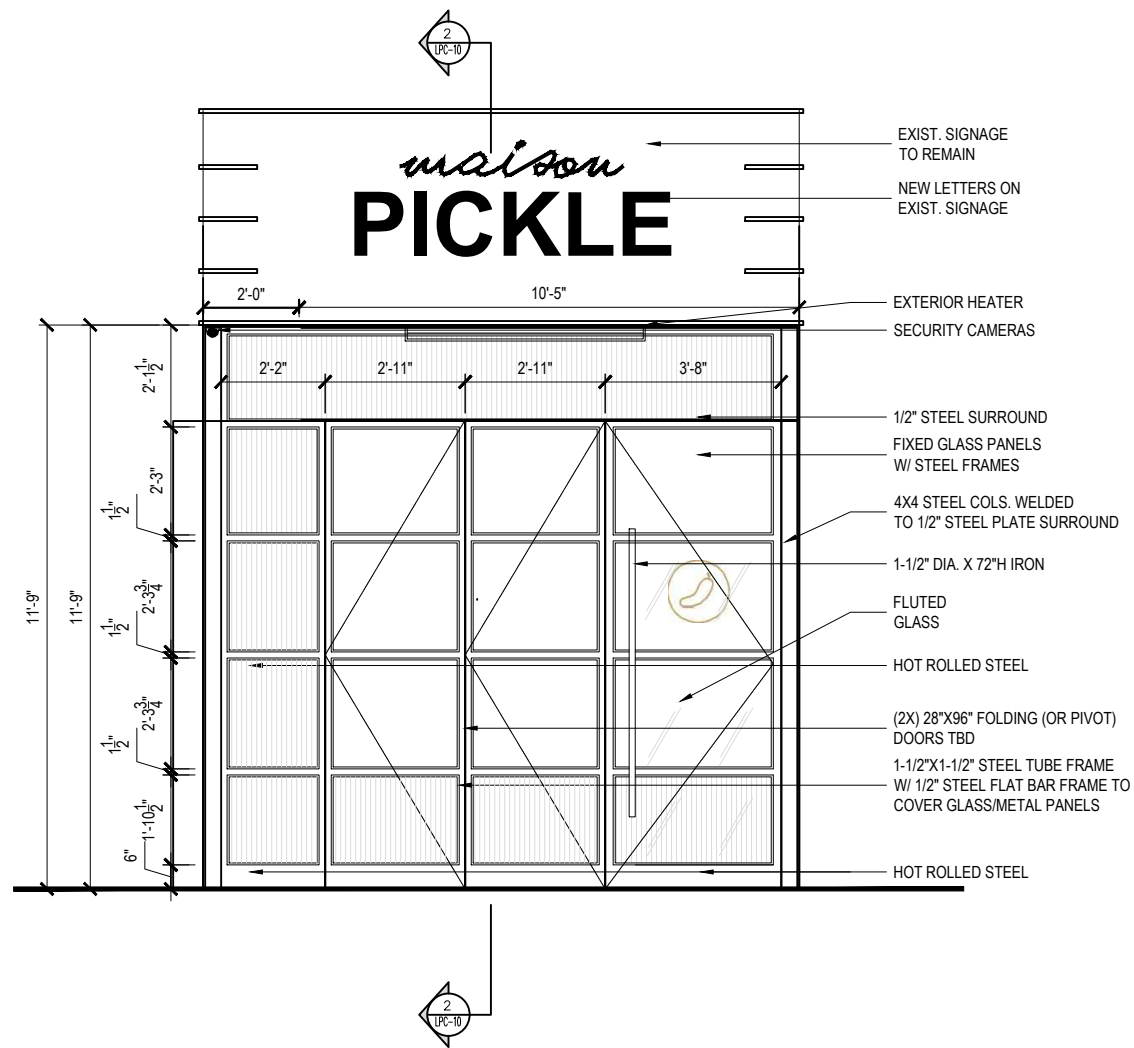


1 | EXISTING GROUND FLOOR ENTRY PLAN (BROADWAY)
LPC-10 | Scale: 3/8"= 1'-0"



2 | PROPOSED GROUND FLOOR ENTRY PLAN (BROADWAY)
LPC-10 | Scale: 3/8"= 1'-0"

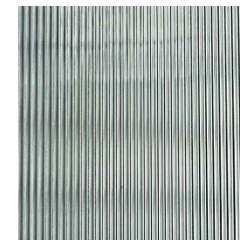




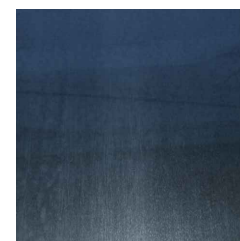
1 | PROPOSED STOREFRONT ELEVATION(BROADWAY)
LPC-11 | Scale: 1/4"= 1'-0"



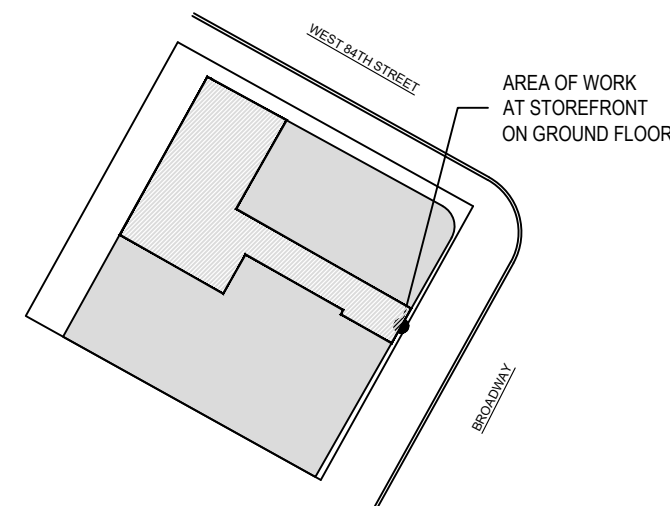
2 | PROPOSED STOREFRONT RENDERING (BROADWAY)
LPC-11 | Scale: NTS



3 | PROPOSED TEXTURED GLASS
LPC-11 | Scale: NTS



4 | PROPOSED HOT ROLLED STEEL
LPC-11 | Scale: NTS

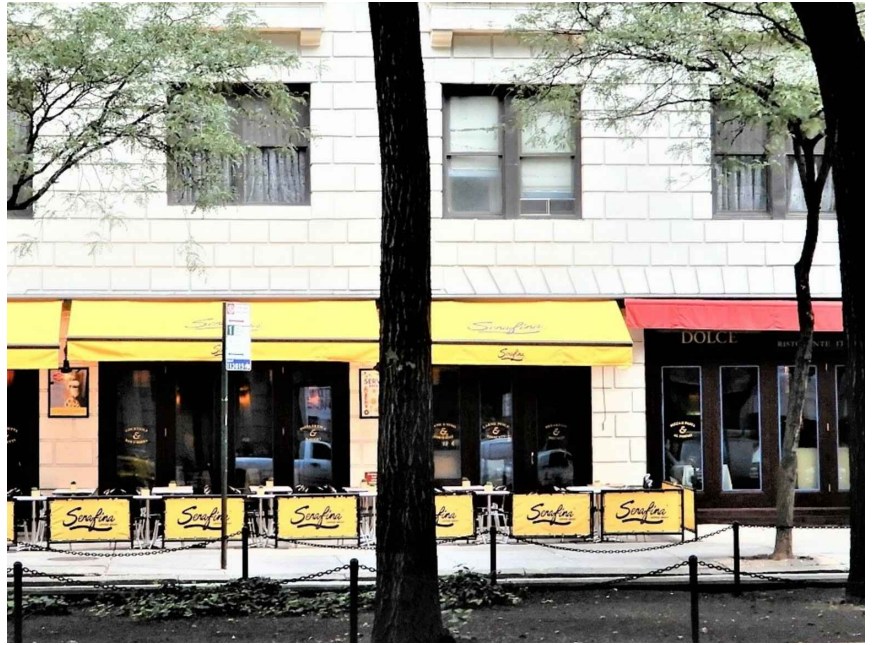




1 | 2020 BROADWAY, 69TH-70TH STREET (UPPER WEST SIDE/CPW)
LPC-12 | Scale: NTS



2 | 2167 BROADWAY, 76TH-77TH STREET (WEST END COLLEGIATE EXTENSION 1)
LPC-12 | Scale: NTS



3 | 2178 BROADWAY, 76TH-77TH STREET (ACROSS FROM DISTRICT)
LPC-12 | Scale: NTS



4 | 2309 BROADWAY AT 84TH STREET (84TH ST SIDE OF MAISON PICKLE)
LPC-12 | Scale: NTS



5 | 349 AMSTERDAM AVE, 76TH-77TH STREET (UPPER WEST SIDE/CPW)
LPC-12 | Scale: NTS



6 | 410-12 AMSTERDAM AVE, 79TH-80TH STREET (UPPER WEST SIDE/CPW)
LPC-12 | Scale: NTS



1 | PROPOSED STOREFRONT RENDERING (BROADWAY)
LPC-13 | Scale: NTS