

**Proposed Sidewalk
313 Columbus Avenue
Upper West Side
Historic District**



**Historic Photo
Storefront
313 Columbus Ave.**



**Existing Sidewalk
313 Columbus Avenue
Upper West Side
Historic District**



**Existing Storefronts
313 Columbus Avenue
Upper West Side
Historic District**

**Monty Mitchell AIA /
George R. Mitchell P.C.**
21 - 27 45 th Avenue
Long Island City, N.Y. 11101
Phone: 718 786 5165
Fax: 718 786 6215

SCAN NUMBER	
JOB NUMBER	
REVISION	DATE
	3/1/19
DATE	MARCH 14, 2019
SCALE	AS NOTED
DRAWN BY	
DESCRIPTION	STOREFRONT PHOTOS
TITLE	313 COLUMBUS AVENUE NEW YORK, NEW YORK
SEAL	DRAWING L-000.00

Monty Mitchell AIA /
George R. Mitchell P.C.
21 - 27 45 th Avenue
Long Island City, N.Y. 11101
Phone: 718 786 5165
Fax: 718 786 6215



Existing Ramp
260 Columbus Ave.
Upper West Side
Historic District

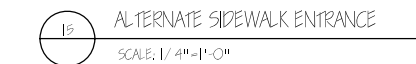
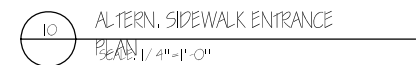


Existing Ramp
105 West 72nd Street
Upper West Side
Historic District

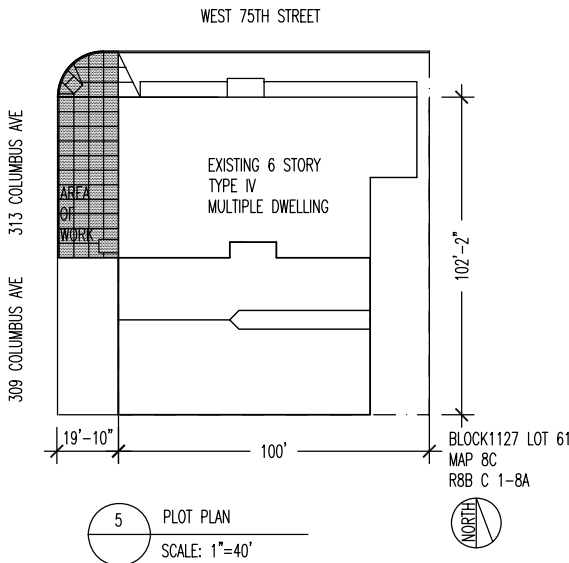


Existing Ramp
210 Columbus Avenue
Upper West Side
Historic District

SCAN NUMBER		
JOB NUMBER		
REVISION	DATE	
	3/1/19	
DATE	MARCH 14, 2019	
SCALE	AS NOTED	
DRAWN BY		
DESCRIPTION	STOREFRONT PHOTOS	
TITLE	313 COLUMBUS AVENUE NEW YORK, NEW YORK	
SEAL	DRAWING	L-005.00



SCAN NUMBER		
JOB NUMBER		
REVISION	DATE	
DATE	JANUARY 18, 2019	
SCALE	AS NOTED	
DRAWN BY		
DESCRIPTION	ALTERNATE RAMP LOCATIONS	
TITLE	313 COLUMBUS AVENUE NEW YORK, NEW YORK	
SEAL	DRAWING L-006.00	

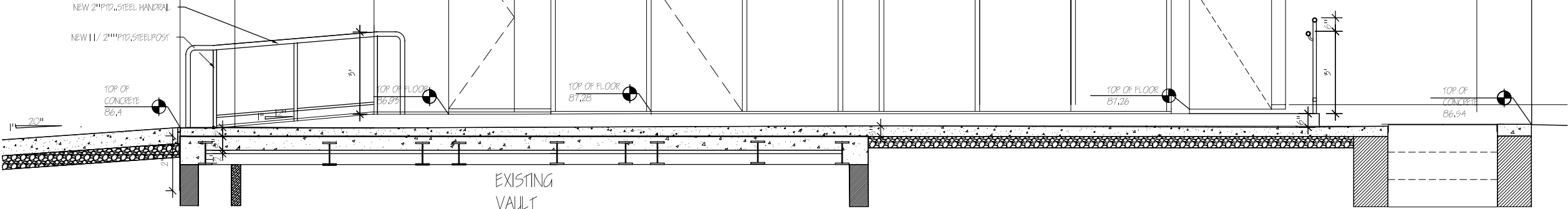


**Monty Mitchell AIA /
George R. Mitchell P.C.**
21 - 27 45 th Avenue
Long Island City, N.Y. 11101
Phone: 718 786 5165
Fax: 718 786 6215

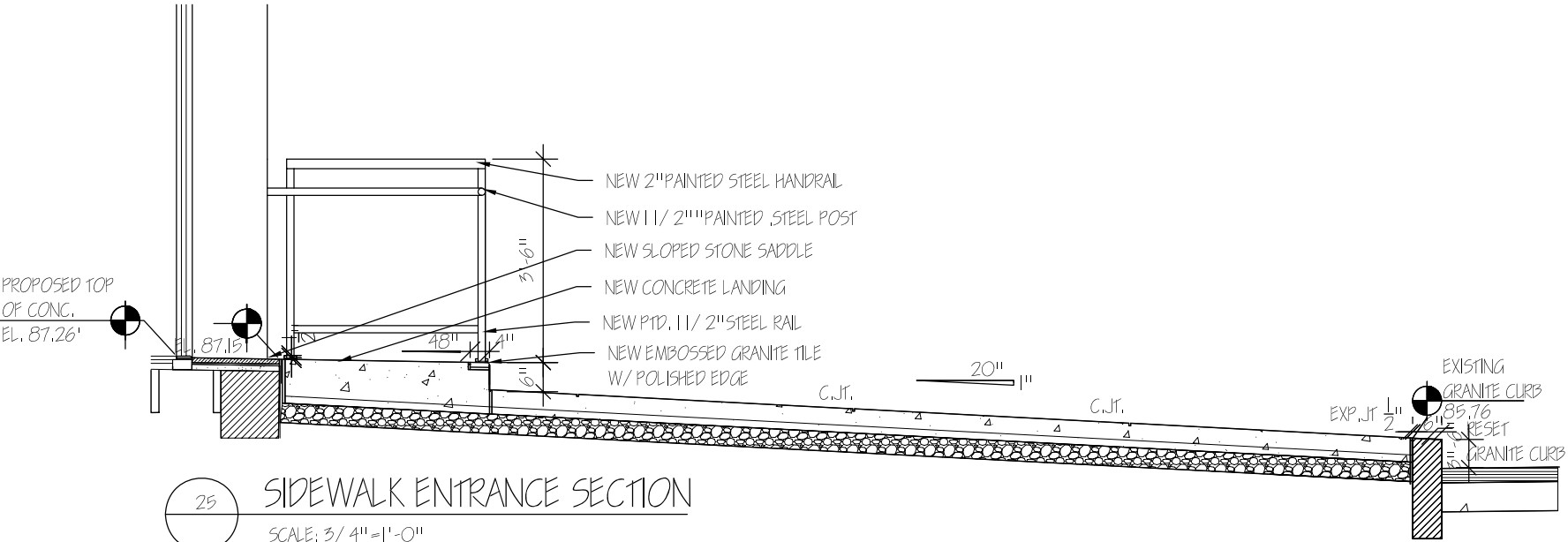
A-001.00

THE SHADE STORE

CORKS



10 SIDEWALK ELEVATION
SCALE: 1/2"=1'-0"



25 SIDEWALK ENTRANCE SECTION
SCALE: 3/4"=1'-0"

Monty Mitchell AIA /
George R. Mitchell P.C.
21 - 27 45th Avenue
Long Island City, N.Y. 11101
Phone: 718 786 5165
Fax: 718 786 6215

SCAN NUMBER		
JOB NUMBER		
REVISION	DATE	
	3/1/19	
DATE	JANUARY 18, 2019	
SCALE	AS NOTED	
DRAWN BY		
DESCRIPTION	SIDEWALK ELEVATION	
TITLE	313 COLUMBUS AVENUE NEW YORK, NEW YORK	
SEAL	DRAWING	A-004.00