

333 Central Park West

Block 1207, Lot 29

Located in the Central Park West Historic District

Application for double louvers in the window of the building courtyard on 93rd street, top floor, facing East.

THE TURIN

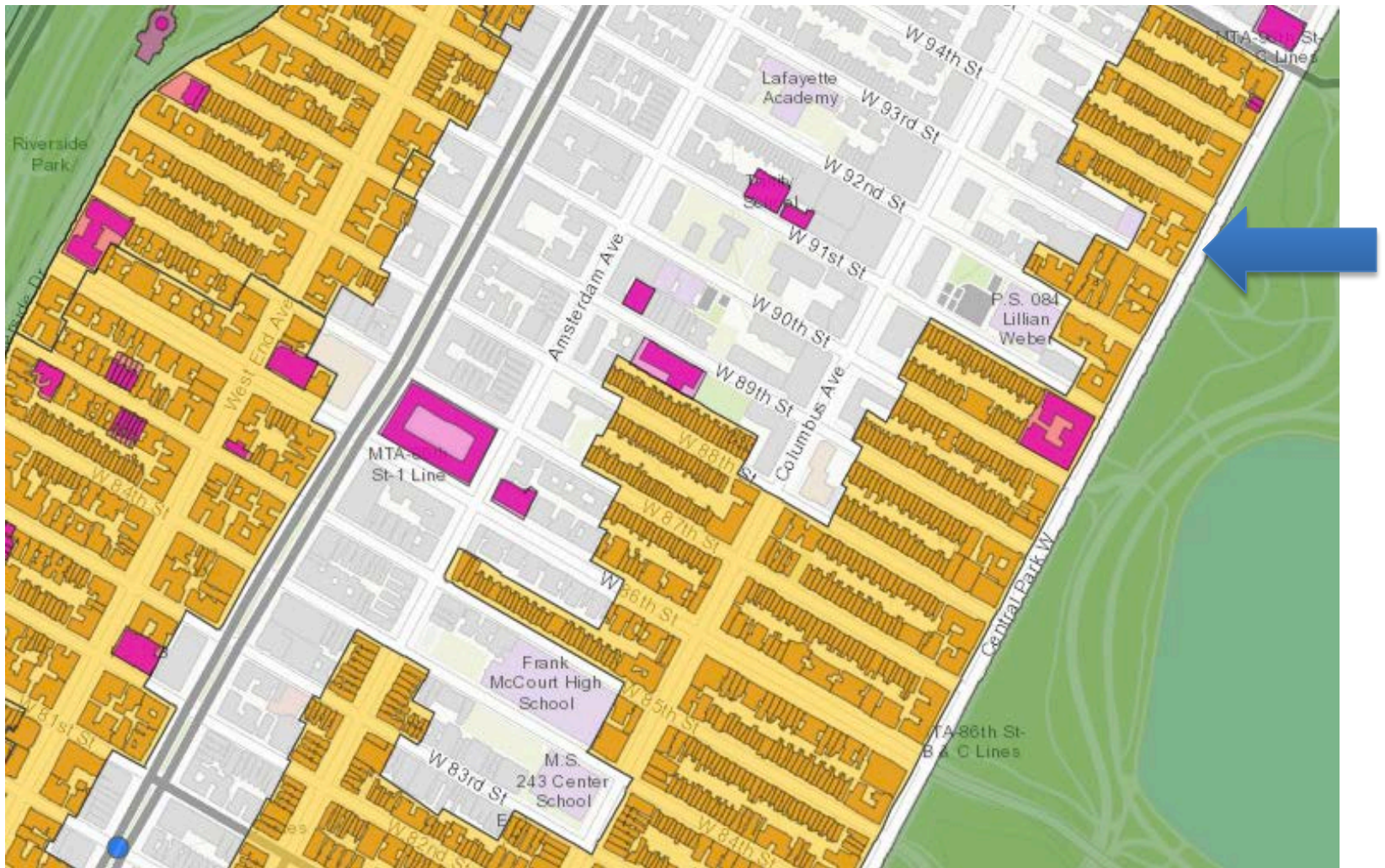
Construction Date: 1909-1910

Architect/Builder: Albert Joseph Bodker

Owner/Developer: Sturtyvant Realty

Style: Neo-Renaissance, 12 Stories

Material: Brick, Limestone, Ironwork



333 CENTRAL PARK WEST AT 93RD STREET



VIEW OF ENTIRE BUILDING

The proposed window is on the top floor of the building and is approximately 15 feet in from the side of the building/street.



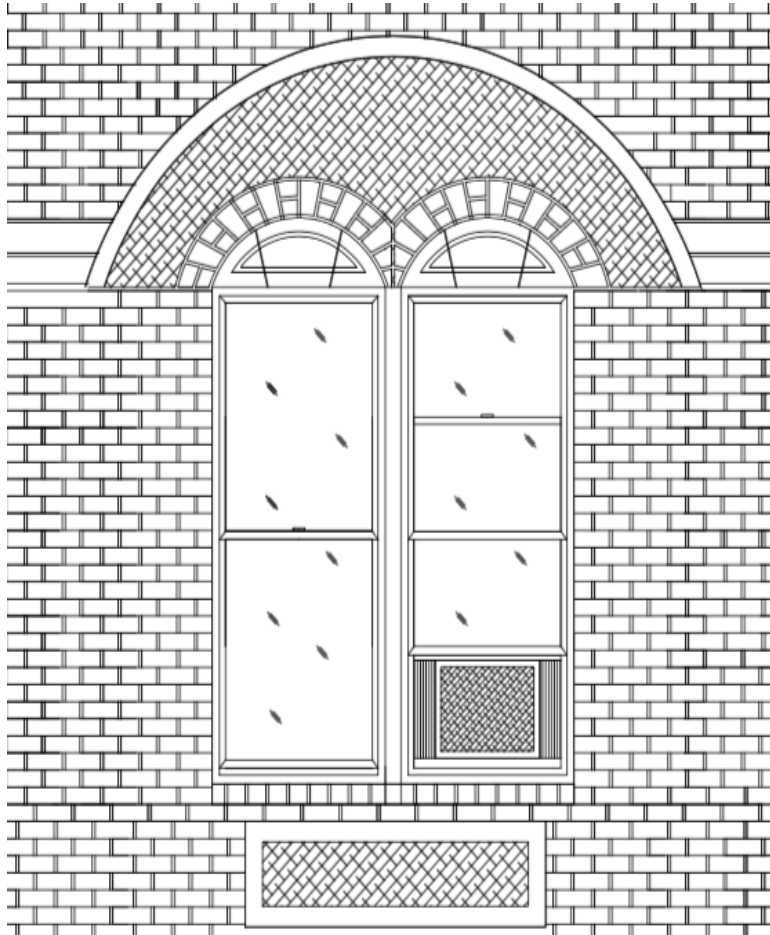
CLOSE UP OF WINDOW FROM TOP FLOOR OF BUILDING ACROSS 93RD STREET.



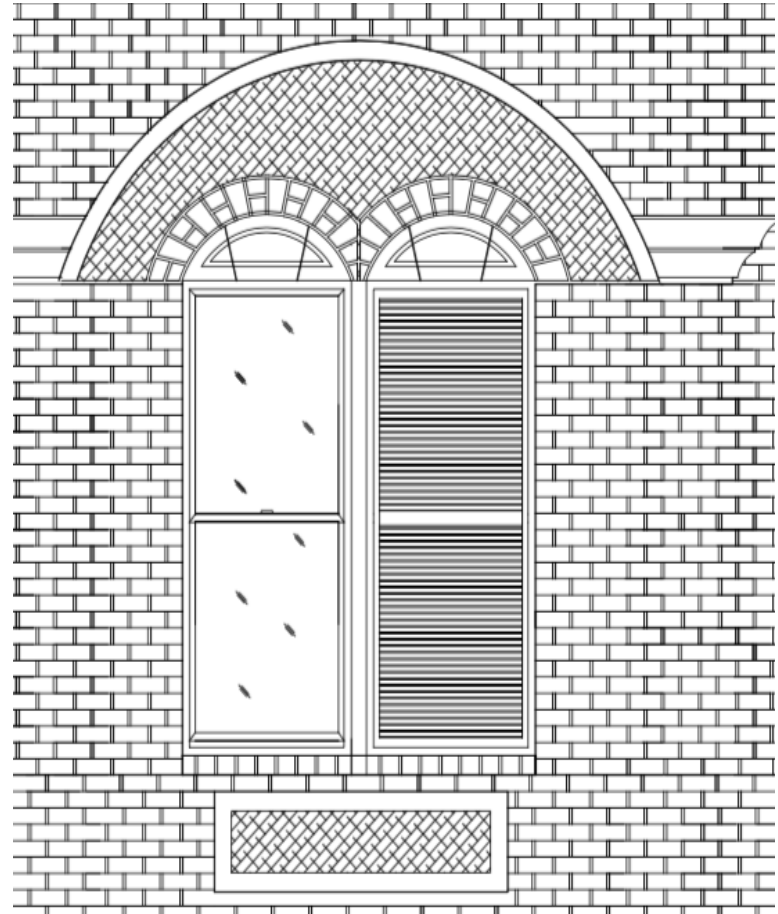
INTERIOR VIEW OF THE WINDOW



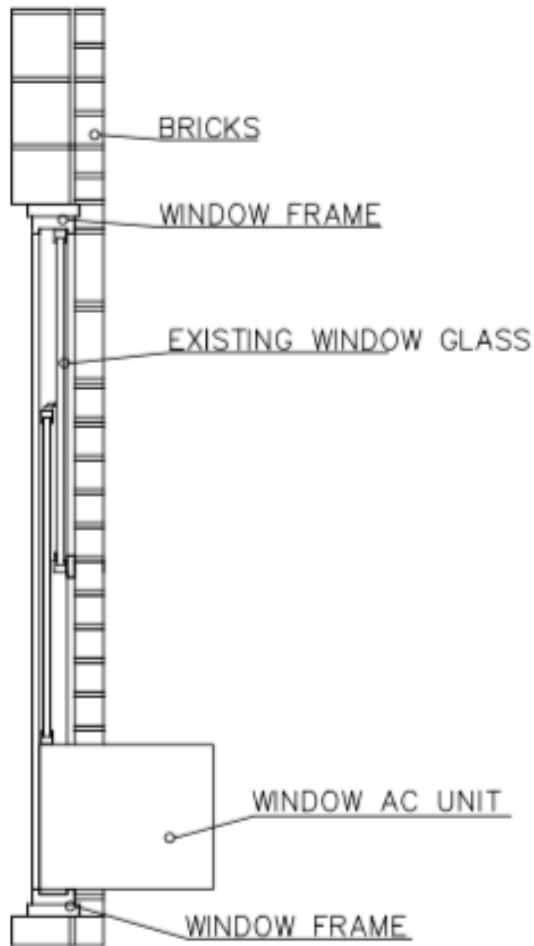
INTERIOR VIEW OF THE WINDOW



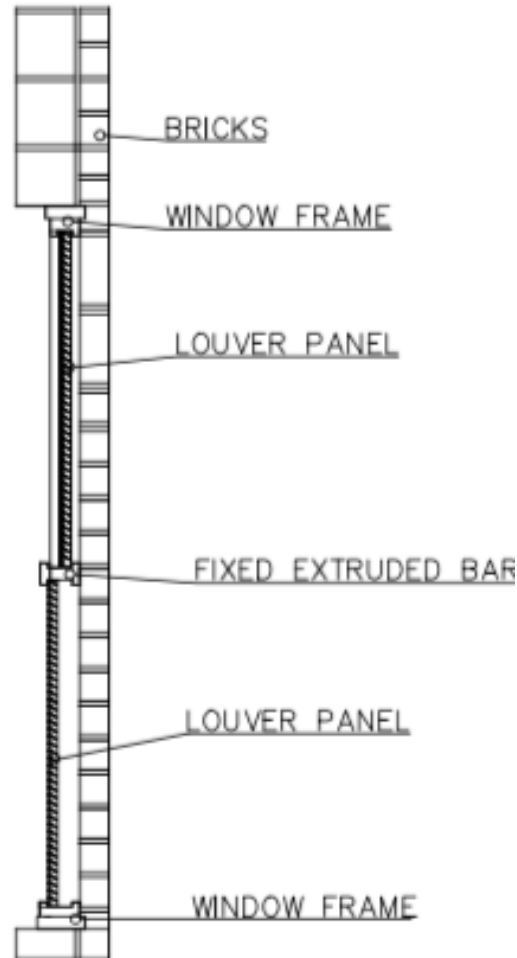
EXISTING WINDOW



PROPOSED WINDOW



EXISTING WINDOW, POSITION OF GLASS



LOUVERS WILL BE INSTALLED BEHIND THE EXISTING BRICKMOLD AND WILL APPROXIMATE THE DEPTH OF THE WINDOW



LOUVE COLOR, DARK BRONZE

VISIBILITY



VIEW FROM 93RD STREET & CPW, SE CORNER

Window is out-of-site from sidewalk view



**SIDEWALK VIEW OF WINDOW - LOOKING UP
FROM 93rd STREET & CPW, SW CORNER**

Window is out-of-site from the sidewalk view



**SIDEWALK VIEW OF WINDOW - LOOKING UP
FROM 93rd STREET (ZOOMED)**

Window is out-of-site from the sidewalk view



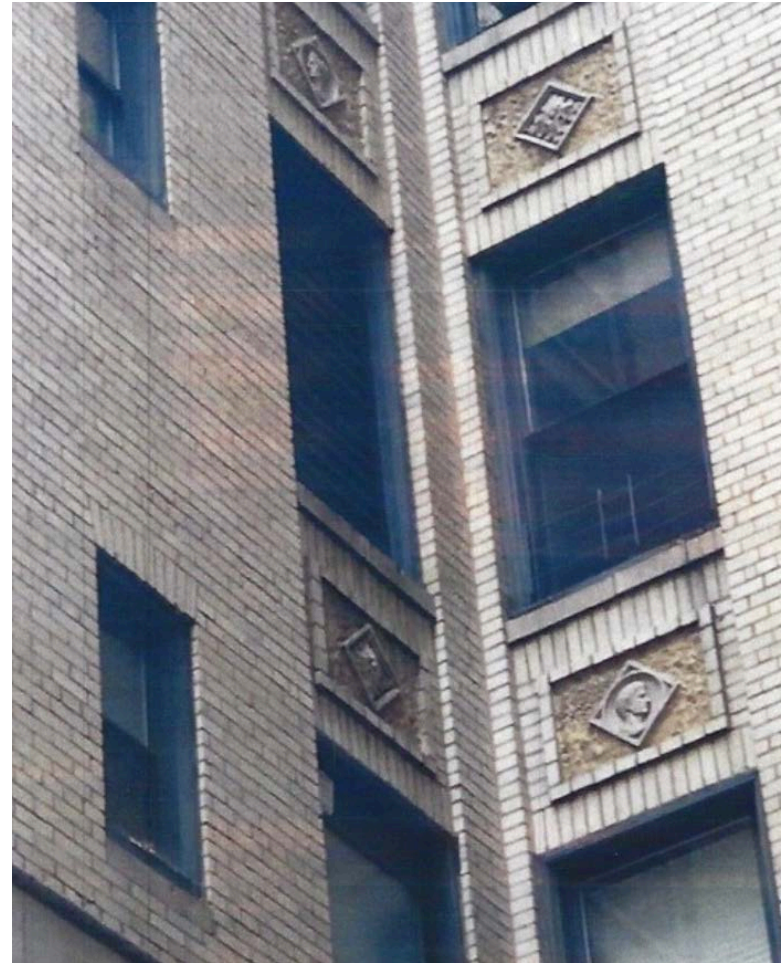
SIDEWALK VIEW OF WINDOW LOOKING UP – ZOOMED

The proposed window is obscured by the West facing wall of the courtyard.

EXAMPLES OF FULL-WINDOW LOUVERS FOUND AT THE BUILDING



**SOUTH FACING WALL WHICH
CAN BE VIEWED FROM THE STREET**



COURTYARD OF 333 CPW