

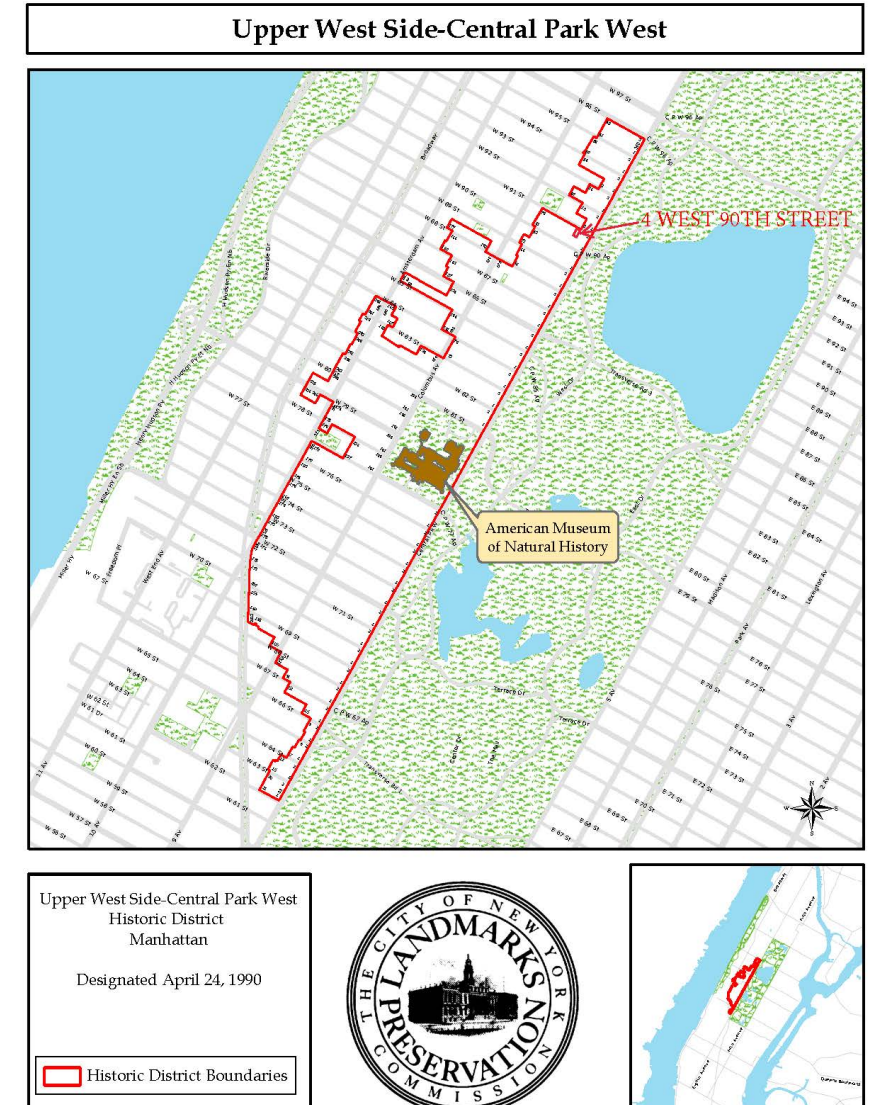
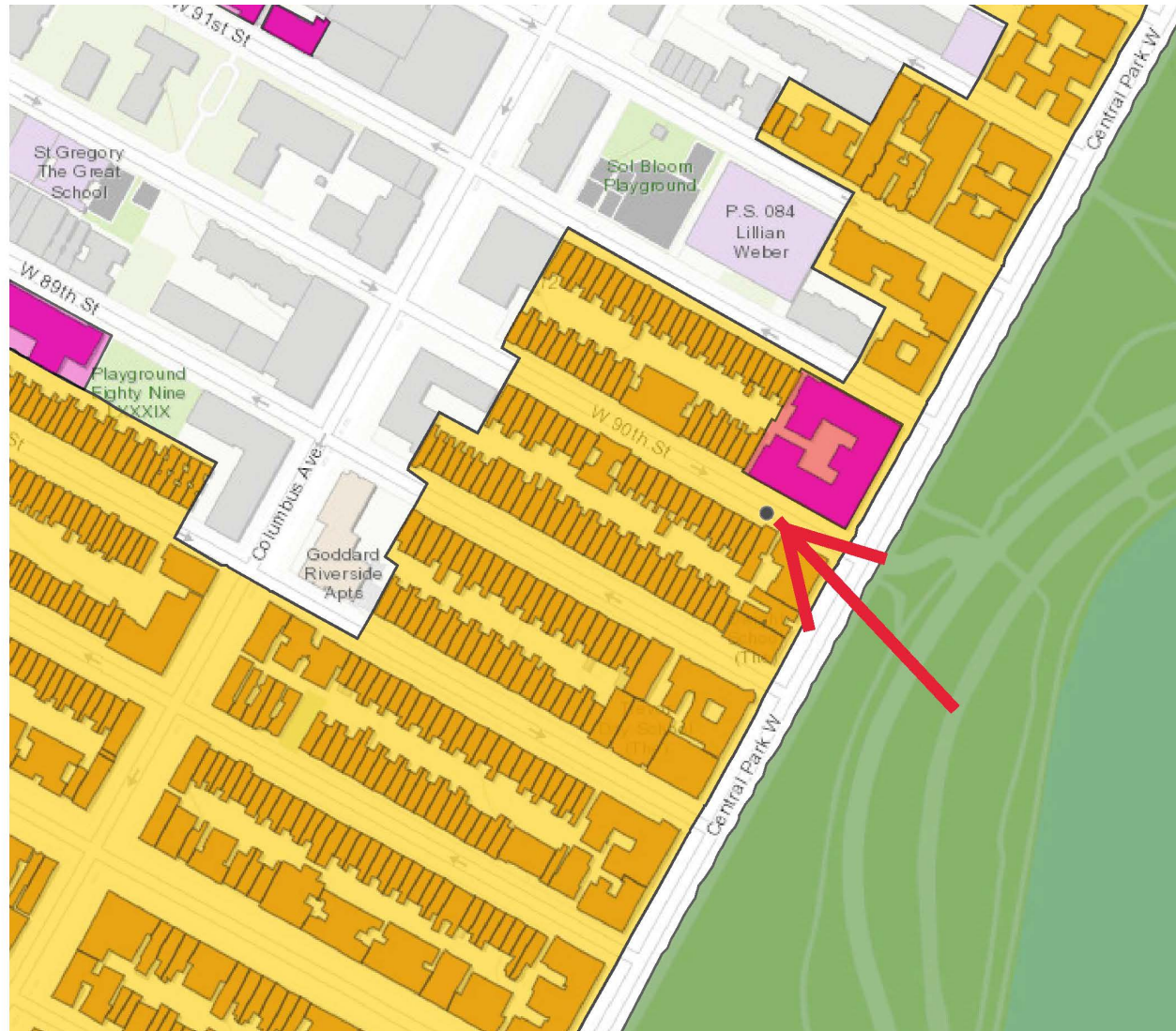


Current conditions

4 West 90th Street, Manhattan

Upper West Side/
Central Park West Historic District

Legalize current condition of an entrance door on 1st floor,
windows on 3rd floor, and
painting façade without LPC permit(s)



The property is located in the Upper West Side/Central Park West Historic District



1940s Tax Photo



1980s Tax Photo



Historic District Designation Photo, 1990



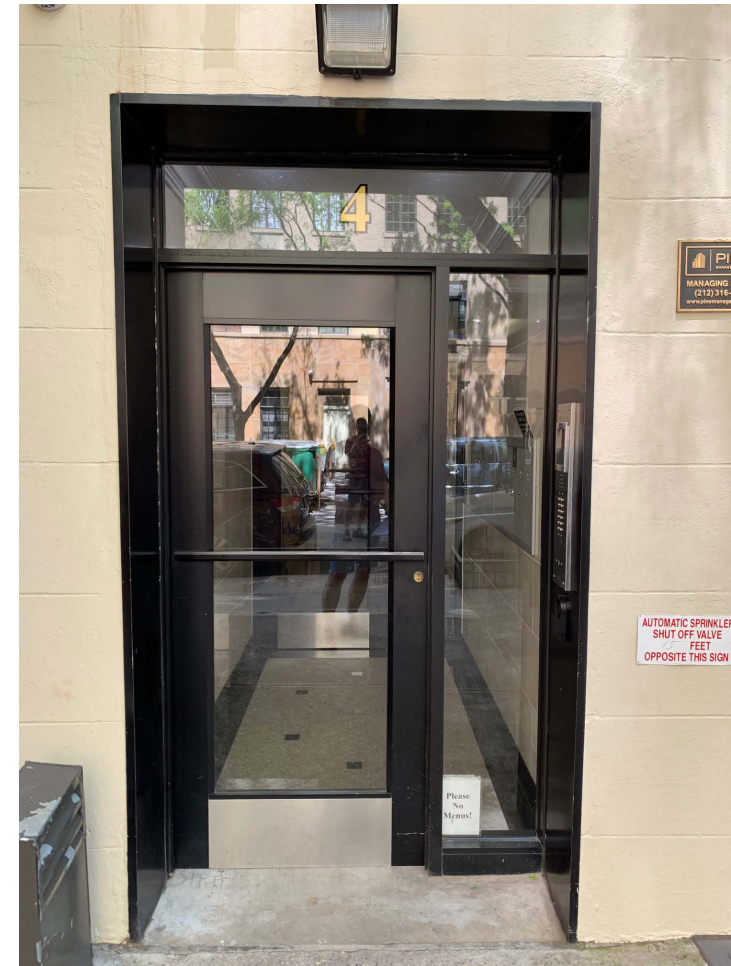
Current

Work Completed (Entrance door on 1st floor)

Slide 4



Google photo, April 2009



Entrance door on 1st floor replaced without LPC permit

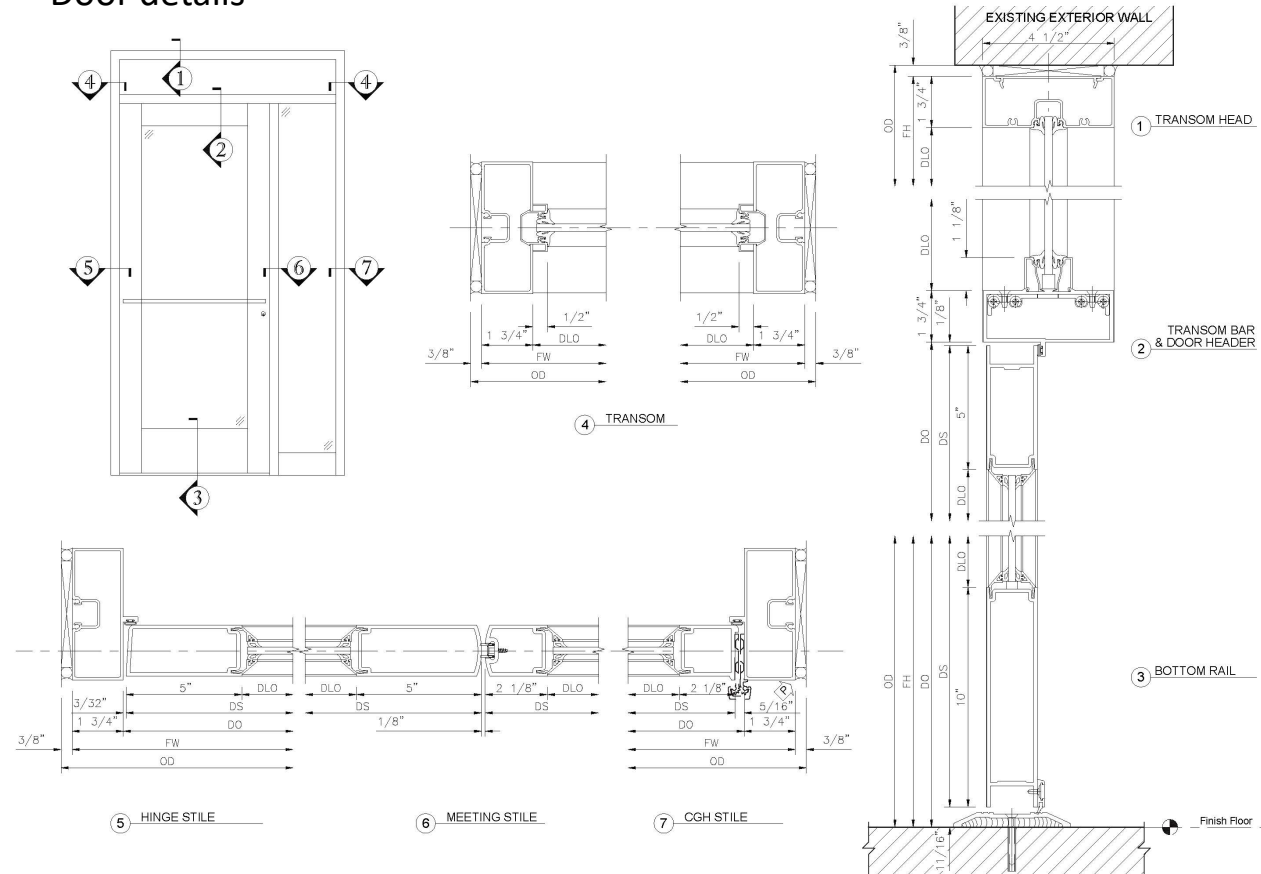
Work Completed (Entrance door on 1st floor)

Slide 5



Entrance door on 1st floor

Door details



- Manufacturer: Crystal
- Type: Custom Aluminum Door
- Black exterior Thermally Broken Aluminum door with insulated and glazed



Previous Condition on Designation Report, 1990



Window on 3rd Floor replaced without LPC permit

Work Completed (Window on 3rd Floor)

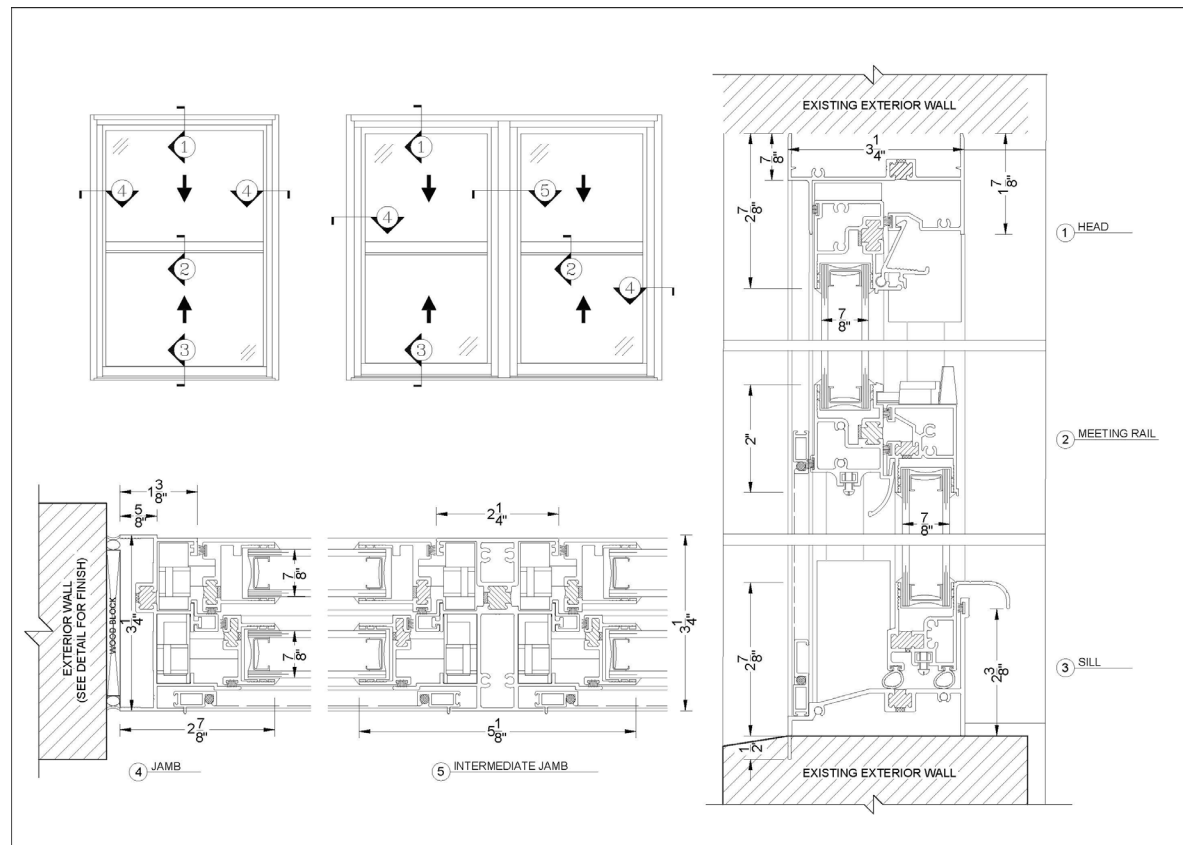
Slide 7



Window on 3rd floor

- Manufacturer: Crystal
- Type: Double-hung Tilt Window
- Model: series 2000A CW-PG50-H
- - Black exterior Thermally Broken Aluminum Double Hung Windows with Low E coating & Argon filled IGU with double pane insulated glass

Window details



Work Completed(Painting façade)

Slide 8



Tax photo, 1980s



Current façade painting without LPC permit





Photo in the row on Designation Report, 1990



Current photo in the row



6 W 90th Street



8 W 90th Street



10 W 90th Street

4, 6, 8, 10 West 90th Street
Tax Map Block/Lots: 1203/38, 138, 39, 40

ORIGINAL ROW DATA

DATE: 1888-89 [NB 645-1888]

TYPE: Rowhouses (4 of 4)

ARCHITECT: Gilbert A. Schellenger

OWNER/DEVELOPER: William E. Diller

STYLE/ORNAMENT: Queen Anne/Romanesque Revival

ROW CONFIGURATION: Individualized

Facade(s): Brownstone and ironwork

Number of Stories: 4 with basement

Window Type/Material: One-over-one double-hung/Wood

One-over-one double-hung with transom/Wood

Basement Type: Raised

Stoop Type: Box

Method of Construction: Masonry bearing walls

WEST 90TH STREET

Between Central Park West and Columbus Avenue [South Side]

4, 6, 8, 10 West 90th Street
Tax Map Block/Lots: 1203/38, 138, 39, 40

ALTERATION(s)

No. 4 West 90th Street

Height altered to eighty feet, penthouse studio apartment, stoop removed, and facade refaced.

1926: Alt 1356-1926 [Source: Alteration Docket]

Architect -- Ralph M. Karger Owner -- Mary A. Wenman