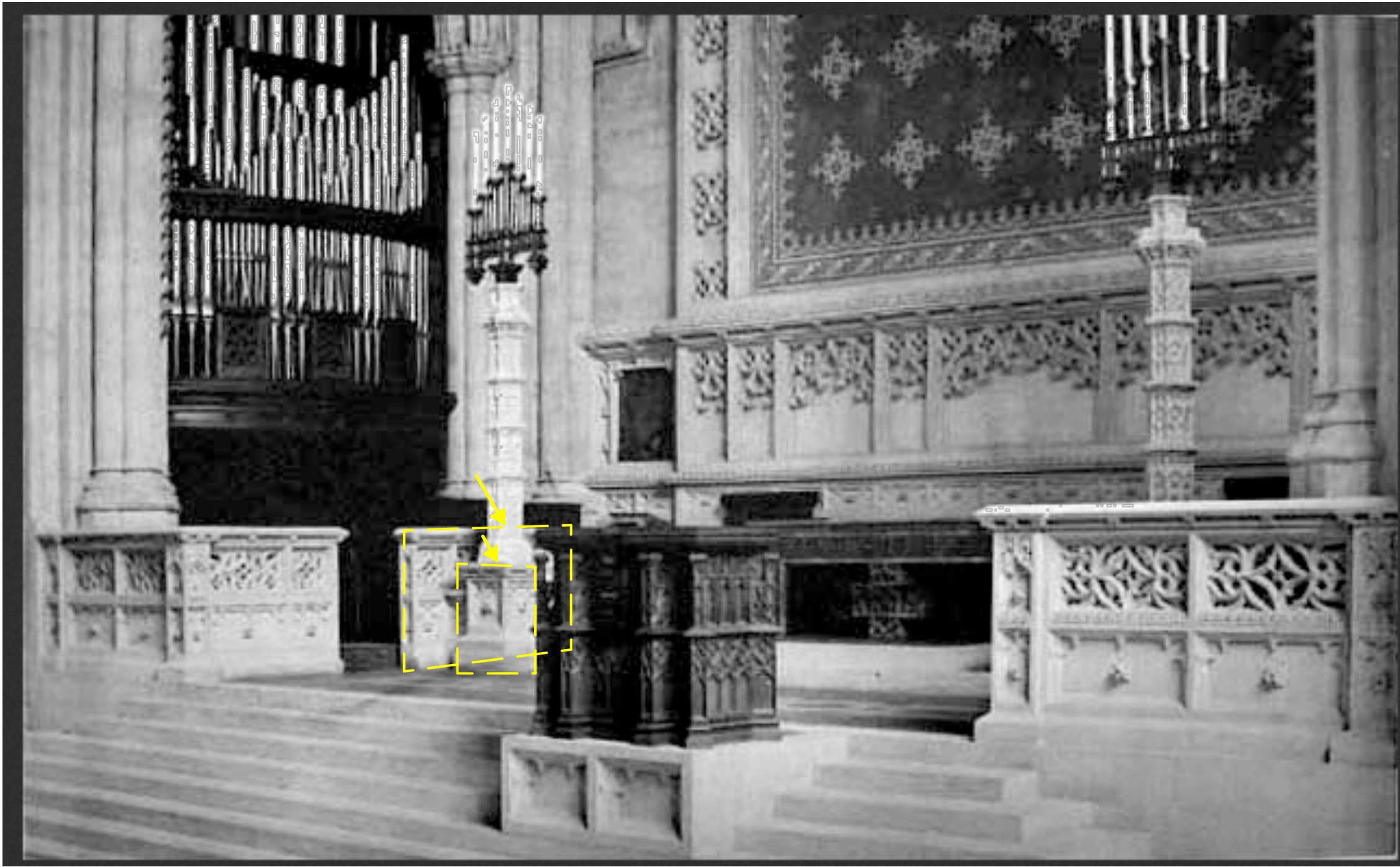


1 HISTORIC PHOTOGRAPH - CIRCA 1899
CENTRAL PARK WEST FACADE LOOKING SOUTH



2 HISTORIC (TAX) PHOTOGRAPH - CIRCA 1940
CENTRAL PARK WEST FACADE LOOKING NORTH



3 HISTORIC PHOTOGRAPH - CIRCA 1899
INTERIOR - SHOWING SALVAGED STONE UNITS



4 EXISTING STREET VIEW - CENTRAL PARK WEST



5 FOOTPRINT OF PROPOSED RAMP & STAIR
CENTRAL PARK WEST FACADE



6 FOOTPRINT OF PROPOSED RAMP & STAIR
CENTRAL PARK WEST FACADE



7 EXISTING VIEW - SIDE GARDEN
INTERIOR



8 EXISTING VIEW - SIDE GARDEN
LOOKING EAST ALONG WEST 76th STREET



9 COMPONENTS OF FORMER STONE GUARDRAIL AT INTERIOR
HISTORIC FABRIC



10 COMPONENTS OF FORMER STONE GUARDRAIL AT INTERIOR
HISTORIC FABRIC



11 COMPONENTS OF FORMER STONE GUARDRAIL AT INTERIOR
HISTORIC FABRIC



12 SALVAGE STONE GUARDRAIL (Two Units) FOR REUSE
INTERIOR



13 EXISTING MECHANICAL VAULT IN POOR CONDITION
SOUTH SIDE OF CENTRAL PARK WEST



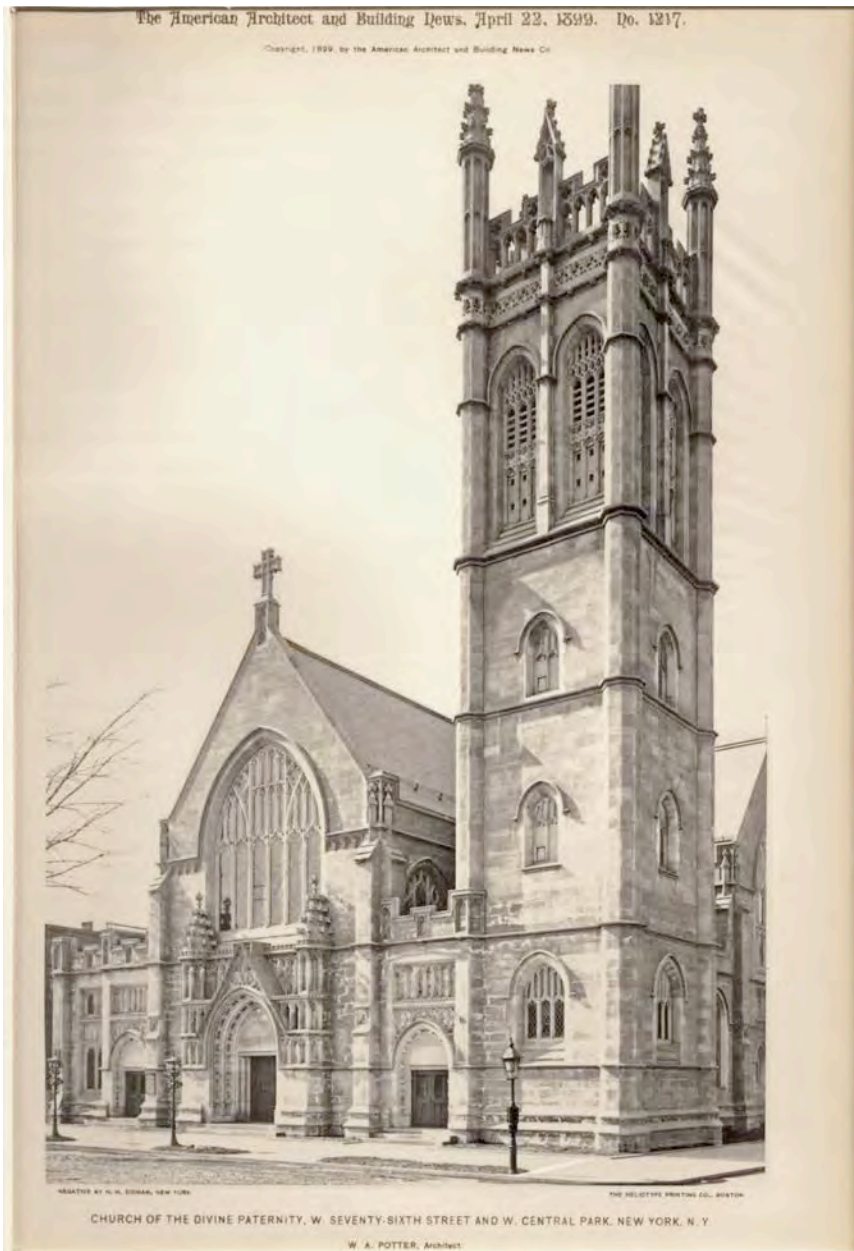
14 EXISTING VIEW AT ENTRY DOOR
CENTRAL PARK WEST



15 DETAIL VIEW OF VAULT DECKING IN POOR CONDITION



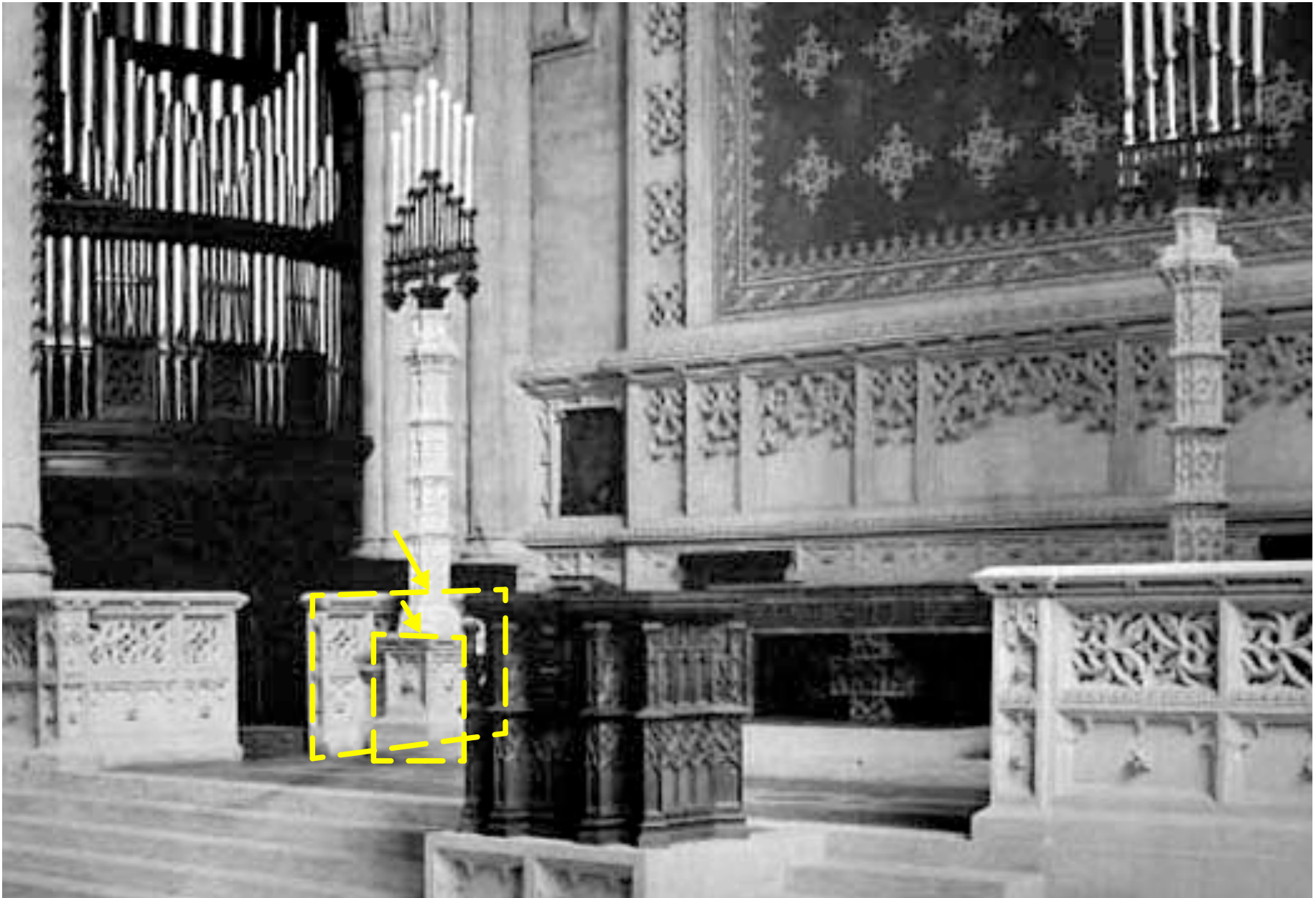
16 DETAIL VIEW OF VAULT DECKING IN POOR CONDITION



1 **HISTORIC PHOTOGRAPH - CIRCA 1899**
CENTRAL PARK WEST FACADE LOOKING WEST



2 **HISTORIC (TAX) PHOTOGRAPH - CIRCA 1940**
CENTRAL PARK WEST FACADE LOOKING NORTH



3 HISTORIC (TAX) PHOTOGRAPH - CIRCA 1899
INTERIOR - SHOWING SALVAGED STONE UNITS



4 **EXISTING STREET VIEW**
CENTRAL PARK WEST FACADE



5

FOOTPRINT OF PROPOSED RAMP & STAIR
CENTRAL PARK WEST FACADE



6

FOOTPRINT OF PROPOSED RAMP & STAIR
CENTRAL PARK WEST FACADE



7

EXISTING VIEW - APPROACH TO MAIN ENTRANCE
CENTRAL PARK WEST FACADE LOOKING SOUTH



8

EXISTING VIEW - SIDE GARDEN
WEST 76th STREET FACADE LOOKING EAST



9 **COMPONENTS OF FORMER STONE GUARDRAIL at INTERIOR**
HISTORIC FABRIC



10 **COMPONENTS OF FORMER STONE GUARDRAIL at INTERIOR**
HISTORIC FABRIC



11 **COMPONENTS OF FORMER STONE GUARDRAIL at INTERIOR**
HISTORIC FABRIC



12 **SALVAGE STONE GUARDRAIL (Two Units) FOR REUSE**
INTERIOR



13 **EXISTING MECHANICAL VAULT IN POOR CONDITION**
CENTRAL PARK WEST FACADE LOOKING SOUTH



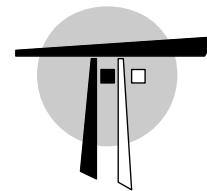
14 **EXISTING VIEW at ENTRY DOOR**
CENTRAL PARK WEST FACADE LOOKING NORTH



15 **DETAIL VIEW OF VAULT DECKING IN POOR CONDITION**
CENTRAL PARK WEST FACADE



16 **DETAIL VIEW OF VAULT DECKING IN POOR CONDITION**
CENTRAL PARK WEST FACADE



THOMAS A. FENNIMAN
ARCHITECT
ONE UNION SQUARE WEST
NEW YORK, NY 10003
TEL: 212.414.0250

SEAL:

REVISION:

- △ LPC ISSUE: 2/4/20.
- △
- △
- △
- △
- △
- △
- △
- △
- △

PROJECT: **FOURTH UNIVERSALIST SOCIETY**
160 Central Park West, New York, NY 10023
ACCESSIBLE RAMP
D.C.B. NUMBER:

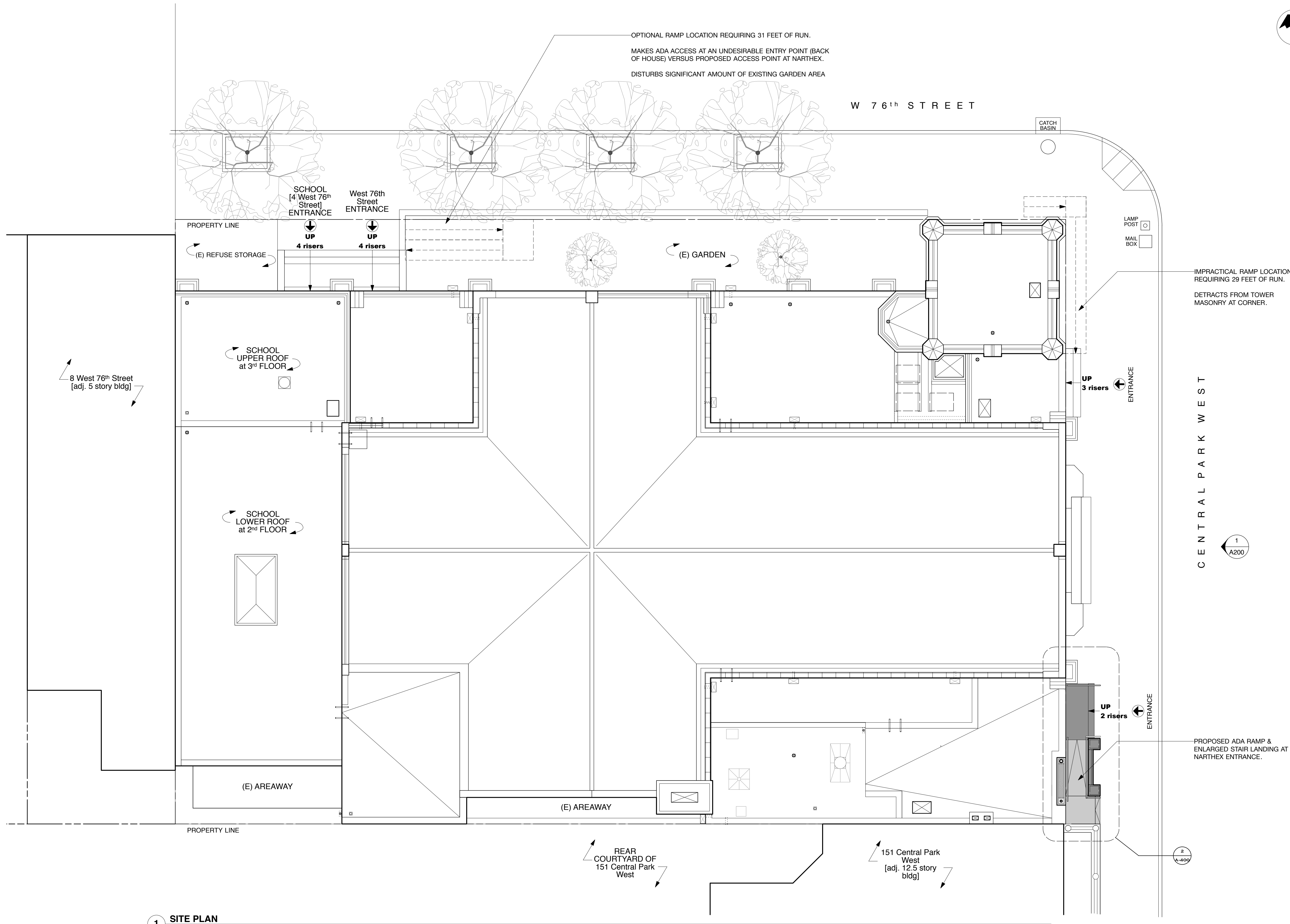
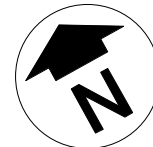
TITLE: **COVER SHEET & ROOF PLAN**

DATE: 01/20/20 PROJECT #: 47105

SCALE: AS NOTED DRAWN BY: SLH

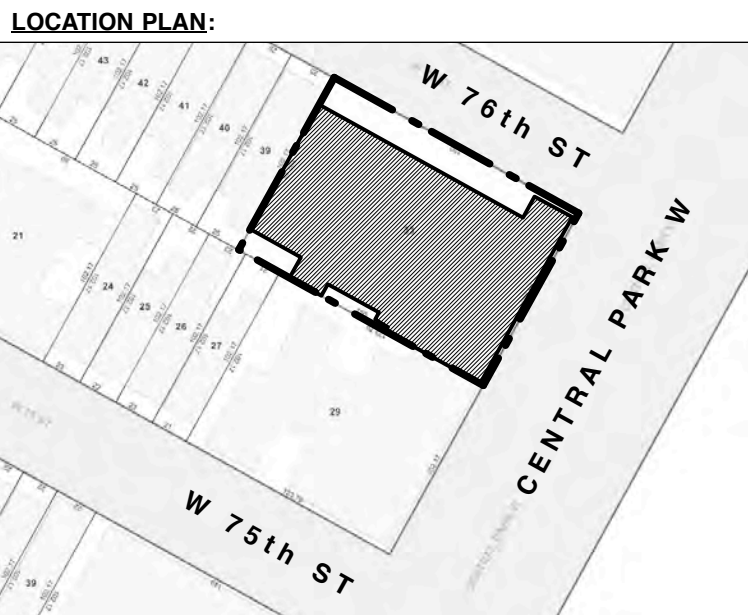
SHEET NUMBER: **A-100.00**

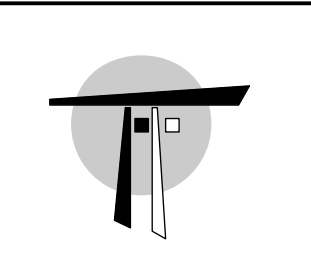
PAGE NUMBER: 1 OF 4
NYC DOB NUMBER:



1 SITE PLAN
Scale: 1/8" = 1'-0"

BUILDING DATA:
BIN#: 1078199 LANDMARK DISTRICT: CENTRAL PARK WEST
HISTORIC DISTRICT: CENTRAL PARK WEST
NR # 90NR00905
BLOCK: 1128 ZONING: R10A, R8B
LOT: 33 MAP: 8C





THOMAS A. FENNIMAN
ARCHITECT
ONE UNION SQUARE WEST
NEW YORK, NY 10003
TEL: 212.414.0250

SEAL:

REVISION:

| | |
|---|--------------------|
| △ | LPC ISSUE: 2/4/20. |
| △ | |
| △ | |
| △ | |
| △ | |
| △ | |
| △ | |
| △ | |
| △ | |

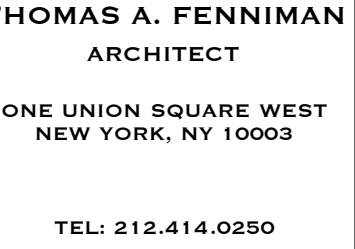
PROJECT:
FOURTH UNIVERSALIST SOCIETY
160 Central Park West, New York, NY 10023
ACCESSIBLE RAMP
D.C.B. NUMBER:

TITLE:
**EXISTING
CPW FACADE**

| | |
|--------------------|---------------------|
| DATE: 03/25/15 | PROJECT #: 47105 |
| SCALE: AS NOTED | DRAWN BY: SLH |

SHEET NUMBER:
A-200.00
PAGE NUMBER: 2 OF 4
NYC DOB NUMBER:

1 CENTRAL PARK WEST FACADE - EAST ELEVATION - EXISTING
Scale: 1/8" = 1'-0"



REAL:

REVISION:

LPC ISSUE: 2/4/20.

△ —

△ _

△ _

\triangle —

△ —



△ —

FOURTH UNIVERSALIST SOCIETY
160 Central Park West, New York, NY 10023

FOURTH UNIVERSALIST
160 Central Park West, New York, NY 10023
ACCESSIBLE DAMD

FOL
160 Cel
ACCE
D.O.B. NUMBER:

**PROPOSED
CPW FACADE**

| | |
|----------|------------|
| DATE: | PROJECT #: |
| 03/25/15 | 47105 |

| | |
|--------------------|------------------|
| SCALE: AS NOTED | DRAWN BY: SLH |
|--------------------|------------------|

SHEET NUMBER:

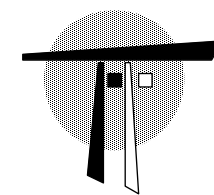
A-201.00

PAGE NUMBER: 3 OF 4

.....



1 CENTRAL PARK WEST FACADE - EAST ELEVATION - PROPOSED
Scale: 1/8" = 1'-0"



THOMAS A. FENNIMAN
ARCHITECT
ONE UNION SQUARE WEST
NEW YORK, NY 10003
TEL: 212.414.0250

SEAL:

REVISION:

△ LPC ISSUE: 2/4/20.

△
△
△
△
△
△
△
△

PROJECT:
FOURTH UNIVERSALIST SOCIETY
160 Central Park West, New York, NY 10023
BARRIER-FREE ACCESS
D.C.B. NUMBER:

TITLE:
DETAIL PLANS & ELEVATIONS

DATE: 01/20/20 PROJECT #: 47100

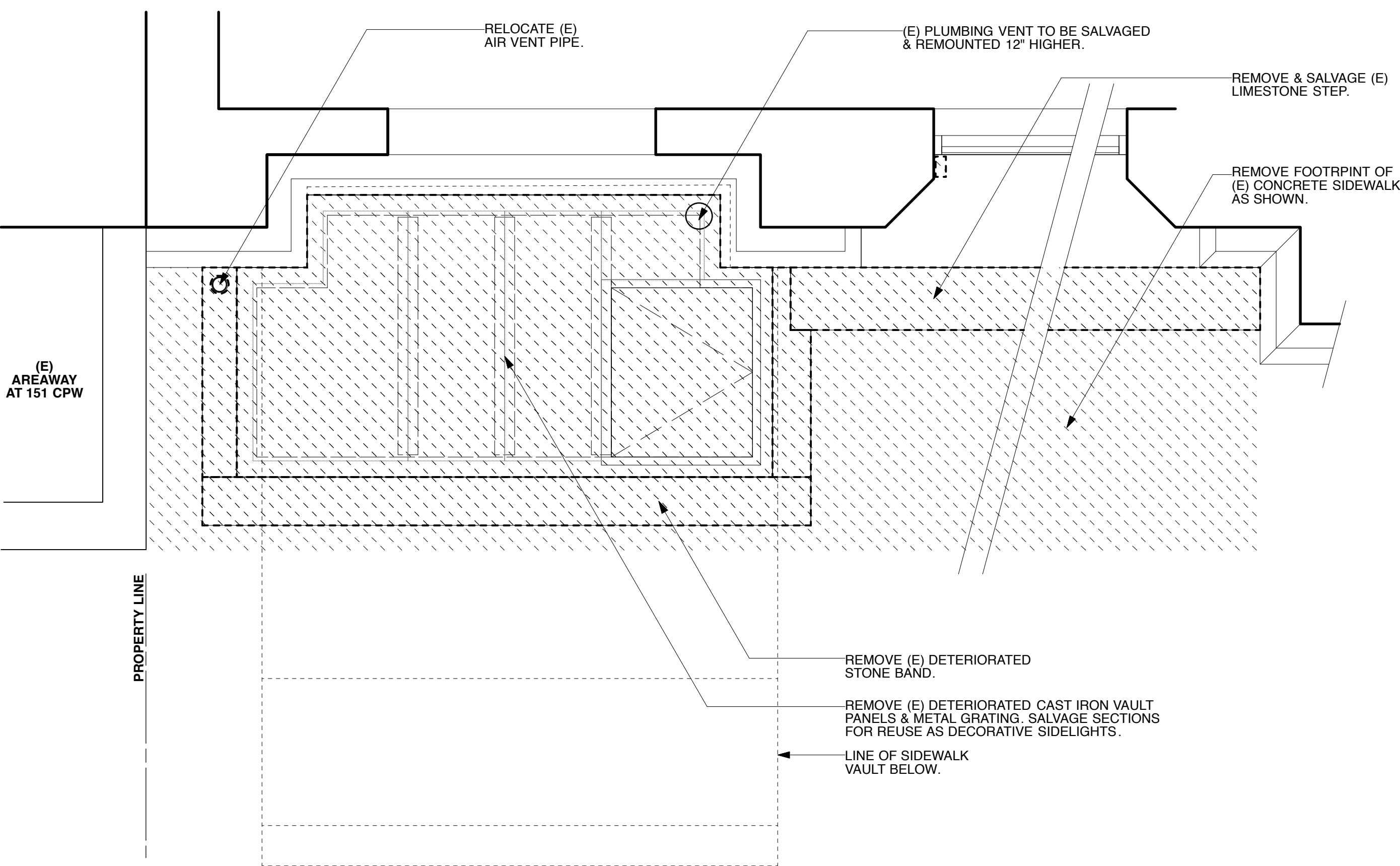
SCALE: AS NOTED DRAWN BY: SLH

SHEET NUMBER:

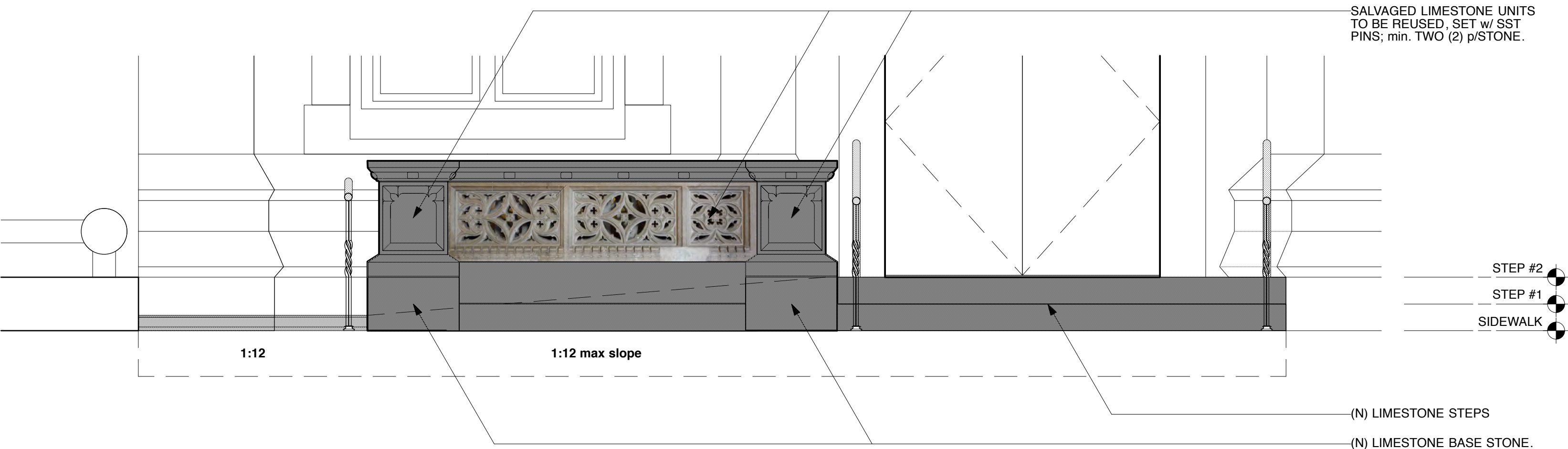
A-400.00

PAGE NUMBER: 4 OF 4

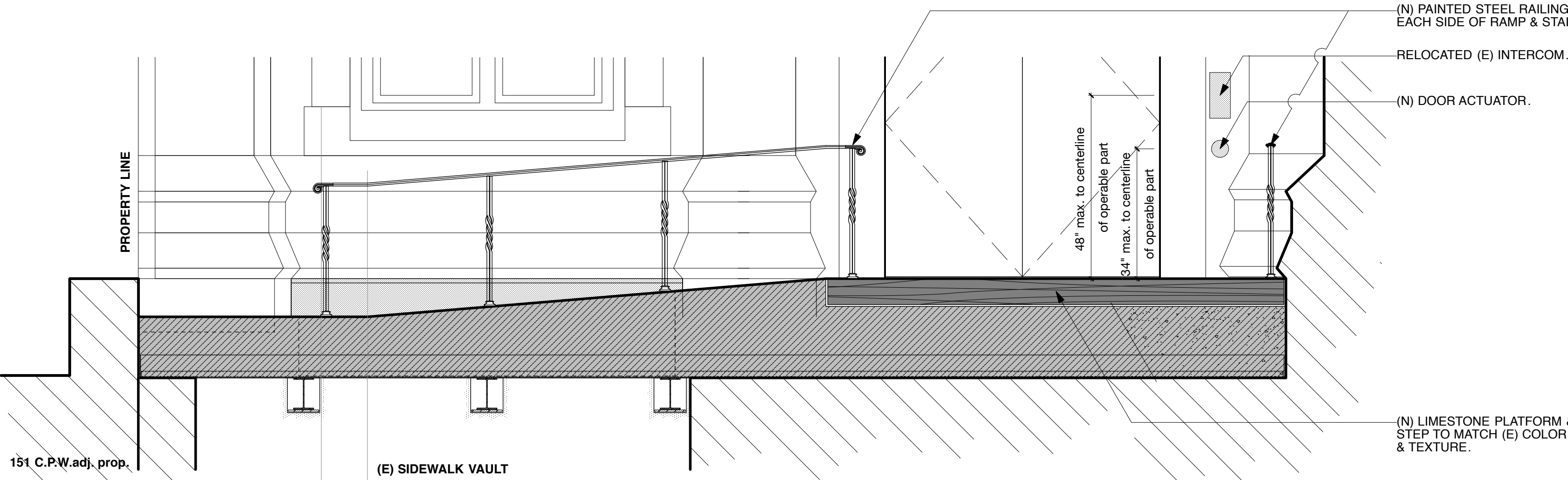
NVC DOB NUMBER:



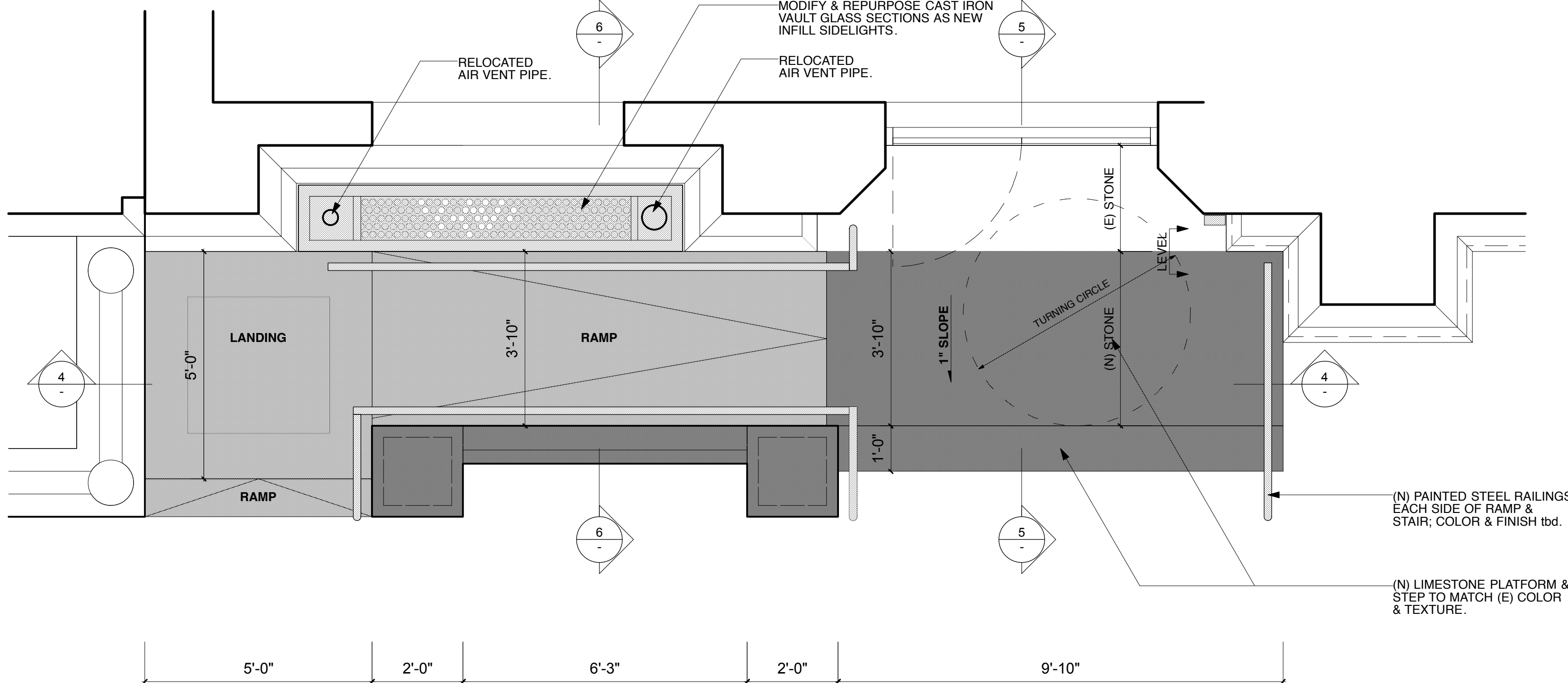
1 DEMOLITION AS PROPOSED
Scale: 1/2" = 1'-0"



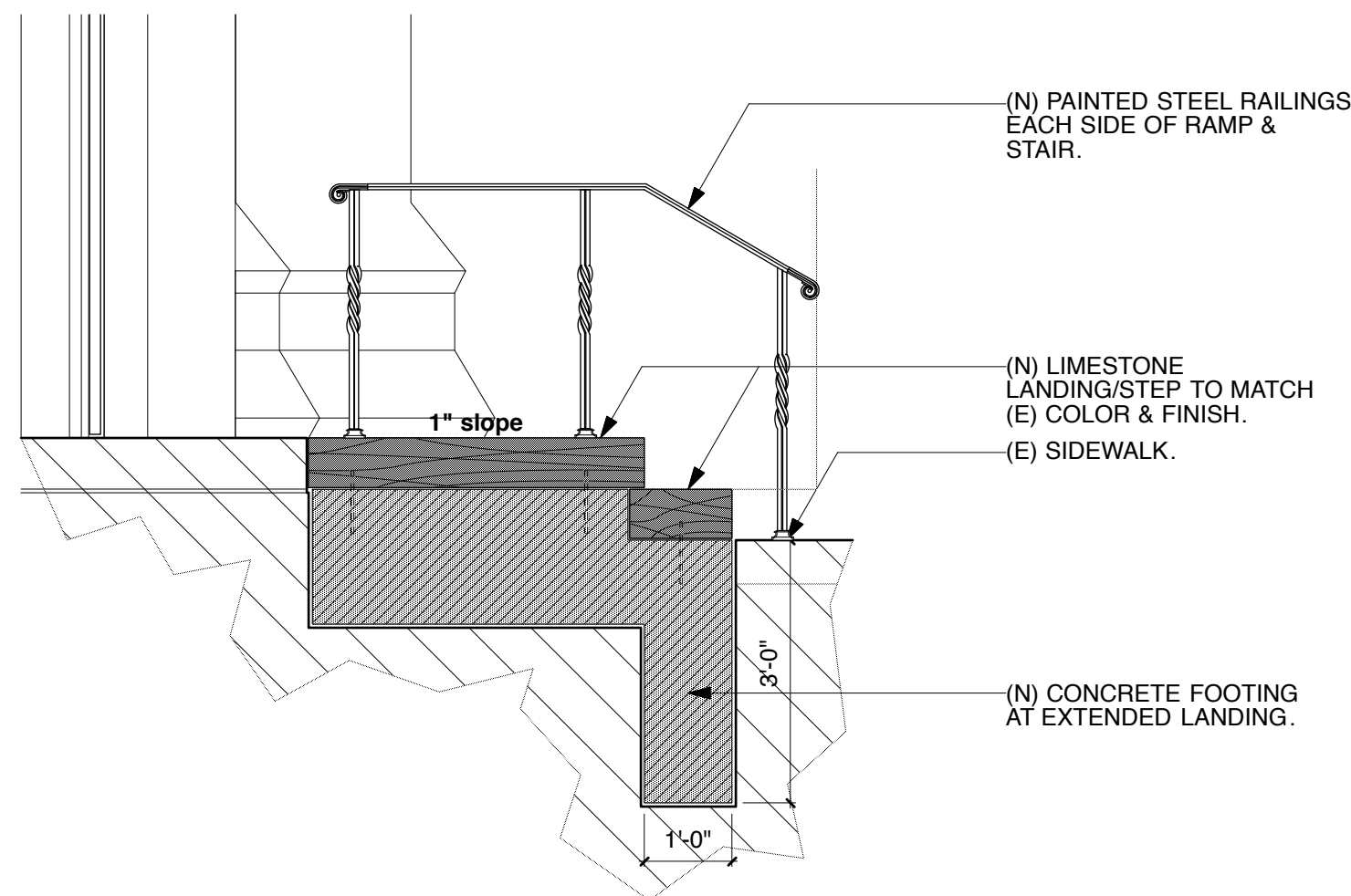
3 CENTRAL PARK WEST ELEVATION AS PROPOSED
Scale: 1/2" = 1'-0"



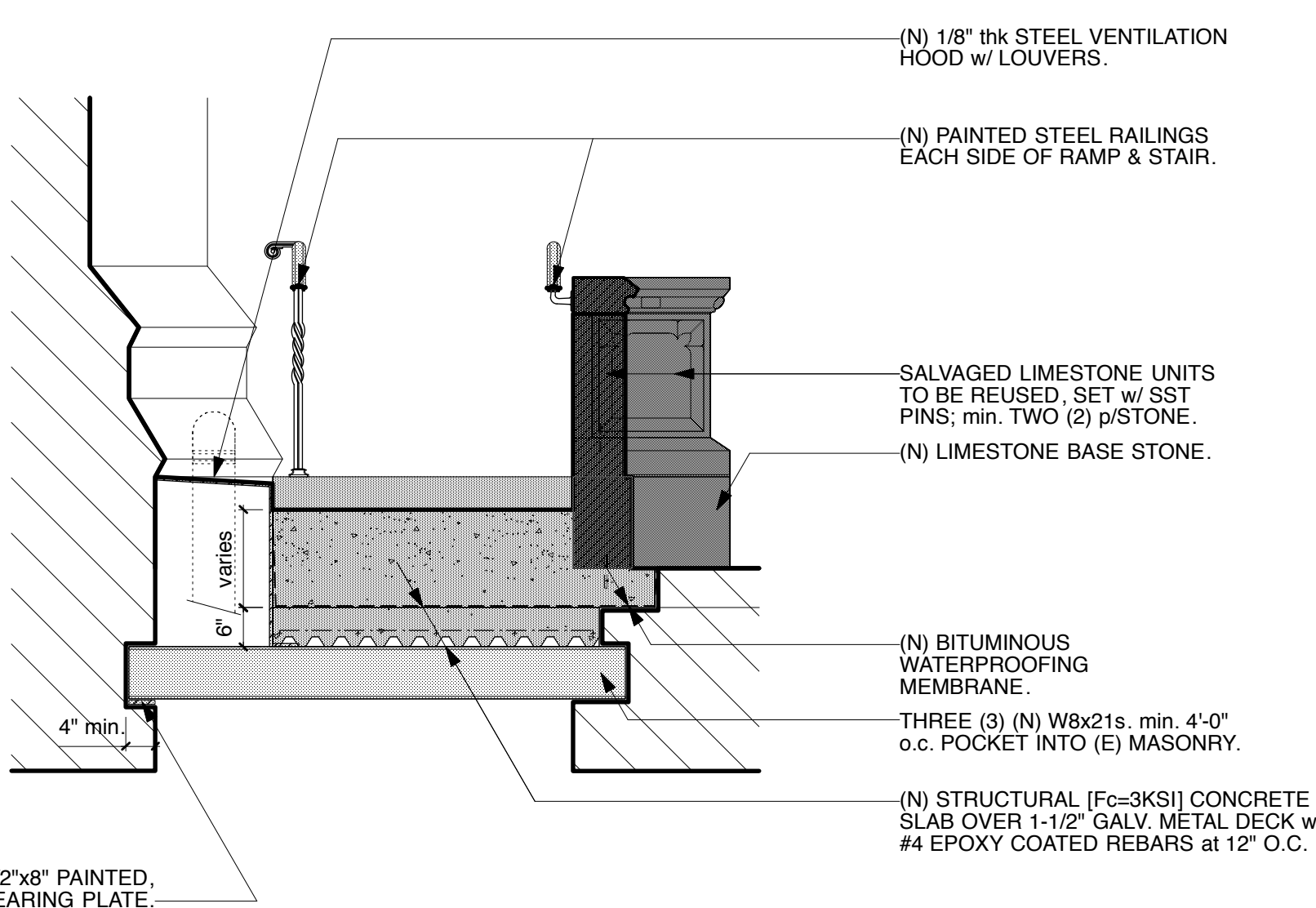
4 SECTION
Scale: 1/2" = 1'-0"



2 PLAN AS PROPOSED
Scale: 1/2" = 1'-0"



5 SECTION
Scale: 1/2" = 1'-0"



6 SECTION [SIDEWALK VAULT BELOW]
Scale: 1/2" = 1'-0"