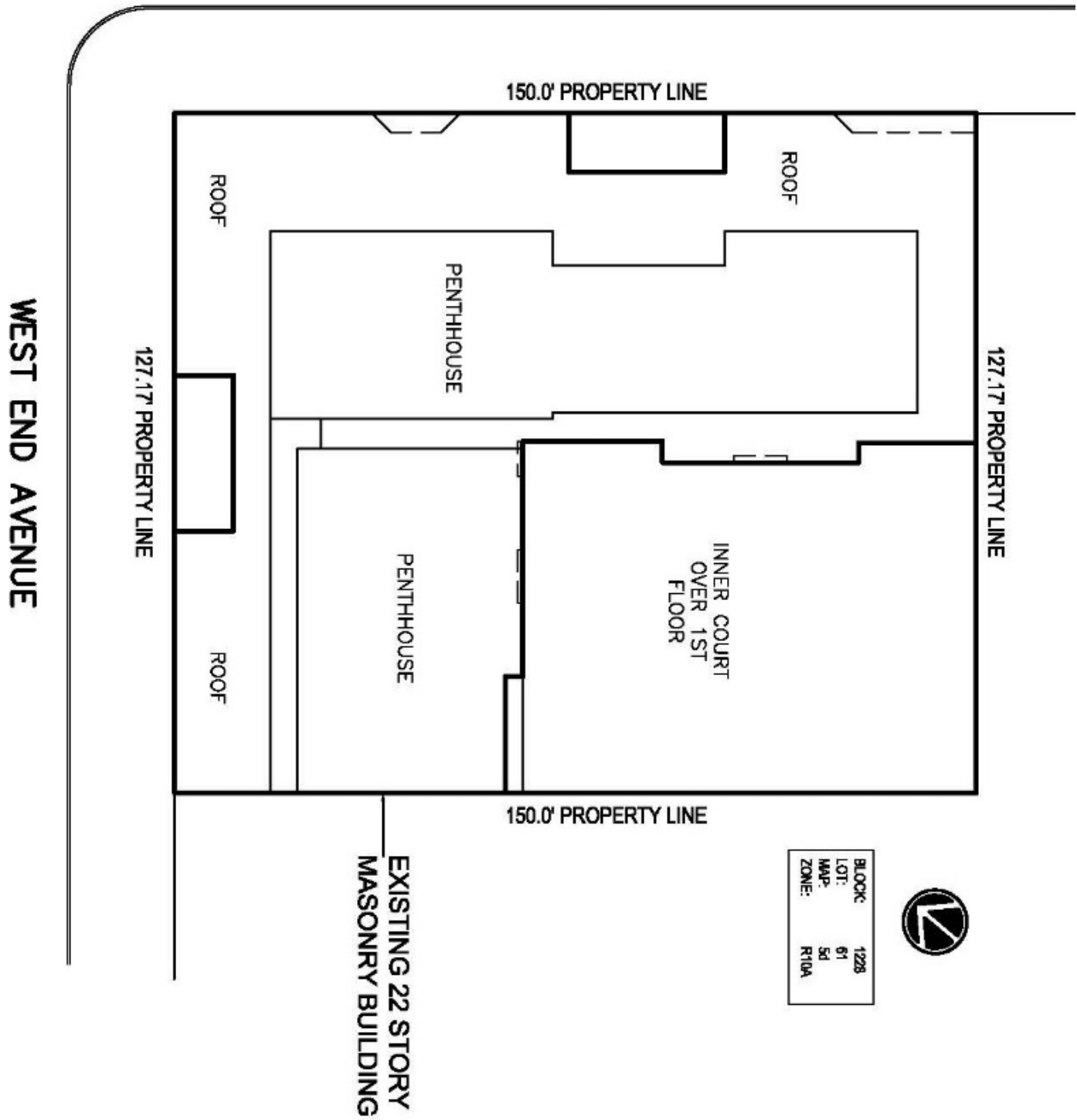


WEST 81 STREET





424 West End Avenue



1980 (Municipal Archives)

Historic Conditions
Freda Design Architect



West End Avenue



West 81st Street



West End Avenue



West 81st Street



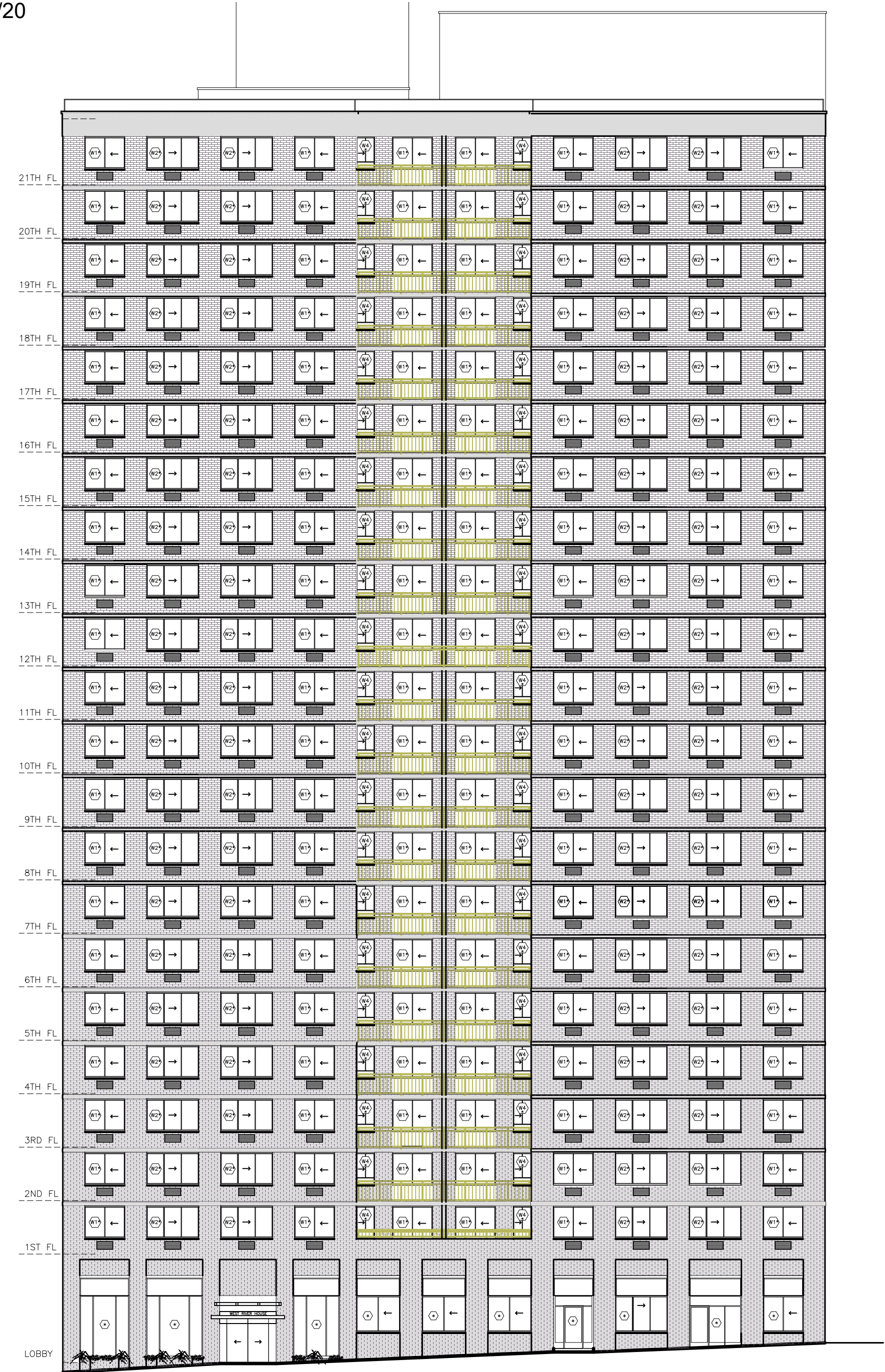
Door & Window Types



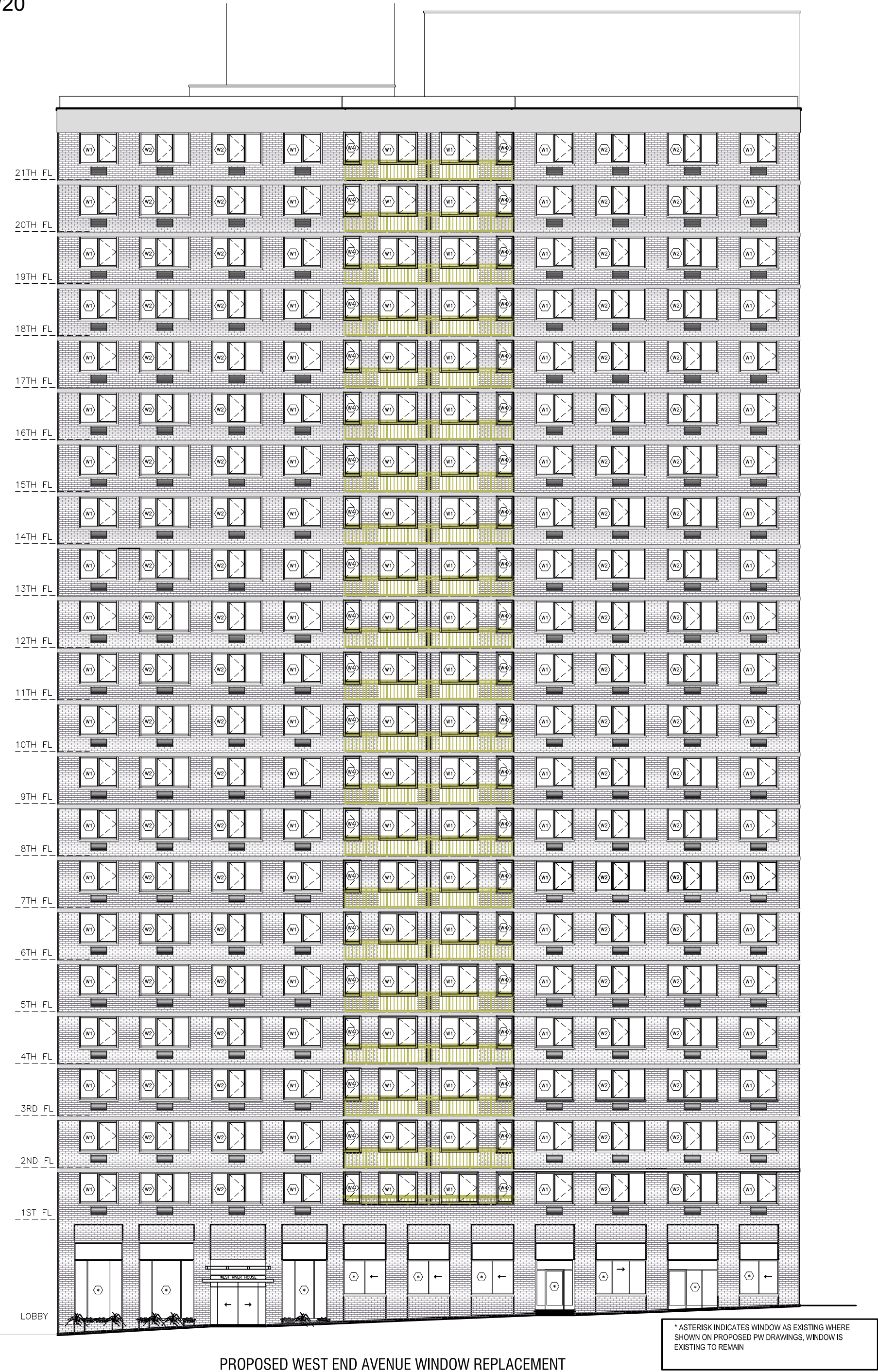
Window Details



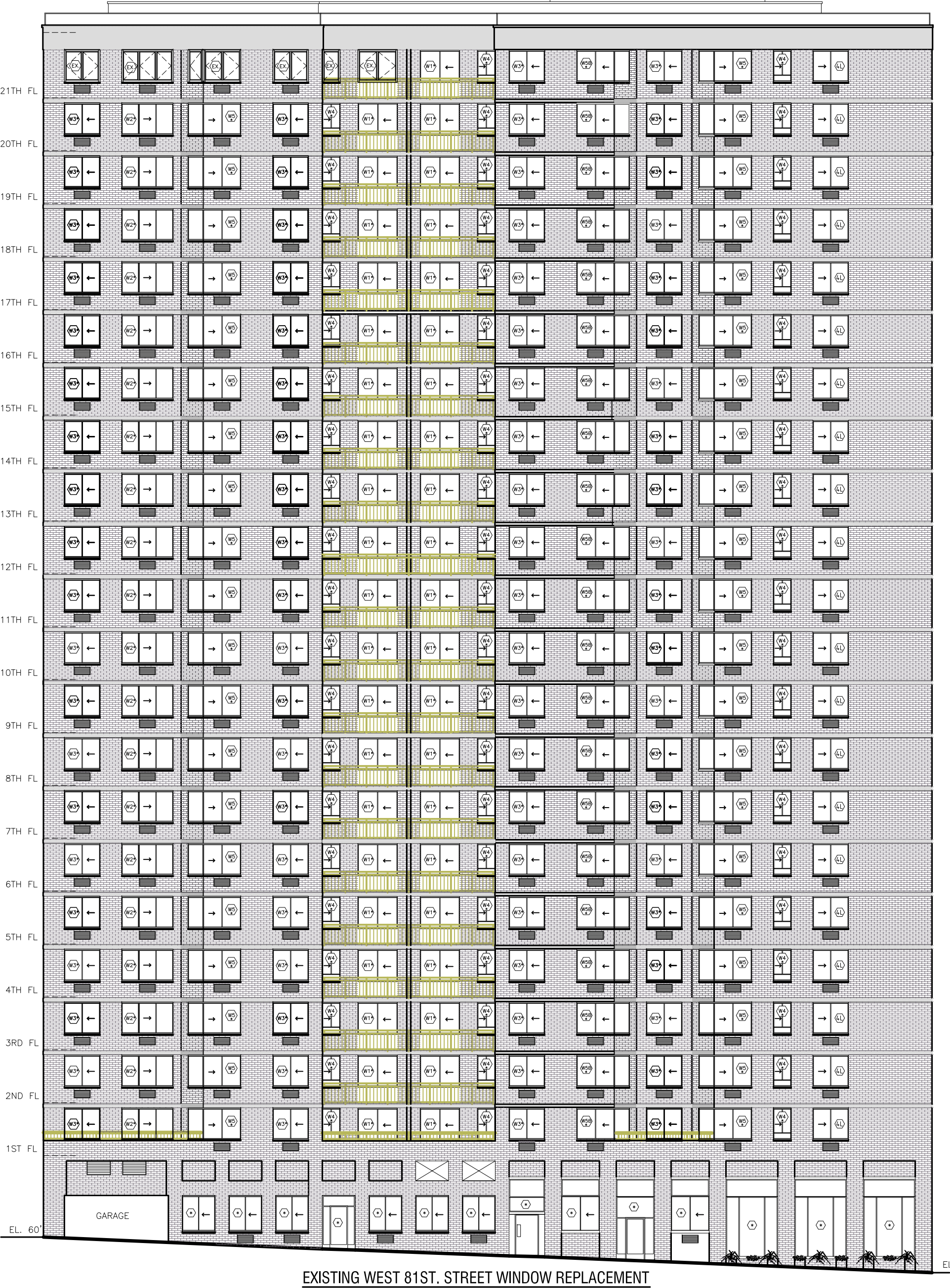
Views from Broadway & from West 80th Street

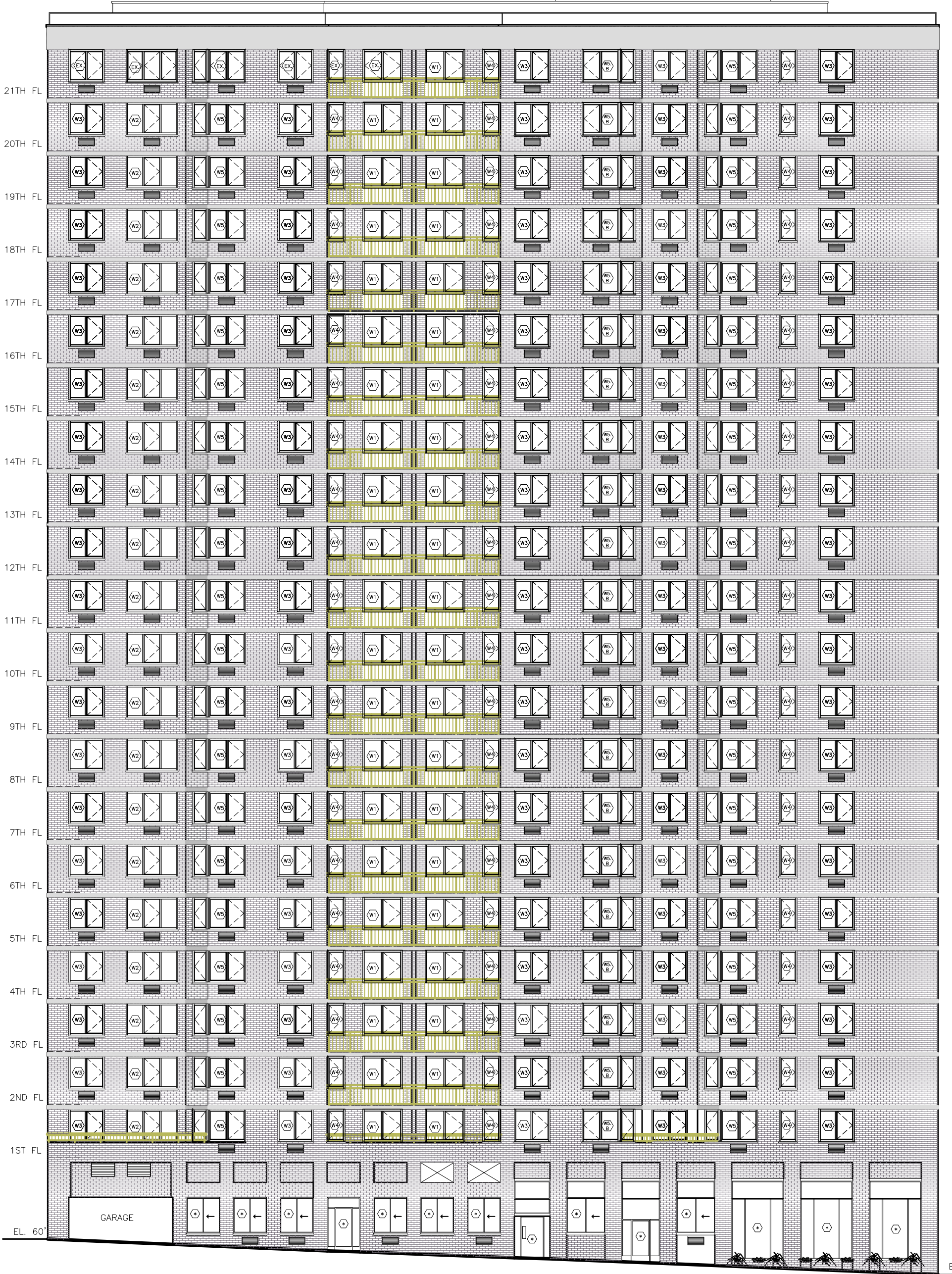


EXISTING WEST END AVENUE WINDOW REPLACEMENT



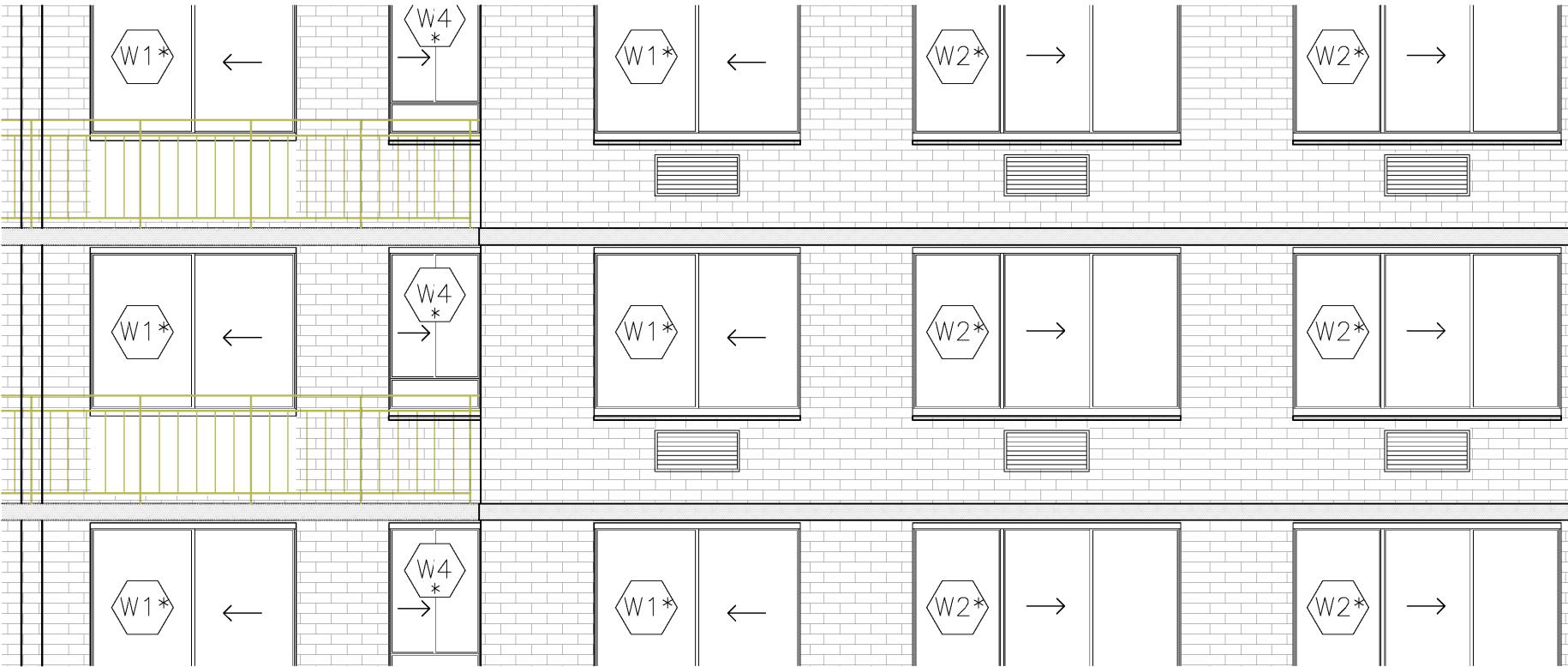
PROPOSED WEST END AVENUE WINDOW REPLACEMENT



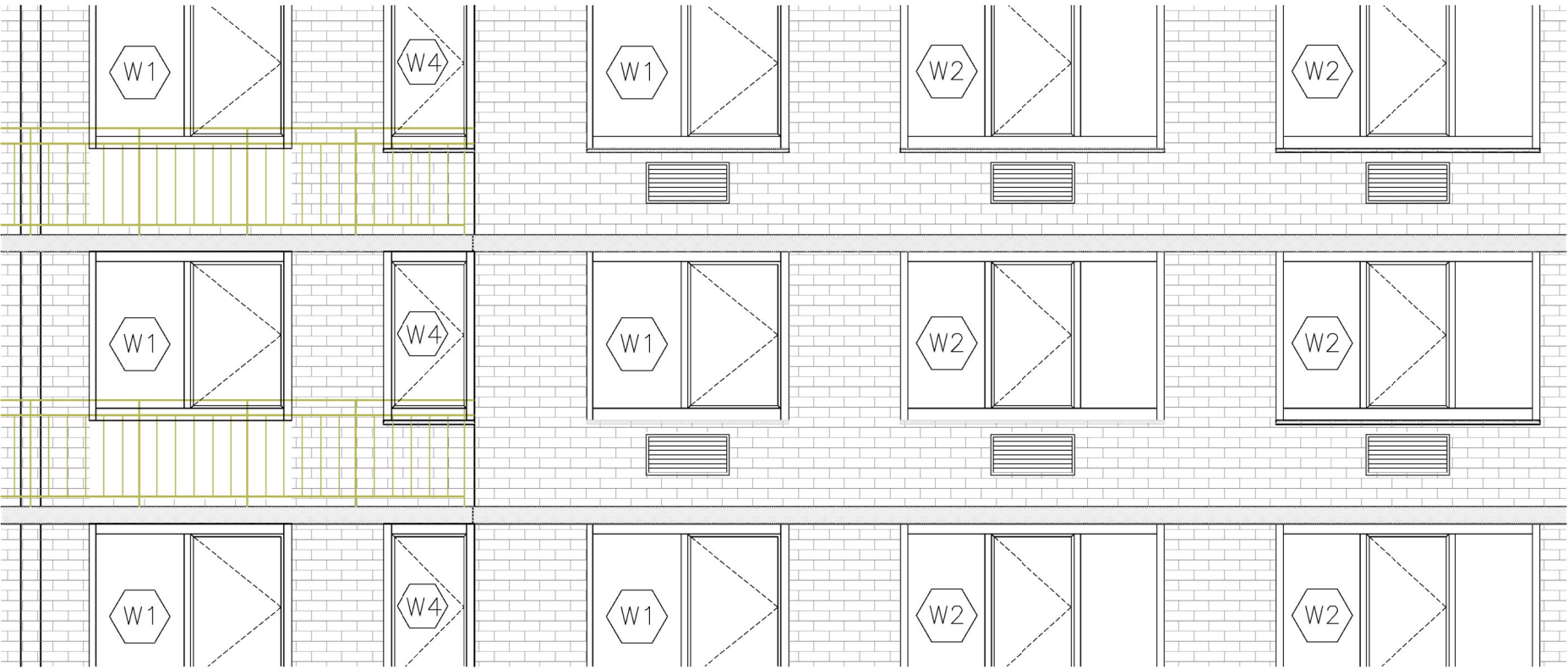


PROPOSED WEST 81ST STREET WINDOW REPLACEMENT

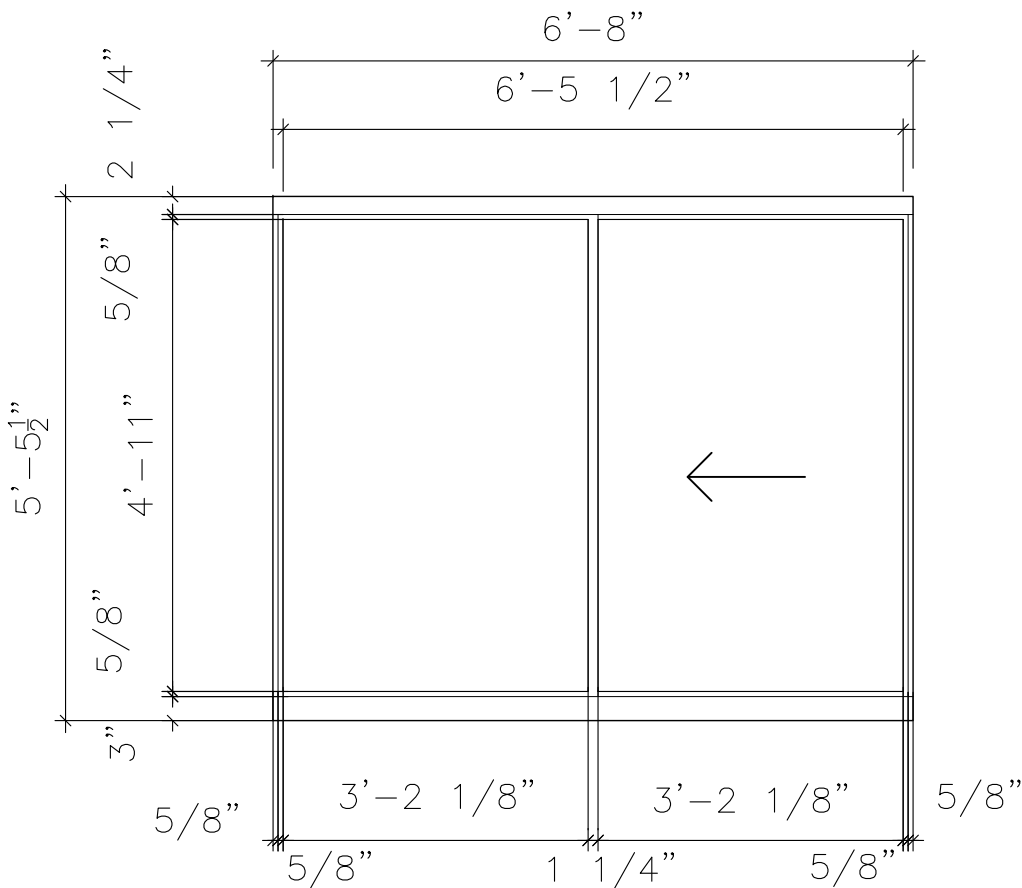
* ASTERISK INDICATES WINDOW AS EXISTING WHERE SHOWN ON PROPOSED PW DRAWINGS, WINDOW IS EXISTING TO REMAIN



EXISTING PARTIAL BUILDING ELEVATION



PROPOSED PARTIAL BUILDING ELEVATION

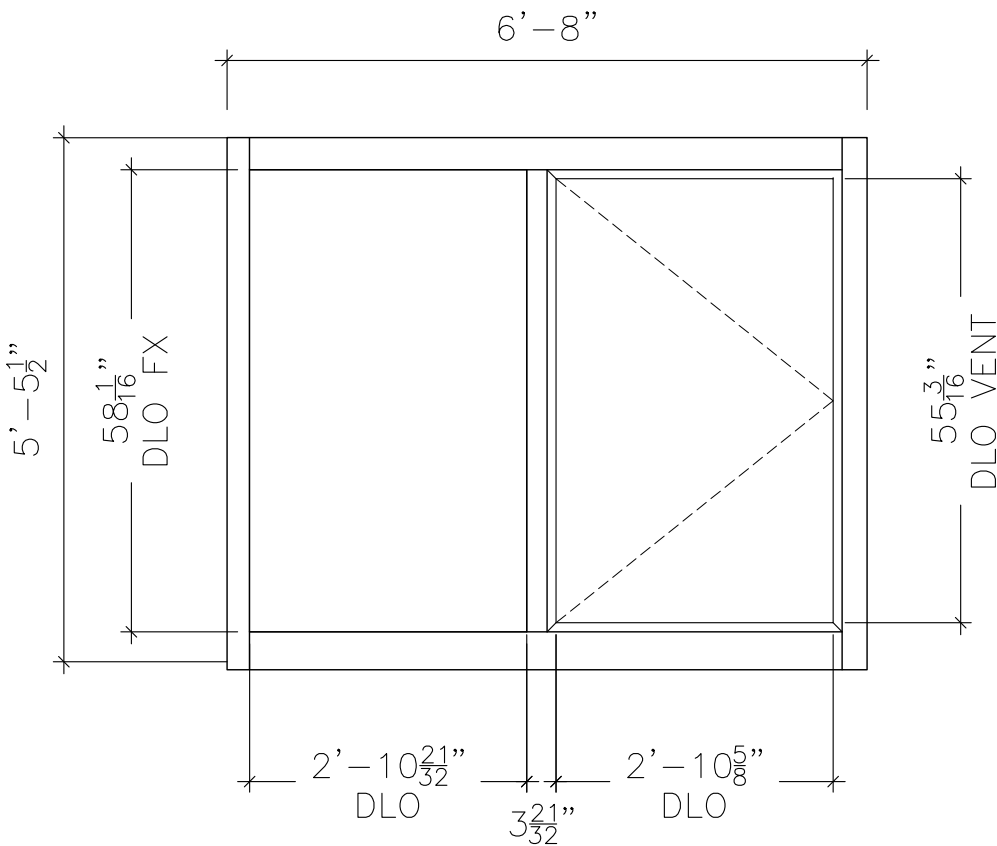


EXISTING WINDOW TYPE

EXISTING TWO-PANEL SLIDING WINDOW
FRAME: ALUMINUM
COLOR: WHITE
TOTAL UNOBSTRUCTED GLASS: 31.2 SF



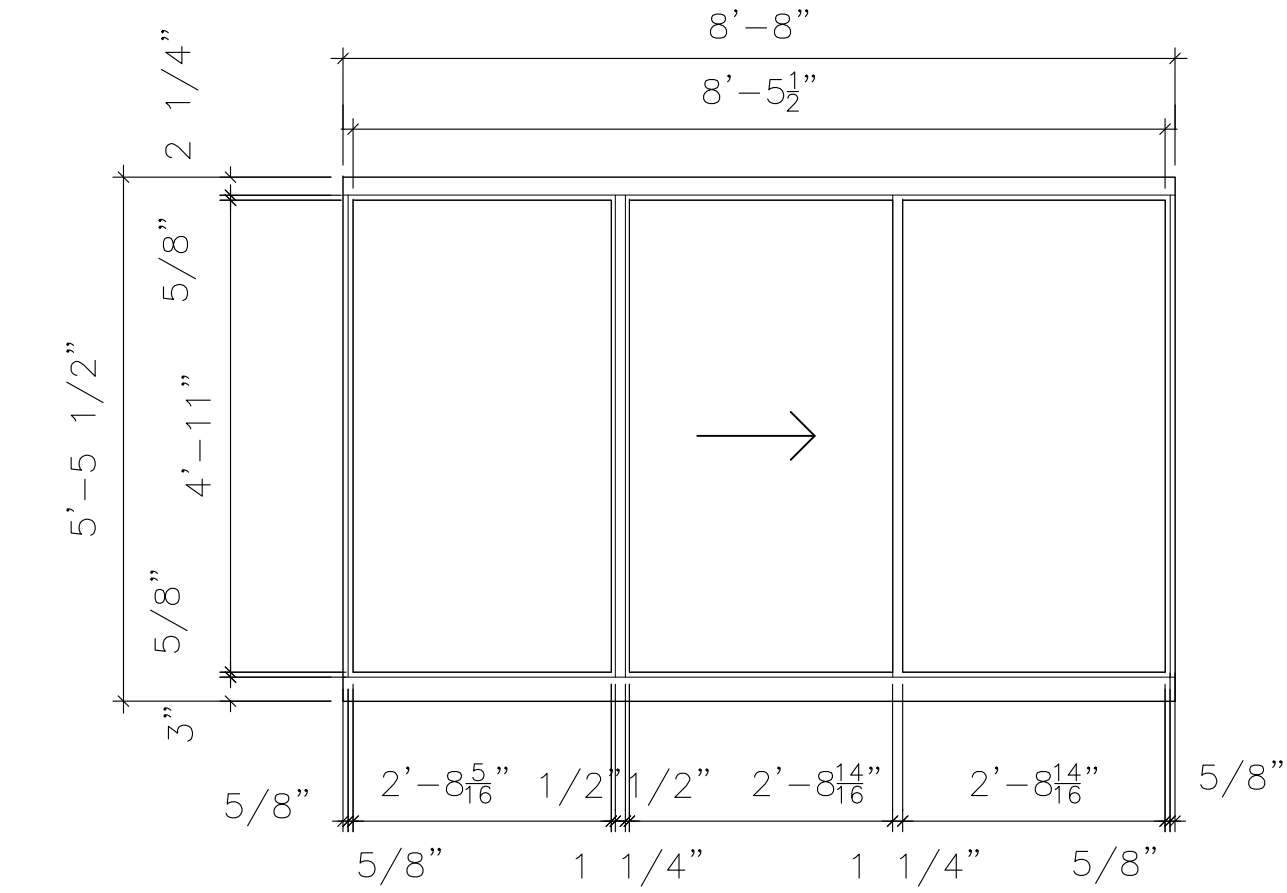
EXISTING UNOBSTRUCTED GLASS – 31.2 SF
PROPOSED UNOBSTRUCTED GLASS – 27.23 SF
13% REDUCTION



PROPOSED WINDOW TYPE

PROPOSED TWO-PANEL CASEMENT WINDOW
FRAME: ALUMINUM
COLOR: WHITE
TOTAL UNOBSTRUCTED GLASS: 27.23 SF



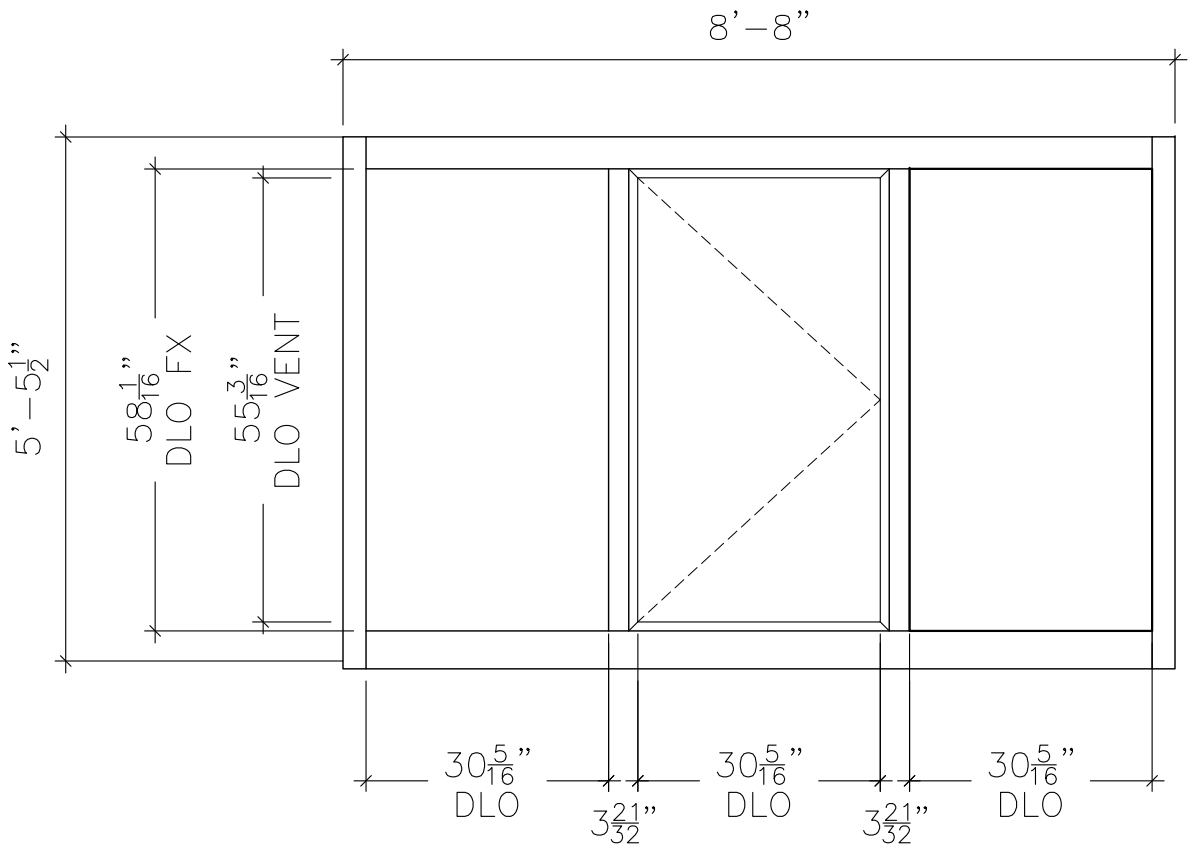


EXISTING WINDOW TYPE

EXISTING 3-PANEL SLIDING WINDOW
FRAME: ALUMINUM
COLOR: WHITE
TOTAL UNOBSTRUCTED GLASS: 40.1 SF



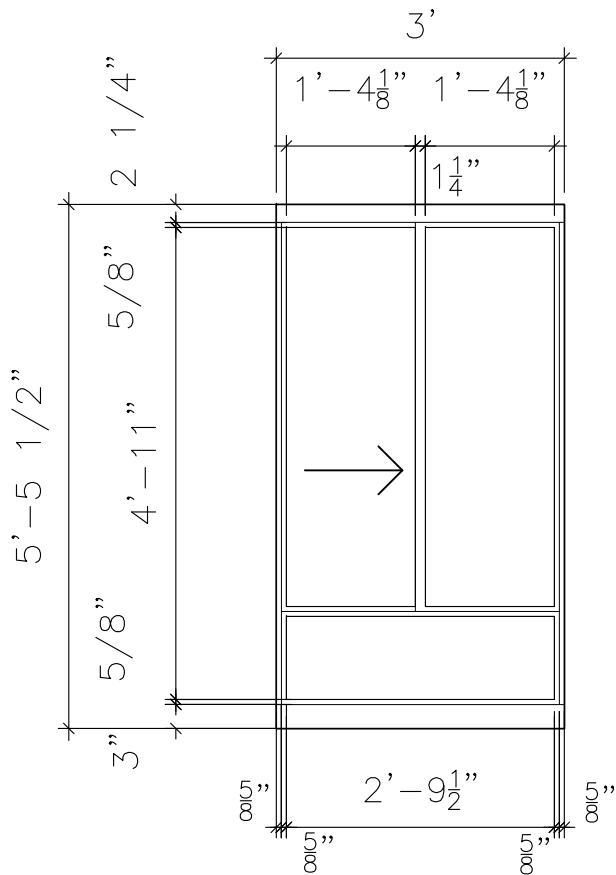
EXISTING UNOBSTRUCTED GLASS	- 40.1 SF
PROPOSED UNOBSTRUCTED GLASS	- 35.9 SF
11% REDUCTION	



PROPOSED WINDOW TYPE

PROPOSED 3-PANEL CASEMENT WINDOW
FRAME: ALUMINUM
COLOR: WHITE
TOTAL UNOBSTRUCTED GLASS: 35.9 SF



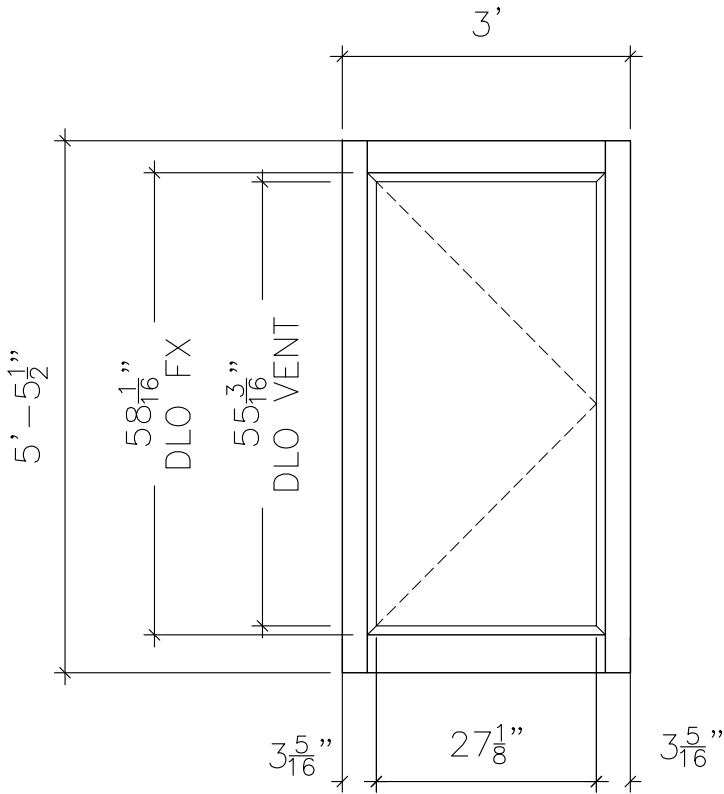


EXISTING WINDOW TYPE



EXISTING 2-PANEL SLIDING WINDOW
FRAME: ALUMINUM
COLOR: WHITE
TOTAL UNOBSTRUCTED GLASS: 13 SF

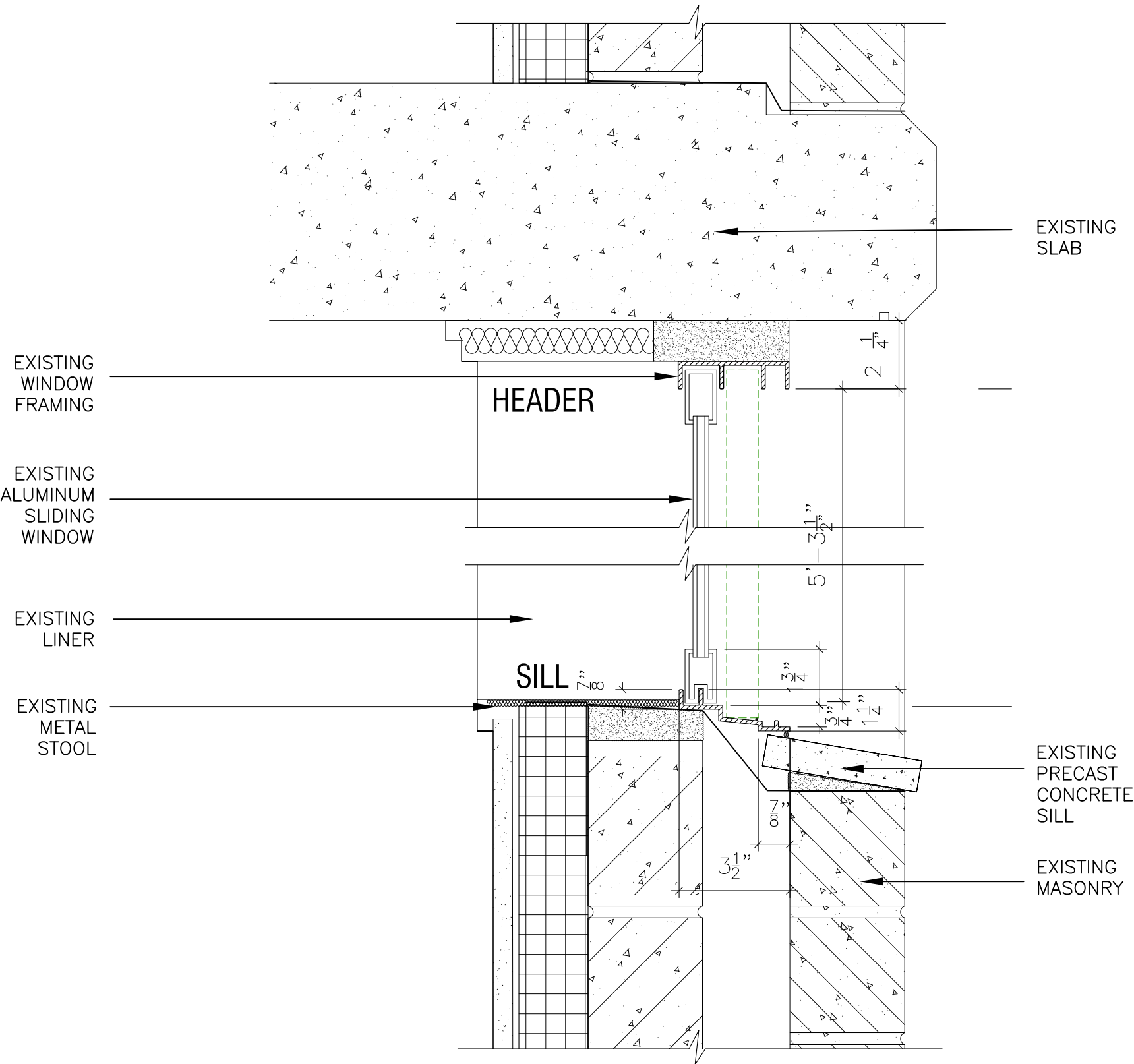
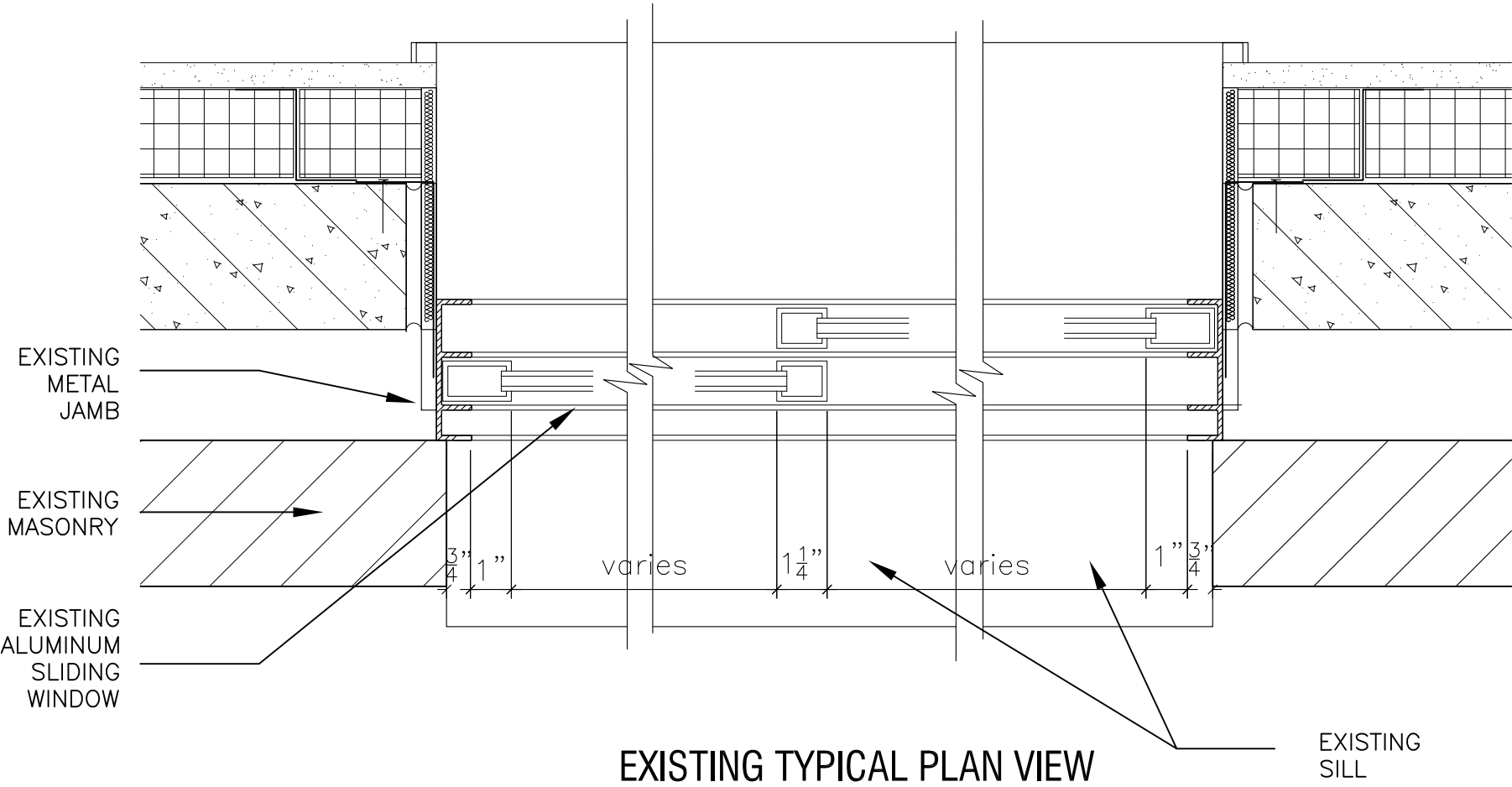
EXISTING UNOBSTRUCTED GLASS – 13 SF
PROPOSED UNOBSTRUCTED GLASS – 10.6 SF
19% REDUCTION

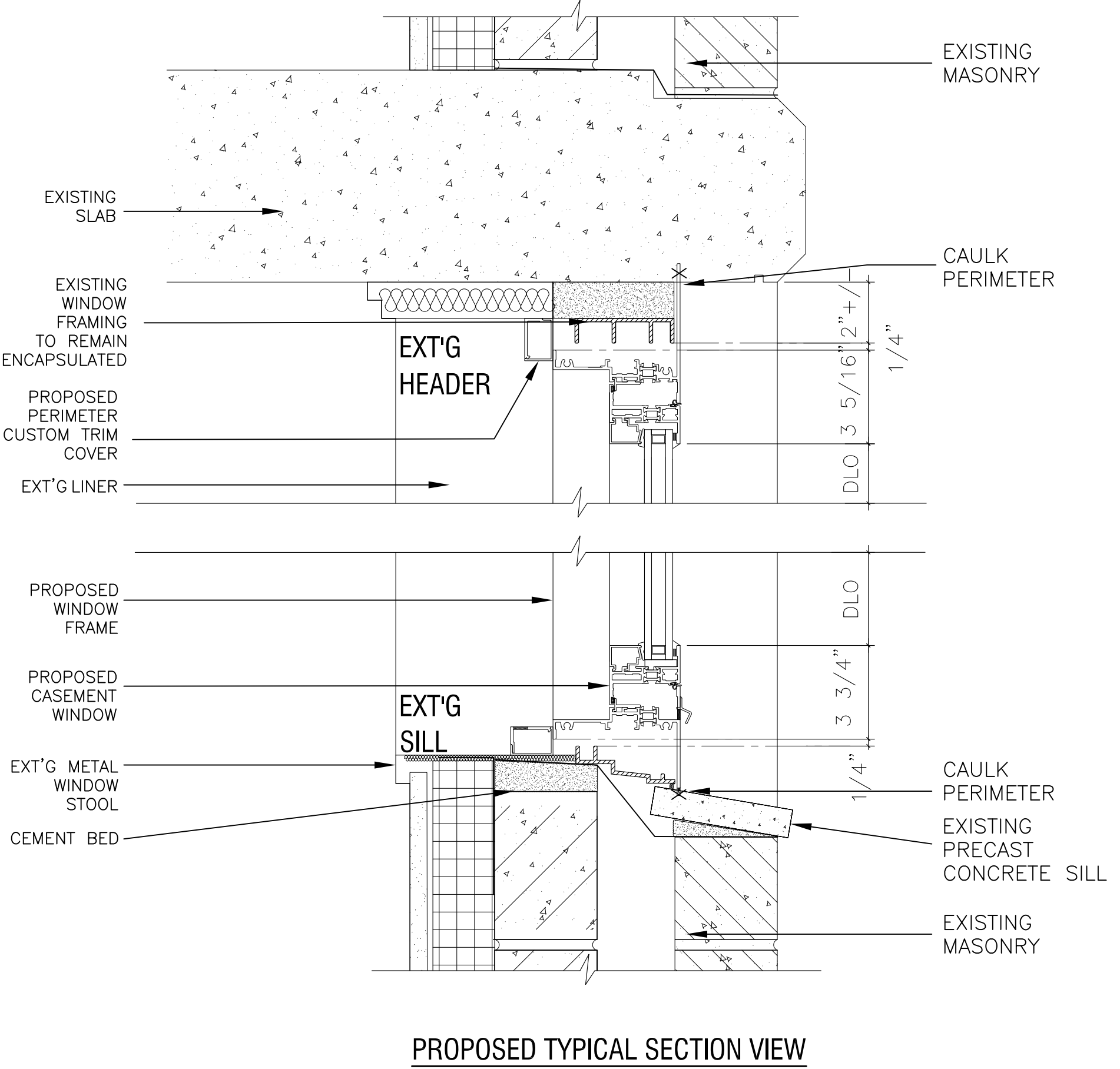
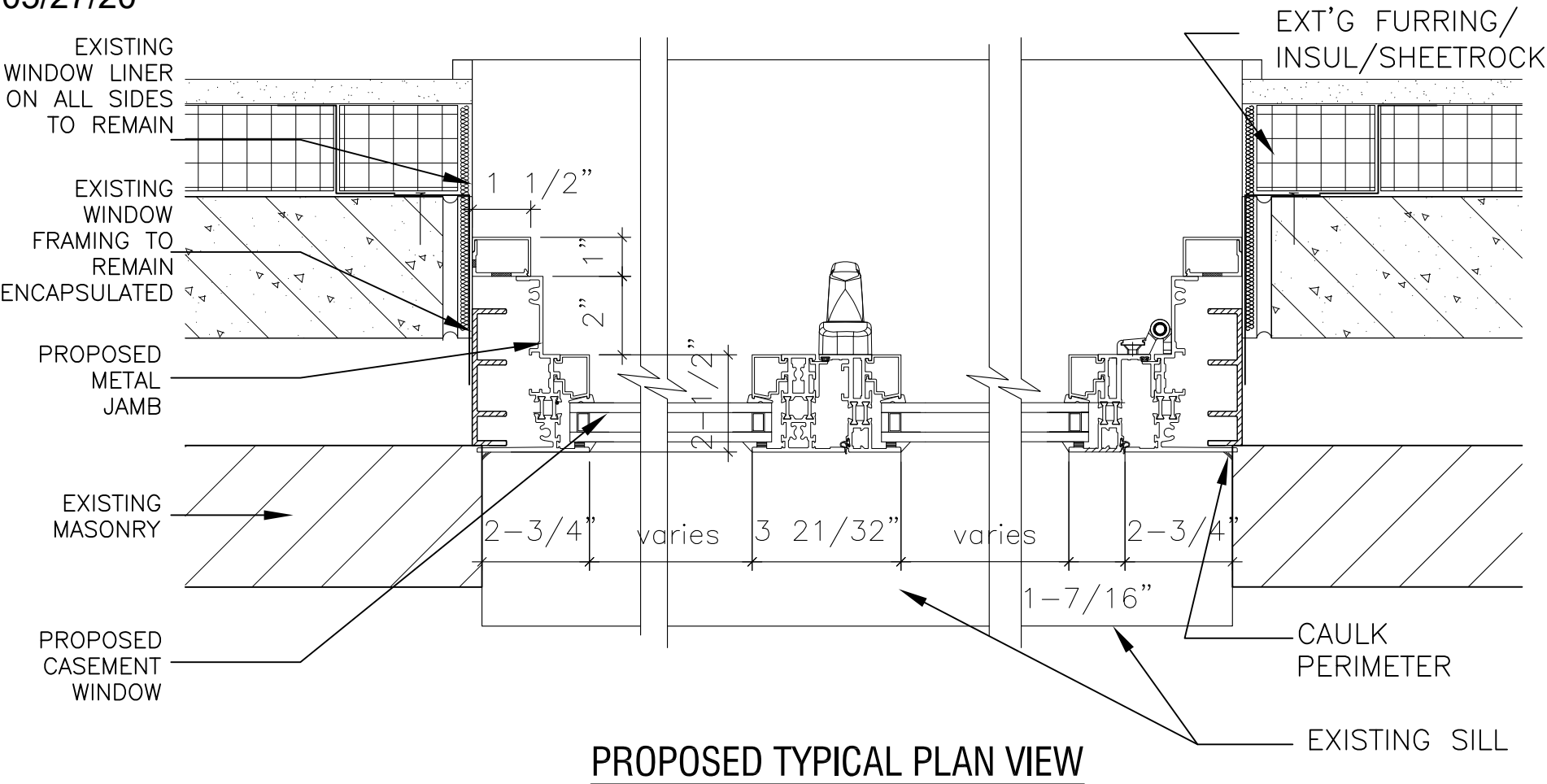


PROPOSED WINDOW TYPE



PROPOSED 1-PANEL CASEMENT WINDOW
FRAME: ALUMINUM
COLOR: WHITE
TOTAL UNOBSTRUCTED GLASS: 10.6 SF



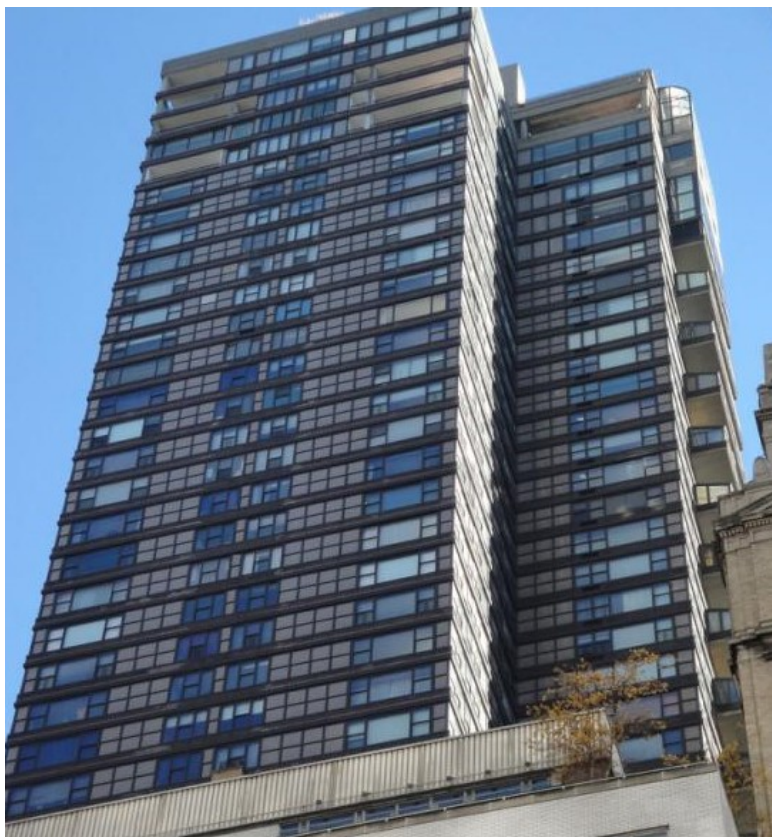




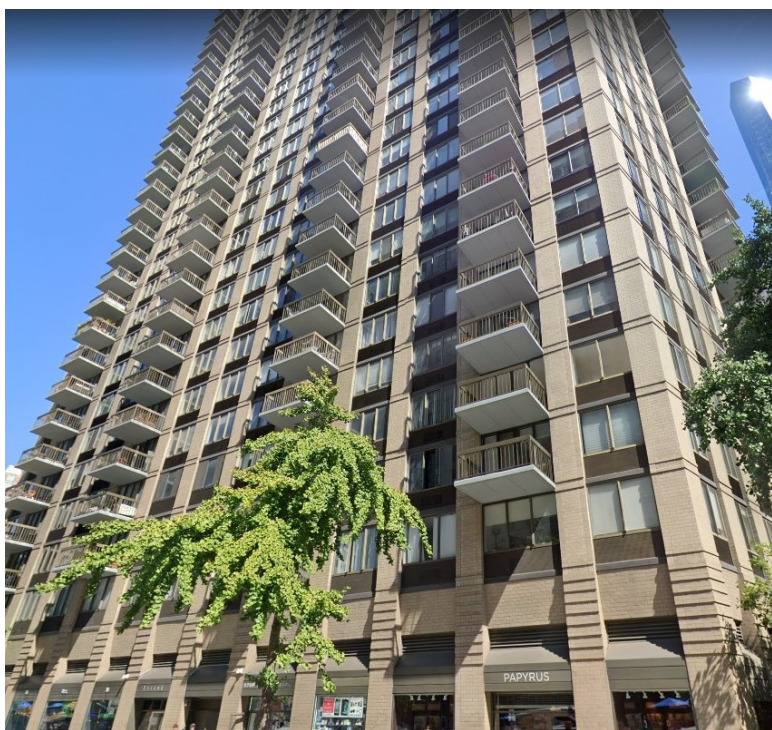
424 West End Avenue



325 E 56th St (1978 DOB NB)



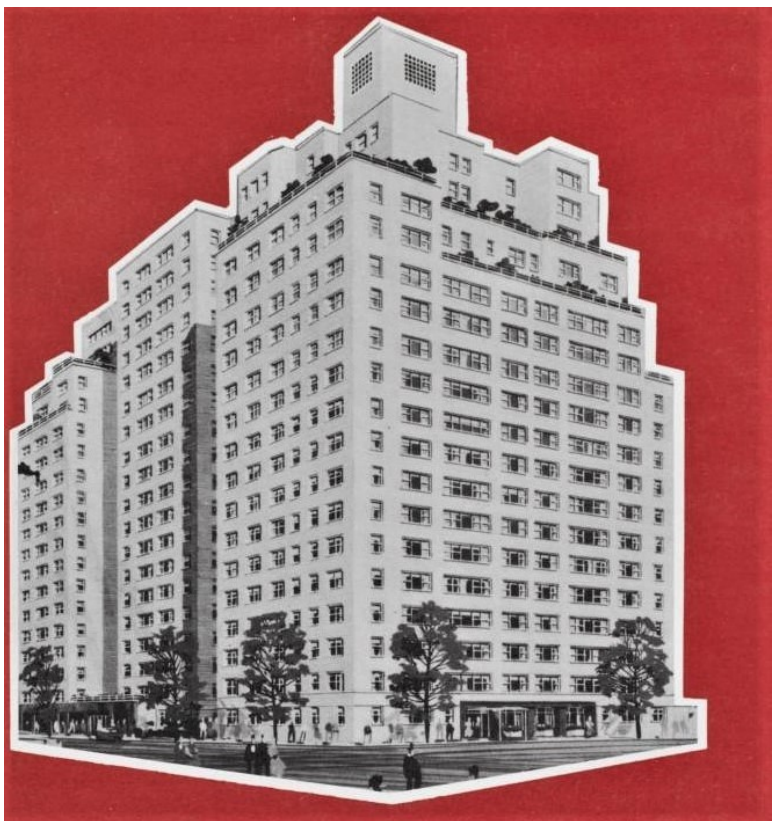
Galleria, 117 E 57th St (1975)



5 E 22nd St (1981 DOB NB)



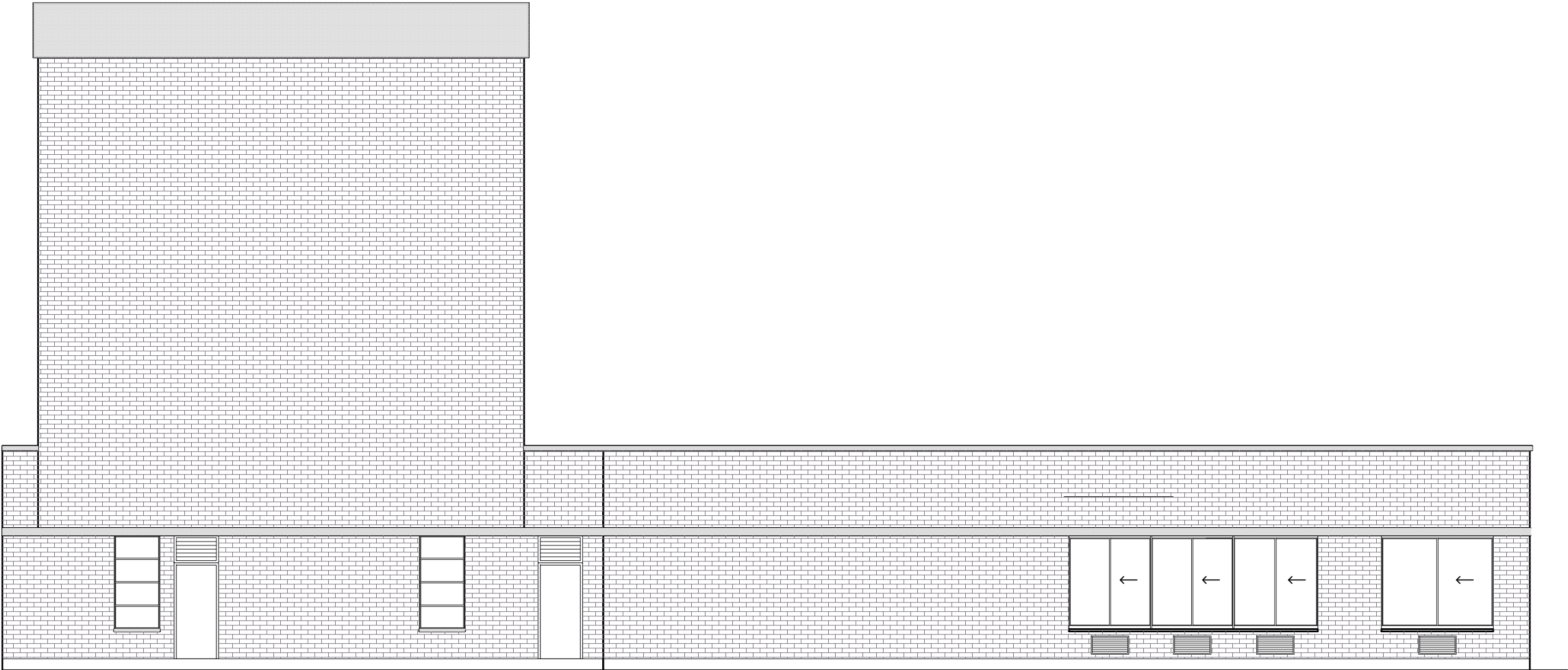
127 E 34th St (1974 DOB NB)



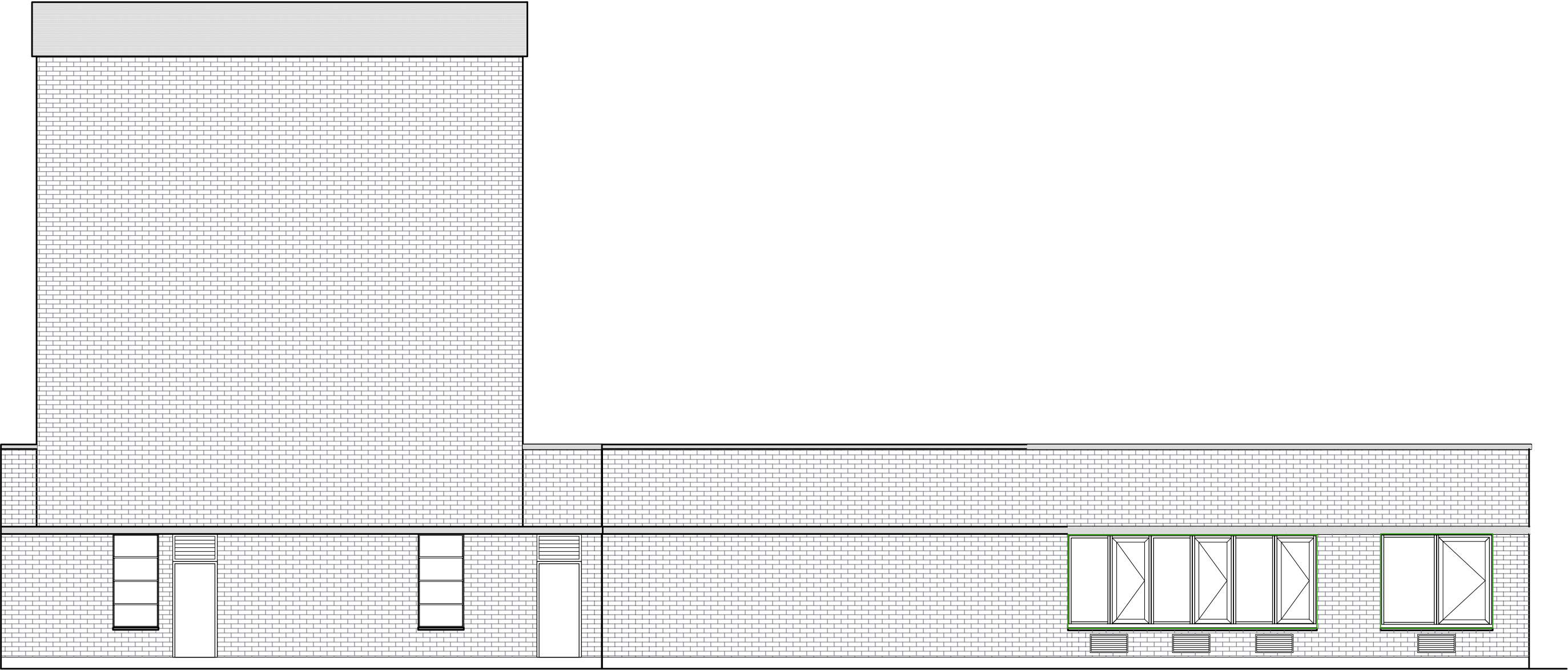
201 E 21st St (1950 DOB NB)



200 E 61st St (1984)



PENTHOUSE SOUTH ELEVATION — EXISTING WINDOWS



PENTHOUSE SOUTH ELEVATION — PROPOSED WINDOWS