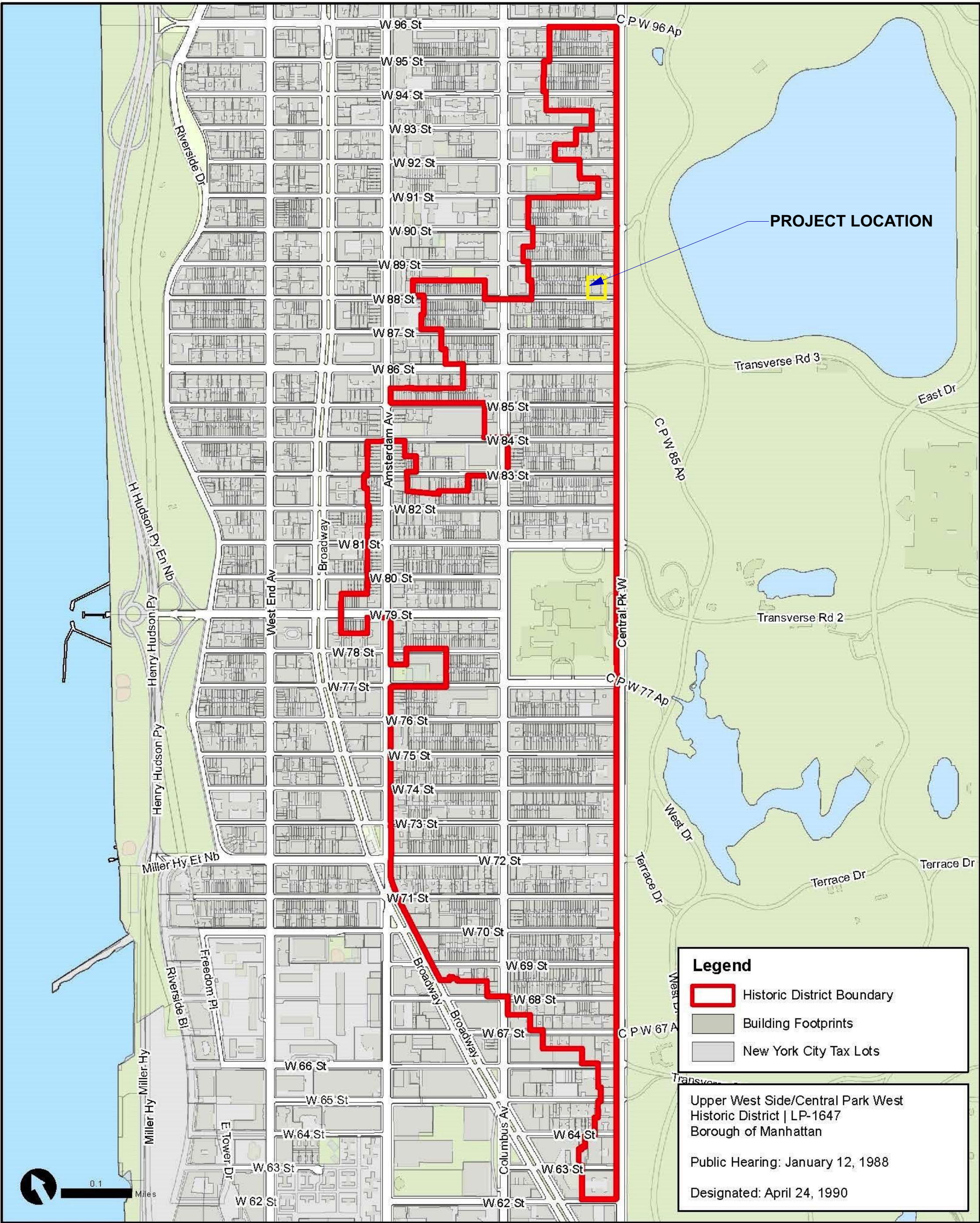


PRESENTATION SHEET INDEX	
P01	INTRO SHEET
P02	CURRENT SCHOOL BUILDING
P03	HISTORIC IMAGES
P04	EXISTING DETAILS
P05	POOR CONDITIONS
P06	POOR WALL & STAIR CONDITIONS
P07	FLOOR PLANS
P08	AREAWAY GUARD RAIL DETAILS
P09	PROPOSED VIEWS

Upper West Side/Central Park West Historic District | LP-1647



Graphic Source: Map PLUTO, Edition 18v1, Author: New York City Landmarks Preservation Commission, LCR Date: 3.28.2019

HISTORIC DISTRICT MAP



OASIS MAP

PROJECT LOCATION



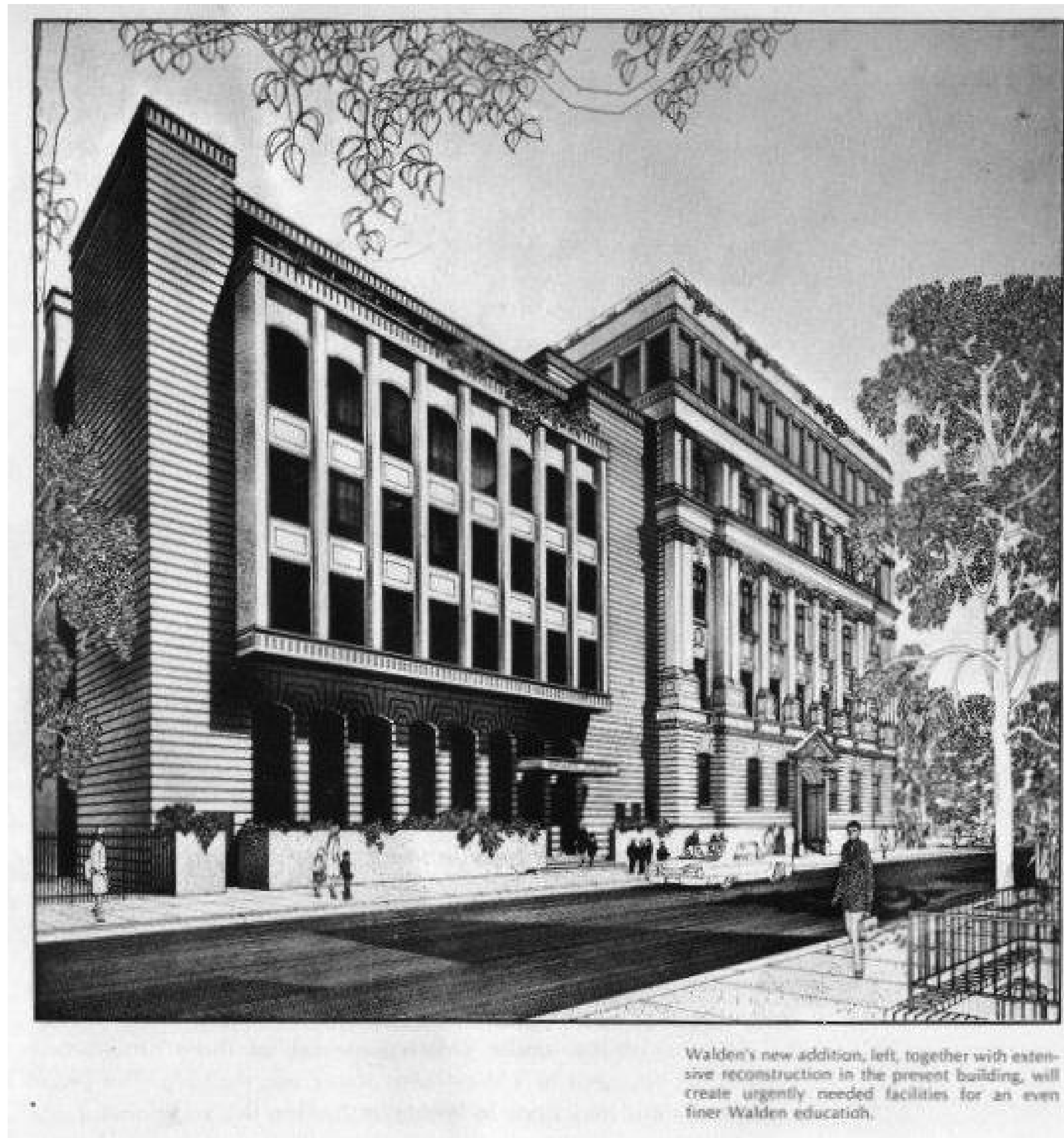
STREET VIEW looking NE



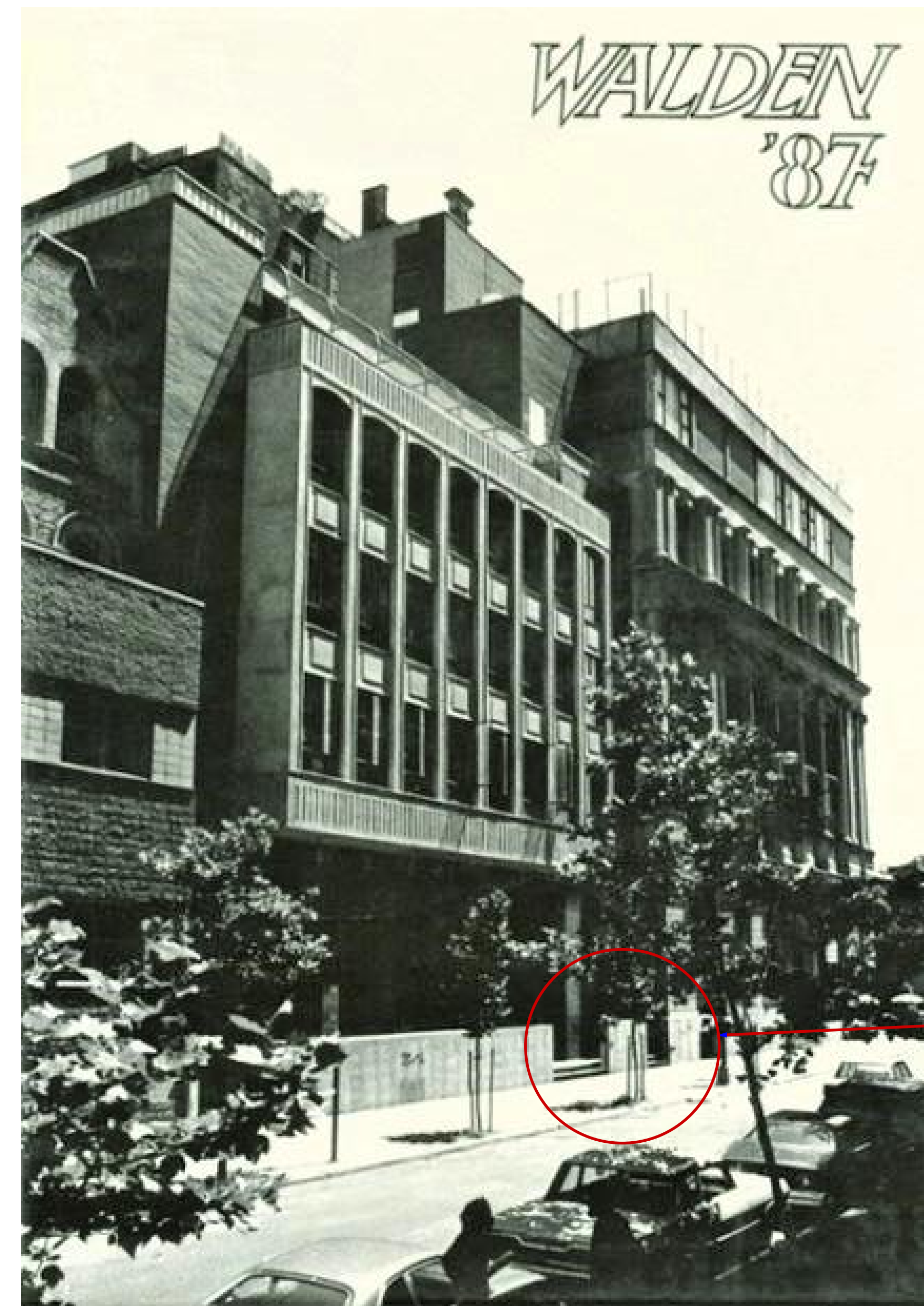


**CURRENT SCHOOL BUILDING**





**WALDEN DESIGN RENDERING c: 1967 - 73**



**WALDEN - 1987 (CARRIEANNEBROWNIAN.COM)**





**EXISTING SIDEWALK VIEW LOOKING NW**



**CURB VIEW BUILDING ENTRY**



**EXISTING BUILDING ENTRY**



**EGRESS STAIR LANDING AT ENTRY**





**DETERIORATING CONCRETE WALL**



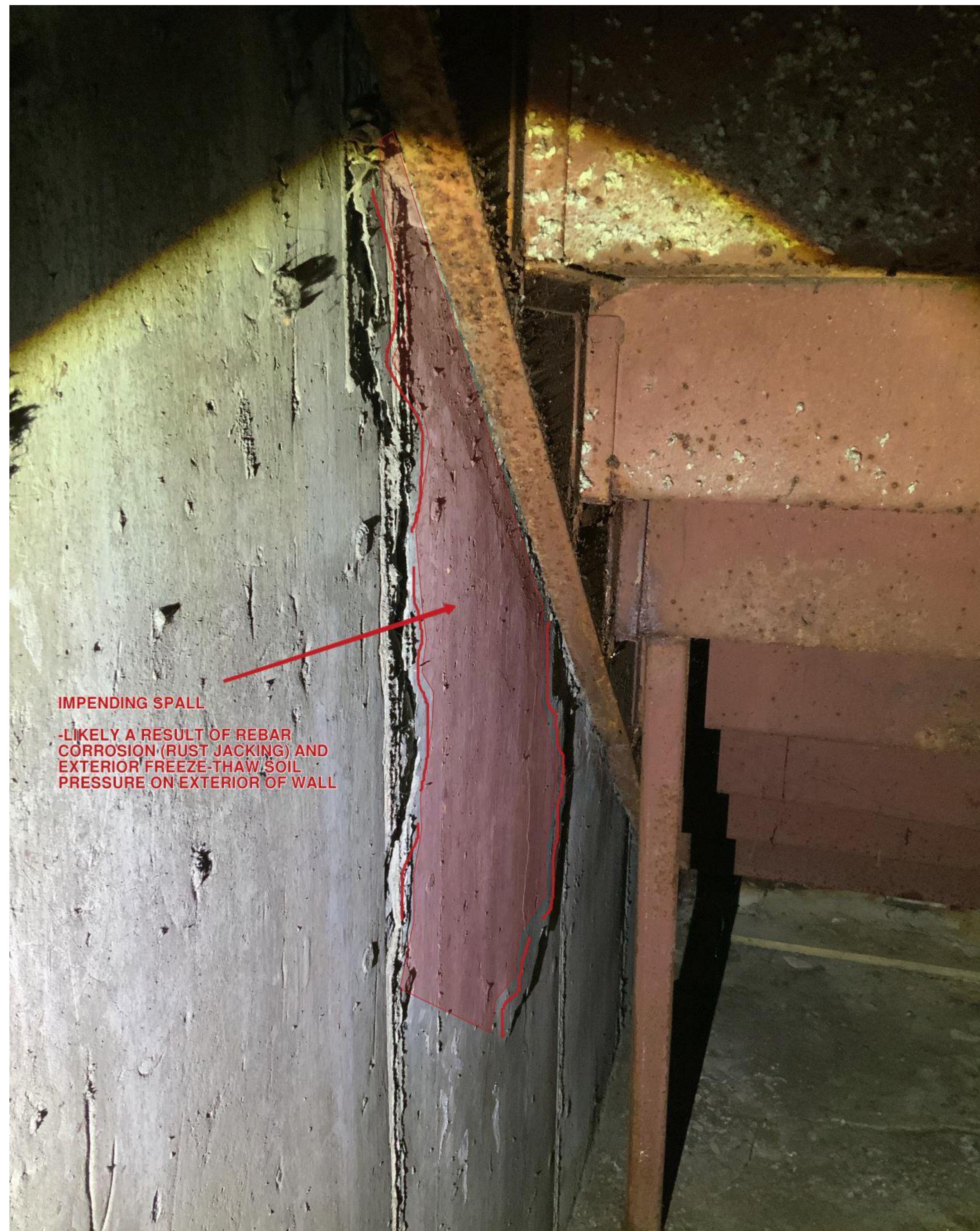
**SPALLED CONCRETE WALL**



**VIEW OF RUSTING METAL STAIR**

NOTE PART OF METAL  
STRINGER RUSTED AWAY





**WALL DETERIORATION**

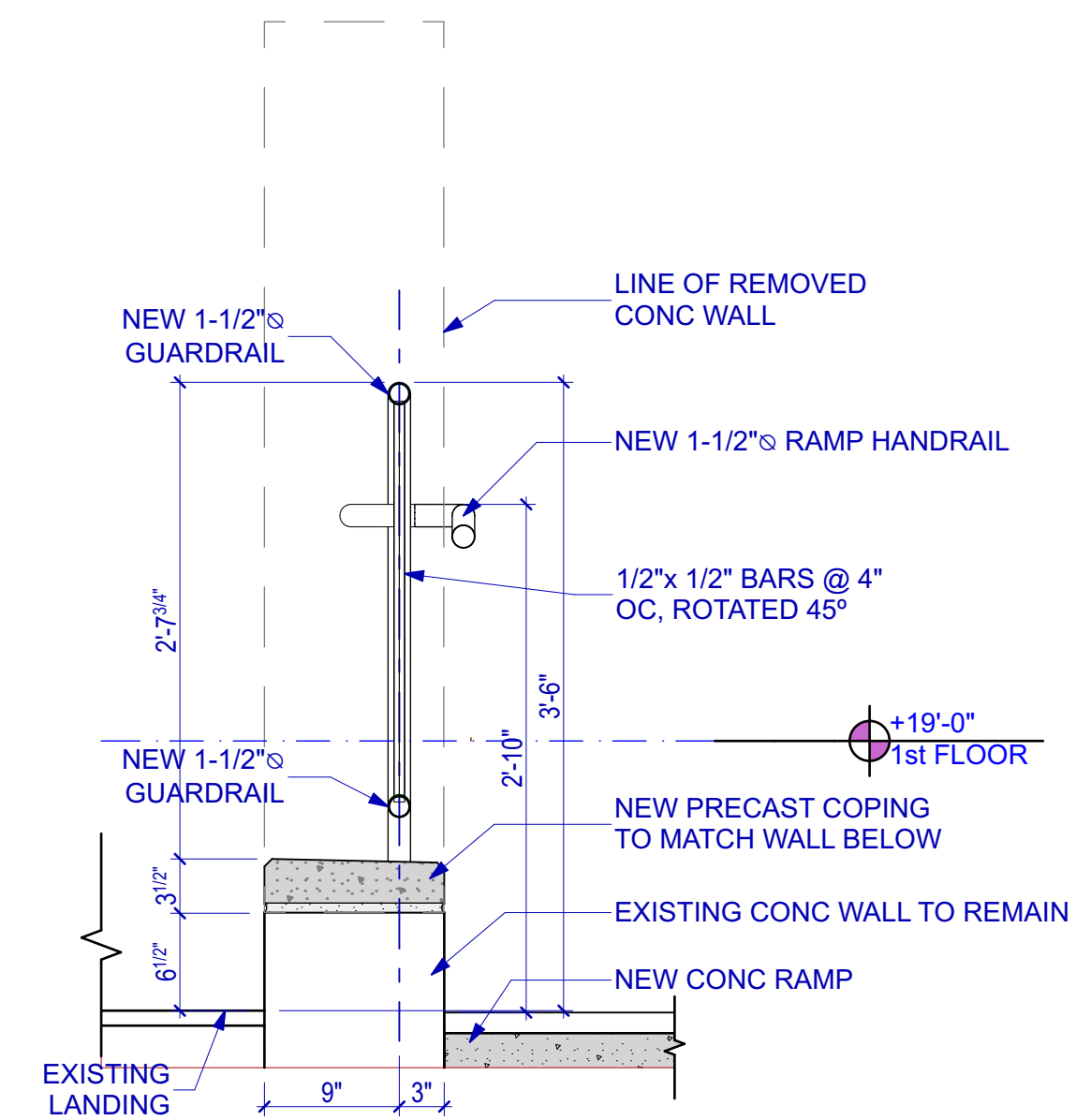


**LANDING BEAM & STAIR CONDITION**

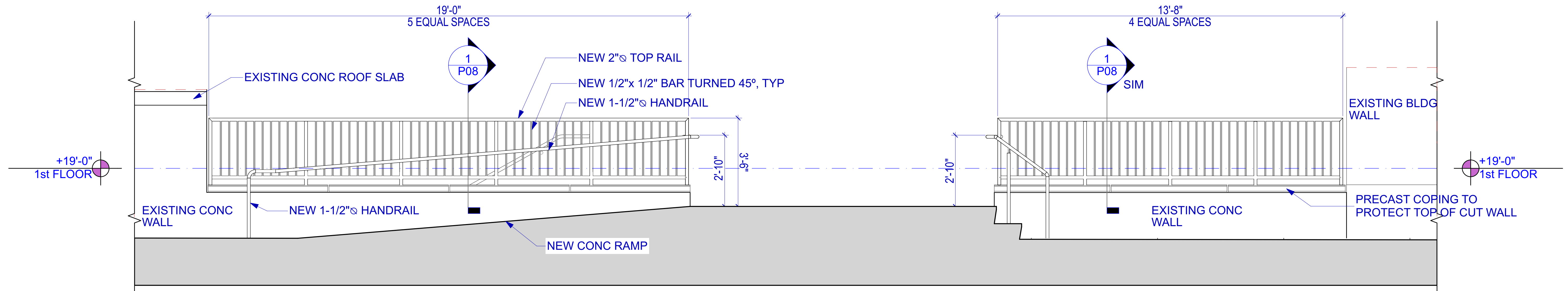








**1 AREAWAY GUARD RAIL SECTION**  
SCALE: 1" = 1'-0"



**2 AREAWAY GUARD RAIL ELEVATION**  
SCALE: 1/2" = 1'-0"





**SIDEWALK VIEW of RAMP & ADA CHAIR LIFT**



**STREET VIEW of RAMP & ADA CHAIR LIFT**