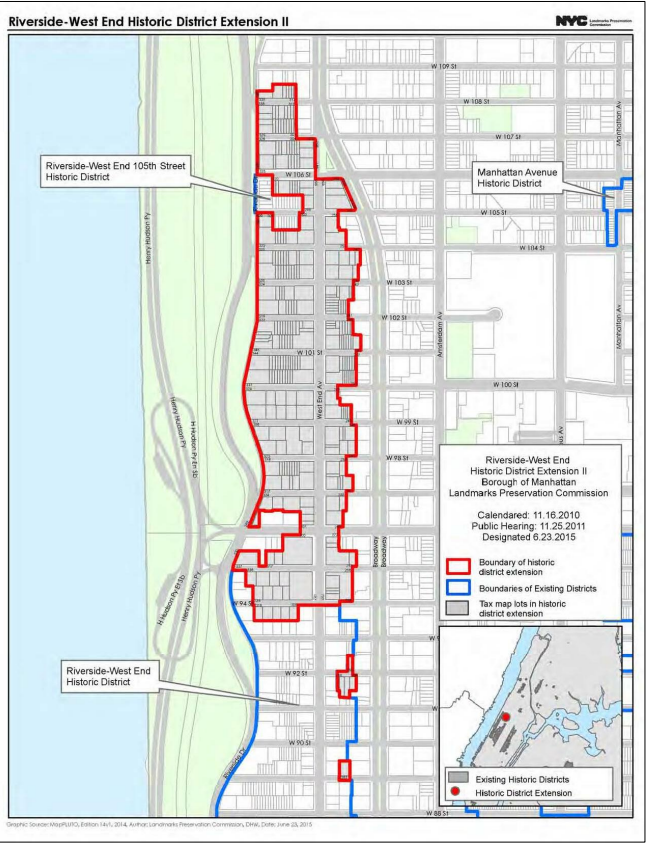




1940's TAX PHOTO



CURRENT PHOTO



## RIVERSIDE-WEST END HISTORIC DISTRICT MAP

### PROJECT DESCRIPTION

Application is to construct a full-width rear yard extension on the basement and first floors in brick to match the existing rear facade. One window on the second floor rear will be changed to a door for access to a roof terrace on the new extension. A new double-hung window to match existing double-hung windows will be installed in a new masonry opening at the rear of the 2nd floor.

311 WEST 102nd ST.  
NEW YORK, NY 10025

RIVERSIDE - WEST END  
HISTORIC DISTRICT

OCTOBER 14, 2021

TITLE PAGE

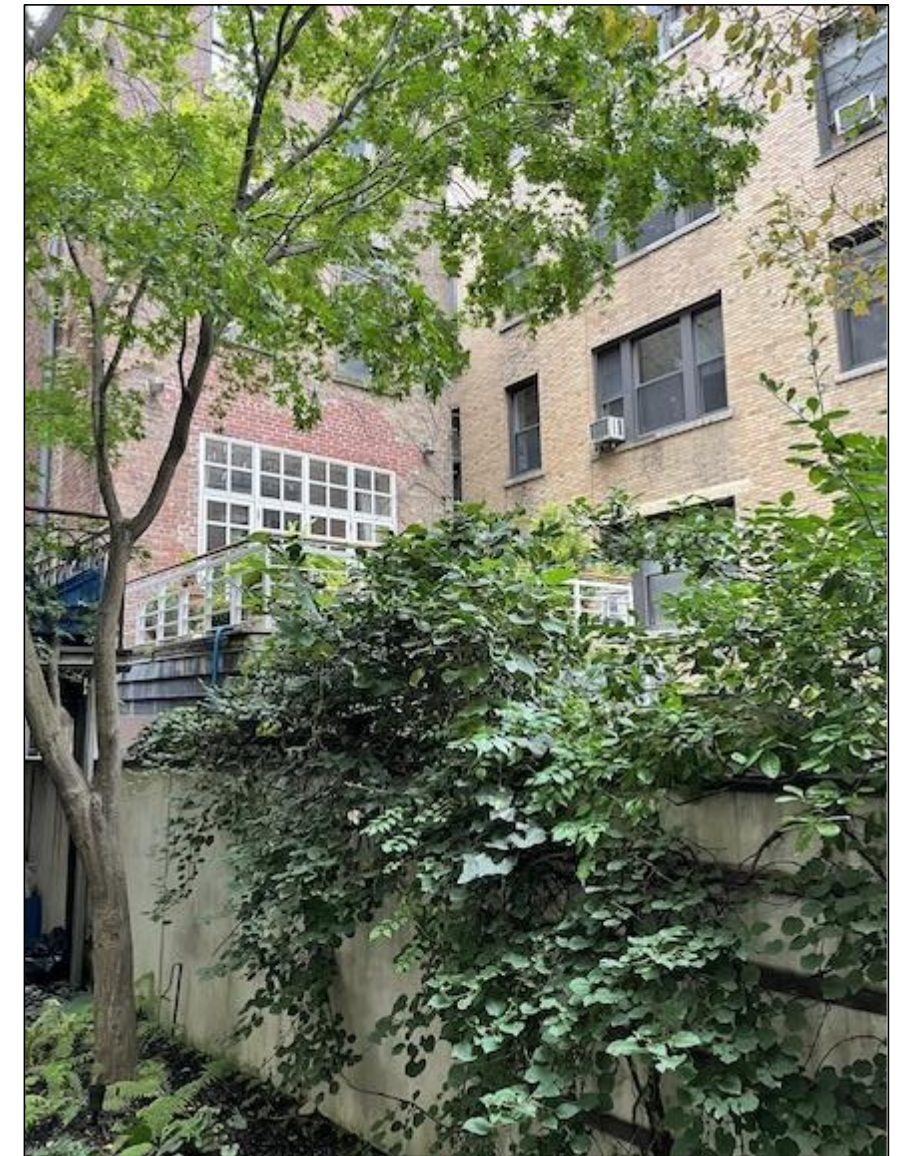




307 & 309 WEST 102



311 WEST 102 - PROJECT LOCATION



313 WEST 102



VIEW FROM ROOF OF 311 WEST 102  
LOOKING NORTH

311 WEST 102nd ST.  
NEW YORK, NY 10025

RIVERSIDE - WEST END  
HISTORIC DISTRICT

OCTOBER 14, 2021

REAR YARD  
PHOTOS

02



LEGEND:



DECK



1 STORY



2 STORY



4 STORY



5 STORY



10 STORY



13+ STORY



EXCAVATED TO CELLAR  
LEVEL



PROPOSED 2 STORY  
EXTENSION AT 311 W. 102nd

311 WEST 102nd STREET

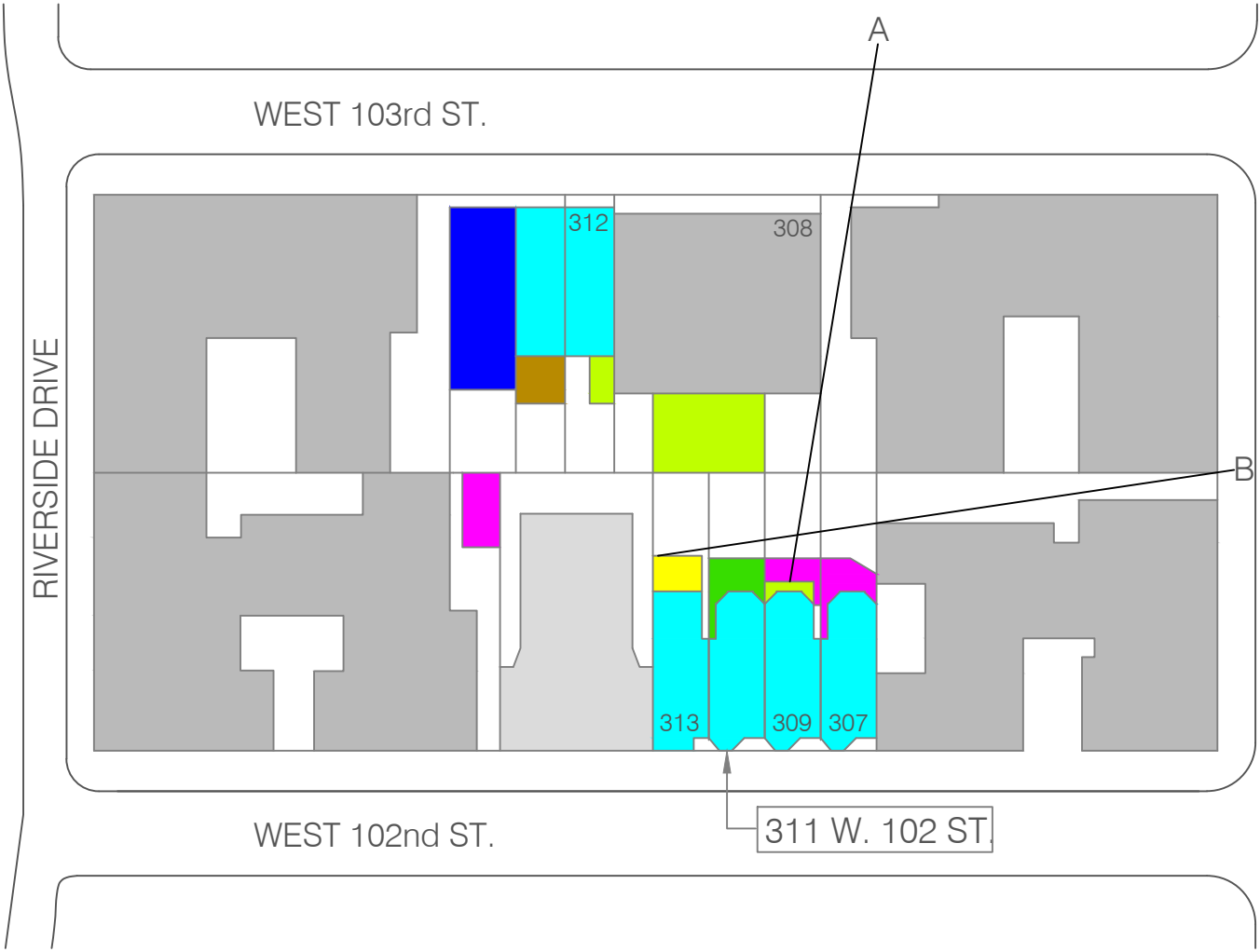
IS PART OF A BLOCK WITH OTHER EXISITNG REAR  
EXTENSIONS AND DECKS

309 W 102 HAS A 2 SORY + 1 STORY EXTENSION

307 W 102 HAS A 1 STORY EXTENSION

312 W 103 HAS A 2 STORY EXTENSION

308 W 103 HAS A 2 STORY EXTENSION



311 WEST 102nd ST.

NEW YORK, NY 10025

RIVERSIDE - WEST END  
HISTORIC DISTRICT

OCTOBER 14, 2021

BLOCK DIAGRAM

N.T.S.



SIGHT LINE "A" FROM BLOCK DIAGRAM



SIGHT LINE "B" FROM BLOCK DIAGRAM

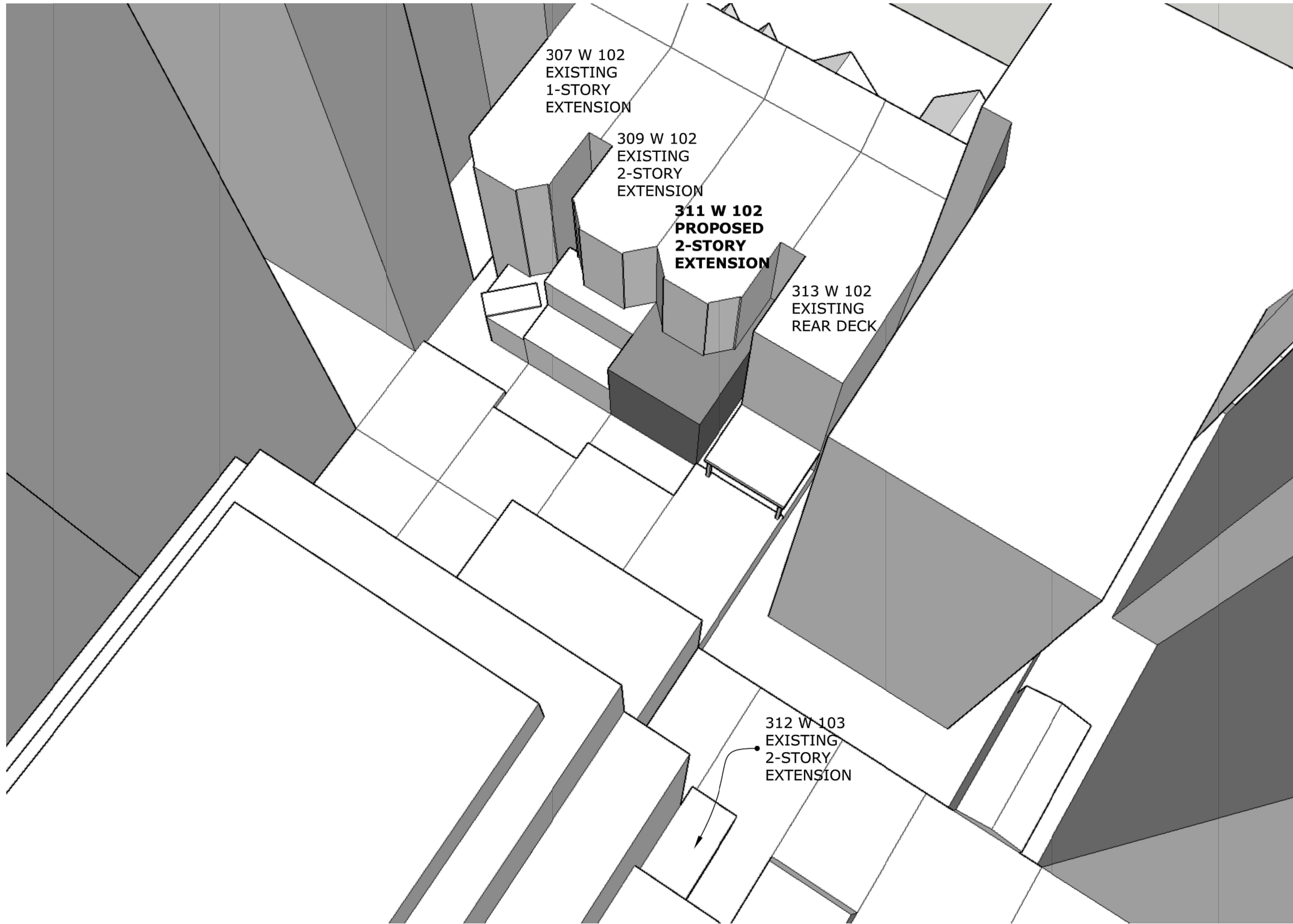
311 WEST 102nd ST.  
NEW YORK, NY 10025

RIVERSIDE - WEST END  
HISTORIC DISTRICT

OCTOBER 14, 2021

MATERIALS BOARD

03.1



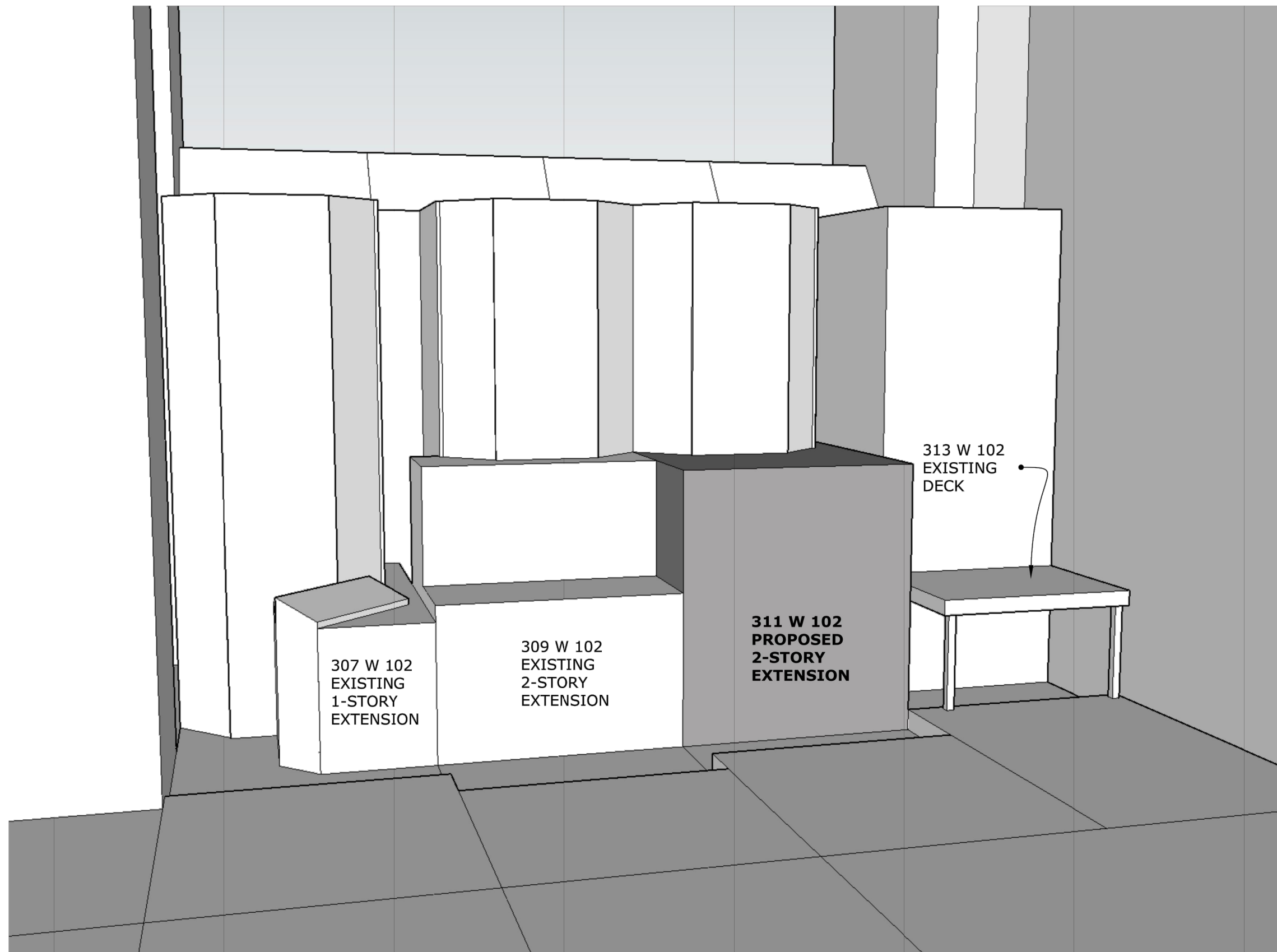
311 WEST 102nd ST.  
NEW YORK, NY 10025

RIVERSIDE - WEST END  
HISTORIC DISTRICT

OCTOBER 14, 2021

BLOCK DIAGRAM  
MODEL  
FROM ABOVE

04



311 WEST 102nd ST.  
NEW YORK, NY 10025

RIVERSIDE - WEST END  
HISTORIC DISTRICT

OCTOBER 14, 2021

BLOCK DIAGRAM  
MODEL  
REAR ELEVATION

05





311 WEST 102nd ST.  
NEW YORK, NY 10025

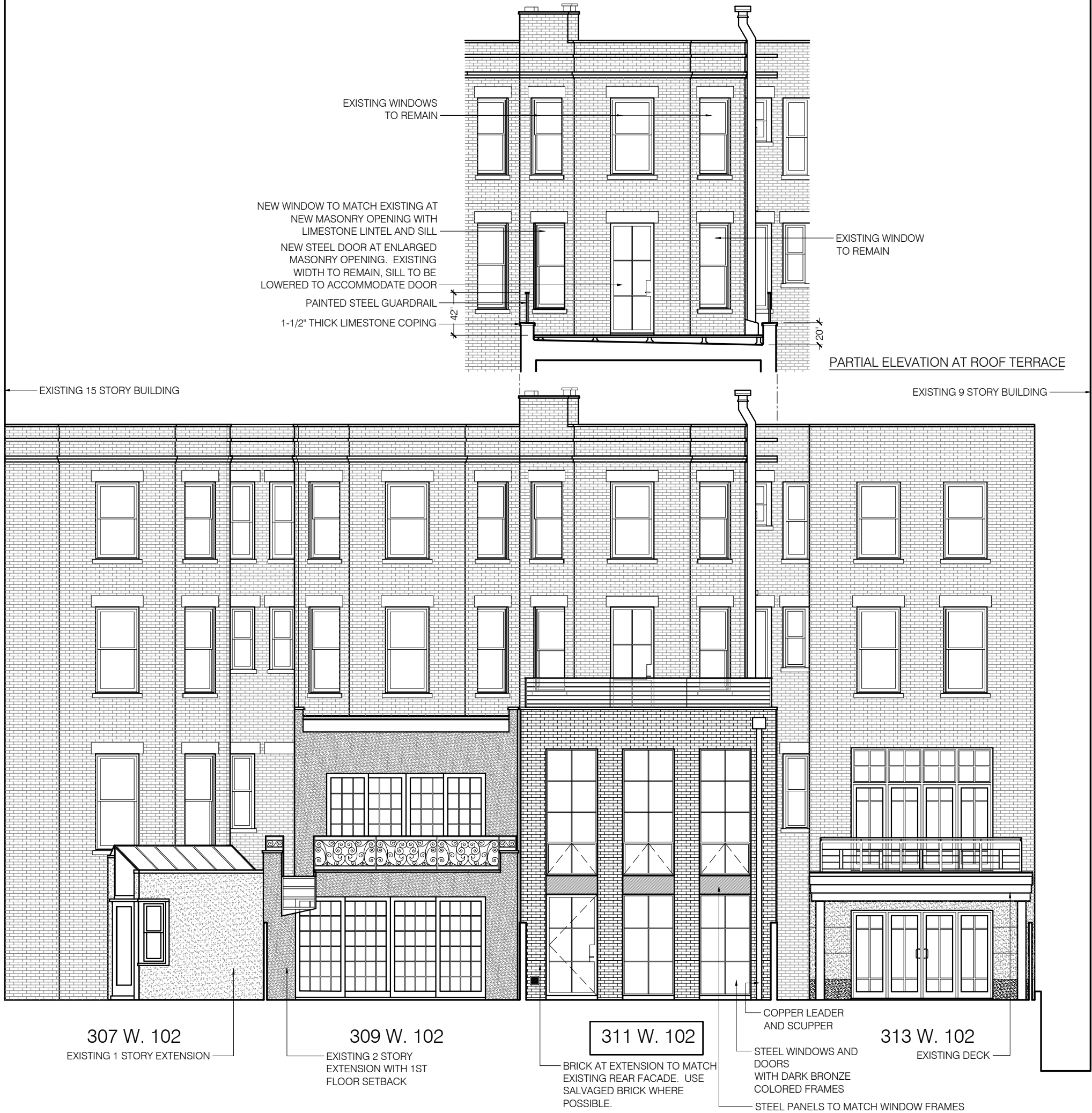
RIVERSIDE - WEST END  
HISTORIC DISTRICT

OCTOBER 14, 2021

EXISTING REAR  
ELEVATION

1/8" = 1'-0"

06



311 WEST 102nd ST.  
NEW YORK, NY 10025

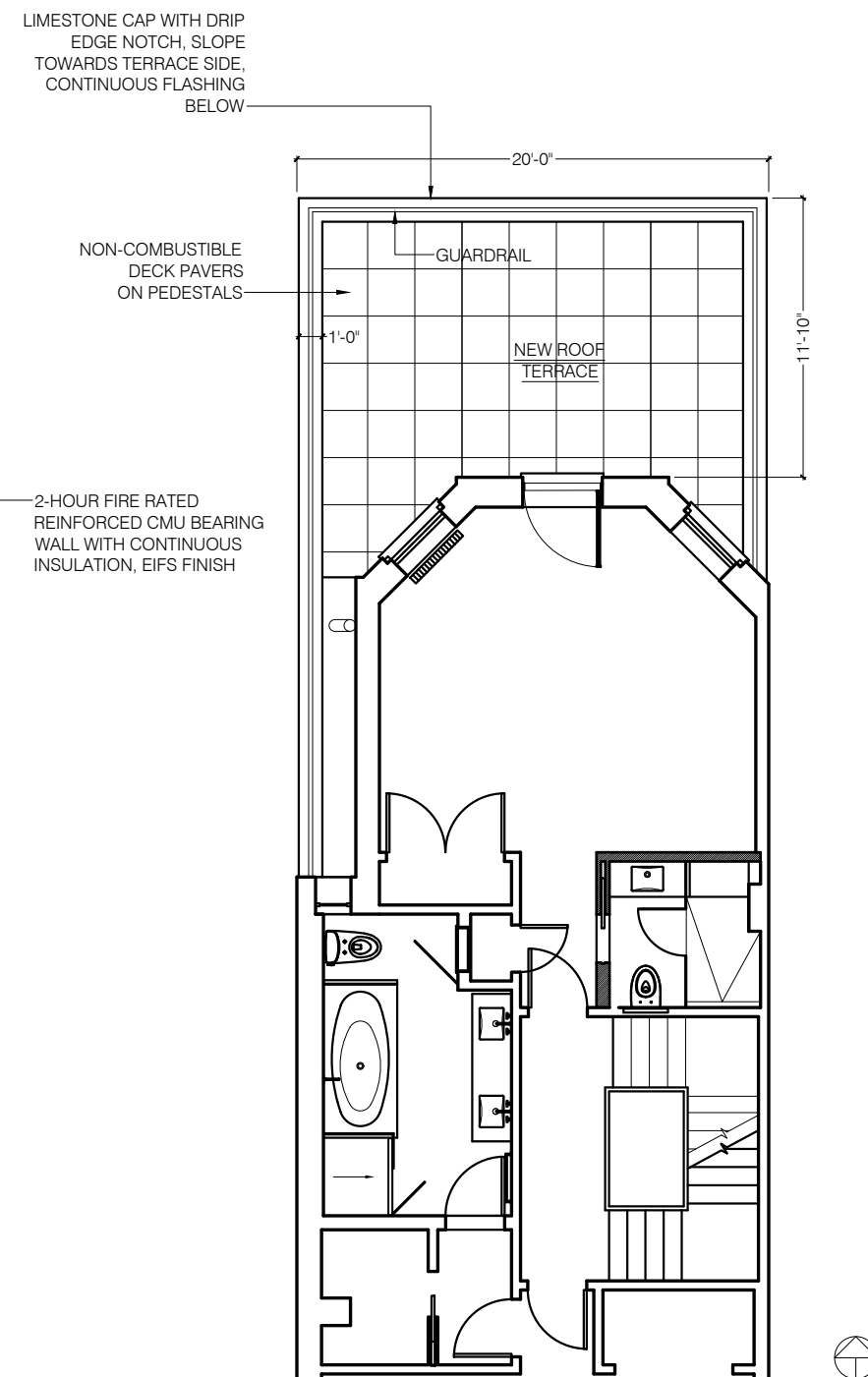
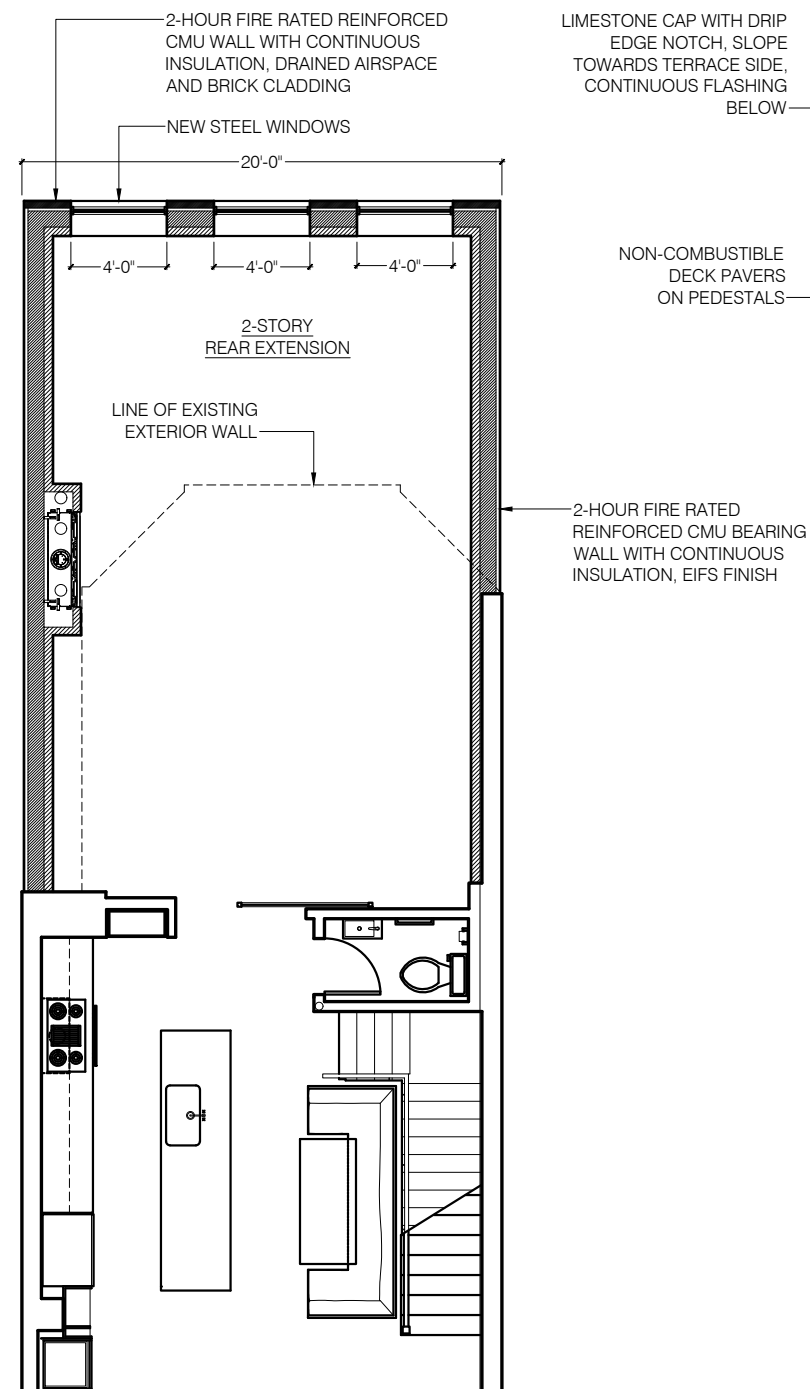
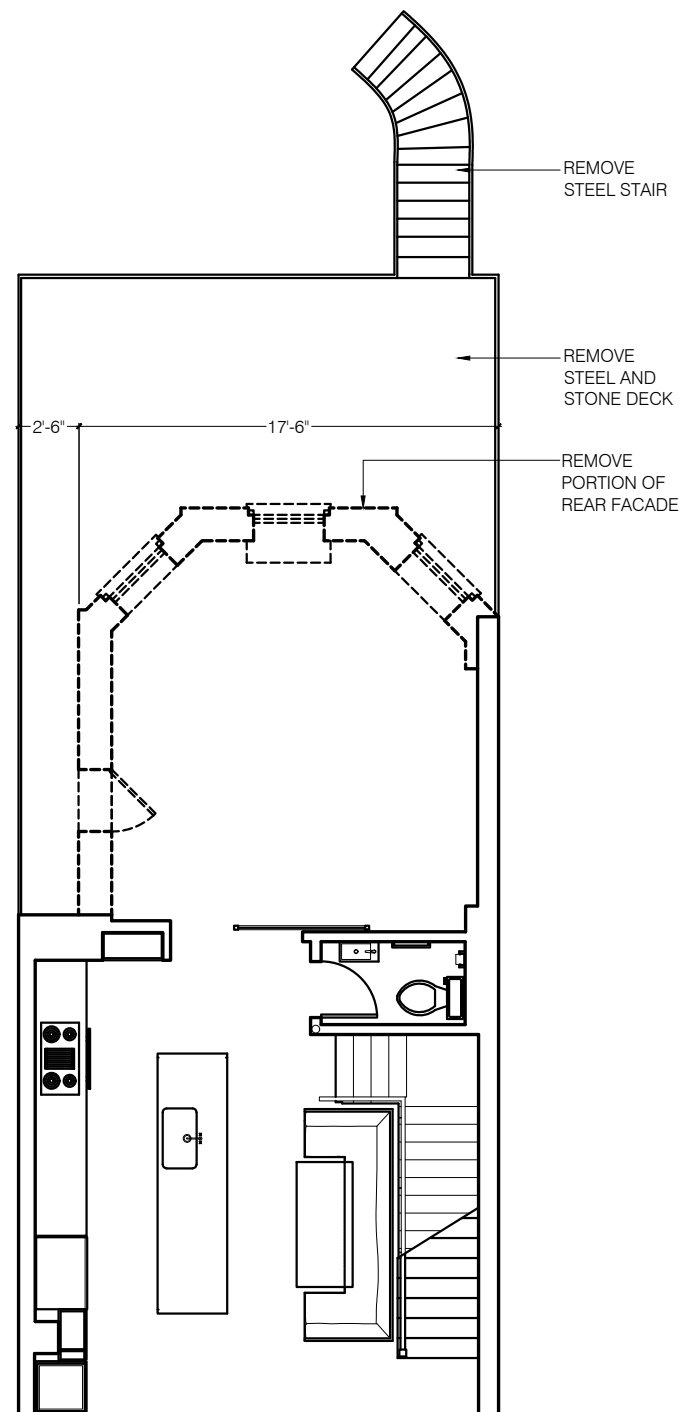
RIVERSIDE - WEST END  
HISTORIC DISTRICT

OCTOBER 14, 2021

PROPOSED REAR  
ELEVATION

1/8" = 1'-0"





311 WEST 102nd ST.  
NEW YORK, NY 10025

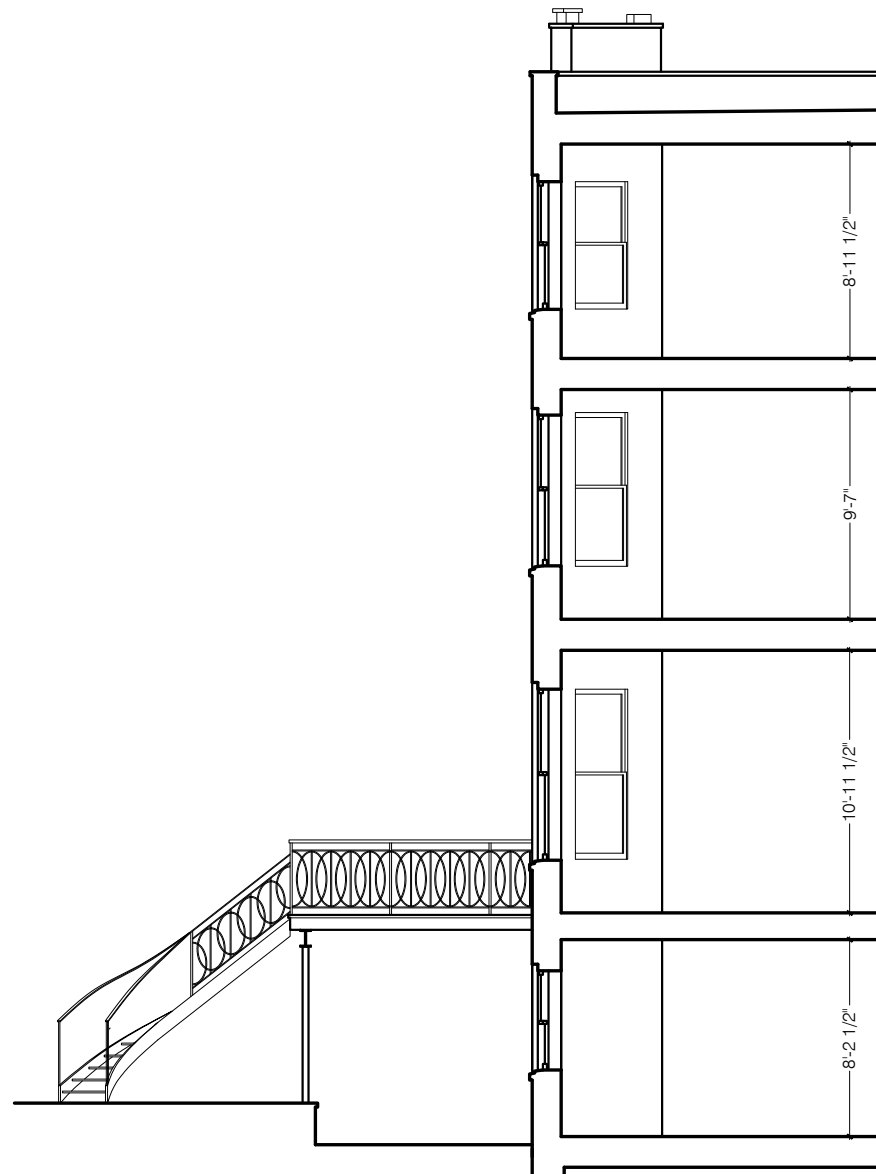
RIVERSIDE - WEST END  
HISTORIC DISTRICT

OCTOBER 14, 2021

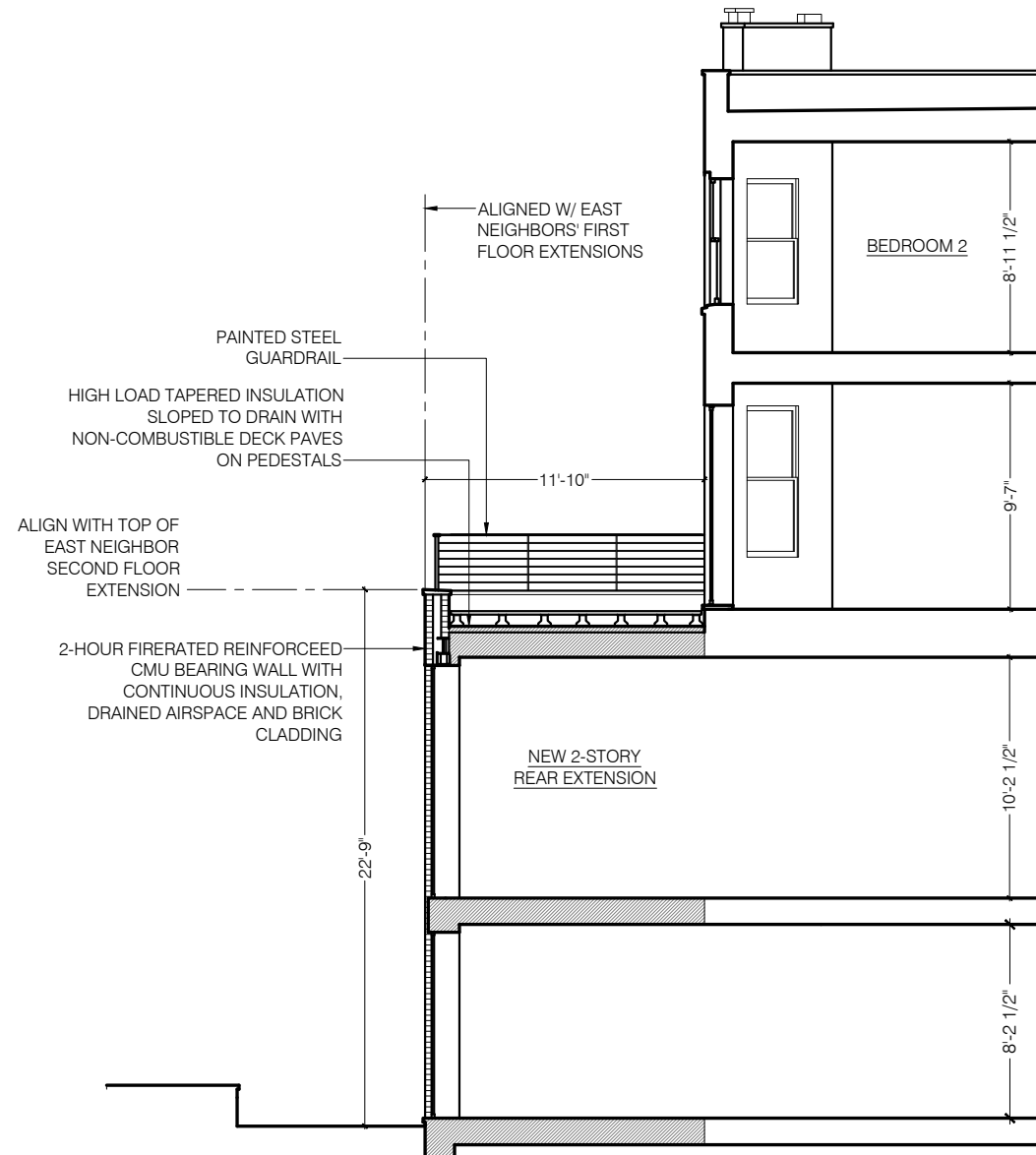
EXISTING AND  
PROPOSED PLANS

1/8" = 1'-0"

08



EXISTING SECTION



PROPOSED SECTION

311 WEST 102nd ST.  
NEW YORK, NY 10025

RIVERSIDE - WEST END  
HISTORIC DISTRICT

OCTOBER 14, 2021

EXISTING AND  
PROPOSED  
SECTIONS

1/8" = 1'-0"

09

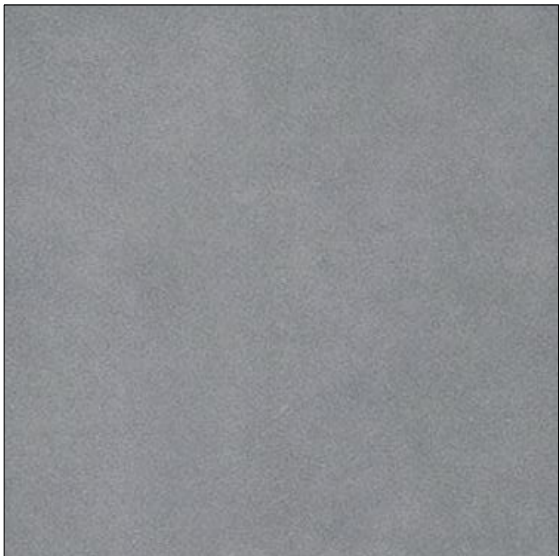




EXTERIOR BRICK



LIMESTONE COPING



ROOF TERRACE PAVER



SIDE WALL FINISH



STEEL FRAME  
WINDOW



STEEL FRAME  
DOOR

311 WEST 102nd ST.  
NEW YORK, NY 10025  
RIVERSIDE - WEST END  
HISTORIC DISTRICT  
OCTOBER 14, 2021

MATERIALS BOARD