

## 392 Columbus Avenue: Proposed Ground Floor Alterations and Signage



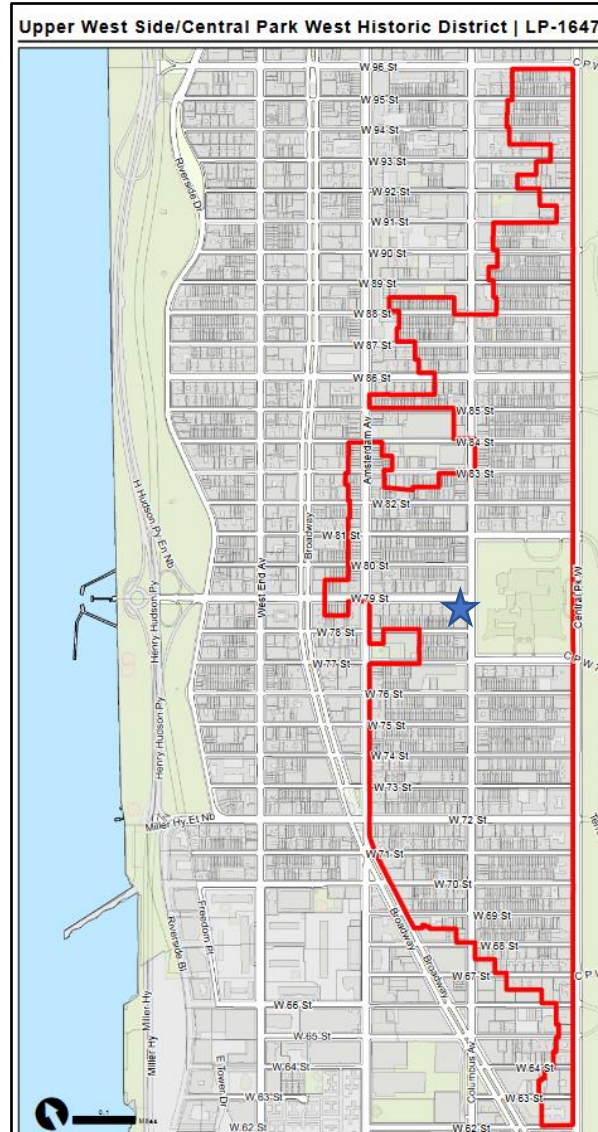
2017, prior to sidewalk shed installation.



Proposed condition rendering.



# 392 Columbus Avenue: Location



## 392 Columbus Avenue: Existing Conditions



Ground floor façade, looking northwest toward West 79<sup>th</sup> Street.



## 392 Columbus Avenue: Existing Conditions



Ground floor façade, looking southwest from the corner of West 79<sup>th</sup> Street.



Ground floor façade at West 79<sup>th</sup> Street elevation.



## 392 Columbus Avenue: Historic Photos



1940's tax photo. (NYC Municipal Archive)



1980's tax photo. (NYC Municipal Archive)



1988 designation photo. (NYC LPC)

392 Columbus Avenue:  
Ground Floor Evolution



1940's tax photo, cropped. (NYC Municipal Archive)



1980's tax photo, cropped. (NYC Municipal Archive)

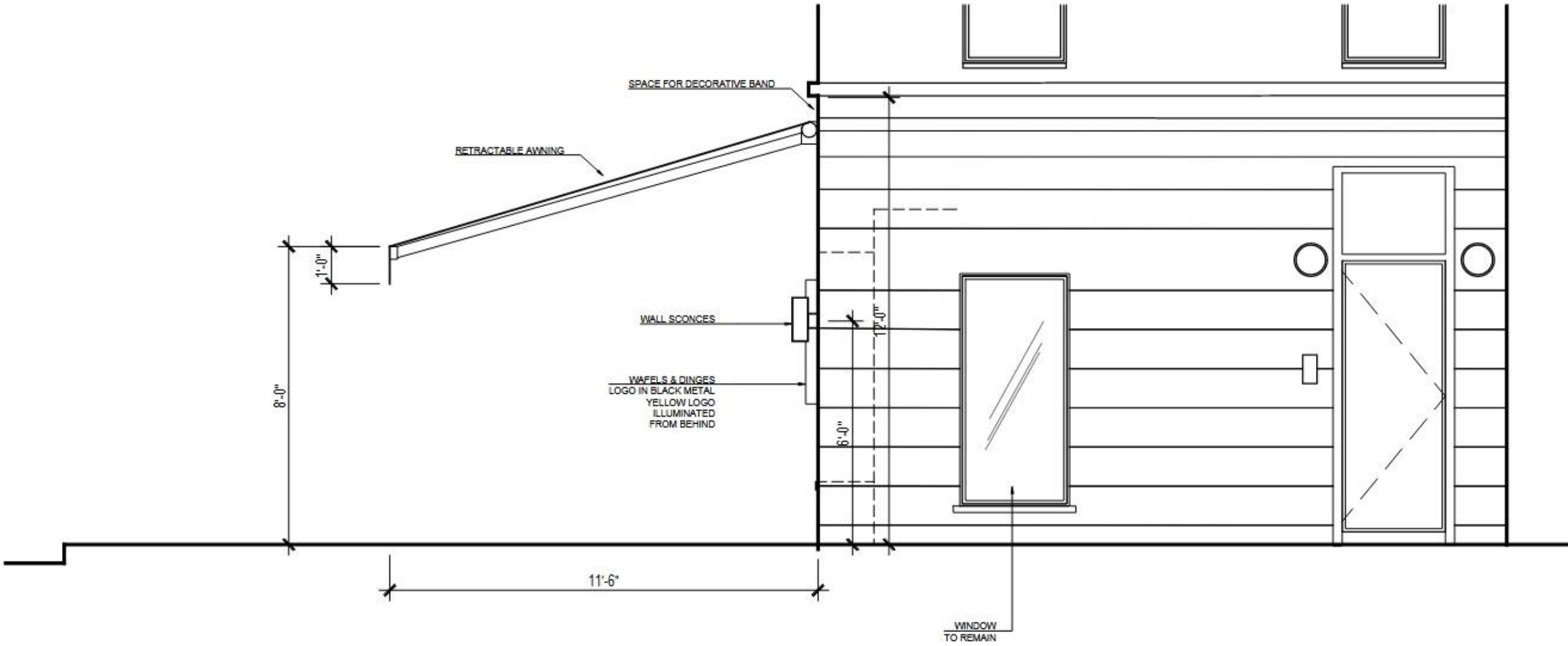


1988 designation photo, cropped. (NYC LPC)

392 Columbus Avenue:  
Existing North Elevation

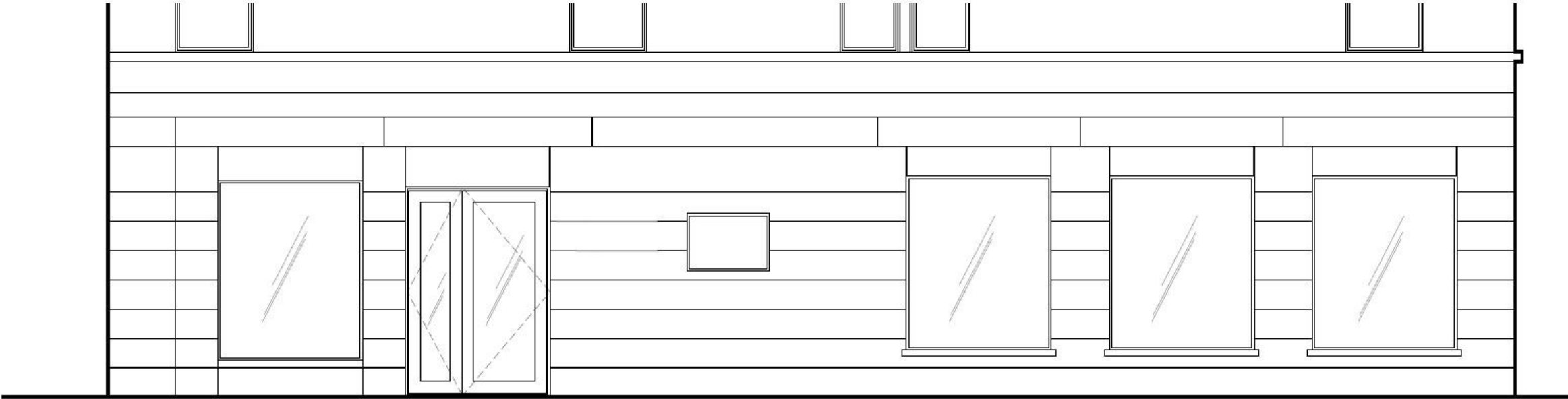


392 Columbus Avenue:  
Proposed North Elevation





392 Columbus Avenue:  
Existing East Elevation



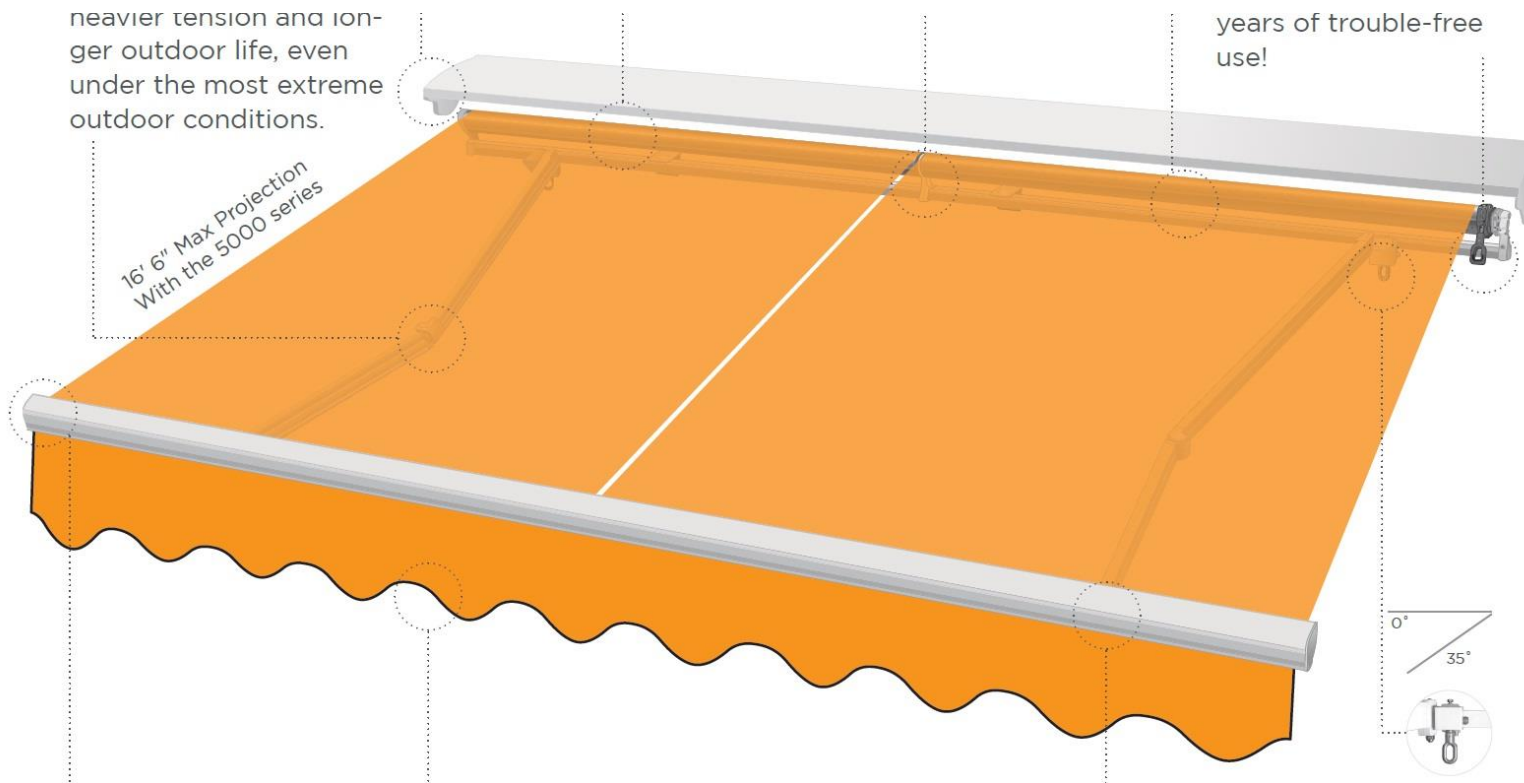
[illegible]



## 392 Columbus Avenue: Proposed Alterations



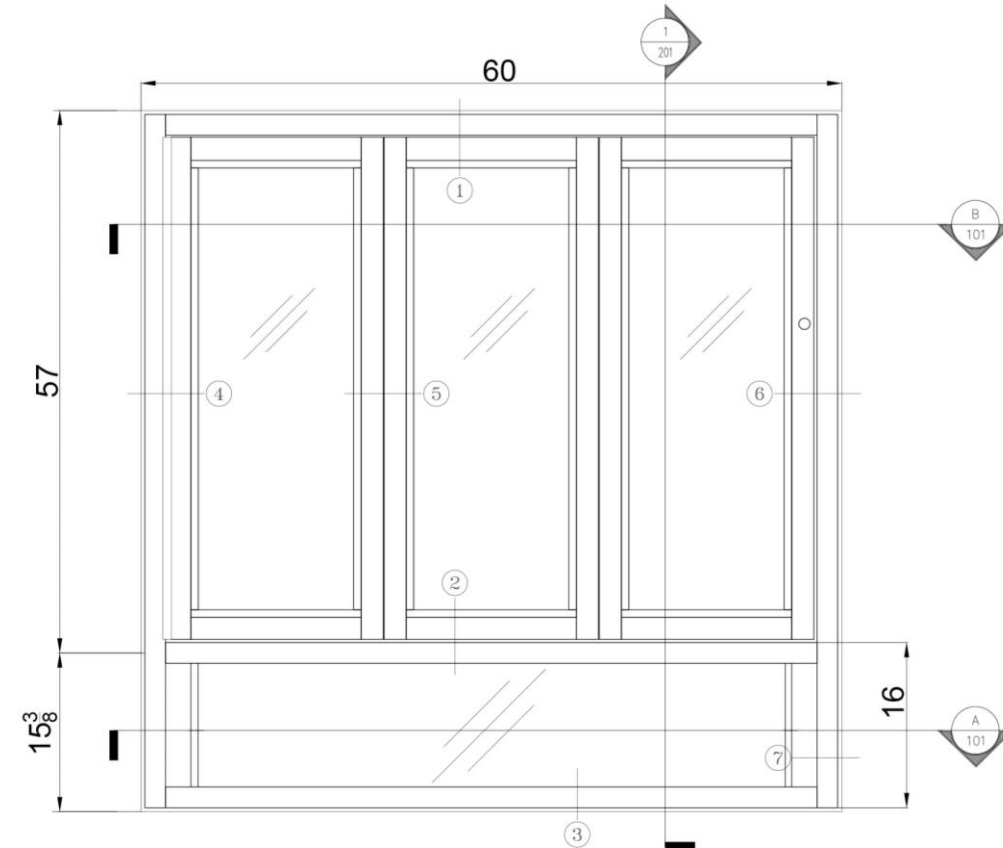
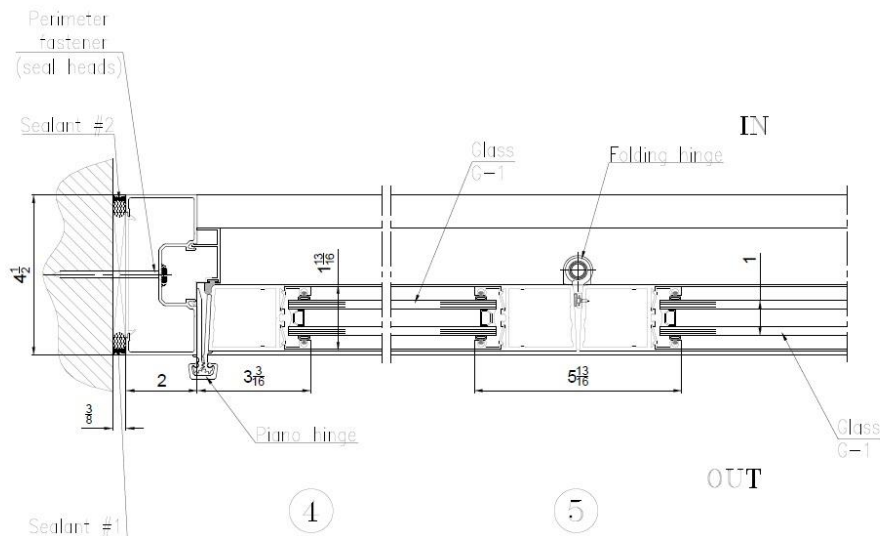
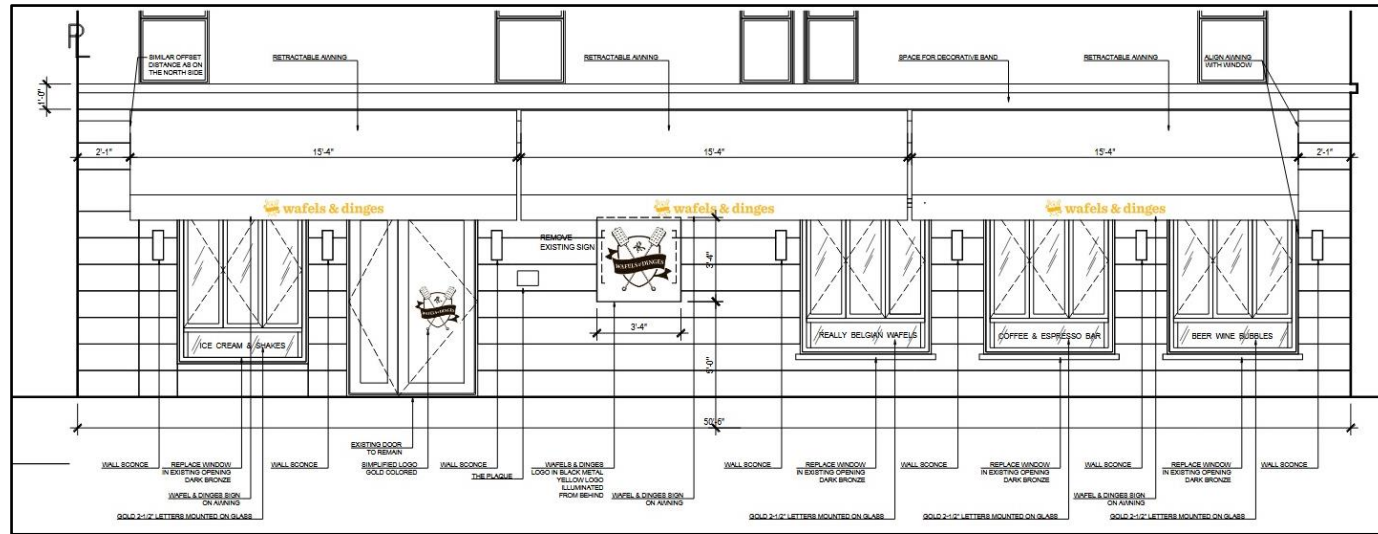
## 392 Columbus Avenue: Proposed Awning & Light Fixture



Length: 6 in  
Extends: 8-15/16 in  
Height: 18 in

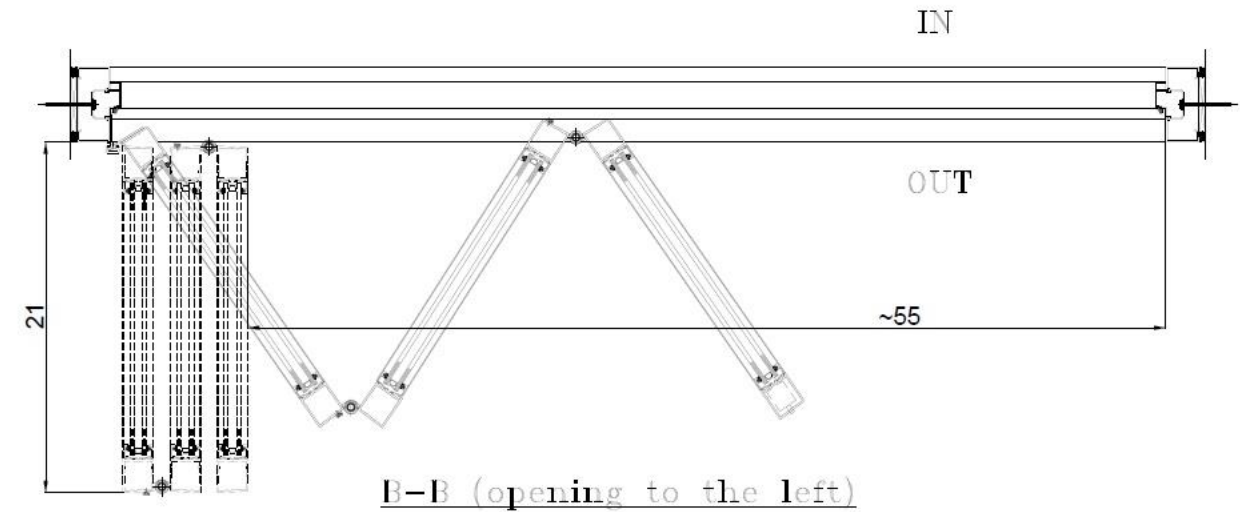
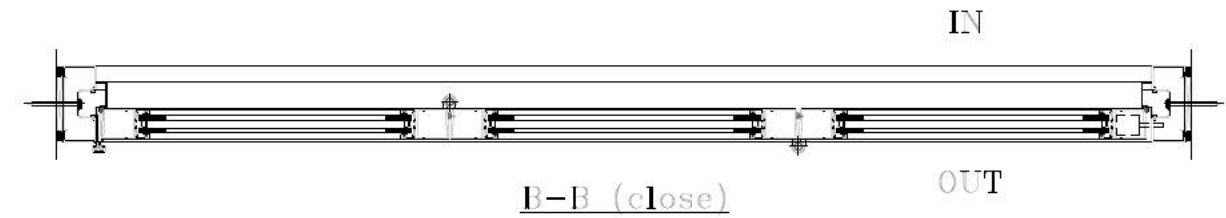
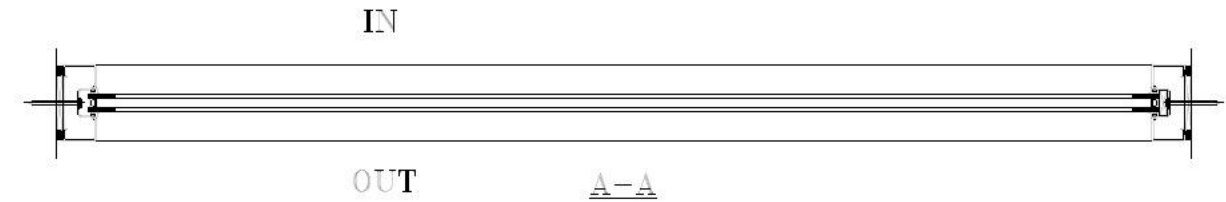
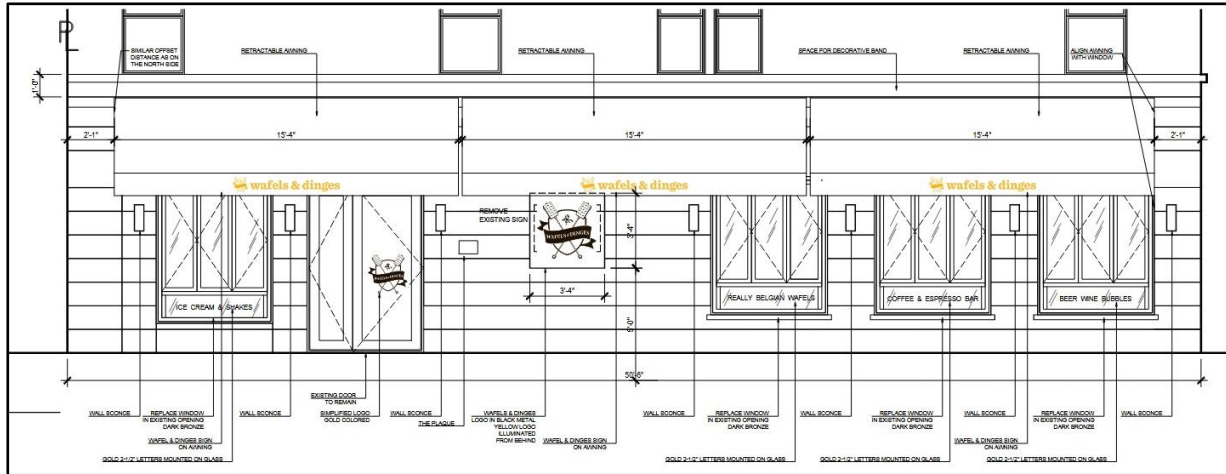


# 392 Columbus Avenue: Proposed Window Details



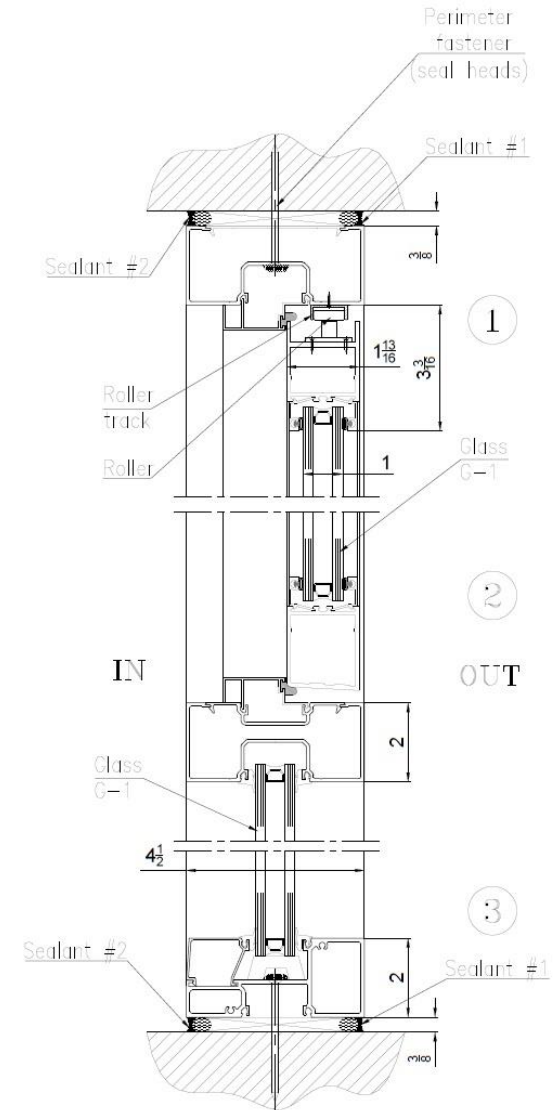
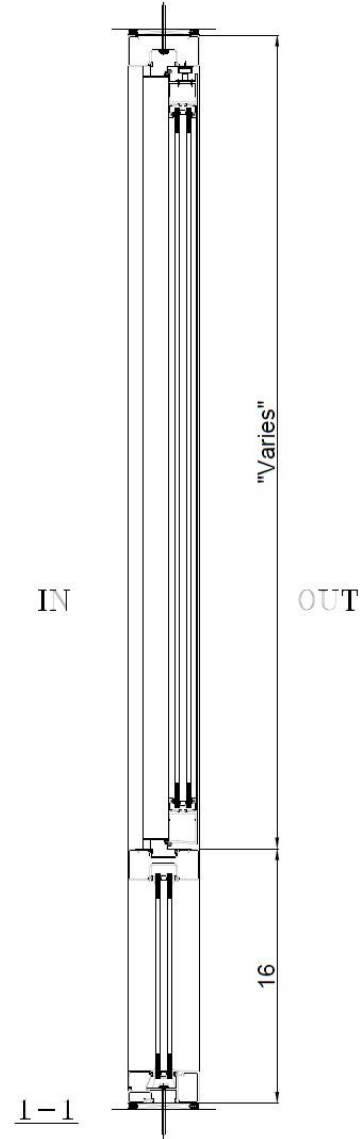
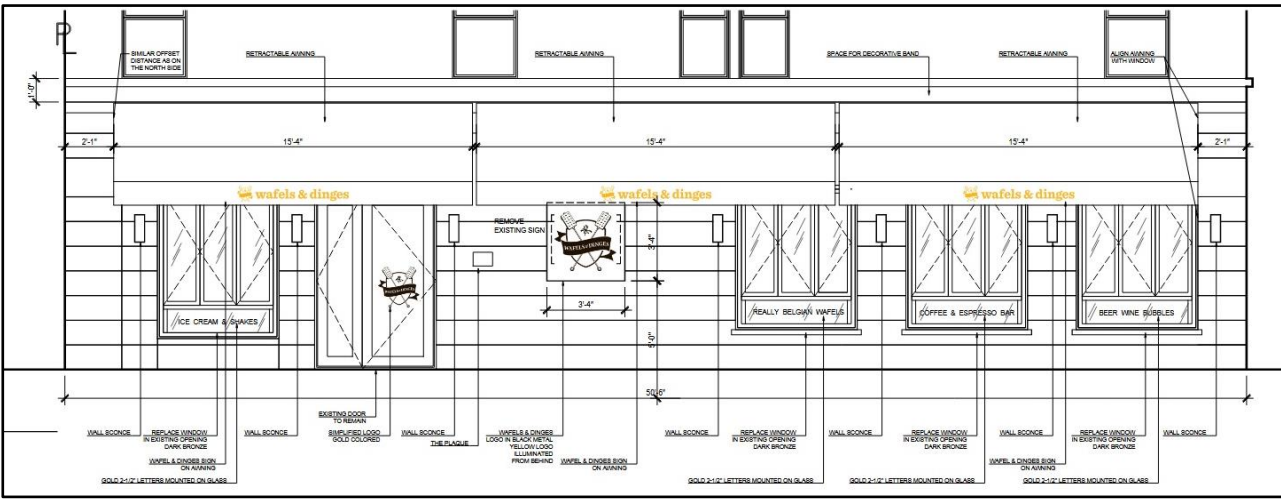
2 windows opening to the left;  
2 windows opening to the right

# 392 Columbus Avenue: Proposed Window Details

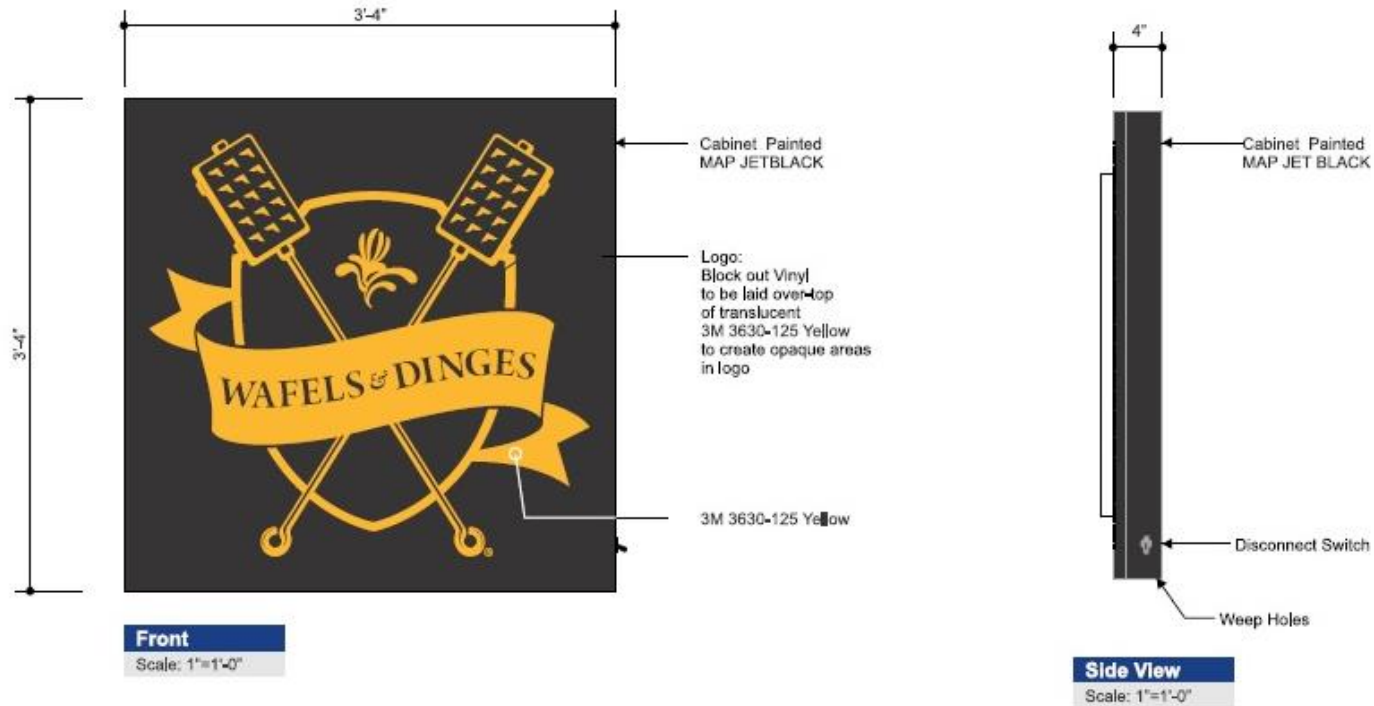




## 392 Columbus Avenue: Proposed Window Details



## 392 Columbus Avenue: Proposed LED Lighted Cabinet with Partially Opaque Face

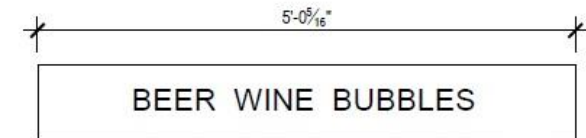
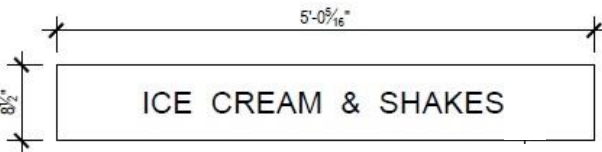
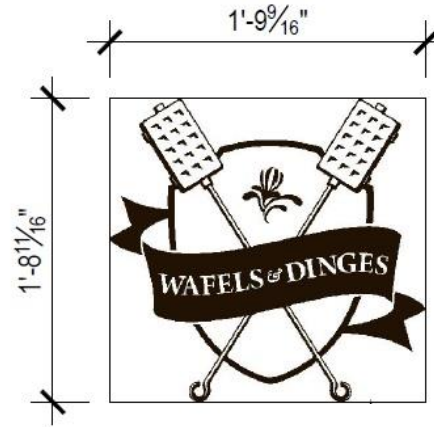


Color Specifications	
	PMS 109 C - RGB 253/209/39 CMYK 1/16/100/0
	RGB R:241 G:236 B:225 CMYK C:0 M:0 Y:5 K:0
	PMS Black C - RGB 0/0/0 CMYK 75/68/75/90

Vinyl/Paint Specifications	
	3M 3630-125 Yellow RAL 1003
	RAL 9010 Pure White
	Black (Semi-Gloss)
All paint finishes to be Satin unless otherwise specified	

General Specifications	
Face:	.125" Routed Alum w/ Push thru Copy Graphics
Graphic:	1" Clear Acrylic with 2nd surface Diffuser (See Call Outs)
Cabinet:	.080" Break form Aluminum Cabinet MAP Jet Black Painted Semi Gloss Finish, Interior Painted White
Light:	AMBER LEDs as required - Self Contained Power Supplies
Wall Type:	TBD
Electrical:	Actual # of Circuits to be Determined by Licensed Electrical Contractor, (1) 20 AMP Circuit, 120 Volts
Quantity:	One (1)

**392 Columbus Avenue:  
Proposed Vinyl Signs on Windows and Door**





## 392 Columbus Avenue: Proposed Ground Floor Alteration



## Appendix

# 392 Columbus Avenue: Floor Plan

