



Parks

# Riverside Park Dinosaur Playground Reconstruction

Located at Riverside Park, along Riverside Drive,  
between W 96th and W 98th Streets in the Borough of Manhattan

Landmarks Preservation Commission Review

February 13, 2024

Stephen Whitehouse, Starr Whitehouse

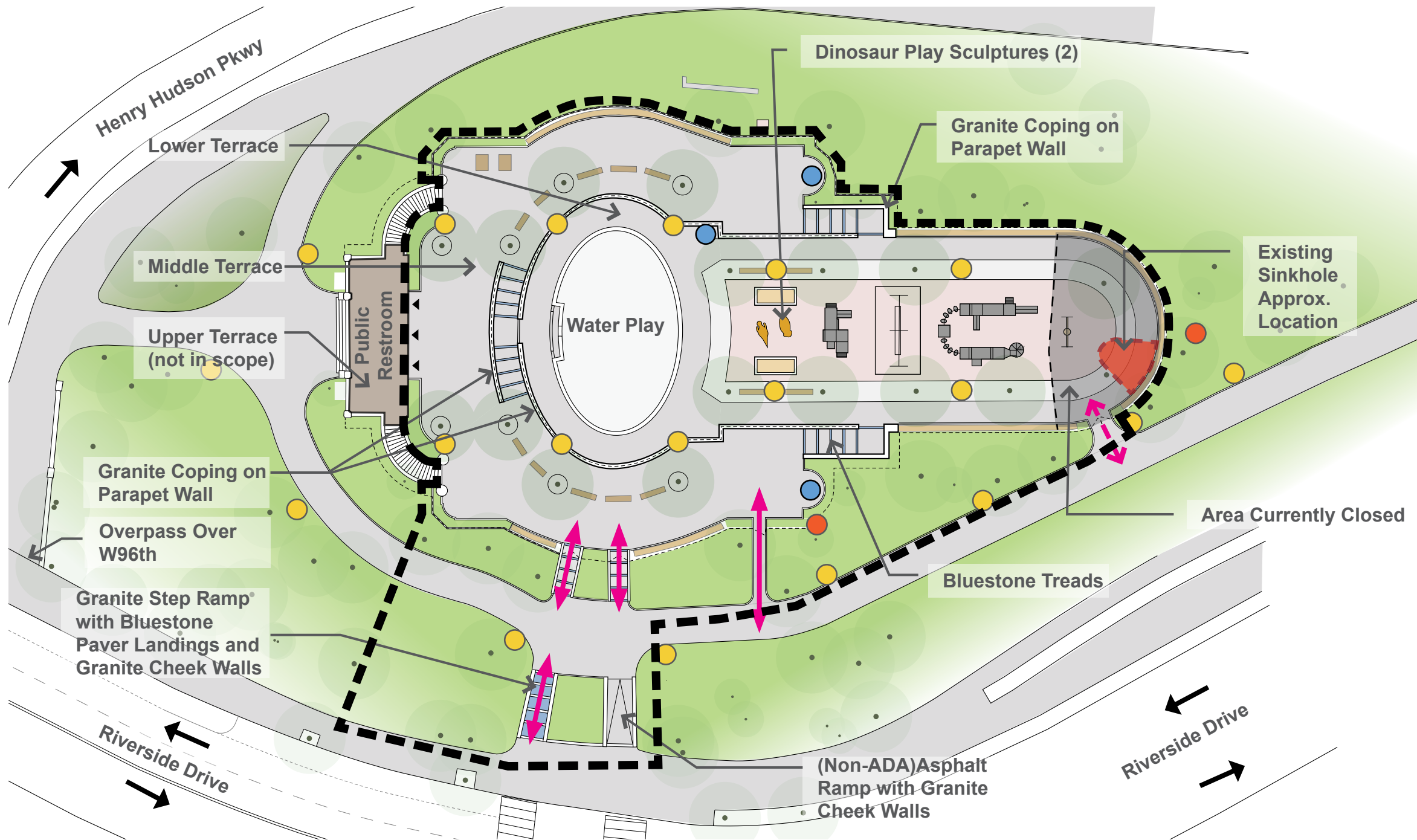
**Total Budget:** \$8.66m

Mayor, Eric Adams - \$ 1.0m FY22

City Council District 6, Gale Brewer - \$5.9m FY23

FEMA - \$1.76m FY22-23

**Project Size:** 1.28 ac



## Legend

- Project Limit
- ↔ Park Entrance
- Existing Fence / Railing
- Safety Surface
- Building or Structure
- Asphalt Pavement
- Concrete Pavement
- Bluestone Pavers or Treads
- Tree
- Parks Lightpole
- Parks Sports Lightpole
- Drinking Fountain
- ← Traffic

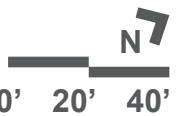


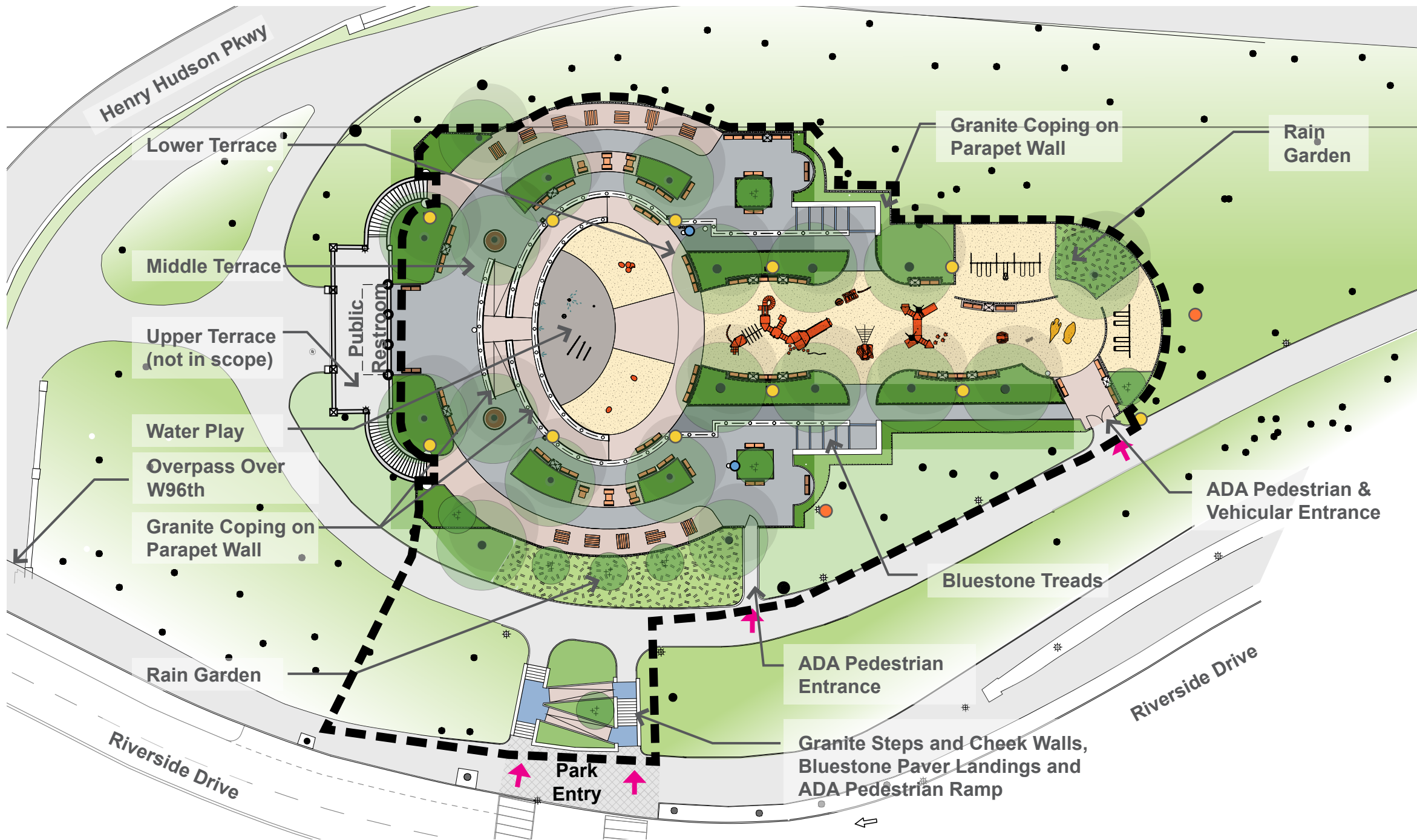
NYC Parks



**STARR WHITEHOUSE**  
Landscape Architects  
and Planners PLLC

## Dinosaur Playground | Existing Conditions

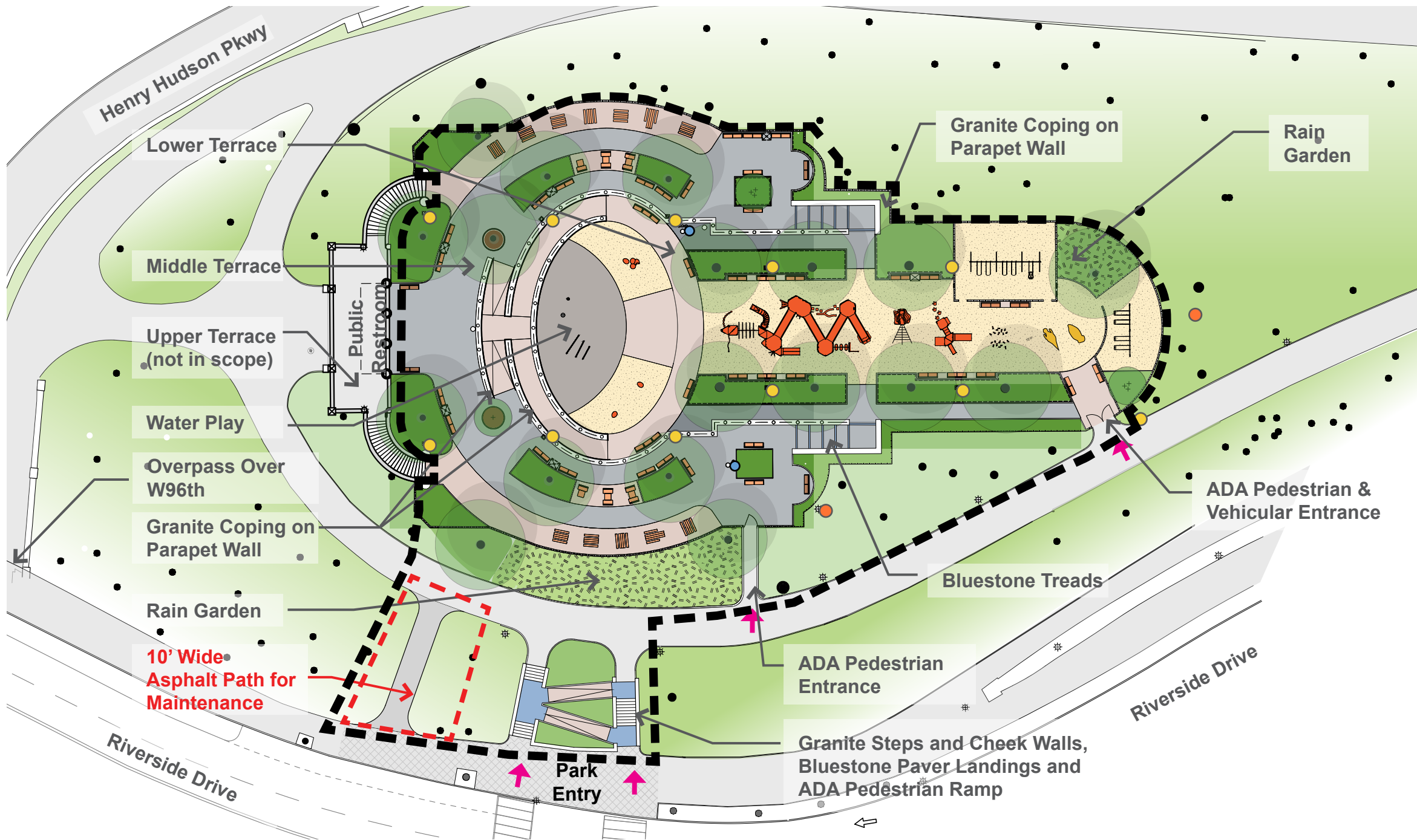




# Legend

- Project Limit
- ← Park Entrance
- Existing Tree
- ⊕ Proposed Tree
- Existing Asphalt Pavement
- Asphalt Pavement
- Concrete Pavement
- Colored Concrete
- Asphalt Block Hex Pavers
- Bluestone Pavers or Treads
- Safety Surface
- Planted Beds
- Rain Garden
- Parks Security Lighting
- Parks Sports Lighting
- Drinking Fountain or Bottle Filler

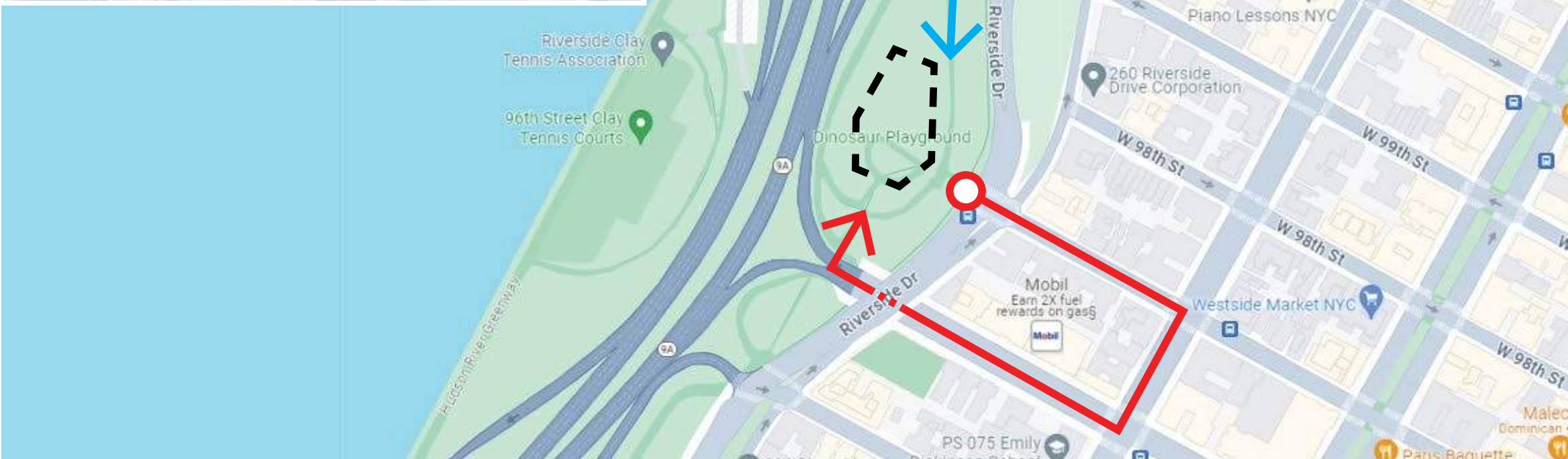




## Legend

- Project Limit
- Park Entrance
- Existing Tree
- Proposed Tree
- Existing Asphalt Pavement
- Asphalt Pavement
- Concrete Pavement
- Colored Concrete
- Asphalt Block Hex Pavers
- Bluestone Pavers or Treads
- Safety Surface
- Planted Beds
- Rain Garden
- Parks Security Lighting
- Parks Sports Lighting
- Drinking Fountain or Bottle Filler





## Legend

--- Project Limit

—○— Gator Route

—○— Vehicular Route

... Vehicular Route Under  
Riverside Dr Overpass  
at W 96th



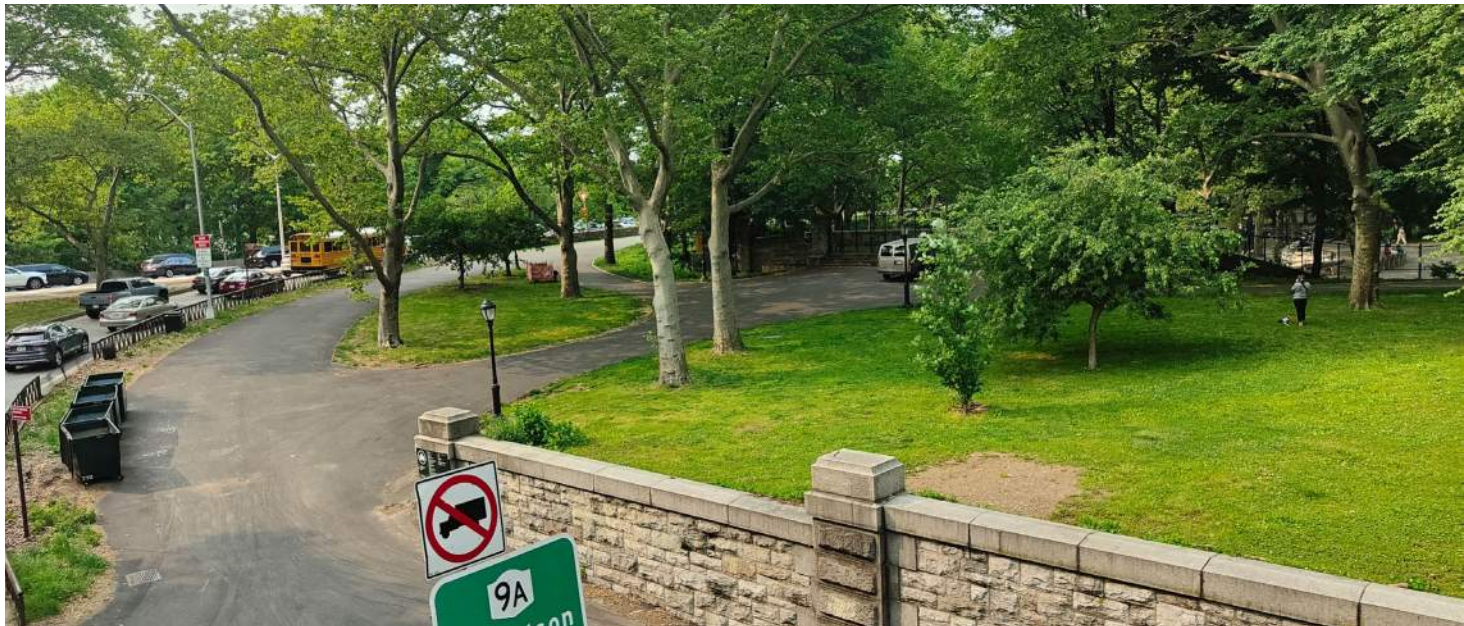
NYC Parks



**STARR WHITEHOUSE**  
Landscape Architects  
and Planners PLLC

## | Parks Vehicle Access Without Proposed Maintenance Path





1 - West Facing View from Above along Riverside Drive



2 - East Facing View from Below on W96th Street



3 - View of Ramp Entrance between W102nd and W103rd Streets



4 - South Facing View of Ramp





1 - Full West Facing View towards Park from Riverside Dr

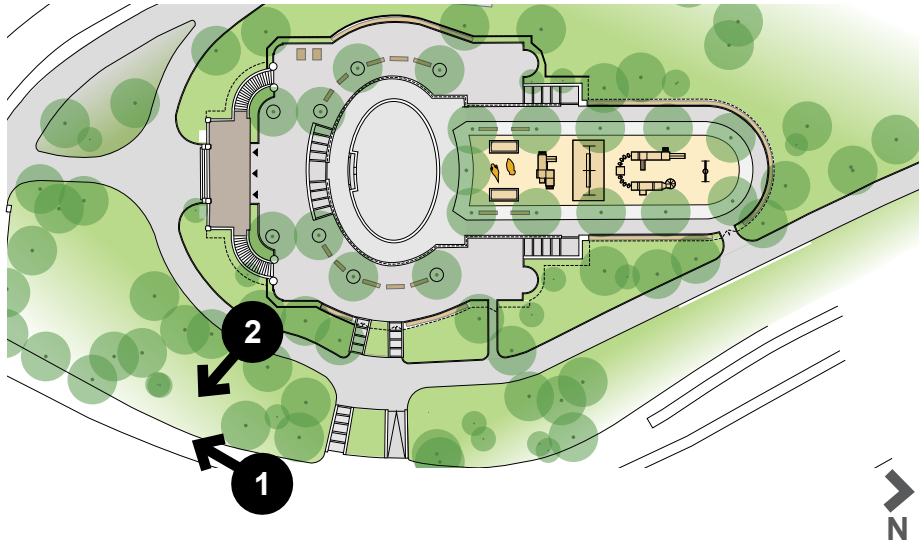




1 - View from Riverside Dr West toward the Playground



2 - View from Playground towards Riverside Dr West

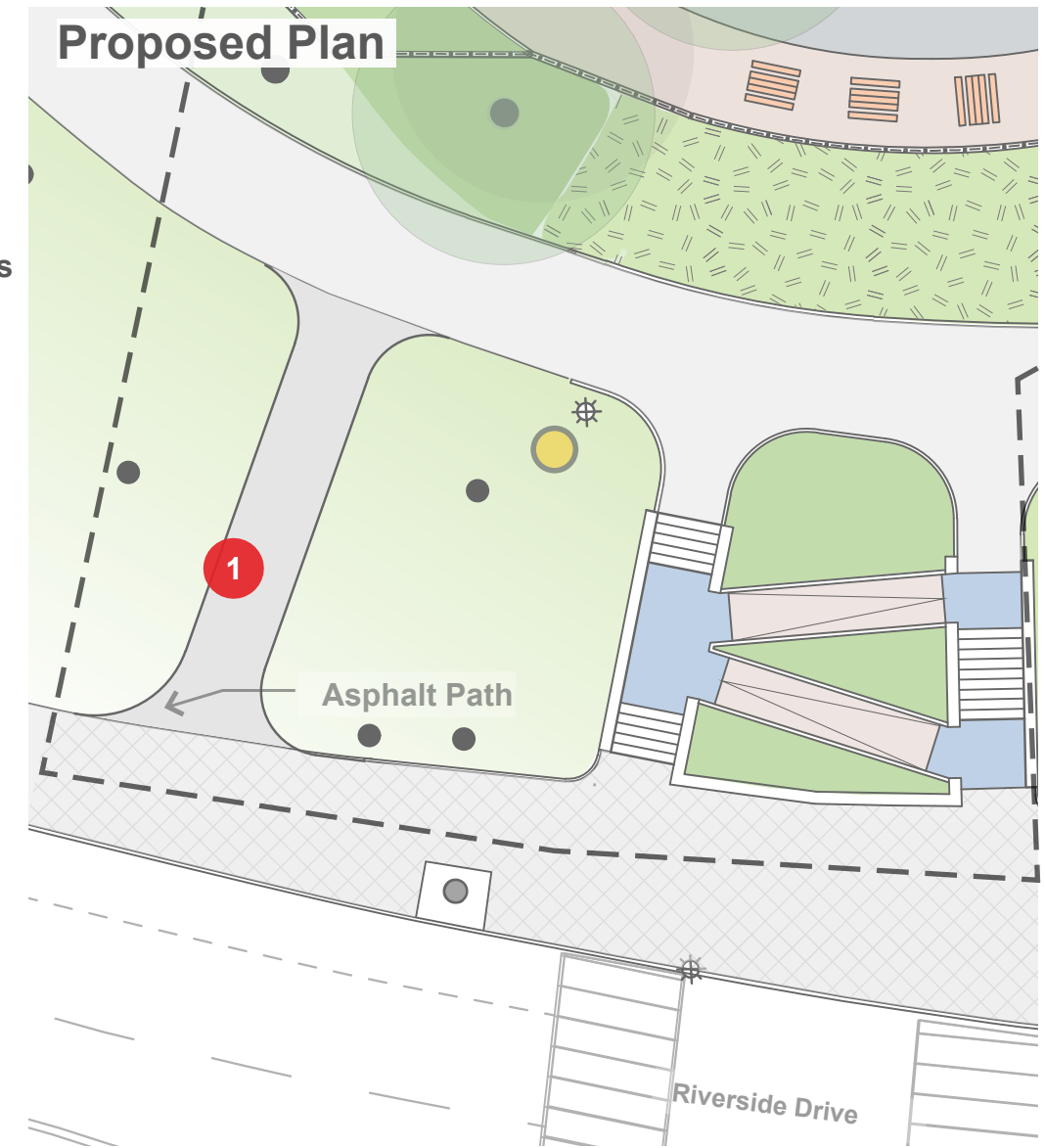


1 Lawn, shrubs, and trees with no path



1 New 10' Wide Asphalt Path for Maintenance and Emergency Vehicle Access

New Asphalt Hex Pavers at Entry



**Legend**

--- Project Limit

# Area of Focus

← Park Entrance



Existing Tree

Proposed Tree



Existing Concrete



Existing Asphalt Pavement

Asphalt Pavement

Colored Concrete



Concrete Pavement

Asphalt Block Hex Pavers

Bluestone Pavers or Treads



Safety Surface

Planted Beds

Rain Garden



Parks Security Lighting

Parks Sports Lighting

Drinking Fountain or Bottle Filler

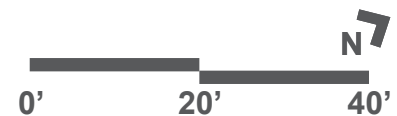


NYC Parks



STARR WHITEHOUSE  
Landscape Architects  
and Planners PLLC

## Dinosaur Playground | Enlargement Plans - Riverside Drive Entrance







NYC Parks



STARR WHITEHOUSE  
Landscape Architects  
and Planners PLLC

## Dinosaur Playground | Rendering





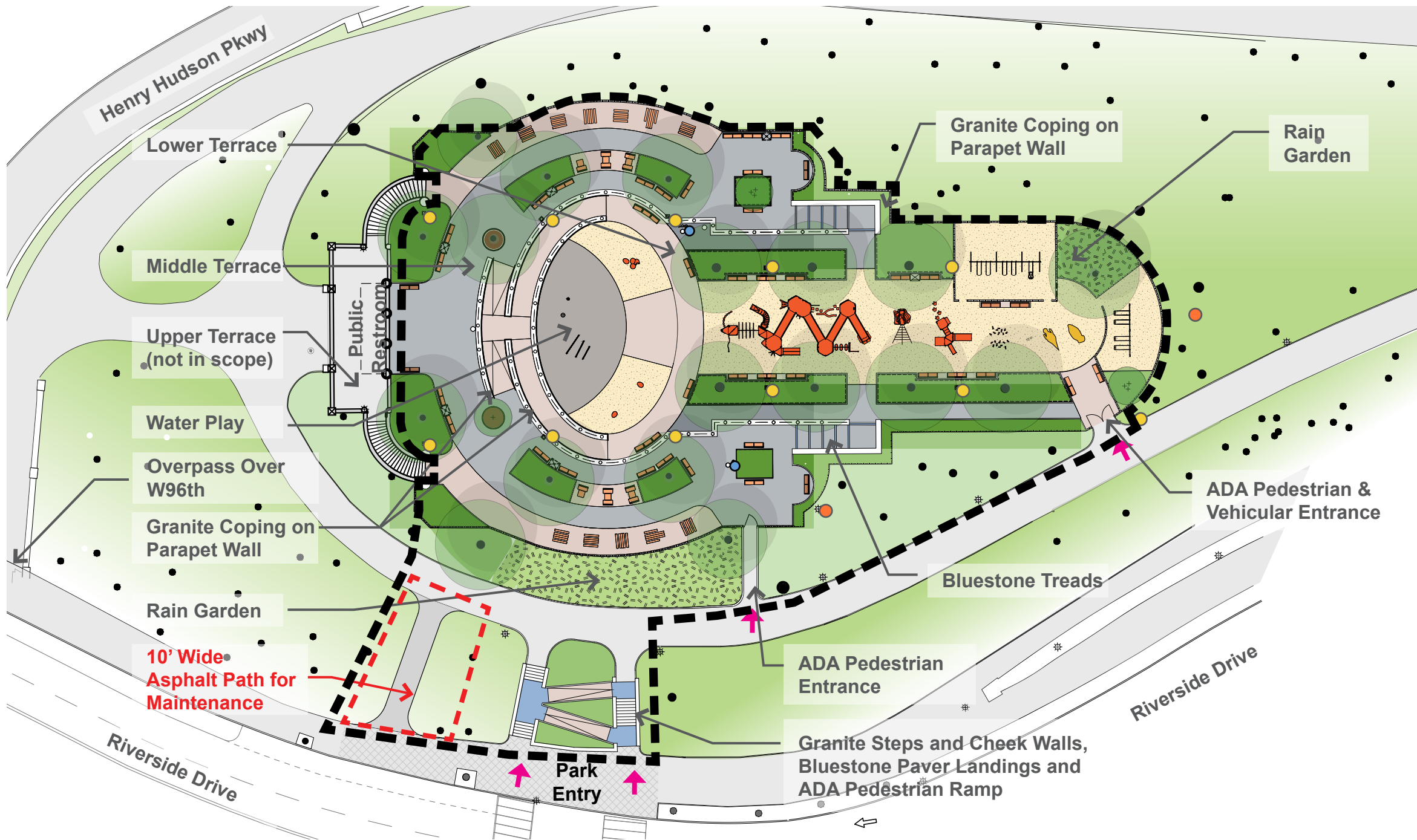
Asphalt Block Hex Pavers to match Existing at Riverside Drive



Asphalt Pavement



Steel Fence, 4ft high at Perimeter



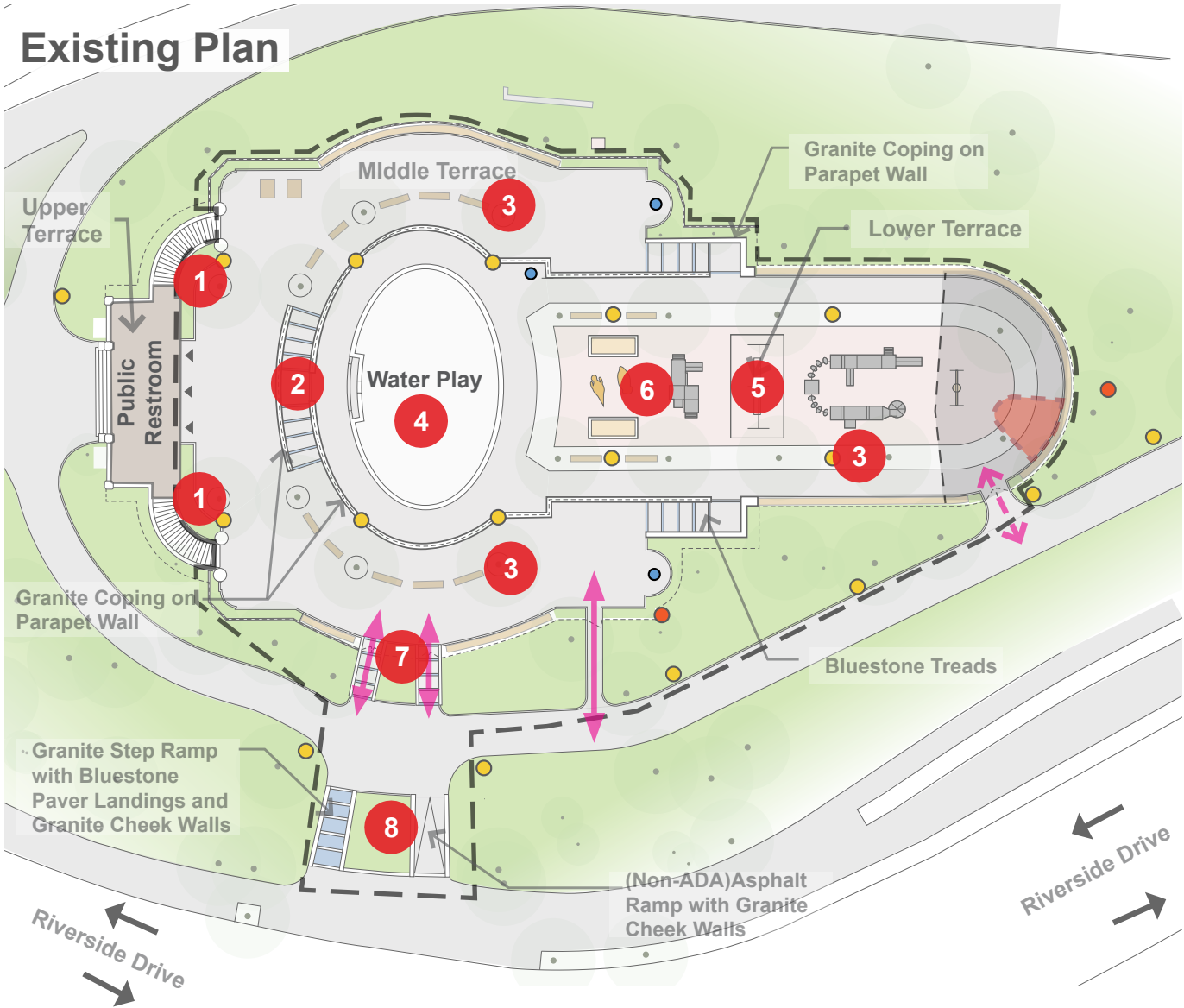
## Legend

- Project Limit
- Park Entrance
- Existing Tree
- Proposed Tree
- Existing Asphalt Pavement
- Asphalt Pavement
- Concrete Pavement
- Colored Concrete
- Asphalt Block Hex Pavers
- Bluestone Pavers or Treads
- Safety Surface
- Planted Beds
- Rain Garden
- Parks Security Lighting
- Parks Sports Lighting
- Drinking Fountain or Bottle Filler

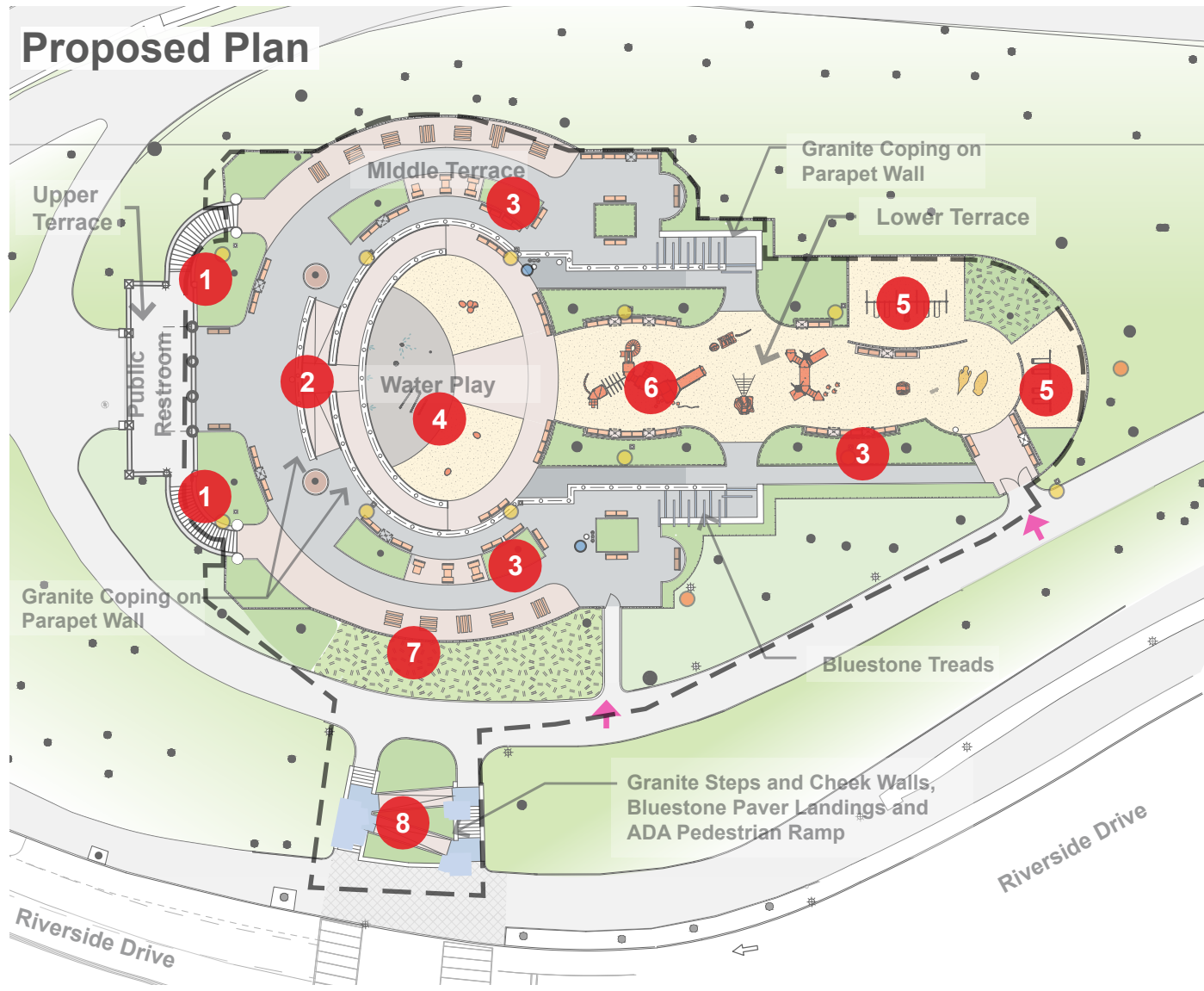
# APPENDIX



Existing Plan



Proposed Plan



**Legend**

- Project Limit
- # Area of Focus
- ← Park Entrance

- Existing Tree
- Proposed Tree
- Existing Concrete

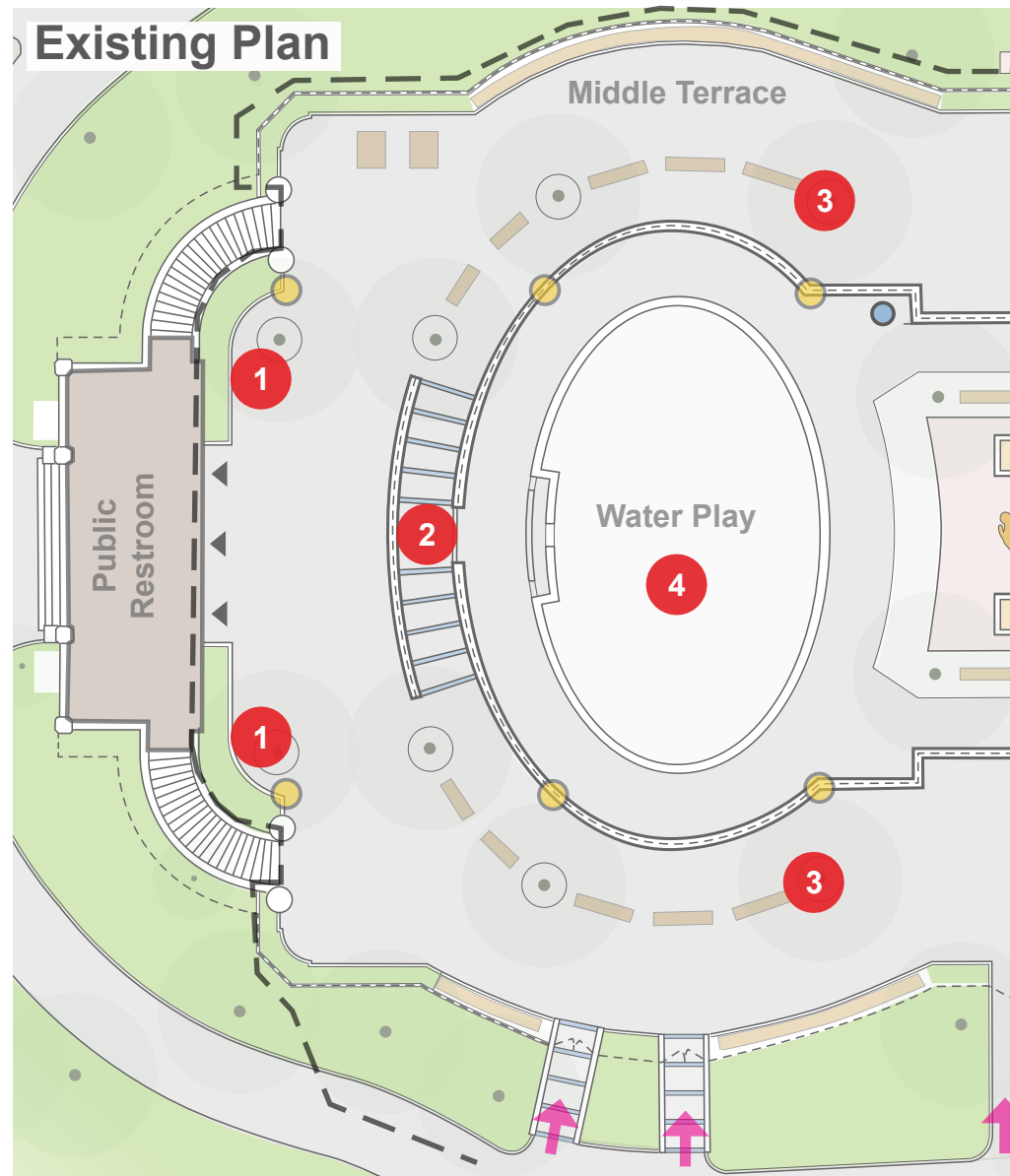
- Existing Asphalt Pavement
- Asphalt Pavement
- Colored Concrete

- Concrete Pavement
- Asphalt Block Hex Pavers
- Bluestone Pavers or Treads

- Safety Surface
- Planted Beds
- Rain Garden

- Parks Security Lighting
- Parks Sports Lighting
- Drinking Fountain or Bottle Filler

- 1 Existing planting granite curbs at building entry to be removed, both sides
- 2 Existing Bluestone Risers at central ramp steps to be removed
- Existing Parapet Wall to be repaired and remain. Existing Stone Coping to remain
- 3 Existing tree pits to be enlarged
- 4 Existing Concrete Seat Wall to be removed



**Legend**

--- Project Limit

# Area of Focus

← Park Entrance

● Existing Tree

⊕ Proposed Tree

□ Existing Concrete

□ Existing Asphalt Pavement

■ Asphalt Pavement

■ Colored Concrete

■ Concrete Pavement

■ Asphalt Block Hex Pavers

■ Bluestone Pavers or Treads

■ Safety Surface

■ Planted Beds

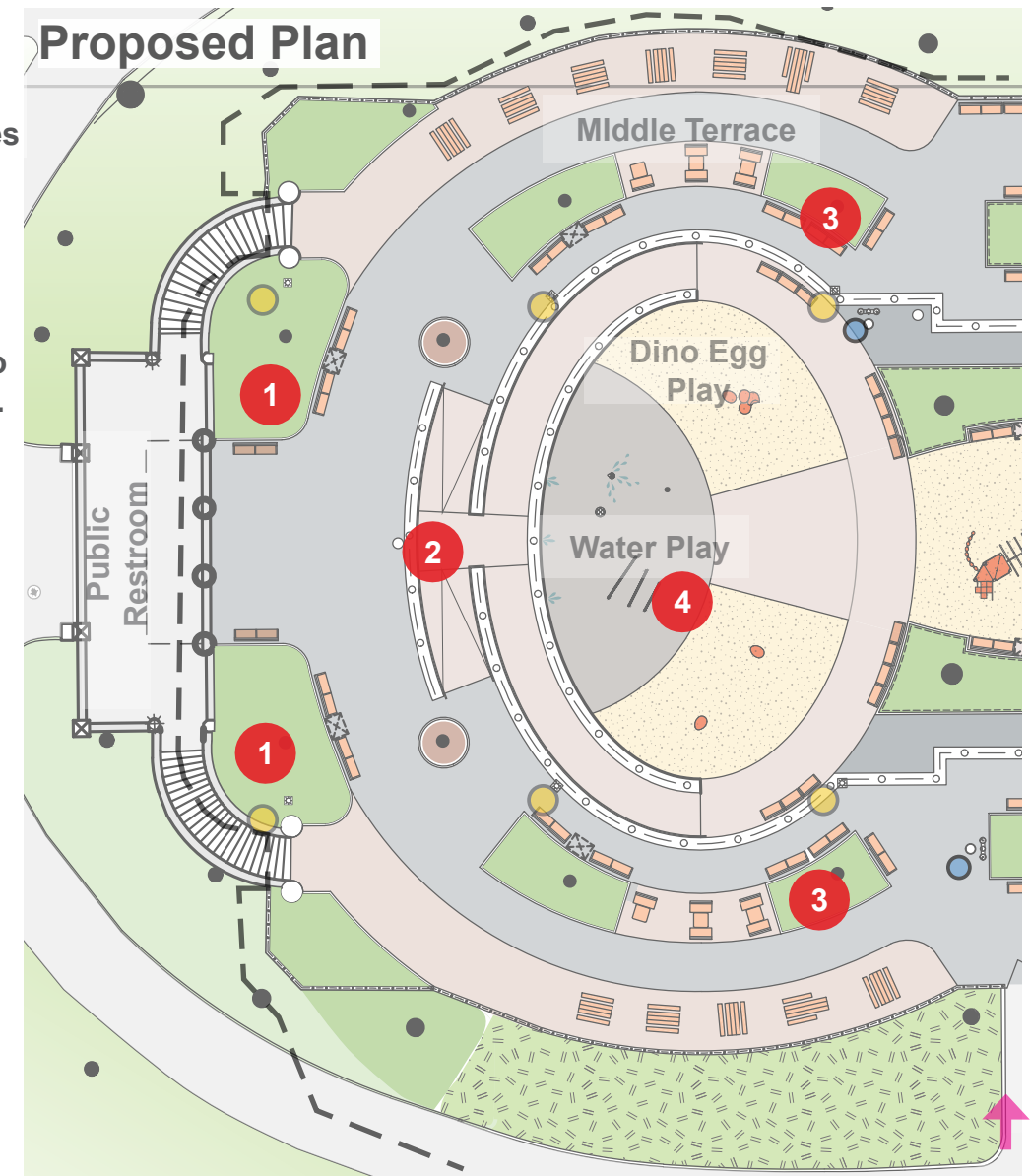
■ Rain Garden

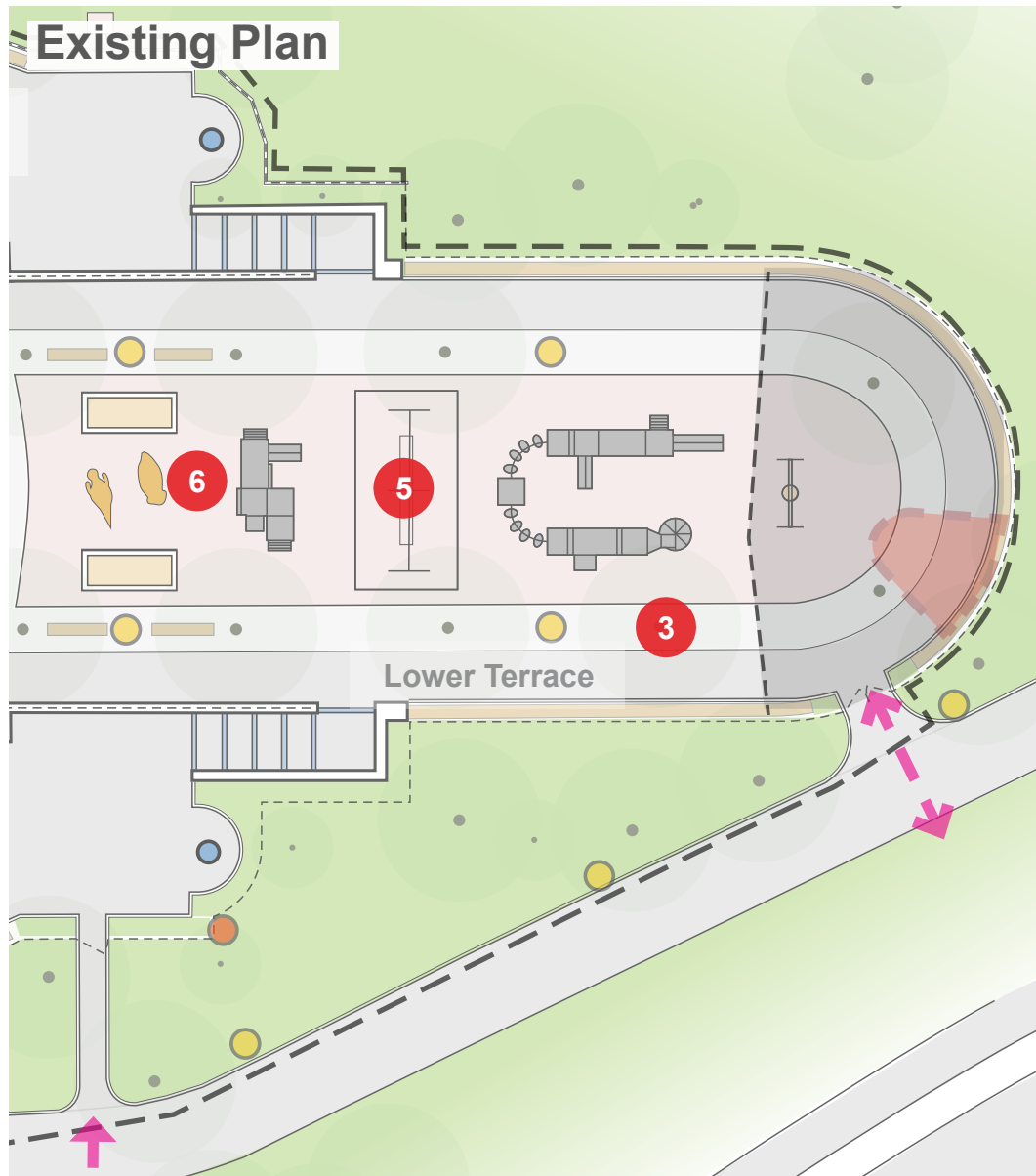
● Parks Security Lighting

● Parks Sports Lighting

● Drinking Fountain or Bottle Filler

- 1 Enlarged Planter with Granite Curb, both sides
- 2 New Central Concrete Ramps
- Existing Parapet Wall to be repaired and remain. Existing Stone Coping to remain
- 3 Larger Tree Planters, typ.
- 4 New Concrete Wall for Ramp





**Legend**

--- Project Limit	● Existing Tree	□ Existing Asphalt Pavement	□ Concrete Pavement	□ Safety Surface	● Parks Security Lighting
# Area of Focus	● Proposed Tree	□ Asphalt Pavement	□ Asphalt Block Hex Pavers	□ Planted Beds	● Parks Sports Lighting
← Park Entrance	□ Existing Concrete	□ Colored Concrete	□ Bluestone Pavers or Treads	□ Rain Garden	● Drinking Fountain or Bottle Filler





1939 World's Fair Bench with Kebony Wood Slats



Concrete Game Table with Steel Post and 1939 World's Fair Benches



Wooden Picnic Tables, Accessible and Regular



Finish of Picnic Tables and Benches, TYP. Wood Slats: Kebonized Radiata Pine



Type B Pole With Riverside Luminaire



Bottle Filler  
Color: Black



Drinking Fountain- Type "E" HI-LO  
Color: Black

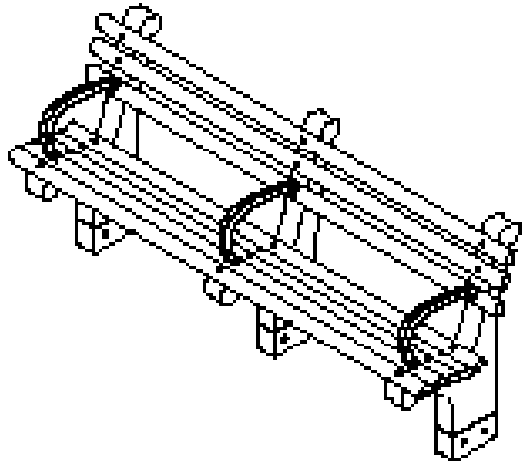


Trash Receptacle, Big Belly





Concrete Type 'B' Bench with Armrests



Concrete Type 'B' Bench with Armrests - Axonometric



Concrete Type 'B' Bench w/o Armrests at Game Tables



Concrete Game Table with Steel Post



Finish of Picnic Tables and Benches, Typ.  
Wood Slats:  
Kebonized Radiata Pine



Wooden Picnic Tables, Accessible and Regular



Type B Pole With Riverside Luminaire



Bottle Filler  
Color: Black



Drinking Fountain- Type "E" HI-LO  
Color: Black



Trash Receptacle, Big Belly





**Asphalt Block Hex Pavers to match Existing at Riverside Drive**



**Asphalt Pavement**



**Colored Concrete Pavement  
Color: French Gray**



**Natural Concrete**



**Steel Fence, 4ft high at Perimeter, 3ft high at Swings**



**Wicket Steel Fence with Granite Block Edging,  
12in high with 2in reveal**

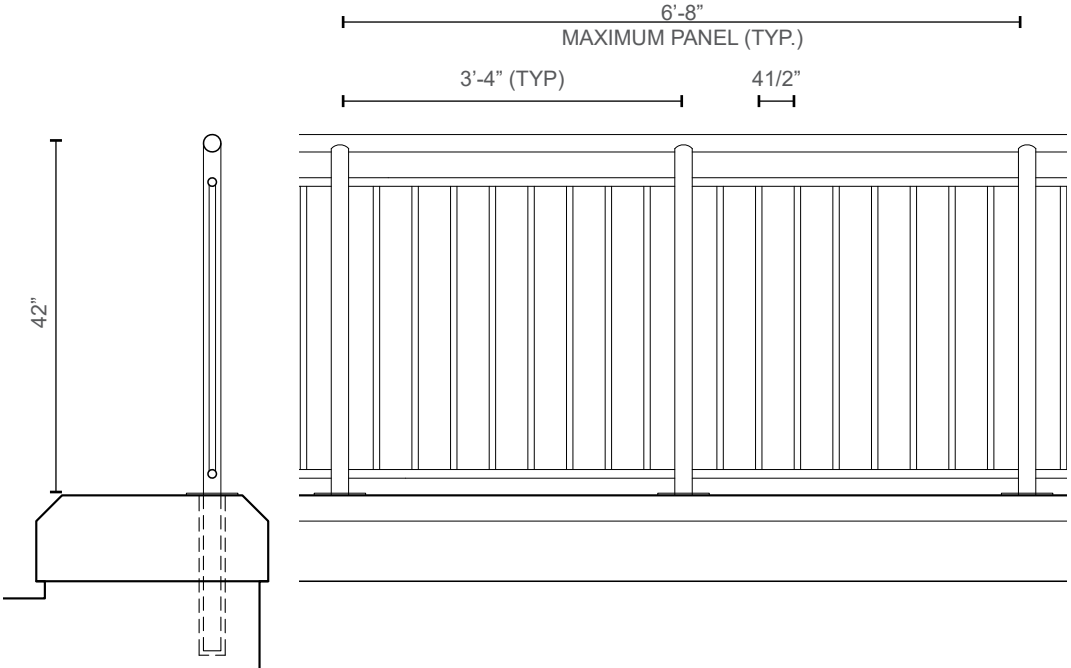




**Raise Existing 12” ht Pipe Railing on Existing 12” ht Parapet wall to compliant height**



**Existing 42” ht Fence on Wall at Water Play Area**



**New 42” Railing on Existing 12” ht Parapet wall, Single Posts**



**Replace Granite Curb, Bluestone Paver Landings and Granite Stair Treads at Riverside Dr Entry**



**Replace-in-Kind Wall Coping as required**



**Sand Texture in a Medium Density Apperance, Painted White, For Inner Face of New and Parapet Wall**