



**Parks**

# **VERDI SQUARE ACCESSIBLE PATH**

LPC Presentation

Designer: Cameron Engineering an IMEG Company

Date: May 20, 2025

Total Budget: 873K, City Council

# Goals

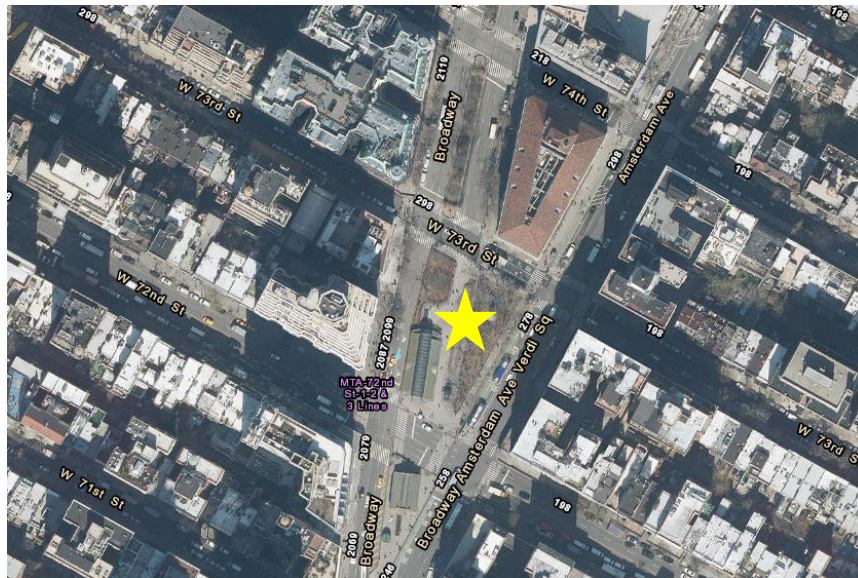
- Install a Diamond Grid path to provide an accessible route within the square.
- Provide water service and cross-connection controls.
- Install an RPZ (Reduced Pressure Zone) backflow device and a water meter in a vandal proof enclosure.
- Install two quick couplers at Verdi Square.







New York City NTS



Neighborhood of Upper West Side NTS



Site: Verdi Square NTS



## MG-123M Installation of Water Service Verdi Square | Project Location



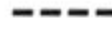


#### LEGEND

EXISTING WATER MAIN



CONTRACT LIMIT LINE



GRAPHIC SCALE

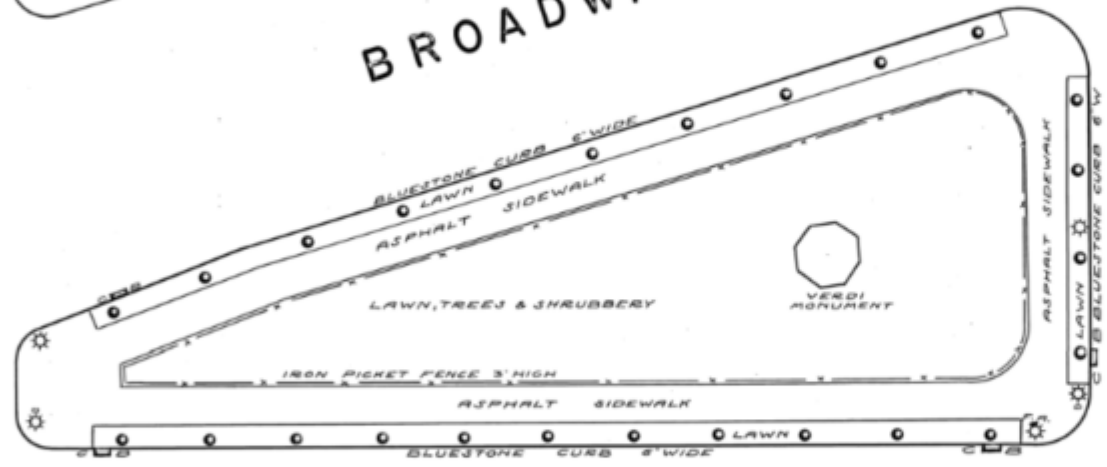




W. 72ND ST.

BROADWAY

W. 73RD ST.



AMSTERDAM AVE.

August 8, 1935

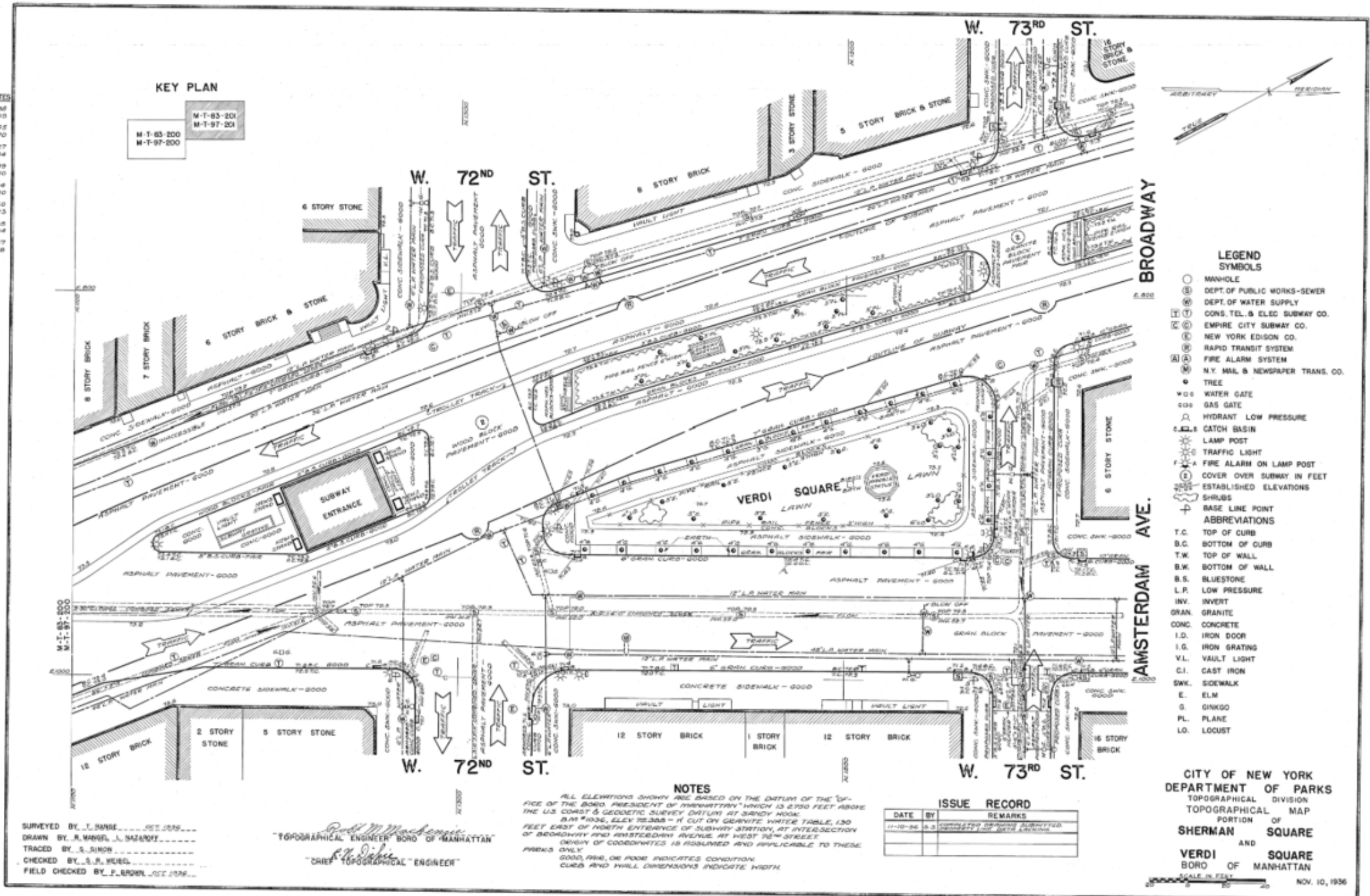


**MG-123M Installation of Water Service**  
**Verdi Square | Historical Mapping**

TABLE OF COORDINATES

TRAVERSE POINT	COORDINATES
1	N 1263.38 E 619.40
2	N 1348.45 E 795.70
3	N 1548.27 E 794.84
4	N 1567.39 E 1000.00
5	N 1568.14 E 1000.00
6	N 1572.69 E 890.23
7	N 1572.85 E 842.84
8	N 1550.87 E 821.68

KEY PLAN



- LEGEND SYMBOLS**
- MANHOLE
  - ⊗ DEPT. OF PUBLIC WORKS-SEWER
  - ⊗ DEPT. OF WATER SUPPLY
  - ⊗ CONS. TEL. & ELEC. SUBWAY CO.
  - ⊗ EMPIRE CITY SUBWAY CO.
  - ⊗ NEW YORK EDISON CO.
  - ⊗ RAPID TRANSIT SYSTEM
  - ⊗ FIRE ALARM SYSTEM
  - ⊗ N.Y. MAIL & NEWSPAPER TRANS. CO.
  - TREE
  - ⊗ WATER GATE
  - ⊗ GAS GATE
  - ⊗ HYDRANT LOW PRESSURE
  - ⊗ CATCH BASIN
  - ⊗ LAMP POST
  - ⊗ TRAFFIC LIGHT
  - ⊗ FIRE ALARM ON LAMP POST
  - ⊗ COVER OVER SUBWAY IN FEET
  - ⊗ ESTABLISHED ELEVATIONS
  - ⊗ SHRUBS
  - ⊗ BASE LINE POINT
- ABBREVIATIONS**
- T.C. TOP OF CURB
  - B.C. BOTTOM OF CURB
  - T.W. TOP OF WALL
  - B.W. BOTTOM OF WALL
  - B.S. BLUESTONE
  - L.P. LOW PRESSURE
  - INV. INVERT
  - GRAN. GRANITE
  - CONC. CONCRETE
  - I.D. IRON DOOR
  - I.G. IRON GRATING
  - V.L. VAULT LIGHT
  - C.I. CAST IRON
  - SWK. SIDEWALK
  - E. ELM
  - S. GINKGO
  - PL. PLANE
  - LO. LOCUST

**NOTES**

ALL ELEVATIONS SHOWN ARE BASED ON THE DATUM OF THE OFFICE OF THE BOARD OF ALDERMEN OF MANHATTAN WHICH IS 2.000 FEET ABOVE THE U.S. COAST & GEODETIC SURVEY DATUM OF 1929. B.M. #1036, ELEV. 72.305 - IS CUT ON GRANITE WATER TABLE, 130 FEET EAST OF NORTH ENTRANCE OF SUBWAY STATION, AT INTERSECTION OF BROADWAY AND AMSTERDAM AVENUE, AT WEST 72<sup>ND</sup> STREET. ORIGIN OF COORDINATES IS ASSUMED AND APPLICABLE TO THESE PLOTS ONLY.

GOOD, FAIR, OR POOR INDICATES CONDITION. CURB AND WALL DIMENSIONS INDICATE WIDTH.

**ISSUE RECORD**

DATE	BY	REMARKS
11-10-36	S.S.	SUBMITTED TO BOARD OF ALDERMEN

CITY OF NEW YORK  
DEPARTMENT OF PARKS  
TOPOGRAPHICAL DIVISION  
TOPOGRAPHICAL MAP  
PORTION OF  
**SHERMAN SQUARE**  
AND  
**VERDI SQUARE**  
BORO OF MANHATTAN

SCALE IN FEET  
0 10 20  
NOV. 10, 1936

SURVEYED BY J. HANSE  
DRAWN BY J. HANSE  
TRACED BY S. J. HANSE  
CHECKED BY S. J. HANSE  
FIELD CHECKED BY F. BROWN

*Robert M. Mackenzie*  
TOPOGRAPHICAL ENGINEER BORO OF MANHATTAN  
*R. J. HANSE*  
"CHIEF TOPOGRAPHICAL ENGINEER"

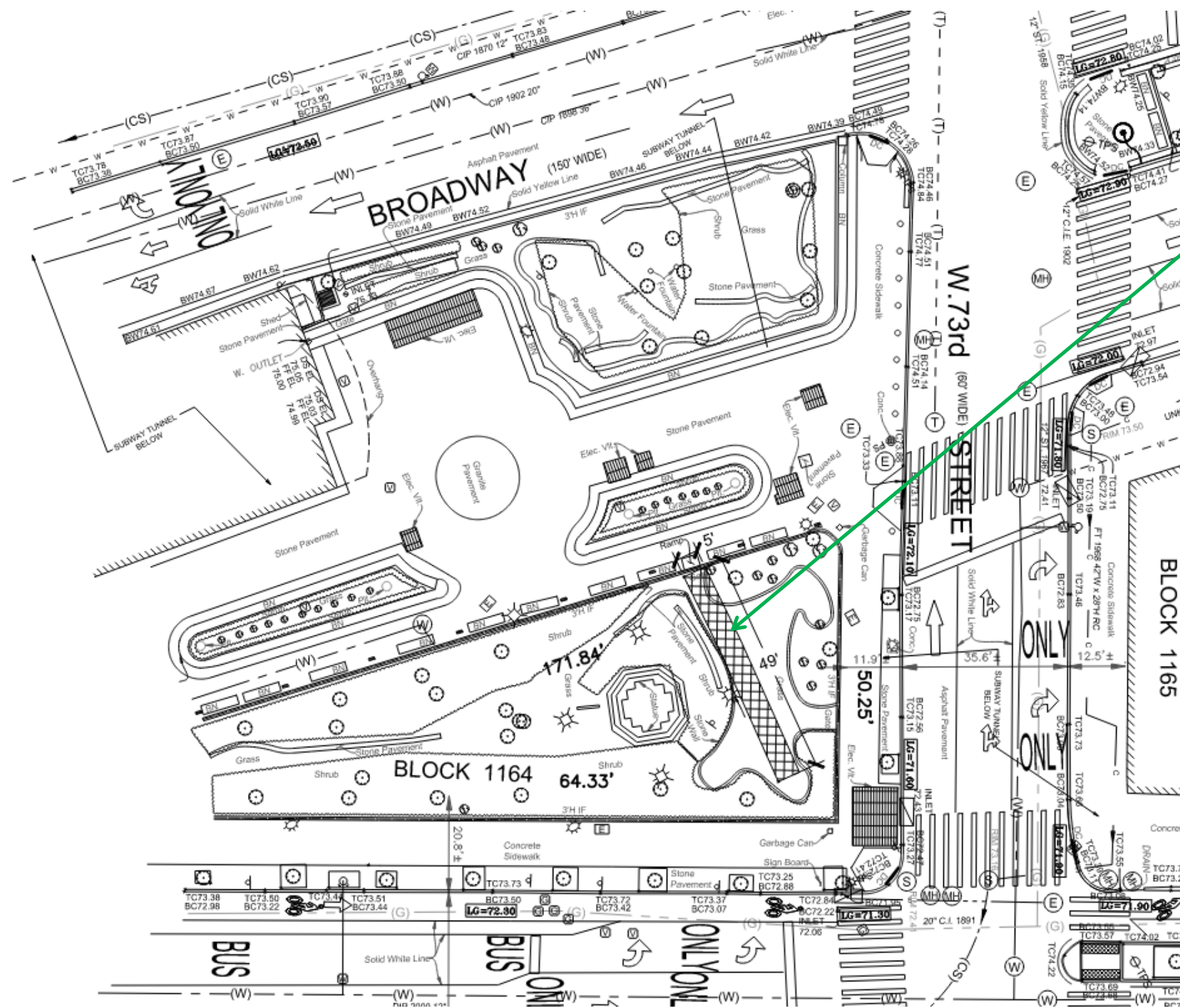
M - T - 83 - 201  
M - T - 97 - 201

November 10, 1936



**MG-123M Installation of Water Service**  
**Verdi Square | Historical Mapping**





Existing temporary access  
5' x 49' path





1 – Verdi Square – 1940s



2 – Verdi Square – 1980s



3 – Verdi Square – 2024



NYC Parks

# **MG-123M Installation of Water Service** **Verdi Square | Site Evolution**

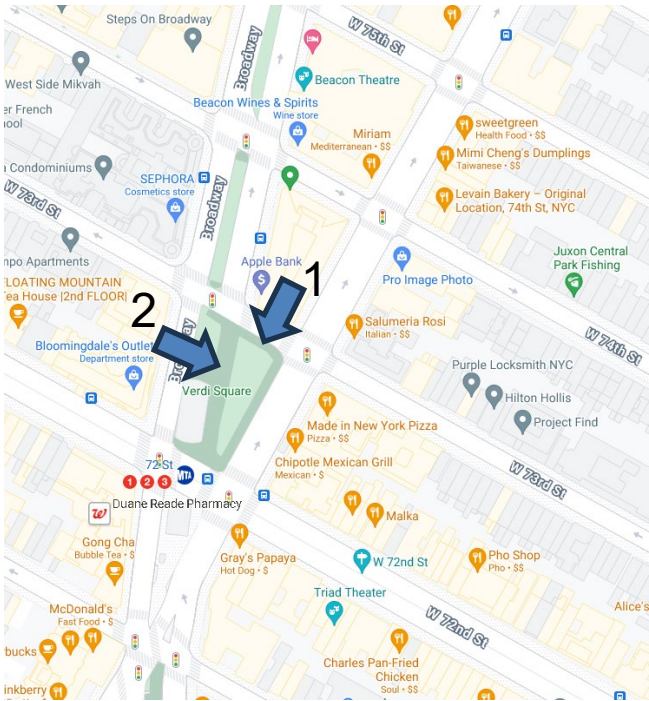




1 – W 73<sup>rd</sup> Street looking South



2 – Verdi Path looking East



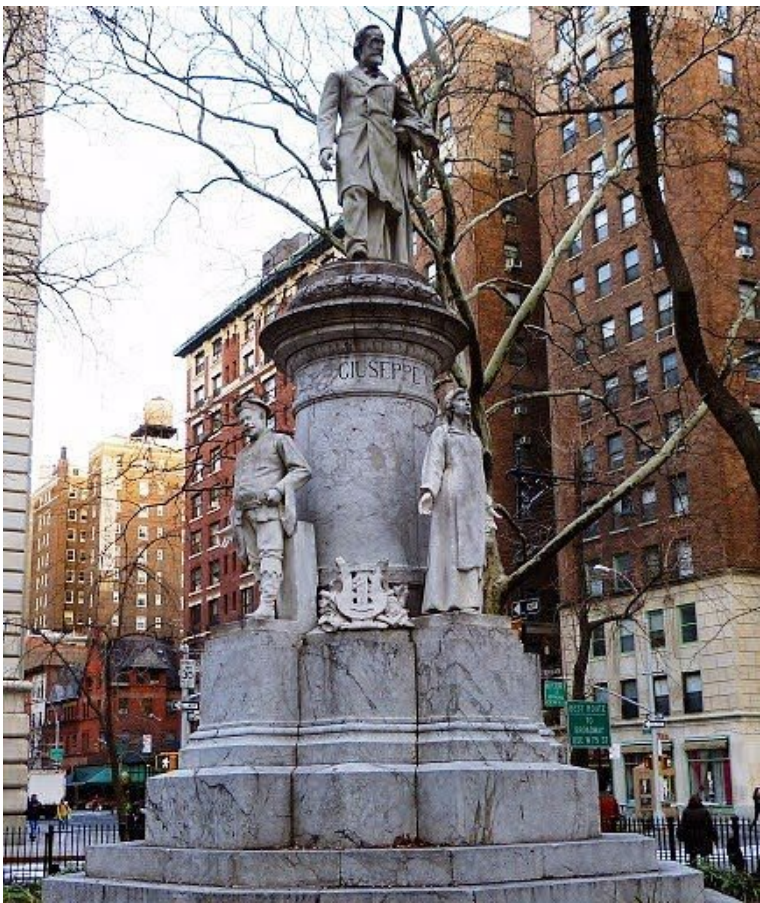
NYC Parks

# MG-123M Installation of Water Service Verdi Square | Existing Conditions

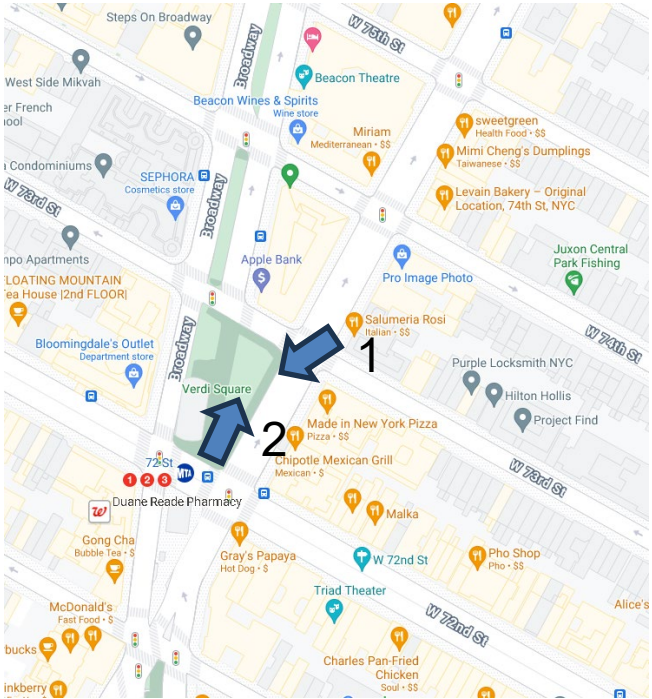




1 – Amsterdam Avenue looking South



2 – Giuseppe Verdi Monument



NYC Parks

# **MG-123M Installation of Water Service** **Verdi Square | Existing Conditions**



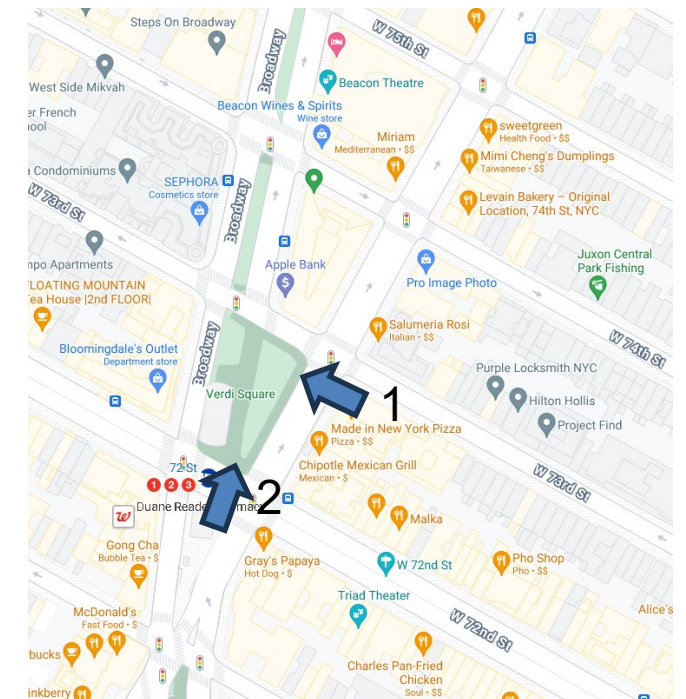




1 – Amsterdam Avenue looking West



2 – W 72nd Street looking North



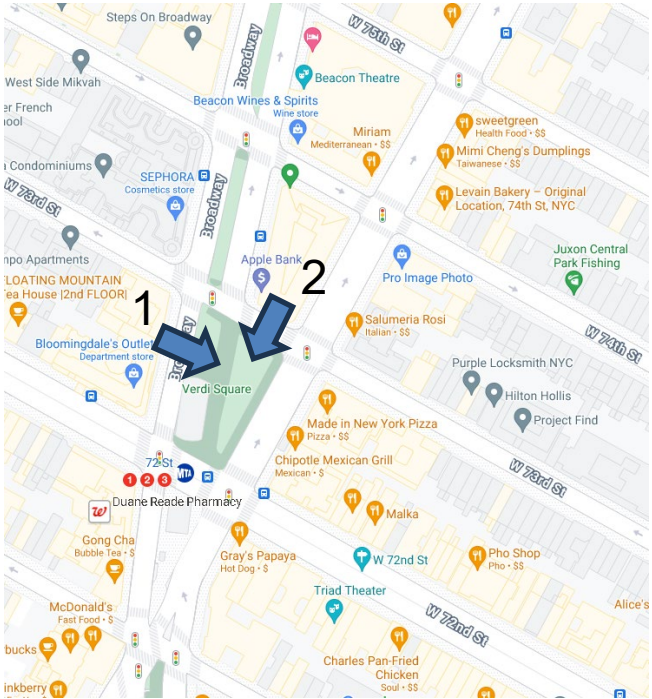




1 – Verdi Path looking East



2 – Verdi Path looking South



NYC Parks

# **MG-123M Installation of Water Service** **Verdi Square | Existing Conditions**







1 – W 73<sup>rd</sup> Street looking Southeast



2 – Verdi Path looking South



NYC Parks

# MG-123M Installation of Water Service Verdi Square | Existing Conditions



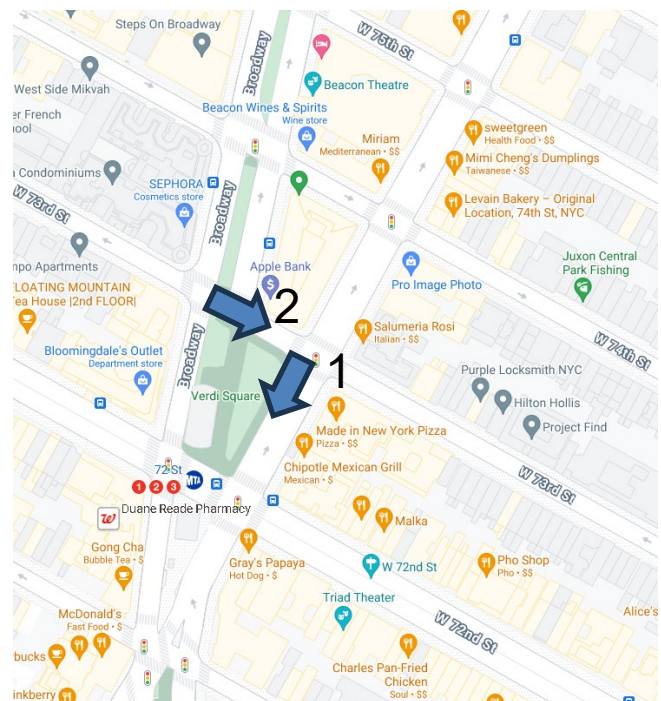




1 – Amsterdam Avenue looking South



2 – W 73rd Street looking East



# MG-123M Installation of Water Service Verdi Square | Existing Conditions

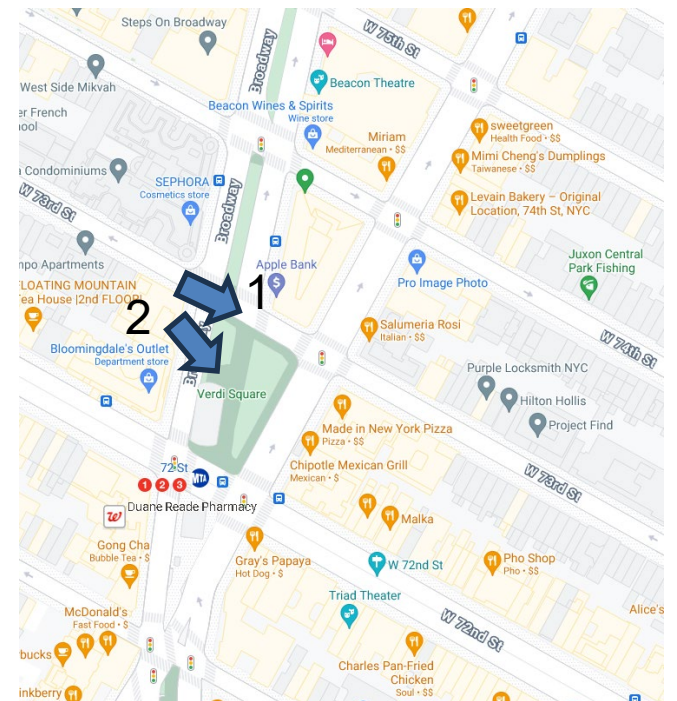




1 – W 73<sup>rd</sup> Street looking East



2 – W 73<sup>rd</sup> Street looking Southeast



NYC Parks

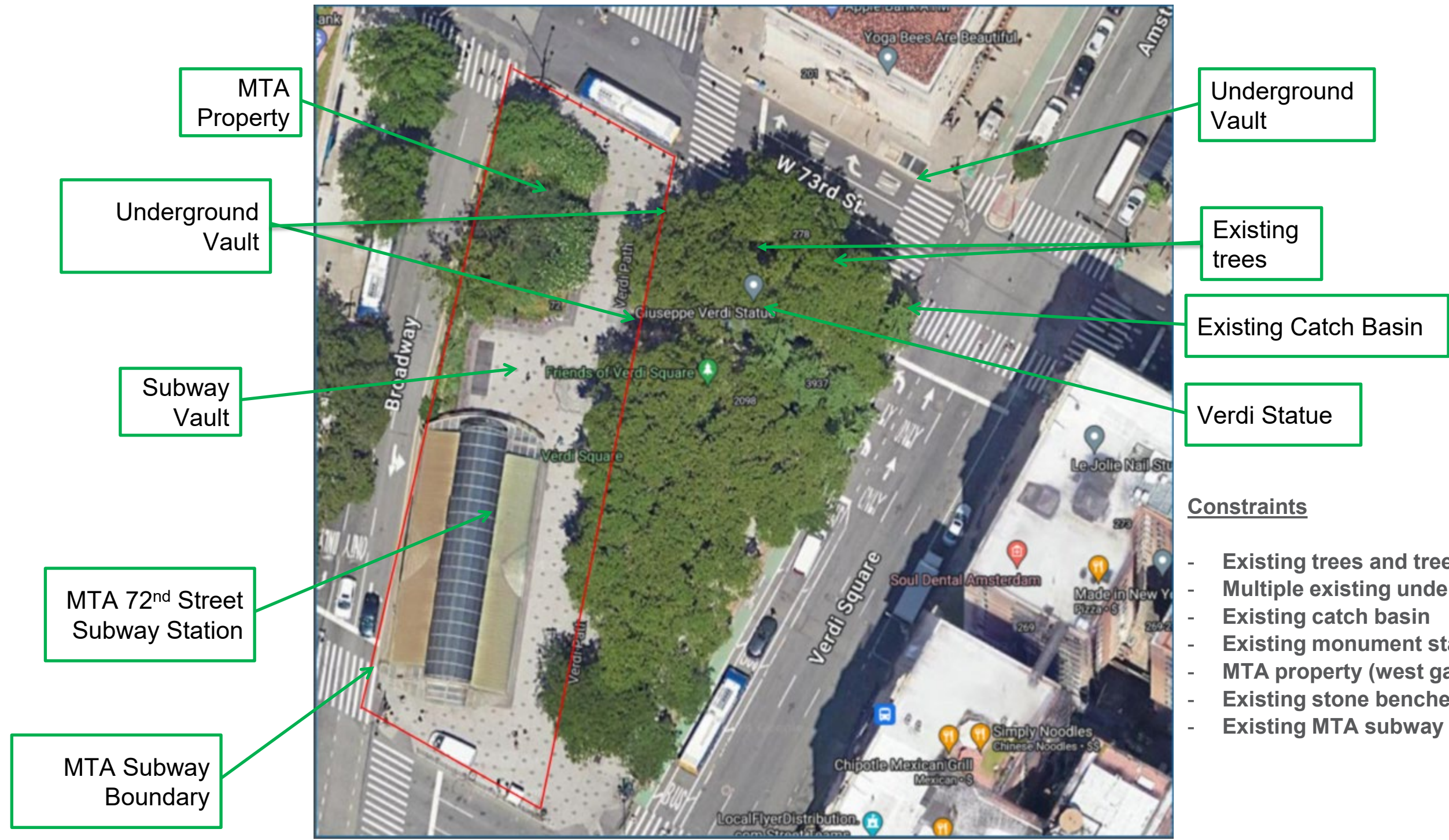
## MG-123M Installation of Water Service Verdi Square | Existing Conditions







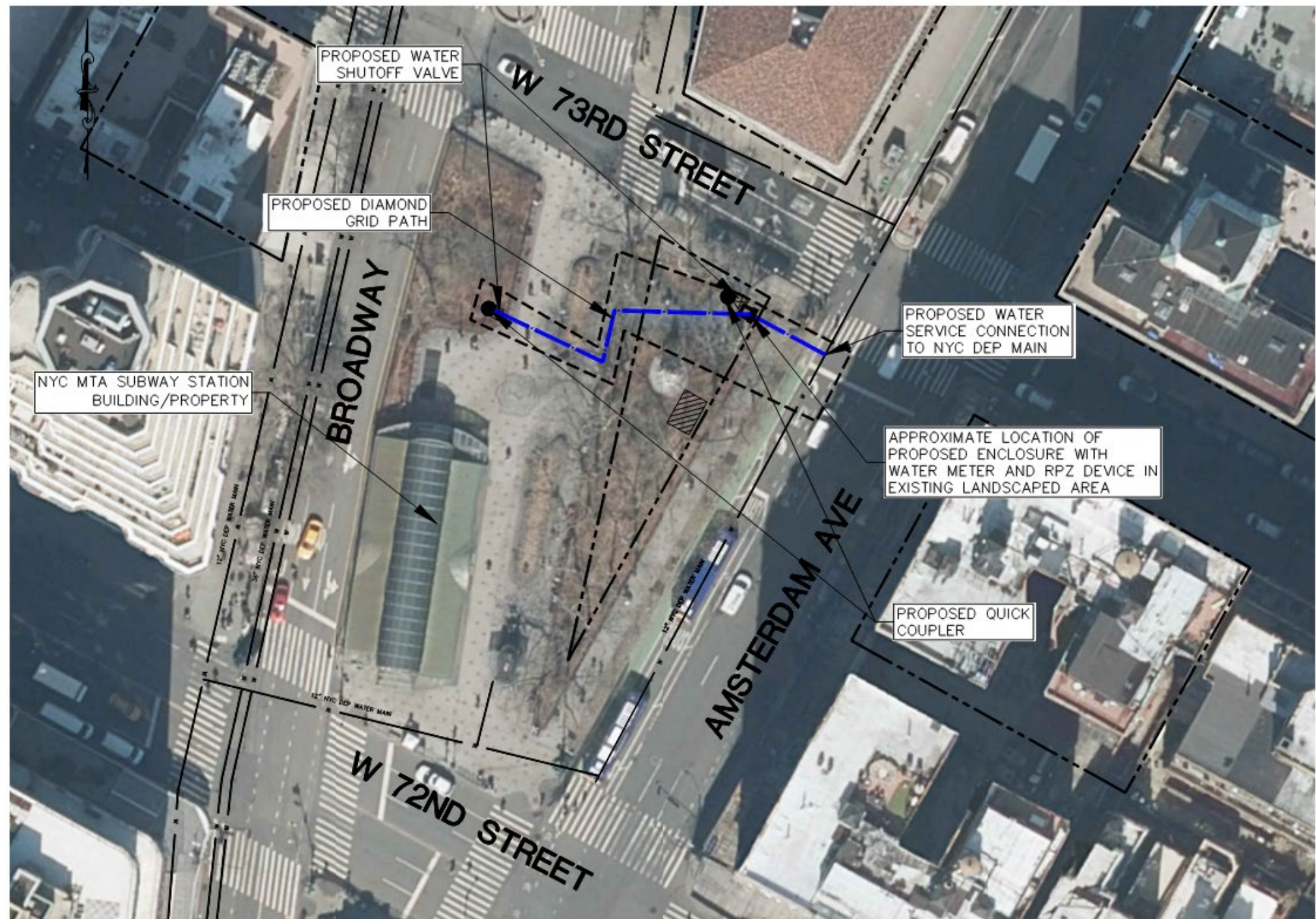
## MG-123M Installation of Water Service Verdi Square | RPZ and Enclosure Location



### Constraints

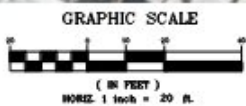
- Existing trees and tree roots
- Multiple existing underground vaults
- Existing catch basin
- Existing monument statue
- MTA property (west garden area)
- Existing stone benches
- Existing MTA subway





# LEGEND

EXISTING WATER MAIN	
CONTRACT LIMIT LINE	
PROPOSED UNDERGROUND WATER SERVICE	
PROPOSED QUICK COUPLER	
PROPOSED WATER SHUTOFF VALVE	



## MG-123M Installation of Water Service Verdi Square | Schematic Design





## NTS





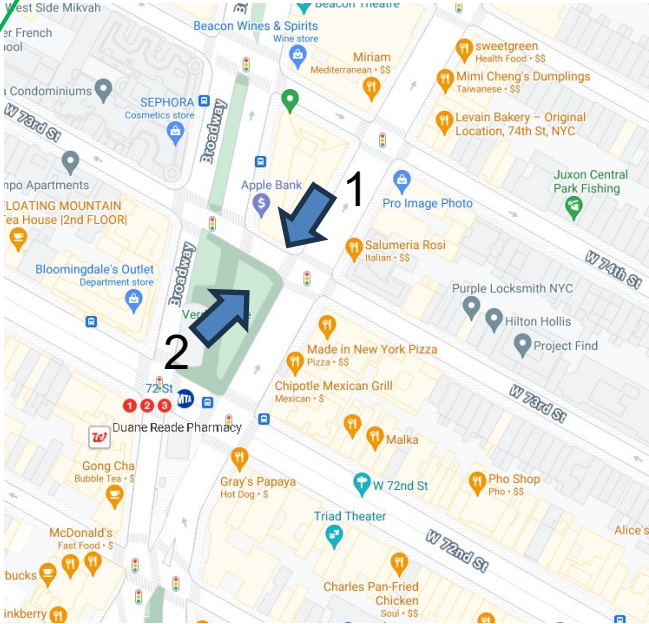




1 - Verdi Square looking South



2 - Verdi Square looking North



APPROXIMATE LOCATION OF  
PROPOSED RPZ ENCLOSURE  
(38" HIGH X 46" WIDE)



NYC Parks

**MG-123M Installation of Water Service**  
**Verdi Square | Proposed Conditions**





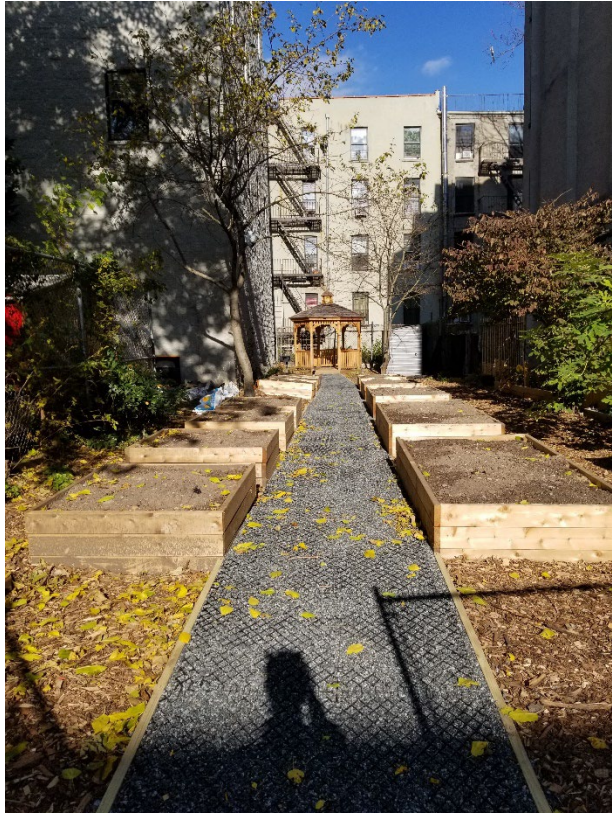
Garden of Resilience, Queens



NYC Community Path Project



NYC Community Path Project



Jackie Robinson Community Garden



**MG-123M Installation of Water Service**  
**Verdi Square | Diamond Gird Examples**





1 – Bryant Park



2 – Jackson Square



**MG-123M Installation of Water Service**  
**Verdi Square | Precedents**





1 – Madison Square Park



2 – Greeley Square Park





1 – Madison Square Park



2 – Greeley Square Park

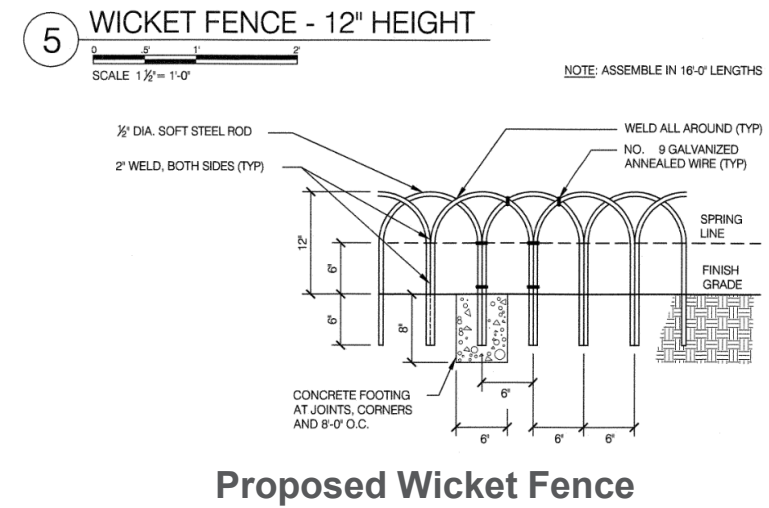




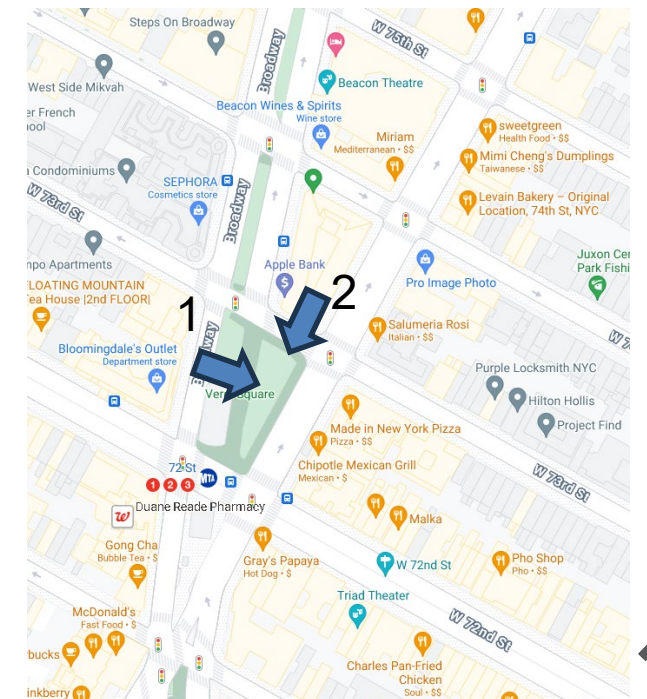
1 - Verdi Path looking West



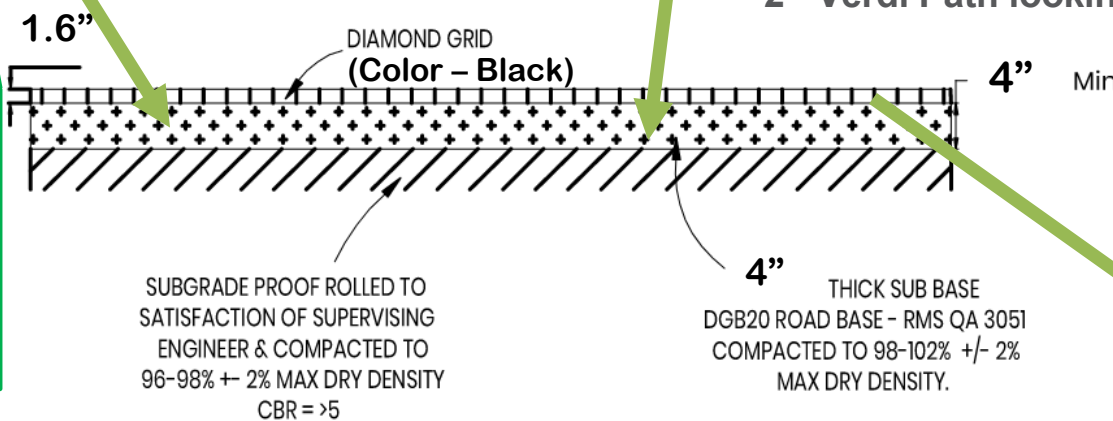
2 - Verdi Path looking South



APPROXIMATE LOCATION OF PROPOSED RPZ ENCLOSURE (38" HIGH X 46" WIDE)



CUT AND SINK EXISTING CURB AT ENTRANCES FLUSH WITH SIDEWALK



Proposed Diamond Grid filled w/ gravel - Path Profile - 5.5" depth



**MG-123M Installation of Water Service**  
**Verdi Square | Proposed Conditions**





**Parks**

## **APPENDIX**





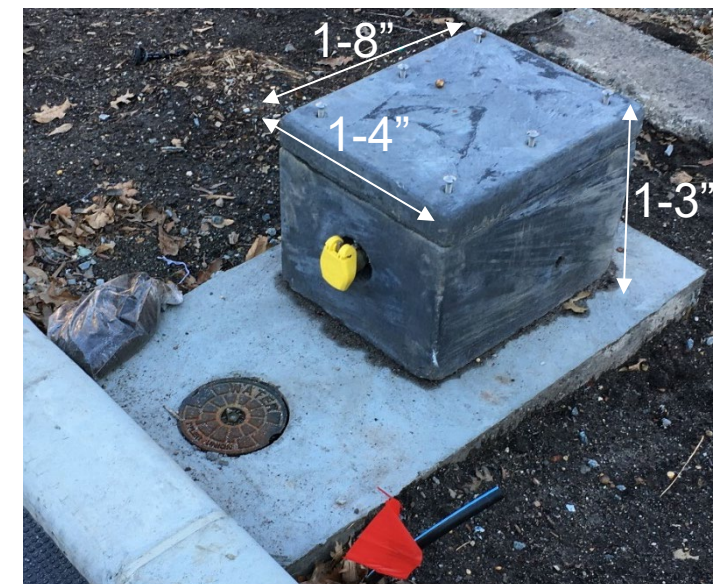
Aluminum Enclosure

#### Aluminum

- Safe-T-Cover Model no. 200SN-AL (46" x 19")
- Color – Black

#### Benefits:

- Vandal Proof: permanent anchor to concrete pad
- Vandal Proof: durable material
- Vandal Proof: add enhanced locking mechanism
- No underground vault:
  - shallow excavation
  - underground drain not needed
  - leak detection alarm inside vault not needed



Quick Coupler

RPZ Enclosure with RPZ and Water Meter – Aluminum RPZ Enclosure



## MG-123M Installation of Water Service

Verdi Square | RPZ Enclosure with RPZ and Water Meter / Quick Coupler













Otto Luyken- Cherry Laurel